

CITY OF ALBANY

SS-22-01, COX CREEK INTERCEPTOR IMPROVEMENTS: PHASE 2

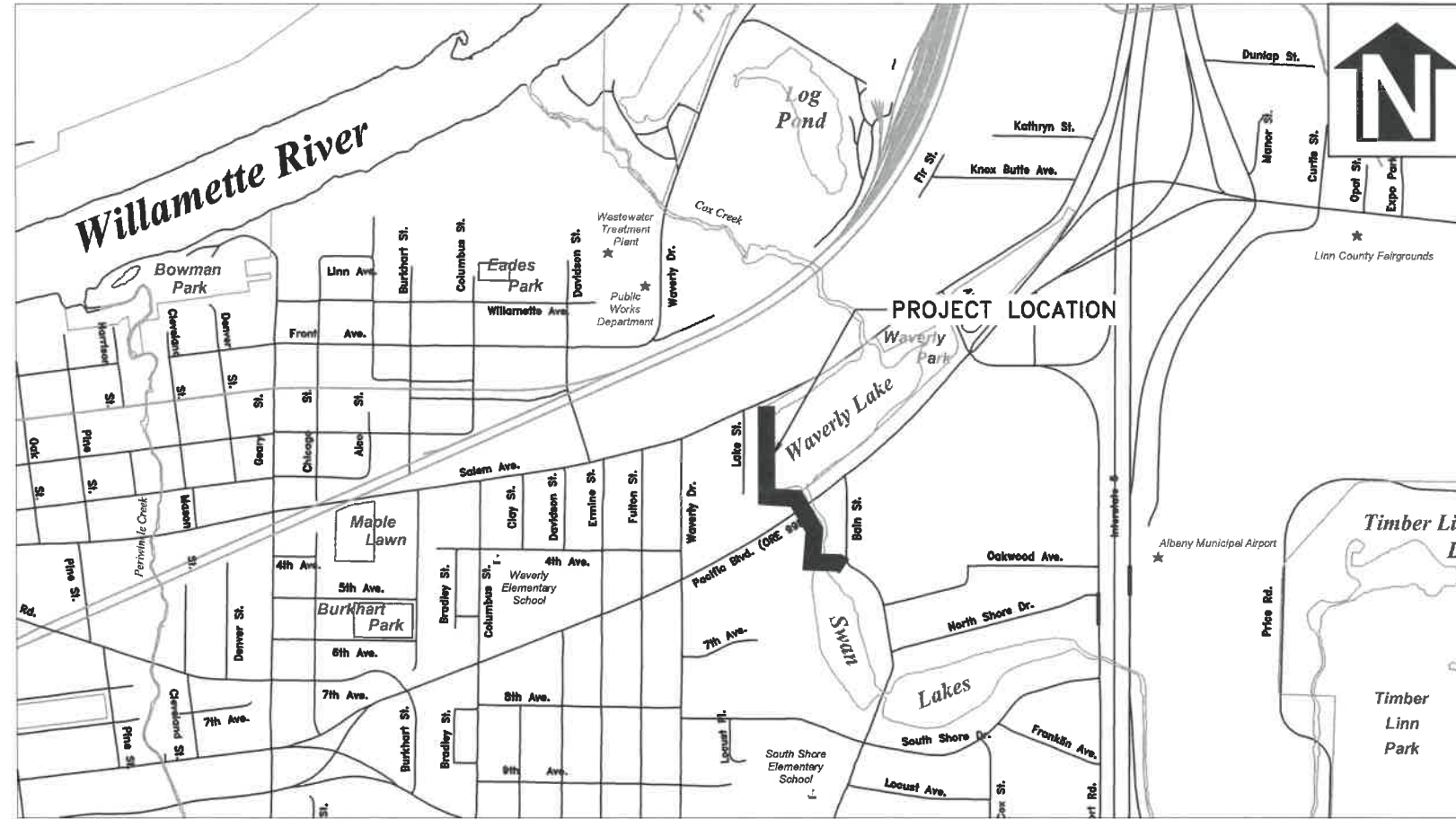
SHEET INDEX

SHEET NO. 1,	COVER & GENERAL NOTES
SHEETS NO. 2-6,	COX CREEK SEWER INTERCEPTOR CONSTRUCTION
SHEETS NO. 7,	BAIN STREET WATER LINE
SHEETS NO. 8-9,	SURFACE RESTORATION PLANS
SHEETS NO. 10-14,	EPSC PLAN

LEGEND

	EXISTING WATER SERVICE		NEW CURB INLET
	RECONNECT EXISTING METER		NEW CATCH BASIN
	EXISTING WATER VALVE		EXISTING STREET LIGHT
	NEW WATER VALVE		EXISTING TRAFFIC SIGN
	EXISTING WATER LINE		EXISTING HYDRANT
	EXISTING GAS LINE		NEW WATER LINE
	EXISTING STORM LINE		NEW SEWER LINE
	EXISTING SANITARY SEWER LINE		NEW SANITARY SEWER MAINLINE CLEANOUT
	EXISTING QL N DUCT		NEW SANITARY SEWER MANHOLE
	EXISTING COMMUNICATION LINE		NEW SEWER LATERAL PROPERTY LINE CLEANOUT
	EXISTING UNDERGROUND POWER LINES		NEW SEWER LATERAL PRIVATE CLEANOUT
	EXISTING OVERHEAD POWER LINES		
	EXISTING POWER POLE		
	EXISTING SANITARY SEWER MANHOLE		

SCALE VARIES ON
INDIVIDUAL PLAN SHEETS



Vicinity Map
Not to Scale

GENERAL NOTES

- ALL CONSTRUCTION SHALL CONFORM TO THE CITY OF ALBANY STANDARD CONSTRUCTION SPECIFICATIONS AND ASSOCIATED STANDARD DRAWINGS. THE CURRENT VERSION OF THE CITY OF ALBANY STANDARD CONSTRUCTION SPECIFICATIONS CAN BE FOUND ON THE CITY'S WEBSITE AT WWW.CITYOFALBANY.NET.
- UTILITIES SHOWN ARE FOR REFERENCE ONLY. FOR A FIELD LOCATE, CALL THE UTILITIES NOTIFICATIONS CENTER AT 1-800-332-2344.
- OPERATING ACCESS FOR CITY MAINTENANCE PERSONNEL TO EXISTING AND NEW WATER VALVES AND MANHOLES SHALL BE CONTINUOUSLY MAINTAINED BY THE CONTRACTOR DURING ALL CONSTRUCTION ACTIVITIES.
- CONTRACTOR SHALL VERIFY ALL EXISTING PIPE ELEVATIONS, PIPE DIAMETERS, AND PIPE MATERIALS AT CONNECTION AND ABANDONMENT LOCATIONS PRIOR TO CONSTRUCTION. ANY DISCREPANCIES SHALL BE REPORTED TO ENGINEER PRIOR TO BEGINNING WORK.
- ATTENTION: OREGON LAW REQUIRES YOU TO FOLLOW RULES ADOPTED BY THE OREGON UTILITY NOTIFICATION CENTER. THOSE RULES ARE SET FORTH IN OAR 952-001-0010 THROUGH OAR 952-001-0090. YOU MAY OBTAIN COPIES OF THE RULES BY CALLING THE CENTER. (NOTE: THE TELEPHONE NUMBER FOR THE OREGON UTILITY NOTIFICATION CENTER IS (503) 232-1987).
- CONTRACTOR SHALL BE RESPONSIBLE FOR PROPER INSTALLATION AND MAINTENANCE OF ALL EROSION PREVENTION SEDIMENT CONTROL (EPSC) MEASURES IN ACCORDANCE WITH LOCAL, STATE, AND FEDERAL REGULATIONS UNTIL ALL CONSTRUCTION IS COMPLETED AND APPROVED BY THE CITY OF ALBANY, AND VEGETATION/LANDSCAPING IS ESTABLISHED. FOR GUIDANCE, REFER TO THE CITY OF ALBANY EPSC MANUAL WHICH CAN BE FOUND AT www.cityofalbany.net.

DESIGNED: L. SCHUMACHER
DRAWN: L. SCHUMACHER
CHECKED: C. CERKLEWSKI
DATE: 12/22/2021

REVISIONS
NO: BY: DATE:

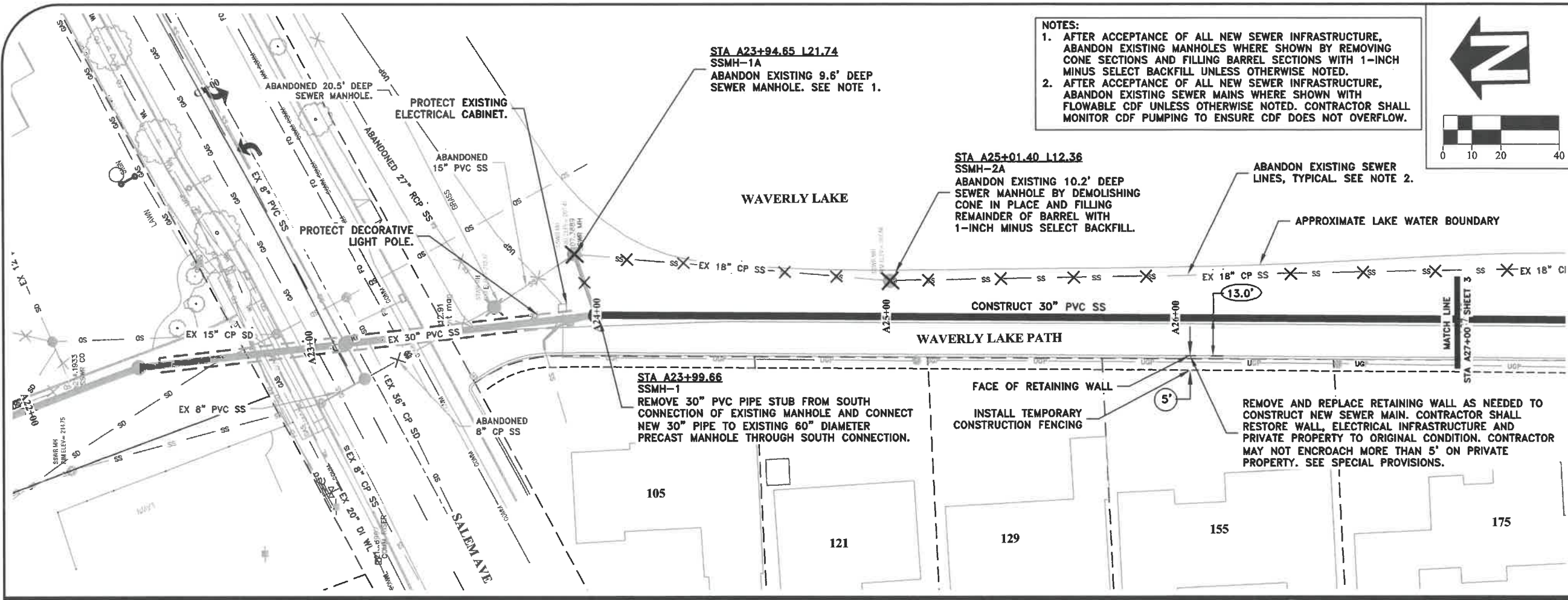
PUBLIC WORKS DEPARTMENT
ENGINEERING SERVICES



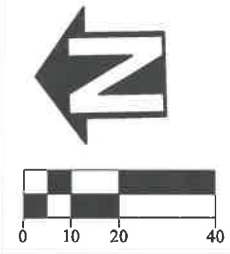
EXPIRES: 06/30/2022

SHEET NO. 1 OF 14
PROJECT NO: SS-22-01
FILE: FILENAME.DWG

SS-22-01, COX CREEK INTERCEPTOR IMPROVEMENTS: PHASE 2



NOTES:
 1. AFTER ACCEPTANCE OF ALL NEW SEWER INFRASTRUCTURE, ABANDON EXISTING MANHOLES WHERE SHOWN BY REMOVING CONE SECTIONS AND FILLING BARREL SECTIONS WITH 1-INCH MINUS SELECT BACKFILL UNLESS OTHERWISE NOTED.
 2. AFTER ACCEPTANCE OF ALL NEW SEWER INFRASTRUCTURE, ABANDON EXISTING SEWER MAINS WHERE SHOWN WITH FLOWABLE CDF UNLESS OTHERWISE NOTED. CONTRACTOR SHALL MONITOR CDF PUMPING TO ENSURE CDF DOES NOT OVERFLOW.

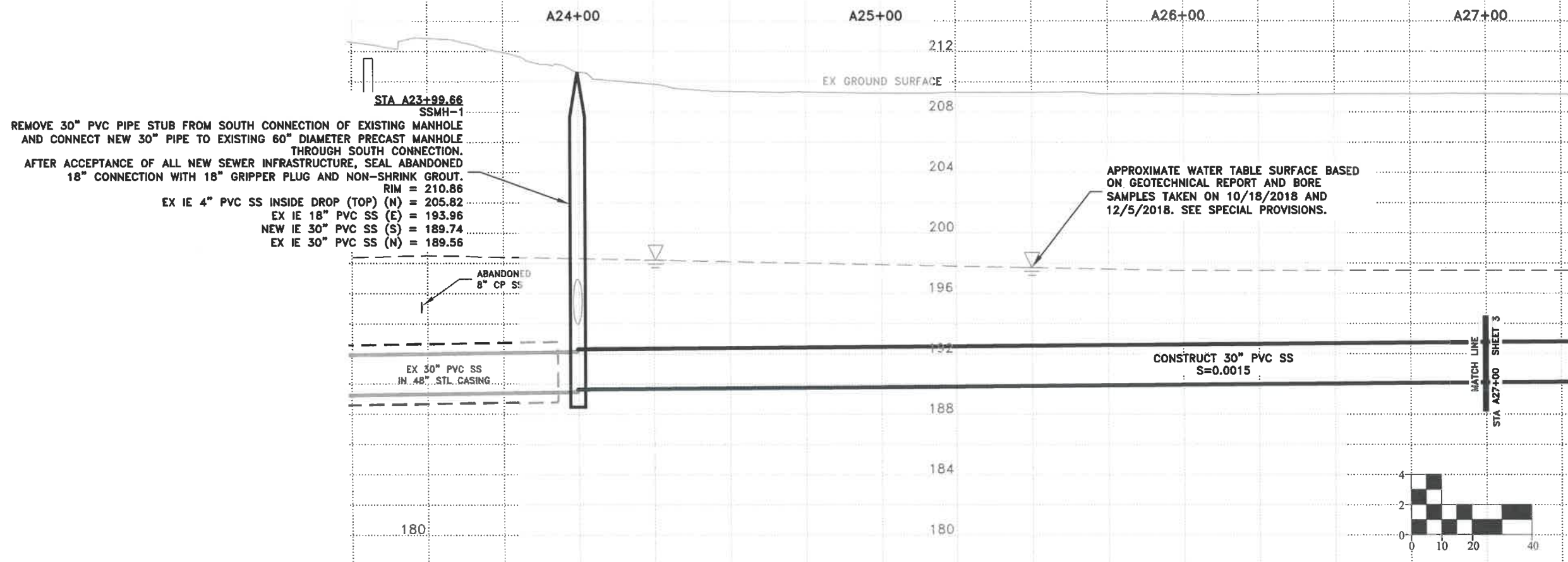


DESIGNED: L. SCHUMACHER	REVISIONS
DRAWN: L. SCHUMACHER	NO: -
CHECKED: C. CERKLEWSKI	BY: -
DATE: 12/22/2021	DATE: -

**PUBLIC WORKS DEPARTMENT
ENGINEERING SERVICES**

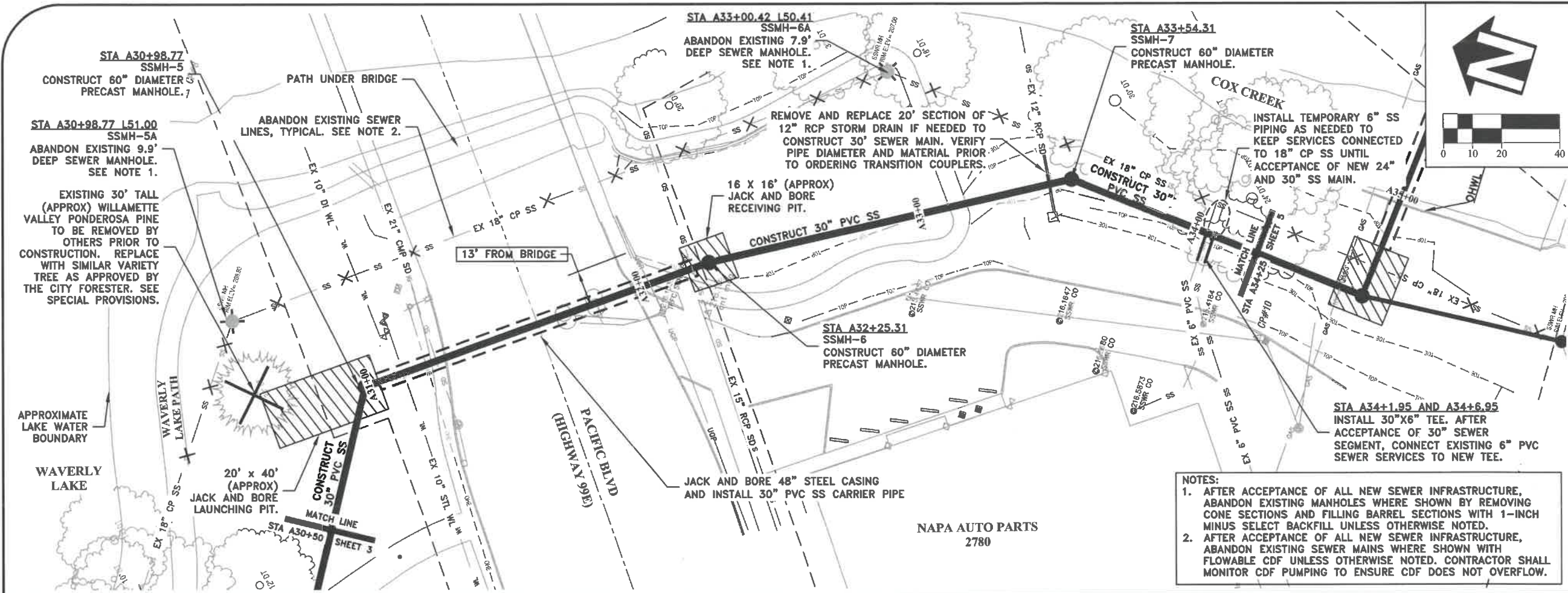
**SS-22-01, COX CREEK INTERCEPTOR IMPROVEMENTS: PHASE 2
COX CREEK SEWER INTERCEPTOR - NORTH WAVERLY LAKE**

NEW COX CREEK SEWER INTERCEPTOR PROFILE



EXPIRES: 06/30/2022

SHEET NO. 2 OF 14
 PROJECT NO: SS-22-01
 FILE: BASE.DWG



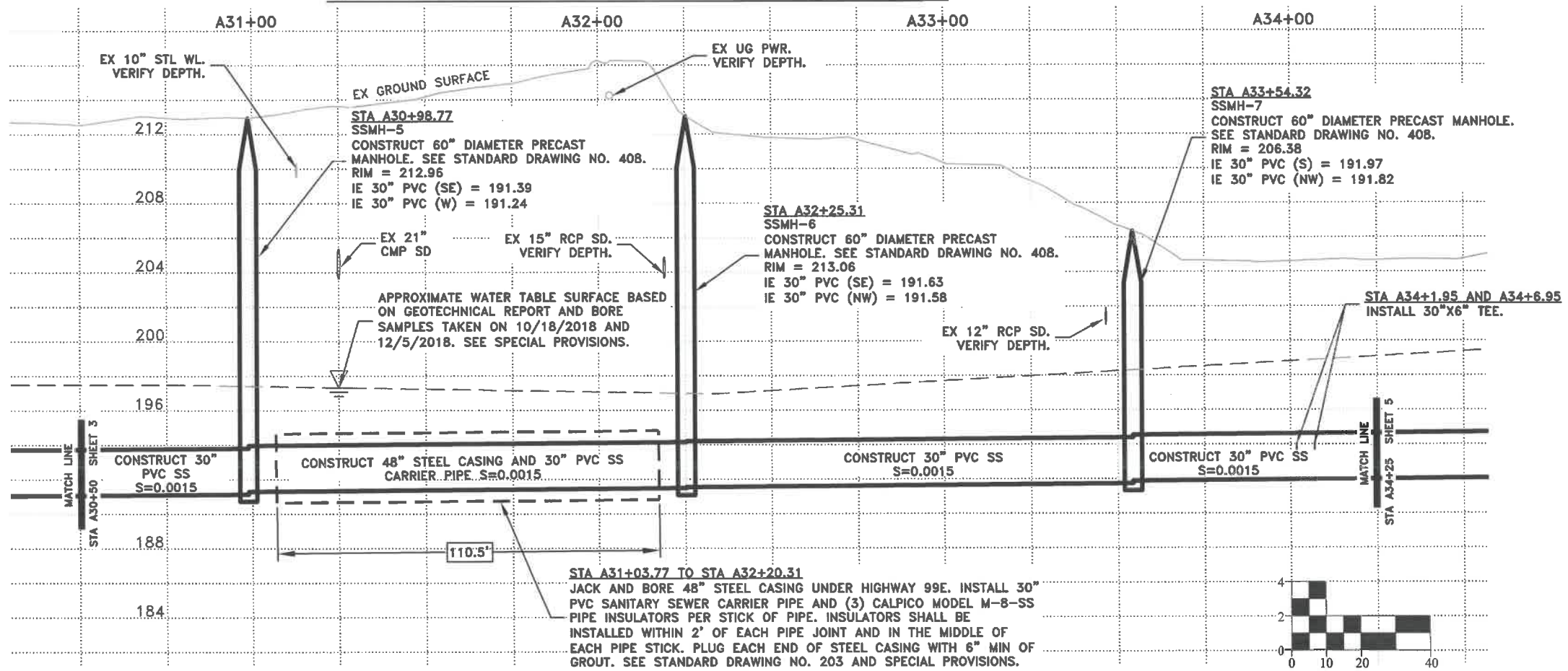
DESIGNED: L. SCHUMACHER	REVISIONS:	NO.:	BY:
DRAWN: L. SCHUMACHER			
CHECKED: C. CERKLEWSKI			
DATE: 12/22/2021			

PUBLIC WORKS DEPARTMENT
 ENGINEERING SERVICES



SS-22-01, COX CREEK INTERCEPTOR IMPROVEMENTS: PHASE 2
 COX CREEK SEWER INTERCEPTOR - PACIFIC BLVD (HWY 99E)

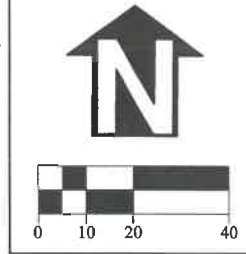
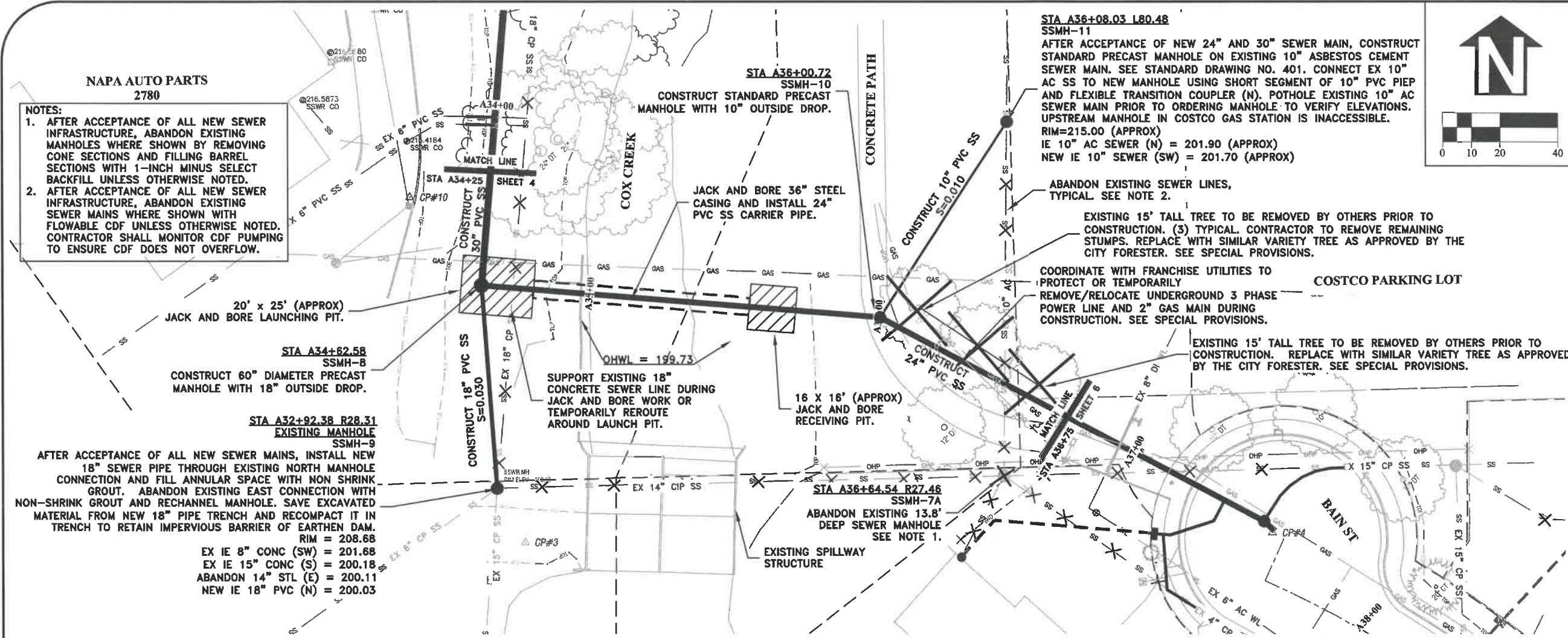
NEW COX CREEK SEWER INTERCEPTOR PROFILE



EXPIRES: 06/30/2022
 SHEET NO. 4 OF 14
 PROJECT NO: SS-22-01
 FILE: BASE.DWG

NAPA AUTO PARTS
2780

- NOTES:
- AFTER ACCEPTANCE OF ALL NEW SEWER INFRASTRUCTURE, ABANDON EXISTING MANHOLES WHERE SHOWN BY REMOVING CONE SECTIONS AND FILLING BARREL SECTIONS WITH 1-INCH MINUS SELECT BACKFILL UNLESS OTHERWISE NOTED.
 - AFTER ACCEPTANCE OF ALL NEW SEWER INFRASTRUCTURE, ABANDON EXISTING SEWER MAINS WHERE SHOWN WITH FLOWABLE CDF UNLESS OTHERWISE NOTED. CONTRACTOR SHALL MONITOR CDF PUMPING TO ENSURE CDF DOES NOT OVERFLOW.



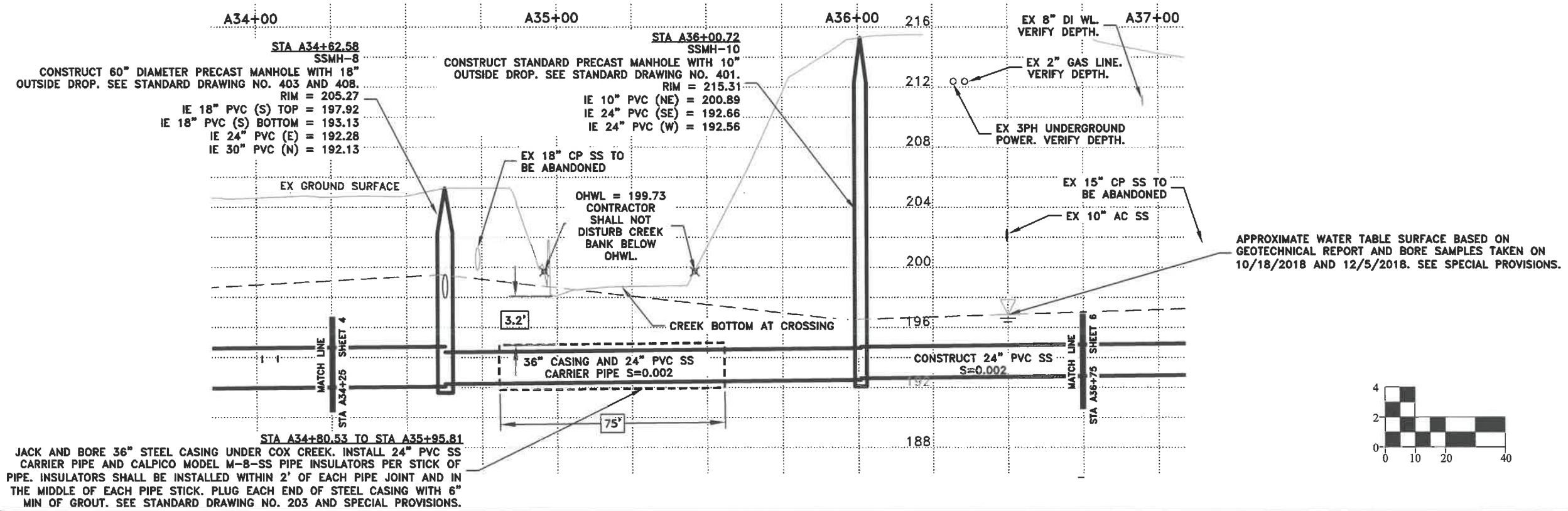
DESIGNED: L. SCHUMACHER	REVISIONS
DRAWN: L. SCHUMACHER	NO: --
CHECKED: C. CERKLEWSKI	BY: --
DATE: 12/22/2021	DATE: --

PUBLIC WORKS DEPARTMENT
ENGINEERING SERVICES

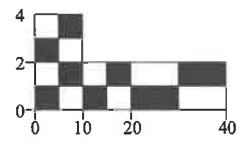


SS-22-01, COX CREEK INTERCEPTOR IMPROVEMENTS: PHASE 2
COX CREEK SEWER INTERCEPTOR - COX CREEK CROSSING

NEW COX CREEK SEWER INTERCEPTOR PROFILE



APPROXIMATE WATER TABLE SURFACE BASED ON GEOTECHNICAL REPORT AND BORE SAMPLES TAKEN ON 10/18/2018 AND 12/5/2018. SEE SPECIAL PROVISIONS.



COORDINATE WITH FRANCHISE UTILITIES TO PROTECT OR TEMPORARILY REMOVE/RELOCATE 3 PHASE OVERHEAD POWER, COMMUNICATIONS LINES AND GAS MAIN DURING CONSTRUCTION. CONTACT PACIFIC POWER A MINIMUM OF 10 WEEKS IN ADVANCE OF OVERHEAD POWER NEEDING TO BE RELOCATED. WORK WITHIN 20' HORIZONTALLY FROM OVERHEAD POWER LINES MUST TAKE PLACE BETWEEN OCTOBER 1, 2021 AND MAY 30, 2023. SEE SPECIAL PROVISIONS.

STA A37+35.42
INSTALL 24"x4" TEE. SEE NOTE 3 THIS SHEET. INSTALL 5' DEEP (APPROX.) PROPERTY LINE SEWER CLEANOUT AT PROPERTY LINE. VERIFY REQUIRED PROPERTY LINE CLEANOUT DEPTH PRIOR TO CONSTRUCTION.

AFTER ACCEPTANCE OF 24" AND 30" PIPE DOWNSTREAM OF SSMH-12, INSTALL 15" PVC 11.25 DEGREE BENDS AND PIPING TO CONNECT EXISTING 15" CP SS TO NEW SSMH-12 S=0.15 (APPROX). APPROXIMATE INVERT AT CONNECTION POINT IS 200.30. CONNECT PVC PIPING TO EX CONCRETE PIPE USING FLEXIBLE TRANSITION COUPLER.

GAS MAIN TO BE RELOCATED BY NW NATURAL PRIOR TO CONSTRUCTION. COORDINATE WITH NWN DURING CONSTRUCTION TO IDENTIFY NEW LOCATION OF GAS MAIN.

STA A37+51.11
SSMH-12
CONSTRUCT STANDARD PRECAST MANHOLE. NWN TO RELOCATE CONFLICTING GAS MAIN PRIOR TO SEWER CONSTRUCTION.

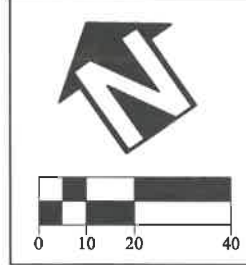
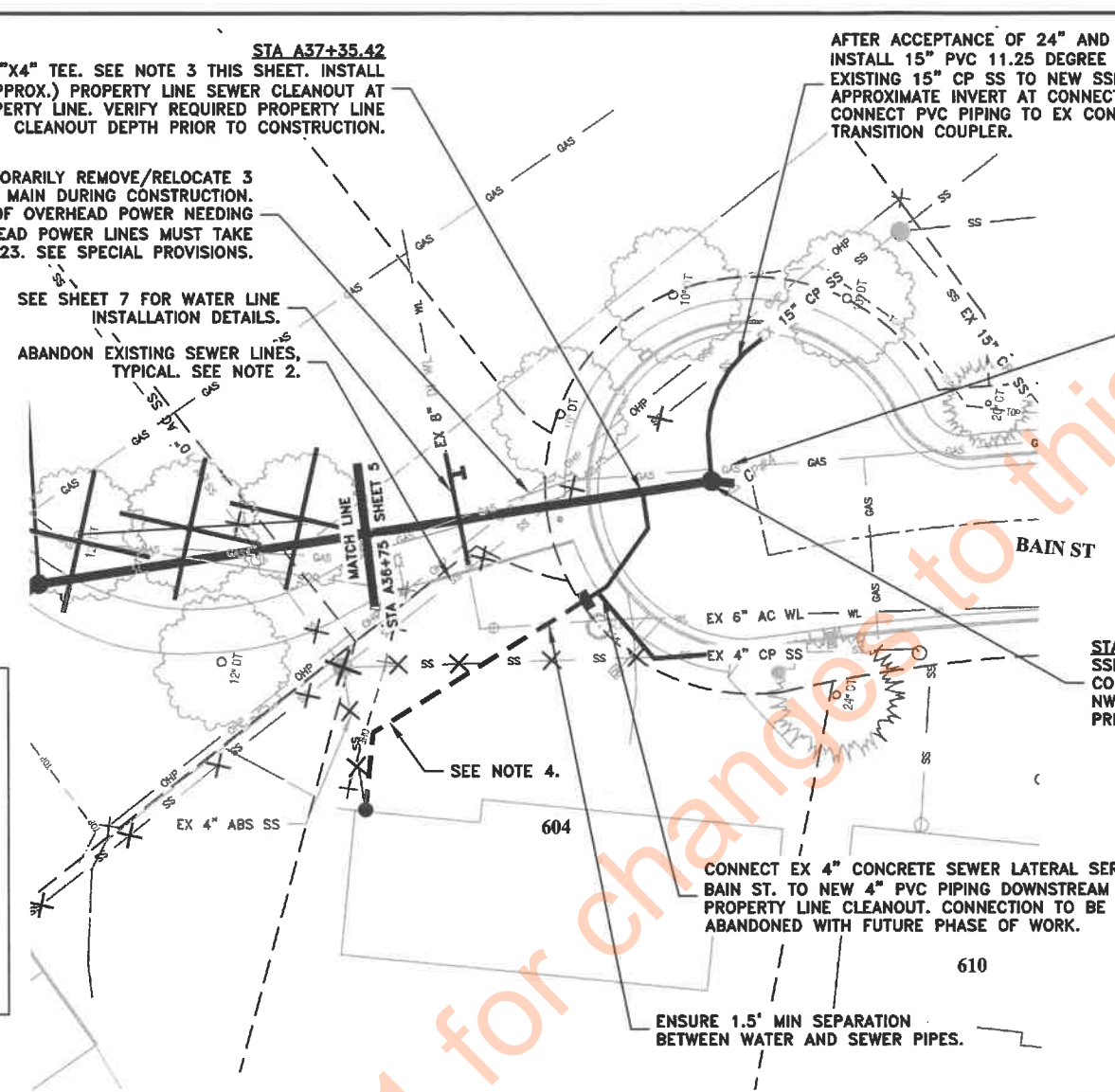
CONNECT EX 4" CONCRETE SEWER LATERAL SERVING 610 BAIN ST. TO NEW 4" PVC PIPING DOWNSTREAM OF NEW PROPERTY LINE CLEANOUT. CONNECTION TO BE ABANDONED WITH FUTURE PHASE OF WORK.

ENSURE 1.5' MIN SEPARATION BETWEEN WATER AND SEWER PIPES.

SEE SHEET 7 FOR WATER LINE INSTALLATION DETAILS.
ABANDON EXISTING SEWER LINES, TYPICAL SEE NOTE 2.

SEE NOTE 4.

- NOTES:**
- AFTER ACCEPTANCE OF ALL NEW SEWER INFRASTRUCTURE, ABANDON EXISTING MANHOLES WHERE SHOWN BY REMOVING CONE SECTIONS AND FILLING BARREL SECTIONS WITH 1-INCH MINUS SELECT BACKFILL UNLESS OTHERWISE NOTED.
 - AFTER ACCEPTANCE OF ALL NEW SEWER INFRASTRUCTURE, ABANDON EXISTING SEWER MAINS WHERE SHOWN WITH FLOWABLE CDF UNLESS OTHERWISE NOTED. CONTRACTOR SHALL MONITOR CDF PUMPING TO ENSURE CDF DOES NOT OVERFLOW.
 - CONSTRUCT NEW 4" SEWER SERVICE CONNECTION FROM NEW 24" SEWER MAIN TO PROPERTY LINE. SEE STANDARD DRAWING NO. 411. ENSURE SEWER PIPE HAS 5' MIN COVER IN ROW. CONNECT NEW SEWER SERVICE TO EXISTING LATERAL PIPING AFTER ACCEPTANCE OF NEW SEWER MAINS DOWNSTREAM OF LATERAL CONNECTION.
 - AFTER ACCEPTANCE OF SEWER MAINS DOWNSTREAM OF LATERAL CONNECTION, CONSTRUCT PRIVATE 4" SEWER LATERAL FROM PROPERTY LINE TO FOUNDATION OF HOME OR AS OTHERWISE SHOWN.



DESIGNED: L. SCHUMACHER	REVISIONS	BY:
DRAWN: L. SCHUMACHER	NO:	---
CHECKED: C. CERKLEWSKI	DATE:	---
DATE: 12/22/2021		

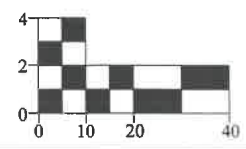
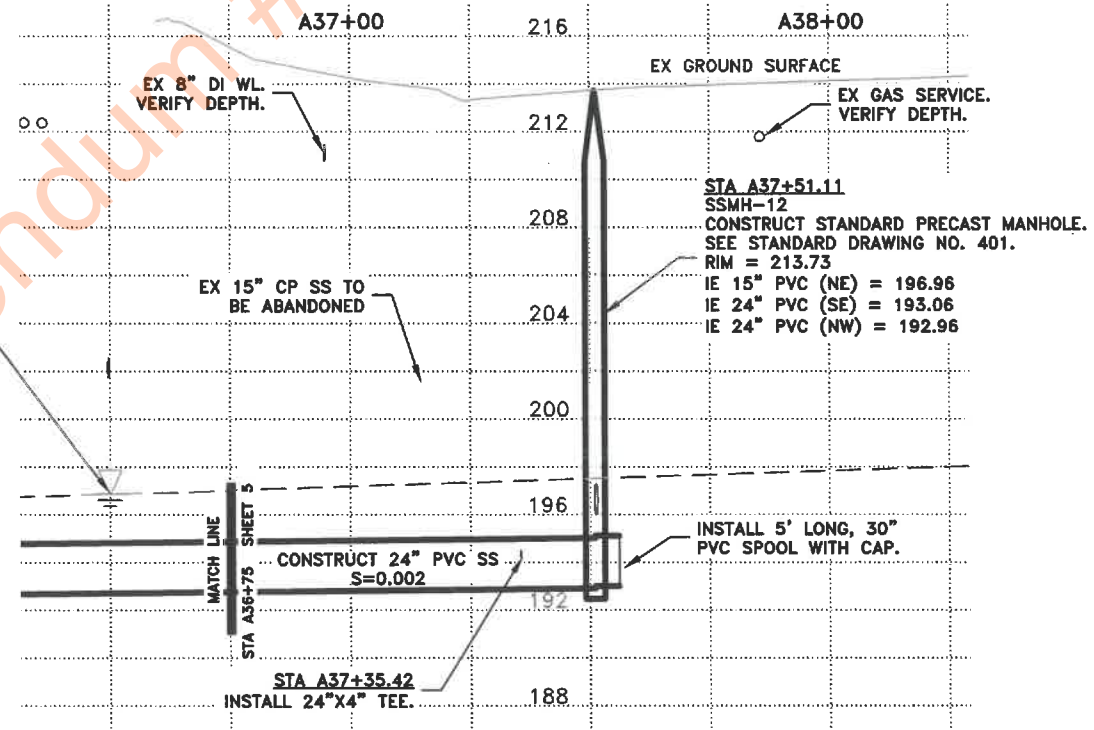
PUBLIC WORKS DEPARTMENT
ENGINEERING SERVICES



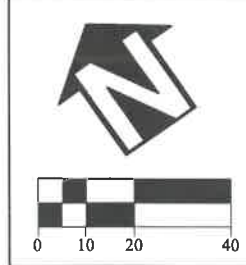
SS-22-01, COX CREEK INTERCEPTOR IMPROVEMENTS: PHASE 2
COX CREEK INTERCEPTOR - BAIN STREET

NEW COX CREEK SEWER INTERCEPTOR PROFILE

APPROXIMATE WATER TABLE SURFACE BASED ON GEOTECHNICAL REPORT AND BORE SAMPLES TAKEN ON 10/18/2018 AND 12/5/2018. SEE SPECIAL PROVISIONS.



SHEET NO. 6 OF 14
PROJECT NO: SS-22-01
FILE: BASE.DWG



DESIGNED: L. SCHUMACHER
 DRAWN: L. SCHUMACHER
 CHECKED: C. CERKLEWSKI
 DATE: 12/22/2021

REVISIONS	
NO.	BY:

COORDINATE WITH CITY ENGINEER TO ISOLATE SEGMENT OF WATER LINE IN CONFLICT WITH NEW SEWER MAIN INSTALLATION. ONCE ISOLATED, REMOVE 25' FEET OF EXISTING 8" DI WATER LINE AS SHOWN TO CONSTRUCT NEW SEWER MAIN. INSTALL TEMPORARY 8" MJ CAP WITH RETAINER GLAND ON EACH END OF EXISTING 8" DI WATER LINE (N,S). AFTER ACCEPTANCE OF NEW SEWER MAIN REMOVE TEMPORARY 8" MJ CAP ON EACH END OF EXISTING 8" DI WATER LINE (N,S) AND INSTALL 25' OF 8" DI WATER LINE. CENTER ONE STICK OF DI PIPE OVER 24" SEWER MAIN. DISINFECT ALL WATER LINE COMPONENTS PRIOR TO INSTALLATION. CONNECT TO EXISTING 8" DI WATER LINE WITH 8" DI SOLID SLEEVE COUPLERS.

NOTE:
 EXISTING 8" DI WATER LINE IS INTERNALLY RESTRAINED.



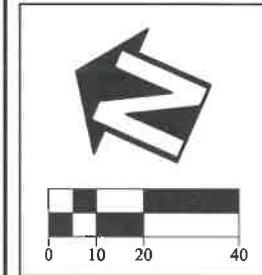
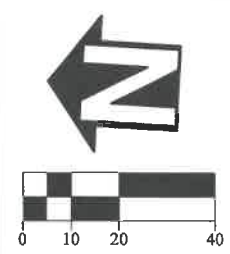
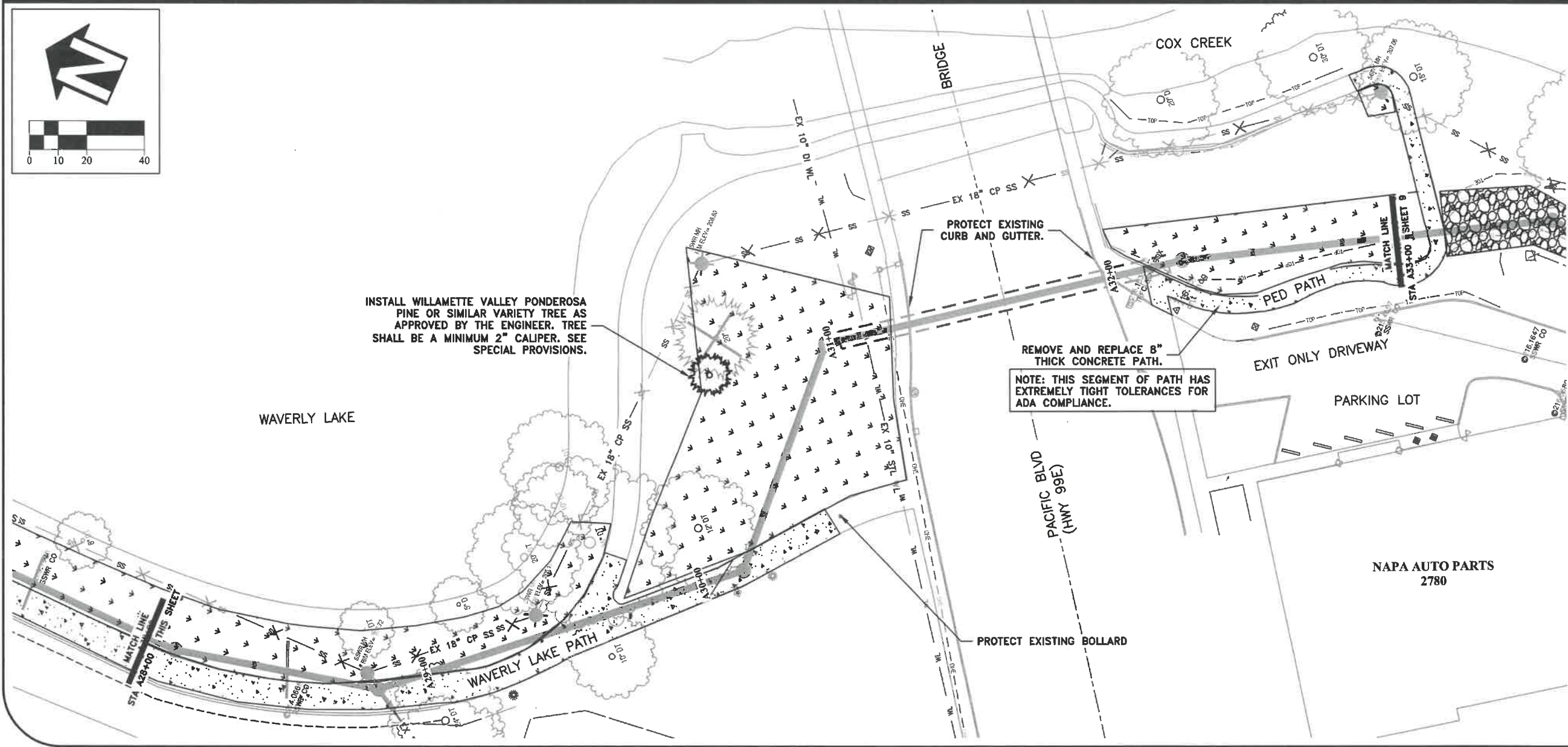
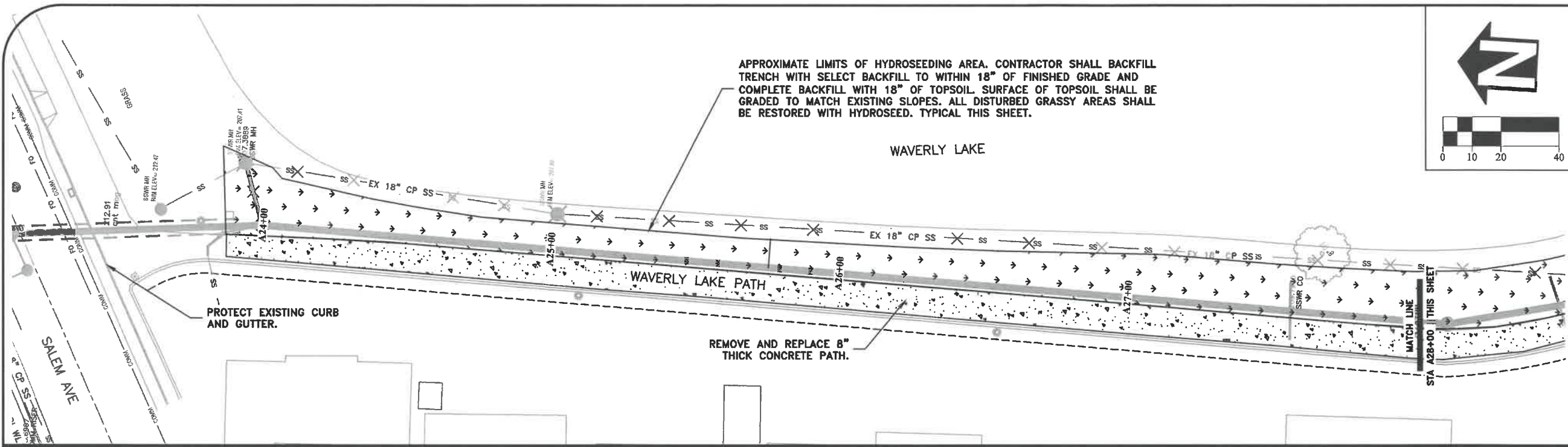
**PUBLIC WORKS DEPARTMENT
 ENGINEERING SERVICES**



**SS-22-01, COX CREEK INTERCEPTOR IMPROVEMENTS: PHASE 2
 BAIN STREET WATER LINE**




EXPIRES: 06/30/2022
 SHEET NO. 7 OF 14
 PROJECT NO: SS-22-01
 FILE: BASE.DWG



DESIGNED: L. SCHUMACHER	REVISIONS
DRAWN: L. SCHUMACHER	NO: ---
CHECKED: C. CERKLEWSKI	BY: ---
DATE: 12/22/2021	DATE: ---

PUBLIC WORKS DEPARTMENT
ENGINEERING SERVICES

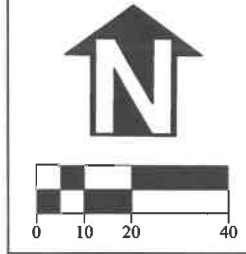


SS-22-01, COX CREEK INTERCEPTOR IMPROVEMENTS: PHASE 2
SURFACE RESTORATION PLAN - WAVERLY LAKE PATH

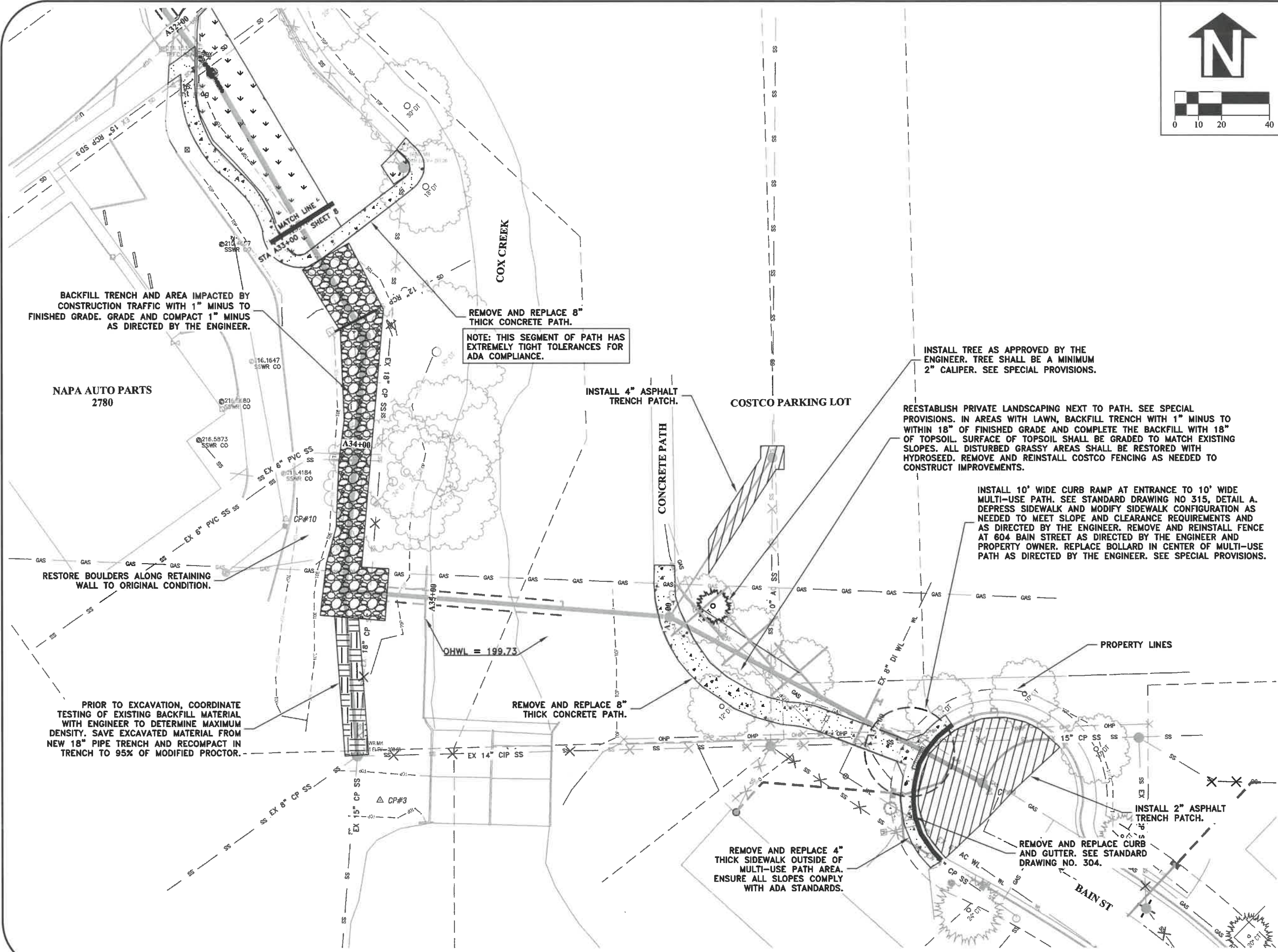
REGISTERED PROFESSIONAL
ENGINEER
85930PE
Lori L. Schumacher
OREGON
MARCH 13, 2018
LORI L. SCHUMACHER

EXPIRES: 06/30/2022

SHEET NO. 8 OF 14
PROJECT NO: SS-22-01
FILE: BASE.DWG



DESIGNED: L. SCHUMACHER	REVISIONS
DRAWN: L. SCHUMACHER	NO: ---
CHECKED: C. GERKLEWSKI	BY: ---
DATE: 12/22/2021	DATE: ---



BACKFILL TRENCH AND AREA IMPACTED BY CONSTRUCTION TRAFFIC WITH 1" MINUS TO FINISHED GRADE. GRADE AND COMPACT 1" MINUS AS DIRECTED BY THE ENGINEER.

REMOVE AND REPLACE 8" THICK CONCRETE PATH.
NOTE: THIS SEGMENT OF PATH HAS EXTREMELY TIGHT TOLERANCES FOR ADA COMPLIANCE.

INSTALL TREE AS APPROVED BY THE ENGINEER. TREE SHALL BE A MINIMUM 2" CALIPER. SEE SPECIAL PROVISIONS.

REESTABLISH PRIVATE LANDSCAPING NEXT TO PATH. SEE SPECIAL PROVISIONS. IN AREAS WITH LAWN, BACKFILL TRENCH WITH 1" MINUS TO WITHIN 18" OF FINISHED GRADE AND COMPLETE THE BACKFILL WITH 18" OF TOPSOIL. SURFACE OF TOPSOIL SHALL BE GRADED TO MATCH EXISTING SLOPES. ALL DISTURBED GRASSY AREAS SHALL BE RESTORED WITH HYDROSEED. REMOVE AND REINSTALL COSTCO FENCING AS NEEDED TO CONSTRUCT IMPROVEMENTS.

INSTALL 10' WIDE CURB RAMP AT ENTRANCE TO 10' WIDE MULTI-USE PATH. SEE STANDARD DRAWING NO 315, DETAIL A. DEPRESS SIDEWALK AND MODIFY SIDEWALK CONFIGURATION AS NEEDED TO MEET SLOPE AND CLEARANCE REQUIREMENTS AND AS DIRECTED BY THE ENGINEER. REMOVE AND REINSTALL FENCE AT 604 BAIN STREET AS DIRECTED BY THE ENGINEER AND PROPERTY OWNER. REPLACE BOLLARD IN CENTER OF MULTI-USE PATH AS DIRECTED BY THE ENGINEER. SEE SPECIAL PROVISIONS.

RESTORE BOULDERS ALONG RETAINING WALL TO ORIGINAL CONDITION.

PRIOR TO EXCAVATION, COORDINATE TESTING OF EXISTING BACKFILL MATERIAL WITH ENGINEER TO DETERMINE MAXIMUM DENSITY. SAVE EXCAVATED MATERIAL FROM NEW 18" PIPE TRENCH AND RECOMPACT IN TRENCH TO 95% OF MODIFIED PROCTOR.

REMOVE AND REPLACE 8" THICK CONCRETE PATH.

REMOVE AND REPLACE 4" THICK SIDEWALK OUTSIDE OF MULTI-USE PATH AREA. ENSURE ALL SLOPES COMPLY WITH ADA STANDARDS.

INSTALL 2" ASPHALT TRENCH PATCH.

REMOVE AND REPLACE CURB AND GUTTER. SEE STANDARD DRAWING NO. 304.

PUBLIC WORKS DEPARTMENT
ENGINEERING SERVICES



SS-22-01, COX CREEK INTERCEPTOR IMPROVEMENTS: PHASE 2
SURFACE RESTORATION PLAN - COX CREEK AND BAIN ST



EXPIRES: 06/30/2022

SHEET NO. 9 OF 14
PROJECT NO: SS-22-01
FILE: BASE.DWG

GENERAL EPSC NOTES:

1. TOTAL DISTURBED AREA OF PROJECT: 0.63 ACRES
2. A COPY OF THE 1200-CN EROSION PREVENTION AND SEDIMENT CONTROL PERMIT SHALL BE MAINTAINED ON SITE AT ALL TIMES.
3. PERMANENT RE-SEEDING OF DISTURBED NON-WETLAND SURFACES SHALL BE COMPLETED WITH A 50-50 BLEND OF PERENNIAL RYEGRASS AND FINE FESCUE OR APPROVED EQUAL AT A RATE OF 220 POUNDS PER ACRE UNLESS SHOWN OTHERWISE ON THE CONSTRUCTION DRAWINGS.
4. VACUUM SWEEP ALL CONCRETE GUTTERS AND UNDISTURBED PAVEMENT WITHIN THE PROJECT LIMITS, AS WELL AS SIDE STREETS AND CONSTRUCTION ENTRANCES WITHIN 300 FEET OF THE PROJECT LIMITS, AT LEAST ONCE PER WEEK AND AS DIRECTED BY THE ENGINEER.

STANDARD EPSC PERMIT CONDITIONS

1. PRIOR TO ANY GROUND DISTURBING ACTIVITY ON THE SITE, AN INITIAL INSPECTION BY CITY STAFF IS REQUIRED. EROSION PREVENTION AND SEDIMENT CONTROL (EPSC) MEASURES MUST BE IN PLACE PRIOR TO THE INSPECTOR ARRIVING. CALL (541) 791-0116 TO SCHEDULE YOUR INSPECTION.
2. EPSC MEASURES MUST BE INSTALLED IN SUCH A MANNER AS TO ENSURE THAT SEDIMENT AND SEDIMENT-LADEN WATER DOES NOT ENTER UPON ADJACENT PROPERTIES OR RIGHTS-OF-WAY, THE STORMWATER SYSTEM, WETLANDS, OR WATERS OF THE STATE.
3. EPSC MEASURES SHOWN ON THE PLANS ARE MINIMUM REQUIREMENTS FOR ANTICIPATED SITE CONDITIONS. DURING THE CONSTRUCTION PERIOD, THE EPSC MEASURES SHALL BE UPGRADED AS NEEDED FOR CHANGING CONDITIONS AND TO ENSURE THAT SEDIMENT AND SEDIMENT-LADEN WATER DOES NOT LEAVE THE SITE.
4. EPSC MEASURES SHALL BE INSPECTED DAILY BY THE PERMIT HOLDER, AND MAINTAINED AS NECESSARY TO ENSURE THEIR FUNCTION.
5. STABILIZED GRAVEL CONSTRUCTION ENTRANCES SHALL BE INSTALLED AT THE BEGINNING OF CONSTRUCTION AND MAINTAINED FOR THE DURATION OF THE PROJECT. ADDITIONAL MEASURES MAY BE REQUIRED TO ENSURE THAT ALL PAVED AREAS ARE KEPT CLEAN FOR THE DURATION OF THE PROJECT.
6. EPSC MEASURES SHALL BE KEPT IN PLACE UNTIL PERMANENT GROUND COVER IS ESTABLISHED.
7. EXPOSED SOIL MUST BE PERMANENTLY STABILIZED AGAINST WIND AND WATER EROSION BEFORE THE EPSC PERMIT CAN BE CLOSED. ONCE THE SITE IS STABILIZED, SCHEDULE A FINAL INSPECTION BY CALLING (541) 791-0116. PERMANENT SOIL STABILIZATION INCLUDES LANDSCAPING, SEEDING, OR COVERING EXPOSED SOIL WITH A MINIMUM 2-INCH LAYER OF BARK OR WOOD CHIPS.
8. IT IS THE PROPERTY OWNER'S RESPONSIBILITY TO ENSURE THAT ANY PROPOSED GRADING, FILL, EXCAVATION, OR OTHER SITE WORK DOES NOT NEGATIVELY IMPACT DRAINAGE PATTERNS TO OR FROM ADJACENT PROPERTIES.

WET WEATHER PERMIT CONDITIONS

1. WET WEATHER EROSION PREVENTION MEASURES WILL BE IN EFFECT FROM OCTOBER 1 THROUGH APRIL 30.
2. SOIL EXPOSED FOR MORE THAN 2 DAYS SHALL BE COVERED WITH PLASTIC SHEETING, MATTING, OR A 2-INCH LAYER OF MULCH, BARK, WOOD CHIPS, SAWDUST, OR STRAW TO MINIMIZE EROSION POTENTIAL.
3. EXPOSED SOILS SHALL BE SEEDED NO LATER THAN SEPTEMBER 1ST TO ALLOW TIME FOR PROPER GERMINATION AND GROWTH BEFORE THE WET WEATHER SEASON.
4. ANY DISTURBED AREAS NOT HYDROSEEDED BY SEPTEMBER 1ST SHALL BE HYDROSEEDED WITH A LAYER OF ECOBLANKET WITH TERRASEEDING BY REXIUS, INC. OR APPROVED EQUAL. NO ADDITIONAL PAYMENT WILL BE MADE FOR THE USE OF ECOBLANKET AND TERRASEEDING.

TRENCH DEWATERING PLAN

A DETAILED TRENCH DEWATERING PLAN SHALL BE SUBMITTED TO THE ENGINEER AT THE PRECONSTRUCTION CONFERENCE. THE PLAN SHALL SHOW HOW THE CONTRACTOR PLANS TO DEWATER THE TRENCHES DURING CONSTRUCTION WITHOUT TRANSPORTING SEDIMENT INTO STORM DRAINS AND BODIES OF WATER. SEE SPECIAL PROVISIONS.

TREE PROTECTION NOTES

TREES TO BE RETAINED WILL BE PROTECTED BY INSTALLATION OF TREE PROTECTION FENCING TO PREVENT INJURY TO TREE TRUNKS OR ROOTS,

DESIGNED: L. SCHUMACHER
 DRAWN: L. SCHUMACHER
 CHECKED: C. CERKLEWSKI
 DATE: 12/22/2021

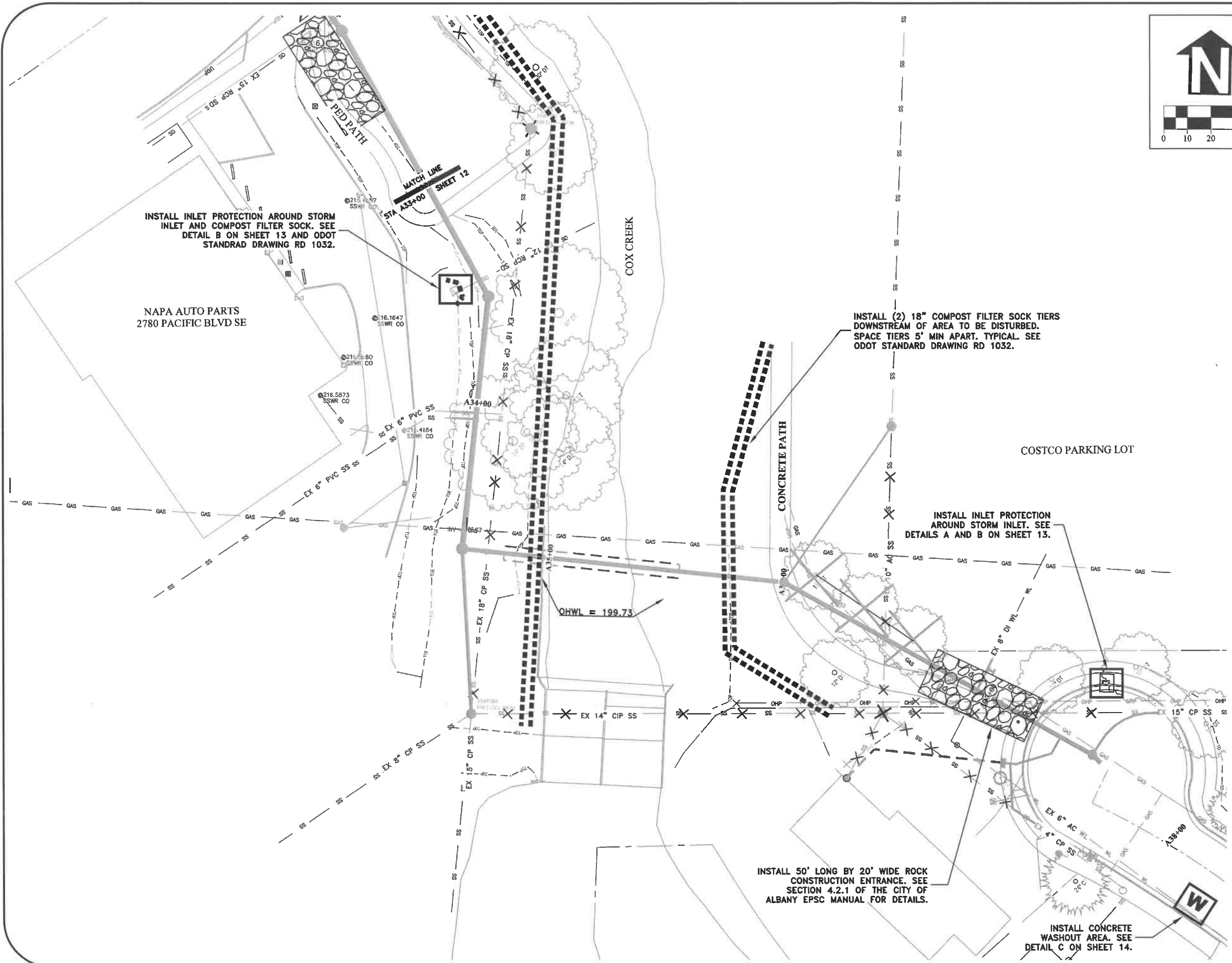
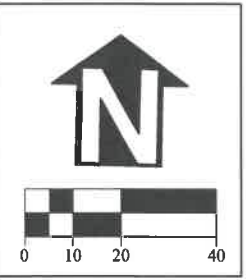
REVISIONS
 NO: BY: DATE:

**PUBLIC WORKS DEPARTMENT
 ENGINEERING SERVICES**



**SS-22-01, COX CREEK INTERCEPTOR IMPROVEMENTS: PHASE 2
 EPSC PLAN GENERAL NOTES**





INSTALL INLET PROTECTION AROUND STORM INLET AND COMPOST FILTER SOCK. SEE DETAIL B ON SHEET 13 AND ODOT STANDRAD DRAWING RD 1032.

INSTALL (2) 18" COMPOST FILTER SOCK TIERS DOWNSTREAM OF AREA TO BE DISTURBED. SPACE TIERS 5' MIN APART. TYPICAL SEE ODOT STANDARD DRAWING RD 1032.

INSTALL INLET PROTECTION AROUND STORM INLET. SEE DETAILS A AND B ON SHEET 13.

INSTALL 50' LONG BY 20' WIDE ROCK CONSTRUCTION ENTRANCE. SEE SECTION 4.2.1 OF THE CITY OF ALBANY EPSC MANUAL FOR DETAILS.

INSTALL CONCRETE WASHOUT AREA. SEE DETAIL C ON SHEET 14.

DESIGNED: L. SCHUMACHER
 DRAWN: L. SCHUMACHER
 CHECKED: C. CERKLEWSKI
 DATE: 12/22/2021

REVISIONS
 NO: ---
 BY: ---
 DATE: ---

PUBLIC WORKS DEPARTMENT
ENGINEERING SERVICES



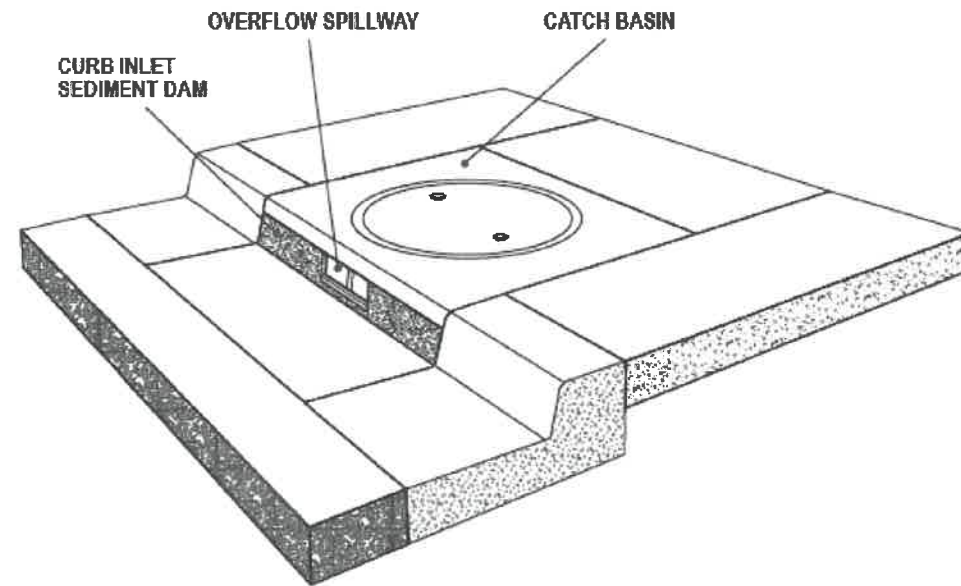
SS-22-01, COX CREEK INTERCEPTOR IMPROVEMENTS: PHASE 2
EPSC PLAN - COX CREEK



EXPIRES: 06/30/2022
 SHEET NO. 12 OF 14
 PROJECT NO: SS-22-01
 FILE: BASE.DWG

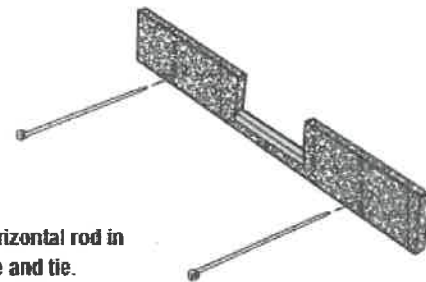
DETAIL A: CURB INLET SEDIMENT DAM

Curb Inlet Sediment Dam



PRODUCT DATA:
 Material: 100% Non-woven Polyfiber
 Color: Blue
 Height: 5" (Custom)
 Widths: 36" - 54" - 70" (Custom)

INSTALLATION:
 Place strap through hole(s) provided. Wrap around the horizontal rod in mouth of curb inlet and extend strap through adjacent hole and tie.



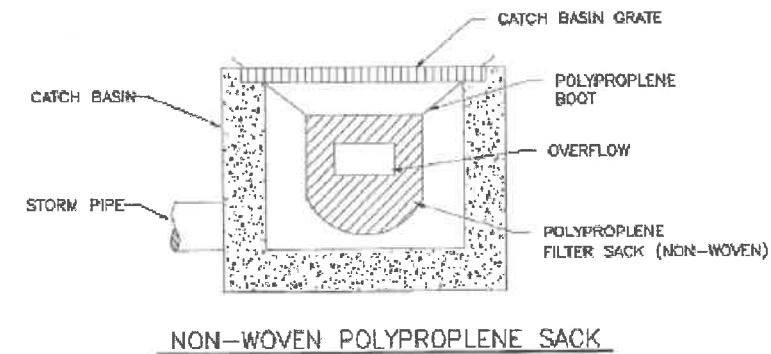
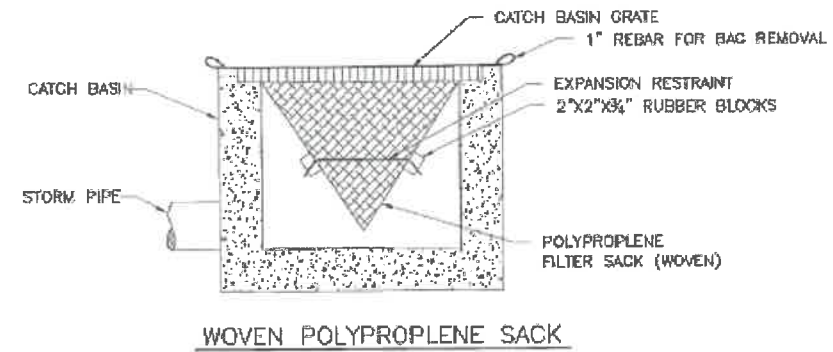
AMERICAN ENVIRONMENTAL PROTECTIVE SOLUTIONS & PRODUCT®
 29377 Airport Road
 Eugene OR 97402
 (541) 688-7609

DISTRIBUTED BY:

DETAIL B: CATCH BASIN INLET PROTECTION

Chapter 4

Diagram 4.3.7e
INLET PROTECTION TYPE 5



NOTE:
 1. RECESSED CURB INLET CATCH BASINS MUST BE BLOCKED WHEN USING FILTER FABRIC INLET SACKS. SIZE OF FILTER FABRIC INLET SACKS TO BE DETERMINED BY MANUFACTURER.

EPSC Manual

4 - 68

City of Albany

DESIGNED: L. SCHUMACHER
 DRAWN: L. SCHUMACHER
 CHECKED: C. CERKLEWSKI
 DATE: 12/22/2021

REVISIONS
 NO: BY: DATE:

**PUBLIC WORKS DEPARTMENT
 ENGINEERING SERVICES**



**SS-22-01, COX CREEK INTERCEPTOR IMPROVEMENTS: PHASE 2
 EPSC DETAILS**



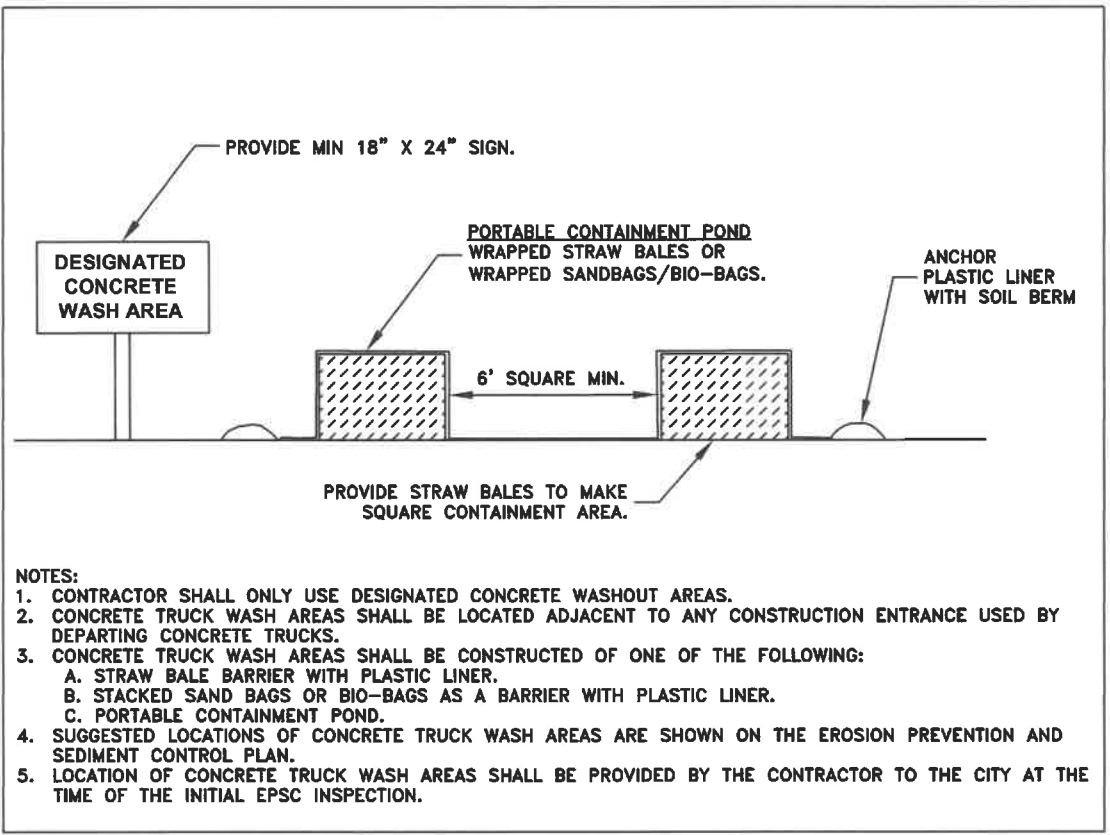
EXPIRES: 06/30/2022

SHEET NO. 13 OF 14

PROJECT NO: SS-22-01

FILE: BASE.DWG

DETAIL C: CONCRETE WASH AREA
NOT TO SCALE



DESIGNED: L. SCHUMACHER
DRAWN: L. SCHUMACHER
CHECKED: C. CERKLEWSKI
DATE: 12/22/2021

REVISIONS	
NO.	BY:

PUBLIC WORKS DEPARTMENT
ENGINEERING SERVICES



SS-22-01, COX CREEK INTERCEPTOR IMPROVEMENTS: PHASE 2
EPSC DETAILS



EXPIRES: 06/30/2022

SHEET NO. 14 OF 14
PROJECT NO: SS-22-01
FILE: BASE.DWG