

# CITY OF ALBANY

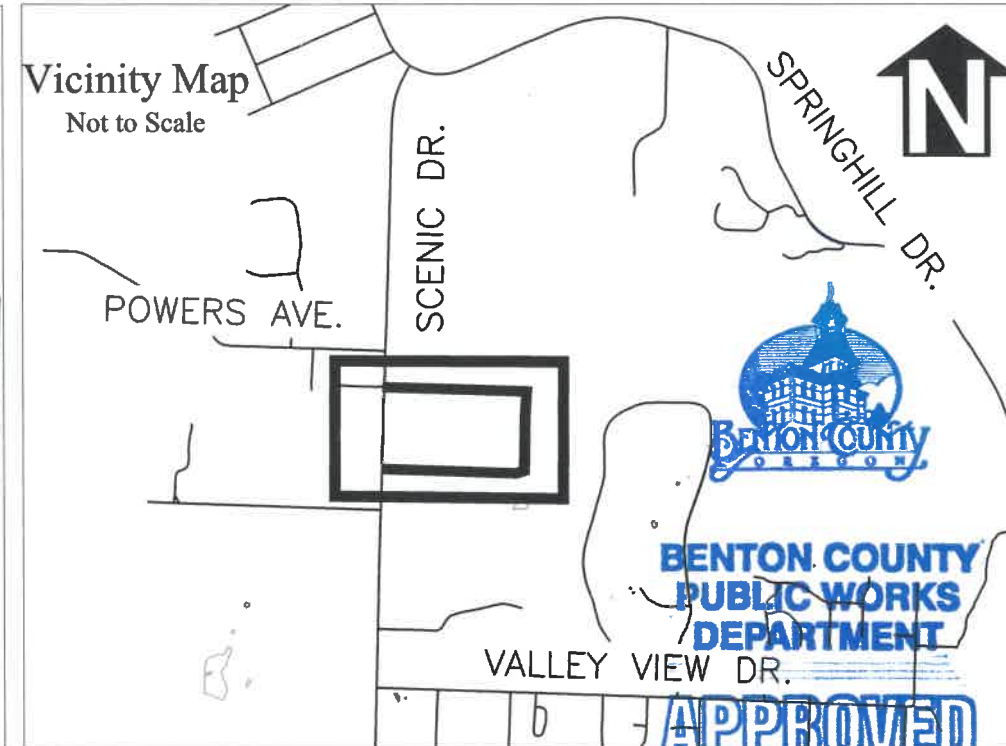
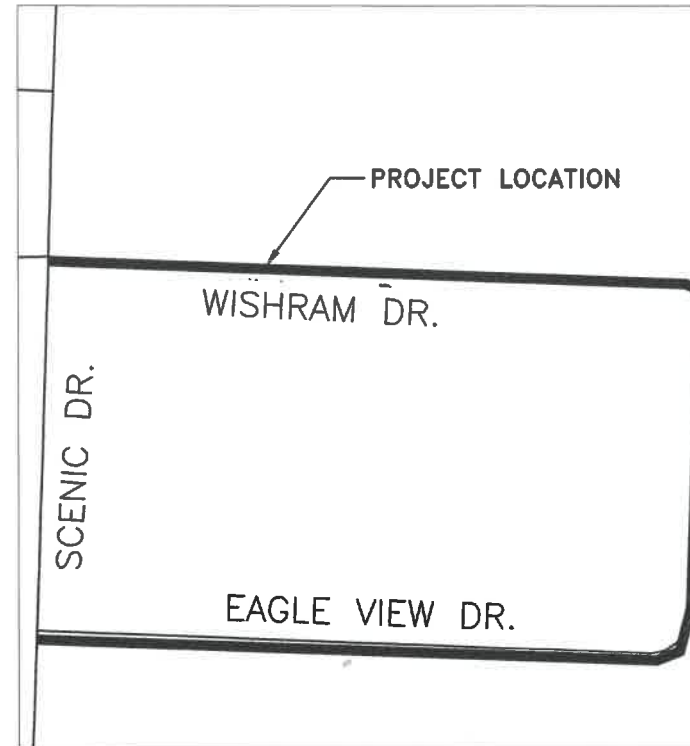
## WL-22-05, EAGLE VIEW & WISHRAM DRIVE WATER LINE

### SHEET INDEX

- SHEET NO. 1, COVER & GENERAL NOTES
- SHEET NO. 2, WISHRAM DR. WATERLINE STA. A0+00 to A4+73
- SHEET NO. 3, WISHRAM DR. WATERLINE STA. A4+73 to A9+95
- SHEET NO. 4, WISHRAM DR. WATERLINE STA. A9+95 to A14+51
- SHEET NO. 5, EAGLE VIEW DR. WATERLINE STA. B0+00 to B5+00
- SHEET NO. 6, EAGLE VIEW DR. WATERLINE STA. B5+00 to B10+25
- SHEET NO. 7, EAGLE VIEW DR. WATERLINE STA. B10+25 to B15+00
- SHEET NO. 8, EAGLE VIEW DR. WATERLINE STA. B15+00 to B19+68
- SHEET NO. 9, EAGLE VIEW DR. WATERLINE STA. B19+68 to B22+88
- SHEET NO. 10 & 11, DETAILS
- SHEET NO. 12, EROSION PREVENTION AND SEDIMENT CONTROL NOTES
- SHEET NO. 13, EROSION PREVENTION AND SEDIMENT CONTROL PLANS
- SHEET NO. 14, EROSION PREVENTION AND SEDIMENT CONTROL DETAILS

### LEGEND

- |  |                                       |  |                              |
|--|---------------------------------------|--|------------------------------|
|  | EXISTING WATER SERVICE                |  | EXISTING POWER POLE          |
|  | RECONNECT EXISTING METER              |  | EXISTING WATER LINE          |
|  | INSTALL NEW SERVICE WITH NO METER     |  | EXISTING GAS LINE            |
|  | REPLACE EXISTING METER WITH NEW METER |  | EXISTING STORM LINE          |
|  | AIR RELEASE VALVE                     |  | EXISTING SANITARY SEWER LINE |
|  | EXISTING WATER VALVE                  |  | EXISTING POWER LINES         |
|  | NEW WATER VALVE                       |  | EXISTING TRAFFIC SIGN        |
|  | NEW WATER LINE                        |  | EXISTING HYDRANT             |
|  |                                       |  | NEW HYDRANT                  |
|  |                                       |  | REDUCER                      |



### GENERAL NOTES

1. ALL CONSTRUCTION SHALL CONFORM TO THE CITY OF ALBANY STANDARD CONSTRUCTION SPECIFICATIONS AND ASSOCIATED STANDARD DRAWINGS. THE CURRENT VERSION OF THE CITY OF ALBANY STANDARD CONSTRUCTION SPECIFICATIONS CAN BE FOUND ON THE CITY'S WEBSITE AT [WWW.CITYOFALBANY.NET](http://WWW.CITYOFALBANY.NET).
2. UTILITIES SHOWN ARE FOR REFERENCE ONLY. FOR A FIELD LOCATE, CALL THE UTILITIES NOTIFICATIONS CENTER AT 1-800-332-2344.
3. OPERATING ACCESS FOR CITY MAINTENANCE PERSONNEL TO EXISTING AND NEW WATER VALVES AND MANHOLES SHALL BE CONTINUOUSLY MAINTAINED BY THE CONTRACTOR DURING ALL CONSTRUCTION ACTIVITIES.
4. CONTRACTOR SHALL VERIFY ALL EXISTING PIPE ELEVATIONS, PIPE DIAMETERS, AND PIPE MATERIALS AT CONNECTION AND ABANDONMENT LOCATIONS PRIOR TO CONSTRUCTION. ANY DISCREPANCIES SHALL BE REPORTED TO ENGINEER PRIOR TO BEGINNING WORK.
5. ATTENTION: OREGON LAW REQUIRES YOU TO FOLLOW RULES ADOPTED BY THE OREGON UTILITY NOTIFICATION CENTER. THOSE RULES ARE SET FORTH IN OAR 952-001-0010 THROUGH OAR 952-001-0090. YOU MAY OBTAIN COPIES OF THE RULES BY CALLING THE CENTER. (NOTE: THE TELEPHONE NUMBER FOR THE OREGON UTILITY NOTIFICATION CENTER IS (503) 232-1987).
6. CONTRACTOR SHALL BE RESPONSIBLE FOR PROPER INSTALLATION AND MAINTENANCE OF ALL EROSION PREVENTION SEDIMENT CONTROL (EPSC) MEASURES IN ACCORDANCE WITH LOCAL, STATE, AND FEDERAL REGULATIONS UNTIL ALL CONSTRUCTION IS COMPLETED AND APPROVED BY THE CITY OF ALBANY, AND VEGETATION/LANDSCAPING IS ESTABLISHED. FOR GUIDANCE, REFER TO THE CITY OF ALBANY EPSC MANUAL WHICH CAN BE FOUND AT [www.cityofalbany.net](http://www.cityofalbany.net).
7. EAGLE VIEW & WISHRAM DRIVE ARE UNDER THE JURISDICTION OF BENTON COUNTY. CONTRACTOR SHALL PROVIDE BENTON COUNTY A ONE YEAR WARRANTY BOND FOR ASPHALT TRENCH PATCHING. SEE SPECIAL PROVISIONS.
8. PAVEMENT RESTORATION SHALL CONFORM TO BENTON COUNTY DETAILS 201A&B FOR BOTH TRENCH PATCHING AND PAVEMENT SURFACE DAMAGED BY CONSTRUCTION ACTIVITIES. SEE SHEET 11 AND SPECIAL PROVISIONS.
9. WHEREVER POSSIBLE, TRENCHES FOR SERVICE CROSSINGS MUST BE COMBINED. SIDE BY SIDE TRENCH CROSSINGS SHOULD BE AVOIDED. WHERE SIDE BY SIDE TRENCH CROSSINGS ARE UNAVOIDABLE, FULL-DEPTH SURFACE RESTORATION PER BENTON COUNTY DETAILS 201A&B IS REQUIRED BETWEEN THE TRENCH CUTS.
10. THE USE OF STEEL CLEATED TRACKS IS NOT PERMITTED ON PAVED SURFACING.
11. CITY STAFF SHALL PHOTOGRAPHICALLY DOCUMENT PAVEMENT CONDITION BEFORE AND AFTER COMPLETION OF THIS PROJECT FOR SUBMITTAL TO BENTON COUNTY.
12. CONTRACTOR MUST NOT BEGIN EXCAVATION FOR WATER MAINS OR SERVICES UNTIL ALL PIPE AND FITTINGS ARE ON SITE AND HAVE BEEN INSPECTED AND APPROVED BY THE ENGINEER.
13. CONTRACTOR SHALL PROTECT EXISTING ASBESTOS CEMENT WATERLINES AT ALL TIMES DURING CONSTRUCTION ACTIVITIES.

|                        |           |
|------------------------|-----------|
| DESIGNED: A. MONACO    | REVISIONS |
| DRAWN: A. MONACO       | NO: --    |
| CHECKED: C. CERKLEWSKI | BY: --    |
| DATE: 2/3/2022         | NO: --    |
|                        | DATE: --  |

PUBLIC WORKS DEPARTMENT  
ENGINEERING SERVICES

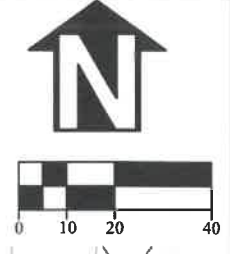
WL-22-05, EAGLE VIEW & WISHRAM DRIVE WATER LINE

EXPIRATION DATE: 12/31/2023

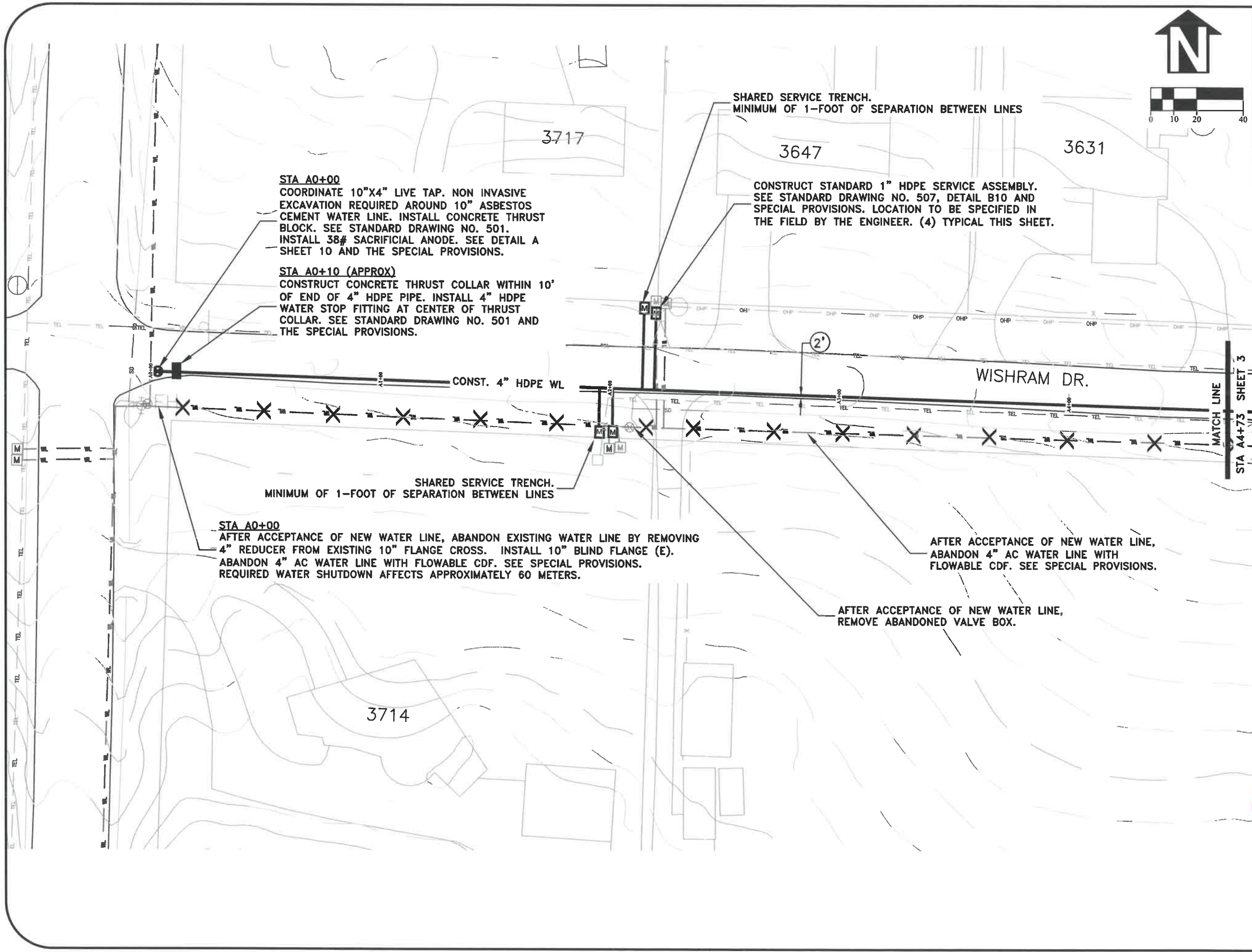
SHEET NO. 1 OF 14

PROJECT NO: WL-22-05

FILE: FILENAME.DWG



|                        |           |
|------------------------|-----------|
| DESIGNED: A. MONACO    | REVISIONS |
| DRAWN: A. MONACO       | NO: --    |
| CHECKED: C. CERKLEWSKI | BY: --    |
| DATE: 2/3/2022         | NO: --    |
|                        | DATE: --  |



**STA A0+00**  
 COORDINATE 10"x4" LIVE TAP. NON INVASIVE EXCAVATION REQUIRED AROUND 10" ASBESTOS CEMENT WATER LINE. INSTALL CONCRETE THRUST BLOCK. SEE STANDARD DRAWING NO. 501. INSTALL 38# SACRIFICIAL ANODE. SEE DETAIL A SHEET 10 AND THE SPECIAL PROVISIONS.

**STA A0+10 (APPROX)**  
 CONSTRUCT CONCRETE THRUST COLLAR WITHIN 10' OF END OF 4" HDPE PIPE. INSTALL 4" HDPE WATER STOP FITTING AT CENTER OF THRUST COLLAR. SEE STANDARD DRAWING NO. 501 AND THE SPECIAL PROVISIONS.

SHARED SERVICE TRENCH.  
 MINIMUM OF 1-FOOT OF SEPARATION BETWEEN LINES

CONSTRUCT STANDARD 1" HDPE SERVICE ASSEMBLY. SEE STANDARD DRAWING NO. 507, DETAIL B10 AND SPECIAL PROVISIONS. LOCATION TO BE SPECIFIED IN THE FIELD BY THE ENGINEER. (4) TYPICAL THIS SHEET.

SHARED SERVICE TRENCH.  
 MINIMUM OF 1-FOOT OF SEPARATION BETWEEN LINES

**STA A0+00**  
 AFTER ACCEPTANCE OF NEW WATER LINE, ABANDON EXISTING WATER LINE BY REMOVING 4" REDUCER FROM EXISTING 10" FLANGE CROSS. INSTALL 10" BLIND FLANGE (E). ABANDON 4" AC WATER LINE WITH FLOWABLE CDF. SEE SPECIAL PROVISIONS. REQUIRED WATER SHUTDOWN AFFECTS APPROXIMATELY 60 METERS.

AFTER ACCEPTANCE OF NEW WATER LINE, ABANDON 4" AC WATER LINE WITH FLOWABLE CDF. SEE SPECIAL PROVISIONS.

AFTER ACCEPTANCE OF NEW WATER LINE, REMOVE ABANDONED VALVE BOX.

**PUBLIC WORKS DEPARTMENT**  
**ENGINEERING SERVICES**



**WL-22-05, EAGLE VIEW & WISHRAM DRIVE WATER LINE**  
**WISHRAM**



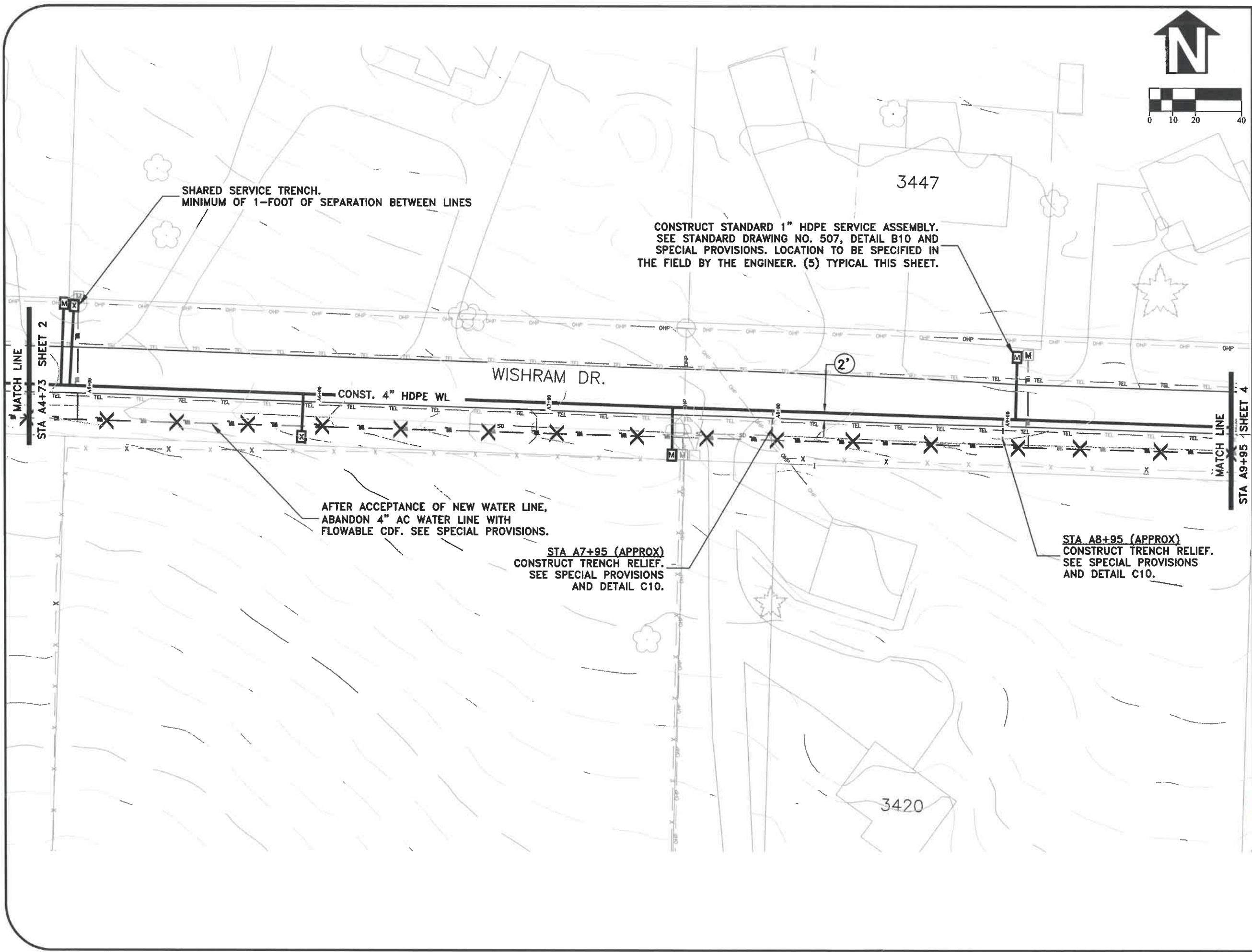
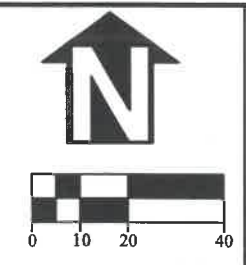
EXPIRATION DATE: 12/31/2023

SHEET NO. 2 OF 14

PROJECT NO: WL-22-05

FILE: EAGLE.DWG





SHARED SERVICE TRENCH.  
MINIMUM OF 1-FOOT OF SEPARATION BETWEEN LINES

CONSTRUCT STANDARD 1" HDPE SERVICE ASSEMBLY.  
SEE STANDARD DRAWING NO. 507, DETAIL B10 AND  
SPECIAL PROVISIONS. LOCATION TO BE SPECIFIED IN  
THE FIELD BY THE ENGINEER. (5) TYPICAL THIS SHEET.

AFTER ACCEPTANCE OF NEW WATER LINE,  
ABANDON 4" AC WATER LINE WITH  
FLOWABLE CDF. SEE SPECIAL PROVISIONS.

STA A7+95 (APPROX)  
CONSTRUCT TRENCH RELIEF.  
SEE SPECIAL PROVISIONS  
AND DETAIL C10.

STA A8+95 (APPROX)  
CONSTRUCT TRENCH RELIEF.  
SEE SPECIAL PROVISIONS  
AND DETAIL C10.

|                        |           |
|------------------------|-----------|
| DESIGNED: A. MONACO    | REVISIONS |
| DRAWN: A. MONACO       | NO: --    |
| CHECKED: C. CERKLEWSKI | BY: --    |
| DATE: 2/3/2022         | DATE: --  |

**PUBLIC WORKS DEPARTMENT**  
**ENGINEERING SERVICES**

**WL-22-05, EAGLE VIEW & WISHRAM DRIVE WATER LINE**  
**WISHRAM**



EXPIRATION DATE: 12/31/2023

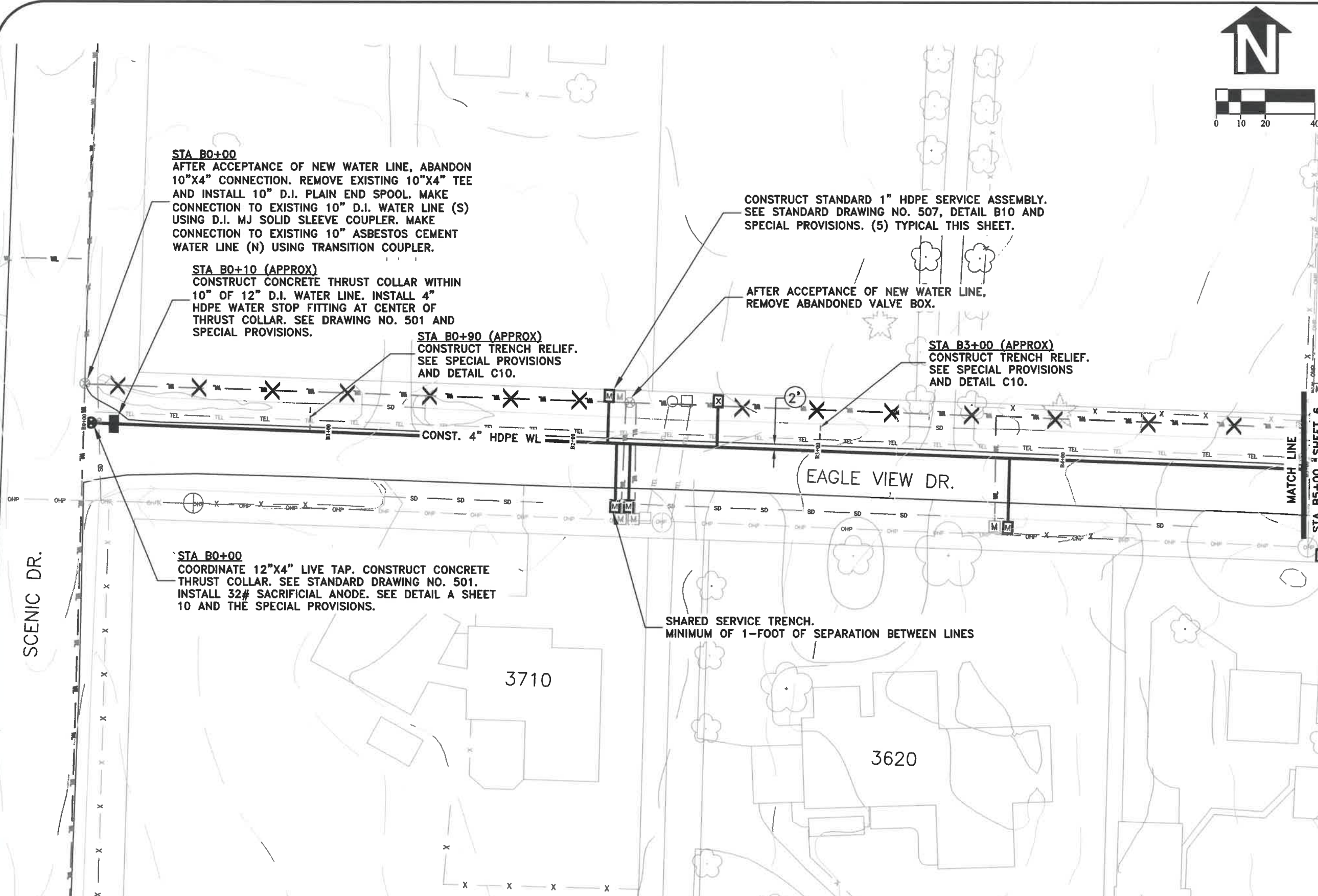
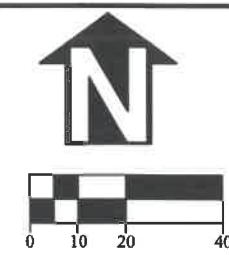
SHEET NO. 3 OF 14

PROJECT NO: WL-22-05

FILE: EAGLE.DWG







**STA B0+00**  
 AFTER ACCEPTANCE OF NEW WATER LINE, ABANDON 10"x4" CONNECTION. REMOVE EXISTING 10"x4" TEE AND INSTALL 10" D.I. PLAIN END SPOOL. MAKE CONNECTION TO EXISTING 10" D.I. WATER LINE (S) USING D.I. MJ SOLID SLEEVE COUPLER. MAKE CONNECTION TO EXISTING 10" ASBESTOS CEMENT WATER LINE (N) USING TRANSITION COUPLER.

**STA B0+10 (APPROX)**  
 CONSTRUCT CONCRETE THRUST COLLAR WITHIN 10" OF 12" D.I. WATER LINE. INSTALL 4" HDPE WATER STOP FITTING AT CENTER OF THRUST COLLAR. SEE DRAWING NO. 501 AND SPECIAL PROVISIONS.

**STA B0+90 (APPROX)**  
 CONSTRUCT TRENCH RELIEF. SEE SPECIAL PROVISIONS AND DETAIL C10.

CONSTRUCT STANDARD 1" HDPE SERVICE ASSEMBLY. SEE STANDARD DRAWING NO. 507, DETAIL B10 AND SPECIAL PROVISIONS. (5) TYPICAL THIS SHEET.

AFTER ACCEPTANCE OF NEW WATER LINE, REMOVE ABANDONED VALVE BOX.

**STA B3+00 (APPROX)**  
 CONSTRUCT TRENCH RELIEF. SEE SPECIAL PROVISIONS AND DETAIL C10.

**STA B0+00**  
 COORDINATE 12"x4" LIVE TAP. CONSTRUCT CONCRETE THRUST COLLAR. SEE STANDARD DRAWING NO. 501. INSTALL 32# SACRIFICIAL ANODE. SEE DETAIL A SHEET 10 AND THE SPECIAL PROVISIONS.

SHARED SERVICE TRENCH. MINIMUM OF 1-FOOT OF SEPARATION BETWEEN LINES

|                        |           |
|------------------------|-----------|
| DESIGNED: A. MONACO    | REVISIONS |
| DRAWN: A. MONACO       | NO: --    |
| CHECKED: C. CERKLEWSKI | BY: --    |
| DATE: 2/3/2022         | DATE: --  |

**PUBLIC WORKS DEPARTMENT**  
**ENGINEERING SERVICES**

**WL-22-05, EAGLE VIEW & WISHRAM DRIVE WATER LINE**  
**EAGLE VIEW**

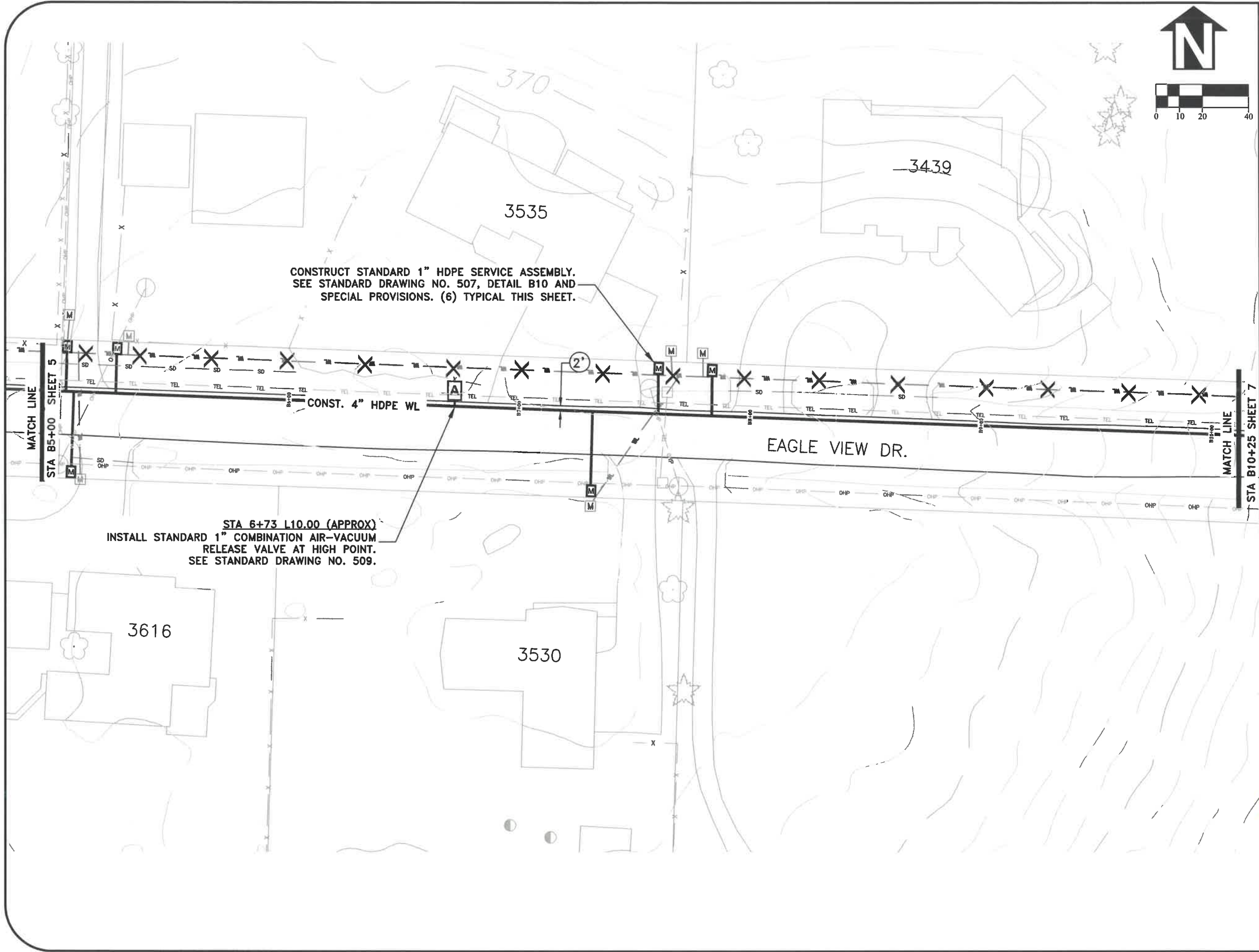


EXPIRATION DATE: 12/31/2023

SHEET NO. 5 OF 14

PROJECT NO: WL-22-05

FILE: EAGLE.DWG



CONSTRUCT STANDARD 1" HDPE SERVICE ASSEMBLY.  
SEE STANDARD DRAWING NO. 507, DETAIL B10 AND  
SPECIAL PROVISIONS. (6) TYPICAL THIS SHEET.

STA 6+73 L10.00 (APPROX)  
INSTALL STANDARD 1" COMBINATION AIR-VACUUM  
RELEASE VALVE AT HIGH POINT.  
SEE STANDARD DRAWING NO. 509.

|                        |            |
|------------------------|------------|
| DESIGNED: A. MONACO    | REVISIONS: |
| DRAWN: A. MONACO       | NO: ---    |
| CHECKED: C. CERKLEWSKI | BY: ---    |
| DATE: 2/3/2022         | DATE: ---  |

**PUBLIC WORKS DEPARTMENT**  
**ENGINEERING SERVICES**

**WL-22-05, EAGLE VIEW & WISHRAM DRIVE WATER LINE**  
**EAGLE VIEW**



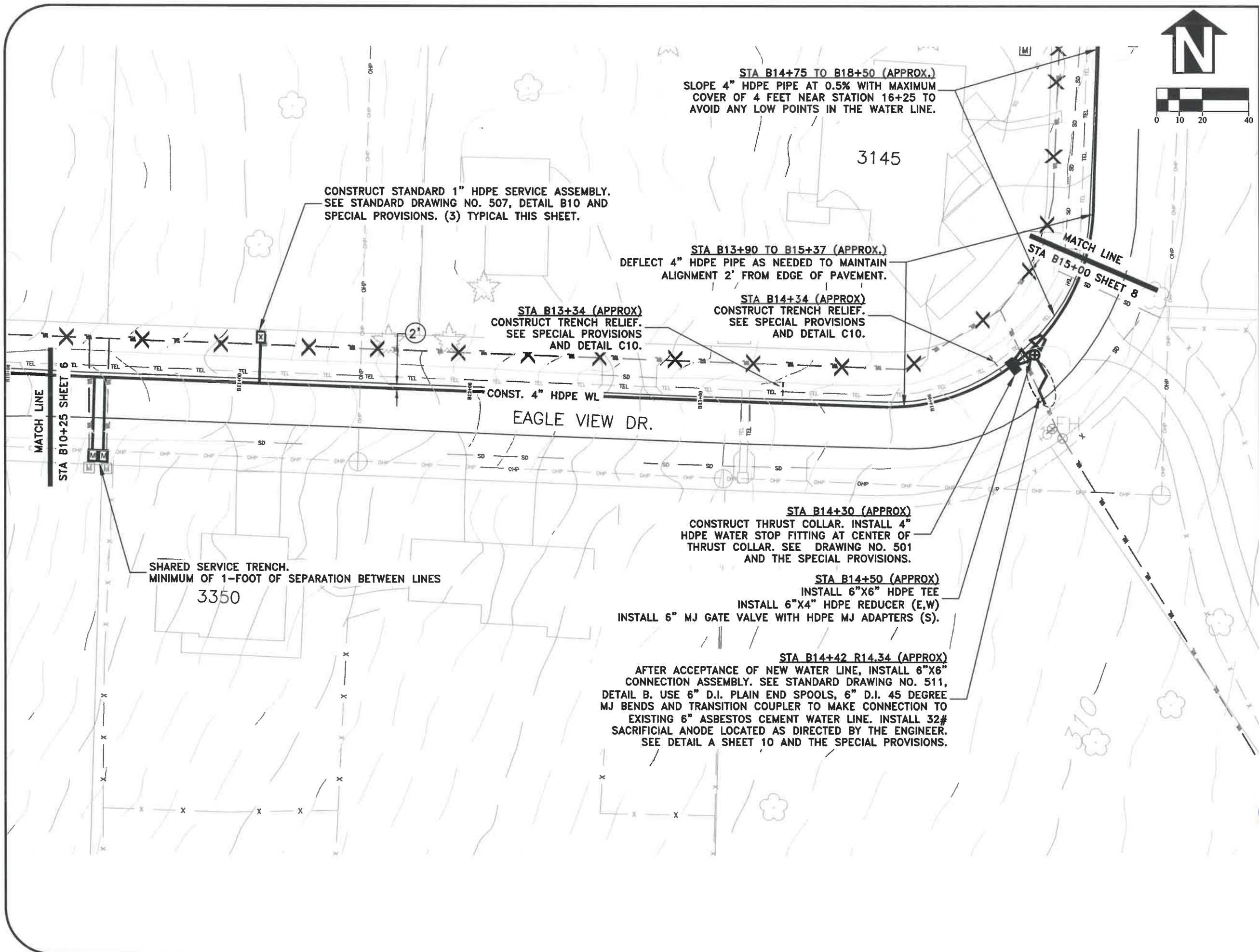
EXPIRATION DATE: 12/31/2023

SHEET NO. 6 OF 14

PROJECT NO: WL-22-05

FILE: EAGLE.DWG





**STA B14+75 TO B18+50 (APPROX.)**  
 SLOPE 4" HDPE PIPE AT 0.5% WITH MAXIMUM COVER OF 4 FEET NEAR STATION 16+25 TO AVOID ANY LOW POINTS IN THE WATER LINE.

CONSTRUCT STANDARD 1" HDPE SERVICE ASSEMBLY. SEE STANDARD DRAWING NO. 507, DETAIL B10 AND SPECIAL PROVISIONS. (3) TYPICAL THIS SHEET.

**STA B13+90 TO B15+37 (APPROX.)**  
 DEFLECT 4" HDPE PIPE AS NEEDED TO MAINTAIN ALIGNMENT 2' FROM EDGE OF PAVEMENT.

**STA B13+34 (APPROX)**  
 CONSTRUCT TRENCH RELIEF. SEE SPECIAL PROVISIONS AND DETAIL C10.

**STA B14+34 (APPROX)**  
 CONSTRUCT TRENCH RELIEF. SEE SPECIAL PROVISIONS AND DETAIL C10.

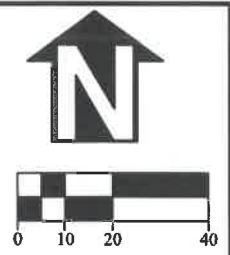
CONST. 4" HDPE WL  
 EAGLE VIEW DR.

**STA B14+30 (APPROX)**  
 CONSTRUCT THRUST COLLAR. INSTALL 4" HDPE WATER STOP FITTING AT CENTER OF THRUST COLLAR. SEE DRAWING NO. 501 AND THE SPECIAL PROVISIONS.

**STA B14+50 (APPROX)**  
 INSTALL 6"x6" HDPE TEE  
 INSTALL 6"x4" HDPE REDUCER (E,W)  
 INSTALL 6" MJ GATE VALVE WITH HDPE MJ ADAPTERS (S).

**STA B14+42 R14.34 (APPROX)**  
 AFTER ACCEPTANCE OF NEW WATER LINE, INSTALL 6"x6" CONNECTION ASSEMBLY. SEE STANDARD DRAWING NO. 511, DETAIL B. USE 6" D.I. PLAIN END SPOOLS, 6" D.I. 45 DEGREE MJ BENDS AND TRANSITION COUPLER TO MAKE CONNECTION TO EXISTING 6" ASBESTOS CEMENT WATER LINE. INSTALL 32# SACRIFICIAL ANODE LOCATED AS DIRECTED BY THE ENGINEER. SEE DETAIL A SHEET 10 AND THE SPECIAL PROVISIONS.

SHARED SERVICE TRENCH.  
 MINIMUM OF 1-FOOT OF SEPARATION BETWEEN LINES  
 3350



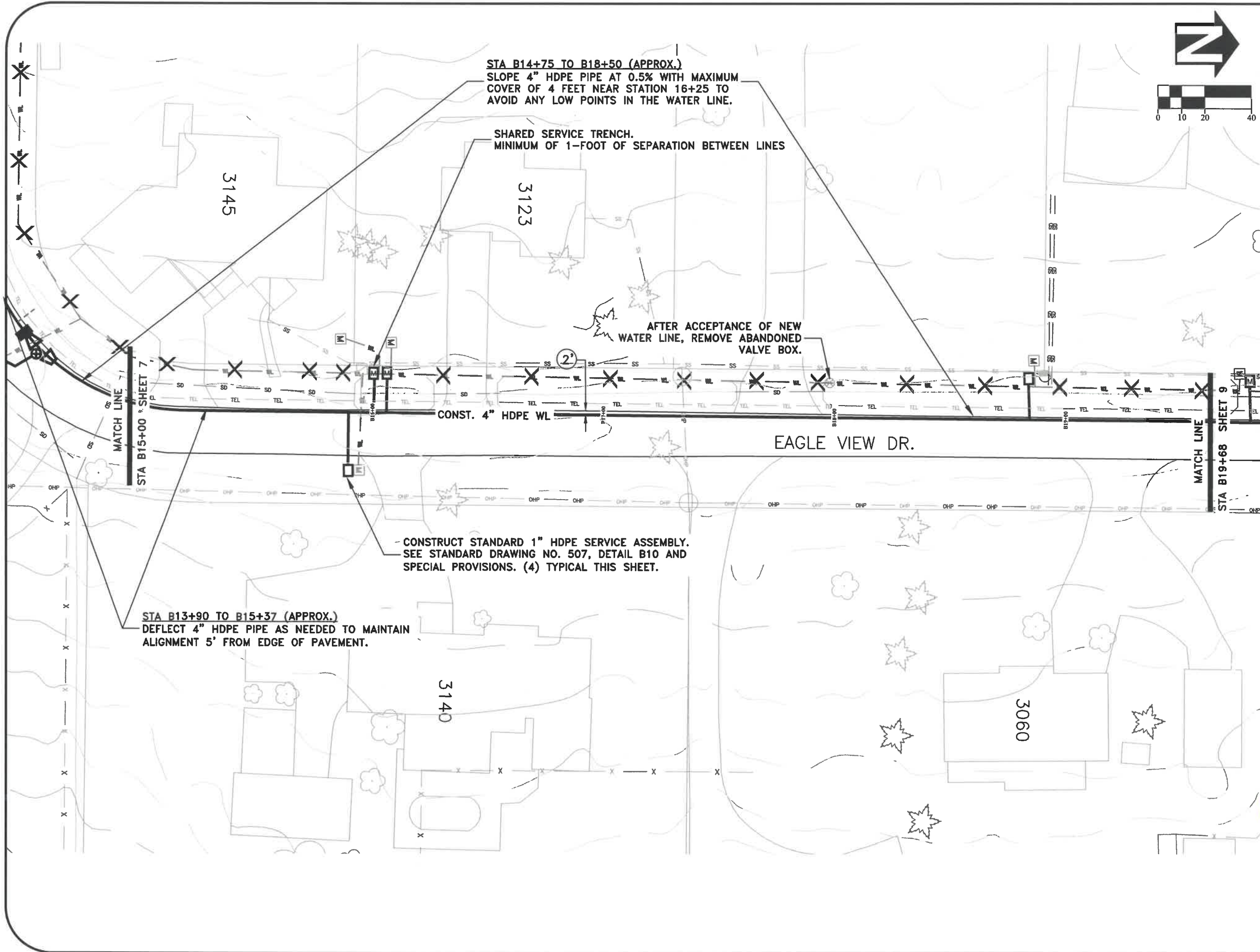
|                        |           |
|------------------------|-----------|
| DESIGNED: A. MONACO    | REVISIONS |
| DRAWN: A. MONACO       | NO: --    |
| CHECKED: C. CERKLEWSKI | BY: --    |
| DATE: 2/3/2022         | DATE: --  |

**PUBLIC WORKS DEPARTMENT  
 ENGINEERING SERVICES**

**WL-22-05, EAGLE VIEW & WISHRAM DRIVE WATER LINE  
 EAGLE VIEW**



EXPIRATION DATE: 12/31/2023  
 SHEET NO. 7 OF 14  
 PROJECT NO: WL-22-05  
 FILE: EAGLE.DWG



STA B14+75 TO B18+50 (APPROX.)  
 SLOPE 4" HDPE PIPE AT 0.5% WITH MAXIMUM COVER OF 4 FEET NEAR STATION 16+25 TO AVOID ANY LOW POINTS IN THE WATER LINE.

SHARED SERVICE TRENCH.  
 MINIMUM OF 1-FOOT OF SEPARATION BETWEEN LINES


AFTER ACCEPTANCE OF NEW WATER LINE, REMOVE ABANDONED VALVE BOX.

CONSTRUCT STANDARD 1" HDPE SERVICE ASSEMBLY. SEE STANDARD DRAWING NO. 507, DETAIL B10 AND SPECIAL PROVISIONS. (4) TYPICAL THIS SHEET.

STA B13+90 TO B15+37 (APPROX.)  
 DEFLECT 4" HDPE PIPE AS NEEDED TO MAINTAIN ALIGNMENT 5' FROM EDGE OF PAVEMENT.

|                        |           |
|------------------------|-----------|
| DESIGNED: A. MONACO    | REVISIONS |
| DRAWN: A. MONACO       | NO: --    |
| CHECKED: C. CERKLEWSKI | BY: --    |
| DATE: 2/3/2022         | NO: --    |
|                        | DATE: --  |

**PUBLIC WORKS DEPARTMENT**  
**ENGINEERING SERVICES**



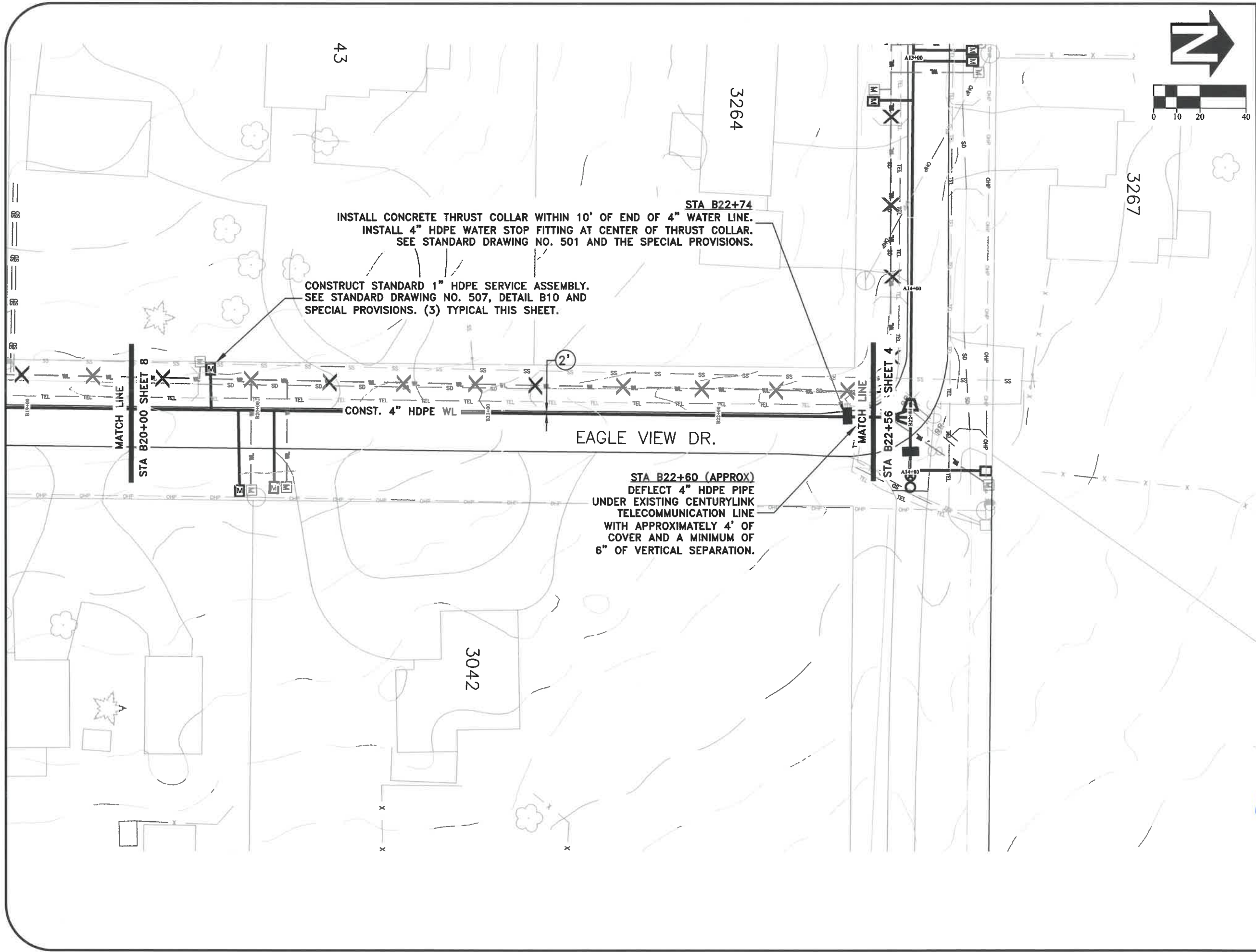
**WL-22-05, EAGLE VIEW & WISHRAM DRIVE WATER LINE**  
**EAGLE VIEW**

REGISTERED PROFESSIONAL  
 ENGINEER  
 56,471PE  
*Christopher L. Cerkowski*  
 OREGON  
 JULY 9, 2002  
 CHRISTOPHER L. CERKLEWSKI

EXPIRATION DATE: 12/31/2023

SHEET NO. 8 OF 14  
 PROJECT NO: WL-22-05  
 FILE: EAGLE.DWG





INSTALL CONCRETE THRUST COLLAR WITHIN 10' OF END OF 4" WATER LINE.  
 INSTALL 4" HDPE WATER STOP FITTING AT CENTER OF THRUST COLLAR.  
 SEE STANDARD DRAWING NO. 501 AND THE SPECIAL PROVISIONS.

CONSTRUCT STANDARD 1" HDPE SERVICE ASSEMBLY.  
 SEE STANDARD DRAWING NO. 507, DETAIL B10 AND  
 SPECIAL PROVISIONS. (3) TYPICAL THIS SHEET.

STA B22+60 (APPROX)  
 DEFLECT 4" HDPE PIPE  
 UNDER EXISTING CENTURYLINK  
 TELECOMMUNICATION LINE  
 WITH APPROXIMATELY 4' OF  
 COVER AND A MINIMUM OF  
 6" OF VERTICAL SEPARATION.

|                        |           |
|------------------------|-----------|
| DESIGNED: A. MONACO    | REVISIONS |
| DRAWN: A. MONACO       | NO: --    |
| CHECKED: C. CERKLEWSKI | BY: --    |
| DATE: 2/3/2022         | DATE: --  |
|                        | NO: --    |
|                        | BY: --    |
|                        | DATE: --  |

**PUBLIC WORKS DEPARTMENT**  
**ENGINEERING SERVICES**

**WL-22-05, EAGLE VIEW & WISHRAM DRIVE WATER LINE**  
**EAGLE VIEW**

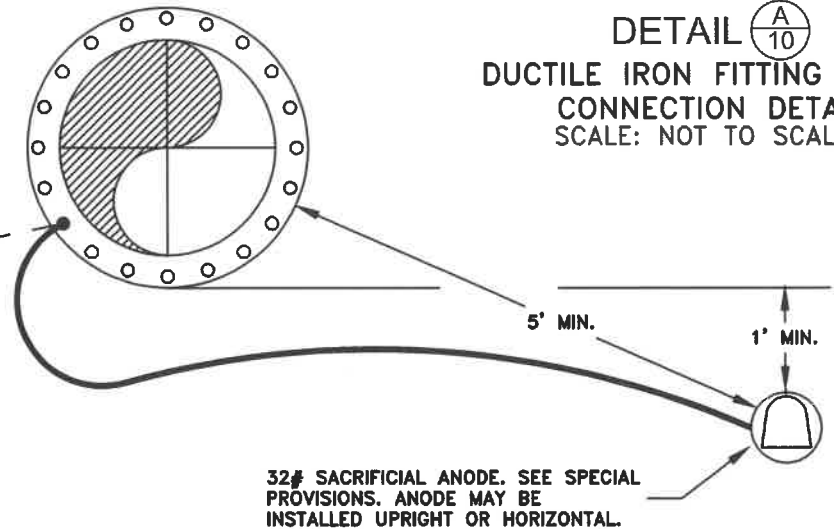
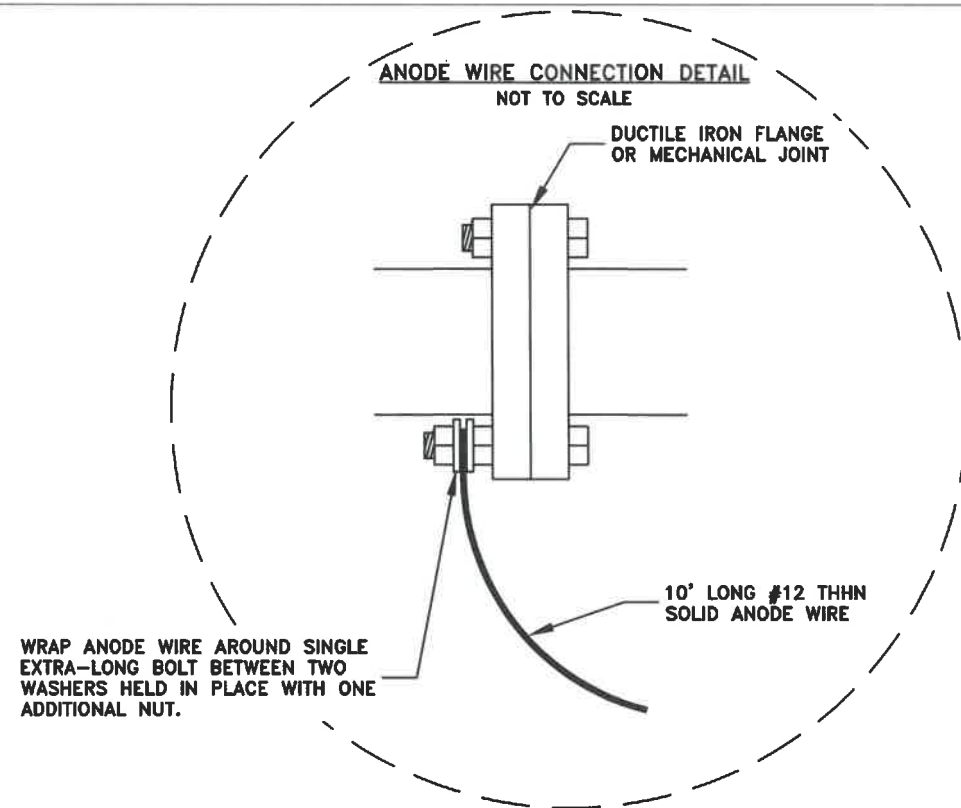


EXPIRATION DATE: 12/31/2023

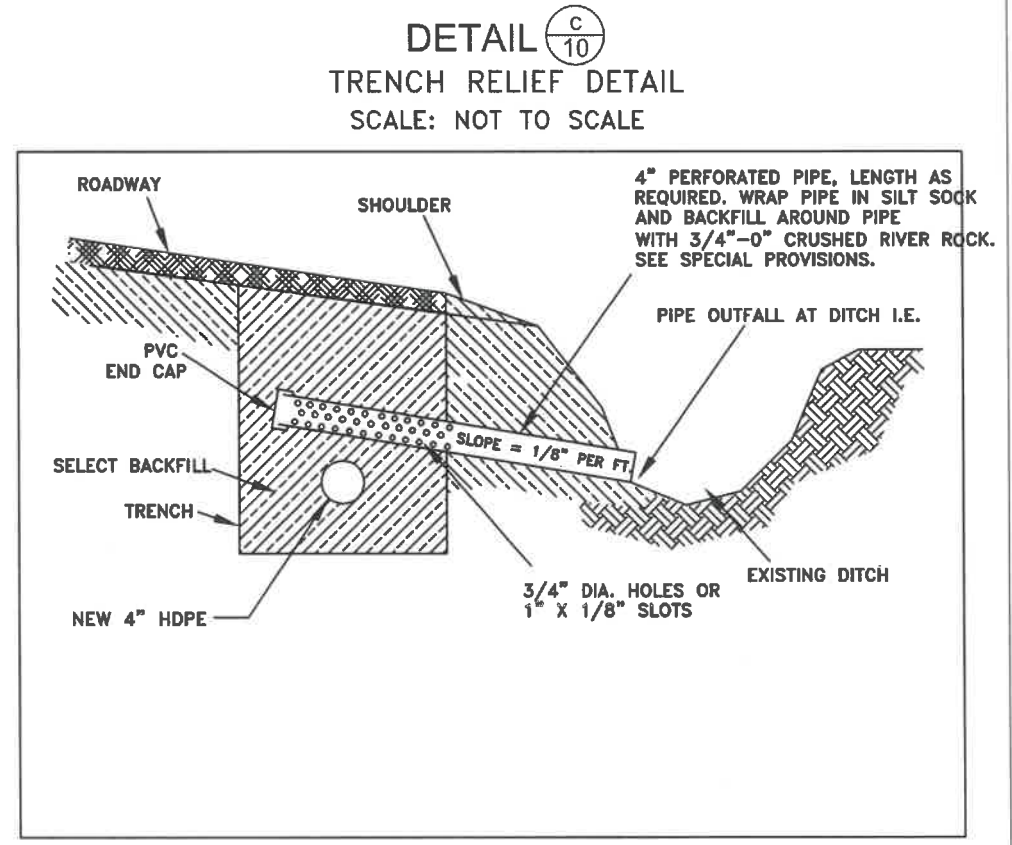
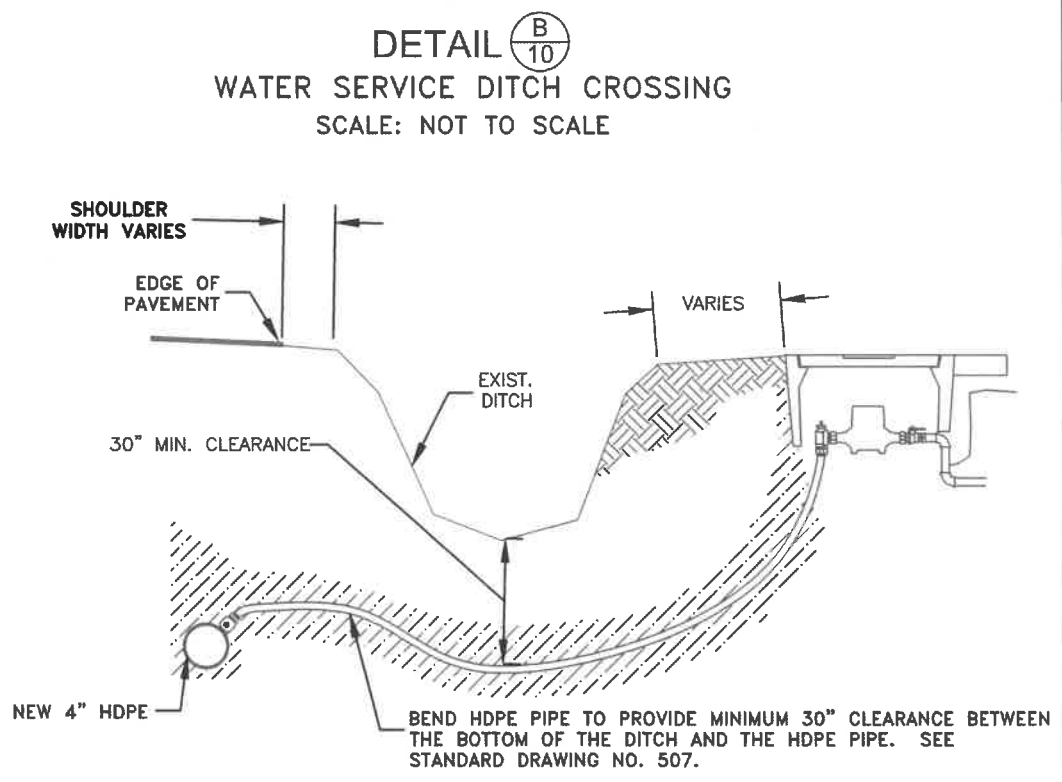
SHEET NO. 9 OF 14

PROJECT NO: WL-22-05

FILE: EAGLE.DWG



- NOTES:**
1. LOCATE SACRIFICIAL ANODES A MINIMUM OF 5 FEET FROM PIPE AND OTHER ANODES
  2. PLACE ANODE IN CLEAN NATIVE BACKFILL AND COMPACT TO ONE FOOT ABOVE ANODE. FILL REMAINDER OF EXCAVATION WITH SELECT BACKFILL.



DESIGNED: A. MONACO  
 DRAWN: A. MONACO  
 CHECKED: C. CERKLEWSKI  
 DATE: 2/3/2022

| REVISIONS |     |
|-----------|-----|
| NO.       | BY: |
|           |     |
|           |     |
|           |     |
|           |     |
|           |     |

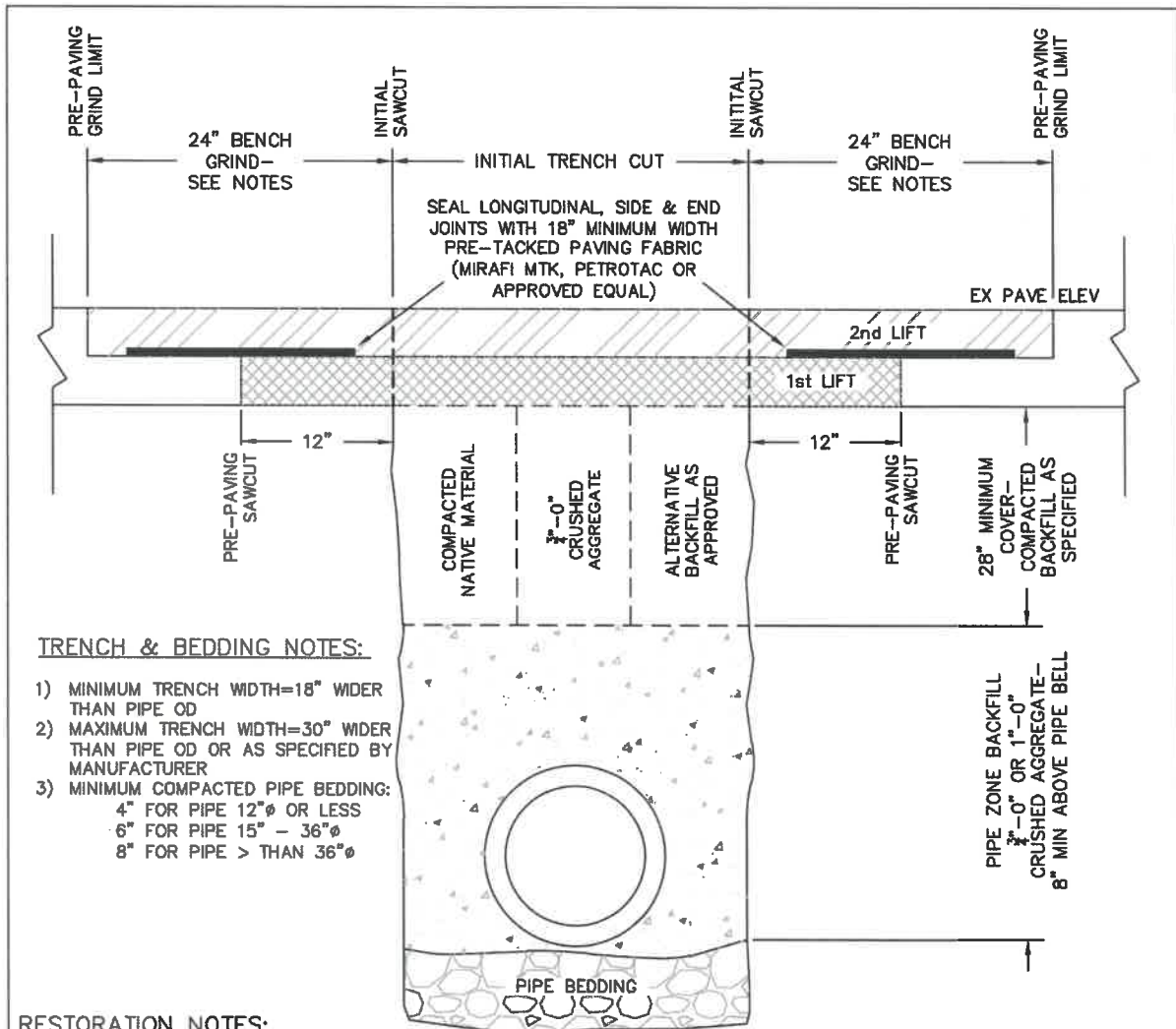
**PUBLIC WORKS DEPARTMENT  
 ENGINEERING SERVICES**

**WL-22-05, EAGLE VIEW & WISHRAM DRIVE WATER LINE  
 DETAILS**

REGISTERED PROFESSIONAL ENGINEER  
 56,471PE  
 CHRISTOPHER L. CERKLEWSKI  
 OREGON  
 JULY 9, 2002  
 EXPIRATION DATE: 12/31/2023

SHEET NO. 10 OF 14  
 PROJECT NO: WL-22-05  
 FILE: EAGLE.DWG





**TRENCH & BEDDING NOTES:**

- 1) MINIMUM TRENCH WIDTH=18" WIDER THAN PIPE OD
- 2) MAXIMUM TRENCH WIDTH=30" WIDER THAN PIPE OD OR AS SPECIFIED BY MANUFACTURER
- 3) MINIMUM COMPACTED PIPE BEDDING:  
 4" FOR PIPE 12"Ø OR LESS  
 6" FOR PIPE 15" - 36"Ø  
 8" FOR PIPE > THAN 36"Ø

**RESTORATION NOTES:**

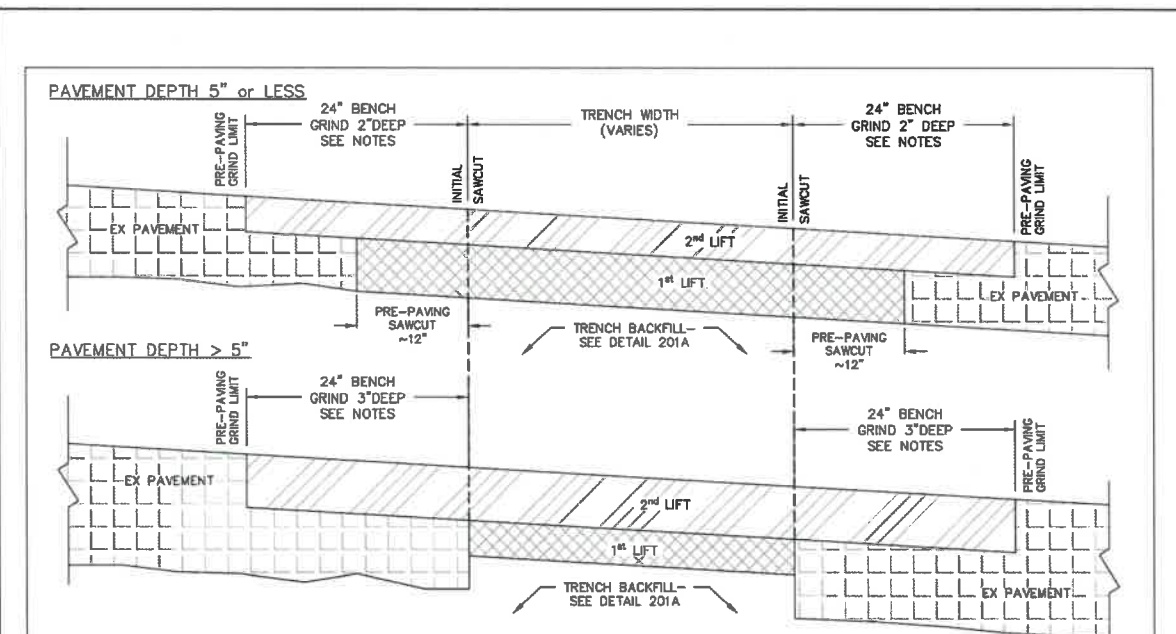
- 1) FOR EXISTING PAVEMENT DEPTH 5" OR LESS: UPON COMPLETION OF BACKFILL AND COMPACTION, GRIND 24"W x 2"D BENCH IN EXISTING PAVEMENT MEASURED FROM TRENCH CUT EDGES - AFTER GRINDING, SAWCUT 12" FROM INITIAL TRENCH CUT EDGES AND REMOVE 3" DEPTH OF EXISTING PAVEMENT/AGGREGATE - PAVEMENT RESTORATION SHALL CONSIST OF A MINIMUM OF 5" OF LEVEL II ½" HMAC IN 2 LIFTS: 1<sup>st</sup> LIFT=3" TO EDGE OF BENCH GRIND; 2<sup>nd</sup> LIFT=2" TO MATCH EXISTING SURFACE ELEVATION
- 2) FOR EXISTING PAVEMENT DEPTH GREATER THAN 5": UPON COMPLETION OF BACKFILL AND COMPACTION, GRIND A SINGLE 24"W x 3"D BENCH IN EXISTING AC MEASURED FROM TRENCH CUT EDGES - PAVEMENT RESTORATION SHALL CONSIST OF A MINIMUM OF 5" OF LEVEL II ½" HMAC IN 2 LIFTS: 1<sup>st</sup> LIFT=2" TO EDGE OF BENCH GRIND; 2<sup>nd</sup> LIFT=3" TO MATCH EXISTING SURFACE ELEVATION
- 3) SEAL LONGITUDINAL, SIDE & END JOINTS BETWEEN BENCH GRIND AND 1<sup>st</sup> LIFT MUST BE SEALED WITH 18" MINIMUM WIDTH PRE-TACKED PAVING FABRIC (MIRAFI MTK, PETROTAC OR ENGINEER APPROVED EQUAL)
- 4) ALL CUT/GROUND EDGES AND SURFACES OF EXISTING PAVEMENT STRUCTURE SHALL BE TACK COATED PRIOR TO PAVING - UPON COMPLETION OF PAVING, ALL JOINTS SHALL BE SAND SEALED
- 5) PAVING & AGGREGATE MATERIALS, COMPACTION AND TESTING SHALL CONFORM TO ODOT/APWA OREGON STANDARD SPECIFICATIONS FOR CONSTRUCTION MOST RECENT EDITION
- 6) TRENCHES IN PAVED TRAFFIC AREAS SHALL BE STEEL PLATED WITH COLD PATCHED EDGES OR COMPLETELY COLD PATCHED AT THE END OF EACH WORK DAY. CONTRACTOR IS RESPONSIBLE FOR MAINTENANCE OF PLATES AS NEEDED OR DIRECTED.

BENTON COUNTY  
ENGINEERING DIVISION

**TRENCH & PAVEMENT RESTORATION DETAIL FOR ROAD CROSSINGS**

DATE: MAY, 2020 SCALE: NONE STANDARD DETAIL No. 201A-BCPW  
 APPROVED: LEB

G:\work\proj\mgmt\AutoCAD SUPPORT-STDS-DETAILS\201A-BCPW-TRENCH & PAVE REST DETAIL



**RESTORATION NOTES:**

- 1) FOR EXISTING PAVEMENT DEPTH 5" OR LESS: UPON COMPLETION OF BACKFILL AND COMPACTION, GRIND 24"W x 2"D BENCH IN EXISTING PAVEMENT MEASURED FROM TRENCH CUT EDGES - AFTER GRINDING, SAWCUT 12" FROM INITIAL TRENCH CUT EDGES AND REMOVE 3" DEPTH OF EXISTING PAVEMENT/AGGREGATE - PAVEMENT RESTORATION SHALL CONSIST OF A MINIMUM OF 5" OF LEVEL II ½" HMAC IN 2 LIFTS: 1<sup>st</sup> LIFT=3" TO EDGE OF BENCH GRIND; 2<sup>nd</sup> LIFT=2" TO MATCH EXISTING SURFACE ELEVATION
- 2) FOR EXISTING PAVEMENT DEPTH GREATER THAN 5": UPON COMPLETION OF BACKFILL AND COMPACTION, GRIND A SINGLE 24"W x 3"D BENCH IN EXISTING AC MEASURED FROM TRENCH CUT EDGES - PAVEMENT RESTORATION SHALL CONSIST OF A MINIMUM OF 5" OF LEVEL II ½" HMAC IN 2 LIFTS: 1<sup>st</sup> LIFT=2" TO EDGE OF BENCH GRIND; 2<sup>nd</sup> LIFT=3" TO MATCH EXISTING SURFACE ELEVATION
- 3) ALL CUT/GROUND EDGES AND SURFACES OF EXISTING PAVEMENT STRUCTURE SHALL BE TACK COATED PRIOR TO PAVING
- 4) UPON COMPLETION OF PAVING, ALL JOINTS SHALL BE SAND SEALED
- 5) PAVING & AGGREGATE MATERIALS, COMPACTION AND TESTING SHALL CONFORM TO ODOT/APWA OREGON STANDARD SPECIFICATIONS FOR CONSTRUCTION MOST RECENT EDITION
- 6) TRENCHES IN PAVED TRAFFIC AREAS SHALL BE STEEL PLATED WITH COLD PATCHED EDGES OR COMPLETELY COLD PATCHED AT THE END OF EACH WORK DAY. CONTRACTOR IS RESPONSIBLE FOR MAINTENANCE OF PLATES AS NEEDED OR DIRECTED.

BENTON COUNTY  
ENGINEERING DIVISION

**TRENCH & PAVEMENT RESTORATION DETAIL- LONGITUDINAL**

DATE: MAY, 2020 SCALE: NONE STANDARD DETAIL No. 201B-BCPW  
 APPROVED: LEB

G:\work\proj\mgmt\AutoCAD SUPPORT-STDS-DETAILS\201B-BCPW-ROAD RESTORING LIFT JUNT DETAIL

|                        |           |
|------------------------|-----------|
| DESIGNED: A. MONACO    | REVISIONS |
| DRAWN: A. MONACO       | NO: --    |
| CHECKED: C. CERKLEWSKI | BY: --    |
| DATE: 2/3/2022         | NO: --    |
|                        | DATE: --  |
|                        | NO: --    |
|                        | BY: --    |

**PUBLIC WORKS DEPARTMENT  
ENGINEERING SERVICES**



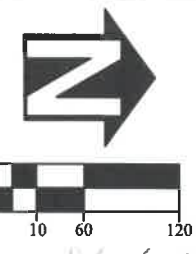
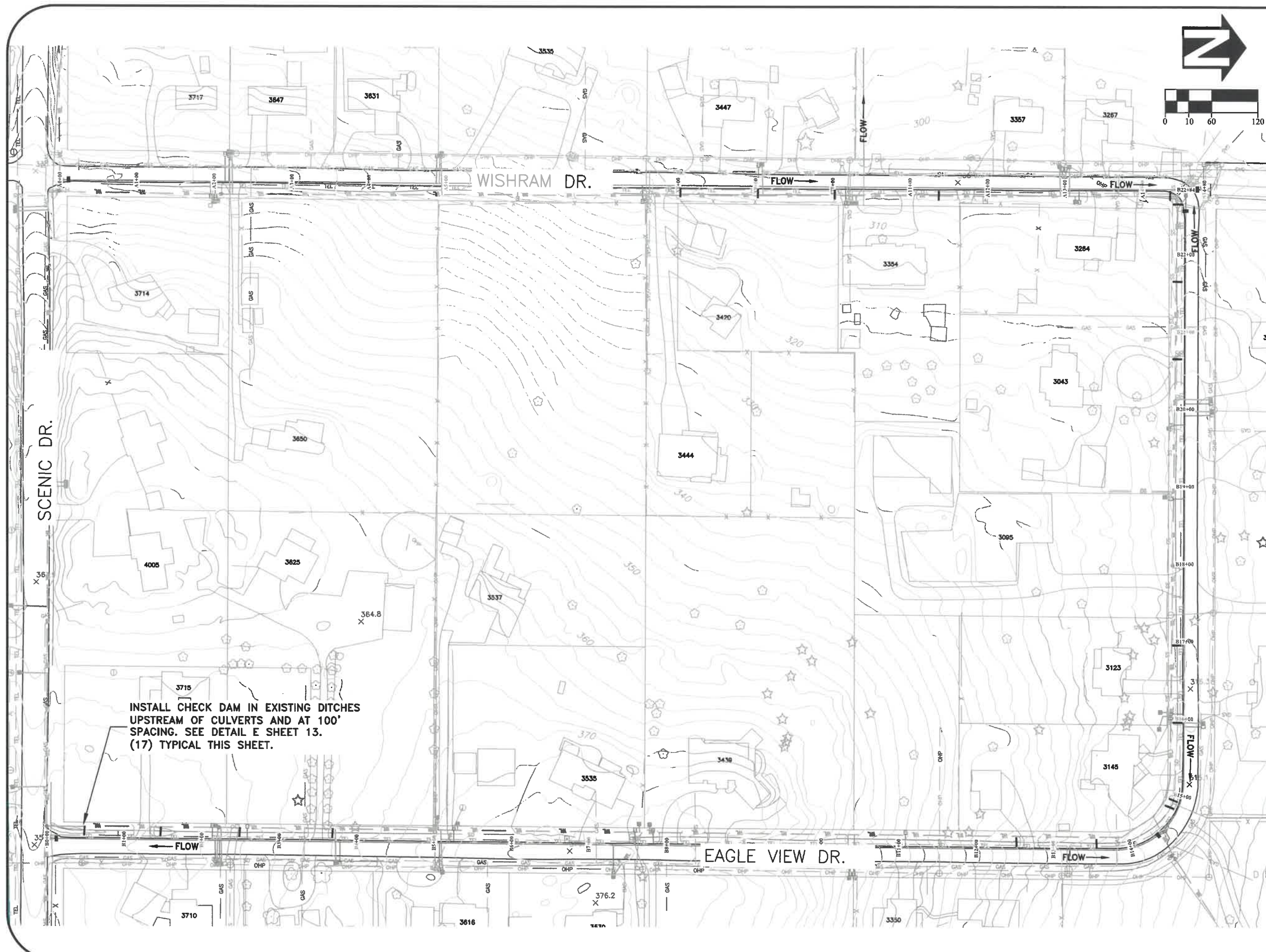
EXPIRATION DATE: 12/31/2023

SHEET NO. 11 OF 14  
 PROJECT NO: WL-22-05  
 FILE: EAGLE.DWG

**WL-22-05, EAGLE VIEW & WISHRAM DRIVE WATER LINE  
DETAILS 2**








DESIGNED: A. MONACO  
 DRAWN: A. MONACO  
 CHECKED: C. CERKLEWSKI  
 DATE: 2/3/2022

| NO. | DATE | REVISIONS | BY: |
|-----|------|-----------|-----|
|     |      |           |     |
|     |      |           |     |
|     |      |           |     |
|     |      |           |     |

**PUBLIC WORKS DEPARTMENT**  
**ENGINEERING SERVICES**



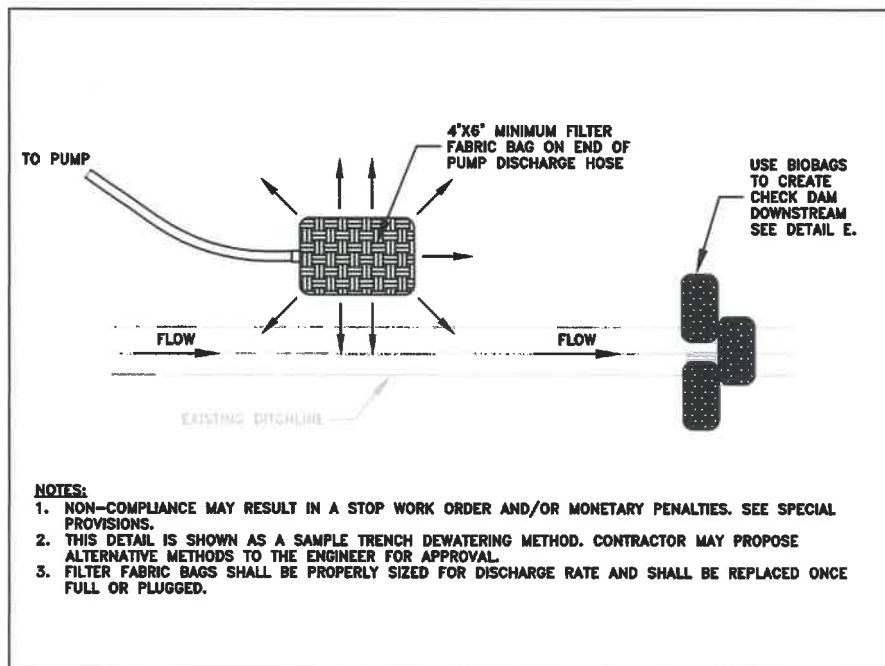
**WL-22-05, EAGLE VIEW & WISHRAM DRIVE WATER LINE**  
**EPSC PLAN**

REGISTERED PROFESSIONAL  
 ENGINEER  
 56,471PE  
*Christopher L. Chelmer*  
 OREGON  
 JULY 9, 2002  
 CHRISTOPHER L. CERKLEWSKI

EXPIRATION DATE: 12/31/2023

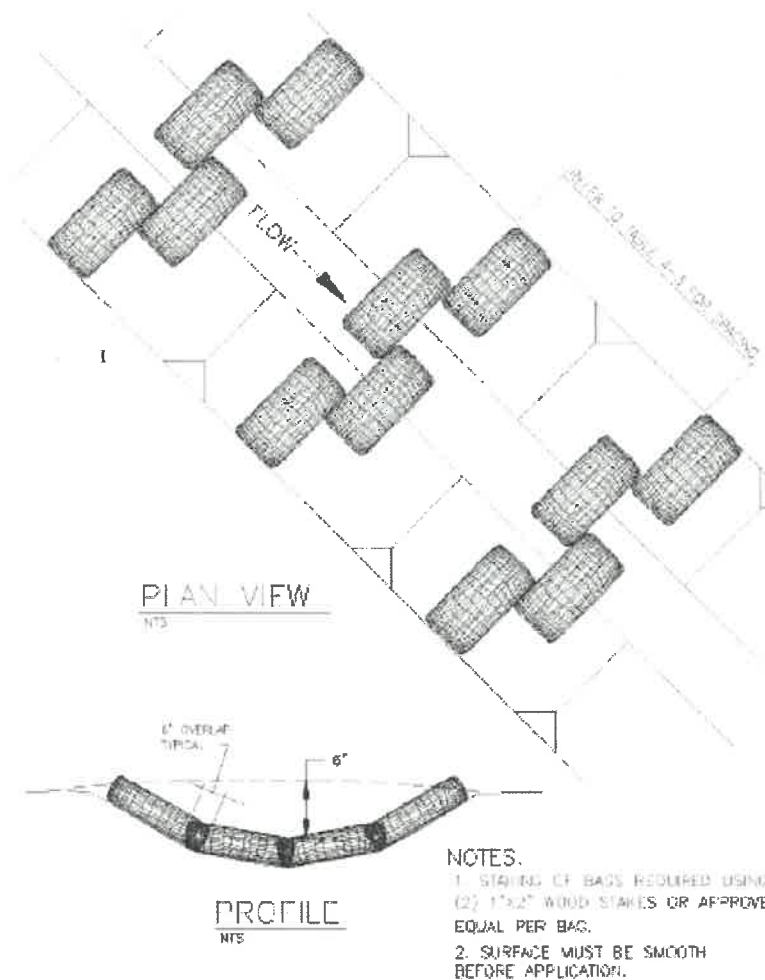
SHEET NO. 13 OF 14  
 PROJECT NO: WL-22-05  
 FILE: EAGLE.DWG

DETAIL D  
13  
**SAMPLE TRENCH  
 DEWATERING METHOD**  
 SCALE: NOT TO SCALE




Chapter 4

DETAIL E  
13  
 Diagram 4.2.6b  
**CHECK DAM - BIO FILTER BAG**  
 SCALE: NOT TO SCALE



|                       |           |
|-----------------------|-----------|
| DESIGNED: A. MONACO   | REVISIONS |
| DRAWN: A. MONACO      | NO: ---   |
| CHECKED: C.CERKLEWSKI | BY: ---   |
| DATE: 2/3/2022        | ---       |

**PUBLIC WORKS DEPARTMENT  
 ENGINEERING SERVICES**



**WL-22-05, EAGLE VIEW & WISHRAM DRIVE WATER LINE  
 EPSC DETAILS**

**REGISTERED PROFESSIONAL  
 ENGINEER  
 56,471PE**

*Christopher L. Cerkowski*

**OREGON  
 JULY 9, 2002  
 CHRISTOPHER L. CERKLEWSKI**

EXPIRATION DATE: 12/31/2023

SHEET NO. 14 OF 14  
 PROJECT NO: WL-22-05  
 FILE: EAGLE.DWG