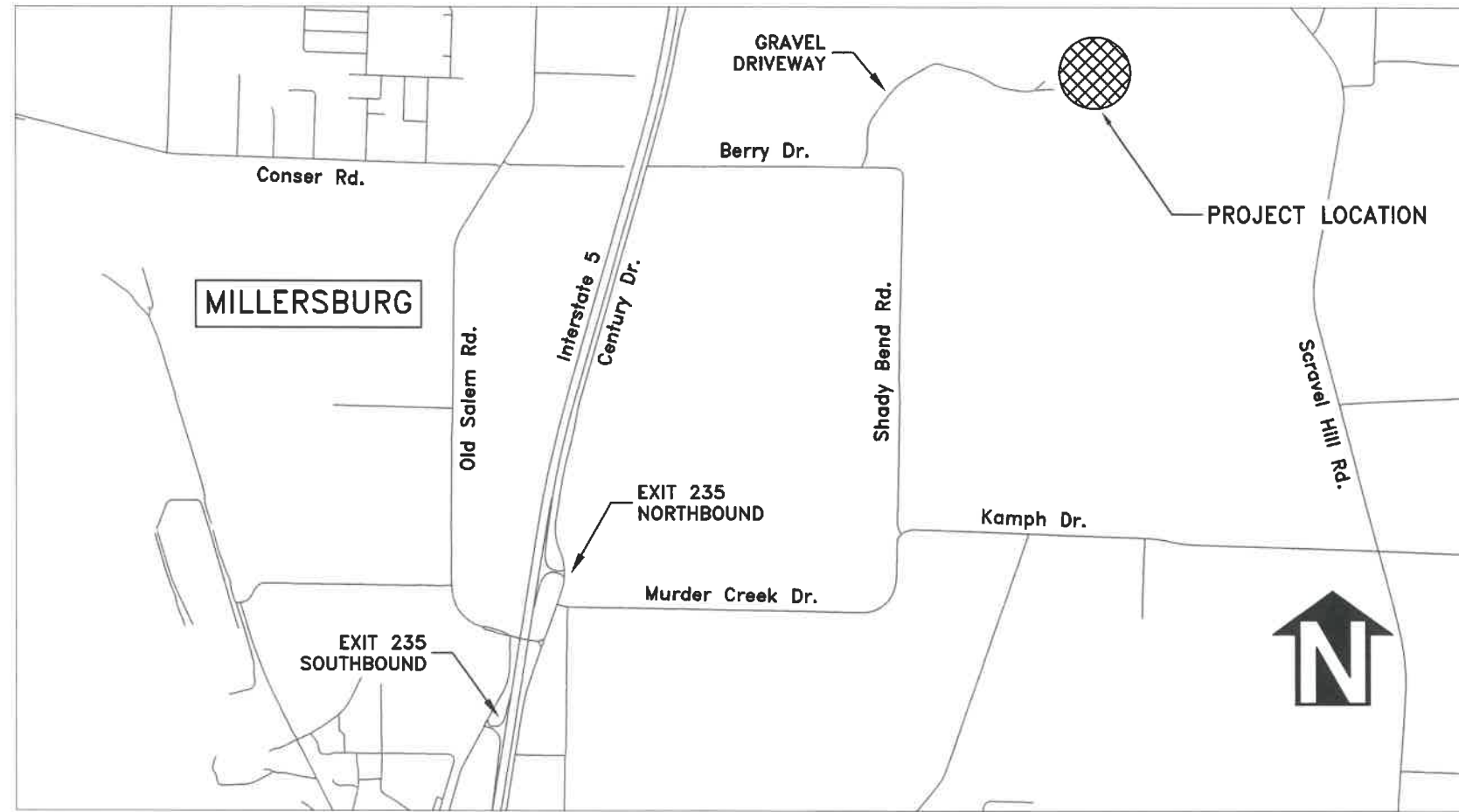


CITY OF ALBANY

WTP-22-02, ALBANY-MILLERSBURG WATER TREATMENT PLANT SEISMIC VALVE

SHEET INDEX

- SHEET NO. 1, COVER & GENERAL NOTES
- SHEET NO. 2, WATER TREATMENT PLANT LAYOUT
- SHEET NO. 3, 42-INCH BUTTERFLY VALVE REPLACEMENT



Vicinity Map
Not to Scale

GENERAL NOTES

1. ALL CONSTRUCTION SHALL CONFORM TO THE CITY OF ALBANY STANDARD CONSTRUCTION SPECIFICATIONS AND ASSOCIATED STANDARD DRAWINGS. THE CURRENT VERSION OF THE CITY OF ALBANY STANDARD CONSTRUCTION SPECIFICATIONS CAN BE FOUND ON THE CITY'S WEBSITE AT WWW.CITYOFALBANY.NET.
2. UTILITIES SHOWN ARE FOR REFERENCE ONLY. FOR A FIELD LOCATE, CALL THE UTILITIES NOTIFICATIONS CENTER AT 1-800-332-2344.
3. OPERATING ACCESS FOR CITY MAINTENANCE PERSONNEL TO EXISTING AND NEW WATER VALVES AND MANHOLES SHALL BE CONTINUOUSLY MAINTAINED BY THE CONTRACTOR DURING ALL CONSTRUCTION ACTIVITIES.
4. CONTRACTOR SHALL VERIFY ALL EXISTING PIPE ELEVATIONS, PIPE DIAMETERS, AND PIPE MATERIALS AT CONNECTION AND ABANDONMENT LOCATIONS PRIOR TO CONSTRUCTION. ANY DISCREPANCIES SHALL BE REPORTED TO ENGINEER PRIOR TO BEGINNING WORK.
5. ATTENTION: OREGON LAW REQUIRES YOU TO FOLLOW RULES ADOPTED BY THE OREGON UTILITY NOTIFICATION CENTER. THOSE RULES ARE SET FORTH IN OAR 952-001-0010 THROUGH OAR 952-001-0090. YOU MAY OBTAIN COPIES OF THE RULES BY CALLING THE CENTER. (NOTE: THE TELEPHONE NUMBER FOR THE OREGON UTILITY NOTIFICATION CENTER IS (503) 232-1987).
6. CONTRACTOR SHALL BE RESPONSIBLE FOR PROPER INSTALLATION AND MAINTENANCE OF ALL EROSION PREVENTION SEDIMENT CONTROL (EPSC) MEASURES IN ACCORDANCE WITH LOCAL, STATE, AND FEDERAL REGULATIONS UNTIL ALL CONSTRUCTION IS COMPLETED AND APPROVED BY THE CITY OF ALBANY, AND VEGETATION/LANDSCAPING IS ESTABLISHED. FOR GUIDANCE, REFER TO THE CITY OF ALBANY EPSC MANUAL WHICH CAN BE FOUND AT www.cityofalbany.net.

DESIGNED: C. CERKLEWSKI
 DRAWN: C. CERKLEWSKI
 CHECKED: S. BELCASTRO
 DATE: 9/12/2022

REVISIONS	
NO.	BY:

PUBLIC WORKS DEPARTMENT
 ENGINEERING SERVICES



WTP-22-02, ALBANY-MILLERSBURG WATER TREATMENT PLANT SEISMIC VALVE

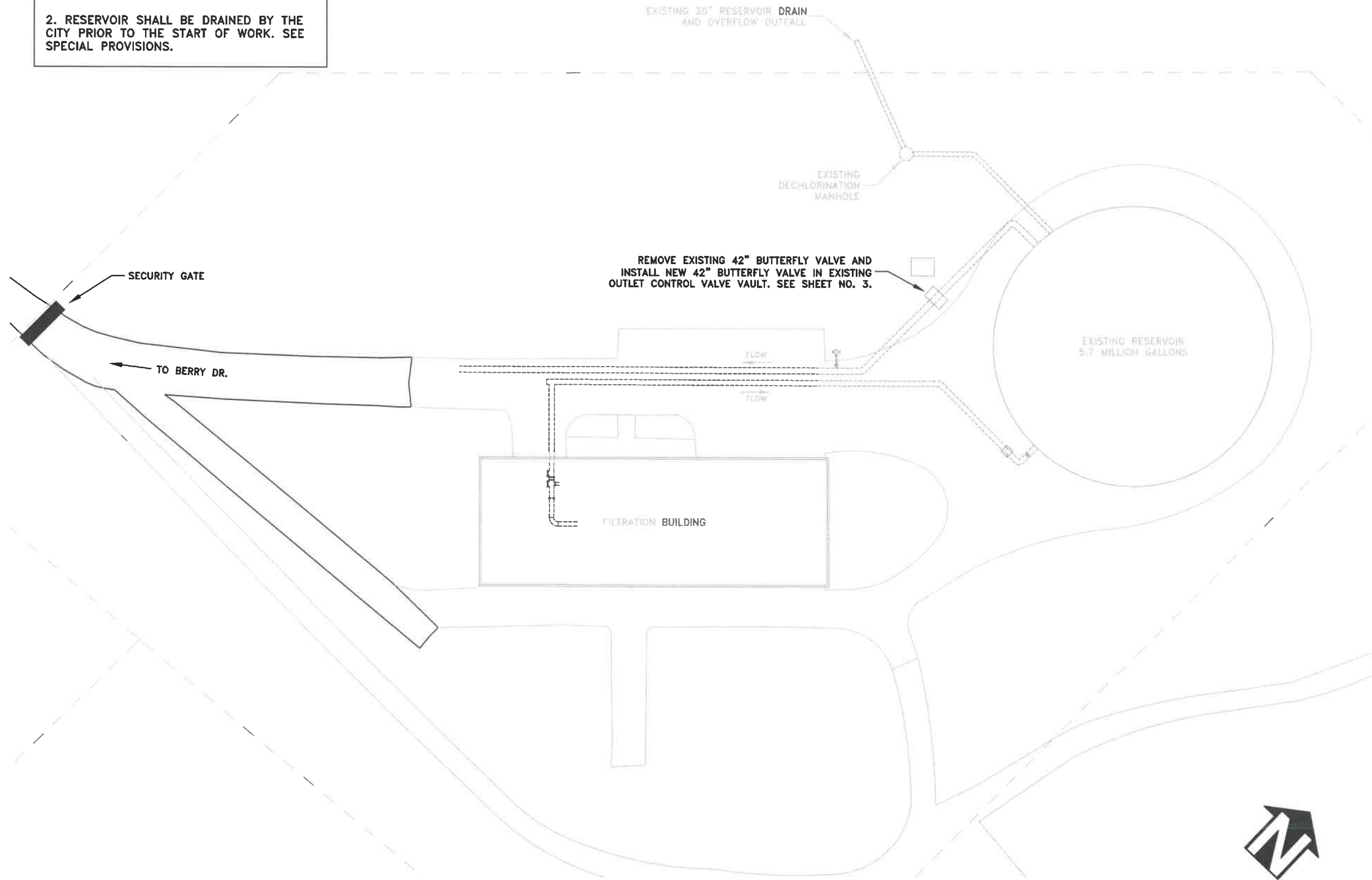


EXPIRATION DATE: 12/31/2023

SHEET NO. 1 OF 3
 PROJECT NO: WTP-22-02
 FILE: COVER.DWG

NOTES:

1. THIS PROJECT IS LOCATED WITHIN A SECURE FACILITY. COORDINATE WITH THE ENGINEER FOR ACCESS REQUIREMENTS.
2. RESERVOIR SHALL BE DRAINED BY THE CITY PRIOR TO THE START OF WORK. SEE SPECIAL PROVISIONS.



DESIGNED: C. CERKLEWSKI
DRAWN: C. CERKLEWSKI
CHECKED: S. BELCASTRO
DATE: 9/12/2022

REVISIONS	
NO.	BY:

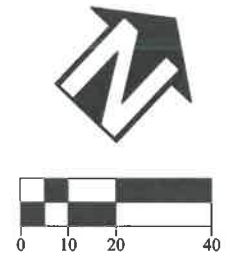
**PUBLIC WORKS DEPARTMENT
ENGINEERING SERVICES**



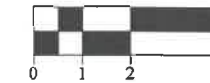
**WTP-22-02, ALBANY-MILLERSBURG WATER TREATMENT PLANT SEISMIC VALVE
WATER TREATMENT PLANT LAYOUT**



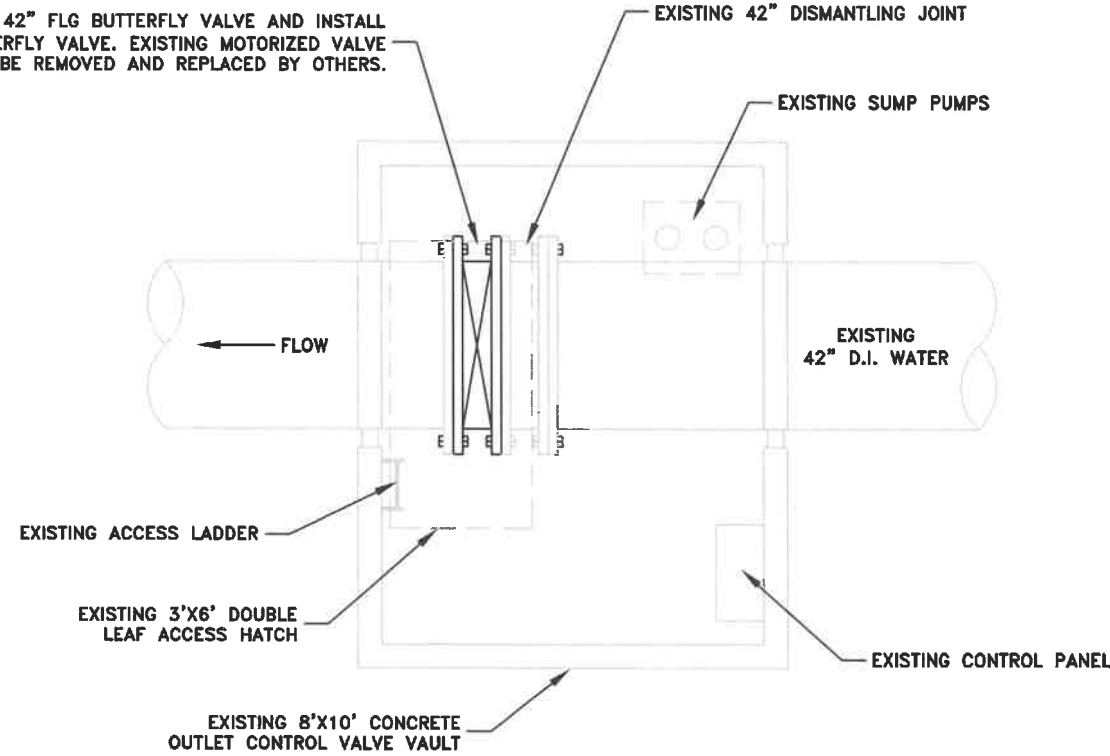
EXPIRATION DATE: 12/31/2023
SHEET NO. 2 OF 3
PROJECT NO: WTP-22-02
FILE: BASE.DWG



42" BUTTERFLY VALVE REPLACEMENT PLAN VIEW



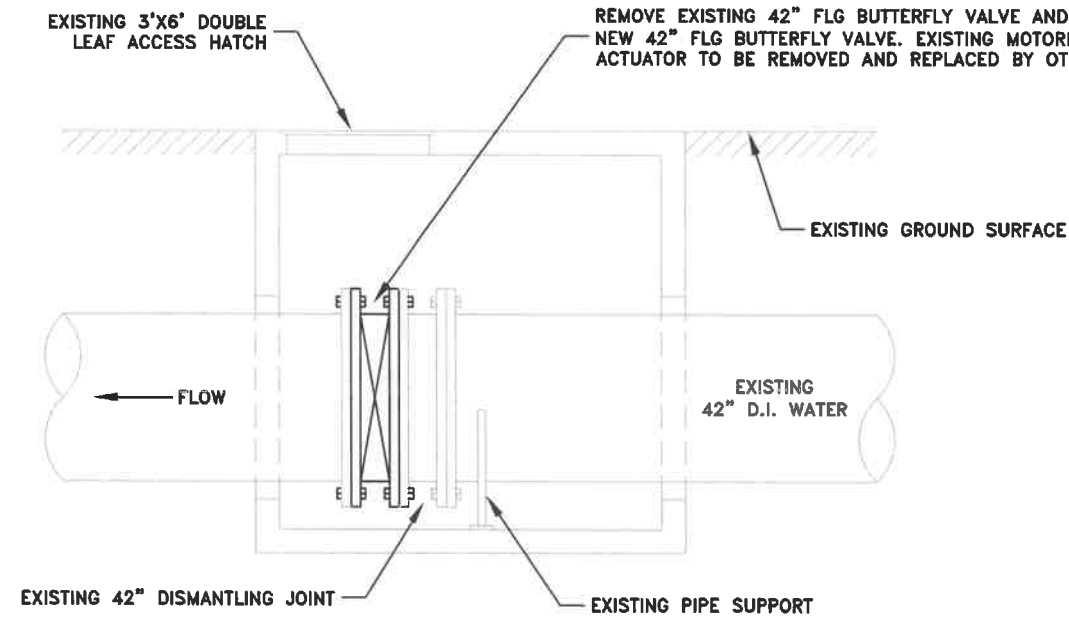
REMOVE EXISTING 42" FLG BUTTERFLY VALVE AND INSTALL NEW 42" FLG BUTTERFLY VALVE. EXISTING MOTORIZED VALVE ACTUATOR TO BE REMOVED AND REPLACED BY OTHERS.



42" BUTTERFLY VALVE REPLACEMENT PROFILE VIEW



REMOVE EXISTING 42" FLG BUTTERFLY VALVE AND INSTALL NEW 42" FLG BUTTERFLY VALVE. EXISTING MOTORIZED VALVE ACTUATOR TO BE REMOVED AND REPLACED BY OTHERS.




NOTES:


1. DISINFECT ALL COMPONENTS PRIOR TO INSTALLATION PER THE STANDARD CONSTRUCTION SPECIFICATIONS
2. REPLACE EXISTING GASKETS AND EXISTING BOLTS ON BOTH FLANGES OF 42" BUTTERFLY VALVE WITH NEW BOLTS AND GASKETS. SEE SPECIAL PROVISIONS.

DESIGNED: C. CERKLEWSKI	REVISIONS	NO:	BY:
DRAWN: C. CERKLEWSKI			
CHECKED: S. BELCASTRO			
DATE: 9/12/2022			

**PUBLIC WORKS DEPARTMENT
ENGINEERING SERVICES**



**WTP-22-02, ALBANY-MILLERSBURG WATER TREATMENT PLANT SEISMIC VALVE
42-INCH BUTTERFLY VALVE REPLACEMENT**



EXPIRATION DATE: 12/31/2023

SHEET NO. 3 OF 3

PROJECT NO: WTP-22-02

FILE: BASE.DWG