



CITY OF ALBANY
Public Works Department

ADDENDUM #1

ST-22-01, Queen Avenue Rehabilitation: City Limits to Pacific Blvd.

DATE: JANUARY 24, 2023

In order to clarify the intent of the Specifications and Drawings, the following provisions are provided and shall be considered part of the contract documents.

SCHEDULE OF CONTRACT PRICES

Replace the existing Schedule of Contract Prices with the attached new Schedule of Contract Prices. The new schedule has the following changes:

- Item No. A-22 – 16-Inch PVC Storm Drain: Change bid item to “15-Inch PVC Storm Drain”
- Item No. A-74 – Grind Existing Sidewalk: New bid item

II-1. PREVAILING WAGES

Replace the sixth paragraph with the following new text:

The publication that applies to this contract is the January 5, 2023, Prevailing Wage Rates for Public Works Contracts in Oregon. Daily/weekly/holiday/weekend overtime must be paid.

BID ITEMS

Bid Item No. A-20 to A-24 – 8-Inch, 10-Inch, 16-Inch, 18-Inch and 24-Inch PVC Storm Drain:

Change “16-Inch” to “15-Inch”

Bid Item No. A-25 to A-28 – 8-Inch, 10-Inch, 16-Inch and 18-Inch D.I. Storm Drain

Add the following text:

Ductile iron pipe used for storm drains shall use non-restrained push-on joints. Locking gaskets and/or axial-lock pipe are not required. Polyethene encasement is not required on ductile iron storm drains.

Bid Item No. A-39 – Shallow Precast Manhole:

Add the following text:

Connections to existing concrete storm drains shall be made using short segments of reinforced concrete pipe of the same inside diameter and flexible transition couplers unless shown otherwise on the Construction Drawings or directed by Engineer. Connections to existing pipes shall be incidental to this item.

Bid Item No. A-41 – Standard Precast Manhole:

Add the following text:

Connections to existing concrete storm drains shall be made using short segments of reinforced concrete pipe of the same inside diameter and flexible transition couplers unless shown otherwise on the Construction Drawings or directed by Engineer. Connections to existing pipes shall be incidental to this item.

Bid Item No. A-42 – 60-Inch Precast Manhole:

Add the following text:

Connections to existing concrete storm drains shall be made using short segments of reinforced concrete pipe of the same inside diameter and flexible transition couplers unless shown otherwise on the Construction Drawings or directed by Engineer. Connections to existing pipes shall be incidental to this item.

Bid Item No. A-48 – Catch Basin:

Add the following text:

Connections to existing concrete storm drains shall be made using short segments of reinforced concrete pipe of the same inside diameter and flexible transition couplers unless shown otherwise on the Construction Drawings or directed by Engineer. Connections to existing pipes shall be incidental to this item.

Add the following new bid item to the end of Schedule A:

Item No. A-74 – Grind Existing Sidewalk:

This item provides for micro-grinding transverse vertical edges greater than ¼-inch on existing sidewalks as shown on the Construction Drawings and as directed by the Engineer. Edges shall be beveled smooth with a maximum running slope of 2H:1V.

Payment for this bid item will be on a per-each basis and will include all labor, equipment, materials, and incidentals required to complete the work.

APPENDIX C: ODOT PERMIT (Highway 99E)

Replace the existing Appendix C with the new attached Appendix C.

APPENDIX D: LINN COUNTY PERMIT

Replace the existing Appendix D with the new attached Appendix D.

CONSTRUCTION DRAWINGS

Replace the following sheets with the new attached sheets as described below:

- Sheet No. 8: Updates pipe diameters for catch basin runs
- Sheet No. 9: Updates pipe between SDMH-26 and SDCB-35 is 10-inch ductile iron
- Sheet No. 40: Changes the two 4"x4" Connection Assemblies to be 8"x4" Connection Assemblies

- Sheet No. 44: Added information regarding existing concrete panels on Pacific Boulevard and associated notes
- Sheet No. 53: On Detail E, changed 16-inch gate valve to 16-inch butterfly valve

In order to ensure that all bidders are aware of these provisions, each bidder must sign this addendum below and attach it to the proposal.

IMPORTANT: Failure to include a signed Addendum could result in the disqualification of your bid.

Contractor's Signature

Date

Company Name *(please type or print)*

SCHEDULE OF CONTRACT PRICES

ITEM NO.	BID ITEMS	APPROX. QUANTITY	UNIT OF MEASURE	UNIT PRICE DOLLARS/CTS	TOTAL AMT. DOLLARS/CTS
SCHEDULE A					
A-1	Mobilization	1	Lump Sum		
A-2	Temporary Traffic Control	1	Lump Sum		
A-3	Erosion Prevention and Sediment Control	1	Lump Sum		
A-4	Unclassified Excavation	2800	Cubic Yard		
A-5	Overexcavation and Foundation Stabilization	2200	Cubic Yard		
A-6	2-Inch Cold Plane Pavement Removal	15700	Square Yard		
A-7	Fine Grade Existing Aggregate Base	10700	Square Yard		
A-8	Emulsified Asphalt Tack Coat	37000	Square Yard		
A-9	3/8-Inch Warm-Mix Asphalt Concrete	3000	Ton		
A-10	1/2-Inch Warm-Mix Asphalt Concrete	4250	Ton		
A-11	Side Street Paving	17	Each		
A-12	Asphalt Trench Patch	1000	Ton		
A-13	Construct PCC Valley Gutter	1	Lump Sum		
A-14	Remove and Replace Standard Curb and Gutter	2200	Linear Foot		
A-15	Remove and Replace Straight Curb	130	Linear Foot		
A-16	Remove and Replace 4-Inch PCC Sidewalk	1650	Square Yard		
A-17	Remove and Replace 6-Inch PCC Driveway Approach	80	Square Yard		
A-18	Remove and Replace 8-Inch PCC Driveway Approach	200	Square Yard		
A-19	Detectable Warning Surface	648	Square Foot		
A-20	8-Inch PVC Storm Drain	25	Linear Foot		
A-21	10-Inch PVC Storm Drain	970	Linear Foot		
A-22	15-Inch PVC Storm Drain	130	Linear Foot		
A-23	18-Inch PVC Storm Drain	25	Linear Foot		

ITEM NO.	BID ITEMS	APPROX. QUANTITY	UNIT OF MEASURE	UNIT PRICE DOLLARS/CTS	TOTAL AMT. DOLLARS/CTS
A-24	24-Inch PVC Storm Drain	290	Linear Foot		
A-25	8-Inch D.I.Storm Drain	130	Linear Foot		
A-26	10-Inch D.I.Storm Drain	390	Linear Foot		
A-27	16-Inch D.I.Storm Drain	260	Linear Foot		
A-28	18-Inch D.I.Storm Drain	55	Linear Foot		
A-29	15-Inch RCP Storm Drain	55	Linear Foot		
A-30	4-Inch Perforated PVC Storm Drain	70	Linear Foot		
A-31	6-Inch Perforated PVC Storm Drain	100	Linear Foot		
A-32	6-Inch PVC Storm Drain Service	5	Each		
A-33	Install Property Line Cleanout	8	Each		
A-34	Connect To Existing 6-Inch D.I.Storm Drain Service	1	Lump Sum		
A-35	Curb Drain	50	Linear Foot		
A-36	Adjust Manhole Rim to Grade	52	Each		
A-37	Adjust Water Fixtures to Grade	1	Lump Sum		
A-38	24-Inch Mini-Manhole	5	Each		
A-39	Shallow Precast Manhole	14	Each		
A-40	Shallow Cast-In-Place Base Manhole	5	Each		
A-41	Standard Precast Manhole	3	Each		
A-42	60-Inch Precast Manhole	1	Each		
A-43	60-Inch Cast-In-Place Base Manhole	3	Each		
A-44	72-Inch Hydrodynamic Separator	1	Lump Sum		
A-45	Connect to Existing Manhole	1	Each		
A-46	Remove and Replace Curb Inlet Top	2	Each		
A-47	Standard Curb Inlet	13	Each		
A-48	Catch Basin	45	Each		

ITEM NO.	BID ITEMS	APPROX. QUANTITY	UNIT OF MEASURE	UNIT PRICE DOLLARS/CTS	TOTAL AMT. DOLLARS/CTS
A-49	Install Underground Utility Support	1	Each		
A-50	Remove Existing Storm Drain	625	Linear Foot		
A-51	Remove Existing Catch Basin	43	Each		
A-52	Remove Existing Manhole	7	Each		
A-53	Abandon Existing Storm Drain	955	Linear Foot		
A-54	Abandon 10-Inch Storm Drain Connection	2	Each		
A-55	Abandon Existing Manhole	1	Each		
A-56	4-Inch Yellow Non-Profiled Thermoplastic Stripe	12000	Linear Foot		
A-57	8-Inch White Non-Profiled Thermoplastic Stripe	12500	Linear Foot		
A-58	12-Inch White Non-Profiled Thermoplastic Stripe	1280	Linear Foot		
A-59	Thermoplastic Bicycle Lane Legend	36	Each		
A-60	Thermoplastic School Legend	3	Each		
A-61	Thermoplastic Single Arrow Legend	49	Each		
A-62	Thermoplastic Double Arrow Legend	4	Each		
A-63	Raised Reflectorized Pavement Marker	325	Each		
A-64	Painted Yellow Curb	45	Linear Foot		
A-65	Remove Existing Striping	1	Lump Sum		
A-66	Install New Street Signs	1	Lump Sum		
A-67	Relocate Existing Street Sign	14	Each		
A-68	Relocate Existing Cluster Mailbox Unit	1	Each		
A-69	Install RRFB Pedestrian Crossing at Broadway Street	1	Lump Sum		
A-70	Install RRFB Pedestrian Crossing at Umatilla Street	1	Lump Sum		
A-71	Modify and Restore Traffic Signal	1	Lump Sum		
A-72	General Landscape Restoration	1	Lump Sum		
A-73	Early Completion Bonus	30	Day	\$2,500	\$75,000

ITEM NO.	BID ITEMS	APPROX. QUANTITY	UNIT OF MEASURE	UNIT PRICE DOLLARS/CTS	TOTAL AMT. DOLLARS/CTS
A-74	Grind Existing Sidewalk	13	Each		
TOTAL SCHEDULE A					
SCHEDULE B					
B-1	Mobilization	1	Lump Sum		
B-2	Temporary Traffic Control	1	Lump Sum		
B-3	Erosion Prevention and Sediment Control	1	Lump Sum		
B-4	Jack-and-Bore 24-Inch Steel Casing with 12-Inch Ductile Iron Water Line	140	Linear Foot		
B-5	16-Inch Ductile Iron Water Line	60	Linear Foot		
B-6	12-Inch Ductile Iron Water Line	1420	Linear Foot		
B-7	8-Inch Ductile Iron Water Line	2050	Linear Foot		
B-8	16-Inch Butterfly Valve	2	Each		
B-9	12-Inch Butterfly Valve	11	Each		
B-10	10-Inch Butterfly Valve	1	Each		
B-11	8-Inch Gate Valve	13	Each		
B-12	6-Inch Gate Valve	11	Each		
B-13	4-Inch Gate Valve	3	Each		
B-14	1-Inch Combination Air/Vacuum Release Valve	2	Each		
B-15	Standard 1-Inch Service Assembly	35	Each		
B-16	Expose Existing 2-Inch Service	1	Lump Sum		
B-17	Standard Fire Hydrant Assembly	9	Each		
B-18	Remove Existing Fire Hydrant Assembly	4	Each		
B-19	Coordinate 10-Inch × 8-Inch Live Tap	1	Lump Sum		
B-20	Construct Concrete Thrust Block	8	Each		
B-21	16-Inch × 16-Inch Connection Assembly	2	Each		
B-22	12-Inch × 12-Inch × 8-Inch Connection Assembly	1	Lump Sum		

ITEM NO.	BID ITEMS	APPROX. QUANTITY	UNIT OF MEASURE	UNIT PRICE DOLLARS/CTS	TOTAL AMT. DOLLARS/CTS
B-23	12-Inch × 12-Inch Connection Assembly	3	Each		
B-24	12-Inch × 6-Inch Connection Assembly	1	Lump Sum		
B-25	12-Inch × 2-Inch Connection Assembly	1	Lump Sum		
B-26	8-Inch × 8-Inch Connection Assembly	4	Each		
B-27	8-Inch × 4-Inch Connection Assembly	2	Each		
B-28	2-Inch x 1-1/2-Inch Connection Assembly	1	Lump Sum		
B-29	Cut-In 24-Inch x 8-Inch Cross	1	Lump Sum		
B-30	Cut-In 12-Inch x 12-Inch Tee	1	Lump Sum		
B-31	Cut-In 12-Inch x 8-Inch Cross	1	Lump Sum		
B-32	Cut-In 10-Inch x 10-Inch Tee	1	Lump Sum		
B-33	Cut-In 8-Inch x 6-Inch Tee	1	Lump Sum		
B-34	Install 32# Sacrificial Anode	29	Each		
B-35	Install 17# Sacrificial Anode on Existing Service	27	Each		
B-36	Install Underground Utility Support	4	Each		
B-37	Asphalt Trench Patch	1000	Ton		
B-38	Remove and Replace Standard Curb and Gutter	400	Linear Foot		
B-39	Remove and Replace 4-Inch PCC Sidewalk	400	Square Yard		
B-40	Remove and Replace 8-Inch PCC Driveway Approach	50	Square Yard		
B-41	Abandon 24-Inch x 12-Inch Connection	2	Each		
B-42	Abandon 12-Inch x 10-Inch Connection	1	Lump Sum		
B-43	Abandon 10-Inch x 6-Inch Connection	1	Lump Sum		
B-44	Abandon Existing 1-Inch Water Service	1	Lump Sum		
B-45	Abandon Existing Water Lines	3800	Linear Foot		
B-46	Remove and Dispose of Asbestos Cement Pipe	120	Linear Foot		
B-47	Replace Existing Valve Box	11	Each		

ITEM NO.	BID ITEMS	APPROX. QUANTITY	UNIT OF MEASURE	UNIT PRICE DOLLARS/CTS	TOTAL AMT. DOLLARS/CTS
B-48	Remove Abandoned Valve Box	21	Each		
B-49	General Landscape Restoration	1	Lump Sum		
B-50	Early Completion Bonus	10	Day	\$2,500	\$25,000
TOTAL SCHEDULE B					
SCHEDULE C					
C-1	Mobilization	1	Lump Sum		
C-2	Temporary Traffic Control	1	Lump Sum		
C-3	Erosion Prevention and Sediment Control	1	Lump Sum		
C-4	10-Inch PVC Storm Drain	250	Linear Foot		
C-5	Shallow Precast Manhole	2	Each		
C-6	Catch Basin	2	Each		
C-7	Abandon Existing 6-Inch Storm Drain	100	Linear Foot		
C-8	Abandon 8-Inch x 6-Inch Sewer Connection	1	Lump Sum		
C-9	Remove Existing Catch Basin	1	Each		
C-10	Adjust Manhole Rim to Grade	2	Each		
C-11	Remove and Replace Sewer Main	1	Lump Sum		
C-12	Remove and Replace Water Main	1	Lump Sum		
C-13	Remove Existing Storm Drain Manhole	1	Lump Sum		
C-14	Remove and Replace Standard Curb and Gutter	30	Linear Foot		
C-15	Install Underground Utility Support	3	Each		
C-16	Asphalt Trench Patch	50	Ton		
C-17	General Landscape Restoration	1	Lump Sum		
TOTAL SCHEDULE C					
SCHEDULE D					
D-1	Mobilization	1	Lump Sum		

ITEM NO.	BID ITEMS	APPROX. QUANTITY	UNIT OF MEASURE	UNIT PRICE DOLLARS/CTS	TOTAL AMT. DOLLARS/CTS
D-2	Temporary Traffic Control	1	Lump Sum		
D-3	Erosion Prevention and Sediment Control	1	Lump Sum		
D-4	Remove and Replace Standard Curb and Gutter	30	Linear Foot		
D-5	Remove and Replace 4-Inch PCC Sidewalk	10	Square Yard		
D-6	Remove Existing 12-Inch Concrete Sewer	50	Linear Foot		
D-7	10-Inch PVC Sewer	50	Linear Foot		
D-8	Connect to Existing Manhole	2	Each		
D-9	Standard Precast Manhole	3	Each		
D-10	Install Underground Utility Support	1	Each		
D-11	Asphalt Trench Patch	50	Ton		
D-12	Abandon Existing Sewer Manhole	1	Lump Sum		
D-13	Abandon Existing 8-Inch Sewer	125	Linear Foot		
D-14	General Landscape Restoration	1	Lump Sum		
TOTAL SCHEDULE D					
SUM OF EXTENDED TOTALS (SCHEDULES A + B + C + D)					

NOTE: Subject to change if addition or extensions are in error. (Unit price prevails.)

All Items must be bid to be responsive.

Bidder's Signature

Company Name *(please print)*

Date

Bidder's Name *(please print)*

Mailing Address *(please print)*

CCB License Number

Bidder's Title *(please print)*

City, State Zip

Federal Tax ID Number

Email

Telephone No.

Fax No.



APPLICATION AND PERMIT TO OCCUPY OR
PERFORM OPERATIONS UPON A STATE HIGHWAY

See Oregon Administrative Rule, Chapter 734, Division 55

PERMIT NUMBER

04M54753

CLASS: KEY#

GENERAL LOCATION			PURPOSE OF APPLICATION (TO CONSTRUCT/OPERATE/MAINTAIN)		
HIGHWAY NAME AND ROUTE NUMBER OR-34 / 210 / Corvallis-Lebanon			<input type="checkbox"/> POLE LINE	TYPE	MIN. VERT. CLEARANCE
HIGHWAY NUMBER 210	COUNTY Linn		<input type="checkbox"/> BURIED CABLE	TYPE	
BETWEEN OR NEAR LANDMARKS COLORADO LAKE DR. TO CALAPOOIA RIVER (MP 2.5 TO 4.5)			<input type="checkbox"/> PIPE LINE	TYPE	
HWY. REFERENCE MAP <i>GIS</i>	DESIGNATED FREEWAY <input type="checkbox"/> YES <input checked="" type="checkbox"/> NO	IN U.S. FOREST <input type="checkbox"/> YES <input checked="" type="checkbox"/> NO	<input type="checkbox"/> NON-COMMERCIAL SIGN AS DESCRIBED BELOW		
APPLICANT NAME AND ADDRESS CITY OF ALBANY ATTN: CHRIS CERKLEWSKI PO BOX 490 ALBANY, OR 97321			<input checked="" type="checkbox"/> MISCELLANEOUS OPERATIONS AND/OR FACILITIES AS DESCRIBED BELOW		
			FOR ODOT USE ONLY		
			BOND REQUIRED <input type="checkbox"/> YES <input checked="" type="checkbox"/> NO	REFERENCE: OAR 734-055-0035(2)	AMOUNT OF BOND <i>0</i>
			INSURANCE REQUIRED <input checked="" type="checkbox"/> YES <input type="checkbox"/> NO	REFERENCE: OAR 734-055-0035(1)	SPECIFIED COMP. DATE <i>1-1-2024</i>

DETAIL LOCATION OF FACILITY (For more space attach additional sheets)

MILE POINT	MILE TO POINT	ENGINEERS STATION	ENGINEERS TO STATION	SIDE OF HWY OR ANGLE OF CROSSING	DISTANCE FROM		BURIED CABLE OR PIPE		SPAN LENGTH
					CENTER OF PVMT	R/W LINE	DEPTH/VERT.	SIZE AND KIND	
2.5	5.5			Both Sides	Varies	Varies	N/A	N/A	N/A

DESCRIPTION OF DESIRED USE

INSTALL TEMPORARY TRAFFIC CONTROL SIGNING TO PROVIDE ADVANCE NOTICE OF ROAD CLOSURE ON QUEEN AVENUE IN ALBANY.

SPECIAL PROVISIONS (FOR ODOT USE ONLY)

TRAFFIC CONTROL REQUIRED

OPEN CUTTING OF PAVED OR SURFACED AREAS ALLOWED

YES [OAR 734-055-0025(6)] NO YES [OAR 734-055-0100(2)] NO [OAR 734-055-0100(1)]

AT LEAST 48 HOURS BEFORE BEGINNING WORK, THE APPLICANT OR HIS CONTRACTOR SHALL NOTIFY THE DISTRICT REPRESENTATIVE Thomas.Sagers@odot.oregon.gov AT PHONE NO.: _____ OR EMAIL OR FAX THIS PAGE TO THE DISTRICT OFFICE AT: _____ SPECIFY TIME AND DATE WORK IS TO OCCUR.

A COPY OF THIS PERMIT AND ALL ATTACHMENTS SHALL BE AVAILABLE AT THE WORK AREA DURING CONSTRUCTION.

ATTENTION: Oregon Law requires you to follow rules adopted by the Oregon Utility Notification Center. Those rules are set forth in OAR 952-001-0001 through OAR 952-001-0090. You may obtain copies of the rules by calling the center at (503) 232-1987.

CALL BEFORE YOU DIG 1-800-332-2344

COMMENTS (FOR ODOT USE ONLY)

Permit and permission to conduct work within the ODOT right of way. See attached provisions, pages 28.

IF THE PROPOSED APPLICATION WILL AFFECT THE LOCAL GOVERNMENT, THE APPLICANT SHALL ACQUIRE THE LOCAL GOVERNMENT OFFICIAL'S SIGNATURE BEFORE ACQUIRING THE DISTRICT MANAGER'S SIGNATURE.

LOCAL GOVERNMENT OFFICIAL SIGNATURE X	TITLE	DATE
APPLICANT SIGNATURE X <i>Christophe L. Ahlen</i>	APPLICATION DATE 12/14/2022	TITLE Civil Engineer III
TELEPHONE NO. 541-917-7646	DISTRICT MANAGER OR REPRESENTATIVE X <i>Kendall W. K.</i>	APPROVAL DATE <i>1/17/23</i>

04M 54753

DISTRICT 4 LANE RESTRICTIONS

10/1/2021

Highways	Mileposts	LANE RESTRICTIONS						NOTES:
		Off Hwy by 12 PM Friday	No Closures during Commute Times	No FRI/SAT closures & open by 10 AM Sunday	Nights Only	Nights Only in summer	No Weekend Closures	
I-5 / 001	209.06 - 244.68				X		X	Night work hours = 9 PM to 5:30 AM only
99W / 001W	63.42 - 75.68	X	X					
99W / 001W	75.68 - 82.59				X			
99W / 001W	82.59 - 104.36		X					
US101 / 009	91.46 - 105.90	X					X	
US101 / 009	105.90 - 143.33				X			Daytime closures allowed 10/1-3/1 in multi-lane sections
US101 / 009	144.37 - 167.61	X	X				X	
US20 / 016	0.00 - 1.96				X			
US20 / 016	1.96 - 32.98		X					
OR18 / 039	0.00 - 21.18	X	X			X	X	
OR34 / 027	39.81 - 58.56		X					
US20 / 033	0.00 - 5.75				X			
US20 / 033	5.75 - 49.76	X	X				X	Daytime work may be allowed in multi-lane sections
US20 / 033	49.76 - 56.80				X			Daytime work may be allowed in multi-lane sections
US20 / 31	0.00 - 11.23				X			
99E / 164	5.28 - 8.39		X					
99E / 058	0.00 - 5.81				X			
99E / 058	5.81 - 7.90	X	X					
OR22 / 032	10.63 - 22.01		X				X	
OR229 / 181	23.48 - 31.24		X					
OR223 / 191	4.73 - 9.95		X					
OR34 / 210	0.00 - 18.13	X	X					

(OVER)

04M 5 4 7 5 3

**√GENERAL PROVISIONS FOR POLELINE,
PIPELINE, BURIED CABLE PERMITS AND MISCELLANEOUS PERMITS**

(Rev) May 2003

APPLICANT: City of Albany		HIGHWAY: 210		MP: 2.5	
------------------------------	--	-----------------	--	------------	--

All checked (√) provisions apply.

WORKSITE

- √1. Permittee must call for utility locates before digging ("Call Before You Dig") 1-800-332-2344 per Oregon Administrative Rules (Chapter 952, Division 1). You may be held liable for damages. Pre-marking of excavation areas is required.
- √2. Permittee shall have a copy of this permit and all attachments at the work site. They shall be available to the District Manager or representative at their request.
3. Permittee shall acknowledge, in writing, receipt and review of Oregon Administrative Rules (Chapter 734, Division 55) governing miscellaneous facilities and operations on the highway right of way as the governing provisions of this permit or agreement. Copies of this rule may be obtained from any district maintenance office.
- √4. Permittee shall review the Oregon Administrative Rules (Chapter 734 Division 55) governing miscellaneous facilities and operations on the highway right of way as the governing provisions of this permit or agreement. Web Site: http://arcweb.sos.state.or.us/rules/OARS_700/OAR_734/734_055.html.
- √5. Access control fence must be maintained during construction and restored to its original or better condition after construction is complete.
- √6. The Permittee shall not use state highway right of way to display advertising signs or merchandise of any kind.
- √7. The stopping and parking of vehicles upon state highway right of way for the maintenance of adjoining property or in furtherance of any business transaction or commercial establishment is strictly prohibited.
8. All grass and small brush within the work area shall be rotary or flail mowed to ground level prior to the beginning of work to facilitate clean up. Disturbed areas shall be reseeded with grass native to the area in an appropriate seeding time.
- √9. The spreading of mud or debris upon any state highway is strictly prohibited and violation shall be cause for immediate cancellation of the permit. Clean up shall be at the applicant's expense. The highway shall be cleaned of all dirt and debris at the end of each work day, or more frequently if so determined by the District Manager or representative.
- √10. Permittee shall replace any landscape vegetation or fences that are destroyed. Any damage that is not fully recovered within 30 days (weather permitting) shall be replaced by ODOT at the expense of the Permittee. A "plant establishment" shall be understood to be part of the planting work to assure satisfactory growth of planted materials. The plant establishment period will begin when the original planting and all landscape construction has been

04M 54753

completed and approved. The length of the establishment period will be one calendar year or as defined in the permit Special Provisions.

11. Permittee shall install and maintain landscaped area. Planting shall be limited to low-growing shrubs, grass or flowers that do not attain sufficient height to obstruct clear vision in any direction. The Oregon Department of Transportation (ODOT) shall have the right to remove said landscaping at any time such removal may appear to be in the public interest, without liability or loss, injury, of damage or any nature whatsoever.

TRAFFIC

- √12. During construction or maintenance, the work area shall be protected in accordance with the current Manual on Uniform Traffic Control Devices, (MUTCD), Federal Highway Administration, US Department of Transportation, and the Oregon Department of Transportation supplements thereto. Flaggers must have a card or certificate indicating their completion of an approved work zone traffic control course. All traffic control devices shall be maintained according to the American Traffic Safety Services Association (ATSSA), Quality Standards for Work Zone Traffic Control Devices handbook.
13. Permittee shall provide a detailed traffic control plan for each phase of the work, showing signs and cones. Plans shall be reviewed and approved by Oregon Department of Transportation in advance of construction or maintenance.
- √14. All damaged or removed highway signs shall be replaced by the permittee. Installation shall be according to MUTCD standards or ODOT specifications, and shall be completed as soon as possible but no later than the end of the work shift.
15. ~~No lane restrictions are permitted on the roadway during the hours of darkness, on weekends, or between 6:00 AM and 9:00 AM, or 4:00 PM and 7:00 PM (Monday thru Thursday off by noon on Friday) without prior approval by ODOT.~~
- √16. Traffic control with lane restrictions are permitted on the roadway with the following guidelines:
See attached EXHIBIT: DISTRICT 4 LANE RESTRICTIONS, 02/26/2018

DRAINAGE

17. On-site storm drainage shall be controlled within the permitted property. No blind connections to existing state facilities are allowed.
18. Excavation shall not be done on ditch slopes. Trench excavation shall either be at ditch bottom or outside ditch area.
19. Only earth or rock shall be used as fill material and shall slope so as not to change or adversely affect existing drainage. **Fine grade and seed the finished fill with native grasses to prevent erosion.**
20. A storm drainage study stamped by an Oregon Registered Professional Engineer (PE) is required. The study must meet standards of the National Pollution Discharge Elimination Systems (NPDES) when any of the following conditions apply:
 - Whenever a four inch pipe is inadequate to serve the developed area,
 - development site is one quarter acre or larger in size, OR contributes one half cubic feet per second OR directly or indirectly affects state facilities,
 - or as directed by the District Manager or representative.
 - An advance deposit for ODOT hydrology reviews may be required.

04M 54753

21. Permittee shall provide on-site retention for storm water runoff that exceeds that of the undeveloped site.
22. All water discharged to an ODOT drainage system must be treated prior to discharge. All requests for connection to an ODOT storm system must meet any requirements of the National Pollutant Discharge Elimination System (NPDES). This may include local jurisdiction approval of on-site water quality treatment facilities and/or development of an operation and maintenance plan for any on-site water quality treatment facility, as determined by local jurisdiction

EXCAVATION/CONSTRUCTION

23. The following ODOT documents and any supplements and subsequent revisions thereto, where applicable and not otherwise superceded by the permit language herein, but only to the extent that they provide standards and performance requirements for work to be performed under the permit, shall be incorporated for use in the permit: "Oregon Standard Specifications for Construction (2015)" and relevant Metric Standard Drawings. ODOT shall have authority over acceptance of all materials and workmanship performed under this permit as stated in Section 00150.00 of the "Oregon Standard Specifications for Construction (2015)." For additional Supplemental and Special Provisions please refer to: <http://www.odot.state.or.us/techserv/roadway/specs/home.htm>. Standard Specification books is available on this site.
24. Open cutting of pavement is allowed in areas specifically approved by District Manager or representative.
25. Trench backfill shall be according to the attached typical drawing, marked as Exhibit _____.
26. Open cutting of the highway is allowed with construction in accordance with OAR 734-55-0100. All excavation in paved areas shall be backfilled and the roadway surface patched before the end of each shift. In special cases where steel plates are allowed, said plates shall be pinned and a temporary cold patch applied to the edges. The permittee shall be fully responsible for monitoring and maintenance of temporary patching and steel plating.
27. Compaction tests shall be required for each open cut per Oregon Standard Specification for Construction. Compaction tests shall be conducted once for every 300 lineal feet per lift of continuous trench according to the Manual of Field Test Procedures (MFTP), published by ODOT. Percent Compaction shall be 95%. At the discretion of the District Manager or representative, results of compaction test shall be provided to District Manager or representative at applicants' expense.
28. Control Density Fill (CDF) shall be used as surface backfill material in place of crushed rock in open trenches that impact the travel portions of the highway. A ¾"-0, or 1"-0 rock will be used for the aggregate. The amount of cement used shall not exceed 3.0% of the total mixture's weight. Maximum compressed strengths must not exceed 250 pounds per square inch (psi).
29. Surface restoration shall be a minimum of eight inches of hot asphalt-concrete (AC), compacted in two inch lifts, or match existing pavement depth, whichever is greater. Sand-seal all edges and joints.
30. All aggregate shall conform to Oregon Standard Specification for Construction, Section 02630 - Base Aggregate.
- √31. Any area of cut or damaged asphalt shall be restored by the applicant (call ODOT for restoration requirements). For a period of two years following the patching of paved surface, permittee shall be responsible for the condition of permittee's pavement patches, and during that two year period shall repair to District Manager or representative satisfaction any of the patches which become settled, cracked, broken, or otherwise faulty.

04M 54753

32. An overlay to seal an open-cut area shall be completed prior to the end of the construction season, or when minimum temperature allows per "Oregon Standard Specification for Construction" and any subsequent revisions thereto. Typical overlay shall be 1.5 inches deep and cover the affected area from edge of pavement to edge of pavement, and taper longitudinally at a fifty feet to one inch (50' : 1") ratio. Taper may be adjusted by the District Manager as required. For a period of two years following this patching of the surface, the permittee shall be responsible for the condition of said pavement patches, and during that time shall repair to the District Manager or representative's satisfaction any of the patches which become settled, cracked, broken or otherwise faulty.
33. Highway crossings shall be bored or jacked. Bore pits shall be located behind ditch line or in areas satisfactory to the District Manager. Unattended pits shall either be protected by a six-foot fence, backfilled, or steel plated and pinned.
34. Permittee shall install a "tracer wire" or other similar conductive marking tape or device, if installing any non-conductive, unlocatable underground facility, in order to comply with Oregon Utilities Coordination Council (OUCC), per OAR 952-01-0070 (6).
35. Trench backfill outside of ditch line or in approved areas can be native soil compacted at optimum moisture in twelve inch layers to 90% or greater of the maximum density.
36. Native material that is found to be unsatisfactory for compaction shall be disposed of off the project and granular backfill used.
37. Trench backfill in rock slope or shoulder shall be crushed 1"-0 or ¾"-0 size rock compacted at optimum moisture in eight-inch layers. Compaction tests shall be conducted according to the Manual of Field Test Procedures (MFTP), published by ODOT. Percent compaction shall be 95%. At the discretion of the District Manager or representative, results of compaction tests shall be provided to District Manager or representative at applicant's expense.
38. Where excavation is on fill slope steeper than a two to one (2:1) ratio, slope protection shall be provided using four-inch size rock laid evenly to a minimum depth of twelve inches.
39. No more than 300 feet of trench longitudinally along the highway shall be left open at any one time and no trench shall be left in an open condition overnight (during non work hours).
40. Areas of disturbed cut and fill slopes shall be restored to a condition suitable to the District Manager or representative. Areas of erosion to be inlaid with an acceptable riprap material.
41. All underground utilities shall be installed with three-foot or more of horizontal clearance from existing or contract plans guardrail posts and attachments. All non-metallic water, sanitary and storm sewer pipe shall have an electrically conductive insulated Number 12-gauge copper tracer wire the full length of the installed pipe using blue wire for water and green for storm and sanitary sewer piping.
42. Any area of cut or damaged concrete shall be restored in accordance with the attached Typical Section-Pipe Section under sidewalk.
43. Utility markers and pedestals shall be placed as near the highway right-of-way line as practical. In no case shall pedestals and line markers be located within the highway maintenance area.
44. No cable plowing is allowed within the lateral support of the highway asphalt (i.e. at six feet lower than the edge of the asphalt, no plowing within nine feet of the edge of the asphalt).

04M 5 4 7 5 3

45. Review by ODOT Bridge Engineers is required for all proposed bridge and structure attachments and for utility or any facilities to be installed within sixteen feet of bridge foundations, supports, and wells or related, or within the influence zone of bridge facilities.

Miscellaneous:

- √46. Permittee shall be responsible and liable for (1) investigating presence/absence of any legally protected or regulated environmental resource(s) in the action area; (2) determining any and all restrictions or requirements that relate to the proposed actions, and complying with such, including but not limited to those relating to hazardous material(s), water quality constraints, wetlands, archeological or historic resources(s) state and federal threatened or endangered species, etc., (3) complying with all federal, state, and local laws, and obtaining all required and necessary permits and approvals.
- √47. If the permittee impacts a legally protected/regulated resource, permittee shall be responsible for all costs associated with such impact, including, but not limited to all costs of mitigation and rehabilitation, and shall indemnify, and hold ODOT harmless for such impacts and be responsible and liable to ODOT for any associated costs or claims that ODOT may have.
- √48. Plans are approved by ODOT in general only and do not relieve the permittee from completing construction improvements in a manner satisfactory to ODOT. The District Manager or representative may require field changes. When revisions are made in the field, permittee is responsible to provide "as built" drawings, within 60 days from completion of highway improvements, and shall submit them to the District Office issuing the permit.
- √49. Permittee shall be responsible for locating and preserving all existing survey monumentation within the work area in accordance with ORS 209.150 and/or 209.155. If monumentation or its accessories are inadvertently or otherwise disturbed or destroyed, applicant shall be responsible for all costs and coordination associated with it's reestablishment by a professional licensed surveyor.

SPECIAL PROVISIONS for TRAFFIC CONTROL PERMITS

- √50. NO UNPROTECTED CLEATS ON THE ASPHALT. Any damages resulting from the applicants operations shall be immediately identified on the road in a manner approved by Authorized Officer until repairs are made to the satisfaction of the ODOT District Manager or his/her representatives. Any damage to the asphalt surface or shoulder shall be temporarily repaired within 24 hours. Track cleats may be accepted upon request, provided that plywood, tires, or any other acceptable means can protect the asphalt.
- √51. As this permit is for traffic control only, the highway structure should not be disturbed. If disturbed, contact ODOT District Manager ODOT Representative.
- √52. ODOT Station 2 Contact Requirements: When traffic control is required that disrupts, diverts, or may cause traffic impacts or delays contact ODOT Station 2 at 503-362-0457 48hours prior to working. You will need to provide a contact name, phone number, the highway, mile point, type of work and how long traffic will be affected. If any highway sign is impacted during construction, contact ODOT Station 2 at 503-362-0457

√53. All equipment shall be parked off the right-of-way or in areas acceptable to the ODOT District Manager or the ODOT Representative.

√54. ADA:

Permittee shall take measures necessary to maintain the accessibility of the state highway by individuals with disabilities to the current ADA standard during the course of the permitted work by following the latest version of the Oregon Temporary Traffic Control Handbook section 1.6.

Permittee shall ensure that advance notice of any temporary pedestrian route is provided in an accessible format to the public, people with disabilities, and disability organizations to the greatest extent possible. The Notice is to be sent to the organizations on the contact list for Centers for Independent Living at: [CenterContactInformationJanuary2019.pdf](#) (oregon.gov)

Permittee shall be responsible to restore or replace any curbs or curb ramps damaged by the permitted activity according to ODOT's ADA Standards available at <https://www.oregon.gov/ODOT/Engineering/Pages/Accessibility.aspx>.

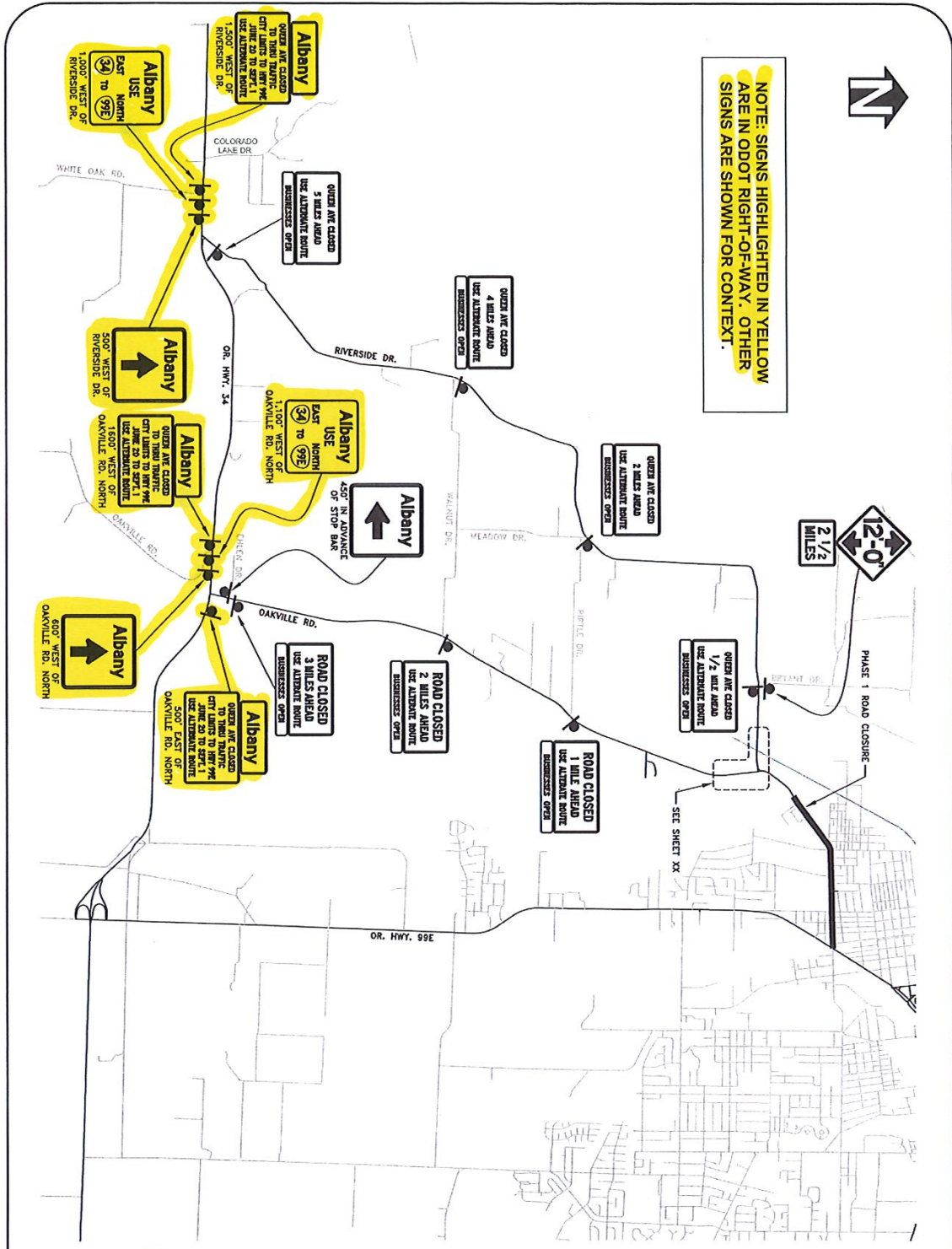
ADA standards in place at the time a permit is issued are to be met when a permit is issued for: Repair or installation of new sidewalk, curb, crosswalk, or a median that includes a pedestrian walkway. Work that damages (removes or cuts into or through) an existing curb or curb ramp. ADA Curb and Curb Ramp Upgrades on Utility Permits MG 14-05 Work that damages a curb or sidewalk where no ramp exists but where there is a crosswalk or is at an intersection where pedestrians would be expected to cross the highway even if there is no crosswalk in place. Work that requires the replacement of any part of the curb or curb ramp including the pan of the curb ramp.

Acceptance of Work shall be by Specially trained ODOT staff is to inspect curb ramps prior to acceptance of the permitted work to ensure the curb or curb ramp meets ADA standards. Should the ADA accommodations not be satisfactorily completed, ODOT will notify the permit applicant in writing. The permit applicant will be responsible to take corrective action in the time and manner prescribed by ODOT.


Any review or inspection of the curbs or curb ramps conducted by ODOT does not relieve the Permittee of the responsibility to comply with any other aspect of federal, state, and local laws, rules and regulations applicable to the work allowed under the permit including but not limited to the Americans with Disabilities Act of 1990.

√55. Contact ODOT at 541-757-4211 to discuss questions or concerns regarding this permit. Any changes or part of the permit that the applicant does not understand or agree with, must be changed or worked out prior to commencing the work.

04M 54753



REGISTERED PROFESSIONAL ENGINEER
 56,471 PE
 CHRISTOPHER L. CERKLEWSKI
 OREGON
 12/19/2020
 Matthew T. Johnson
 PROJECT NO. ST-22-01
 SHEET NO. 80A OF 98
 EXPIRATION DATE: 12/31/2023
 FILE: TTC2.DWG

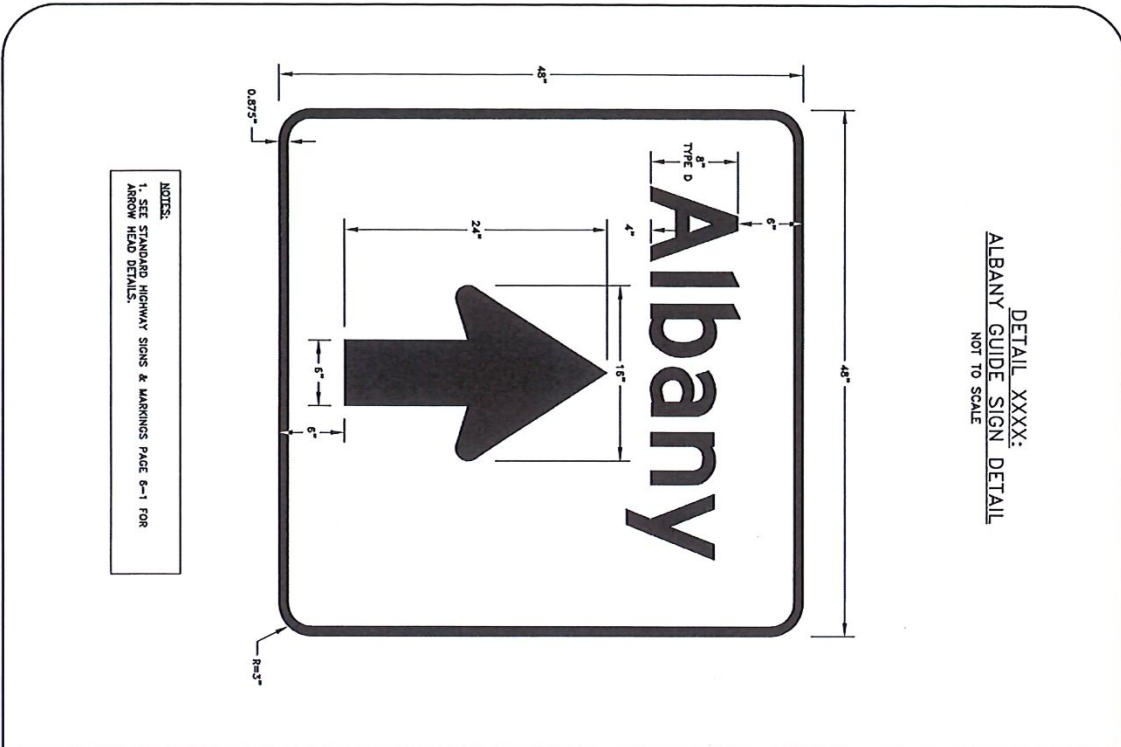

PUBLIC WORKS DEPARTMENT
ENGINEERING SERVICES
ST-22-01, QUEEN AVENUE REHABILITATION: CITY LIMITS TO PACIFIC BLVD.
TEMPORARY TRAFFIC CONTROL PLAN - PHASE 1

DESIGNED: C. CERKLEWSKI		
DRAWN: C. CERKLEWSKI		
CHECKED: S. BELCASTRO		
DATE: 12/12/2022		
REVISIONS		
DATE:	NO:	BY:

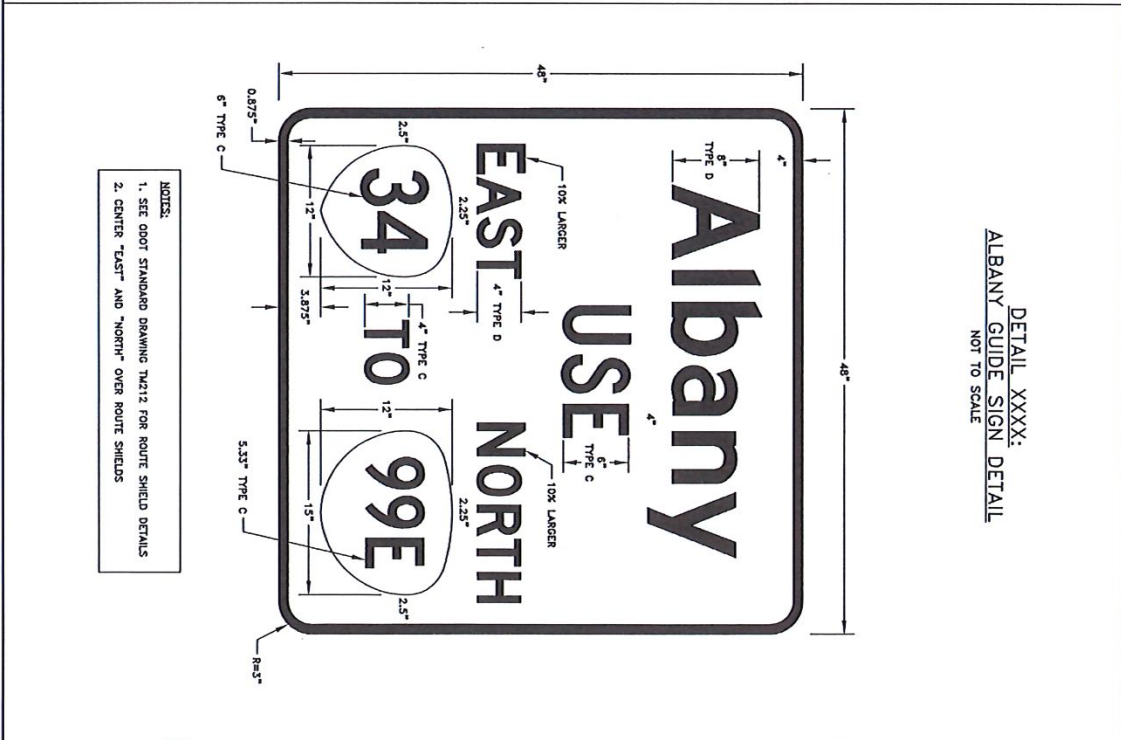
04M54753

 W20-1 36" X 36" BLACK LEGEND ORANGE BACKGROUND	 W3-1 48" X 18" BLACK LEGEND ORANGE BACKGROUND 4" TYPE D UPPERCASE LETTERS	 M4-10R 48" X 18" CUSTOM 60" X 36" BLACK LEGEND ORANGE BACKGROUND 4" TYPE C UPPERCASE LETTERS	 M4-10L 48" X 18" CUSTOM 60" X 36" BLACK LEGEND ORANGE BACKGROUND 4" TYPE C UPPERCASE LETTERS	DESIGNED: C. CERKLEWSKI DRAWN: C. CERKLEWSKI CHECKED: S. BELCASTRO DATE: 12/12/2022
 W20-2 36" X 36" BLACK LEGEND ORANGE BACKGROUND	 W3-1 48" X 18" BLACK LEGEND ORANGE BACKGROUND 4" TYPE D UPPERCASE LETTERS	 M4-9L 30" X 24" CUSTOM 60" X 36" BLACK LEGEND ORANGE BACKGROUND 4" TYPE C UPPERCASE LETTERS	 M4-9R 30" X 24" CUSTOM 60" X 36" BLACK LEGEND ORANGE BACKGROUND 4" TYPE C UPPERCASE LETTERS	REVISIONS NO: BY:
 W20-3 36" X 36" BLACK LEGEND ORANGE BACKGROUND	 W3-1 48" X 18" BLACK LEGEND ORANGE BACKGROUND 4" TYPE D UPPERCASE LETTERS	 M4-8 24" X 12" CUSTOM 48" X 48" BLACK LEGEND ORANGE BACKGROUND DISTANCE "X" AS SHOWN	 M4-8 24" X 12" CUSTOM 48" X 48" BLACK LEGEND ORANGE BACKGROUND DISTANCE "X" AS SHOWN	PUBLIC WORKS DEPARTMENT ENGINEERING SERVICES
 W20-4 36" X 36" BLACK LEGEND ORANGE BACKGROUND	 W3-1 48" X 18" BLACK LEGEND ORANGE BACKGROUND 4" TYPE D UPPERCASE LETTERS	 W3-1 48" X 18" BLACK LEGEND ORANGE BACKGROUND 4" TYPE D UPPERCASE LETTERS	 W3-1 48" X 18" BLACK LEGEND ORANGE BACKGROUND 4" TYPE D UPPERCASE LETTERS	ST-22-01, QUEEN AVENUE REHABILITATION: CITY LIMITS TO PACIFIC BLVD. TEMPORARY TRAFFIC CONTROL DETAILS
 W3-5 36" X 36" BLACK LEGEND ORANGE BACKGROUND	 W3-5 60" X 12" (APPROX) 4" TYPE D LETTERS WHITE LEGEND BLUE BACKGROUND	 W3-5 60" X 12" (APPROX) 4" TYPE D LETTERS WHITE LEGEND BLUE BACKGROUND	 W3-5 60" X 12" (APPROX) 4" TYPE D LETTERS WHITE LEGEND BLUE BACKGROUND	NOTES: 1. ALL SIGNS SHALL COMPLY WITH THE DETAILS SHOWN IN THE MANUAL ON UNIFORM TRAFFIC CONTROL DEVICES, THE STANDARD HIGHWAY SIGNS AND MARKINGS BOOK, AND THE ODOT SIGN POLICY. 2. ALL SIGNS SHALL MEET ODOT SPECIFICATIONS. 3. SIGNS SHALL BE MOUNTED ON TEMPORARY POSTS OR TEMPORARY SIGN SUPPORTS PER ODOT SPECIFICATIONS UNLESS OTHERWISE NOTED ON PLANS OR APPROVED BY THE ENGINEER. 4. POSTS SHALL BE PLACED TO MAINTAIN MINIMUM 4' WIDTH OF SIDEWALKS AND MINIMUM 7' VERTICAL CLEARANCE OVER SIDEWALKS. SIGNS SHALL NOT OVERHANG ROADWAYS. 5. ALL SIGNS WITH ORANGE BACKGROUND SHALL USE FLUORESCENT ORANGE PER ODOT SPECIFICATIONS.
 R11-2 48" X 30" ROAD CLOSED THRU TRAFFIC	 R11-4 60" X 30" ROAD CLOSED THRU TRAFFIC	 R11-4 60" X 30" ROAD CLOSED THRU TRAFFIC	 R11-4 60" X 30" ROAD CLOSED THRU TRAFFIC	REGISTERED PROFESSIONAL ENGINEER 58,471FE ALYX2020 CHRISTOPHER L. CERKLEWSKI OREGON


04M 5 4 7 5 3



DETAIL XXXX:
ALBANY GUIDE SIGN DETAIL
NOT TO SCALE



DETAIL XXXX:
ALBANY GUIDE SIGN DETAIL
NOT TO SCALE

<p>DESIGNED: C. CERKLEWSKI DRAWN: C. CERKLEWSKI CHECKED: S. BELCASTRO DATE: 12/12/2022</p>	<p>REVISIONS</p> <table border="1" style="width: 100%; border-collapse: collapse;"> <thead> <tr> <th>DATE:</th> <th>NO:</th> <th>BY:</th> </tr> </thead> <tbody> <tr> <td> </td> <td> </td> <td> </td> </tr> <tr> <td> </td> <td> </td> <td> </td> </tr> <tr> <td> </td> <td> </td> <td> </td> </tr> </tbody> </table>	DATE:	NO:	BY:										<p style="text-align: center;">  PUBLIC WORKS DEPARTMENT ENGINEERING SERVICES </p> <p style="text-align: center;">ST-22-01, QUEEN AVENUE REHABILITATION: CITY LIMITS TO PACIFIC BLVD. TEMPORARY TRAFFIC CONTROL DETAILS</p>
DATE:	NO:	BY:												

REGISTRED PROFESSIONAL ENGINEER
56,471PE
CHRISTOPHER L. CERKLEWSKI
OREGON
12/12/2022

EXPIRATION DATE: 12/31/2023
SHEET NO. 85 OF 96
PROJECT NO. ST-22-01
FILE: BASE.DWG

210

2.5 - 5.5
04M 5 4 7 5 3

DETERING Lynn S

From: Cerklewski, Chris <Chris.Cerklewski@cityofalbany.net>
Sent: Wednesday, December 14, 2022 3:24 PM
To: SAGERS Thomas *Tom; DETERING Lynn S; WAHL Carla S
Subject: Permit Application (Oregon Highway 34)
Attachments: ODOT-APPLICATION-OR34.ST-22-01.pdf

This message was sent from outside the organization. Treat attachments, links and requests with caution. Be conscious of the information you share if you respond.

All,

Attached is a permit application to install advanced traffic control signing along Oregon Highway 34 in the vicinity of Riverside Drive and Oakville Road to provide advanced notice of a road closure on Queen Avenue. Additional traffic control for the work on Queen Avenue at Oregon Highway 99E has been submitted in a separate permit application.

Let me know if you have any questions.

Chris Cerklewski, P.E.
City of Albany - Public Works, Engineering
P.O. Box 490
Albany, OR 97321
(541) 917-7646 Phone
(541) 917-7573 Fax
chris.cerklewski@cityofalbany.net

DISCLAIMER: This email may be considered a public record of the City of Albany and subject to the State of Oregon Retention Schedule. This email also may be subject to public disclosure under the Oregon Public Records Law. This email, including any attachments, is for the sole use of the intended recipient(s) and may contain confidential and privileged information. Any unauthorized review, use, disclosure or distribution is prohibited. If you have received this communication in error, please notify the sender immediately and destroy all copies of the original message.

Linn County Road Department Right-of-Way Encroachment Permit

Pursuant to LCC chapter 690 and ORS chapter 374

Permit No.

22-7829

Permit Type:

OTHER

Account Number: 7303

City of Albany

PO Box 490

Albany, OR 97321-

Contact: Chris Cerklewski 541-990-7665

Phone: (541) 917-7646

Fax:

Email: chris.cerklewski@cityofalbany.n

Road: 0000 - SEE LIST

Permit Fee: \$0.00

Location: T11S, R04W, SECTIONS 13, 14, 22, 23, 26, 28, 32 & 34

Description: INSTALL TEMPORARY TRAFFIC CONTROL SIGNS ON RIVERSIDE DR, OAKVILLE RD AND QUEEN AVE IN ADVANCE OF A ROAD CLOSURE ON QUEEN AVE IN ALBANY DURING THE SUMMER OF 2023.

Comments: APPROVED AS SUBMITTED. FOLLOW MUTCD (MANUAL ON UNIFORM TRAFFIC CONTROL DEVICES) AT ALL TIMES. WHEN PROJECT IS COMPLETE AND SIGNS ARE NO LONGER NEEDED, THEY SHALL BE REMOVED AND WORK AREA SHALL BE RESTORED TO ORIGINAL OR BETTER CONDITION.

CONTACT ROAD DEPARTMENT PRIOR TO START OF WORK AND FOR INSPECTION AS REQUIRED.

Additional Special Provisions Attached: Standard Drawings Attached:

Road List:

0001 - QUEEN AV

0001 - RIVERSIDE DR

0032 - OAKVILLE RD

By signing below, Permittee agrees to comply with all comments, special provisions, and standard drawings contained herein or attached. Permittee also agrees to comply with the Linn County Road Department Right-of-Way Encroachment Permit Standard Provisions, revised 7/06/2007, which by this reference is made a part of this permit. Copies of Standard Provisions are available on-line at www.co.linn.or.us/Roads or may be obtained by contacting the Linn County Road Department at the address listed below. Permittee must keep a copy of this permit on site while work is being performed.

This permit is not valid unless signed by the Permittee. Call Linn County Road Department at the number below two business days prior to start of work.

Accepted By (Permittee):

Christopher L. Chlebowski

Date:

1/12/23

ATTENTION: Call Before You Dig! Oregon law requires you to follow rules adopted by the Oregon Utility Notification Center. Those rules are set forth in OAR 952-001-0010 through OAR 952-001-0090. You may obtain copies of the rules by calling the center. Note: the telephone number for the Oregon Utility Notification Center is (800) 332-2344

Final Insp By:

Date:

Approved By:

Walter E. [Signature]

Date: 1/10/2023

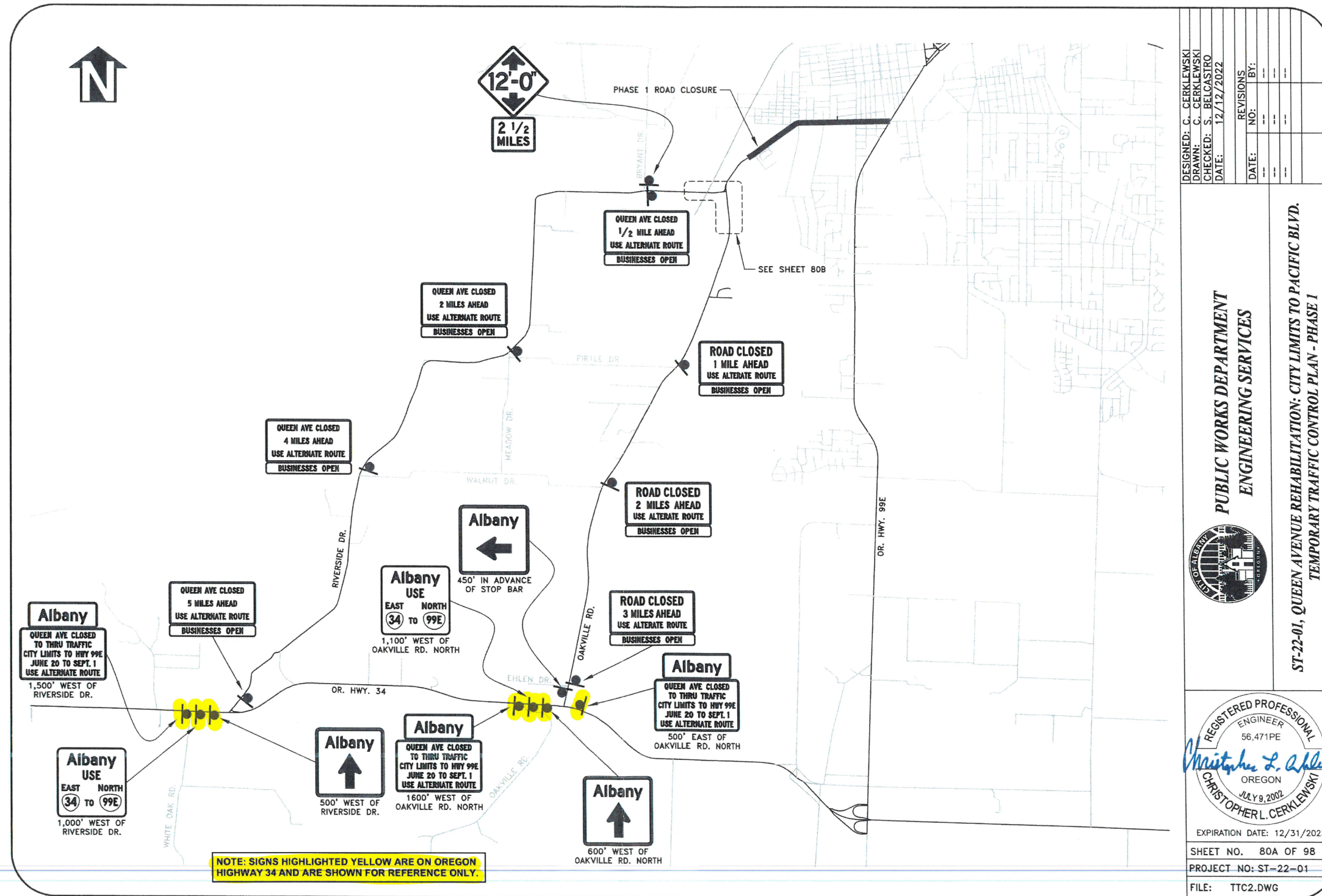
LINN COUNTY ROAD DEPARTMENT · 3010 FERRY STREET SW · ALBANY, OREGON 97322

Telephone: (541) 967-3919

Fax: (541) 924-0202

www.co.linn.or.us/Roads

Printed: 1/10/2023 9:39:39 AM



DESIGNED: C. CERKLEWSKI	REVISIONS
DRAWN: C. CERKLEWSKI	NO: _____
CHECKED: S. BELCASTRO	BY: _____
DATE: 12/12/2022	DATE: _____

**PUBLIC WORKS DEPARTMENT
ENGINEERING SERVICES**

**ST-22-01, QUEEN AVENUE REHABILITATION- CITY LIMITS TO PACIFIC BLVD.
TEMPORARY TRAFFIC CONTROL PLAN - PHASE 1**

REGISTERED PROFESSIONAL
ENGINEER
56,471PE
Christopher L. Cerkowski
OREGON
JULY 9, 2002
CHRISTOPHER L. CERKLEWSKI

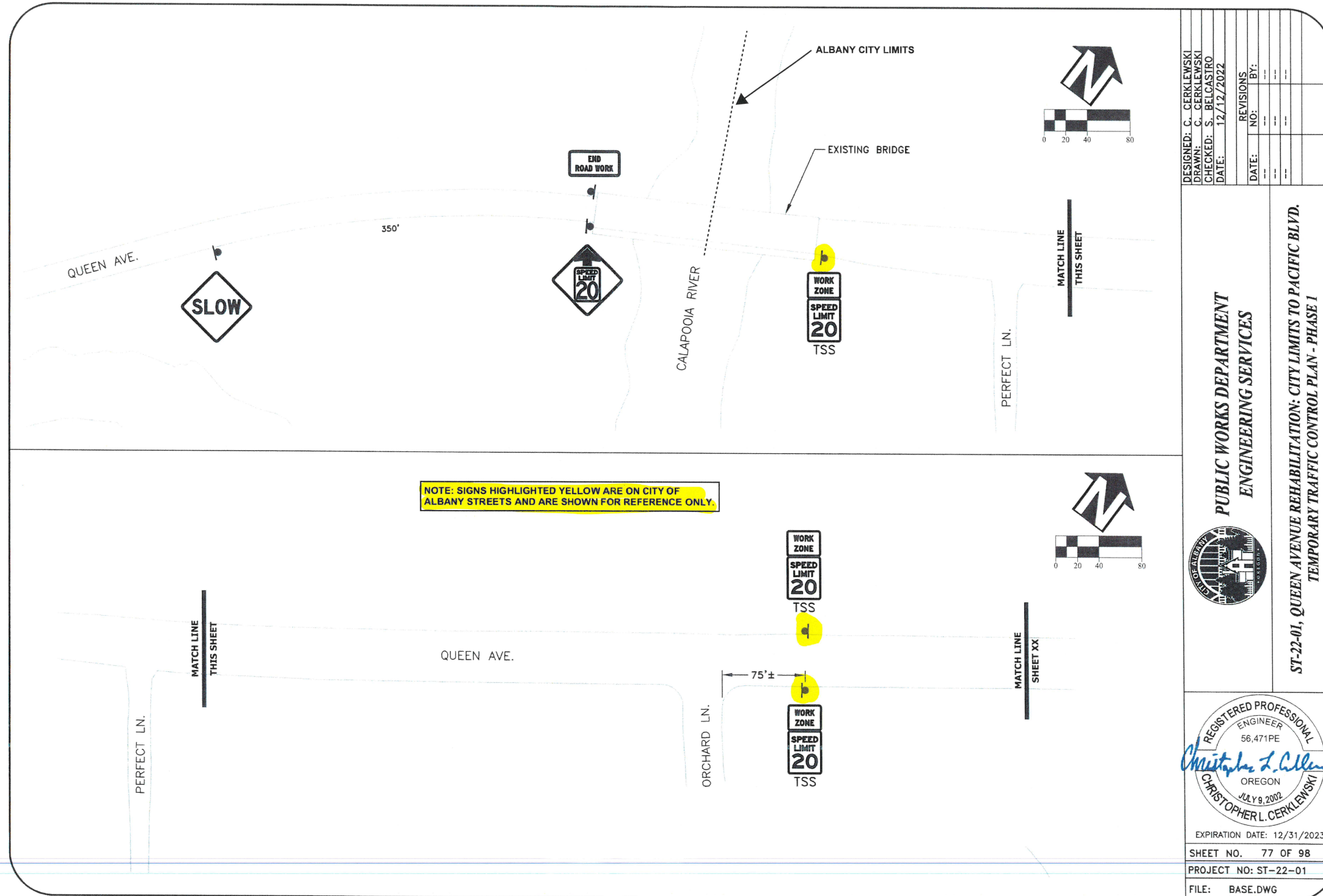
EXPIRATION DATE: 12/31/2023

SHEET NO. 80A OF 98

PROJECT NO: ST-22-01

FILE: TTC2.DWG

APPROVED
Permit No. 22-7482A
Linn County Road Dept



DESIGNED: C. CERKLEWSKI	REVISIONS
DRAWN: C. CERKLEWSKI	NO:
CHECKED: S. BELCASTRO	BY:
DATE: 12/12/2022	DATE:

PUBLIC WORKS DEPARTMENT
ENGINEERING SERVICES

ST-22-01, QUEEN AVENUE REHABILITATION: CITY LIMITS TO PACIFIC BLVD.
 TEMPORARY TRAFFIC CONTROL PLAN - PHASE I

REGISTERED PROFESSIONAL ENGINEER
 56,471 PE
 OREGON
 JULY 9, 2002
 CHRISTOPHER L. CERKLEWSKI

EXPIRATION DATE: 12/31/2023

SHEET NO. 77 OF 98
 PROJECT NO: ST-22-01
 FILE: BASE.DWG

	<p>W20-1 36"X36"</p>	<p>WEST</p>	<p>D3-1 24"X8" BLACK LEGEND ORANGE BACKGROUND 4" TYPE D UPPERCASE LETTERS</p>		<p>M4-10L 48"X18"</p>	<p>QUEEN AVE CLOSED TO THRU TRAFFIC CITY LIMITS TO HWY 99E JUNE 20 TO SEPT. 1 USE ALTERNATE ROUTE</p>	<p>CUSTOM 60"X36" BLACK LEGEND ORANGE BACKGROUND 4" TYPE C UPPERCASE LETTERS</p>	<p>DESIGNED: C. CERKLEWSKI DRAWN: C. CERKLEWSKI CHECKED: S. BELCASTRO DATE: 12/12/2022</p> <p>REVISIONS NO: BY:</p>
	<p>W20-2 36"X36"</p>	<p>EAST</p>	<p>D3-1 24"X8" BLACK LEGEND ORANGE BACKGROUND 4" TYPE D UPPERCASE LETTERS</p>		<p>M4-10R 48"X18"</p>	<p>QUEEN AVE CLOSED TO THRU TRAFFIC HWY 99E TO FERRY ST. XXXX TO XXXX USE ALTERNATE ROUTE</p>	<p>CUSTOM 60"X36" BLACK LEGEND ORANGE BACKGROUND 4" TYPE C UPPERCASE LETTERS DATES "XXXX" TO BE DETERMINED</p>	<p>PUBLIC WORKS DEPARTMENT ENGINEERING SERVICES</p> <p>ST-22-01, QUEEN AVENUE REHABILITATION: CITY LIMITS TO PACIFIC BLVD. TEMPORARY TRAFFIC CONTROL DETAILS</p>
	<p>W20-3 36"X36"</p>	<p>NEXT RIGHT</p>	<p>D3-1 24"X8" BLACK LEGEND ORANGE BACKGROUND 4" TYPE C UPPERCASE LETTERS</p>		<p>M4-9L 30"X24"</p>	<p>QUEEN AVE CLOSED X MILES AHEAD USE ALTERNATE ROUTE</p>	<p>CUSTOM 60"X30" BLACK LEGEND ORANGE BACKGROUND 4" TYPE C UPPERCASE LETTERS DISTANCE "X" AS SHOWN</p>	<p>REGISTERED PROFESSIONAL ENGINEER 56,471PE CHRISTOPHER L. CERKLEWSKI OREGON JULY 9, 2002</p> <p>EXPIRATION DATE: 12/31/2023</p> <p>SHEET NO. 84 OF 98 PROJECT NO: ST-22-01 FILE: BASE.DWG</p>
	<p>OW15-1 36"X36" BLACK LEGEND ORANGE BACKGROUND</p>	<p>LEFT LANE</p>	<p>D3-1 24"X8" BLACK LEGEND ORANGE BACKGROUND 4" TYPE C UPPERCASE LETTERS</p>		<p>M4-9R 30"X24"</p>	<p>ROAD CLOSED X MILES AHEAD USE ALTERNATE ROUTE</p>	<p>R11-3a (MODIFIED) 60"X30" BLACK LEGEND ORANGE BACKGROUND DISTANCE "X" AS SHOWN</p>	
	<p>W3-5 36"X36" BLACK LEGEND ORANGE BACKGROUND</p>	<p>Queen Ave</p>	<p>D3-1 30"X8" BLACK LEGEND ORANGE BACKGROUND 4" TYPE C LETTERS</p>		<p>CG20-6 30"X36"</p>	<p>Albany USE EAST NORTH 34 TO 99E</p>	<p>CUSTOM 48"X48" BLACK LEGEND ORANGE BACKGROUND SEE DETAIL SHEET XX</p>	
	<p>W12-2 36"X36" BLACK LEGEND ORANGE BACKGROUND</p>	<p>Albany</p>	<p>D1-1 (MODIFIED) 48"X18" BLACK LEGEND ORANGE BACKGROUND 8" TYPE D LETTERS</p>		<p>M4-8 24"X12"</p>	<p>Albany ↑</p>	<p>CUSTOM 48"X48" BLACK LEGEND ORANGE BACKGROUND ROTATE ARROW AS SHOWN SEE DETAIL SHEET XX</p>	
<p>2 1/2 MILES</p>	<p>W16-3 30"X24" BLACK LEGEND ORANGE BACKGROUND</p>	<p>BUSINESSES OPEN</p>	<p>CUSTOM 60"X12" (APPROX) 4" TYPE D LETTERS WHITE LEGEND BLUE BACKGROUND</p>		<p>M4-8a 24"X18"</p>	<p>↑</p>	<p>SIGN MOUNTED ON TEMPORARY POST</p>	
<p>FINES DOUBLE</p>	<p>R2-6 24"X24" USE "FINES DOUBLE" MESSAGE</p>	<p>WORK ZONE</p>	<p>G20-5aP 24"X18"</p>		<p>D9-2 24"X24"</p>	<p>TSS</p>	<p>MOUNT SIGN ON TEMPORARY SIGN SUPPORT PER ODOT STANDARD DRAWING TM821.</p>	
<p>ROAD CLOSED THRU TRAFFIC</p>	<p>R11-4 60"X30"</p>	<p>SPEED LIMIT 20</p>	<p>R2-1 24"X30"</p>		<p>M5-1 21"X15" DIRECTION AS SHOWN</p>	<p>↑</p>	<p>SIGN MOUNTED ON TYPE III BARRICADE</p>	
<p>ROAD CLOSED</p>	<p>R11-2 48"X30"</p>	<p>ROAD CLOSED TO THRU TRAFFIC</p>	<p>R11-4 60"X30"</p>		<p>M6-1 21"X15" DIRECTION AS SHOWN</p>	<p>↑</p>		
		<p>ROAD CLOSED</p>	<p>R11-2 48"X30"</p>		<p>M6-3 21"X15"</p>	<p>↑</p>		
					<p>CUSTOM 24"X18" WHITE LEGEND BLUE B.G. 4" LETTERS B TOP/C BOTTOM</p>			

DETAIL XXXX:
ALBANY GUIDE SIGN DETAIL
NOT TO SCALE



NOTES:
1. SEE STANDARD HIGHWAY SIGNS & MARKINGS PAGE 6-1 FOR ARROW HEAD DETAILS.

DETAIL XXXX:
ALBANY GUIDE SIGN DETAIL
NOT TO SCALE



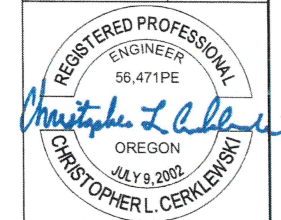
NOTES:
1. SEE STANDARD HIGHWAY SIGNS & MARKINGS PAGE 6-1 FOR ARROW HEAD DETAILS.
2. ROTATE ARROW LEFT OR RIGHT AS SHOWN ON THE CONSTRUCTION DRAWINGS

DESIGNED: C. CERKLEWSKI	REVISIONS
DRAWN: C. CERKLEWSKI	NO:
CHECKED: S. BELCASTRO	BY:
DATE: 12/12/2022	

PUBLIC WORKS DEPARTMENT
ENGINEERING SERVICES



ST-22-01, QUEEN AVENUE REHABILITATION: CITY LIMITS TO PACIFIC BLVD.
TEMPORARY TRAFFIC CONTROL DETAILS

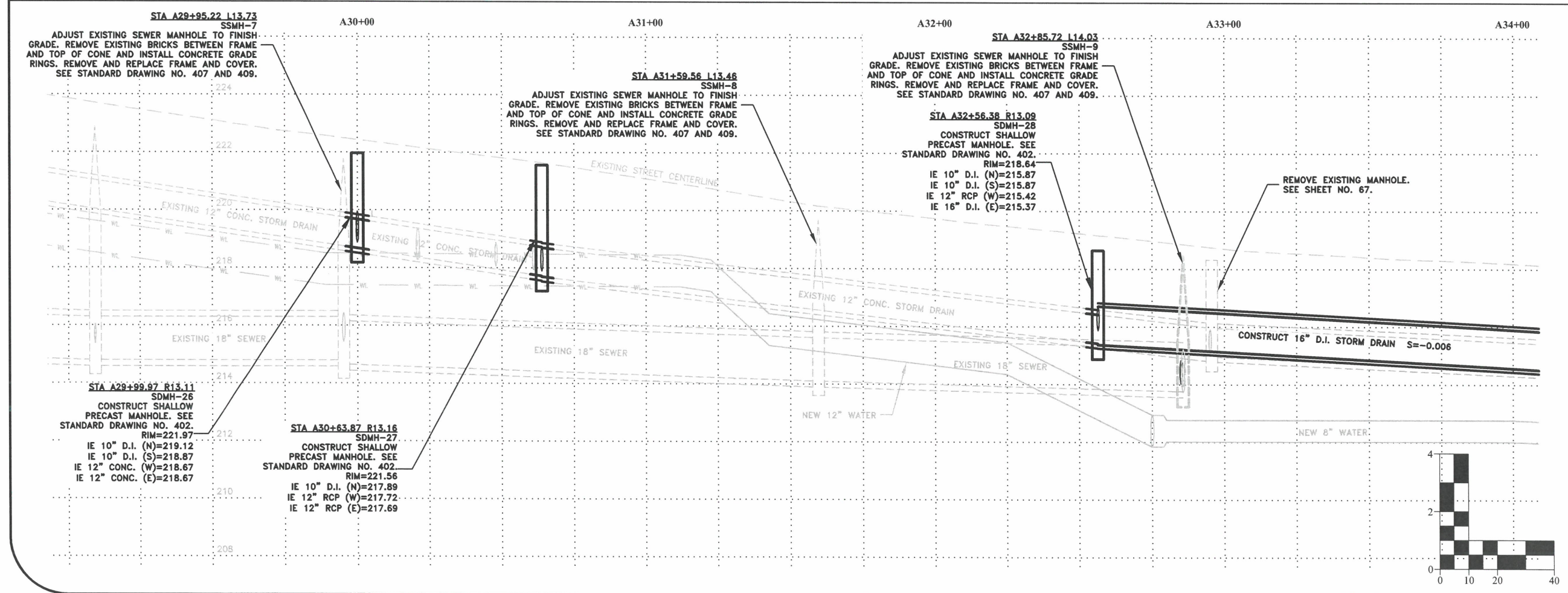
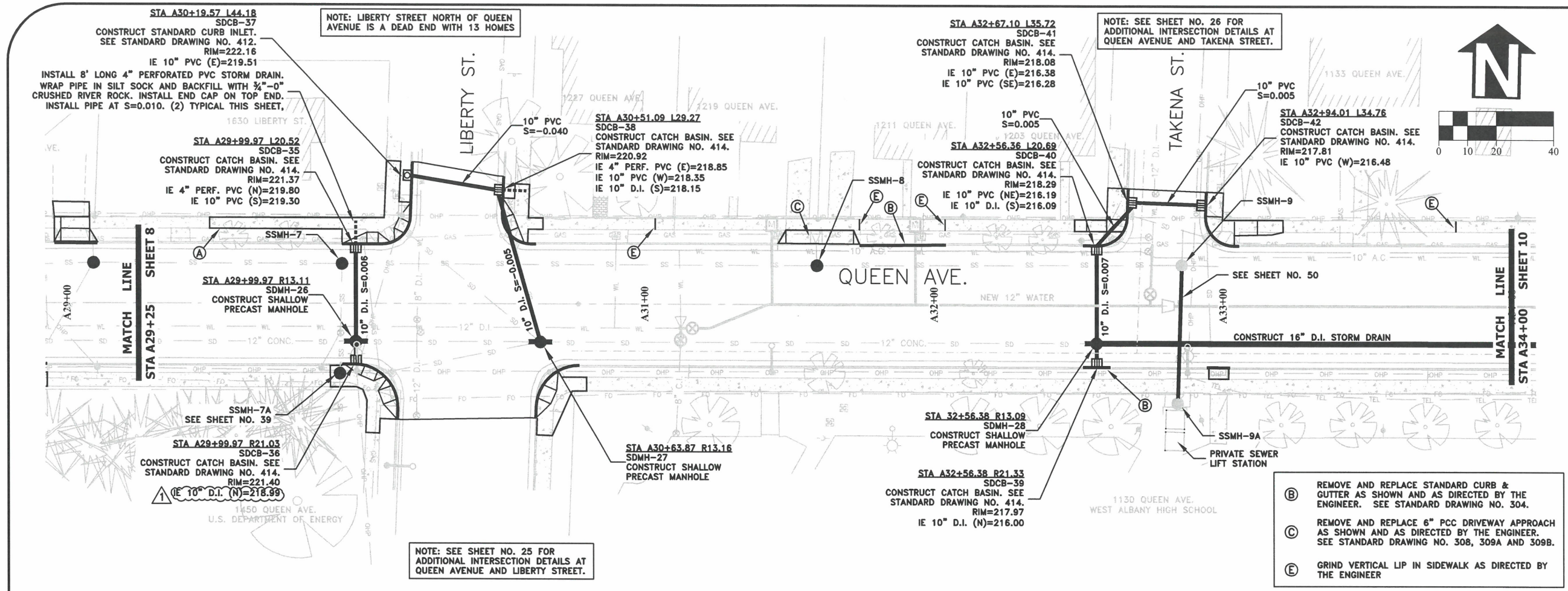


EXPIRATION DATE: 12/31/2023

SHEET NO. 86 OF 98

PROJECT NO: ST-22-01

FILE: BASE.DWG



DESIGNED: C. CERKLEWSKI	REVISIONS
DRAWN: C. CERKLEWSKI	NO:
CHECKED: S. BELCASTRO	BY:
DATE: 1/9/2023	ADDEND. 1
	DATE: 1/23/2023
	BY: C. CERKLEWSKI

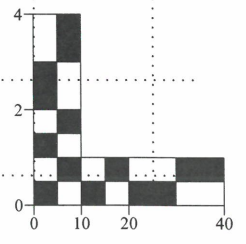
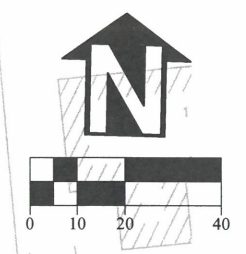
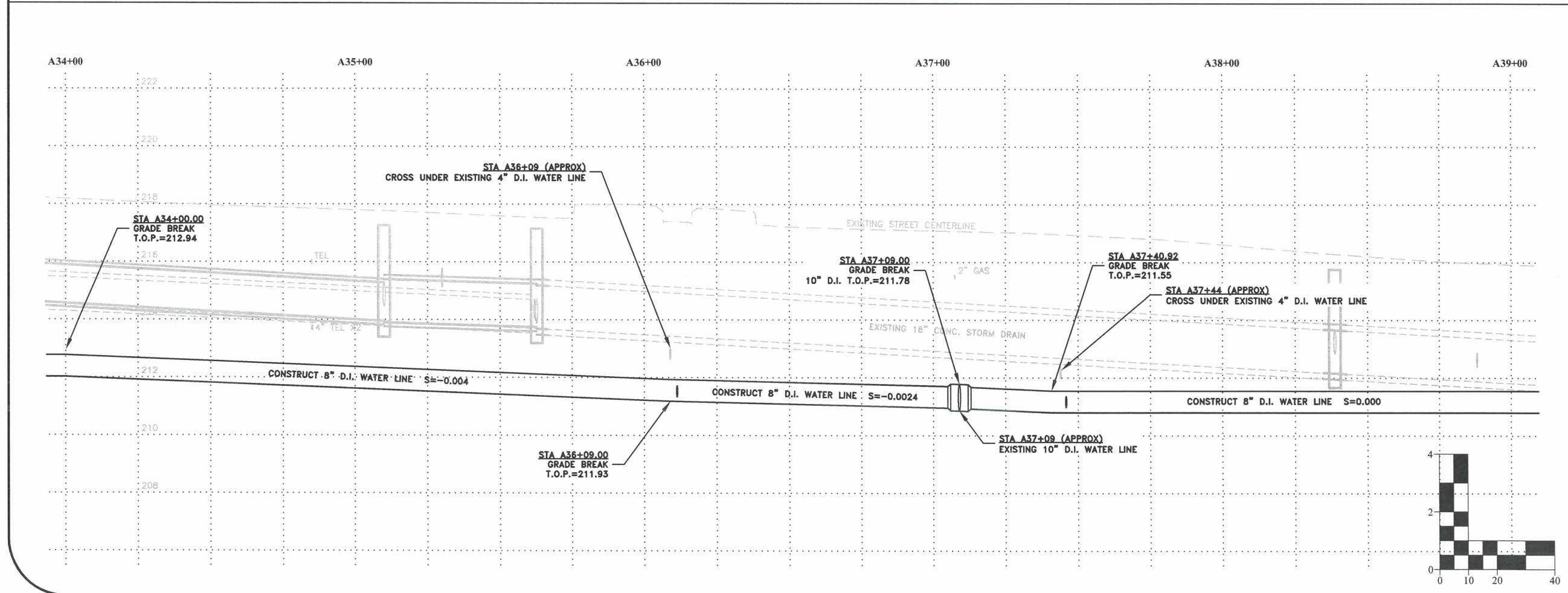
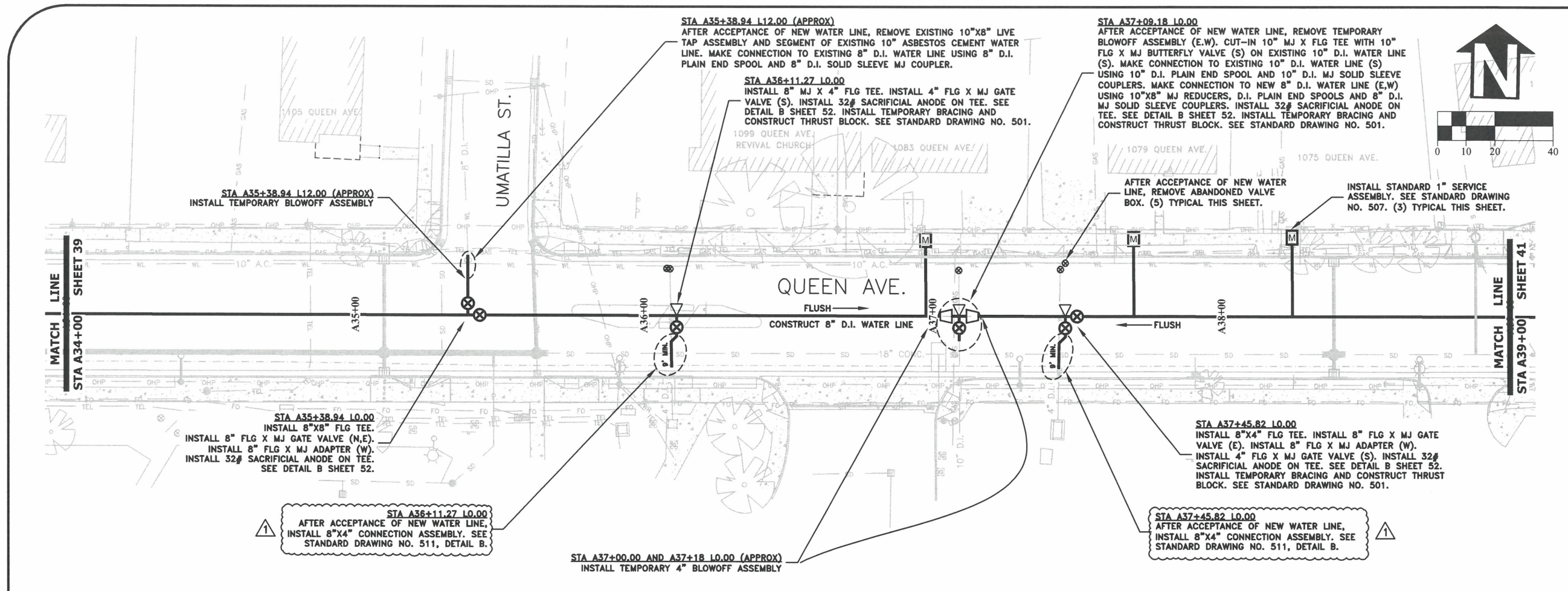
PUBLIC WORKS DEPARTMENT
ENGINEERING SERVICES

ST-22-01, QUEEN AVENUE REHABILITATION: CITY LIMITS TO PACIFIC BLVD.
QUEEN AVENUE STREET & STORM DRAIN CONSTRUCTION

REGISTERED PROFESSIONAL ENGINEER
 56,471PE
Christopher L. Cerkowski
 OREGON
 JULY 9, 2002
 CHRISTOPHER L. CERKLEWSKI

EXPIRATION DATE: 12/31/2023

SHEET NO. 9 OF 107
 PROJECT NO: ST-22-01
 FILE: BASE.DWG



DESIGNED: C. CERKLEWSKI	REVISIONS
DRAWN: C. CERKLEWSKI	NO: BY:
CHECKED: S. BELCASTRO	1/23/2023 ADDEND. 1 C. CERKLEWSKI
DATE: 1/9/2023	

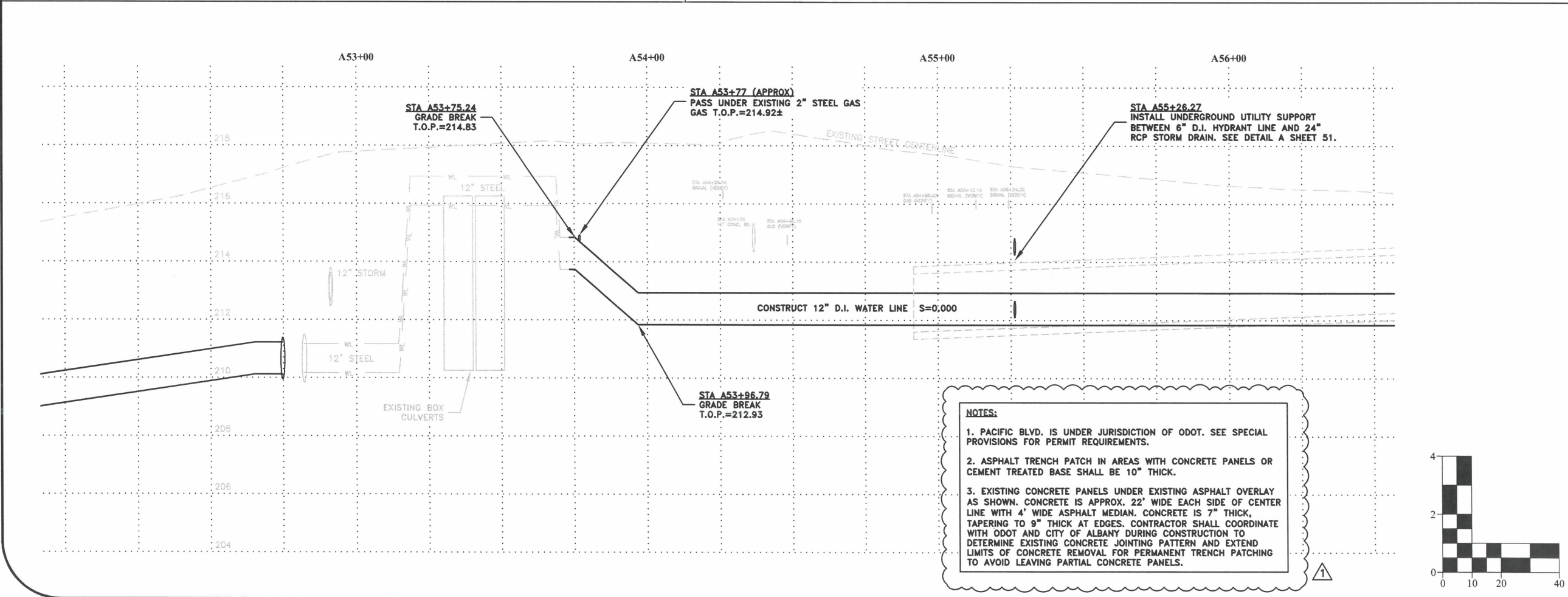
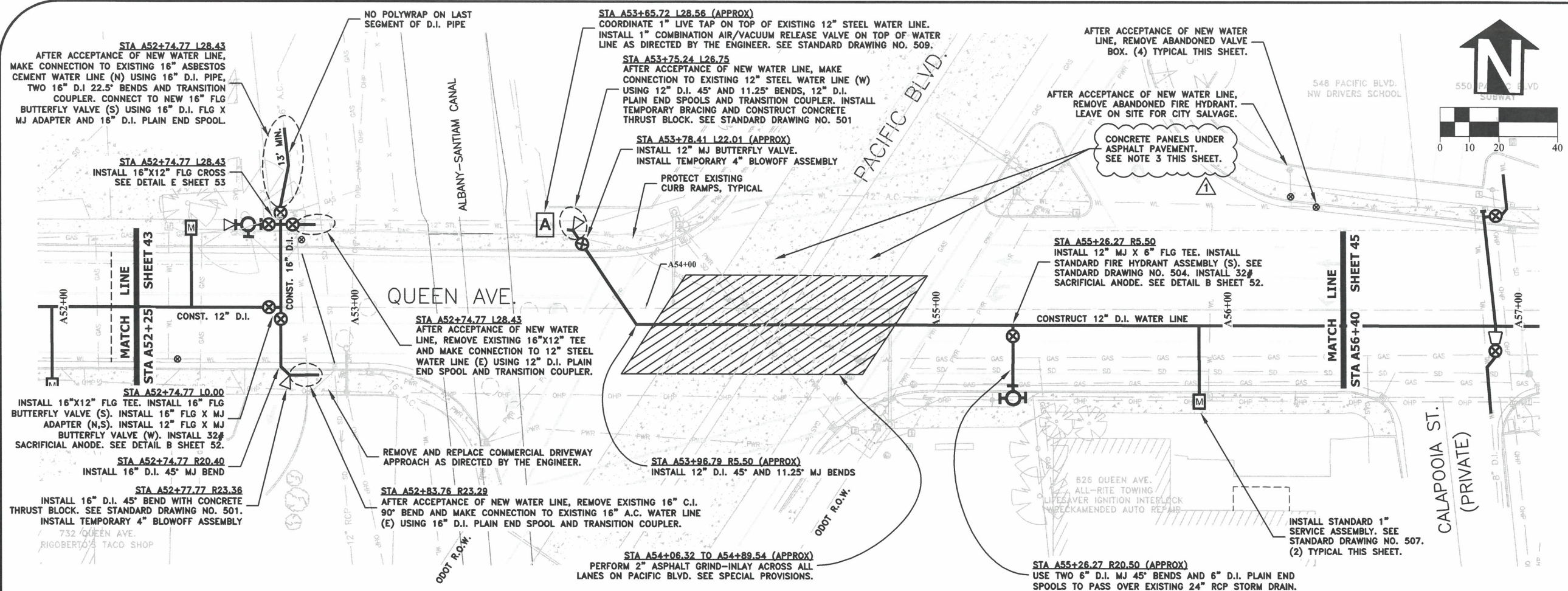
PUBLIC WORKS DEPARTMENT
ENGINEERING SERVICES

ST-22-01, QUEEN AVENUE REHABILITATION: CITY LIMITS TO PACIFIC BLVD.
QUEEN AVENUE WATER LINE CONSTRUCTION

REGISTERED PROFESSIONAL ENGINEER
56,471PE
Christopher L. Cerkowski
CHRISTOPHER L. CERKLEWSKI
OREGON
JULY 9, 2002

EXPIRATION DATE: 12/31/2023

SHEET NO. 40 OF 107
PROJECT NO: ST-22-01
FILE: BASE.DWG



DESIGNED: C. CERKLEWSKI	REVISIONS
DRAWN: C. CERKLEWSKI	NO: 1
CHECKED: S. BELCASTRO	BY: C. CERKLEWSKI
DATE: 1/9/2023	DATE: 1/23/2023
	ADDEN. 1

**PUBLIC WORKS DEPARTMENT
ENGINEERING SERVICES**

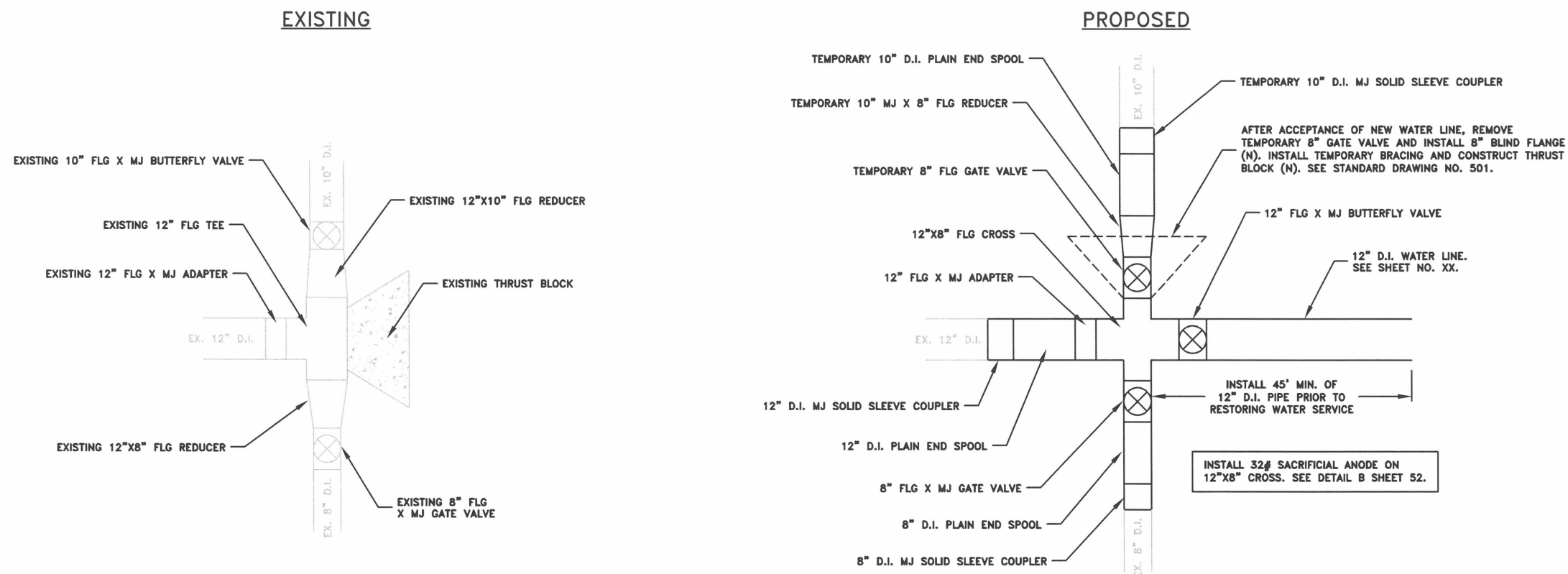
**ST-22-01, QUEEN AVENUE REHABILITATION: CITY LIMITS TO PACIFIC BLVD.
QUEEN AVENUE WATER LINE CONSTRUCTION**

REGISTERED PROFESSIONAL ENGINEER
56,471PE
OREGON
JULY 9, 2002
CHRISTOPHER L. CERKLEWSKI

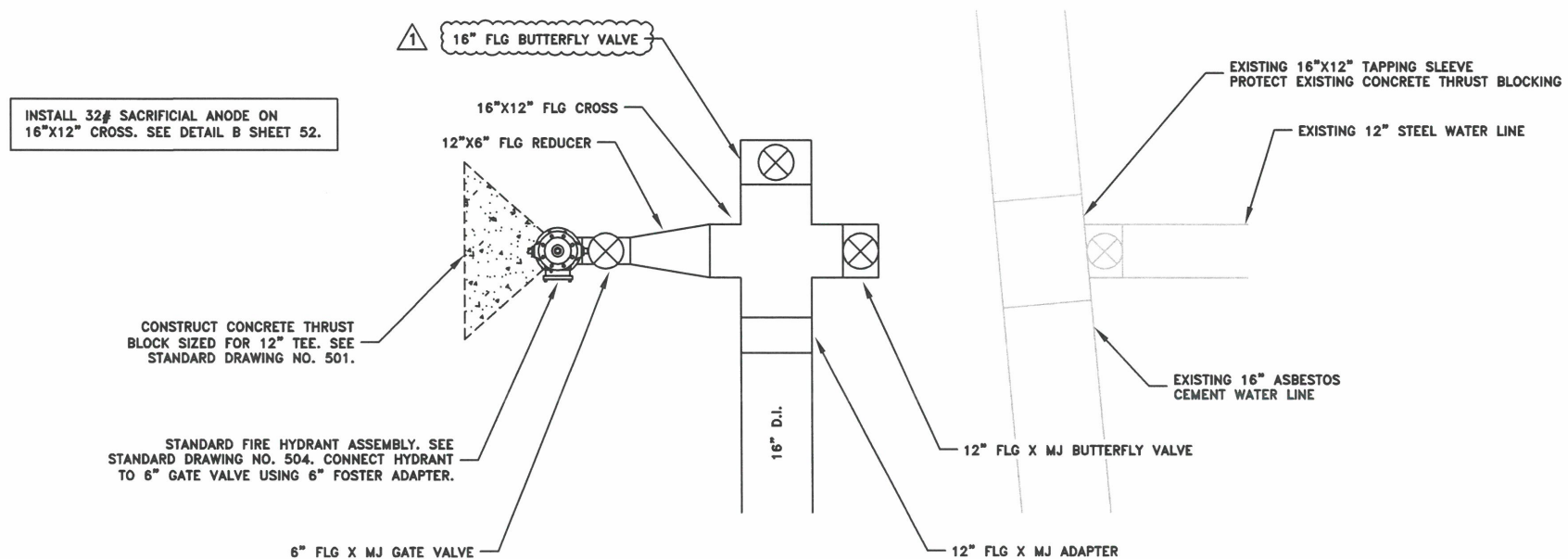
EXPIRATION DATE: 12/31/2023

SHEET NO. 44 OF 107
PROJECT NO: ST-22-01
FILE: BASE.DWG

**DETAIL D:
LIBERTY STREET WATER LINE CONNECTION DETAILS**
NOT TO SCALE



**DETAIL E:
16"X12" CROSS DETAIL**
NOT TO SCALE



DESIGNED: C. CERKLEWSKI	REVISIONS
DRAWN: C. CERKLEWSKI	NO:
CHECKED: S. BELCASTRO	ADDEND. 1
DATE: 1/9/2023	BY: C. CERKLEWSKI
	DATE: 1/23/2023

**PUBLIC WORKS DEPARTMENT
ENGINEERING SERVICES**

ST-22-01, QUEEN AVENUE REHABILITATION: CITY LIMITS TO PACIFIC BLVD.
WATER LINE DETAILS



EXPIRATION DATE: 12/31/2023

SHEET NO. 53 OF 107

PROJECT NO: ST-22-01

FILE: BASE.DWG