

# CITY OF ALBANY

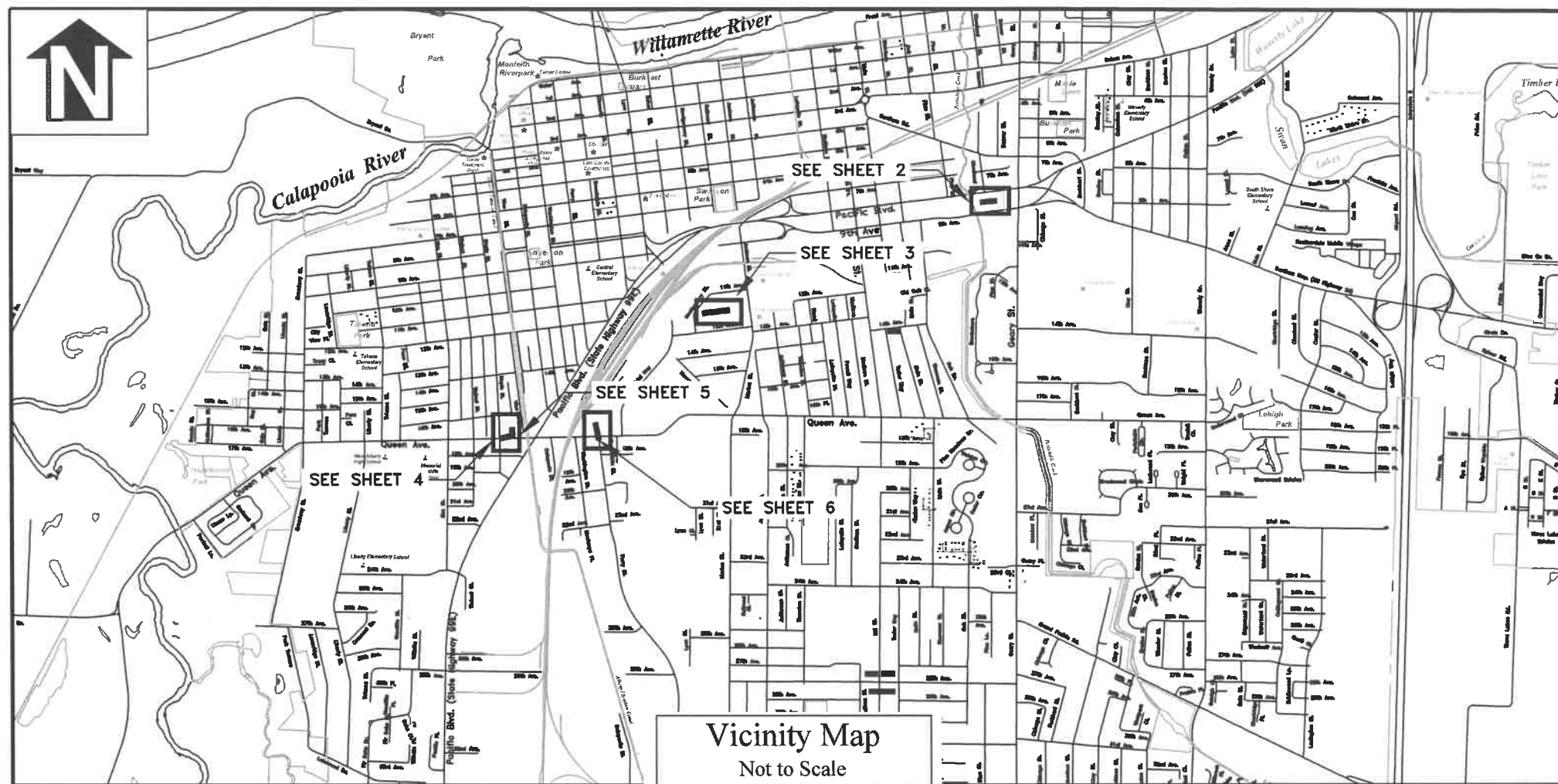
## SS-23-02, 2023 CURED-IN-PLACE PIPE PROJECT

### SHEET INDEX

- SHEET NO. 1, COVER
- SHEET NO. 2, PIPE 6382
- SHEET NO. 3, PIPE 6011
- SHEET NO. 4, PIPE 7290
- SHEET NO. 5, PIPE SW88044
- SHEET NO. 6, PIPE 6158

### LEGEND

●	EXISTING SEWER MANHOLE, DEAD END OR MAINLINE CLEANOUT CONNECTED TO SEGMENT BEING REHABILITATED
⊙	EXISTING SEWER MANHOLE, DEAD END OR MAINLINE CLEANOUT
—SS—	EXISTING SEWER LINE
○	EXISTING PRIVATE CLEANOUT
▬	CURED-IN-PLACE PIPE SEWER MAINLINE
■	EXISTING CATCH BASIN CONNECTED TO SEGMENT BEING REHABILITATED



### GENERAL NOTES

1. ALL CONSTRUCTION SHALL CONFORM TO THE CITY OF ALBANY STANDARD CONSTRUCTION SPECIFICATIONS AND ASSOCIATED STANDARD DRAWINGS. THE CURRENT VERSION OF THE CITY OF ALBANY STANDARD CONSTRUCTION SPECIFICATIONS CAN BE FOUND ON THE CITY'S WEBSITE AT [WWW.CITYOFALBANY.NET](http://WWW.CITYOFALBANY.NET).
2. UTILITIES SHOWN ARE FOR REFERENCE ONLY. FOR A FIELD LOCATE, CALL THE UTILITIES NOTIFICATIONS CENTER AT 1-800-332-2344.
3. OPERATING ACCESS FOR CITY MAINTENANCE PERSONNEL TO EXISTING MANHOLES SHALL BE CONTINUOUSLY MAINTAINED BY THE CONTRACTOR DURING ALL CONSTRUCTION ACTIVITIES.
4. CONTRACTOR SHALL VERIFY ALL EXISTING PIPE ELEVATIONS, PIPE DIAMETERS, AND PIPE MATERIALS AT CONNECTION AND ABANDONMENT LOCATIONS PRIOR TO CONSTRUCTION. ANY DISCREPANCIES SHALL BE REPORTED TO ENGINEER PRIOR TO BEGINNING WORK.
5. ATTENTION: OREGON LAW REQUIRES YOU TO FOLLOW RULES ADOPTED BY THE OREGON UTILITY NOTIFICATION CENTER. THOSE RULES ARE SET FORTH IN OAR 952-001-0010 THROUGH OAR 952-001-0090. YOU MAY OBTAIN COPIES OF THE RULES BY CALLING THE CENTER. (NOTE: THE TELEPHONE NUMBER FOR THE OREGON UTILITY NOTIFICATION CENTER IS (503) 232-1987).
6. CONTRACTOR SHALL BE RESPONSIBLE FOR PROPER INSTALLATION AND MAINTENANCE OF ALL EROSION PREVENTION SEDIMENT CONTROL (EPSC) MEASURES IN ACCORDANCE WITH LOCAL, STATE, AND FEDERAL REGULATIONS UNTIL ALL CONSTRUCTION IS COMPLETED AND APPROVED BY THE CITY OF ALBANY, AND VEGETATION/LANDSCAPING IS ESTABLISHED. FOR GUIDANCE, REFER TO THE CITY OF ALBANY EPSC MANUAL WHICH CAN BE FOUND AT [WWW.CITYOFALBANY.NET](http://WWW.CITYOFALBANY.NET).
7. ALL SEWER MAINS SHALL BE REHABILITATED USING CURED-IN-PLACE PIPE. SEE SPECIAL PROVISIONS.

SCALE VARIES ON  
INDIVIDUAL SHEETS

DESIGNED: N. NELSON	DRAWN: N. NELSON	CHECKED: C. CERKLEWSKI	DATE: 3/7/2023
REVISIONS	NO:	DATE:	BY:

PUBLIC WORKS DEPARTMENT  
ENGINEERING SERVICES

SS-23-02, 2023 CURED-IN-PLACE PIPE PROJECT

REGISTERED PROFESSIONAL ENGINEER  
82577PE  
NOLAN J. NELSON  
OREGON  
JUNE 29, 2009

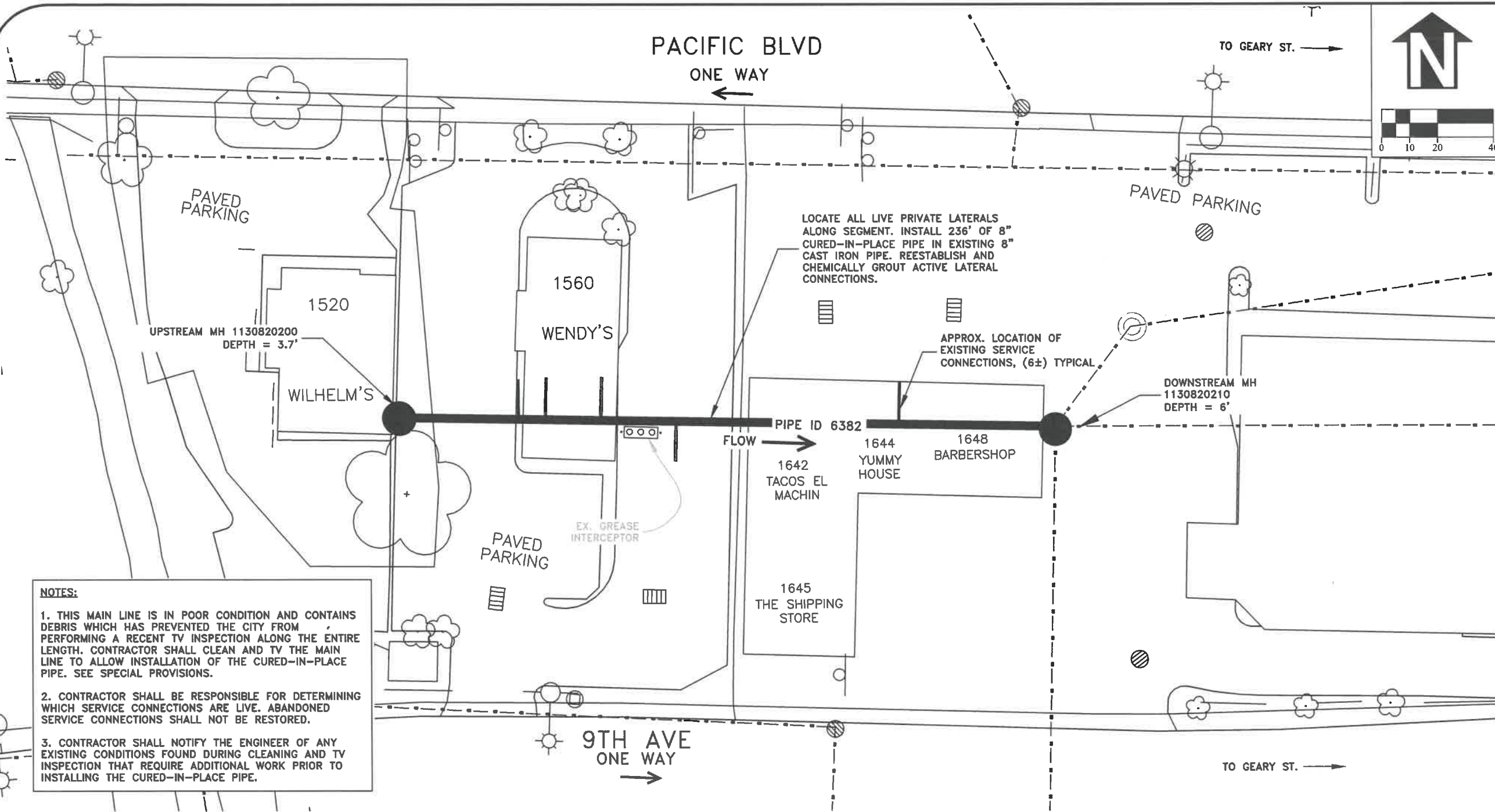
EXPIRATION DATE: 12/31/2024

SHEET NO. 1 OF 6

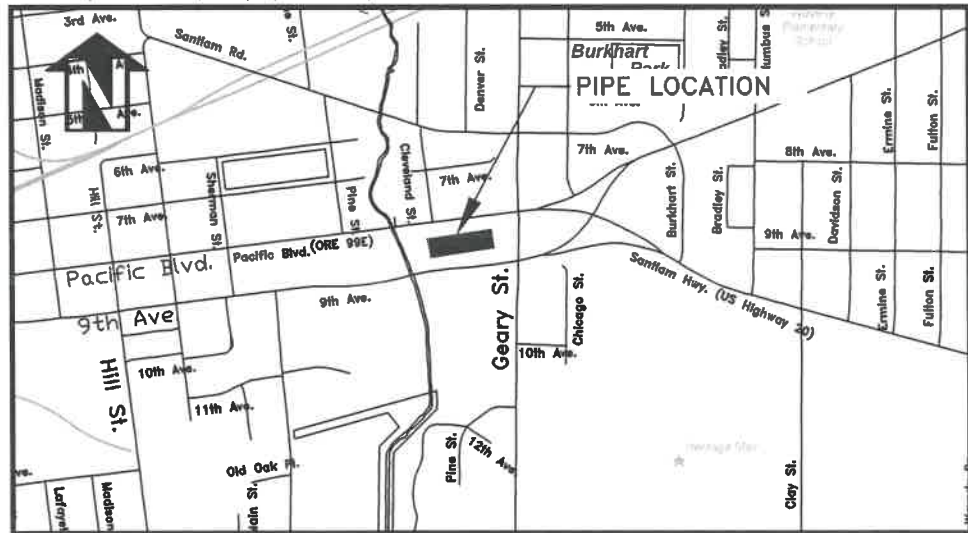
PROJECT NO: SS-23-02

FILE: FILENAME.DWG





- NOTES:**
1. THIS MAIN LINE IS IN POOR CONDITION AND CONTAINS DEBRIS WHICH HAS PREVENTED THE CITY FROM PERFORMING A RECENT TV INSPECTION ALONG THE ENTIRE LENGTH. CONTRACTOR SHALL CLEAN AND TV THE MAIN LINE TO ALLOW INSTALLATION OF THE CURED-IN-PLACE PIPE. SEE SPECIAL PROVISIONS.
  2. CONTRACTOR SHALL BE RESPONSIBLE FOR DETERMINING WHICH SERVICE CONNECTIONS ARE LIVE. ABANDONED SERVICE CONNECTIONS SHALL NOT BE RESTORED.
  3. CONTRACTOR SHALL NOTIFY THE ENGINEER OF ANY EXISTING CONDITIONS FOUND DURING CLEANING AND TV INSPECTION THAT REQUIRE ADDITIONAL WORK PRIOR TO INSTALLING THE CURED-IN-PLACE PIPE.



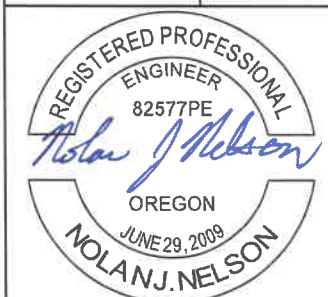
EXISTING PIPE SEGMENT SUMMARY	
PIPE ID	6382
PIPE DIAMETER AND MATERIAL	8" CAST
UPSTREAM MH ID	1130820200
DOWNSTREAM MH ID	1130820210
TOTAL LENGTH (FT)	236
ESTIMATED NUMBER OF CONNECTED LATERALS	5

PIPE NOTES FROM UPSTREAM MH CONTRACTOR TO VERIFY	
FOOTAGE	DESCRIPTION
42.5	LATERAL
52.7	LATERAL
72.7	LATERAL
100.5	LATERAL
110	CAMERA OBSTRUCTION
175	LATERAL
215	PIPE MISSING BOTTOM

DESIGNED: N. NELSON	REVISIONS
DRAWN: N. NELSON	NO: ---
CHECKED: C. CERKLEWSKI	BY: ---
DATE: 3/7/2023	DATE: ---

**PUBLIC WORKS DEPARTMENT**  
**ENGINEERING SERVICES**

**SS-23-02, 2023 CURED-IN-PLACE PIPE PROJECT**  
PIPE 6382



EXPIRATION DATE: 12/31/2024

SHEET NO. 2 OF 6

PROJECT NO: SS-23-02

FILE: BASE.DWG

245

MONTGOMERY ST

DOWNSTREAM  
MH1130721340  
DEPTH = 16.1'

LOCATE ALL LIVE PRIVATE LATERALS ALONG  
SEGMENT. INSTALL 380' OF CURED-IN-PLACE  
PIPE IN EXISTING 8" SEWER MAIN. REESTABLISH  
AND CHEMICALLY GROUT ACTIVE LATERAL  
CONNECTIONS.

235 13th

UPSTREAM MH  
1130710930  
DEPTH = 11.4'

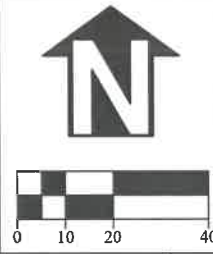
PIPE ID 6011

FLOW →

GAPS SCHOOL  
BUS BARN

PAVED PARKING

1247 MONTGOMERY  
PACIFIC POWER  
YARD

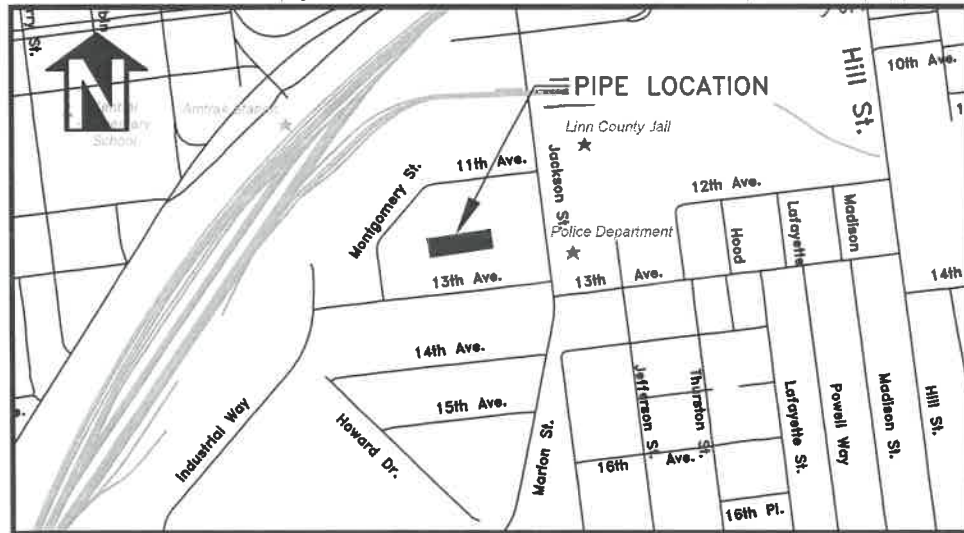


DESIGNED: N. NELSON	REVISIONS
DRAWN: N. NELSON	NO: ---
CHECKED: C. CERKLEWSKI	BY: ---
DATE: 3/7/2023	DATE: ---

PUBLIC WORKS DEPARTMENT  
ENGINEERING SERVICES



SS-23-02, 2023 CURED-IN-PLACE PIPE PROJECT  
PIPE 6011



VICINITY MAP

EXISTING PIPE SEGMENT SUMMARY

PIPE ID	6011
PIPE DIAMETER AND MATERIAL	8" CAST/CP
UPSTREAM MH ID	1130710930
DOWNSTREAM MH ID	1130721340
TOTAL LENGTH (FT)	380
ESTIMATED NUMBER OF CONNECTED LATERALS	3

PIPE NOTES FROM DOWNSTREAM MH  
CONTRACTOR TO VERIFY

FOOTAGE	DESCRIPTION
70	LATERAL
74	CONCRETE TO CAST
108	LATERAL
173	CAST TO CONCRETE
216	CAPPED TEE
219	CAPPED TEE
364	CAPPED TEE
367	LATERAL
376	LATERAL



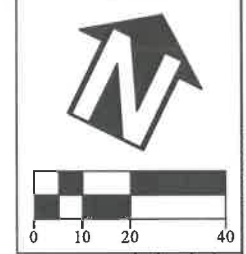
EXPIRATION DATE: 12/31/2024  
SHEET NO. 3 OF 6  
PROJECT NO: SS-23-02  
FILE: BASE.DWG



MAPLE ST.

DOWNSTREAM  
MH1141241295  
DEPTH = 6.2'

LOCATE ALL LIVE PRIVATE LATERALS ALONG  
SEGMENT. INSTALL 140' OF CURED-IN-PLACE  
PIPE IN EXISTING 8" SEWER MAIN. REESTABLISH  
AND CHEMICALLY GROUT ACTIVE LATERAL  
CONNECTIONS.



DESIGNED: N. NELSON	REVISIONS
DRAWN: N. NELSON	NO: ---
CHECKED: C. CERKLEWSKI	BY: ---
DATE: 3/7/2023	DATE: ---

SEE SHEET NO. 5

FLOW ↑

PIPE ID 7290

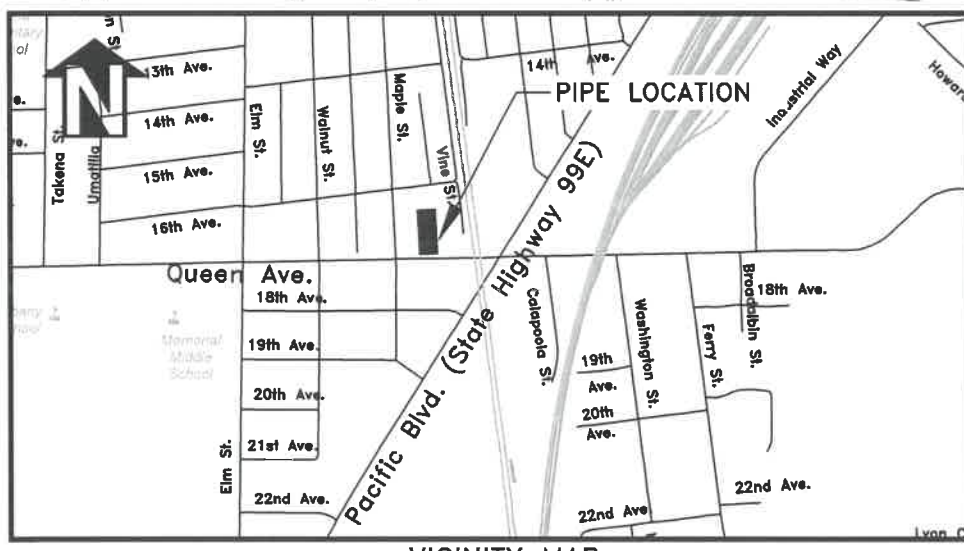
UPSTREAM  
MH1141240860  
DEPTH = 5'

QUEEN AVE

PUBLIC WORKS DEPARTMENT  
ENGINEERING SERVICES



SS-23-02, 2023 CURED-IN-PLACE PIPE PROJECT  
PIPE 7290



VICINITY MAP

EXISTING PIPE SEGMENT SUMMARY

PIPE ID	7290
PIPE DIAMETER AND MATERIAL	8" VCP
UPSTREAM MH ID	1141240860
DOWNSTREAM MH ID	1141241295
TOTAL LENGTH (FT)	140
ESTIMATED NUMBER OF CONNECTED LATERALS	3

PIPE NOTES FROM UPSTREAM MH  
CONTRACTOR TO VERIFY

FOOTAGE	DESCRIPTION
104	LATERAL
117	LATERAL
138	VCP TO PVC
139	LATERAL

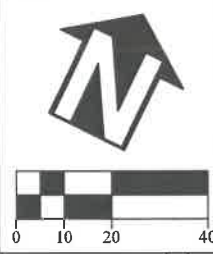
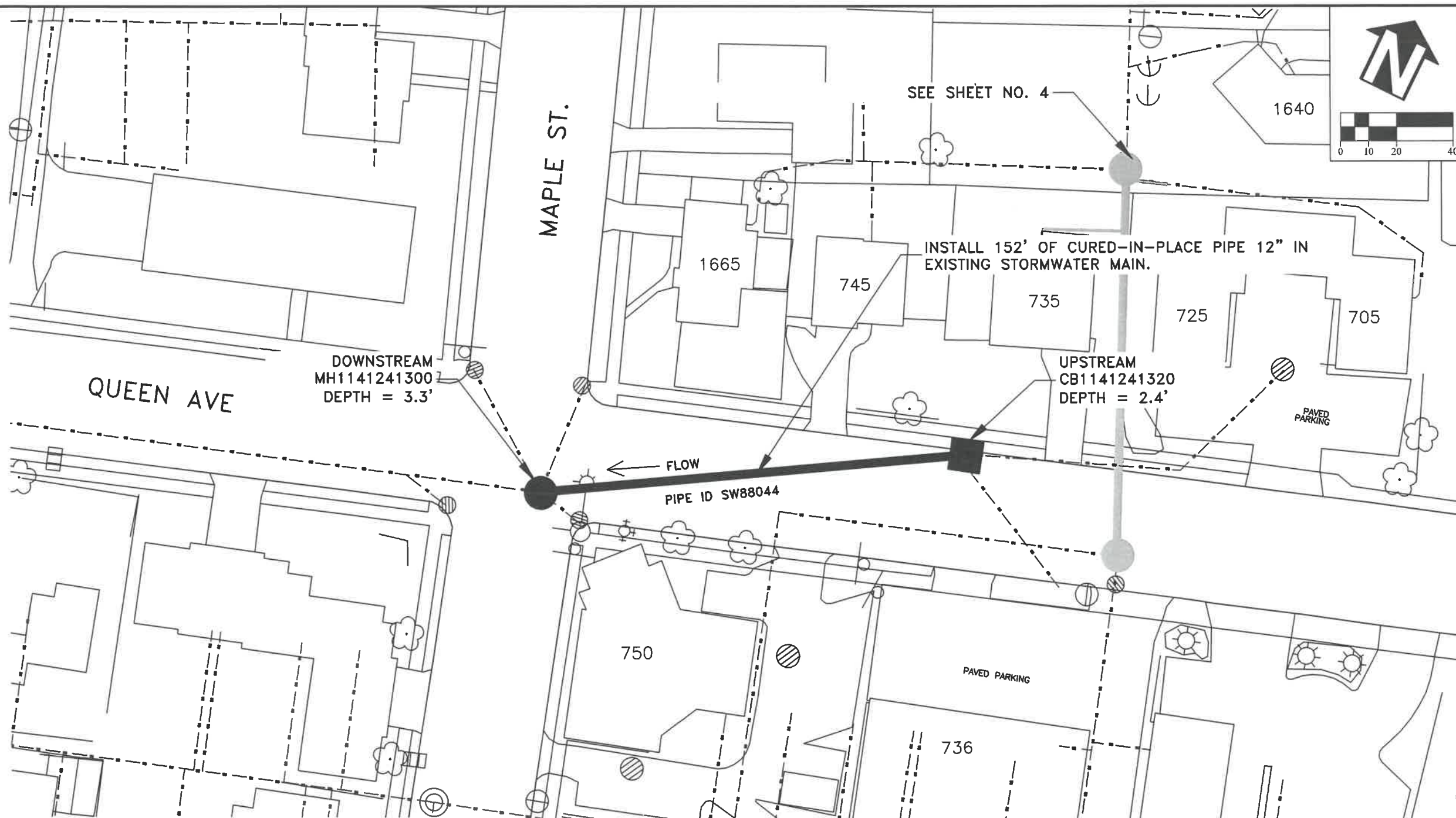


EXPIRATION DATE: 12/31/2024

SHEET NO. 4 OF 6

PROJECT NO: SS-23-02

FILE: BASE.DWG

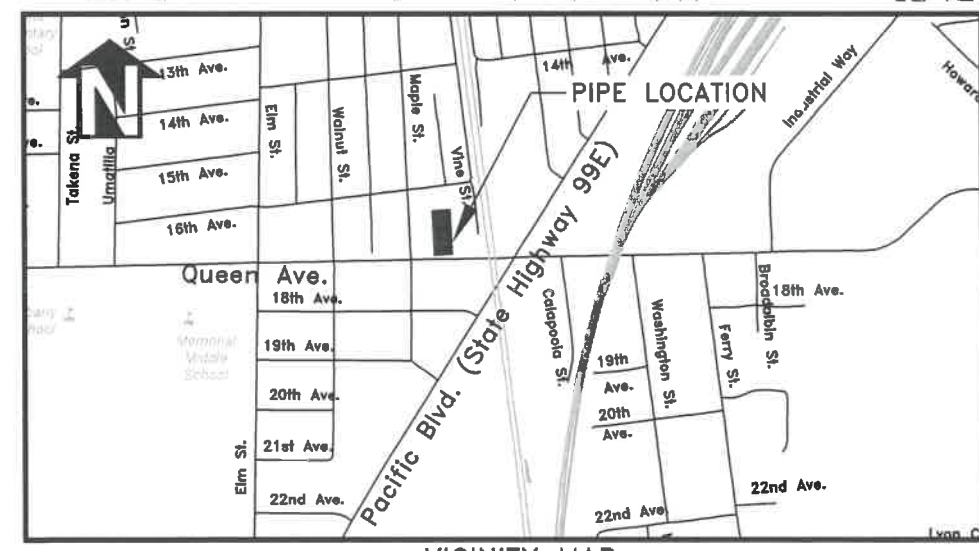


DESIGNED: N. NELSON	REVISIONS
DRAWN: N. NELSON	NO: --
CHECKED: C. CERKLEWSKI	BY: --
DATE: 3/7/2023	DATE: --

**PUBLIC WORKS DEPARTMENT  
ENGINEERING SERVICES**



**SS-23-02, 2023 CURED-IN-PLACE PIPE PROJECT  
PIPE SW88044**



VICINITY MAP

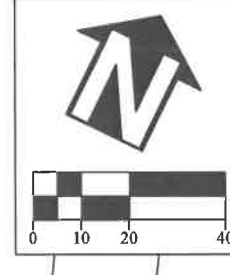
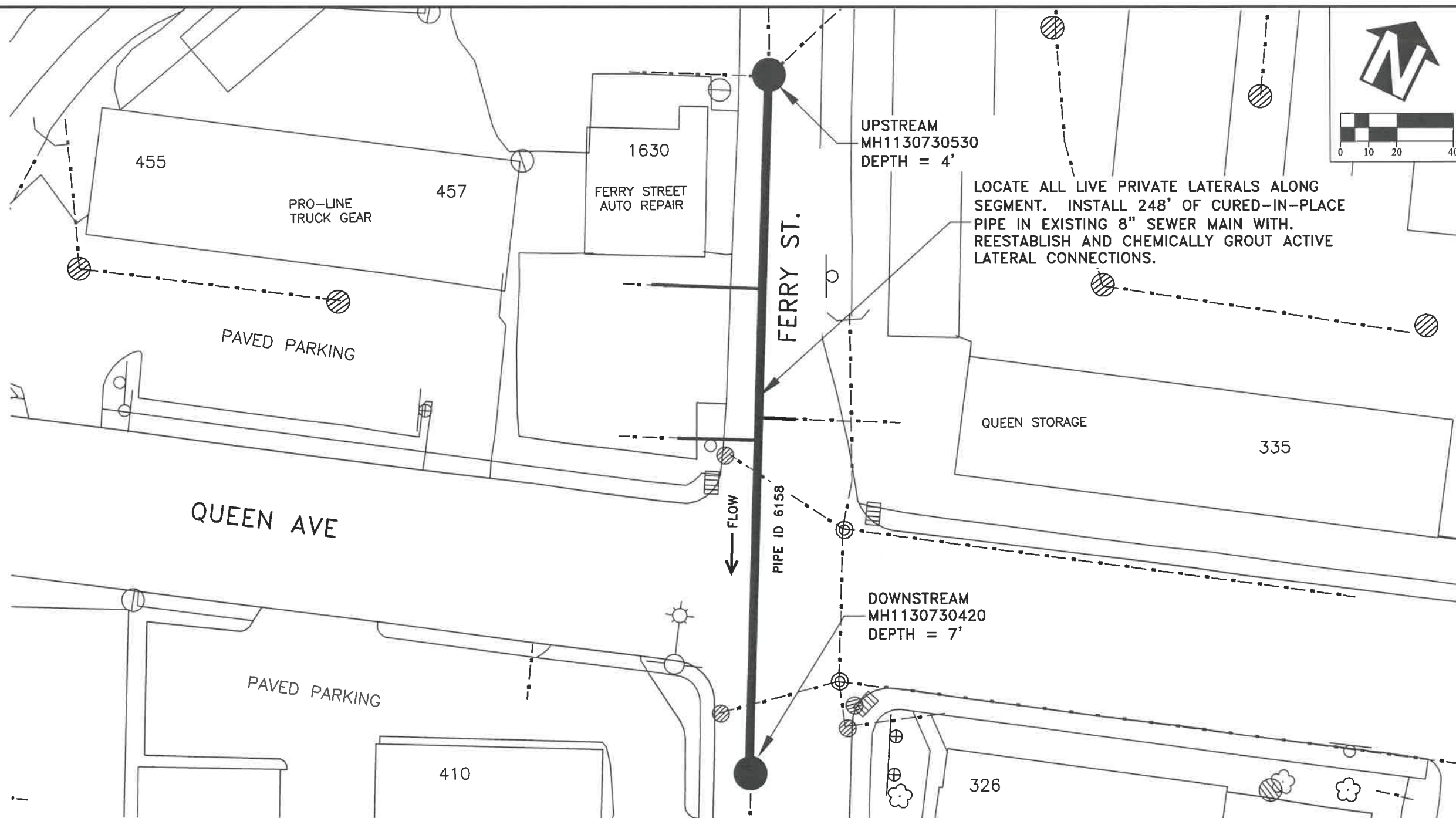
EXISTING PIPE SEGMENT SUMMARY	
PIPE ID	SW88044
PIPE DIAMETER AND MATERIAL	12" RCP
UPSTREAM CB ID	1141241320
DOWNSTREAM MH ID	1141241300
TOTAL LENGTH (FT)	152
ESTIMATED NUMBER OF CONNECTED LATERALS	0



EXPIRATION DATE: 12/31/2024

SHEET NO.	5 OF 6
PROJECT NO:	SS-23-02
FILE:	BASE.DWG



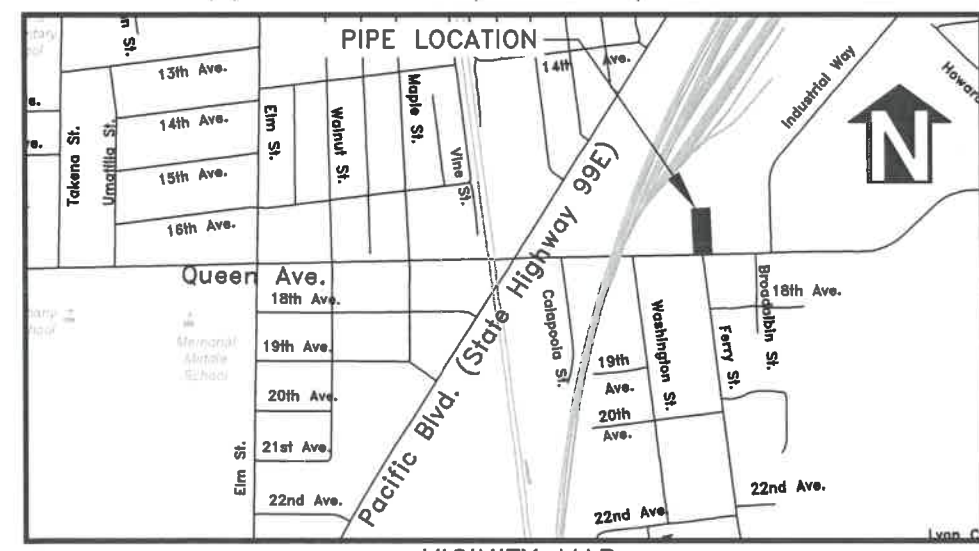


DESIGNED: N. NELSON	REVISIONS
DRAWN: N. NELSON	NO: --
CHECKED: C. CERKLEWSKI	DATE: --
DATE: 3/7/2023	BY: --

**PUBLIC WORKS DEPARTMENT**  
**ENGINEERING SERVICES**



**SS-23-02, 2023 CURED-IN-PLACE PIPE PROJECT**  
**PIPE 6158**



VICINITY MAP

EXISTING PIPE SEGMENT SUMMARY	
PIPE ID	6158
PIPE DIAMETER AND MATERIAL	8" CP
UPSTREAM MH ID	1130730530
DOWNSTREAM MH ID	1130730420
TOTAL LENGTH (FT)	248
ESTIMATED NUMBER OF CONNECTED LATERALS	3

PIPE NOTES FROM UPSTREAM MH CONTRACTOR TO VERIFY	
FOOTAGE	DESCRIPTION
81	LATERAL
128	LATERAL
135.5	LATERAL



EXPIRATION DATE: 12/31/2024

SHEET NO. 6 OF 6  
PROJECT NO: SS-23-02  
FILE: BASE.DWG