

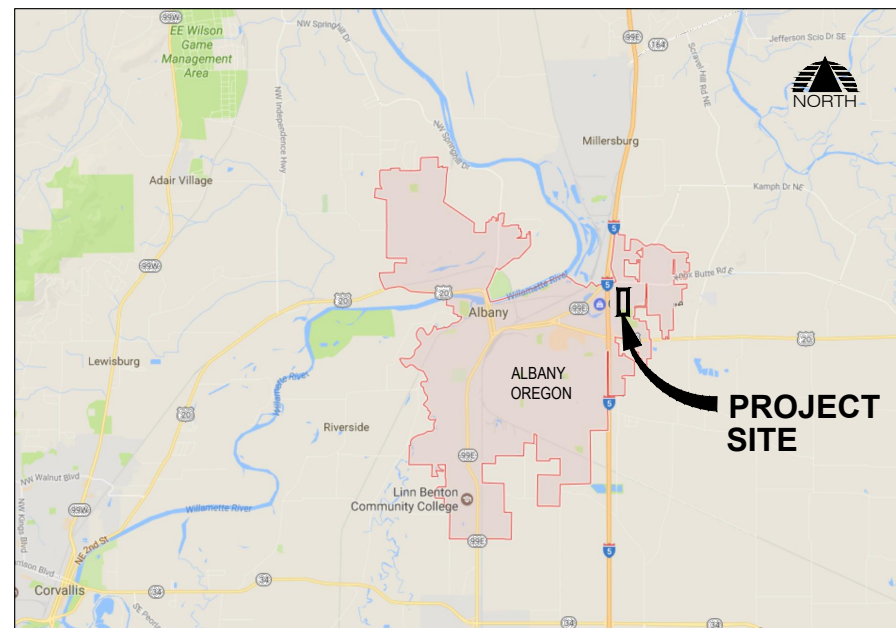
CITY OF ALBANY

ALBANY MUNICIPAL AIRPORT

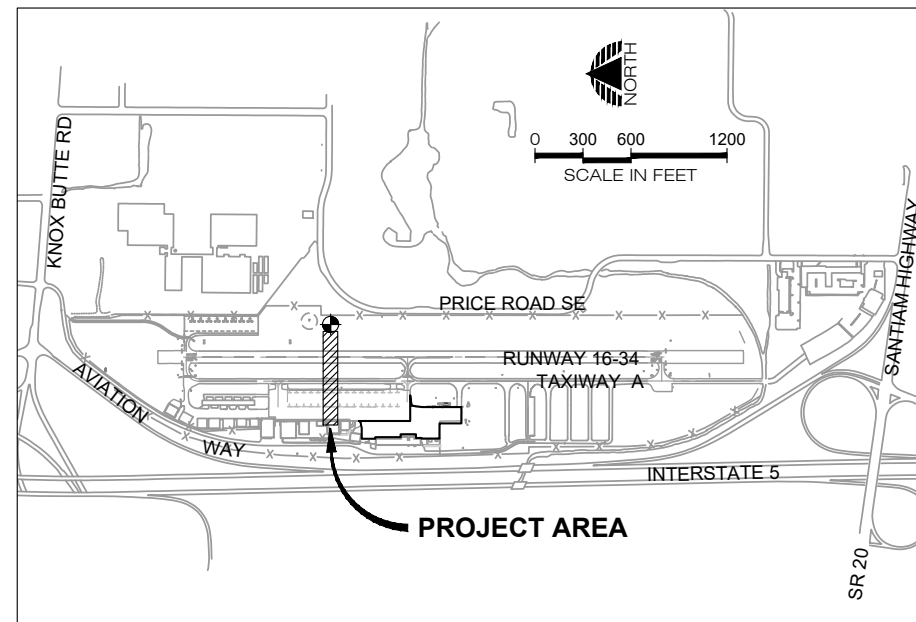
AWOS-III P/T IMPROVEMENTS

AIP NO. 3-41-0001-017-2021

VICINITY MAP



PROJECT MAP



INDEX TO DRAWINGS

- 1 COVER SHEET
- 2 LEGEND AND BID SCHEDULE
- 3 SITE PLAN
- 4 CONSTRUCTION PLAN - PROJECT SPECIFIC CRITICAL AREAS
- 5 CONSTRUCTION PLAN - PHASE 1
- 6 CONSTRUCTION PLAN - PHASE 2
- 7 CONSTRUCTION PLAN GENERAL NOTES AND DETAILS
- 8 AWOS LAYOUT PLAN
- 9 AWOS INSTALLATION DETAILS
- 10 ELECTRICAL DETAILS
- 11 ELECTRICAL DETAILS
- 12 ELECTRICAL DETAILS

03/11/21 - 1:46pm - JWade - P:\Alab006_aws01040CAD\DWG\Sheets\ALB006-Cover.dwg

NOTE:
THIS DRAWING IS INTENDED TO BE PRINTED IN COLOR.
PRINTING IN BLACK AND WHITE MAY REDUCE READABILITY
AND ALTER ENTITY DEFINITION OR REPRESENTATION.

PRECISION APPROACH
ENGINEERING
5125 Southwest Hout Street
Corvallis, OR 97333
541•754•0043



REVISIONS:	DATE	APPD.

DATE: MAR 2021
DESIGN: GWV
DRAWN: JAW
CHECKED: GWV
REVISION NUMBER: 0
SCALE: AS SHOWN

ALBANY MUNICIPAL AIRPORT
AWOS-III P/T IMPROVEMENTS
COVER SHEET
PRECISION APPROACH ENGINEERING, INC.
AIP NO. 3-41-0001-017-2021

PROJECT NUMBER:
ALB006
SHEET NO.
1
OF **12**

BASE BID SCHEDULE

BID ITEM NUMBER	DESCRIPTION	UNIT	ESTIMATED QUANTITY	CONSTRUCTION QUANTITY
1	CONSTRUCTION SURVEY AND STAKING	LS	1	
2	TEMPORARY EROSION CONTROL	LS	1	
3	MOBILIZATION	LS	1	
4	DEMOLITION	LS	1	
5	AWOS-III P/T	LS	1	
6	WIND DIRECTION MONUMENTATION	LS	1	
7	GEOTEXTILE FABRIC	SY	140	
8	CRUSHED AGGREGATE BASE	SY	140	
9	NO. 8 AWG, 5KV, L-824C CABLE	LF	2,090	
10	AWOS POWER SUPPLY	LS	1	
11	ELECTRICAL TRENCH, NON-PAVED	LF	220	
12	2-INCH PVC CONDUIT	LF	200	
13	3-INCH PVC CONDUIT	LF	40	
14	ELECTRICAL HANDHOLE	EA	2	

LEGEND

CIVIL SYMBOLS LEGEND

EXISTING	NEW	
		EDGE OF PAVEMENT
		EDGE OF GRAVEL
		CONTOUR
		DITCH FLOW LINE
		FENCE
		STORM DRAIN
		UNDER DRAIN
		CULVERT
		SANITARY SEWER
		WATER
		GAS
		TELEPHONE
		IRRIGATION
		SLOPE SYMBOL
		CATCH BASIN
		STORM DRAIN MANHOLE
		CLEANOUT
		CULVERT END STRUCTURE
		SURFACE FLOW DIRECTION
		SANITARY MANHOLE
		FIRE HYDRANT
		WATER METER
		WATER VAULT
		WATER VALVE
		IRRIGATION VALVE
		TIE DOWN
		SIGN
		SURVEY CONTROL POINT
		SURVEY FOUND MONUMENT
		BRASS CAP
		BENCHMARK
		AIRPORT BEACON
		SHRUBS
		TREES
		ABANDONED FEATURE LINE
		DEMO FEATURE LINES

ELECTRICAL LEGEND

EXISTING	NEW	
		HANDHOLE
		POWER VAULT
		DUCT MARKER
		JUNCTION CAN
		ELECTRICAL RISER
		RUNWAY EDGE LIGHT AND THRESHOLD LIGHT C = CLEAR R = RED G = GREEN Y = YELLOW O = OPAQUE
		RUNWAY LIGHT IN PAVEMENT (FLUSH MOUNT)
		REIL (RUNWAY END IDENTIFIER LIGHT)
		PAPI (PRECISION APPROACH PATH INDICATOR)
		TAXIWAY LIGHT (BLUE LENS)
		TAXIWAY LIGHT IN PAVEMENT (FLUSH MOUNT)
		RETROREFLECTIVE MARKER
		POWER CIRCUIT / OVERHEAD
		POWER UNDERGROUND
		POWER POLE
		GUY WIRE
		STREET LIGHT
		GUIDANCE SIGN

03/11/21 - 1:46pm - J\Wade - J\Wade - P:\Alab006_aws0400CAD\DWG\Sheets\ALB006-Cover.dwg

PRECISION APPROACH ENGINEERING
 5125 Southwest Hout Street
 Corvallis, OR 97333
 541•754•0043



REVISIONS:	DATE	APPD.

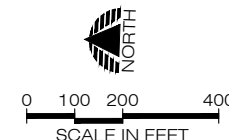
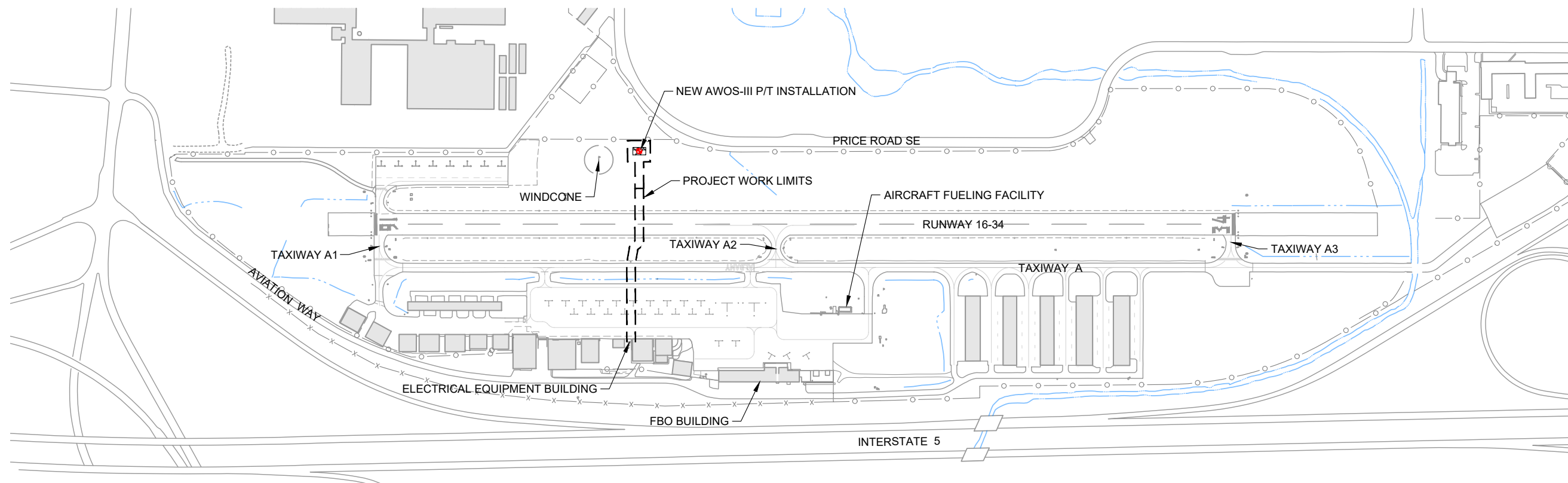
DATE:	MAR 2021
DESIGN:	GWV
DRAWN:	JAW
CHECKED:	GWV
REVISION NUMBER:	0
SCALE:	AS SHOWN

ALBANY MUNICIPAL AIRPORT
 AWOS-III P/T IMPROVEMENTS

LEGEND AND BID SCHEDULE

PRECISION APPROACH ENGINEERING, INC.
 AIP NO. 3-41-0001-017-2021

PROJECT NUMBER:	ALB006
SHEET NO.	2
OF	12



EROSION AND SEDIMENT CONTROL NOTES:

- BEST MANAGEMENT PRACTICES (BMPs) FOR TEMPORARY EROSION AND SEDIMENT CONTROL SHALL BE IMPLEMENTED AND MAINTAINED UNTIL SITE IS STABILIZED.
- THE CONTRACTOR IS RESPONSIBLE FOR ALL MEASURES REQUIRED BY THE CONTRACTORS MEANS AND METHODS OF CONSTRUCTION TO CONTROL EROSION AND SEDIMENT AT THE CONSTRUCTION SITE. IT IS THE CONTRACTORS RESPONSIBILITY TO PREVENT A VIOLATION OF SURFACE WATER QUALITY, GROUND WATER QUALITY, OR SEDIMENT MANAGEMENT STANDARDS. THE CONTRACTOR SHALL COMPLY WITH ALL APPLICABLE FEDERAL, STATE, AND LOCAL LAWS, ORDINANCES AND STANDARDS.
- PUBLIC RIGHT-OF-WAY AND AIRCRAFT OPERATIONS AREAS SHALL BE KEPT IN A CLEAN AND SERVICEABLE CONDITION AT ALL TIMES. IN THE EVENT MATERIALS ARE INADVERTENTLY DEPOSITED ON ROADWAYS, TAXIWAYS, TAXILANES OR APRONS THE MATERIAL SHALL BE PROMPTLY REMOVED.
- CONTRACTOR SHALL USE ALL MEANS NECESSARY TO MINIMIZE DUST DURING CONSTRUCTION. IF THE ENGINEER REQUESTS DUST CONTROL, THE CONTRACTOR SHALL COMPLY IMMEDIATELY.
- THE CONTRACTOR SHALL HAVE SWEEPING OR VACUUMING CAPABILITIES IN ORDER TO REMOVE DEBRIS FROM ACTIVE OPERATIONAL AREAS. MATERIALS TRACKED ONTO THESE AREAS MUST BE CONTINUOUSLY REMOVED DURING THE PROJECT.
- CONTRACTOR SHALL INSTALL AGGREGATE CONSTRUCTION ENTRANCE AND CONCRETE WASHOUT FACILITY, VERIFY LOCATION WITH ENGINEER PRIOR TO INSTALLATION.
- SEED AND MULCH ANY AREAS DISTURBED BY CONSTRUCTION ACTIVITIES. ALL SEEDING AND MULCHING COSTS SHALL BE PAID FOR UNDER THE TEMPORARY EROSION CONTROL BID ITEM. CONTRACTOR SHALL PROVIDE SEED MIX TO ENGINEER FOR REVIEW AND APPROVAL PRIOR TO PLACEMENT

CONSTRUCTION SCHEDULE:

- THE CONTRACTOR SHALL PREPARE AND SUBMIT A "CONSTRUCTION SAFETY PLAN COMPLIANCE DOCUMENT" AND "CONSTRUCTION SCHEDULE" TO THE ENGINEER AND OWNER FOR REVIEW A MINIMUM OF 10 DAYS PRIOR TO STARTING CONSTRUCTION OR PRIOR TO THE PRE-CONSTRUCTION CONFERENCE, WHICHEVER OCCURS EARLIER. THE PLAN MUST BE ACCEPTABLE TO THE OWNER PRIOR TO BEGINNING WORK.
- THE CONSTRUCTION SCHEDULE SHALL BE REVISED ANY TIME AN ELEMENT OF WORK DOES NOT COINCIDE WITH THE INITIAL TIME LINE PRESENTED OR IF REQUESTED BY THE ENGINEER OR OWNER.

GENERAL NOTES:

- THE CONTRACTOR'S ATTENTION IS DIRECTED TO THE GENERAL CONTRACT PROVISIONS, TECHNICAL SPECIFICATIONS AND CONSTRUCTION SAFETY AND PHASING PLAN SECTIONS OF THE CONTRACT DOCUMENT FOR REQUIREMENTS RELATING TO CONSTRUCTION SAFETY, LAYOUT WORK, QUALITY CONTROL TESTING AND OTHER CONTRACT PROVISIONS.
- THE CONTRACTOR, ENGINEER, OWNER, AND OTHER INVITED REPRESENTATIVES OR GUESTS WILL CONDUCT A PRE-CONSTRUCTION MEETING PRIOR TO BEGINNING CONSTRUCTION IN ORDER TO DISCUSS PROJECT SCHEDULE, CONSTRUCTION REQUIREMENTS, AIRFIELD IMPACTS, AND OTHER AGENDA ITEMS RELATED TO THE PROJECT.
- THE CONTRACTOR SHALL OBTAIN AND THE OWNER WILL PAY FOR ANY PERMITS, FEES, OR CHARGES NECESSARY TO COMPLETE THIS PROJECT.
- THE CONTRACTOR SHALL BE RESPONSIBLE TO LOCATE AND PROTECT ALL UTILITIES DURING THIS PROJECT. THE CONTRACTOR SHALL BE RESPONSIBLE FOR CALLING THE UTILITY NOTIFICATION CENTER TO LOCATE PUBLIC UTILITIES AND FOR ANY ADDITIONAL UTILITY LOCATES INCLUDING HIRING A PRIVATE LOCATE SERVICE IF REQUIRED. ANY UTILITIES DAMAGED IN CONJUNCTION WITH THE CONSTRUCTION ACTIVITIES SHALL BE REPLACED AND/OR REPAIRED BY THE CONTRACTOR AS APPROVED BY THE OWNER.
- ALL HAUL ROUTES SHALL BE MAINTAINED DURING CONSTRUCTION AND SHALL BE RESTORED TO ORIGINAL CONDITION BY THE CONTRACTOR UPON COMPLETION OF THE PROJECT. VERIFY CONDITION WITH OWNER PRIOR TO CONSTRUCTION. RESTORATION AND GRADING OF GRAVEL ACCESS ROADS SHALL BE CONDUCTED UPON COMPLETION OF USE BY THE CONTRACTOR.
- LIMITS OF WORK SHOWN ON THIS SHEET ARE APPROXIMATE AND SHOW GENERAL AREAS OF WORK. SEE SPECIFIC SHEETS FOR ACTUAL LIMITS OF WORK.

PROJECT FUNDING:

- EXECUTION OF ALL WORK IN THIS CONTRACT IS CONTINGENT UPON THE CITY OF ALBANY'S RECEIPT OF FEDERAL FUNDS. THESE FUNDS WILL NOT BE ASSURED UNTIL A GRANT IS EXECUTED BETWEEN THE FAA AND THE CITY OF ALBANY AFTER THE CONTRACT BID OPENING. GRANT EXECUTION IS EXPECTED TO OCCUR IN THE LATE SPRING/ EARLY SUMMER OF 2021. OWNER SHALL HAVE THE FINAL AUTHORITY REGARDING START DATE OF CONSTRUCTION.
- ALL ELEMENTS OF WORK ARE AIRPORT IMPROVEMENT PROGRAM (AIP) ELIGIBLE.

CONTRACTOR'S SUPERINTENDENT AND SAFETY OFFICER:

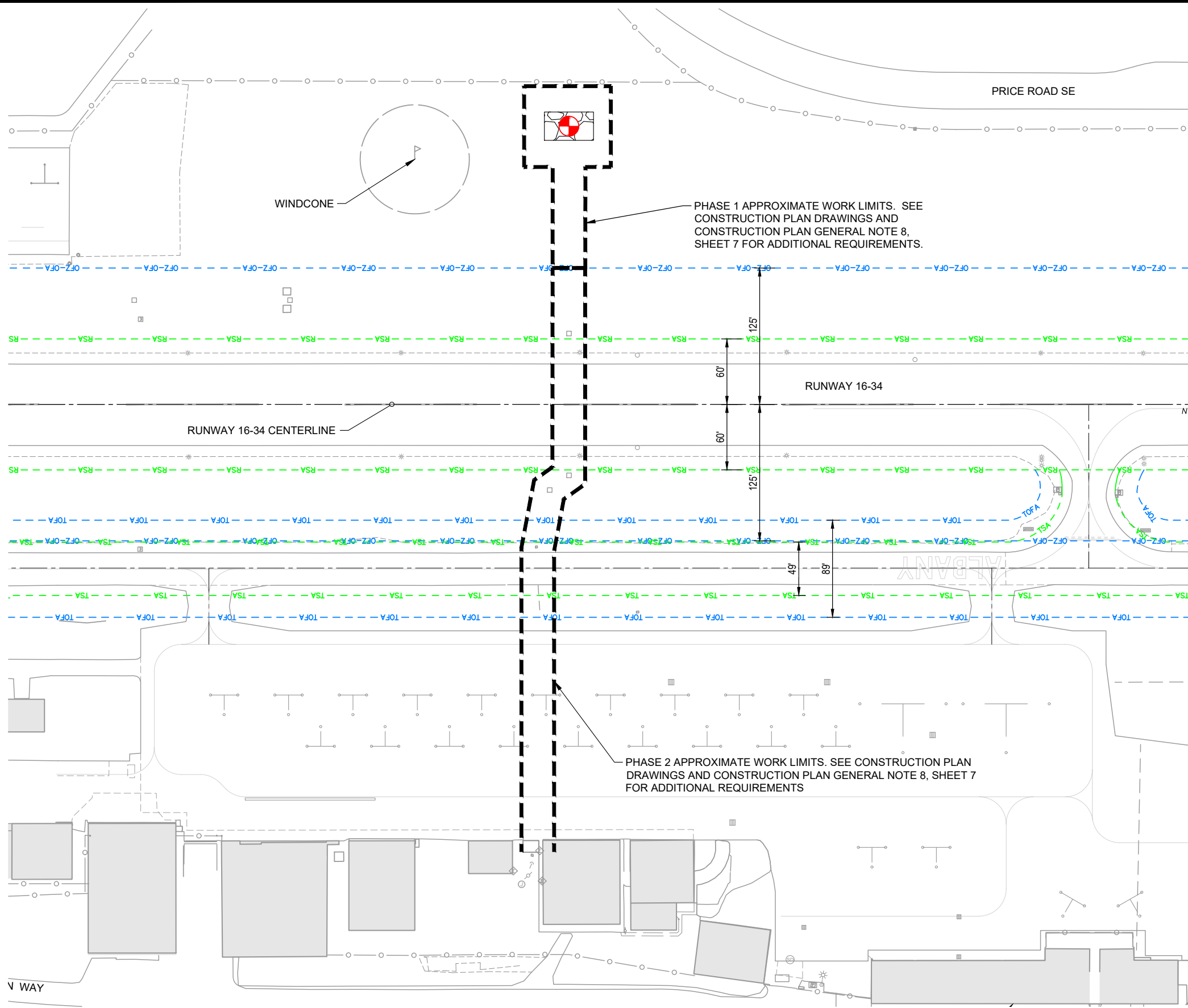
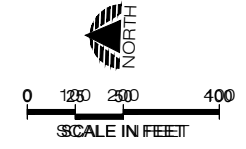
- THE CONTRACTOR SHALL HAVE A FULL TIME SUPERINTENDENT ON THE PROJECT SITE ANY TIME WORK IS BEING ACCOMPLISHED ON THE AIRPORT. THIS INCLUDES WORK BEING PERFORMED BY SUBCONTRACTORS OR SERVICE PROVIDERS UNLESS OTHERWISE APPROVED BY THE OWNER.
- THE CONTRACTOR SHALL ASSIGN ONE PERSON TO BE THE SAFETY OFFICER DURING THE PROJECT. THE SAFETY OFFICER SHALL BE ONSITE AT ALL TIMES WHEN WORK IS OCCURRING IN THE AIR OPERATIONS AREA (AOA) WHEN THE AIRPORT IS OPEN UNLESS OTHERWISE APPROVED BY THE OWNER. THE SAFETY OFFICER SHALL BE RESPONSIBLE FOR THE EDUCATION AND TRAINING OF ALL PERSONNEL WHO WILL ACCESS AIRPORT PROPERTY. THE OFFICER SHALL MAINTAIN RECORDS INDICATING THAT PERSONNEL HAVE BEEN TRAINED AND ARE FAMILIAR WITH SAFETY RULES AND REGULATIONS RELATED TO OPERATIONS AT THE AIRPORT DURING CONSTRUCTION. PERSONNEL WHO VIOLATE SAFETY REQUIREMENTS MAY BE REMOVED FROM THE PROJECT AT THE DISCRETION OF THE OWNER. THE SAFETY OFFICER SHALL ALSO BE RESPONSIBLE FOR FOREIGN OBJECT DEBRIS (FOD) MANAGEMENT. SEE CONSTRUCTION SAFETY AND PHASING PLAN FOR ADDITIONAL REQUIREMENTS.
- THE CONTRACTOR'S SUPERINTENDENT AND SAFETY OFFICER SHALL ATTEND THE WEEKLY CONSTRUCTION MEETING.

WEEKLY CONSTRUCTION MEETING:

- THE CONTRACTOR, ENGINEER, RPR, OWNER, OWNER'S REPRESENTATIVE AND OTHER INVITED REPRESENTATIVES OR GUESTS WILL CONDUCT A WEEKLY CONSTRUCTION MEETING IN ORDER TO DISCUSS ACTIVITIES ON THE PROJECT. THE MEETING SHALL BE USED TO DISCUSS CONSTRUCTION ISSUES, PROJECT SCHEDULE, AND AIRPORT OPERATIONS DURING CONSTRUCTION AND OTHER AGENDA ITEMS RELATED TO THE PROJECT. SPECIFIC ACTIVITIES ANTICIPATED FOR THE FOLLOWING WEEK SHALL BE DISCUSSED, PARTICULARLY THOSE IMPACTING AIRPORT OPERATIONS AND SAFETY. A TWO WEEK LOOK AHEAD SHALL ALSO BE PROVIDED.

03/11/21 - 1:47pm - JWade - P:\Alab006_awos\040\CAD\DWG\Sheets\ALB006-SitePlan.dwg

 PRECISION APPROACH ENGINEERING 5125 Southwest Hout Street Corvallis, OR 97333 541•754•0043	 REGISTERED PROFESSIONAL ENGINEER 72693PE OREGON DIGITALLY SIGNED JUNE 14, 2021 GEOFF W. VAUGHN EXPIRES 6/30/2022	REVISIONS: _____ DATE APPD. _____ _____ _____ _____	DATE: MAR 2021 DESIGN: GWV DRAWN: JAW CHECKED: GWV REVISION NUMBER: 0 SCALE: AS SHOWN	ALBANY MUNICIPAL AIRPORT AWOS-III P/T IMPROVEMENTS SITE PLAN PRECISION APPROACH ENGINEERING, INC. AIP NO. 3-41-0001-017-2021	PROJECT NUMBER: ALB006 SHEET NO. 3 OF 12
--	--	--	--	---	--



- AIRFIELD CRITICAL AREAS LEGEND**
- - - - - RSA - - - - - RSA RUNWAY SAFETY AREA (RSA)
 - - - - - OFZ-OFA - - - - - OFZ-OFA RUNWAY OBJECT FREE AREA (OFA) AND RUNWAY OBSTACLE FREE ZONE (ROFZ)
 - - - - - TSA - - - - - TSA TAXIWAY SAFETY AREA (TSA)
 - - - - - TOFA - - - - - TOFA TAXIWAY OBJECT FREE AREA (TOFA)

03/11/21 - 1:47pm - J\Wade - P:\Alab006 awos\040CAD\DWG\Sheets\ALB006-Phasing.dwg

NOTE:
THIS DRAWING IS INTENDED TO BE PRINTED IN COLOR.
PRINTING IN BLACK AND WHITE MAY REDUCE READABILITY
AND ALTER ENTITY DEFINITION OR REPRESENTATION.

PRECISION APPROACH
ENGINEERING
5125 Southwest Hout Street
Corvallis, OR 97333
541•754•0043

REGISTERED PROFESSIONAL ENGINEER
72693PE
DIGITALLY SIGNED
OREGON
JUNE 14, 2017
GEOFF W. VAUGHN
EXPIRES 6/30/2022

REVISIONS:	DATE	APPD.

DATE:	MAR 2021
DESIGN:	GWV
DRAWN:	JAW
CHECKED:	GWV
REVISION NUMBER:	0
SCALE:	AS SHOWN

ALBANY MUNICIPAL AIRPORT
AWOS-III P/T IMPROVEMENTS

CONSTRUCTION PLAN - PROJECT SPECIFIC CRITICAL AREAS

PRECISION APPROACH ENGINEERING, INC.
AIP NO. 3-41-0001-017-2021

PROJECT NUMBER:
ALB006

SHEET NO.
4

OF **12**

PROJECT CONSTRUCTION TIME

WORK ELEMENTS TO COINCIDE WITH CLOSURE AREAS IDENTIFIED IN CONSTRUCTION PLANS
 ALL ELEMENTS OF WORK TO BE COMPLETED WITHIN THE TOTAL PROJECT CALENDAR DAY COUNT.

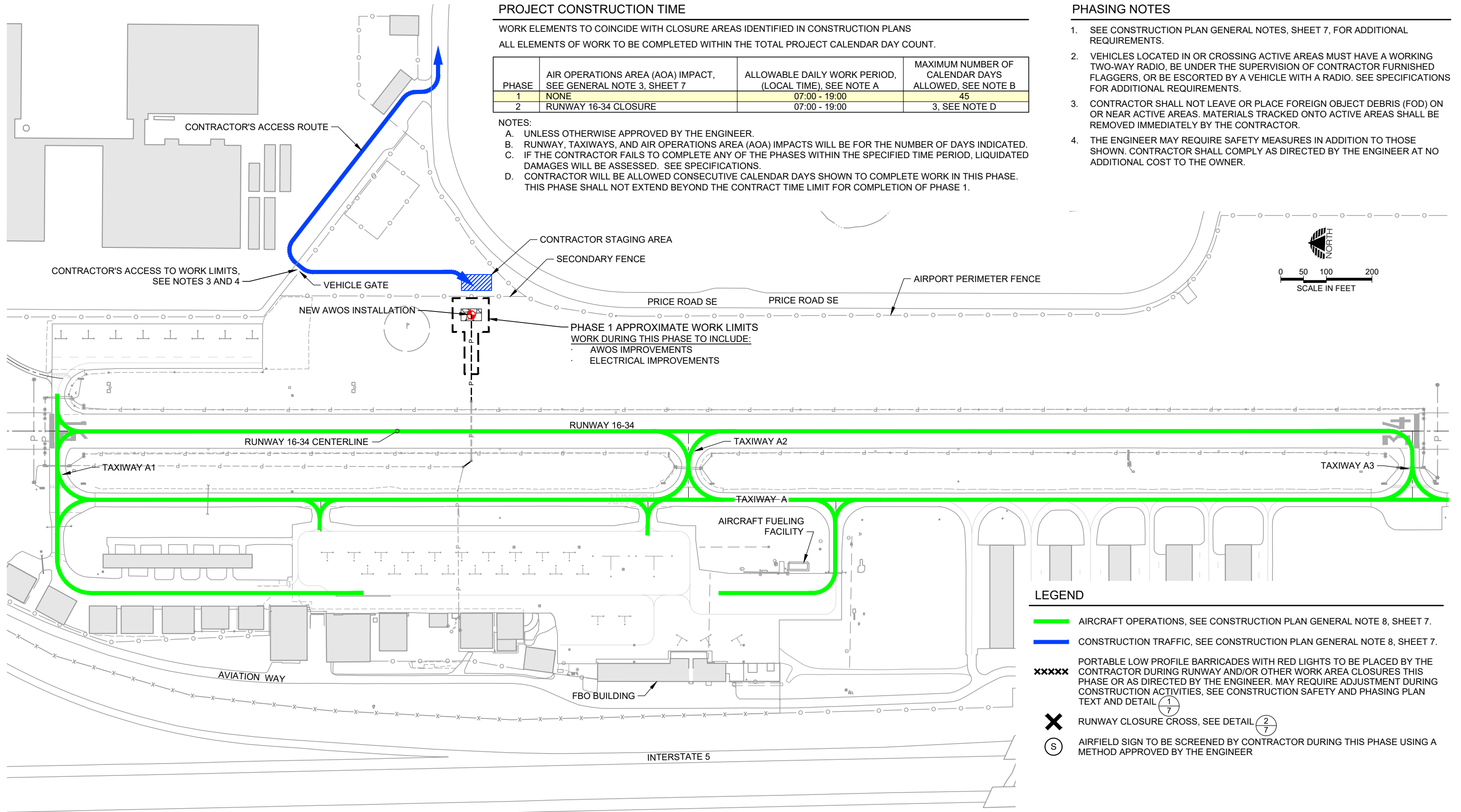
PHASE	AIR OPERATIONS AREA (AOA) IMPACT, SEE GENERAL NOTE 3, SHEET 7	ALLOWABLE DAILY WORK PERIOD, (LOCAL TIME), SEE NOTE A	MAXIMUM NUMBER OF CALENDAR DAYS ALLOWED, SEE NOTE B
1	NONE	07:00 - 19:00	45
2	RUNWAY 16-34 CLOSURE	07:00 - 19:00	3, SEE NOTE D

NOTES:

- A. UNLESS OTHERWISE APPROVED BY THE ENGINEER.
- B. RUNWAY, TAXIWAYS, AND AIR OPERATIONS AREA (AOA) IMPACTS WILL BE FOR THE NUMBER OF DAYS INDICATED.
- C. IF THE CONTRACTOR FAILS TO COMPLETE ANY OF THE PHASES WITHIN THE SPECIFIED TIME PERIOD, LIQUIDATED DAMAGES WILL BE ASSESSED. SEE SPECIFICATIONS.
- D. CONTRACTOR WILL BE ALLOWED CONSECUTIVE CALENDAR DAYS SHOWN TO COMPLETE WORK IN THIS PHASE. THIS PHASE SHALL NOT EXTEND BEYOND THE CONTRACT TIME LIMIT FOR COMPLETION OF PHASE 1.

PHASING NOTES

1. SEE CONSTRUCTION PLAN GENERAL NOTES, SHEET 7, FOR ADDITIONAL REQUIREMENTS.
2. VEHICLES LOCATED IN OR CROSSING ACTIVE AREAS MUST HAVE A WORKING TWO-WAY RADIO, BE UNDER THE SUPERVISION OF CONTRACTOR FURNISHED FLAGGERS, OR BE ESCORTED BY A VEHICLE WITH A RADIO. SEE SPECIFICATIONS FOR ADDITIONAL REQUIREMENTS.
3. CONTRACTOR SHALL NOT LEAVE OR PLACE FOREIGN OBJECT DEBRIS (FOD) ON OR NEAR ACTIVE AREAS. MATERIALS TRACKED ONTO ACTIVE AREAS SHALL BE REMOVED IMMEDIATELY BY THE CONTRACTOR.
4. THE ENGINEER MAY REQUIRE SAFETY MEASURES IN ADDITION TO THOSE SHOWN. CONTRACTOR SHALL COMPLY AS DIRECTED BY THE ENGINEER AT NO ADDITIONAL COST TO THE OWNER.



LEGEND

- AIRCRAFT OPERATIONS, SEE CONSTRUCTION PLAN GENERAL NOTE 8, SHEET 7.
- CONSTRUCTION TRAFFIC, SEE CONSTRUCTION PLAN GENERAL NOTE 8, SHEET 7.
- XXXXX PORTABLE LOW PROFILE BARRICADES WITH RED LIGHTS TO BE PLACED BY THE CONTRACTOR DURING RUNWAY AND/OR OTHER WORK AREA CLOSURES THIS PHASE OR AS DIRECTED BY THE ENGINEER. MAY REQUIRE ADJUSTMENT DURING CONSTRUCTION ACTIVITIES, SEE CONSTRUCTION SAFETY AND PHASING PLAN TEXT AND DETAIL (1/7)
- X RUNWAY CLOSURE CROSS, SEE DETAIL (2/7)
- (S) AIRFIELD SIGN TO BE SCREENED BY CONTRACTOR DURING THIS PHASE USING A METHOD APPROVED BY THE ENGINEER

03/11/21 - 1:47pm - JWade - P:\Alab006_awos\0400CAD\DWG\Sheets\ALB006-Phasing.dwg

NOTE:
 THIS DRAWING IS INTENDED TO BE PRINTED IN COLOR.
 PRINTING IN BLACK AND WHITE MAY REDUCE READABILITY
 AND ALTER ENTITY DEFINITION OR REPRESENTATION.

PRECISION APPROACH ENGINEERING
 5125 Southwest Hout Street
 Corvallis, OR 97333
 541•754•0043

REGISTERED PROFESSIONAL ENGINEER
 OREGON
 72693PE
 DIGITALLY SIGNED
 JUNE 14, 2017
 GEOFF W. VAUGHN
 EXPIRES 6/30/2022

REVISIONS:	DATE	APPD.

DATE:	MAR 2021
DESIGN:	GWV
DRAWN:	JAW
CHECKED:	GWV
REVISION NUMBER:	0
SCALE:	AS SHOWN

ALBANY MUNICIPAL AIRPORT
 AWOS-III P/T IMPROVEMENTS

CONSTRUCTION PLAN - PHASE 1

PRECISION APPROACH ENGINEERING, INC.
 AIP NO. 3-41-0001-017-2021

PROJECT NUMBER:
ALB006

SHEET NO.
5

OF **12**

PROJECT CONSTRUCTION TIME

WORK ELEMENTS TO COINCIDE WITH CLOSURE AREAS IDENTIFIED IN CONSTRUCTION PLANS
ALL ELEMENTS OF WORK TO BE COMPLETED WITHIN THE TOTAL PROJECT CALENDAR DAY COUNT.

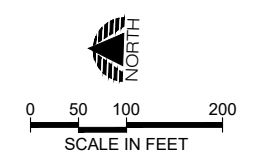
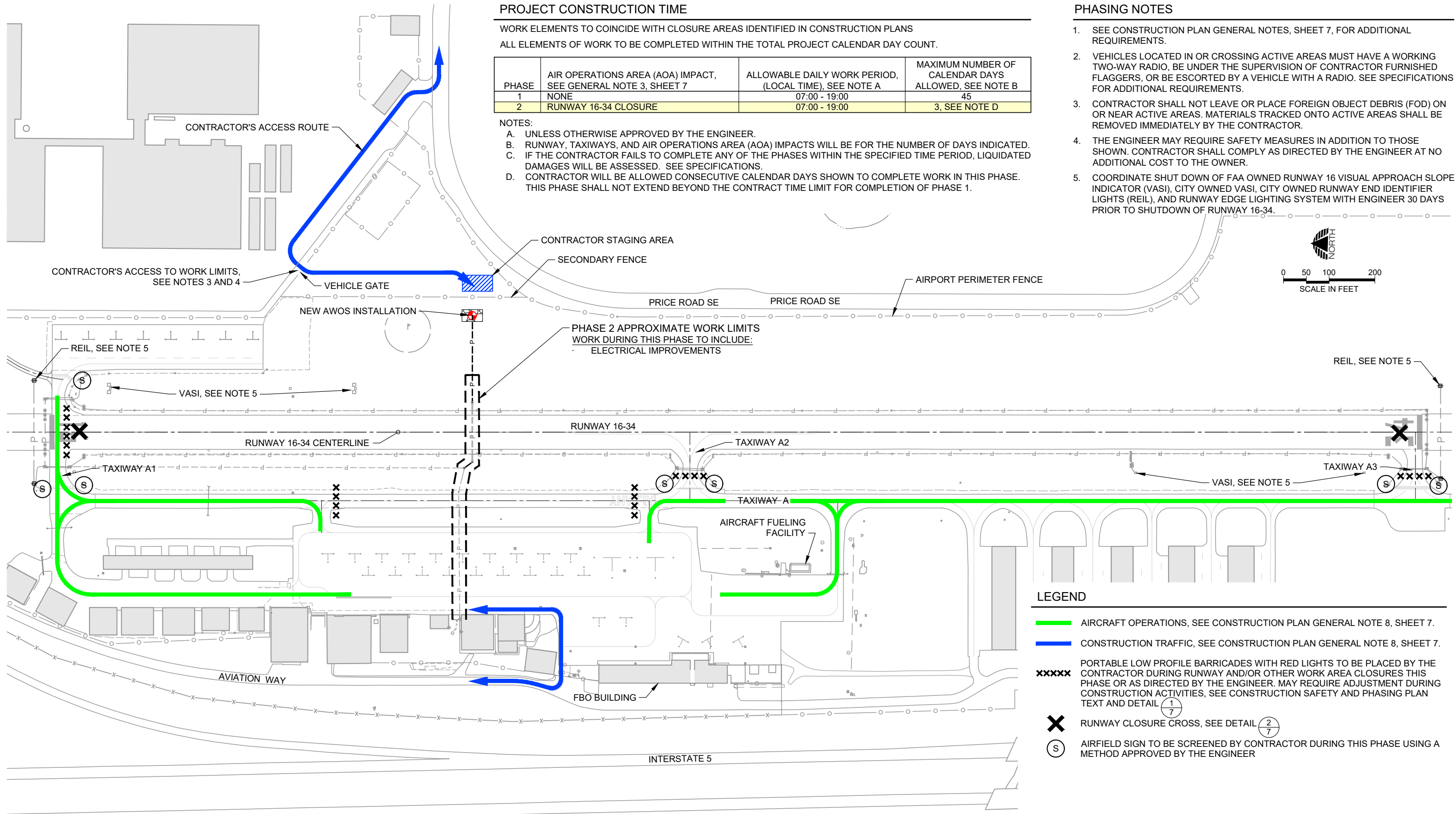
PHASE	AIR OPERATIONS AREA (AOA) IMPACT, SEE GENERAL NOTE 3, SHEET 7	ALLOWABLE DAILY WORK PERIOD, (LOCAL TIME), SEE NOTE A	MAXIMUM NUMBER OF CALENDAR DAYS ALLOWED, SEE NOTE B
1	NONE	07:00 - 19:00	45
2	RUNWAY 16-34 CLOSURE	07:00 - 19:00	3, SEE NOTE D

NOTES:

- A. UNLESS OTHERWISE APPROVED BY THE ENGINEER.
- B. RUNWAY, TAXIWAYS, AND AIR OPERATIONS AREA (AOA) IMPACTS WILL BE FOR THE NUMBER OF DAYS INDICATED.
- C. IF THE CONTRACTOR FAILS TO COMPLETE ANY OF THE PHASES WITHIN THE SPECIFIED TIME PERIOD, LIQUIDATED DAMAGES WILL BE ASSESSED. SEE SPECIFICATIONS.
- D. CONTRACTOR WILL BE ALLOWED CONSECUTIVE CALENDAR DAYS SHOWN TO COMPLETE WORK IN THIS PHASE. THIS PHASE SHALL NOT EXTEND BEYOND THE CONTRACT TIME LIMIT FOR COMPLETION OF PHASE 1.

PHASING NOTES

1. SEE CONSTRUCTION PLAN GENERAL NOTES, SHEET 7, FOR ADDITIONAL REQUIREMENTS.
2. VEHICLES LOCATED IN OR CROSSING ACTIVE AREAS MUST HAVE A WORKING TWO-WAY RADIO, BE UNDER THE SUPERVISION OF CONTRACTOR FURNISHED FLAGGERS, OR BE ESCORTED BY A VEHICLE WITH A RADIO. SEE SPECIFICATIONS FOR ADDITIONAL REQUIREMENTS.
3. CONTRACTOR SHALL NOT LEAVE OR PLACE FOREIGN OBJECT DEBRIS (FOD) ON OR NEAR ACTIVE AREAS. MATERIALS TRACKED ONTO ACTIVE AREAS SHALL BE REMOVED IMMEDIATELY BY THE CONTRACTOR.
4. THE ENGINEER MAY REQUIRE SAFETY MEASURES IN ADDITION TO THOSE SHOWN. CONTRACTOR SHALL COMPLY AS DIRECTED BY THE ENGINEER AT NO ADDITIONAL COST TO THE OWNER.
5. COORDINATE SHUT DOWN OF FAA OWNED RUNWAY 16 VISUAL APPROACH SLOPE INDICATOR (VASI), CITY OWNED VASI, CITY OWNED RUNWAY END IDENTIFIER LIGHTS (REIL), AND RUNWAY EDGE LIGHTING SYSTEM WITH ENGINEER 30 DAYS PRIOR TO SHUTDOWN OF RUNWAY 16-34.



LEGEND

- AIRCRAFT OPERATIONS, SEE CONSTRUCTION PLAN GENERAL NOTE 8, SHEET 7.
- CONSTRUCTION TRAFFIC, SEE CONSTRUCTION PLAN GENERAL NOTE 8, SHEET 7.
- XXXXX PORTABLE LOW PROFILE BARRICADES WITH RED LIGHTS TO BE PLACED BY THE CONTRACTOR DURING RUNWAY AND/OR OTHER WORK AREA CLOSURES THIS PHASE OR AS DIRECTED BY THE ENGINEER. MAY REQUIRE ADJUSTMENT DURING CONSTRUCTION ACTIVITIES, SEE CONSTRUCTION SAFETY AND PHASING PLAN TEXT AND DETAIL (1/7)
- X RUNWAY CLOSURE CROSS, SEE DETAIL (2/7)
- (S) AIRFIELD SIGN TO BE SCREENED BY CONTRACTOR DURING THIS PHASE USING A METHOD APPROVED BY THE ENGINEER

03/11/21 - 1:47pm - JWade - P:\Alab006_aws\0400CAD\DWG\Sheets\ALB006-Phasing.dwg

NOTE:
THIS DRAWING IS INTENDED TO BE PRINTED IN COLOR.
PRINTING IN BLACK AND WHITE MAY REDUCE READABILITY
AND ALTER ENTITY DEFINITION OR REPRESENTATION.

PRECISION APPROACH ENGINEERING
5125 Southwest Hout Street
Corvallis, OR 97333
541•754•0043

REGISTERED PROFESSIONAL ENGINEER
72693PE
DIGITALLY SIGNED
OREGON
JUNE 14, 2017
GEOFF W. VAUGHN
EXPIRES 6/30/2022

REVISIONS:	DATE	APPD.

DATE:	MAR 2021
DESIGN:	GWV
DRAWN:	JAW
CHECKED:	GWV
REVISION NUMBER:	0
SCALE:	AS SHOWN

ALBANY MUNICIPAL AIRPORT
AWOS-III P/T IMPROVEMENTS

CONSTRUCTION PLAN - PHASE 2

PRECISION APPROACH ENGINEERING, INC.
AIP NO. 3-41-0001-017-2021

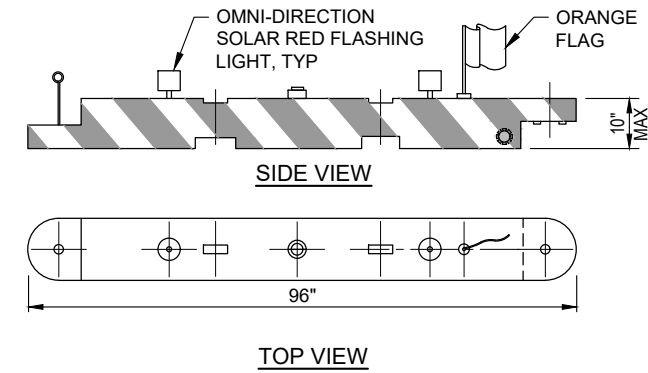
PROJECT NUMBER:
ALB006

SHEET NO.
6

OF **12**

CONSTRUCTION PLAN GENERAL NOTES

- EXCEPT FOR CLOSURES NOTED, AIRPORT AND AIR OPERATIONS AREAS (AOAS) TO REMAIN OPEN TO AIRCRAFT OPERATIONS DURING ENTIRE COURSE OF WORK. SEE SPECIFICATIONS AND CONSTRUCTION SAFETY AND PHASING PLAN (CSPP) TEXT FOR ADDITIONAL REQUIREMENTS. CONTRACTOR SHALL COORDINATE WORK TO ASSURE MINIMUM INCONVENIENCE TO AIRPORT OPERATIONS. IN ALL CIRCUMSTANCES SAFETY SHALL TAKE PRECEDENCE.
- AIRCRAFT ACCESS TO THE APRON AREAS AND HANGARS TO BE MAINTAINED AT ALL TIMES.
- WORK WITHIN THE RUNWAY OBSTACLE FREE ZONE (ROFZ) OR TAXIWAY OBJECT FREE AREA (TOFA) WILL REQUIRE CLOSURE OF IMPACTED RUNWAY OR TAXIWAY. SEE AIRFIELD CRITICAL AREAS DRAWING FOR LIMITS. SEE CSPP TEXT FOR ADDITIONAL REQUIREMENTS.
- THE CONTRACTOR SHALL PROVIDE SUFFICIENT LEAD TIME FOR REQUIRED NOTIFICATIONS WITH PROJECT STAKEHOLDERS AND THE FEDERAL AVIATION ADMINISTRATION. THIS WILL REQUIRE SUBMITTAL OF A PRELIMINARY SCHEDULE TO INCLUDE START DATES FOR INDIVIDUAL PHASES AND DATES FOR AIRPORT FACILITIES IMPACTS WITHIN 10 CALENDAR DAYS AFTER NOTICE OF CONTRACT AWARD. A REVISED "CONSTRUCTION SCHEDULE" WILL BE PREPARED IN CONJUNCTION WITH THE PRE-CONSTRUCTION MEETING. THE CONTRACTOR SHALL NOTIFY THE OWNER WITH REQUESTS FOR NOTICES TO AIRMEN (NOTAMS) 48 HOURS PRIOR TO IMPLEMENTATION. CONTRACTOR SHALL COORDINATE WITH ENGINEER FOR CONSTRUCTION RELATED AOA CLOSURES. CLOSURES ARE SUBJECT TO APPROVAL BY THE OWNER. SEE CSPP TEXT FOR ADDITIONAL REQUIREMENTS.
- CONTRACTOR SHALL DELINEATE LOCATION OF RUNWAY OBJECT FREE AREA (ROFA) AND TOFA AT TRAFFIC ACCESS POINTS, AND PROVIDE OTHER FIELD DELINEATION TO SEPARATE CONSTRUCTION ACTIVITIES FROM AIRPORT OPERATIONS AS DIRECTED BY THE ENGINEER. DELINEATION WITHIN THE ROFA AND TOFA SHALL BE LOW PROFILE AND SHALL NOT PRESENT A HAZARD TO AIRCRAFT. CONES, STAKES, OR OTHER METHODS AS APPROVED BY THE ENGINEER MAY BE USED OUTSIDE THE ROFA AND TOFA.
- BARRICADES, LIGHTS, AND OTHER CONSTRUCTION CONTROL DEVICES FURNISHED, PLACED, AND MAINTAINED BY THE CONTRACTOR SHALL BE PROVIDED AT VARIOUS LOCATIONS, AS NECESSARY TO ADEQUATELY SEPARATE CONSTRUCTION ACTIVITIES FROM THE AOA. BARRICADES SHOWN ON THE DRAWINGS ARE FOR REFERENCE AND THE NUMBER AND LOCATION OF BARRICADES MAY CHANGE TO MEET SAFETY REQUIREMENTS.
- PRIOR TO REOPENING A CLOSED RUNWAY OR TAXIWAY FOR OPERATIONS THE CONTRACTOR SHALL PROVIDE ADEQUATE TIME FOR THE ENGINEER OR OWNER TO INSPECT FOR CLEANLINESS AND CONFORMANCE TO REGULATIONS INCLUDING GRADING REQUIREMENTS OF THE RUNWAY SAFETY AREA (RSA) OR TAXIWAY SAFETY AREA (TSA). THE TIME NEEDED FOR INSPECTION AND POSSIBLE NECESSARY CORRECTIVE ACTION SHALL BE INCLUDED WITHIN THE ALLOWED CLOSURE PERIOD.
- WORK AREAS SHOWN IN PHASING PLANS ARE APPROXIMATE. SEE APPROPRIATE DRAWINGS FOR SPECIFIC WORK LIMITS. CONTRACTOR SHALL COORDINATE ALL WORK ELEMENTS COMPATIBLE WITH INTENDED PHASE UNLESS OTHERWISE APPROVED BY THE ENGINEER OR OWNER. AIRCRAFT OPERATIONS ROUTES SHOWN ARE APPROXIMATE AND ARE NOT LIMITED TO LOCATIONS SHOWN. CONTRACTOR SHALL REMAIN CLEAR OF AIRCRAFT OPERATIONS AT ALL TIMES.
- CONTRACTOR SHALL NOT BLOCK VEHICLE ACCESS ROADS OR GATES AT ANY TIME.
- LOCATION OF THE CONTRACTOR'S STAGING AREAS ARE APPROXIMATE. VERIFY LIMITS AND LOCATIONS WITH ENGINEER PRIOR TO MOBILIZATION.
- ALL VEHICLES NOT ESSENTIAL FOR CONSTRUCTION, INCLUDING CONTRACTOR-EMPLOYEE VEHICLES SHALL REMAIN OUTSIDE OF AIR OPERATIONS AREA. PARKING SHALL BE CONFINED TO THE CONTRACTOR'S STAGING AREA.
- ALL PORTIONS OF WORK NOT COVERED BY PAYMENT UNDER A SPECIFIC BID ITEM OR LISTED AS INCIDENTAL TO A BID ITEM SHALL BE CONSIDERED INCIDENTAL TO THE MOBILIZATION BID ITEM.
- THE CONTRACTOR SHALL USE AND MONITOR THE AIRPORT'S COMMON TRAFFIC ADVISORY FREQUENCY (CTAF), 122.725 MHZ. SEE CSPP TEXT FOR ADDITIONAL REQUIREMENTS.
- CONTRACTOR SHALL SCREEN EXISTING GUIDANCE SIGNS LEADING TO CLOSED AREAS USING METHODS APPROVED BY ENGINEER. CONTRACTOR SHALL SUBMIT GUIDANCE SIGN SCREENING PLAN FOR ENGINEER REVIEW AND APPROVAL PRIOR TO IMPLEMENTATION.
- ALL CONSTRUCTION EQUIPMENT MUST BE MARKED WITH A 3 FEET BY 3 FEET ORANGE AND WHITE CHECKERED FLAG AND/OR AMBER BEACON. ALL CONSTRUCTION VEHICLES MUST BE CLEARLY MARKED WITH THE COMPANY LOGO AT ALL TIMES.
- AIRFIELD LIGHTING TO BE OPERATIONAL AT ALL TIMES FROM SUNSET TO SUNRISE FOR AREAS OPEN TO AIRCRAFT OPERATIONS.



NOTES:

- PROVIDE BARRICADE CAPABLE OF BEING FILLED WITH WATER OR SAND. IF ALTERNATE METHOD OF ANCHORING IS USED IT SHALL NOT CAUSE DAMAGE TO PAVEMENT.
- BARRICADE TO BE CAPABLE OF BEING DEPLOYED BY ONE PERSON WHEN EMPTY.
- CONTRACTOR SHALL MAINTAIN ALL LIGHTS IN WORKING ORDER FOR THE DURATION OF THE PROJECT. CONTRACTOR SHALL REPLACE FLAGS AS NECESSARY OR AS DIRECTED BY THE ENGINEER DUE TO DETERIORATION.
- BARRICADES TO BE PROVIDED BY THE CONTRACTOR ARE INCIDENTAL TO THE MOBILIZATION BID ITEM AND ARE PROPERTY OF THE CONTRACTOR UPON COMPLETION OF THE PROJECT.
- NO CONSTRUCTION SHALL BEGIN UNTIL BARRICADES HAVE BEEN PLACED AND APPROVED BY THE ENGINEER.

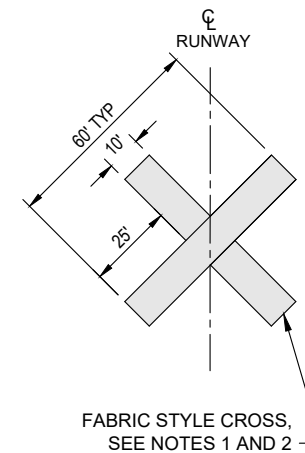
PORTABLE PLASTIC BARRICADE DETAIL

NTS



RUNWAY CLOSURE CROSS NOTES:

- TWO FAA APPROVED FABRIC STYLE TEMPORARY CLOSURE CROSSES SHALL BE PROVIDED BY THE CONTRACTOR. THE CONTRACTOR SHALL BE RESPONSIBLE FOR PLACEMENT AND MAINTAINING THE CONDITION OF THE CROSSES. CROSSES MUST BE PROPERLY CONFIGURED AND SECURED TO PREVENT MOVEMENT BY PROP WASH, JET BLAST, OR OTHER WIND CURRENTS AS REQUIRED OR DIRECTED BY THE RPR. SEE SPECIFICATIONS FOR ADDITIONAL INFORMATION AND REQUIREMENTS.
- PLACE CLOSURE CROSSES AT THE RUNWAY NUMERALS OR AS INDICATED ON THE DRAWINGS ANYTIME RUNWAY 16-34 IS CLOSED TO OPERATIONS.
- CLOSURE CROSSES TO BE PROVIDED BY THE CONTRACTOR ARE INCIDENTAL TO THE MOBILIZATION BID ITEM AND ARE PROPERTY OF THE CONTRACTOR UPON COMPLETION OF THE PROJECT.



RUNWAY CLOSURE CROSS DETAIL

NTS



REVISIONS: _____ DATE APPD. _____

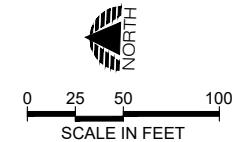
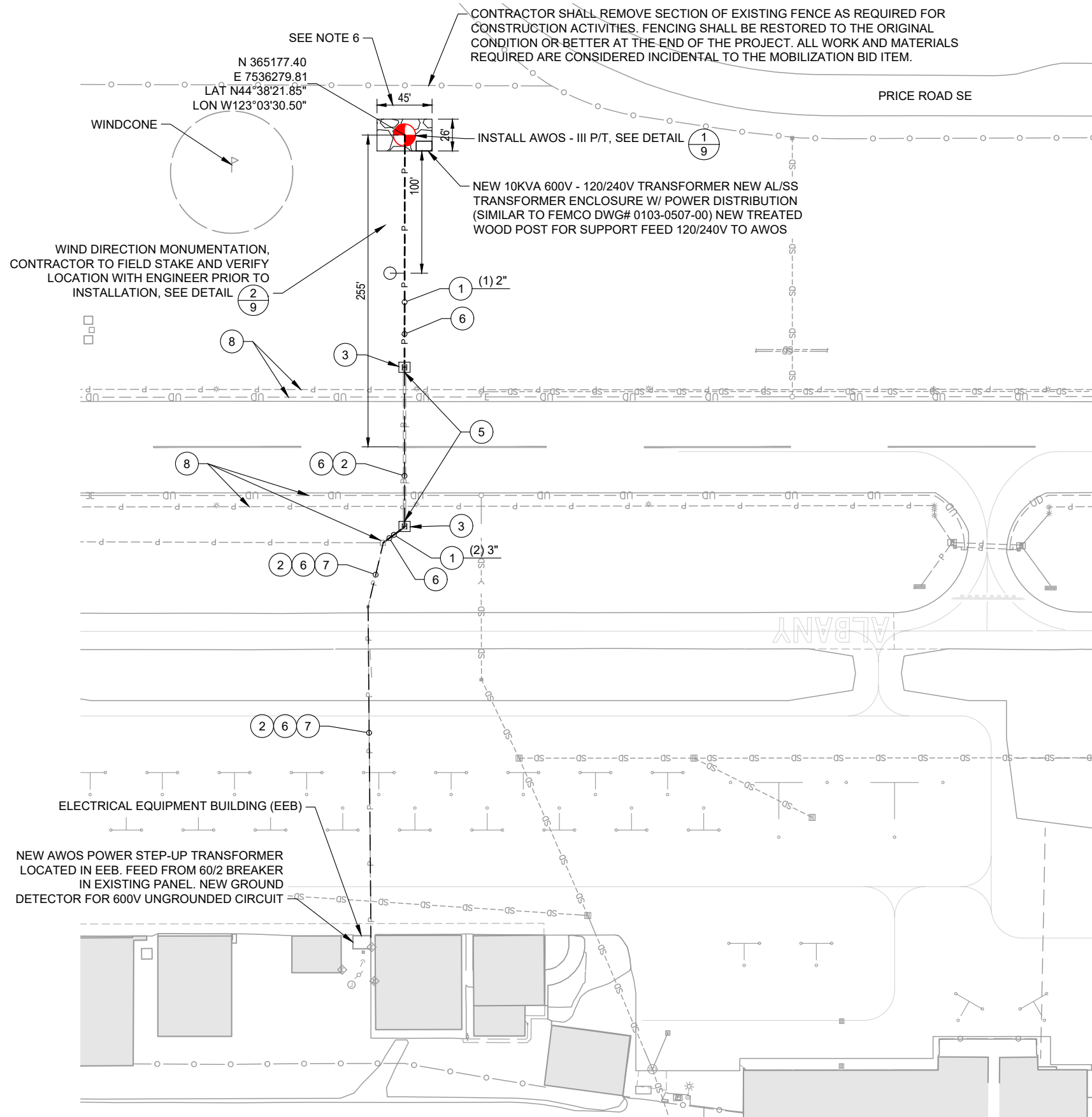
DATE: MAR 2021
 DESIGN: GWV
 DRAWN: JAW
 CHECKED: GWV
 REVISION NUMBER: 0

SCALE: AS SHOWN

ALBANY MUNICIPAL AIRPORT
 AWOS-III P/T IMPROVEMENTS
**CONSTRUCTION PLAN GENERAL
 NOTES AND DETAILS**
 PRECISION APPROACH ENGINEERING, INC.
 AIP NO. 3-41-0001-017-2021

PROJECT NUMBER:
ALB006
 SHEET NO.
7
 OF **12**

03/11/21 - 1:47pm - J\Wade - P:\Alab006 awos\040CAD\DWG\Sheets\ALB006-Layout.dwg



ELECTRICAL CONSTRUCTION NOTES

- 1 INSTALL CONDUIT, QUANTITY AND SIZE AS NOTED, SEE DETAIL (2/11)
- 2 EXISTING CONDUIT(S) TO BE USED/REUSED, PROTECT
- 3 INSTALL HANDHOLE, SEE DETAIL (1/10)
- 4 INSTALL JUNCTION CAN, SEE DETAIL (2/10)
- 5 EXPOSE AND INTERCEPT EXISTING CONDUIT(S)
- 6 2-1/C NO. 8 (5KV) - AWOS POWER
- 7 REPLACE EXISTING 2-1/C 5KV MIRL POWER
- 8 PROTECT DURING CONSTRUCTION

GENERAL ELECTRICAL NOTES

1. ALL ELECTRICAL WORK SHALL OCCUR WITHIN THE CONSTRUCTION PHASES AS DEPICTED IN THE CONSTRUCTION PHASING PLAN. NO WORK SHALL BE DONE OUTSIDE THE CONSTRUCTION PHASE UNLESS APPROVED BY THE ENGINEER.
2. CONTRACTOR SHALL TAKE CARE TO PROTECT EXISTING CONDUITS, POT-HOLING AS REQUIRED TO VERIFY LOCATION.
3. LOCATION OF PROPOSED CIRCUITS IS SCHEMATIC, CONTRACTOR SHALL VERIFY LOCATION OF TRENCHING WITH EXISTING CONDITIONS AND PROPOSED IMPROVEMENTS.
4. PARALLEL CONDUITS SHALL BE INSTALLED IN A COMMON TRENCH.
5. CONTRACTOR SHALL STAKE LOCATIONS OF ALL STRUCTURES AND VERIFY WITH ENGINEER PRIOR TO INSTALLATION.
6. ALL ITEMS AND WORK WITHIN THE LIMITS OF CRUSHED AGGREGATE BASE PAD WILL BE PAID FOR UNDER AWOS-III P/T BID ITEM WITH THE EXCEPTION OF THE CRUSHED AGGREGATE BASE AND GEOTEXTILE FABRIC.

ELECTRICAL LEGEND

- NEW CIRCUITS TO BE PLACED IN EXISTING CONDUIT, REPLACE EXISTING CIRCUITS IN CONDUITS AS INDICATED
- P --- NEW CONDUITS WITH NEW CIRCUITS, AND/OR NEW SPARE CONDUITS
- (1) 2" 1 INDICATES NUMBER OF NEW CONDUITS AND SIZE

PRECISION APPROACH ENGINEERING
 5125 Southwest Hout Street
 Corvallis, OR 97333
 541•754•0043



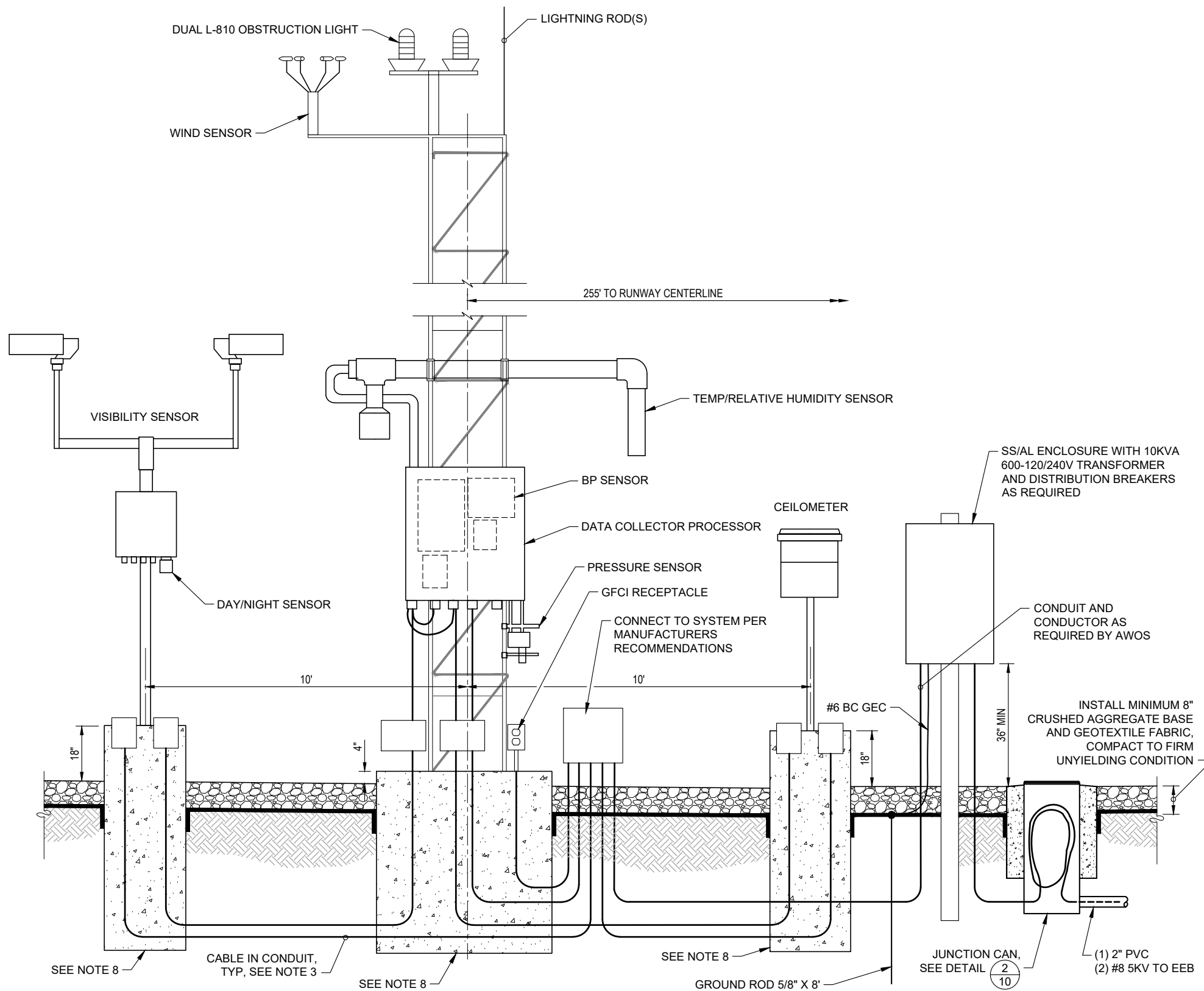
REVISIONS:	DATE	APPD.

DATE: MAR 2021
 DESIGN: GWV
 DRAWN: JAW
 CHECKED: GWV
 REVISION NUMBER: 0
 SCALE: AS SHOWN

ALBANY MUNICIPAL AIRPORT
 AWOS-III P/T IMPROVEMENTS
AWOS LAYOUT PLAN
 PRECISION APPROACH ENGINEERING, INC.
 AIP NO. 3-41-0001-017-2021

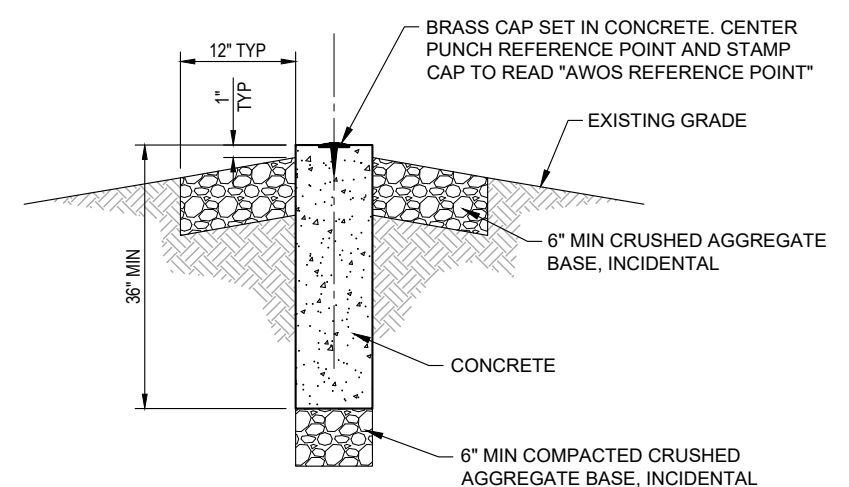
PROJECT NUMBER:
ALB006
 SHEET NO.
8
 OF 12

03/11/21 - 1:47pm - J\Wade - P:\Alab006_aws0400CAD\DWG\Sheets\ALB006-LayoutAndDetails.dwg



AWOS INSTALLATION DETAIL 1
9
 NTS - TYPICAL AWOS, NOT REPRESENTATIVE OF ACTUAL

NOTE: AWOS CONFIGURATION IS SHOWN FOR GENERAL PURPOSES ONLY. ACTUAL CONFIGURATION WILL VARY BASED ON SELECTED BID SCHEDULES AND MANUFACTURER'S RECOMMENDATIONS. SEE AWOS INSTALLATION NOTE 4.



- NOTES:
1. PLACEMENT AND SURVEY OF NEW MONUMENT SHALL BE PERFORMED BY A PROFESSIONAL LAND SURVEYOR (PLS) LICENSED IN THE STATE OF OREGON.
 2. PROVIDE ENGINEER WITH DOCUMENTATION OF COORDINATES OF PUNCHED CENTER POINT ON BRASS CAP AND AWOS TOWER.
 3. MONUMENT LOCATION SHALL BE DUE WEST OF THE AWOS TOWER.

WIND DIRECTION MONUMENT DETAIL 2
9
 NTS

AWOS INSTALLATION NOTES:

1. TOWER SHALL BE PAINTED ALTERNATING ORANGE AND WHITE PER AC 150/5220-16E, 3.3/C.(2)
2. ALL AWOS EQUIPMENT SHALL BE INSTALLED PER FAA ORDER 6560.20C OR MOST CURRENT VERSION THEREOF, LOCAL CODE REQUIREMENTS AND MANUFACTURER'S REQUIREMENTS
3. ALL WIRING SHALL BE PLACED IN CONDUIT, BURIED MIN. 24" DEEP
4. CONTRACTOR SHALL PROVIDE PROPOSED LAYOUT OF AWOS EQUIPMENT, BASED ON MANUFACTURER'S RECOMMENDATION, FOR APPROVAL BY OWNER AND ENGINEER PRIOR TO ORDERING MATERIALS OR BEGINNING CLEARING ACTIVITIES
5. PROVIDE AWOS WITH 120/240V POWER AS REQUIRED BY MANUFACTURER.
6. INSTALL EGC IN ALL CONDUITS. EGC SHALL COMPLY WITH NEC REQUIREMENTS
7. PROVIDE LIGHTNING PROTECTION COMPLIANT WITH NFPA 780-2014 USING CLASS II MATERIALS.
8. INSTALL FOUNDATIONS PER MANUFACTURERS RECOMMENDATIONS, PROVIDE SHOP DRAWINGS FOR APPROVAL
9. CONTRACTOR SHALL PROVIDE INFORMATION ON TOTAL ELECTRIC LOAD OF COMPLETE AWOS SYSTEM TO ENGINEER. CONTRACTOR SHALL DETERMINE THE APPROPRIATE CONDUCTOR SIZE FOR THE 120/240V ELECTRIC SERVICE TO THE AWOS. REQUIRED SAFETY SWITCHES SHALL BE PROVIDED AT EEB AND AWOS. CONTRACTOR SHALL SUBMIT PROPOSED DESIGN. ELECTRIC SERVICE CONSIDERED INCIDENTAL TO ELECTRICAL IMPROVEMENTS BID ITEM. PROVIDE ELECTRICAL SYSTEM SO THAT VOLTAGE DROP DOES NOT EXCEED 3% AT AWOS FULL LOAD.
10. WHERE FLEXIBLE CONDUIT IS INSTALLED OUTDOORS, IT SHALL BE COATED OR UNCOATED STAINLESS STEEL FLEXIBLE CONDUIT WITH COMPATIBLE FITTINGS.
11. ALL EQUIPMENT, ENCLOSURES, CONDUIT, ETC., DIRECTLY EXPOSED TO WEATHER SHALL BE MADE OF SUITABLE CORROSION-RESISTANT MATERIALS. MATERIAL TYPES INCLUDE STAINLESS STEEL AND ALUMINUM AS APPROVED BY THE ENGINEER. EQUIPMENT THAT IS NOT PROVIDED WITH A CORROSION-RESISTANT ENCLOSURE SHALL BE INSTALLED IN A SECONDARY ENCLOSURE MADE ENTIRELY OF CORROSION-RESISTANT MATERIALS.
12. ALL ENCLOSURES, INCLUDING GFCI RECEPTACLE, CIRCUIT BREAKER BOX, TRANSFORMER, AND SAFETY SWITCH SHALL BE MOUNTED A MINIMUM OF 36 INCHES ABOVE GROUND.
13. ALL 600V WIRE SHALL BE XHHW-2 OR AS REQUIRED BY AWOS MANUFACTURER.

PRECISION APPROACH
ENGINEERING
 5125 Southwest Hout Street
 Corvallis, OR 97333
 541•754•0043



REVISIONS:	DATE	APPD.

DATE: MAR 2021
 DESIGN: GWV
 DRAWN: JAW
 CHECKED: GWV
 REVISION NUMBER: 0
 SCALE: AS SHOWN

ALBANY MUNICIPAL AIRPORT
 AWOS-III P/T IMPROVEMENTS

AWOS INSTALLATION DETAILS

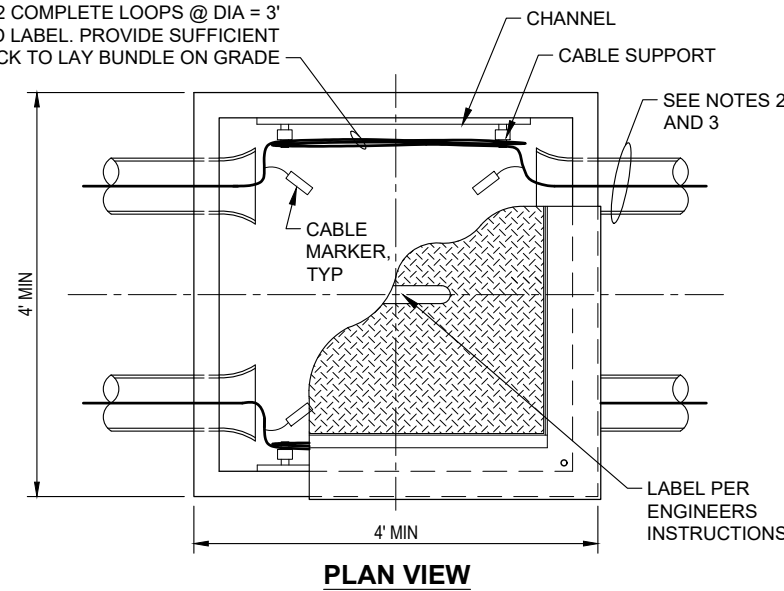
PRECISION APPROACH ENGINEERING, INC.
 AIP NO. 3-41-0001-017-2021

PROJECT NUMBER:
ALB006

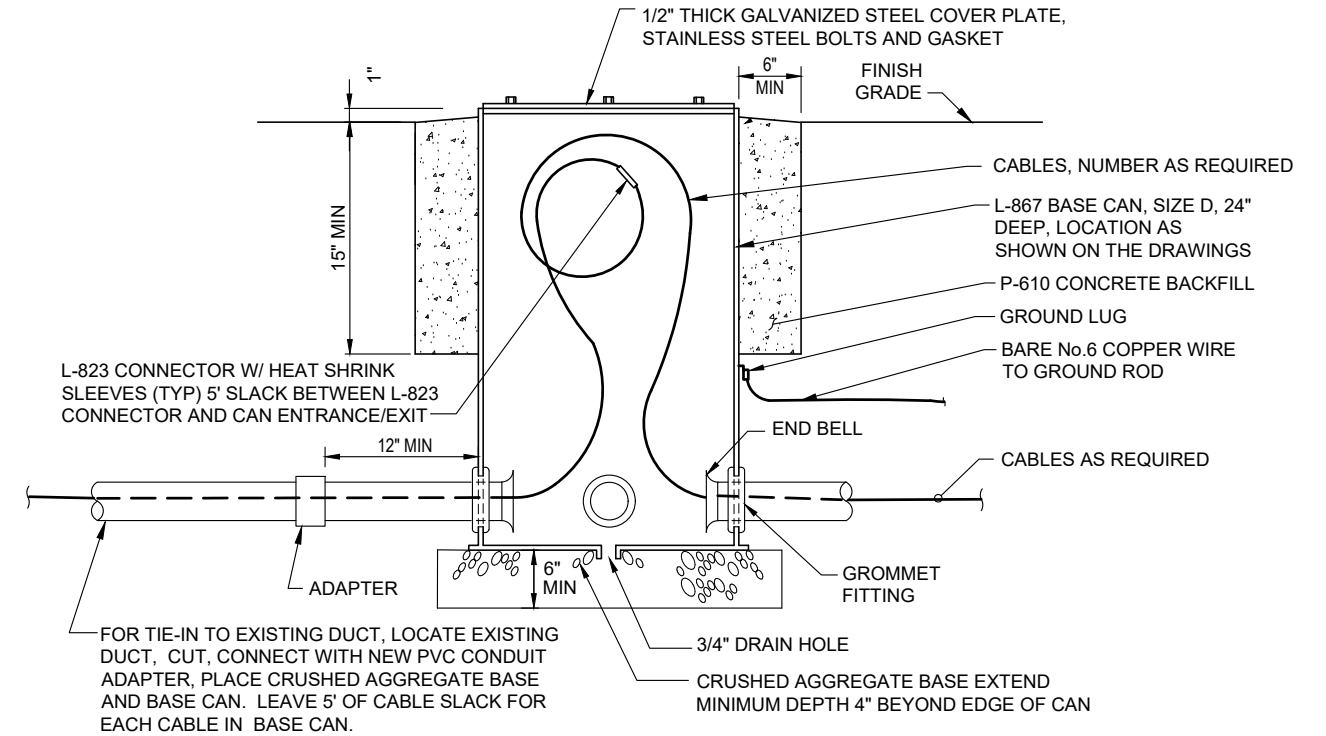
SHEET NO.
9

OF 12

COIL CABLE WITH 2 COMPLETE LOOPS @ DIA = 3' (~10'). BUNDLE AND LABEL. PROVIDE SUFFICIENT SLACK TO LAY BUNDLE ON GRADE

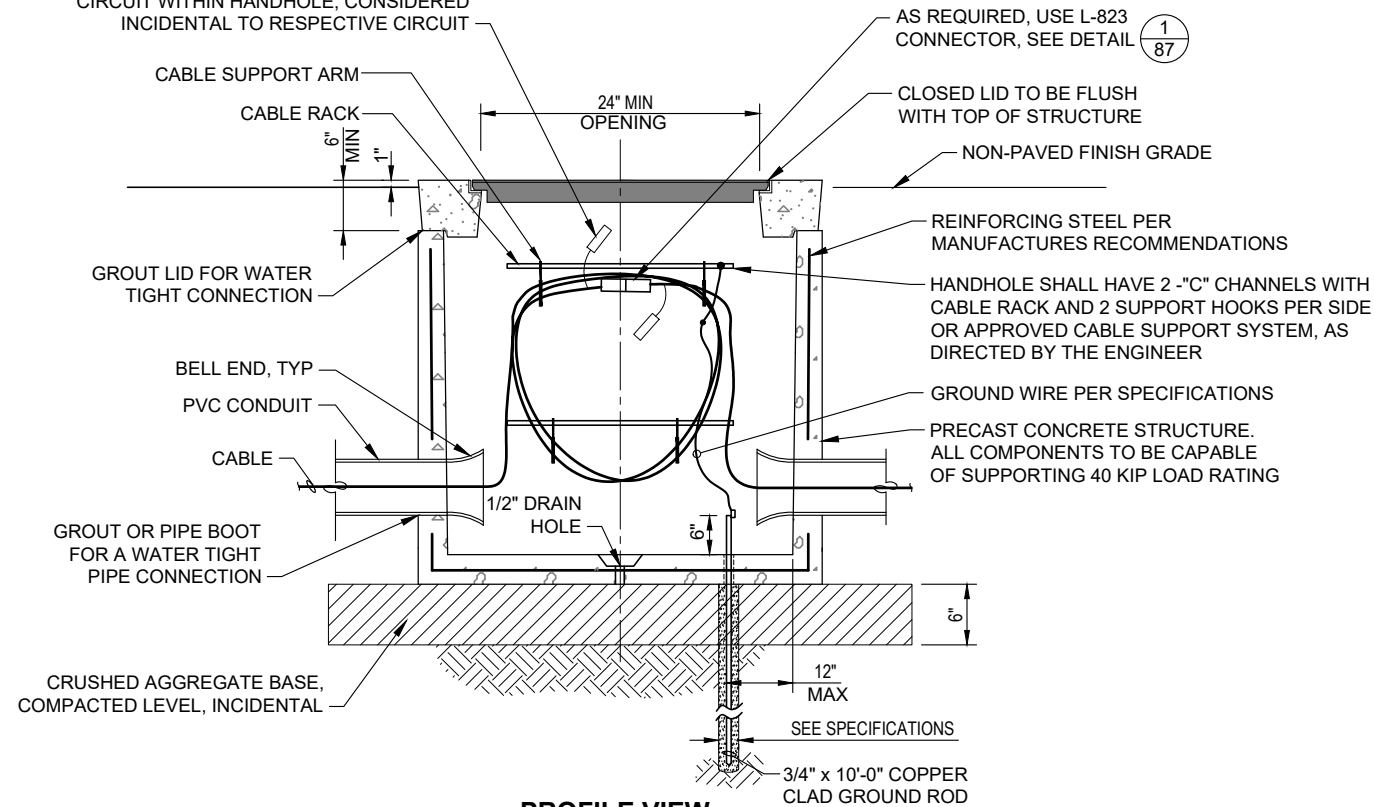


- NOTES:
1. PROVIDE CABLE SUPPORT LEVEL, MINIMUM, WITH SPLICE CENTERED.
 2. NUMBER AND LOCATION OF CONDUITS AND CABLE WILL VARY FOR EACH HANDHOLE. SEE PLAN SHEET.
 3. AS APPLICABLE SEPARATE HIGH AND LOW VOLTAGE CABLES TO OPPOSING WALLS OF HANDHOLE OR AS DIRECTED BY THE ENGINEER.
 4. WHERE CONNECTIONS ARE MADE TO EXISTING CIRCUITS ENSURE SPLICE IS MADE IN HANDHOLE WITH ENOUGH SLACK TO PULL A SPLICE A MINIMUM 18" ABOVE HANDHOLE.
 5. CONTRACTOR TO PROVIDE SHOP DRAWINGS FOR ENGINEERS APPROVAL PRIOR TO ORDERING STRUCTURES.
 6. LID TO HINGE OPEN AWAY FROM RUNWAY.
 7. NEW HANDHOLE LOCATION AS DIRECTED BY ENGINEER. EXTENSION OF EXISTING DUCT BANK CONDUITS TO NEW HANDHOLE PAID FOR BY RESPECTIVE SIZE CONDUIT BID ITEM.



JUNCTION CAN INSTALLATION DETAIL 2/10
NTS

CABLE MARKER TAG, IDENTIFY EACH INDIVIDUAL CIRCUIT WITHIN HANDHOLE. CONSIDERED INCIDENTAL TO RESPECTIVE CIRCUIT



HANDHOLE INSTALLATION DETAIL 1/10
NTS

PRECISION APPROACH
ENGINEERING
5125 Southwest Hout Street
Corvallis, OR 97333
541•754•0043



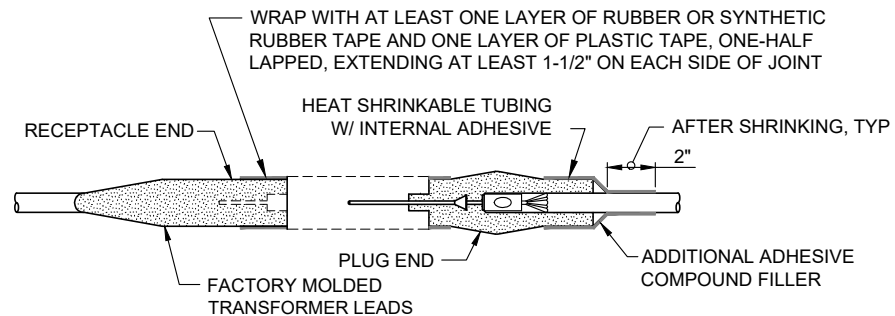
REVISIONS:	DATE	APPD.

DATE: MAR 2021
DESIGN: GWV
DRAWN: JAW
CHECKED: GWV
REVISION NUMBER: 0
SCALE: AS SHOWN

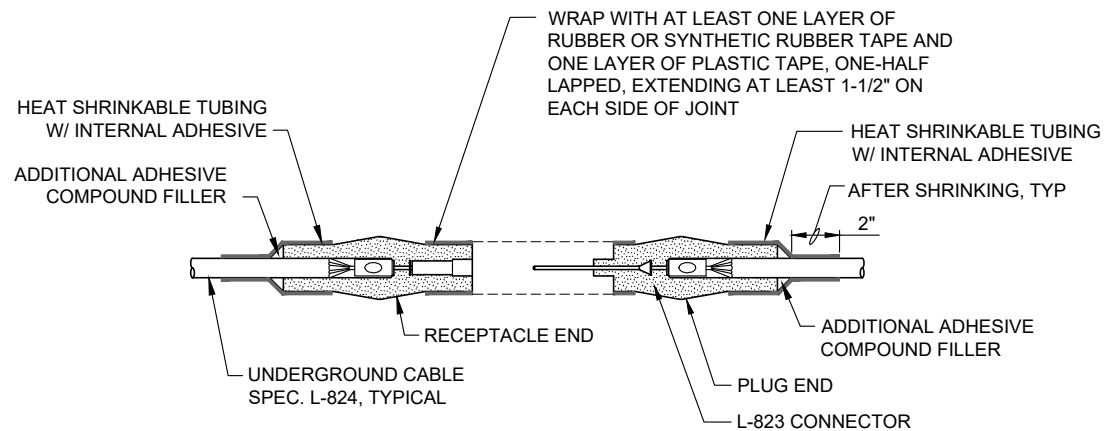
ALBANY MUNICIPAL AIRPORT
AWOS-III P/T IMPROVEMENTS
ELECTRICAL DETAILS
PRECISION APPROACH ENGINEERING, INC.
AIP NO. 3-41-0001-017-2021

PROJECT NUMBER:
ALB006
SHEET NO.
10
OF **12**

03/11/21 - 1:48pm - J\Wade - P:\Alab006 awos040\CAD\DWG\Sheets\ALB006-ELDE.dwg

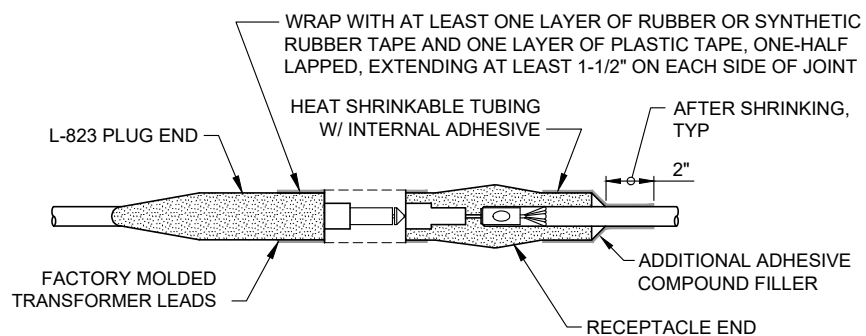


NOTE:
SPICES TO BE USED AT JUNCTION OF HOMERUN WITH LOOP CIRCUIT



CABLE SPLICE - TYPE B
NTS

1
11

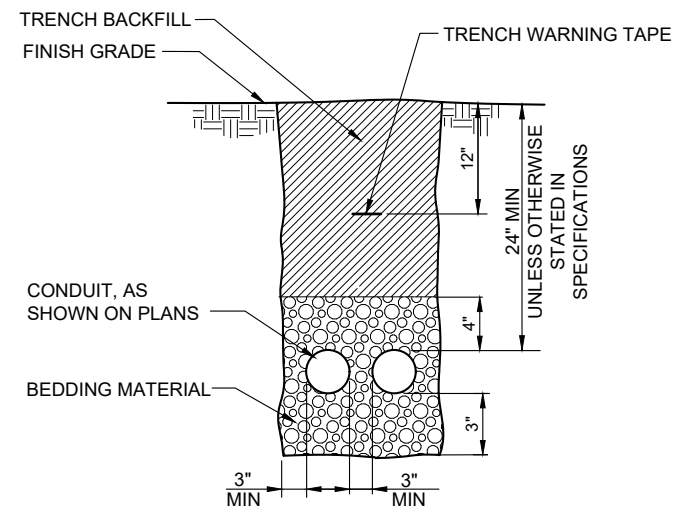


NOTES:

- FOR SPLICES AT LIGHT FIXTURES AND SIGNS.
- INSIDE DIAMETER OF CONNECTOR SHALL PROPERLY MATCH THE OUTSIDE DIAMETER OF CABLE.

CABLE SPLICE - TYPE C
NTS

2
11



NON-PAVED TRENCH DETAIL
NTS

3
11

03/11/21 - 1:48pm - JWade - P:\Alab006_amos\0400CAD\DWG\Sheets\ALB006-ELDE.dwg

PRECISION APPROACH
ENGINEERING
5125 Southwest Hout Street
Corvallis, OR 97333
541•754•0043



REVISIONS:	DATE	APPD.

DATE: MAR 2021
DESIGN: GWV
DRAWN: JAW
CHECKED: GWV
REVISION NUMBER: 0
SCALE: AS SHOWN

ALBANY MUNICIPAL AIRPORT
AWOS-III P/T IMPROVEMENTS
ELECTRICAL DETAILS
PRECISION APPROACH ENGINEERING, INC.
AIP NO. 3-41-0001-017-2021

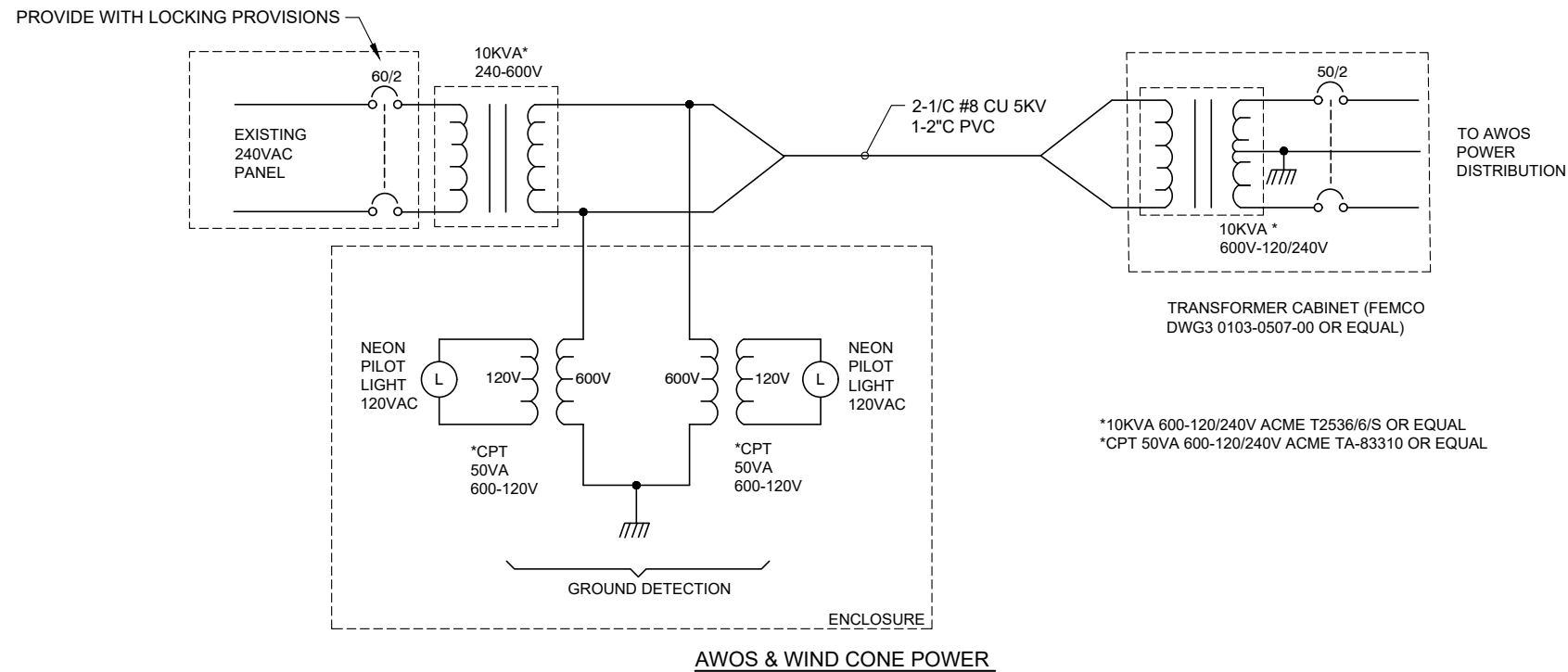
PROJECT NUMBER:
ALB006
SHEET NO.
11
OF **12**

03/11/21 - 1:48pm - J\Wade - P:\Alab006 awos\0400CAD\DWG\Sheets\ALB006-ELDE.dwg

Albany Airport EEB Electrical Panel

CT NO	LOAD	CB	LOAD	L1	L2	LOAD	CB	LOAD	CT NO
1	J Box NE Corner	20	10	15		5	20	Receptacles	2
3	"	20	10		20	10	20	Beacon	4
5	Vent Fan, Lights	20	5	10		5	20	Wind Cone	6
7	VASI	20	16		21	5	20	"	8
9	"	20	16	61		45	70	MIRL	10
11	North REIL	20	5		50	45	70	"	12
13	"	20	5	6		1	15	Control Power	14
15	AWOS (New)	60	6		16	10	30	Gate Panel	16
17	"	60	6	16		10	30	"	18
19		Space			0		Space		20
21		Space		0			Space		22
23		Space			0		Space		24
25		Space		0			Space		26
27		Space			0		Space		28
29		Space		0			Space		30
			Total	108	107				

AWOS Power	Watts
Radio	10
Wind Sensor	0.5
Wind Sensor Heater	72
Data Platform	100
Rain Guage Heater	300
Laser Ceileometer	100
Laser Heater	500
Visibility Sensor	200
Radio	2
TOTAL	1285



PRECISION APPROACH
ENGINEERING
5125 Southwest Hout Street
Corvallis, OR 97333
541•754•0043



REVISIONS:	DATE	APPD.

DATE: MAR 2021
DESIGN: GWV
DRAWN: JAW
CHECKED: GWV
REVISION NUMBER: 0
SCALE: AS SHOWN

ALBANY MUNICIPAL AIRPORT
AWOS-III P/T IMPROVEMENTS

ELECTRICAL DETAILS

PRECISION APPROACH ENGINEERING, INC.
AIP NO. 3-41-0001-017-2021

PROJECT NUMBER:
ALB006

SHEET NO.
12
OF 12