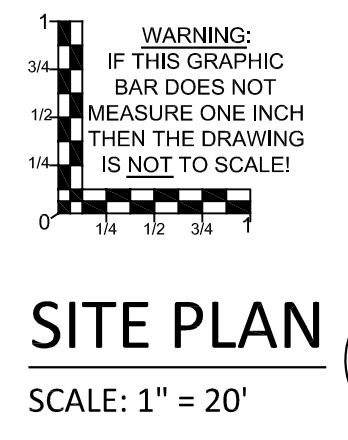


- NOTES:**
- THE BASKETBALL STANDARD AND HOOP SHALL BE INTEGRATED INTO THE FENCE POST LAYOUT. INSTALL A GOOSENECK POST FOR USE AS A SUPPORT AND CONNECTION FOR A BACKBOARD AND HOOP INSTALLATION. REFER TO DETAILS FOR BASKETBALL STANDARDS ON SHEET 7.0.
 - INDICTED FENCE POSTS SHALL BE 24" TALLER THAN THE STANDARD POSTS IN SECTIONS OF FENCE TO ACCOMMODATE FUTURE SPEAKERS. 1-INCH CONDUIT SHALL BE INSTALLED.
 - CONTRACTOR TO COORDINATE THE EXACT SIZE OF THE CONCRETE PAD WITH THE CITY OF ALBANY PARKS AND RECREATION & ALBANY OREGON PICKLEBALL CLUB TO ACCOMMODATE A STORAGE SHED AND PORTABLE RESTROOMS.
 - ALL NET POST SLEEVES IN THE PICKLEBALL COURT AREA SHALL BE SET FLUSH WITH THE TOP OF THE PLAYING SURFACE.

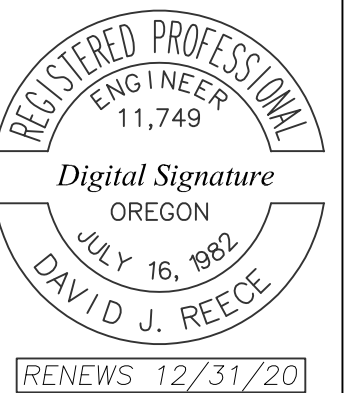
- WATER NOTES:**
- CONNECT NEW 1"Ø WATER SERVICE LINE. CONTRACTOR TO FIELD LOCATE EXISTING SERVICE TO ENGLISH LANGUAGE AND CULTURAL INSTITUTE. ONCE LOCATED, TIE-IN LOCATION TO BE COORDINATED WITH ENGINEER AND L.B.C.C. STAFF. REDUCE TO 1/2"Ø FOR DRINKING FOUNTAIN AND 3/4"Ø FOR YARD HYDRANT.
 - EXTERIOR WATER FOUNTAIN TO BE ELKAY LK4420 FREE STANDING TUBULAR ADA FOUNTAIN WITH FREEZE RESISTANT VALVE SYSTEM OR EQUIVALENT. REFER TO SHEET 7.0 FOR SPECIFICATIONS.
 - INSTALL A 36" FROST PROOF, LOCKABLE YARD HYDRANT (WOODFORD MANUFACTURING OR EQUIVALENT)
 - CONNECT 1-1/2"Ø SCH-40 PVC DISCHARGE FROM FOUNTAIN DRAIN TO THE SEWER SERVICE LINE COMING FROM THE ENGLISH LANGUAGE AND CULTURAL INSTITUTE.



Reece & associates, inc.
321 first avenue east, suite 3a
albany, oregon 97221
phone: 541-926-2428
fax: 541-926-2456

PLANNING SERVICES

ENGINEERING SERVICES



**Lbcc PICKLEBALL IMPROVEMENTS
PICKLEBALL IMPROVEMENT PLAN**

CITY OF ALBANY - PARKS & RECREATION
ALBANY, OR

No.	PLAN REVISIONS	DATE	BY
1		02-17-2020	MJR

R&A PROJECT NO.
COA1902

DATE 01/02/2020
DESIGNED M. RICCIPELLI
ENGINEER D. REECE
CHECKED K. RICCIPELLI
SCALE AS INDICATED

SHEET NUMBER

3.0