



CITY OF ALBANY
Public Works Department

ADDENDUM #1

SS-17-01

COX CREEK INTERCEPTOR IMPROVEMENTS: PHASE 1

In order to clarify the intent of the Specifications and Drawings, the following provisions are provided and shall be considered part of the contract documents.

In order to ensure that all bidders are aware of these provisions, each bidder shall sign this addendum below and attach it to the proposal.

IMPORTANT: Failure to include a signed Addendum could result in the disqualification of your bid.

GENERAL:

- Construction staking, including setting benchmarks on the Waverly Lake Path wall, will be covered by the City. The Contractor shall be responsible for monitoring the wall benchmarks for movement restoring the wall to its original condition if movement occurs. No settlement monitoring on the railroad property is required.
- Contractors shall assume the overhead power lines running parallel along the northern railroad property line must remain live during construction. The Contractor shall be responsible for all costs associated with protecting and/or relocating the overhead lines during construction. The protection and/or relocation of overhead powerlines shall be coordinated with Pacific Power.

CONSTRUCTION DRAWINGS:

Replace Sheet 3 and 8 with the attached revised sheets.

- Sheet No. 3:
 - An existing six-inch PVC sewer lateral was inadvertently left off of the original plans. The new sheet shows the approximate alignment of the lateral, and notes have been added to explain its connection to the new 24" sewer main.
- Sheet No. 6:
 - The Contractor may choose the pipe stick length of the 30-inch PVC sewer mainline to be installed in the 48-inch steel casing. The 18'-20' stick length requirement has been removed from the appropriate note. The pipe insulators shall be installed within 2 feet of each bell and in the middle of each pipe stick regardless of stick length.
- Sheet No. 8:
 - The abandonment symbol at the northwest connection of SSMH #12 has been removed. The existing eight-inch concrete sewer segment is to be connected to SSMH #12 as described in the notes.
 - The note about the Waverly Lake Path wall has been modified to clarify that the City will be setting the survey benchmark, and the Contractor will be responsible for monitoring it.

SCHEDULE OF CONTRACT PRICES:

The following change has been made to the bid item quantities. An updated Schedule of Contract Prices is attached.

- Item No. 54: Connect 6-Inch Private Sewer Lateral to Main – NEW BID ITEM

SECTION III: TECHNICAL SPECIFICATIONS – BID ITEMS:

Revisions are shown in **bold**.

Item No. 41 – Coordinate with Railroad Companies:

See Appendices D through I and Special Provisions

This bid item shall include all coordination with BNSF Railway, Union Pacific Railroad, and Portland & Western Railroad required for work within railroad right-of-way. All railroad related expenses, including but not limited to **scheduling railroad flagging**, preparing and submitting submittals to the railroad, and insurance shall be considered incidental to this bid item. All railroad permit provisions and additional requirements can be found in Appendices D through I. The Contractor shall comply with all provisions of these permits, including insurance and notification of work requirements. The City has obtained the necessary insurance for work within Union Pacific Railroad's right-of-way and is in the process of obtaining the necessary insurance for work within BNSF Railway right-of-way. **The City will cover all railroad flagging costs directly for each railroad company.**

- Union Pacific Railroad – See Appendix D through G
- Portland & Western Railroad – See Appendix H
- BNSF Railway – See Appendix I

Payment for this bid item will be on a lump-sum basis and will include all equipment, labor, materials, and incidentals required to complete the work.

Item No. 52 – Abandon Existing Sewer Lines:

See Special Provisions and Construction Drawings

This bid item includes provision and installation of all specified and unspecified materials necessary to abandon the existing 6-inch, 15-inch, 18-inch, 21-inch, and 27-inch concrete **and PVC** sewer lines in-place as shown on the Construction Drawings. Pipes to be abandoned shall be pumped full of cellular concrete or flowable controlled density fill. The cellular concrete or flowable controlled density fill shall be able to flow through the existing pipes to fill all voids and shall have a minimum compressive strength of 50 psi. The Contractor shall provide a mix design for approval by the Engineer prior to the start of work. The Contractor shall monitor the pumping of cellular concrete or flowable controlled density fill and ensure the material does not overflow.

There is approximately **235** feet of 6-inch pipe, 490 feet of 15-inch pipe, 555 feet of 18-inch pipe, 490 feet of 21-inch pipe, and 590 feet of 27-inch pipe to be abandoned.

Payment for this bid item will be made on a lump-sum basis and shall include all equipment, labor, materials, and incidentals required to complete the work.

NEW BID ITEM - Item No. 54 – Connect 6-Inch Private Sewer Lateral to Main:

See the Special Provisions, Construction Drawings, Standard Drawing No. 411

This bid item includes all labor, equipment, and materials required to make connection between the new 24-inch sewer main and the existing private lateral plumbing extending five feet upstream of the vertical break.

Also included in this bid item, is installation of locate balls centered over the connection at the main within four feet of the finished grade. Locate balls shall be Model 162 as manufactured by Omni Marker™ and green in color.

The Contractor will be responsible for verifying the alignment of the private sewer lateral prior to construction.

Payment for these bid items will be made on a per-each basis and will include all equipment, labor, materials, and incidentals required to complete the work.

Contractor's Signature

Date

Company Name *(please type or print)*

SCHEDULE OF CONTRACT PRICES

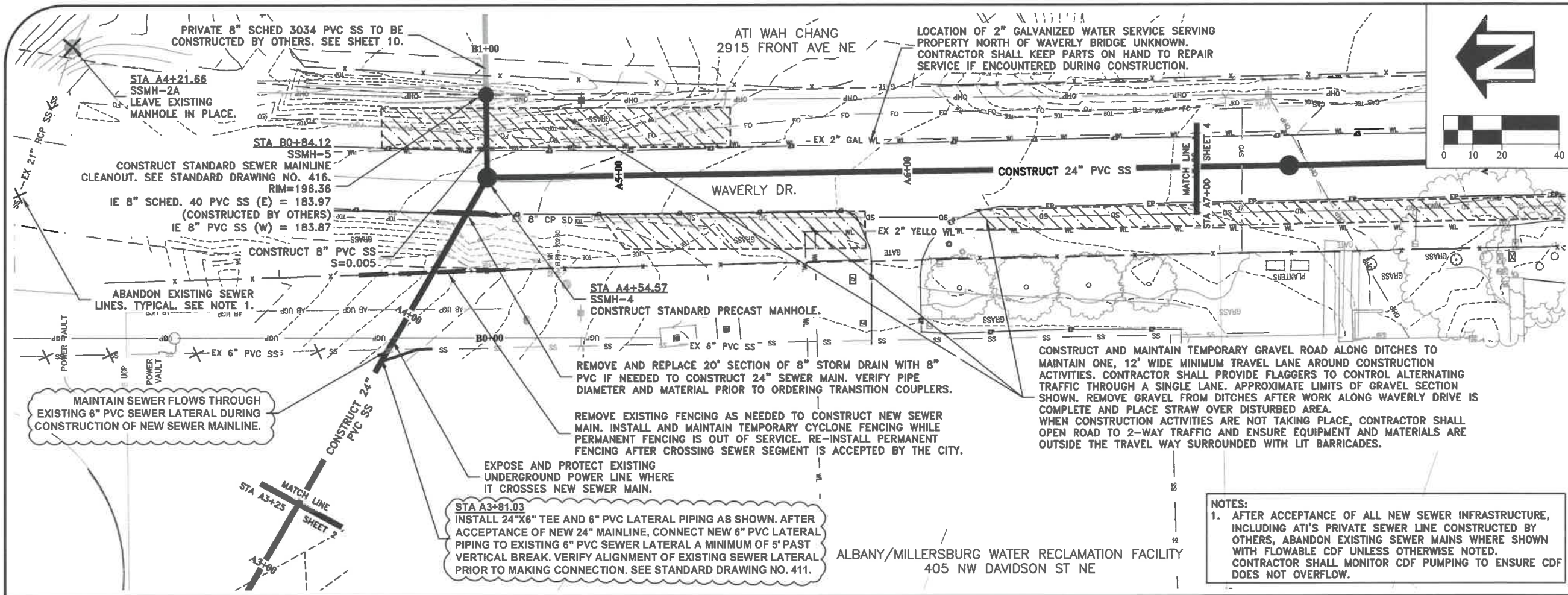
ITEM NO.	BID ITEMS	APPROX. QUANTITY	UNIT OF MEASURE	UNIT PRICE DOLLARS/CTS	TOTAL AMT. DOLLARS/CTS
1	Mobilization	1	Lump Sum		
2	Temporary Traffic Control	1	Lump Sum		
3	Erosion Prevention and Sediment Control	1	Lump Sum		
4	Trench Dewatering	1	Lump Sum		
5	Sewer Bypass Pumping	1	Lump Sum		
6	Overexcavation and Foundation Stabilization	700	Cubic Yard		
7	Tree and Shrub Removal	1	Lump Sum		
8	½-Inch Asphalt Concrete	355	Ton		
9	Fine Grade Subgrade	1,950	Square Yard		
10	5-Inch Asphalt Trench Patch	1,000	Square Yard		
11	10-Inch Asphalt Trench Patch	550	Square Yard		
12	Remove and Replace Standard Curb and Gutter	40	Linear Foot		
13	Straight Curb	150	Linear Foot		
14	Remove and Replace 4-Inch PCC Sidewalk	20	Square Yard		
15	Remove and Replace 8-Inch PCC Sidewalk	125	Square Yard		
16	Remove and Replace 8-Inch PCC Driveway Approach	15	Square Yard		
17	Private Lynch Catch Basin	1	Each		
18	Reconnect 6-Inch PVC Storm Lateral	55	Linear Foot		
19	8-Inch PVC Sewer Main	500	Linear Foot		
20	18-Inch PVC Sewer Main	50	Linear Foot		
21	24-Inch PVC Sewer Main	734	Linear Foot		
22	30-Inch PVC Sewer Main	890	Linear Foot		
23	30-Inch Lined and Coated Ductile Iron Sewer Main	541	Linear Foot		
24	Jack and Bore 48-Inch Steel Casing	240	Linear Foot		
25	Construct Private 6-Inch Sewer Lateral	1	Lump Sum		

ITEM NO.	BID ITEMS	APPROX. QUANTITY	UNIT OF MEASURE	UNIT PRICE DOLLARS/CTS	TOTAL AMT. DOLLARS/CTS
26	6-Inch Sewer Service Connection	1	Lump Sum		
27	Standard Mainline Sewer Cleanout	2	Each		
28	Connect to Existing Manhole	1	Each		
29	Standard Precast Manhole	6	Each		
30	60-Inch Precast Manhole	7	Each		
31	60-Inch Precast Manhole with Outside Drops	1	Each		
32	6-Inch Ductile Iron Water Line	145	Linear Foot		
33	Coordinate 6-Inch x 6-Inch Live Tap	1	Lump Sum		
34	Standard 6-Inch x 6-Inch Connection Assembly	1	Lump Sum		
35	Reconnect 2-Inch Galvanized Railroad Water Service	1	Each		
36	Remove and Reinstall Decorative Light Pole	1	Lump Sum		
37	Remove and Reinstall Electrical Cabinet	1	Lump Sum		
38	Remove and Replace Fencing at Water Reclamation Facility	1	Lump Sum		
39	Temporary Gate Operating System for 3015 Salem Ave SE	1	Lump Sum		
40	Reinstall Electrical Loops and Automatic Gate at 3015 Salem Ave SE	1	Lump Sum		
41	Coordinate with Railroad Companies	1	Lump Sum		
42	Private Landscape Restoration	1	Lump Sum		
43	Hydroseeding	1	Lump Sum		
44	Plant and Establish Street Trees	1	Each		
45	4-Inch Yellow Non-Profiled Thermoplastic Stripe	825	Linear Foot		
46	8-Inch White Non-Profiled Thermoplastic Stripe	15	Linear Foot		
47	Thermoplastic Single Arrow Legend	4	Each		
48	Painted Pavement Markings	1,160	Linear Foot		
49	Raised Reflectorized Pavement Marker	10	Each		
50	Install New Street Signs	4	Each		
51	Abandon Existing Sewer Manhole	5	Each		

ITEM NO.	BID ITEMS	APPROX. QUANTITY	UNIT OF MEASURE	UNIT PRICE DOLLARS/CTS	TOTAL AMT. DOLLARS/CTS
52	Abandon Existing Sewer Lines	1	Lump Sum		
53	Abandon Existing Water Lines	1	Lump Sum		
54	Connect 6-Inch Private Sewer Lateral to Main	1	Each		
SUM OF EXTENDED TOTALS					

NOTE: Subject to change if addition or extensions are in error.

Bidder's Signature	Company Name <i>(please print)</i>	Date
Bidder's Name <i>(please print)</i>	Mailing Address <i>(please print)</i>	CCB License Number
Bidder's Title <i>(please print)</i>	City, State Zip	Federal Tax ID Number
Telephone No.: _____	Fax No.: _____	Email: _____

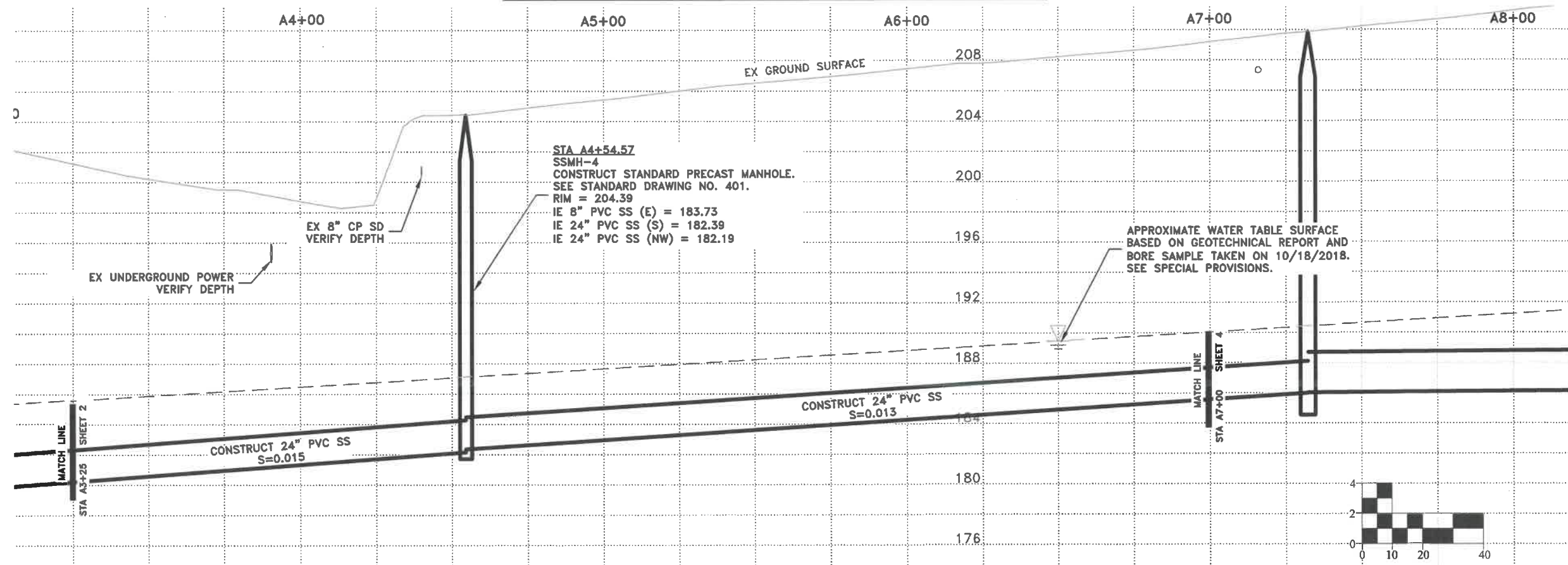


DESIGNED: L. SCHUMACHER	REVISIONS
DRAWN: L. SCHUMACHER	NO: BY:
CHECKED: C. CERKLEWSKI	ADD #1 LLS
DATE: 3/28/2019	DATE: 4/30/2019

PUBLIC WORKS DEPARTMENT
ENGINEERING SERVICES

SS-17-01, COX CREEK INTERCEPTOR IMPROVEMENTS: PHASE 1
COX CREEK SEWER INTERCEPTOR - NORTH WAVERLY DRIVE

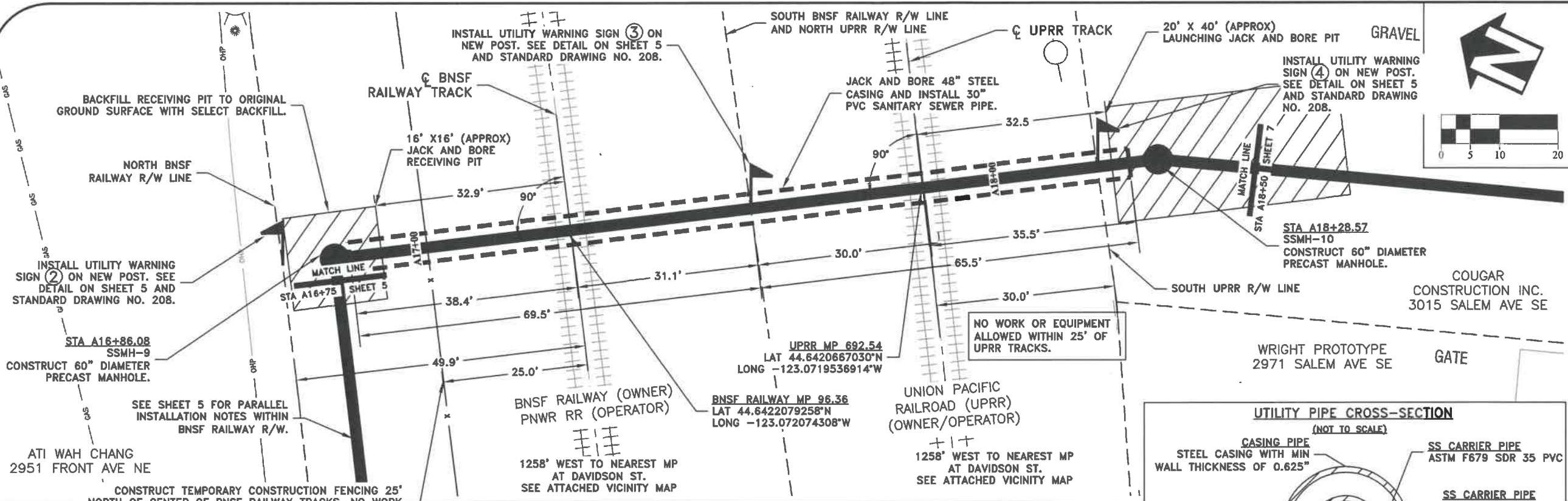
NEW COX CREEK SEWER INTERCEPTOR PROFILE



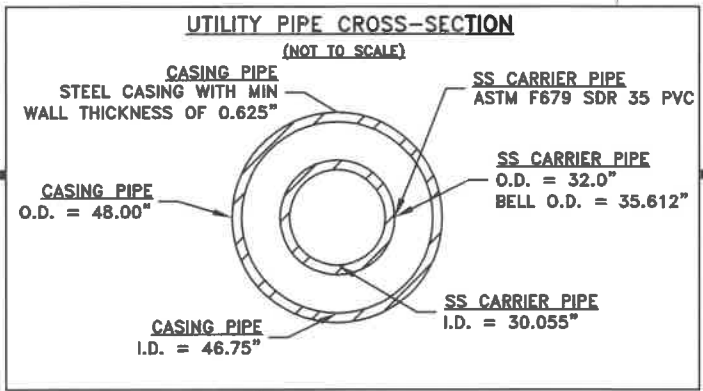
REGISTERED PROFESSIONAL ENGINEER
85930PE
Lori L. Schumacher
OREGON
MARCH 13, 2018
LORI L. SCHUMACHER

EXPIRES: 06/30/2020

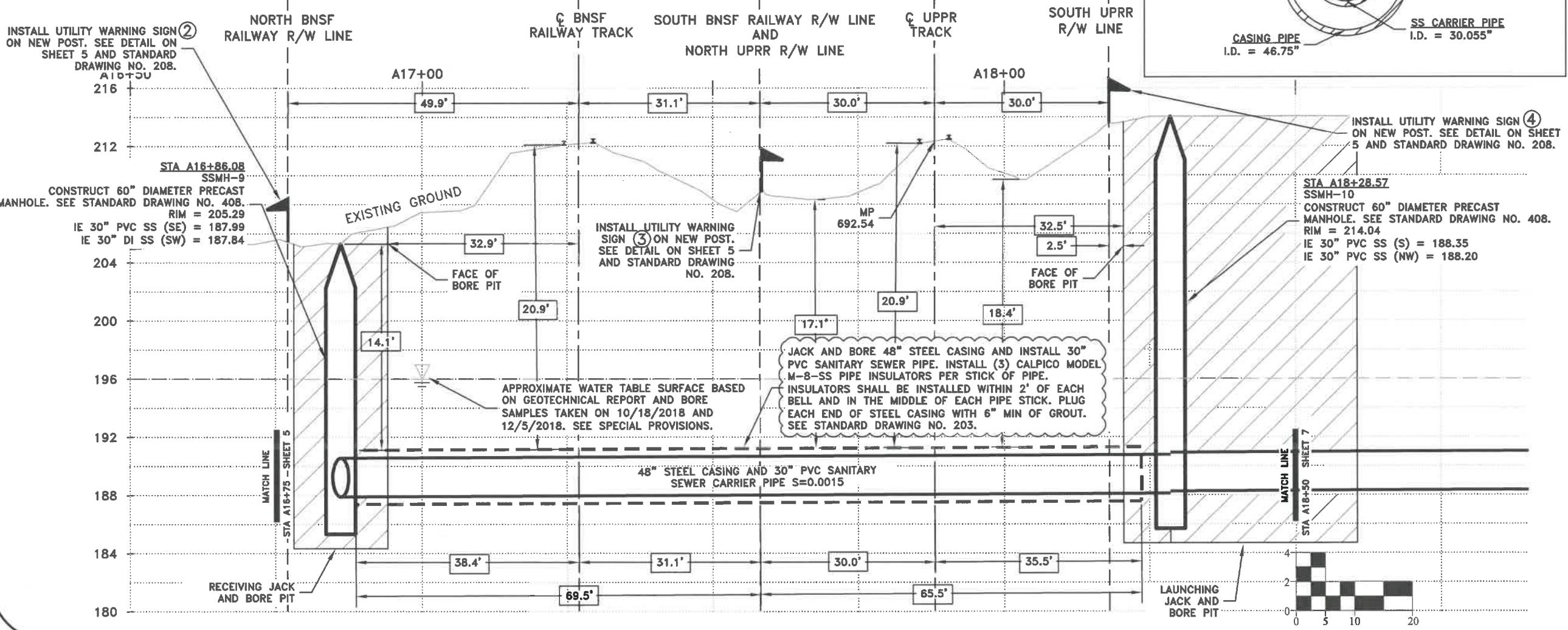
SHEET NO. 3 OF 23
PROJECT NO: SS-17-01
FILE: BASE.DWG



CONSTRUCT TEMPORARY CONSTRUCTION FENCING 25' NORTH OF CENTER OF BNSF RAILWAY TRACKS. NO WORK OR EQUIPMENT ALLOWED WITHIN 25' OF TRACKS WITHOUT RAILROAD FLAGGERS PRESENT. SEE SPECIAL PROVISIONS.



NEW COX CREEK SEWER INTERCEPTOR PROFILE



JACK AND BORE 48" STEEL CASING AND INSTALL 30" PVC SANITARY SEWER PIPE. INSTALL (3) CALPICO MODEL M-8-SS PIPE INSULATORS PER STICK OF PIPE. INSULATORS SHALL BE INSTALLED WITHIN 2' OF EACH BELL AND IN THE MIDDLE OF EACH PIPE STICK. PLUG EACH END OF STEEL CASING WITH 6" MIN OF GROUT. SEE STANDARD DRAWING NO. 203.

DESIGNED: L. SCHUMACHER
 DRAWN: L. SCHUMACHER
 CHECKED: C. CERKLEWSKI
 DATE: 3/28/2019

REVISIONS	NO.	BY:

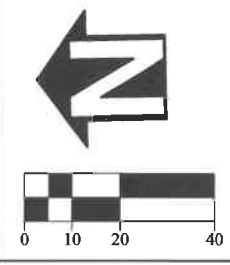
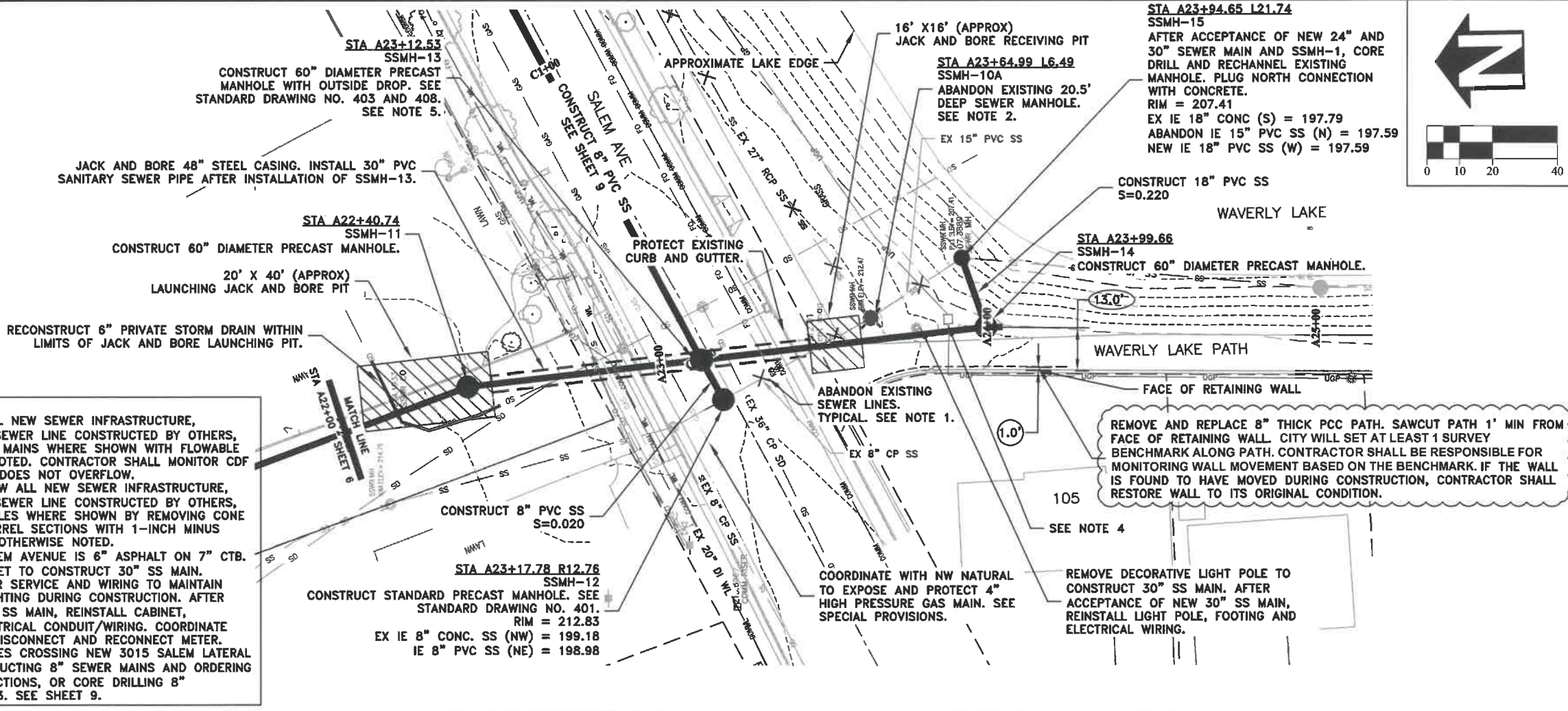
PUBLIC WORKS DEPARTMENT
 ENGINEERING SERVICES

SS-17-01, COX CREEK INTERCEPTOR IMPROVEMENTS: PHASE 1
 COX CREEK SEWER INTERCEPTOR - RAILROAD ROW (CROSSING)



EXPIRES: 06/30/2020

SHEET NO. 6 OF 23
 PROJECT NO: SS-17-01
 FILE: BASE.DWG



- NOTES:**
- AFTER ACCEPTANCE OF ALL NEW SEWER INFRASTRUCTURE, INCLUDING ATI'S PRIVATE SEWER LINE CONSTRUCTED BY OTHERS, ABANDON EXISTING SEWER MAINS WHERE SHOWN WITH FLOWABLE CDF UNLESS OTHERWISE NOTED. CONTRACTOR SHALL MONITOR CDF PUMPING TO ENSURE CDF DOES NOT OVERFLOW.
 - AFTER ACCEPTANCE OF NEW ALL NEW SEWER INFRASTRUCTURE, INCLUDING ATI'S PRIVATE SEWER LINE CONSTRUCTED BY OTHERS, ABANDON EXISTING MANHOLES WHERE SHOWN BY REMOVING CONE SECTIONS AND FILLING BARREL SECTIONS WITH 1-INCH MINUS SELECT BACKFILL UNLESS OTHERWISE NOTED.
 - ROAD SECTION ALONG SALEM AVENUE IS 6" ASPHALT ON 7" CTB.
 - REMOVE ELECTRICAL CABINET TO CONSTRUCT 30" SS MAIN. INSTALL TEMPORARY POWER SERVICE AND WIRING TO MAINTAIN POWER TO LAKE PATH LIGHTING DURING CONSTRUCTION. AFTER ACCEPTANCE OF NEW 30" SS MAIN, REINSTALL CABINET, CONCRETE PAD, AND ELECTRICAL CONDUIT/WIRING. COORDINATE WITH PACIFIC POWER TO DISCONNECT AND RECONNECT METER.
 - VERIFY INVERTS OF UTILITIES CROSSING NEW 3015 SALEM LATERAL SERVICE PRIOR TO CONSTRUCTING 8" SEWER MAINS AND ORDERING SSMH-13 WITH 8" CONNECTIONS, OR CORE DRILLING 8" CONNECTIONS ON SSMH-13. SEE SHEET 9.

DESIGNED: L. SCHUMACHER	REVISIONS
DRAWN: L. SCHUMACHER	NO: BY:
CHECKED: C. CERKLEWSKI	ADD #1: LLS
DATE: 3/28/2019	DATE: 4/30/2019

PUBLIC WORKS DEPARTMENT
ENGINEERING SERVICES

SS-17-01, COX CREEK INTERCEPTOR IMPROVEMENTS: PHASE 1
COX CREEK SEWER INTERCEPTOR - NORTH WAVERLY LAKE

NEW COX CREEK SEWER INTERCEPTOR PROFILE

