

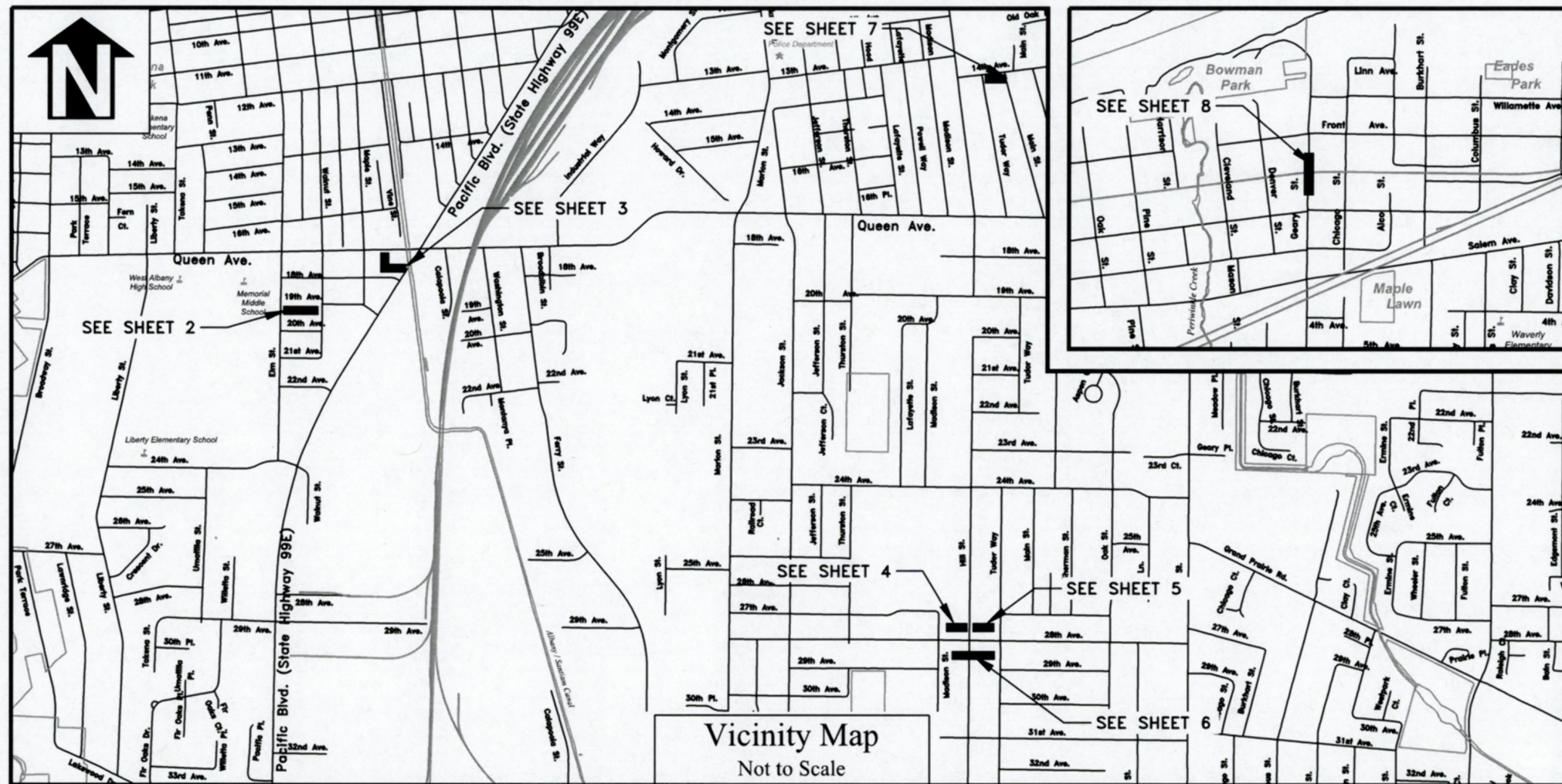
CITY OF ALBANY

SS-19-01-B, 2019 CURED-IN-PLACE PIPE PROJECTS

SHEET INDEX	
Sheet Number	Sheet Title
1	COVER
2	PIPE ID 7281
3	PIPE ID 7284 & 7289
4	PIPE ID 5014 & 114698
5	PIPE ID 5015
6	PIPE ID 6923
7	PIPE ID 5935
8	PIPE ID 5597

LEGEND

	EXISTING SEWER MANHOLE, DEAD END OR MAINLINE CLEANOUT CONNECTED TO SEGMENT BEING REHABILITATED
	EXISTING SEWER MANHOLE, DEAD END OR MAINLINE CLEANOUT
	EXISTING SEWER LINE
	EXISTING PRIVATE CLEANOUT
	NEW PRIVATE CLEANOUT
	NEW PROPERTY LINE CLEANOUT
	CURED-IN-PLACE PIPE SEWER MAINLINE
	NEW PRIVATE SEWER LATERAL
	SEWER LATERAL CONNECTION TO BE ABANDONED



GENERAL NOTES

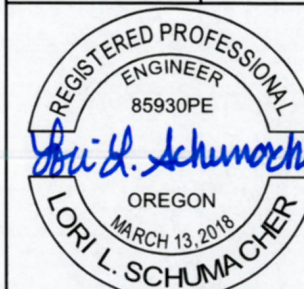
- ALL CONSTRUCTION SHALL CONFORM TO THE CITY OF ALBANY STANDARD CONSTRUCTION SPECIFICATIONS AND ASSOCIATED STANDARD DRAWINGS. THE CURRENT VERSION OF THE CITY OF ALBANY STANDARD CONSTRUCTION SPECIFICATIONS CAN BE FOUND ON THE CITY'S WEBSITE AT WWW.CITYOFALBANY.NET.
- UTILITIES SHOWN ARE FOR REFERENCE ONLY. FOR A FIELD LOCATE, CALL THE UTILITIES NOTIFICATIONS CENTER AT 1-800-332-2344.
- OPERATING ACCESS FOR CITY MAINTENANCE PERSONNEL TO EXISTING AND NEW WATER VALVES AND MANHOLES SHALL BE CONTINUOUSLY MAINTAINED BY THE CONTRACTOR DURING ALL CONSTRUCTION ACTIVITIES.
- CONTRACTOR SHALL VERIFY ALL EXISTING PIPE ELEVATIONS, PIPE DIAMETERS, AND PIPE MATERIALS AT CONNECTION AND ABANDONMENT LOCATIONS PRIOR TO CONSTRUCTION. ANY DISCREPANCIES SHALL BE REPORTED TO ENGINEER PRIOR TO BEGINNING WORK.
- ATTENTION: OREGON LAW REQUIRES YOU TO FOLLOW RULES ADOPTED BY THE OREGON UTILITY NOTIFICATION CENTER. THOSE RULES ARE SET FORTH IN OAR 952-001-0010 THROUGH OAR 952-001-0090. YOU MAY OBTAIN COPIES OF THE RULES BY CALLING THE CENTER. (NOTE: THE TELEPHONE NUMBER FOR THE OREGON UTILITY NOTIFICATION CENTER IS (503) 232-1987).
- CONTRACTOR SHALL BE RESPONSIBLE FOR PROPER INSTALLATION AND MAINTENANCE OF ALL EROSION PREVENTION SEDIMENT CONTROL (EPSC) MEASURES IN ACCORDANCE WITH LOCAL, STATE, AND FEDERAL REGULATIONS UNTIL ALL CONSTRUCTION IS COMPLETED AND APPROVED BY THE CITY OF ALBANY, AND VEGETATION/LANDSCAPING IS ESTABLISHED. FOR GUIDANCE, REFER TO THE CITY OF ALBANY EPSC MANUAL WHICH CAN BE FOUND AT WWW.CITYOFALBANY.NET.
- CONTRACTOR SHALL VERIFY AND EXPOSE ALL PRIVATE LATERAL CONNECTIONS AT THE MAIN PRIOR TO CONSTRUCTION. ANY DISCREPANCIES REGARDING PIPE DIAMETER AND MATERIAL SHALL BE REPORTED TO THE ENGINEER PRIOR TO BEGINNING MAINLINE CONSTRUCTION.
- PIPE AND MATERIALS INSTALLED ON PRIVATE PROPERTY SHALL BE IN ACCORDANCE WITH THE CURRENT OREGON PLUMBING SPECIALTY CODE.
- CONTRACTOR SHALL OBTAIN PLUMBING PERMITS FROM THE CITY OF ALBANY BUILDING DEPARTMENT WHEN WORK EXTENDS ONTO PRIVATE PROPERTY FROM THE SEWER MAIN.
- ALL PRIVATE SERVICE LATERALS SHOWN TO BE REPLACED SHALL BE PIPE BURST UNLESS OTHERWISE NOTED ON THE PLANS OR AS SPECIFIED BY THE ENGINEER.
- ALL SEWER MAINS SHALL BE REHABILITATED USING CURED-IN-PLACE PIPE. SEE SPECIAL PROVISIONS.

SCALE VARIES ON
INDIVIDUAL SHEETS

DESIGNED: L. SCHUMACHER
DRAWN: L. SCHUMACHER
CHECKED: C. CERKLEWSKI
DATE: 4/25/2019

REVISIONS
NO: BY: DATE:

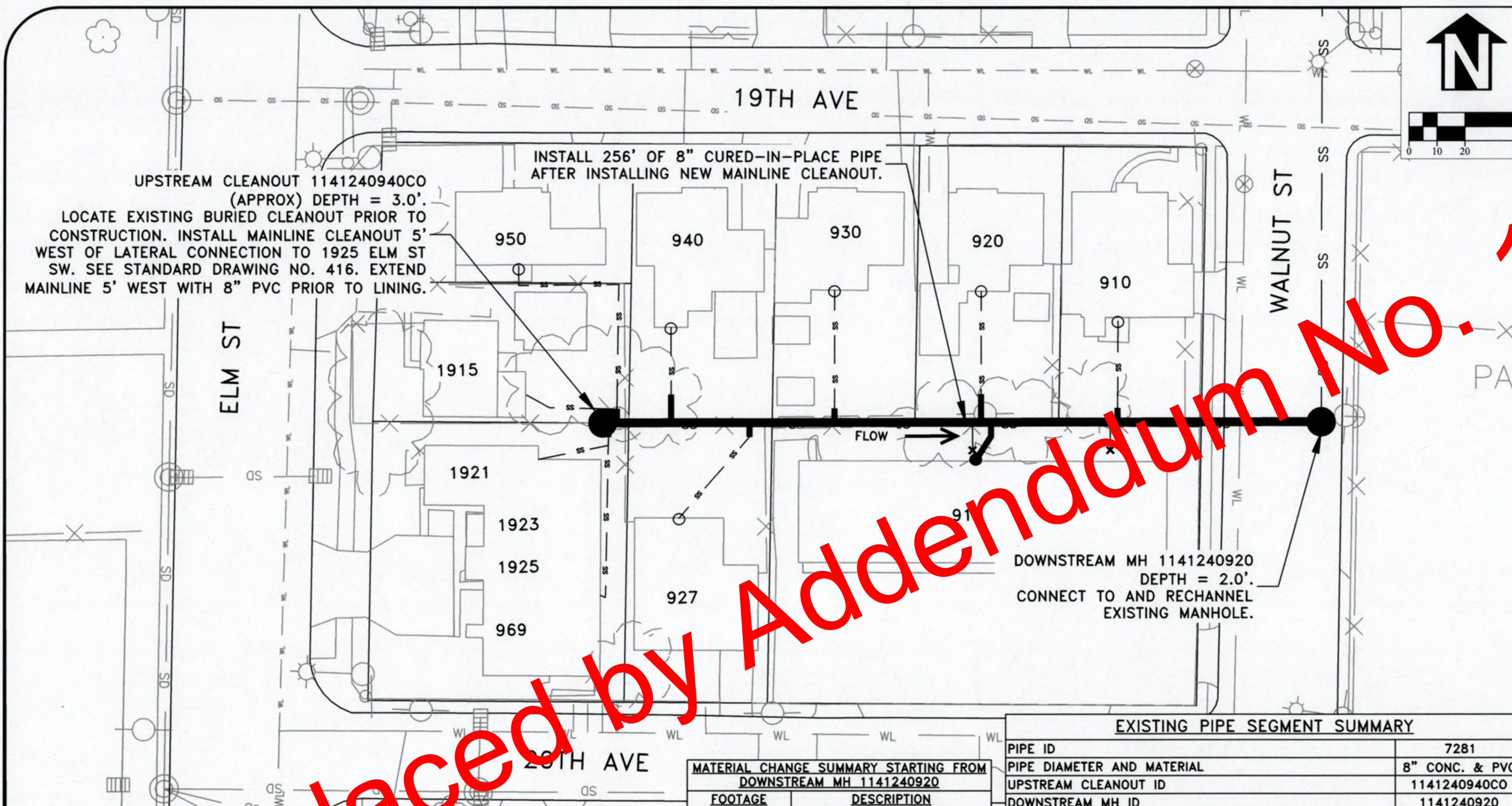
PUBLIC WORKS DEPARTMENT
ENGINEERING SERVICES



EXPIRES: 06/30/2020

SHEET NO. 1 OF 8
PROJECT NO: SS-19-01-B
FILE: FILENAME.DWG

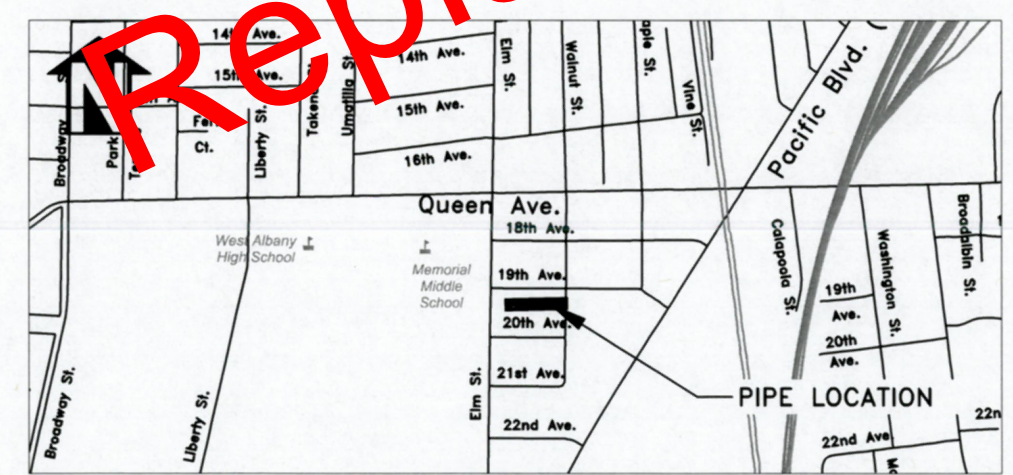
SS-19-01-B, 2019 CURED-IN-PLACE PIPE PROJECTS



UPSTREAM CLEANOUT 1141240940CO
(APPROX) DEPTH = 3.0'.
LOCATE EXISTING BURIED CLEANOUT PRIOR TO
CONSTRUCTION. INSTALL MAINLINE CLEANOUT 5'
WEST OF LATERAL CONNECTION TO 1925 ELM ST
SW. SEE STANDARD DRAWING NO. 416. EXTEND
MAINLINE 5' WEST WITH 8" PVC PRIOR TO LINING.

INSTALL 256' OF 8" CURED-IN-PLACE PIPE
AFTER INSTALLING NEW MAINLINE CLEANOUT.

DOWNSTREAM MH 1141240920
DEPTH = 2.0'.
CONNECT TO AND RECHANNEL
EXISTING MANHOLE.



VICINITY MAP

**MATERIAL CHANGE SUMMARY STARTING FROM
DOWNSTREAM MH 1141240920**

FOOTAGE	DESCRIPTION
68'-73'	PVC SPOT REPAIR AND MAINLINE TEE
99'-101'	PVC SPOT REPAIR
127'-131'	PVC SPOT REPAIR
172'-END	PVC SPOT REPAIR

EXISTING PIPE SEGMENT SUMMARY

PIPE ID	7281
PIPE DIAMETER AND MATERIAL	8" CONC. & PVC
UPSTREAM CLEANOUT ID	1141240940CO
DOWNSTREAM MH ID	1141240920
TOTAL LENGTH (FT)	256
TOTAL NUMBER OF RECONNECTED SERVICES	9
TOTAL NUMBER OF PIPE BURST LATERAL REPLACEMENTS	0
TOTAL NUMBER OF OPEN TRENCH LATERAL REPLACEMENTS	3

LATERAL SUMMARY STARTING FROM DOWNSTREAM MH 1141240920

FOOTAGE	ACTION	PROPERTY SERVED	PRIVATE SEWER LATERAL CONSTRUCTION NOTES
72.7'R	RECONNECT	910 19TH AVE SW	RECONNECT LATERAL TO MAIN AS SPECIFIED
75.4'L	ABANDON	-	-
117.5'L	RECONNECT	919 20TH AVE SW	OPEN TRENCH LATERAL IN PLACE PRIOR TO LINING
121.1'R	RECONNECT	920 19TH AVE SW	REPLACE BROKEN SECTION OF LATERAL AT MAIN PRIOR TO LINING
124.2'L	ABANDON	-	-
173.6'R	RECONNECT	930 19TH AVE SW	RECONNECT LATERAL TO MAIN AS SPECIFIED
203.7'L	RECONNECT	927 20TH AVE SW	RECONNECT LATERAL TO MAIN AS SPECIFIED
231.6'R	RECONNECT	940 19TH AVE SW	REPLACE BROKEN SECTION OF LATERAL AT MAIN PRIOR TO LINING
251.0'R	RECONNECT	950 19TH AVE SW	RECONNECT LATERAL TO MAIN AS SPECIFIED
252.8'R	RECONNECT	1915 ELM ST SW	RECONNECT LATERAL TO MAIN AS SPECIFIED
254.0'L	RECONNECT	1925 ELM ST SW	RECONNECT LATERAL TO MAIN AS SPECIFIED

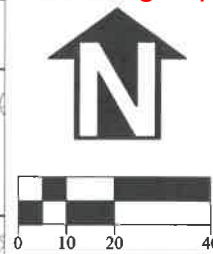
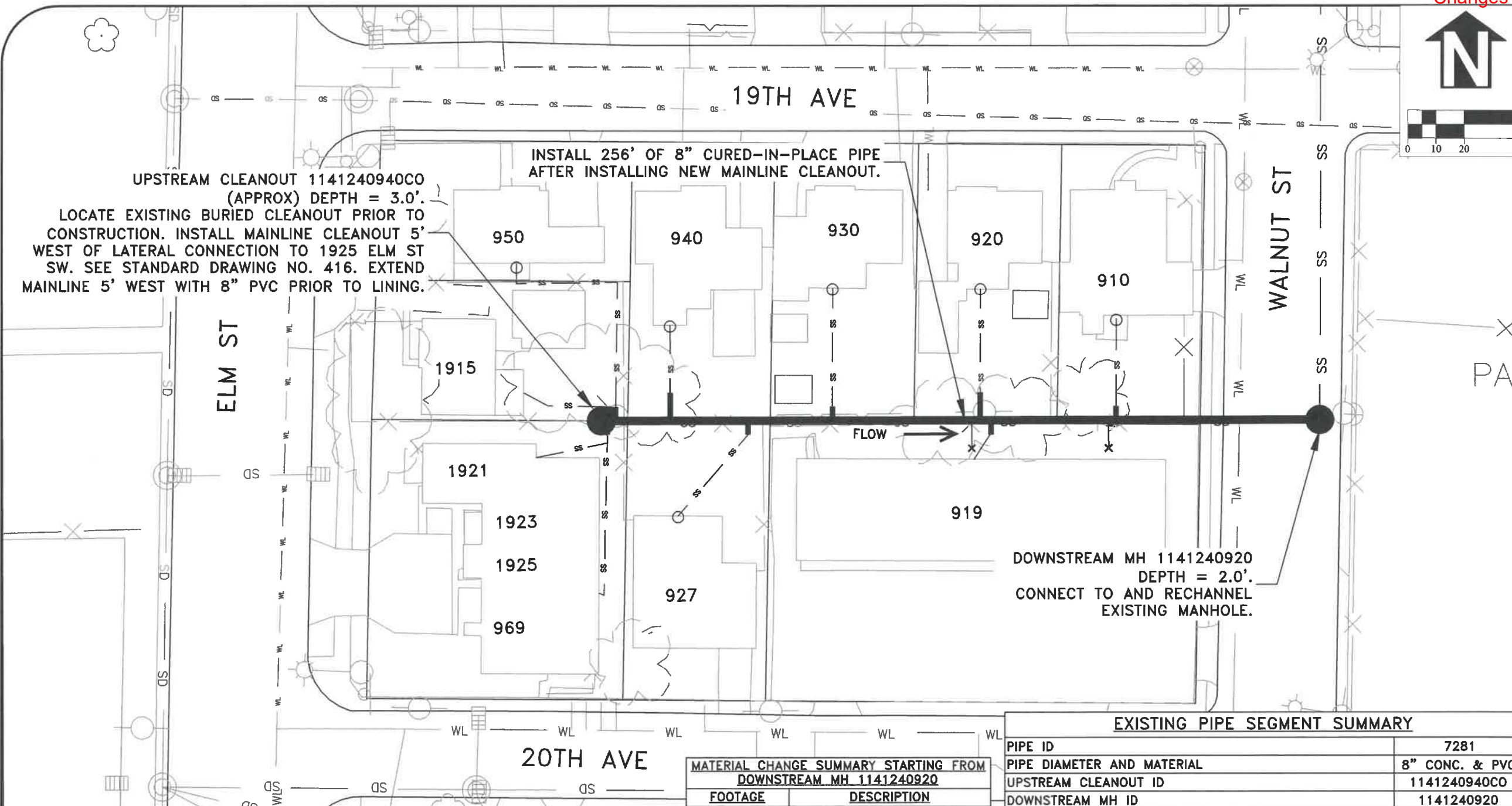
Replaced by Addendum No. 1

DESIGNED: L. SCHUMACHER	REVISIONS
DRAWN: L. SCHUMACHER	NO: --
CHECKED: C. CERKLEWSKI	BY: --
DATE: 4/25/2019	DATE: --

**PUBLIC WORKS DEPARTMENT
ENGINEERING SERVICES**

SS-19-01-B, 2019 CURED-IN-PLACE PIPE PROJECTS
PIPE ID 7281





UPSTREAM CLEANOUT 1141240940CO
(APPROX) DEPTH = 3.0'.
LOCATE EXISTING BURIED CLEANOUT PRIOR TO
CONSTRUCTION. INSTALL MAINLINE CLEANOUT 5'
WEST OF LATERAL CONNECTION TO 1925 ELM ST
SW. SEE STANDARD DRAWING NO. 416. EXTEND
MAINLINE 5' WEST WITH 8" PVC PRIOR TO LINING.

INSTALL 256' OF 8" CURED-IN-PLACE PIPE
AFTER INSTALLING NEW MAINLINE CLEANOUT.

DOWNSTREAM MH 1141240920
DEPTH = 2.0'.
CONNECT TO AND RECHANNEL
EXISTING MANHOLE.

EXISTING PIPE SEGMENT SUMMARY

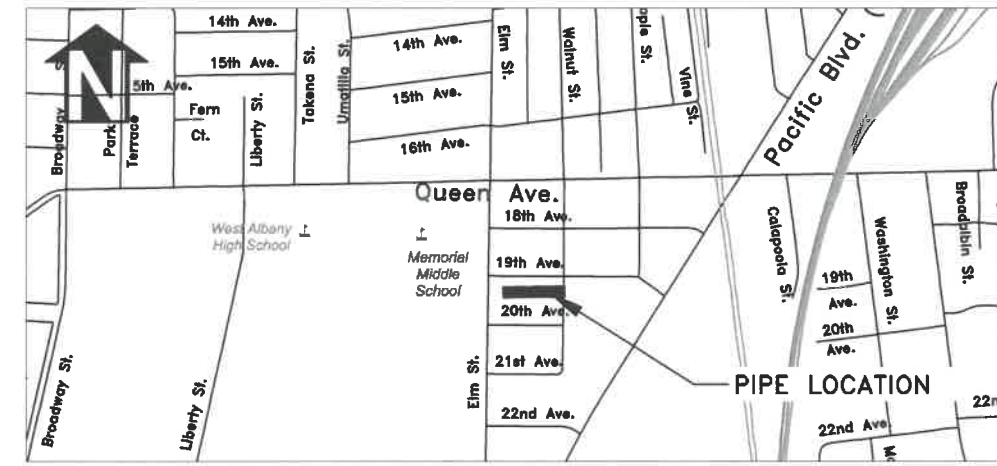
PIPE ID	7281
PIPE DIAMETER AND MATERIAL	8" CONC. & PVC
UPSTREAM CLEANOUT ID	1141240940CO
DOWNSTREAM MH ID	1141240920
TOTAL LENGTH (FT)	256
TOTAL NUMBER OF RECONNECTED SERVICES	9
TOTAL NUMBER OF PIPE BURST LATERAL REPLACEMENTS	0
TOTAL NUMBER OF OPEN TRENCH LATERAL REPLACEMENTS	3 2

**MATERIAL CHANGE SUMMARY STARTING FROM
DOWNSTREAM MH 1141240920**

FOOTAGE	DESCRIPTION
68'-73'	PVC SPOT REPAIR AND MAINLINE TEE
99'-101'	PVC SPOT REPAIR
127'-131'	PVC SPOT REPAIR
172'-END	PVC SPOT REPAIR

LATERAL SUMMARY STARTING FROM DOWNSTREAM MH 1141240920

FOOTAGE	ACTION	PROPERTY SERVED	PRIVATE SEWER LATERAL CONSTRUCTION NOTES
72.7'R	RECONNECT	910 19TH AVE SW	RECONNECT LATERAL TO MAIN AS SPECIFIED
75.4'L	ABANDON	-	-
117.5'L	RECONNECT	919 20TH AVE SW	RECONNECT LATERAL TO MAIN AS SPECIFIED
121.1'R	RECONNECT	920 19TH AVE SW	REPLACE BROKEN SECTION OF LATERAL AT MAIN PRIOR TO LINING
124.2'L	ABANDON	-	-
173.6'R	RECONNECT	930 19TH AVE SW	RECONNECT LATERAL TO MAIN AS SPECIFIED
203.7'L	RECONNECT	927 20TH AVE SW	RECONNECT LATERAL TO MAIN AS SPECIFIED
231.6'R	RECONNECT	940 19TH AVE SW	REPLACE BROKEN SECTION OF LATERAL AT MAIN PRIOR TO LINING
251.0'R	RECONNECT	950 19TH AVE SW	RECONNECT LATERAL TO MAIN AS SPECIFIED
252.8'R	RECONNECT	1915 ELM ST SW	RECONNECT LATERAL TO MAIN AS SPECIFIED
254.0'L	RECONNECT	1925 ELM ST SW	RECONNECT LATERAL TO MAIN AS SPECIFIED



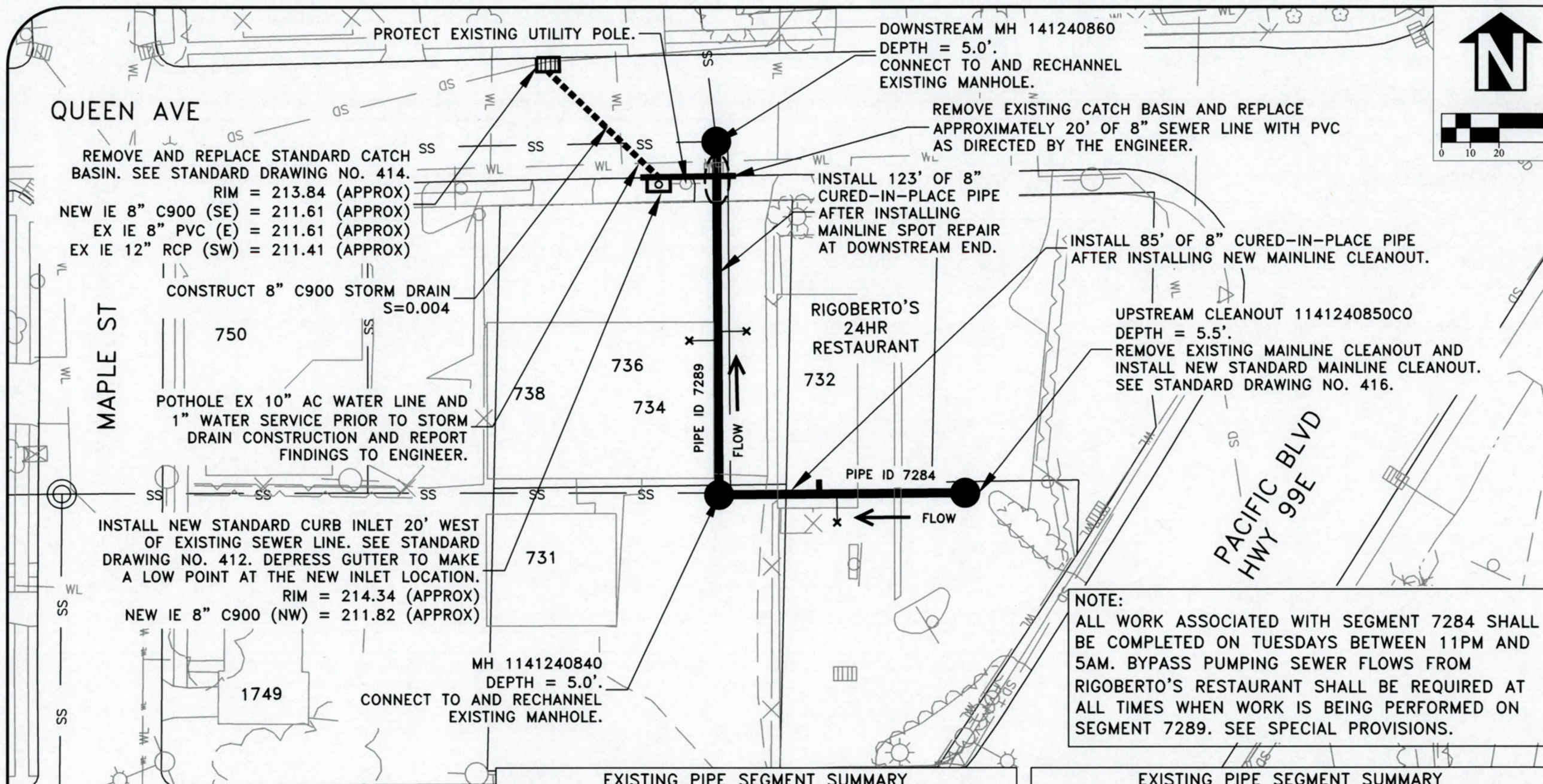
VICINITY MAP

DESIGNED: L. SCHUMACHER	REVISIONS
DRAWN: L. SCHUMACHER	NO: BY:
CHECKED: C. CERKLEWSKI	DATE: 4/25/2019
DATE: 5/6/2019	ADD #1

**PUBLIC WORKS DEPARTMENT
ENGINEERING SERVICES**

**SS-19-01-B, 2019 CURED-IN-PLACE PIPE PROJECTS
PIPE ID 7281**





QUEEN AVE

REMOVE AND REPLACE STANDARD CATCH BASIN. SEE STANDARD DRAWING NO. 414.
 RIM = 213.84 (APPROX)
 NEW IE 8" C900 (SE) = 211.61 (APPROX)
 EX IE 8" PVC (E) = 211.61 (APPROX)
 EX IE 12" RCP (SW) = 211.41 (APPROX)

CONSTRUCT 8" C900 STORM DRAIN
 S=0.004

POTHOLE EX 10" AC WATER LINE AND
 1" WATER SERVICE PRIOR TO STORM
 DRAIN CONSTRUCTION AND REPORT
 FINDINGS TO ENGINEER.

INSTALL NEW STANDARD CURB INLET 20' WEST
 OF EXISTING SEWER LINE. SEE STANDARD
 DRAWING NO. 412. DEPRESS GUTTER TO MAKE
 A LOW POINT AT THE NEW INLET LOCATION.
 RIM = 214.34 (APPROX)
 NEW IE 8" C900 (NW) = 211.82 (APPROX)

MH 1141240840
 DEPTH = 5.0'.
 CONNECT TO AND RECHANNEL
 EXISTING MANHOLE.

DOWNSTREAM MH 141240860
 DEPTH = 5.0'.
 CONNECT TO AND RECHANNEL
 EXISTING MANHOLE.

REMOVE EXISTING CATCH BASIN AND REPLACE
 APPROXIMATELY 20' OF 8" SEWER LINE WITH PVC
 AS DIRECTED BY THE ENGINEER.

INSTALL 123' OF 8"
 CURED-IN-PLACE PIPE
 AFTER INSTALLING
 MAINLINE SPOT REPAIR
 AT DOWNSTREAM END.

INSTALL 85' OF 8" CURED-IN-PLACE PIPE
 AFTER INSTALLING NEW MAINLINE CLEANOUT.

UPSTREAM CLEANOUT 1141240850C0
 DEPTH = 5.5'.
 REMOVE EXISTING MAINLINE CLEANOUT AND
 INSTALL NEW STANDARD MAINLINE CLEANOUT.
 SEE STANDARD DRAWING NO. 416.

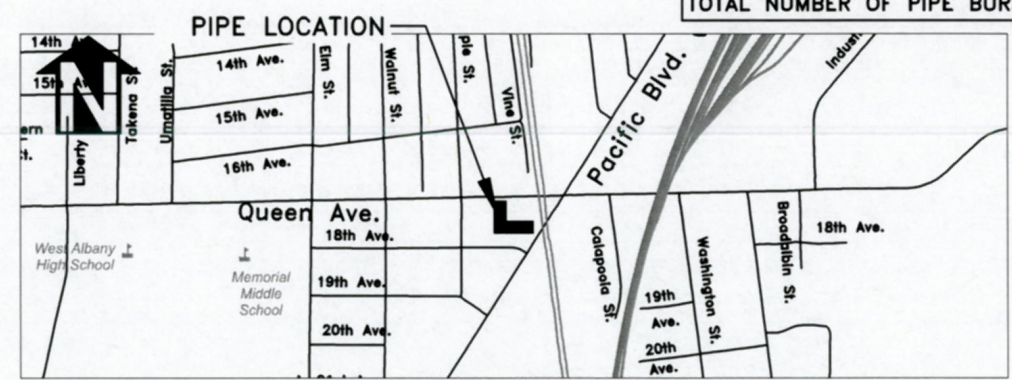
NOTE:
 ALL WORK ASSOCIATED WITH SEGMENT 7284 SHALL
 BE COMPLETED ON TUESDAYS BETWEEN 11PM AND
 5AM. BYPASS PUMPING SEWER FLOWS FROM
 RIGOBERTO'S RESTAURANT SHALL BE REQUIRED AT
 ALL TIMES WHEN WORK IS BEING PERFORMED ON
 SEGMENT 7289. SEE SPECIAL PROVISIONS.

EXISTING PIPE SEGMENT SUMMARY

PIPE ID	7289
PIPE DIAMETER AND MATERIAL	8" VCP
UPSTREAM MH ID	1141240840
DOWNSTREAM MH ID	1141240860
TOTAL LENGTH (FT)	123
TOTAL NUMBER OF RECONNECTED SERVICES	0
TOTAL NUMBER OF PIPE BURST LATERAL REPLACEMENTS	0

EXISTING PIPE SEGMENT SUMMARY

PIPE ID	7284
PIPE DIAMETER AND MATERIAL	8" VCP
UPSTREAM CLEANOUT ID	1141240850C0
DOWNSTREAM MH ID	1141240840
TOTAL LENGTH (FT)	85
TOTAL NUMBER OF RECONNECTED SERVICES	1
TOTAL NUMBER OF PIPE BURST LATERAL REPLACEMENTS	0



VICINITY MAP

7284 LATERAL SUMMARY STARTING FROM DOWNSTREAM MH 1141240840

FOOTAGE	ACTION	PROPERTY SERVED	PRIVATE SEWER LATERAL CONSTRUCTION NOTES
35.1'T	RECONNECT	732 QUEEN AVE SW	RECONNECT LATERAL TO MAIN AS SPECIFIED
41.3'L	ABANDON	-	-

7289 LATERAL SUMMARY STARTING FROM UPSTREAM MH 1141240840

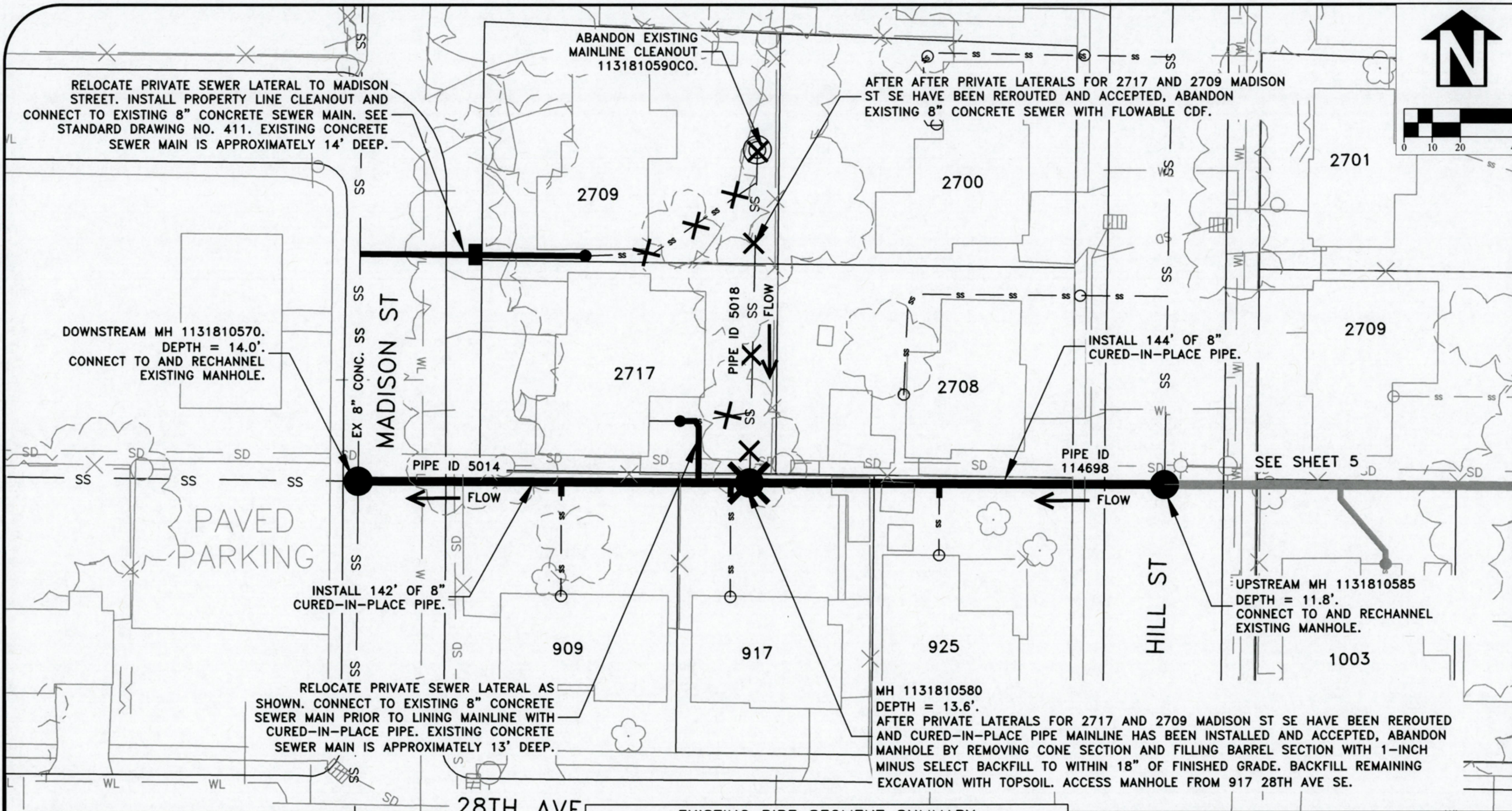
FOOTAGE	ACTION	PROPERTY SERVED	PRIVATE SEWER LATERAL CONSTRUCTION NOTES
53.3'L	ABANDON	-	-
56.4'R	ABANDON	-	-
110.5'T	ABANDON	CATCH BASIN	REMOVE CATCH BASIN AND CONSTRUCT STORM DRAIN INFRASTRUCTURE AS SHOWN.

DESIGNED: L. SCHUMACHER	REVISIONS
DRAWN: L. SCHUMACHER	NO: -
CHECKED: C. CERKLEWSKI	BY: -
DATE: 4/25/2019	NO: -
	DATE: -

PUBLIC WORKS DEPARTMENT
 ENGINEERING SERVICES

SS-19-01-B, 2019 CURED-IN-PLACE PIPE PROJECTS
 PIPE ID 7284 & 7289

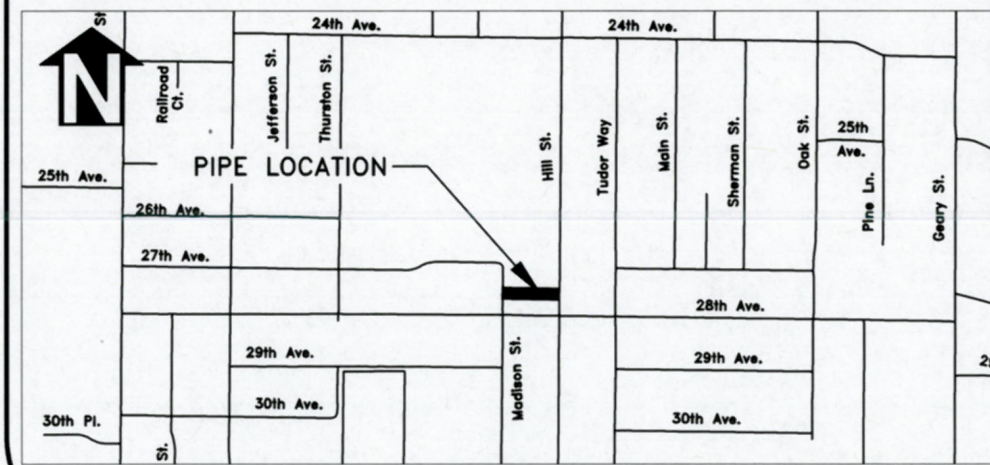
REGISTERED PROFESSIONAL ENGINEER
 85930PE
Lori L. Schumacher
 OREGON
 MARCH 13, 2018
 LORI L. SCHUMACHER
 EXPIRES: 06/30/2020



DESIGNED: L. SCHUMACHER	REVISIONS
DRAWN: L. SCHUMACHER	NO: ---
CHECKED: C. CERKLEWSKI	BY: ---
DATE: 4/25/2019	DATE: ---

**PUBLIC WORKS DEPARTMENT
ENGINEERING SERVICES**

**SS-19-01-B, 2019 CURED-IN-PLACE PIPE PROJECTS
PIPE ID 5014 & 114698**



VICINITY MAP

EXISTING PIPE SEGMENT SUMMARY	
PIPE ID	5014
PIPE DIAMETER AND MATERIAL	8" CONC.
UPSTREAM MH ID	1131810580
DOWNSTREAM MH ID	1131810570
TOTAL LENGTH (FT)	142
TOTAL NUMBER OF RECONNECTED SERVICES	3
TOTAL NUMBER OF OPEN TRENCH LATERAL REPLACEMENTS	1

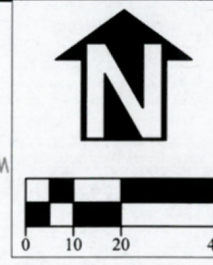
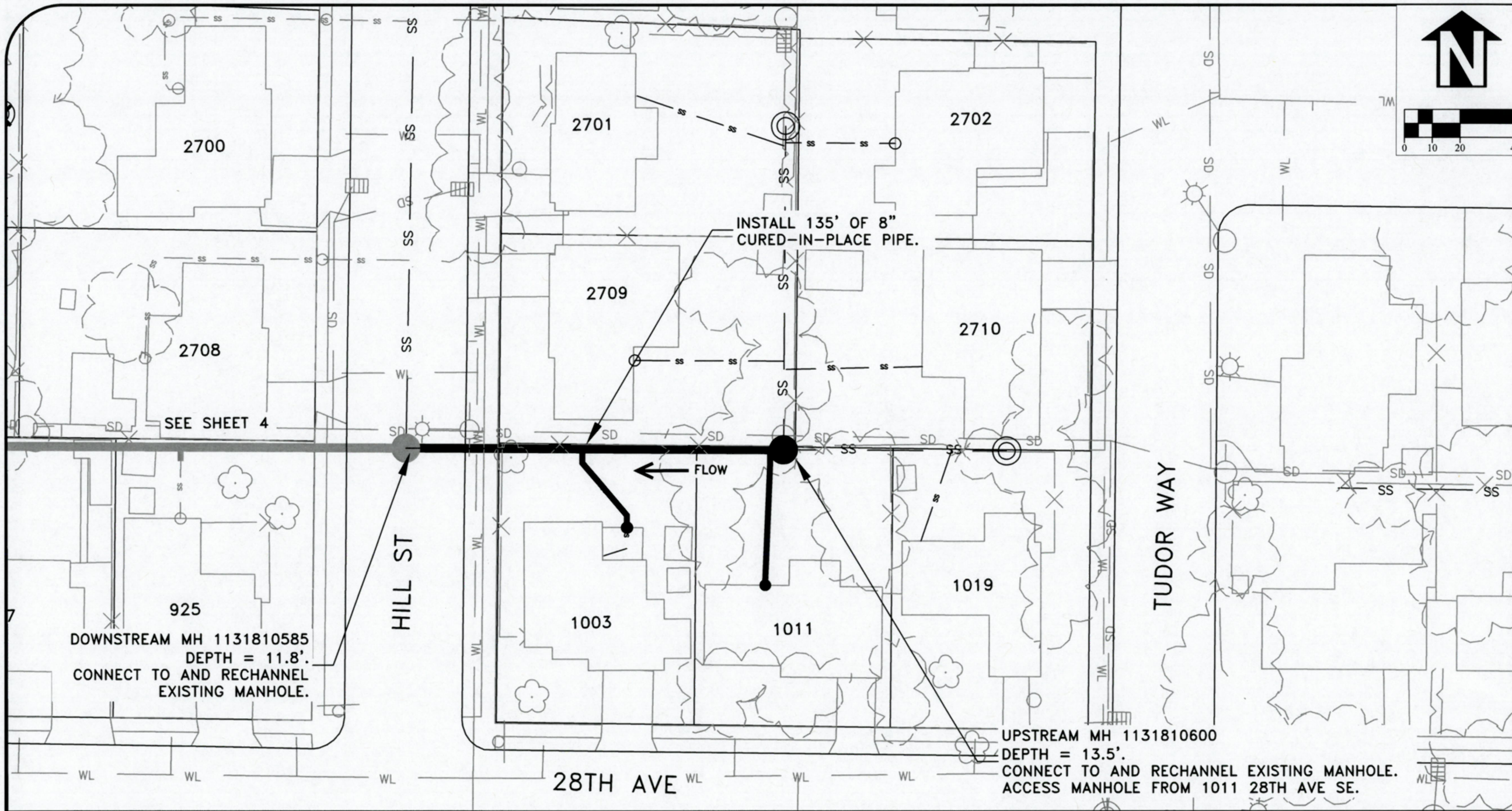
EXISTING PIPE SEGMENT SUMMARY	
PIPE ID	114698
PIPE DIAMETER AND MATERIAL	8" CONC.
UPSTREAM MH ID	1131810585
DOWNSTREAM MH ID	1131810580
TOTAL LENGTH (FT)	144
TOTAL NUMBER OF RECONNECTED SERVICES	1

5014 LATERAL SUMMARY STARTING FROM DOWNSTREAM MH 1131810570			
FOOTAGE	ACTION	PROPERTY SERVED	PRIVATE SEWER LATERAL CONSTRUCTION NOTES
72.6'R	RECONNECT	909 28TH AVE SE	RECONNECT LATERAL TO MAIN AS SPECIFIED
121.0'L (APPROX)	RECONNECT	2717 MADISON ST SE	RELOCATE LATERAL TO MAIN PRIOR TO LINING
137.5'R	RECONNECT	917 28TH AVE SE	RECONNECT LATERAL TO MAIN AS SPECIFIED

114698 LATERAL SUMMARY STARTING FROM DOWNSTREAM MH 1131810580			
FOOTAGE	ACTION	PROPERTY SERVED	PRIVATE SEWER LATERAL CONSTRUCTION NOTES
67.6'R	RECONNECT	925 28TH AVE SE	RECONNECT LATERAL TO MAIN AS SPECIFIED



SHEET NO. 4 OF 8
PROJECT NO: SS-19-01-B
FILE: BASE.DWG



DESIGNED: L. SCHUMACHER	REVISIONS
DRAWN: L. SCHUMACHER	NO:
CHECKED: C. CERKLEWSKI	BY:
DATE: 4/25/2019	DATE:

**PUBLIC WORKS DEPARTMENT
ENGINEERING SERVICES**

**SS-19-01-B, 2019 CURED-IN-PLACE PIPE PROJECTS
PIPE ID 5015**



925
DOWNSTREAM MH 1131810585
DEPTH = 11.8'
CONNECT TO AND RECHANNEL
EXISTING MANHOLE.

UPSTREAM MH 1131810600
DEPTH = 13.5'
CONNECT TO AND RECHANNEL EXISTING MANHOLE.
ACCESS MANHOLE FROM 1011 28TH AVE SE.



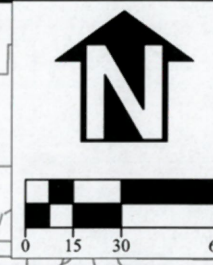
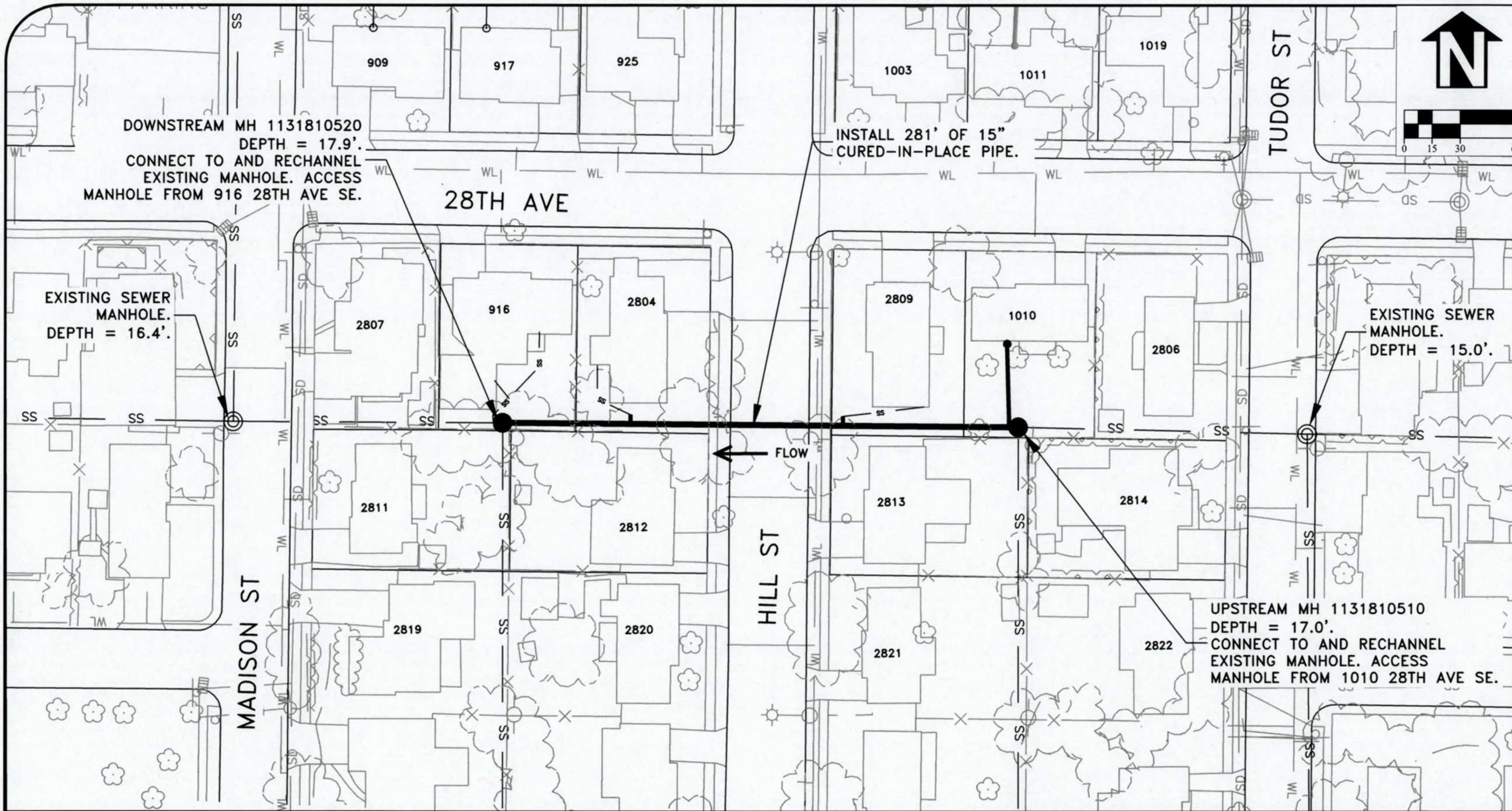
VICINITY MAP

EXISTING PIPE SEGMENT SUMMARY	
PIPE ID	5015
PIPE DIAMETER AND MATERIAL	8" CONC.
UPSTREAM MH ID	1131810600
DOWNSTREAM MH ID	1131810585
TOTAL LENGTH (FT)	135
TOTAL NUMBER OF RECONNECTED SERVICES	2
TOTAL NUMBER OF PIPE BURST LATERAL REPLACEMENTS	2

5679 LATERAL SUMMARY STARTING FROM DOWNSTREAM MH 1131810585			
FOOTAGE	ACTION	PROPERTY SERVED	PRIVATE SEWER LATERAL CONSTRUCTION NOTES
63.0'R	RECONNECT	1003 28TH AVE SE	PIPE BURST LATERAL PRIOR TO LINING MAINLINE
130.2'R	RECONNECT	1011 28TH AVE SE	PIPE BURST LATERAL PRIOR TO LINING MAINLINE



SHEET NO. 5 OF 8
PROJECT NO: SS-19-01-B
FILE: BASE.DWG



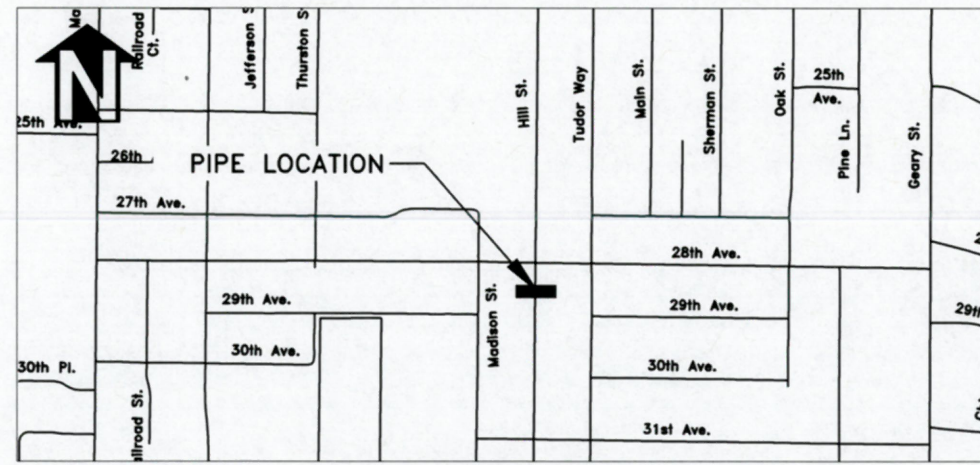
DESIGNED: L. SCHUMACHER
DRAWN: L. SCHUMACHER
CHECKED: C. CERKLEWSKI
DATE: 4/25/2019

REVISIONS	NO.	BY:

PUBLIC WORKS DEPARTMENT
ENGINEERING SERVICES



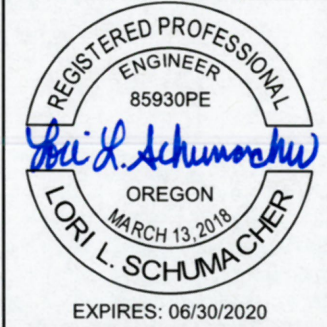
SS-19-01-B, 2019 CURED-IN-PLACE PIPE PROJECTS
PIPE ID 6923



VICINITY MAP

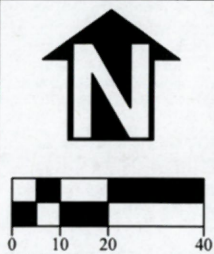
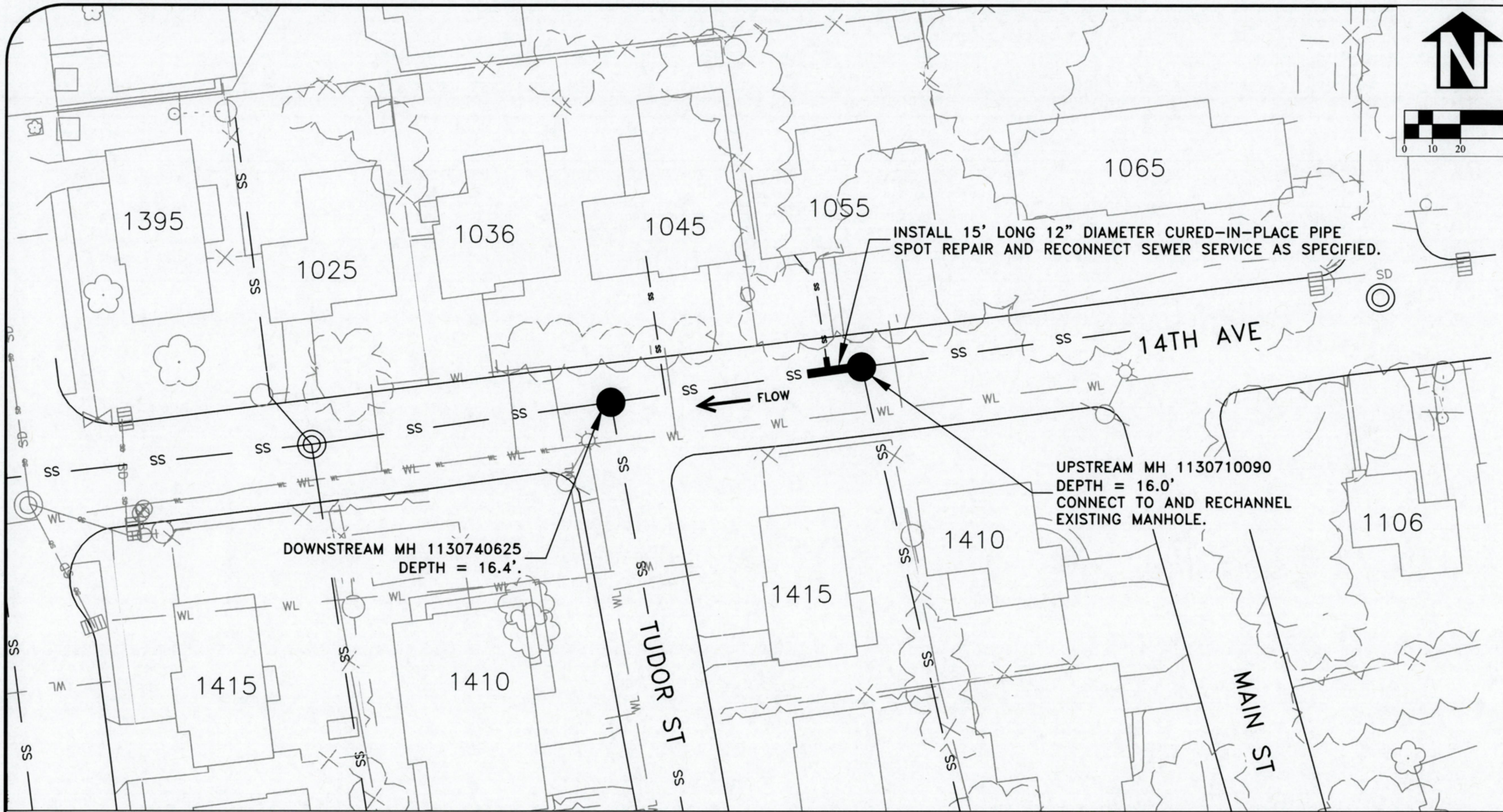
EXISTING PIPE SEGMENT SUMMARY	
PIPE ID	6923
PIPE DIAMETER AND MATERIAL	15" CONC.
UPSTREAM MH ID	1131810510
DOWNSTREAM MH ID	1131810520
TOTAL LENGTH (FT)	281
TOTAL NUMBER OF RECONNECTED SERVICES	3
TOTAL NUMBER OF PIPE BURST LATERAL REPLACEMENTS	1

LATERAL SUMMARY STARTING FROM DOWNSTREAM MH 1131810520			
FOOTAGE	ACTION	PROPERTY SERVED	PRIVATE SEWER LATERAL CONSTRUCTION NOTES
68.8'L	RECONNECT	2804 28TH AVE SE	RECONNECT LATERAL TO MAIN AS SPECIFIED
202.7'L	RECONNECT	2809 28TH AVE SE	RECONNECT LATERAL TO MAIN AS SPECIFIED
271.8'L	RECONNECT	1010 28TH AVE SE	PIPE BURST LATERAL PRIOR TO LINING MAINLINE



EXPIRES: 06/30/2020

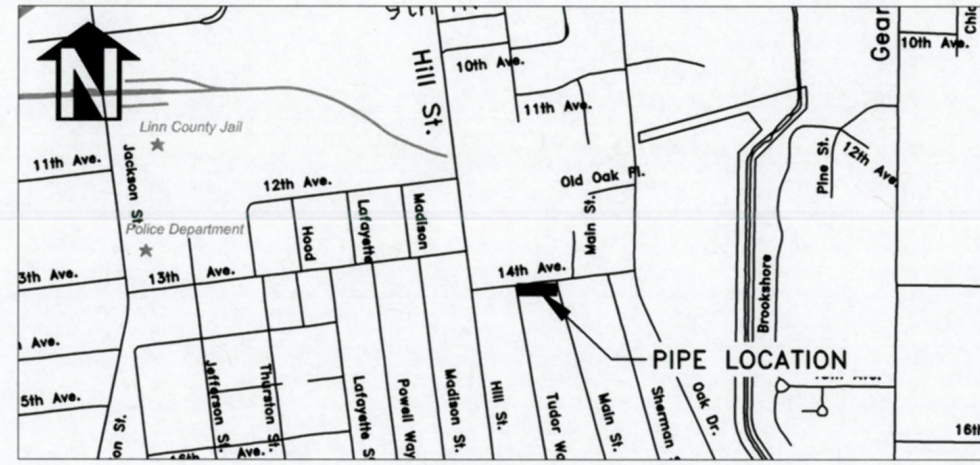
SHEET NO. 6 OF 8
PROJECT NO: SS-19-01-B
FILE: BASE.DWG



DESIGNED: L. SCHUMACHER	REVISIONS	NO:	BY:
DRAWN: L. SCHUMACHER			
CHECKED: C. CERKLEWSKI			
DATE: 4/25/2019			

PUBLIC WORKS DEPARTMENT
ENGINEERING SERVICES

SS-19-01-B, 2019 CURED-IN-PLACE PIPE PROJECTS
PIPE ID 5935

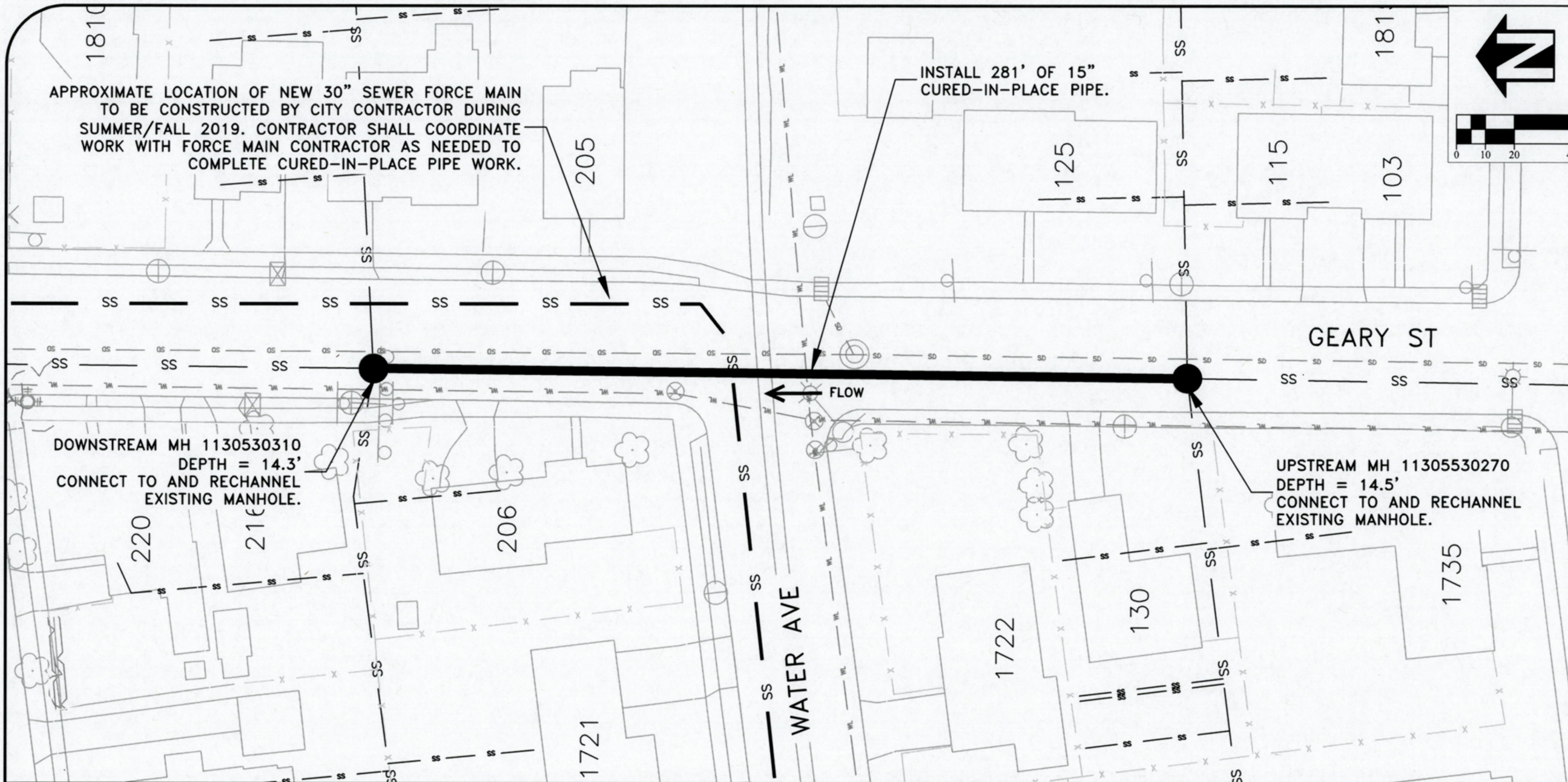


EXISTING PIPE SEGMENT SUMMARY	
PIPE ID	5935
PIPE DIAMETER AND MATERIAL	12" VCP
UPSTREAM MH ID	1130710090
DOWNSTREAM MH ID	1130740625
TOTAL LENGTH (FT)	90
TOTAL NUMBER OF RECONNECTED SERVICES	1
TOTAL NUMBER OF PIPE BURST LATERAL REPLACEMENTS	0

LATERAL SUMMARY STARTING FROM DOWNSTREAM MH 1130740625			
FOOTAGE	ACTION	PROPERTY SERVED	PRIVATE SEWER LATERAL CONSTRUCTION NOTES
20.9'L	NONE	1045 14TH AVE SE	NO ACTION REQUIRED
79.4'L	RECONNECT	1055 14TH AVE SE	RECONNECT LATERAL TO MAIN AS SPECIFIED



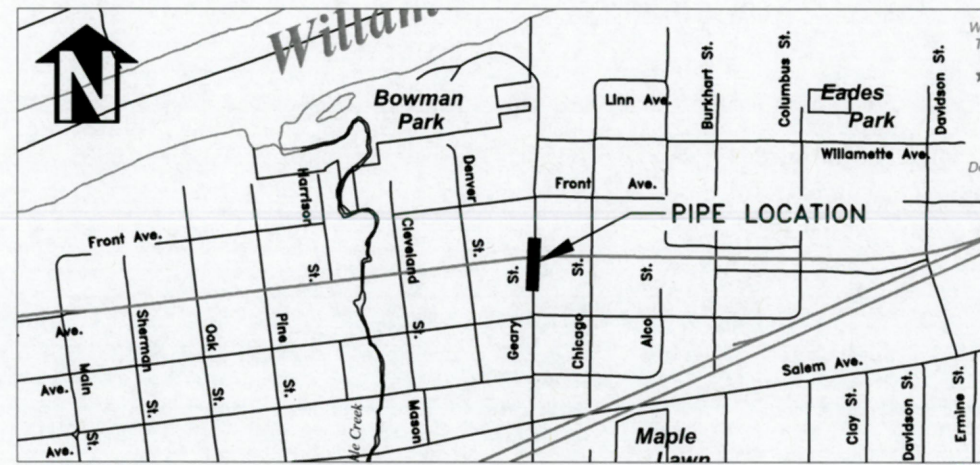
SHEET NO. 7 OF 8
PROJECT NO: SS-19-01-B
FILE: BASE.DWG



DESIGNED: L. SCHUMACHER	REVISIONS:
DRAWN: L. SCHUMACHER	NO: ---
CHECKED: C. CERKLEWSKI	BY: ---
DATE: 4/25/2019	DATE: ---

**PUBLIC WORKS DEPARTMENT
ENGINEERING SERVICES**

**SS-19-01-B, 2019 CURED-IN-PLACE PIPE PROJECTS
PIPE ID 5597**



EXISTING PIPE SEGMENT SUMMARY	
PIPE ID	5597
PIPE DIAMETER AND MATERIAL	15" VCP AND CONC.
UPSTREAM MH ID	1130530270
DOWNSTREAM MH ID	1130530310
TOTAL LENGTH (FT)	281
TOTAL NUMBER OF RECONNECTED SERVICES	0
TOTAL NUMBER OF PIPE BURST LATERAL REPLACEMENTS	0

NOTE:
CONTRACTOR SHALL VERIFY PIPE DIAMETER PRIOR TO ORDERING CURED-IN-PLACE PIPE MATERIALS.

REGISTERED PROFESSIONAL
ENGINEER
85930PE
Lori L. Schumacher
OREGON
MARCH 13, 2018
LORI L. SCHUMACHER

EXPIRES: 06/30/2020

SHEET NO. 8 OF 8
PROJECT NO: SS-19-01-B
FILE: BASE.DWG