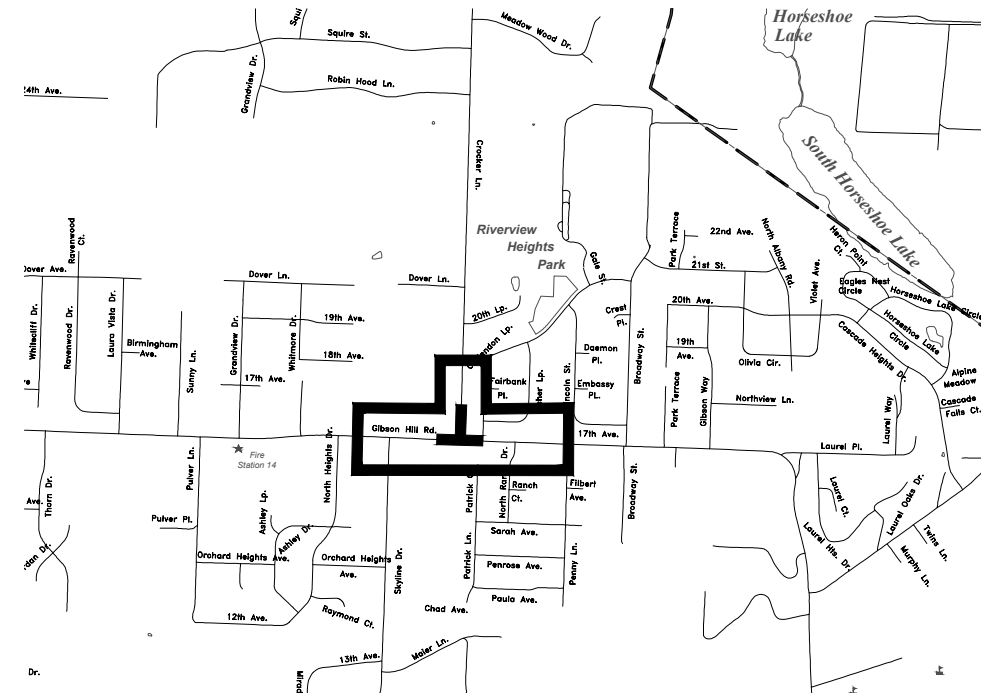
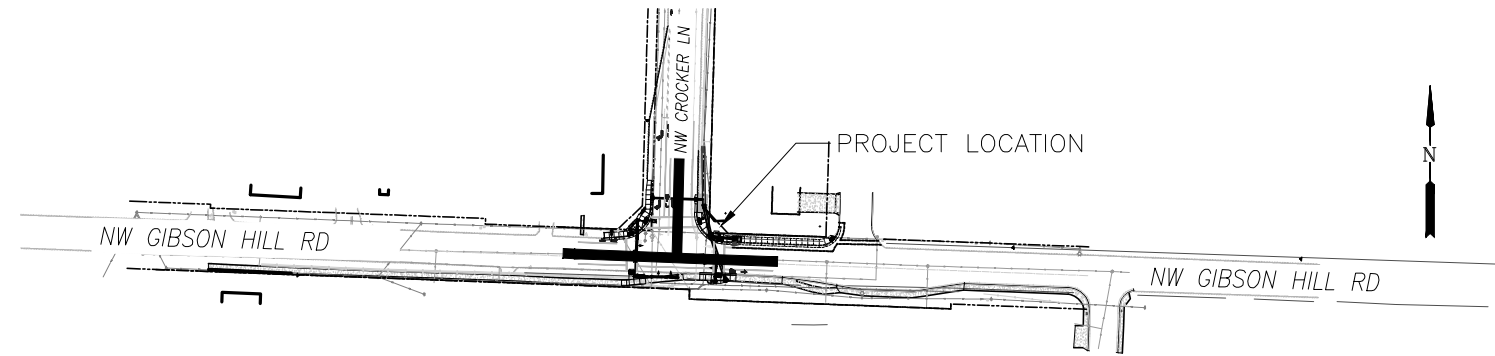


# CITY OF ALBANY

## PROJECT #ST-19-01, NW GIBSON HILL RD AT NW CROCKER LANE TRAFFIC SIGNAL PROJECT

DESIGNED: DNH	REVISIONS
DRAWN: DNH	NO:
CHECKED: DG	BY:
DATE: 2/25/2020	



Vicinity Map  
Not to Scale

### GENERAL NOTES

- ALL GENERAL CONSTRUCTION SHALL CONFORM TO THE CITY OF ALBANY STANDARD CONSTRUCTION SPECIFICATIONS AND ASSOCIATED STANDARD DRAWINGS. THE CURRENT VERSION OF THE CITY OF ALBANY STANDARD CONSTRUCTION SPECIFICATIONS CAN BE FOUND ON THE CITY'S WEBSITE AT [WWW.CITYOFALBANY.NET](http://WWW.CITYOFALBANY.NET).
- ALL TRAFFIC SIGNAL CONSTRUCTION SHALL CONFORM TO THE CURRENT EDITION OF THE OREGON STANDARD SPECIFICATIONS FOR CONSTRUCTION AND OREGON STANDARD DRAWINGS UNLESS OTHERWISE NOTED IN THE SPECIAL PROVISIONS OF THE CONTRACT. THE CURRENT VERSION OF THE OREGON STANDARD CONSTRUCTION SPECIFICATIONS CAN BE FOUND AT THE FOLLOWING WEBSITE: [HTTPS://WWW.OREGON.GOV/ODOT/BUSINESS/PAGES/STANDARD\\_SPECIFICATIONS.ASPX](https://WWW.OREGON.GOV/ODOT/BUSINESS/PAGES/STANDARD_SPECIFICATIONS.ASPX)
- THE CURRENT OREGON (ODOT) STANDARD DRAWINGS CAN BE FOUND AT THE FOLLOWING WEBSITE: [HTTPS://WWW.OREGON.GOV/ODOT/ENGINEERING/PAGES/STANDARDS.ASPX](https://WWW.OREGON.GOV/ODOT/ENGINEERING/PAGES/STANDARDS.ASPX)
- UTILITIES SHOWN ARE FOR REFERENCE ONLY. FOR A FIELD LOCATE, CALL THE UTILITIES NOTIFICATIONS CENTER AT 1-800-332-2344.
- OPERATING ACCESS FOR CITY MAINTENANCE PERSONNEL TO EXISTING AND NEW WATER VALVES AND MANHOLES SHALL BE CONTINUOUSLY MAINTAINED BY THE CONTRACTOR DURING ALL CONSTRUCTION ACTIVITIES.
- CONTRACTOR SHALL VERIFY ALL EXISTING PIPE ELEVATIONS, PIPE DIAMETERS, AND PIPE MATERIALS AT CONNECTION AND ABANDONMENT LOCATIONS PRIOR TO CONSTRUCTION. ANY DISCREPANCIES SHALL BE REPORTED TO ENGINEER PRIOR TO BEGINNING WORK.
- ATTENTION: OREGON LAW REQUIRES YOU TO FOLLOW RULES ADOPTED BY THE OREGON UTILITY NOTIFICATION CENTER. THOSE RULES ARE SET FORTH IN OAR 952-001-0010 THROUGH OAR 952-001-0090. YOU MAY OBTAIN COPIES OF THE RULES BY CALLING THE CENTER. (NOTE: THE TELEPHONE NUMBER FOR THE OREGON UTILITY NOTIFICATION CENTER IS (503) 232-1987).
- CONTRACTOR SHALL BE RESPONSIBLE FOR PROPER INSTALLATION AND MAINTENANCE OF ALL EROSION PREVENTION SEDIMENT CONTROL (EPSC) MEASURES IN ACCORDANCE WITH LOCAL, STATE, AND FEDERAL REGULATIONS UNTIL ALL CONSTRUCTION IS COMPLETED AND APPROVED BY THE CITY OF ALBANY, AND VEGETATION/LANDSCAPING IS ESTABLISHED. FOR GUIDANCE, REFER TO THE CITY OF ALBANY EPSC MANUAL WHICH CAN BE FOUND AT [www.cityofalbany.net](http://www.cityofalbany.net).

### INDEX OF SHEETS

SHEET NO.	DESCRIPTION
1	COVER SHEET
2	EXISTING UTILITIES
3	EXISTING CONDITIONS & REMOVAL PLAN
4	ROADWAY IMPROVEMENTS PLAN
5	CURB RAMP DETAILS - WEST
6	CURB RAMP DETAILS - EAST
7	CURB RAMP DETAILS - CRITTENDEN LP (BID ALTERNATE)
8	SIGNING & STRIPING PLAN
9	TRAFFIC SIGNAL PLAN LEGEND
10	TRAFFIC SIGNAL PLAN
11	DETECTION PLAN
12	SIGNAL PLAN DETAILS - POLE ENTRANCE CHART
13	SIGNAL PLAN DETAILS - TERMINAL CABINET
14	SIGNAL PLAN DETAILS - RADAR DETECTOR MOUNTING

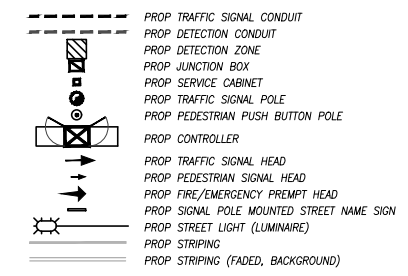
### REFERENCED OREGON STANDARD DRAWINGS

- ROADWAY DWGS:**  
RD317, RD321, RD368, RD370
- STRIPING DWGS:**  
TM500, TM501, TM503, TM521, TM530, TM560
- TRAFFIC SIGNAL, SIGNS AND STRUCTURE DWGS:**  
TM223, TM231, TM450, TM457, TM460, TM462, TM465, TM467, TM470, TM472, TM482, TM485, TM629, TM650, TM652, TM679,

### REFERENCED CITY OF ALBANY STANDARD DRAWINGS

- 204, 205, 206A, 207, 208, 209, 304, 306 313, 315, 404, 407, 409, 411, 412, 414, 416, 502, TM631 & TM632

### LEGEND



OREGON DEPARTMENT OF TRANSPORTATION  
TRAFFIC-ROADWAY SECTION

Branch ENGINEERING  
civil • transportation  
structural • geotechnical  
SURVEYING  
www.BranchEngineering.com  
Springfield, OR • Salem, OR

GIBSON HILL ROAD IMPROVEMENTS  
TRAFFIC SIGNAL AT NW CROCKER LANE  
& NW GIBSON HILL ROAD  
BENTON COUNTY

DESIGNED BY: DAN HAGA, PE  
REVIEWED BY: DAMIEN GILBERT, PE  
DRAFTED BY: DNH

COVER SHEET  
TSSU No. 4CA161



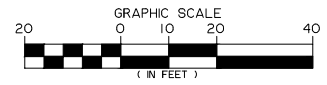
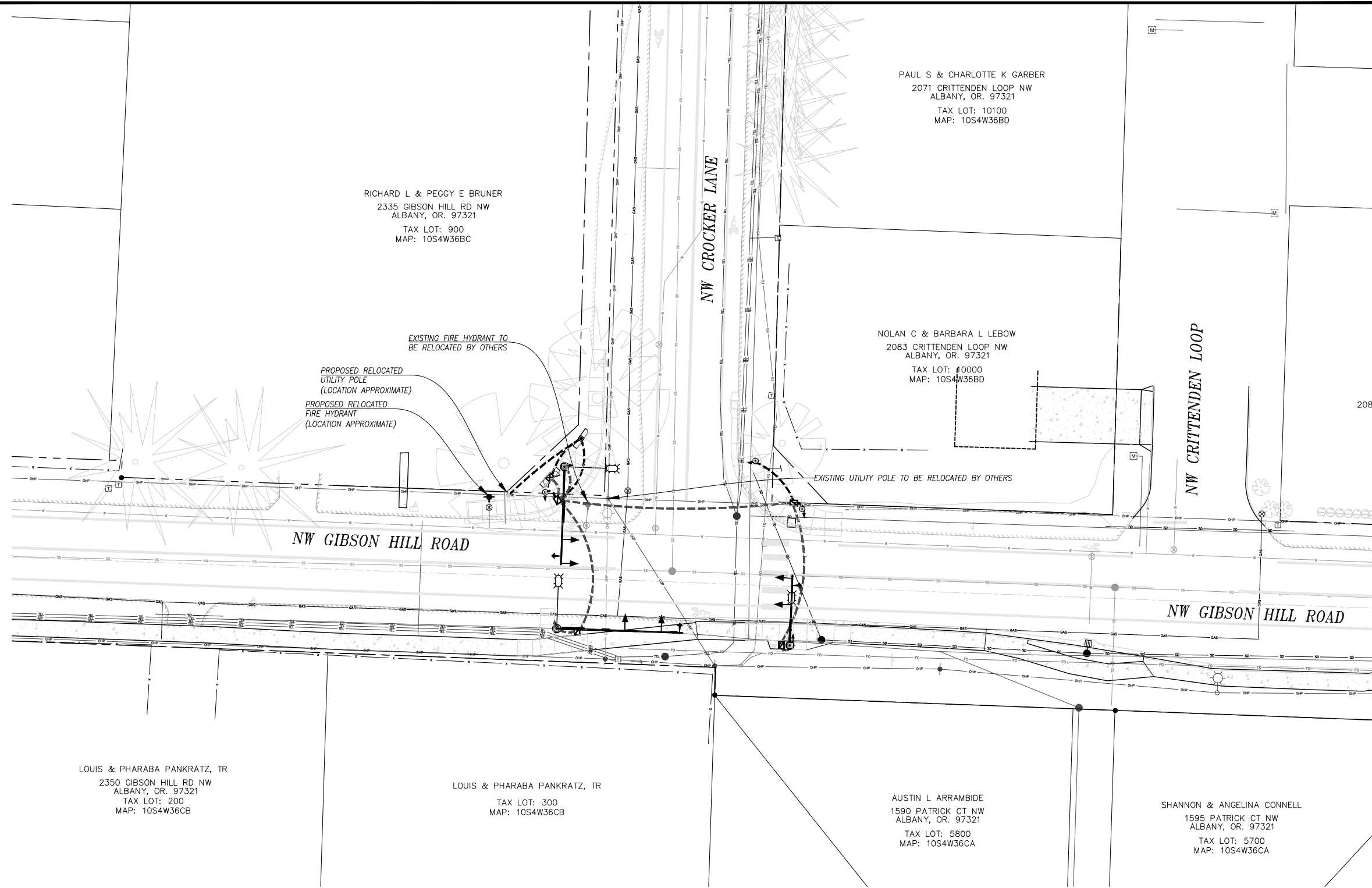
COVER SHEET

SHEET NO. 1 OF 14  
PROJECT NO: ST-19-01  
FILE: 18-139 PLANS

SIGNAL IMPROVEMENTS

PUBLIC WORKS DEPARTMENT  
ENGINEERING SERVICES

Z:\2018\18-139 Albany Crocker At Gibson Hill Signal\WGS\Branch\18-139 PLANS.dwg EX. UTIL 2/24/2020 4:55 PM DNH



REGISTERED PROFESSIONAL  
ENGINEER  
#62780PE  
DIGITALLY SIGNED  
OREGON  
JULY 13, 2004  
DAMIEN GILBERT  
EXPIRES: JUNE 30, 2021

**OREGON DEPARTMENT OF TRANSPORTATION**  
TRAFFIC-ROADWAY SECTION

**Branch ENGINEERING**  
civil • transportation  
structural • geotechnical  
S U R V E Y I N G  
www.BranchEngineering.com  
Springfield, OR 97477  
p: 541.746.0637

**GIBSON HILL ROAD IMPROVEMENTS**  
TRAFFIC SIGNAL AT NW CROCKER LANE &  
NW GIBSON HILL ROAD  
BENTON COUNTY

DESIGNED BY: DAN HAGA, PE  
REVIEWED BY: DAMIEN GILBERT, PE  
DRAFTED BY: DNH

**EXISTING UTILITIES**  
TSSU No. 4CA161

DESIGNED: DNH	REVISIONS
DRAWN: DNH	NO:
CHECKED: DG	BY:
DATE: 2/25/2020	

**PUBLIC WORKS DEPARTMENT**  
**ENGINEERING SERVICES**

**Branch ENGINEERING**  
Since 1977  
310 5th Street  
Springfield, OR 97477  
p: 541.746.0637  
www.BranchEngineering.com

**SIGNAL IMPROVEMENTS**

<b>EXISTING UTILITIES</b>
SHEET NO. 2 OF 14
PROJECT NO: ST-19-01
FILE: 18-139 PLANS

**REMOVAL NOTES**

- 1 SAWCUT AND REMOVE EXISTING CONCRETE CURB AND GUTTER, SIDEWALK(S) AND/OR ASPHALT TO EXTENTS SHOWN. REMOVED ASPHALT SHALL ALLOW A MINIMUM 2-FOOT SECTION WIDTH TO ACCOMMODATE COMPACTION EQUIPMENT TO EXISTING/NEW CONCRETE CURB AND GUTTER.
- 2 REMOVE EXISTING 30 INCH DI STORM PIPE. PROTECT EXISTING MANHOLE AND KNOCKOUT FOR INSTALLATION OF NEW PIPE.
- 3 EXISTING UTILITY POLE TO BE RELOCATED BY OTHERS. CONTACT EDDIE STEINER, PACIFIC POWER @ (541)967-0146
- 4 FIRE HYDRANT TO BE RELOCATED BY OTHERS. SEE SHEET 4 FOR NEW LOCATION.
- 5 EXISTING PEDESTRIAN SIGNAL POLE AND ATTACHMENTS TO BE REMOVED BY OTHERS. CONTACT CHRIS CERKLEWSKI, CITY OF ALBANY @ (541)917-7646 .
- 6 REMOVE EXISTING POLE FOUNDATION.
- 7 MAINTAIN & PROTECT EXISTING TELEPHONE/COMMUNICATIONS PEDESTAL/UNIT.
- 8 MAINTAIN & PROTECT EXISTING STOP SIGN AND STREET NAME SIGN DURING CONSTRUCTION. PROVIDE TEMPORARY ACCOMMODATIONS FOR TRAFFIC CONTROL WHEN WORK REQUIRES COMPLETE REMOVAL.
- 9 MAINTAIN & PROTECT EXISTING VALVE BOX AND LID.
- 10 REMOVE AND REPLACE EXISTING GAS VALVE LID. SUPPLY RISER AND ADJUST TO FINISH GRADE AS NEEDED. NEW VALVE COVER SHALL BE SLIP RESISTANT AND SUITABLE FOR INSTALLATION WITHIN SIDEWALK.
- 11 MAINTAIN AND PROTECT EXISTING SIGN. SEE STRIPING AND SIGNING PLAN, SHEET 8 AND BID ALTERNATE SHEET.
- 12 MAINTAIN & PROTECT EXISTING MANHOLE.
- 13 MAINTAIN & PROTECT BURIED UTILITIES. POTHOLE FOR VERTICAL CLEARANCE AT CROSSING LOCATIONS
- 14 EXISTING OVERHEAD UTILITIES TO BE RELOCATED BY OTHERS AS NEEDED TO PROVIDE 10.0' MINIMUM CLEARANCE TO TRAFFIC SIGNAL AND APPURTENANCES. CONTACT EDDIE STEINER, PACIFIC POWER @ (541)967-0146
- 15 REMOVE EXISTING TOPSOIL AND OVERBURDEN TO A DEPTH OF 6 INCHES BELOW EXISTING SURFACE GRADE FOR NEW ROAD SUBBASE COURSE OR PIPE BEDDING MATERIAL. REMOVE ALL TREES AND ROOT SECTIONS WITHIN EXTENTS SHOWN. SEE SHEETS 4-6 FOR CROSS SECTION DETAILS.
- 16 REMOVE EXISTING TREE ON PRIVATE PROPERTY AND ALL ROOTS WITHIN RIGHT-OF-WAY. COORDINATE WITH PROPERTY OWNER.
- 17 REMOVE EXISTING TREE.
- 18 REMOVE EXISTING 12 INCH STORM PIPE.

MICHAEL L & SHERRY EGBERT  
2055 CRITTENDEN LOOP NW  
ALBANY, OR. 97321  
TAX LOT: 10200  
MAP: 10S4W36BD

PAUL S & CHARLOTTE K GARB  
2071 CRITTENDEN LOOP NW  
ALBANY, OR. 97321  
TAX LOT: 10100  
MAP: 10S4W36BD

RICHARD L & PEGGY E BRUNER  
2335 GIBSON HILL RD NW  
ALBANY, OR. 97321  
TAX LOT: 900  
MAP: 10S4W36BC

NOLAN C & BARBARA L LEBOW  
2083 CRITTENDEN LOOP NW  
ALBANY, OR. 97321  
TAX LOT: 10000  
MAP: 10S4W36BD

DESIGNED: DNH	REVISIONS
DRAWN: DNH	NO:
CHECKED: DG	BY:
DATE: 2/25/2020	

**PUBLIC WORKS DEPARTMENT  
ENGINEERING SERVICES**

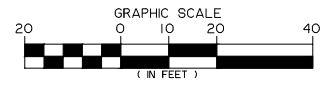
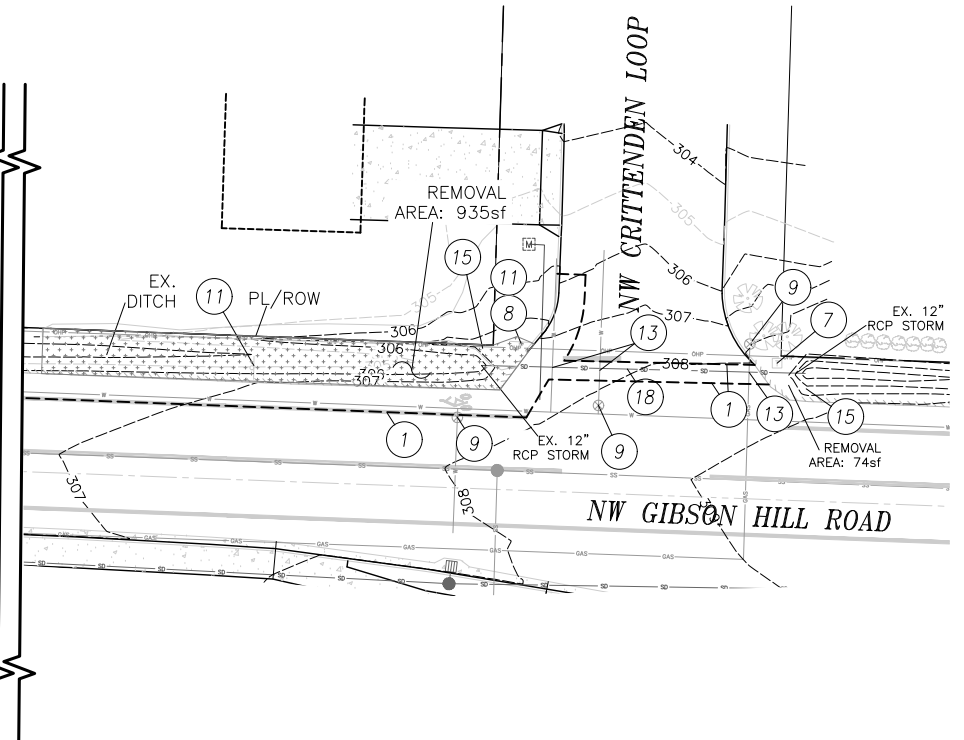
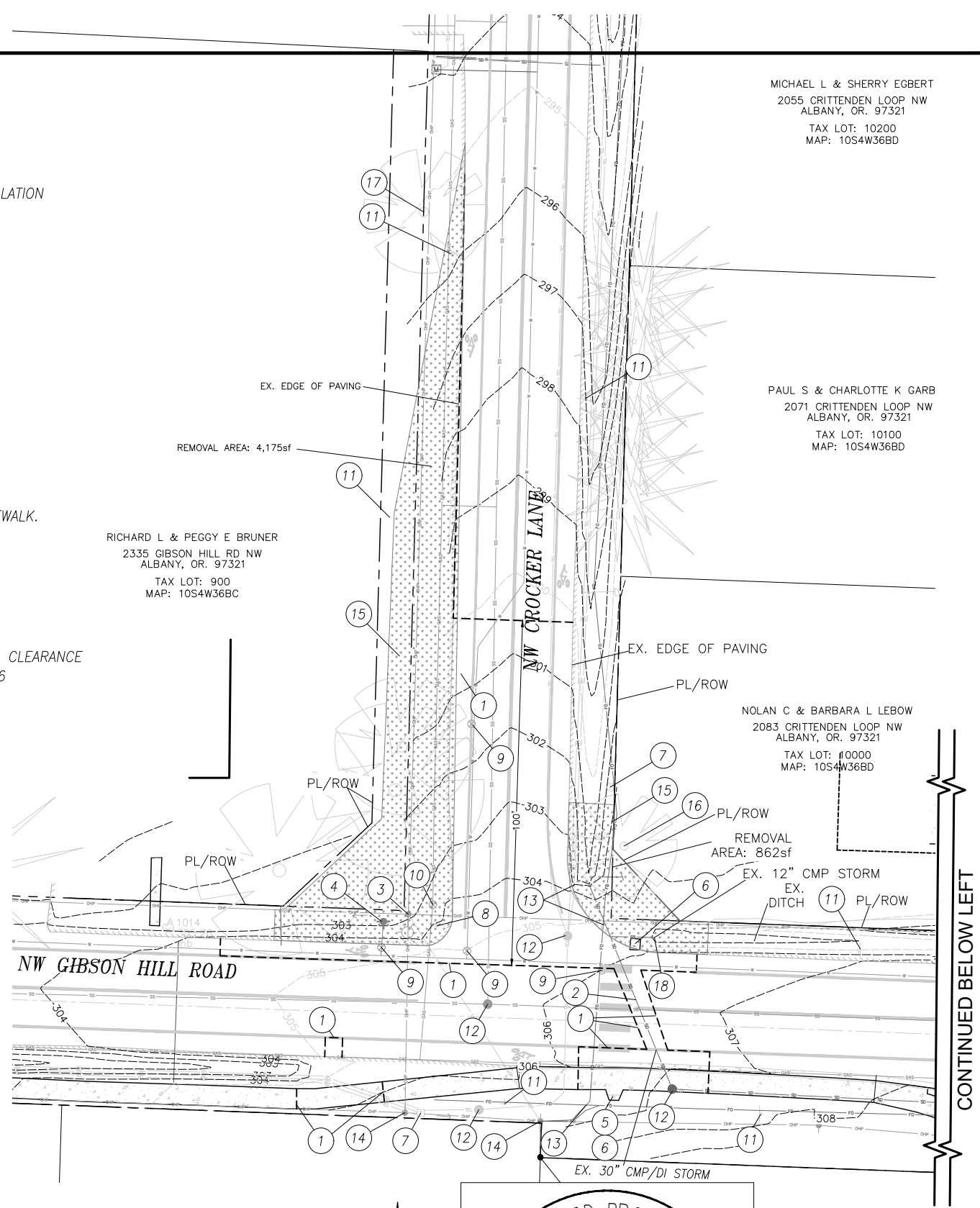


**Branch ENGINEERING**  
Since 1977  
310 5th Street  
Springfield, OR 97477  
p: 541.746.0637  
www.BranchEngineering.com

SIGNAL IMPROVEMENTS

EXISTING CONDITIONS AND REMOVAL PLAN

SHEET NO. 3 OF 14  
PROJECT NO: ST-19-01  
FILE: 18-139 PLANS



OREGON DEPARTMENT OF TRANSPORTATION  
TRAFFIC-ROADWAY SECTION

**Branch ENGINEERING**  
civil • transportation  
structural • geotechnical  
SURVEYING  
www.BranchEngineering.com  
Springfield, OR • Salem, OR

**GIBSON HILL ROAD IMPROVEMENTS**  
TRAFFIC SIGNAL AT NW CROCKER LANE  
& NW GIBSON HILL ROAD  
BENTON COUNTY

DESIGNED BY: DAN HAGA, PE  
REVIEWED BY: DAMIEN GILBERT, PE  
DRAFTED BY: DNH

**REMOVAL PLAN**  
TSSU No. 4CA161

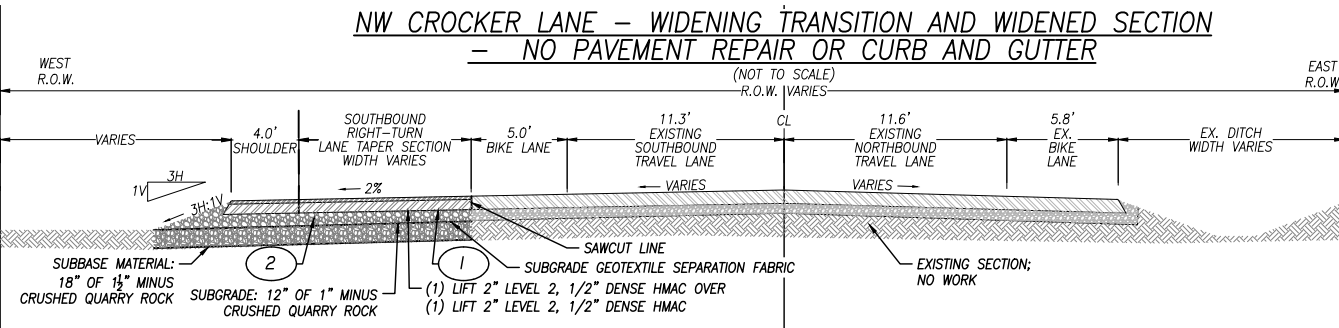
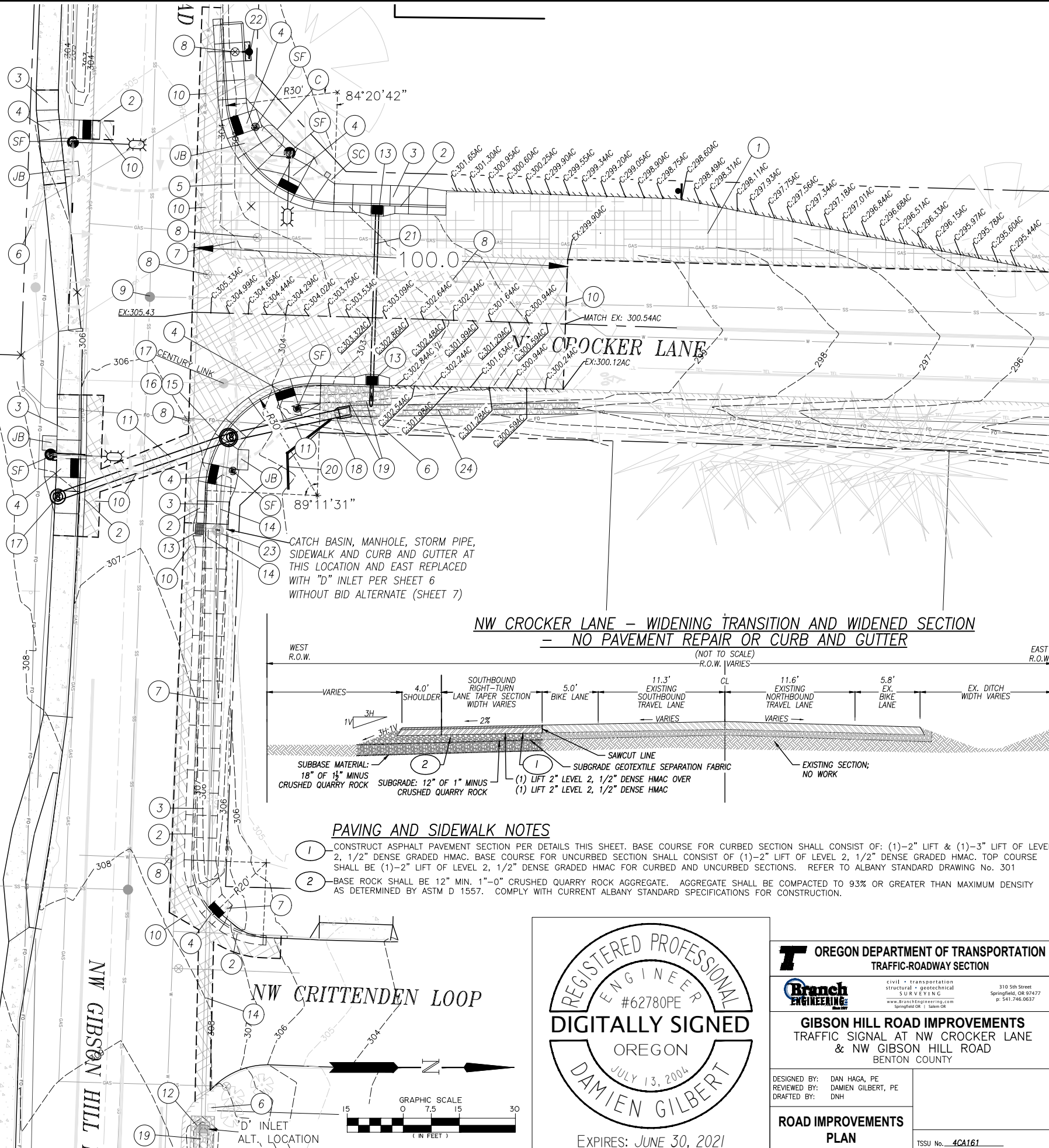
Z:\2018\18-139 Albany Crocker At Gibson Hill Signal\DWG\Branch\18-139 PLANS.dwg REMOVAL 2/24/2020 4:55 PM DNH

CONTINUED FROM ABOVE RIGHT  
BID ALTERNATE ADDITION

CONTINUED BELOW LEFT

# GENERAL CONSTRUCTION NOTES

- 1 CONST PAVEMENT WIDENING SECTION. SEE DETAILS THIS SHEET AND SHEETS 5 AND 6.
  - 2 CONST PCC CURB AND GUTTER PER CITY OF ALBANY STD DWG No. 304. CURB HT SHALL BE 3" MIN. BETWEEN TWO RAMPS ADJACENT TO EACH OTHER LOCATED AT ONE CORNER AND FLUSH (NO LIP) IN FRONT OF CURB RAMPS. SEE DETAIL SHEETS FOR ELEVATIONS AND HEIGHTS.
  - 3 CONST PCC CURBSIDE SIDEWALK PER CITY OF ALBANY STD DWG No. 313; WIDTH, ELEVATIONS AND TYPE SHOWN ON SHEETS 5, 6 & 7.
  - 4 CONST PCC SIDEWALK RAMPS AND LANDING AREAS PER CITY OF ALBANY STD DWG NO 315 AND RAMP DETAILS ON SHEETS 5, 6 & 7.
  - 5 FIRE HYDRANT TO BE RELOCATED BY OTHERS SEE NOTE 22.
  - 6 MAINTAIN & PROTECT EXISTING TELEPHONE/COMMUNICATIONS PEDESTAL/UNIT.
  - 7 EXISTING SIGN, SEE SHEET 8.
  - 8 ADJUST VALVE BOX TO FINISHED GRADE PER CITY OF ALBANY STD DWG 502.
  - 9 MAINTAIN & PROTECT EXISTING SANITARY SEWER MANHOLE.
  - 10 CONSTRUCT TEE CUT AND PAVEMENT RESTORATION PER CITY OF ALBANY STANDARD DWG No. 206A. SEE SHEETS 5, 6 & 7 FOR PAVING AND BASE ROCK DETAILS
  - 11 FURNISH AND INSTALL 24" HP SANITITE STORM PIPE (OR APPROVED EQUAL) WITH SLOPE = 4.4%. CONNECT TO EXISTING MANHOLE AT EXISTING INVERT ELEVATION AND TO NEW MANHOLE AT INVERT ELEVATION ON SHEET 6. REFER TO CITY OF ALBANY STANDARD DWG Nos. 204, 205 & 207. USE EXISTING BEDDING WHERE ALIGNMENT ALLOWS. CONSTRUCT TYPE 'D' DITCH INLET PER ODOT STANDARD DWG RD370. CONNECT TO 12" PIPE INVERT AT ELEVATION SHOWN ON SHEET 7.
  - 12 FURNISH AND INSTALL CONCRETE CURB INLET CATCH BASIN AND CG-2 GRATE PER CITY OF ALBANY STANDARD DWG No. 414.
  - 13 FURNISH AND INSTALL 12" HP SANITITE STORM PIPE, OR APPROVED EQUAL. CONNECT TO MANHOLE AND INLET AT ELEVATIONS SHOWN ON SHEETS 6 AND 7. REFER TO CITY OF ALBANY STANDARD DWGS 204, 205 & 207 FOR TRENCH AND PIPE BEDDING DETAILS
  - 14 FURNISH AND INSTALL STANDARD SHALLOW PRE-CAST MANHOLE PER CITY OF ALBANY STD DWG No. 402.
  - 15 FURNISH AND INSTALL ECCENTRIC PRECAST FLAT TOP MANHOLE COVER.
  - 16 MAINTAIN AND PROTECT EXISTING MANHOLE. ADJUST CITY STORM MANHOLE TO FINISHED GRADE PER CITY OF ALBANY STANDARD DWG No. 409. COORDINATE WITH CENTURY LINK FOR ADJUSTMENT OF COMMUNICATIONS MANHOLE, CONTACT: TRAVIS VAUGHN (503-365-5555)
  - 17 CONSTRUCT PAVED END SLOPE WITH REMOVABLE SAFETY BAR(S) PER ODOT STD DWG RD321
  - 18 CONSTRUCT CULVERT EMBANKMENT PROTECTION AND RIPRAP PAD PER ODOT STD DWG RD317, USE CLASS 50 RIPRAP.
  - 19 INTERSECT EXISTING 4" ROOF DRAIN AND INSTALL CLEANOUT PER ALBANY STANDARD DWG No. 411. DIVERT DRAIN TO NEW STORM OUTFALL SHOWN ON SHEET 6. 4" INVERT SHALL BE HIGHER THAN TOP OF 24" PIPE.
  - 20 FURNISH AND INSTALL 10" PVC C900 (DR25) STORM PIPE, OR APPROVED EQUAL. CONNECT TO INLETS AT ELEVATIONS SHOWN ON SHEETS 5 AND 6. REFER TO CITY OF ALBANY STANDARD DWGS 204, 205 & 207 FOR TRENCH AND PIPE BEDDING DETAILS
  - 21 MAINTAIN AND PROTECT FIRE HYDRANT (RELOCATION BY OTHERS, LOCATION SHOWN APPROXIMATE).
  - 22 FURNISH AND INSTALL 24" MINI-MANHOLE PER ALBANY STANDARD DWG No. 416 & 407. SEE INVERT ELEVATION DETAILS PROVIDED ON SHEET 6.
  - 23 RE-GRADE DITCH. REMOVE BOTTOM SURFACE MATERIAL AND PROVIDE 1.0' DEEP CLASS 50 RIP RAP PAD PER DETAILS SHEET 6
  - C CONTROLLER CABINET - SEE SIGNAL PLAN.
  - SC SERVICE CABINET - SEE SIGNAL PLAN.
  - JB CONST JUNCTION BOX, SEE SIGNAL PLAN.
  - SF CONST SIGNAL FOUNDATION, SEE SIGNAL PLAN.
  - 7" TEE CUT PAVEMENT REPAIR SECTION. SEE NOTE 10 ABOVE AND DETAILS SHEETS 5 AND 6
  - 4" TEE CUT PAVEMENT REPAIR SECTION. SEE NOTE 10 ABOVE AND DETAILS SHEETS 5 AND 6
  - PAVEMENT WIDENING SECTION. SEE DETAILS THIS SHEET AND SHEET 5
- CONTRACTOR SHALL HAVE FORM WORK INSPECTED AND APPROVED BY CITY OF ALBANY PRIOR TO POURING CONCRETE SIDEWALK, INCLUDING LANDING AREAS AND CURB RAMPS.



**PAVING AND SIDEWALK NOTES**

- 1 CONSTRUCT ASPHALT PAVEMENT SECTION PER DETAILS THIS SHEET. BASE COURSE FOR CURBED SECTION SHALL CONSIST OF: (1)-2" LIFT & (1)-3" LIFT OF LEVEL 2, 1/2" DENSE GRADED HMAC. BASE COURSE FOR UNCURBED SECTION SHALL CONSIST OF (1)-2" LIFT OF LEVEL 2, 1/2" DENSE GRADED HMAC. TOP COURSE SHALL BE (1)-2" LIFT OF LEVEL 2, 1/2" DENSE GRADED HMAC FOR CURBED AND UNCURBED SECTIONS. REFER TO ALBANY STANDARD DRAWING No. 301
- 2 BASE ROCK SHALL BE 12" MIN. 1"-0" CRUSHED QUARRY ROCK AGGREGATE. AGGREGATE SHALL BE COMPACTED TO 93% OR GREATER THAN MAXIMUM DENSITY AS DETERMINED BY ASTM D 1557. COMPLY WITH CURRENT ALBANY STANDARD SPECIFICATIONS FOR CONSTRUCTION.



**OREGON DEPARTMENT OF TRANSPORTATION**  
TRAFFIC-ROADWAY SECTION

**Branch ENGINEERING**  
civil • transportation  
structural • geotechnical  
SURVEYING  
310 5th Street  
Springfield, OR 97477  
p. 541.746.0637  
www.BranchEngineering.com  
Springfield OR • Salem OR

**GIBSON HILL ROAD IMPROVEMENTS**  
TRAFFIC SIGNAL AT NW CROCKER LANE  
& NW GIBSON HILL ROAD  
BENTON COUNTY

DESIGNED BY: DAN HAGA, PE  
REVIEWED BY: DAMIEN GILBERT, PE  
DRAFTED BY: DNH

**ROAD IMPROVEMENTS PLAN**

TSU No. **4CA161**

DESIGNED: DNH  
DRAWN: DNH  
CHECKED: DG  
DATE: 2/25/2020

REVISIONS  
NO: BY: DATE:

**PUBLIC WORKS DEPARTMENT**  
**ENGINEERING SERVICES**

**Branch ENGINEERING**  
Since 1977  
310 5th Street  
Springfield, OR 97477  
p. 541.746.0637  
www.BranchEngineering.com

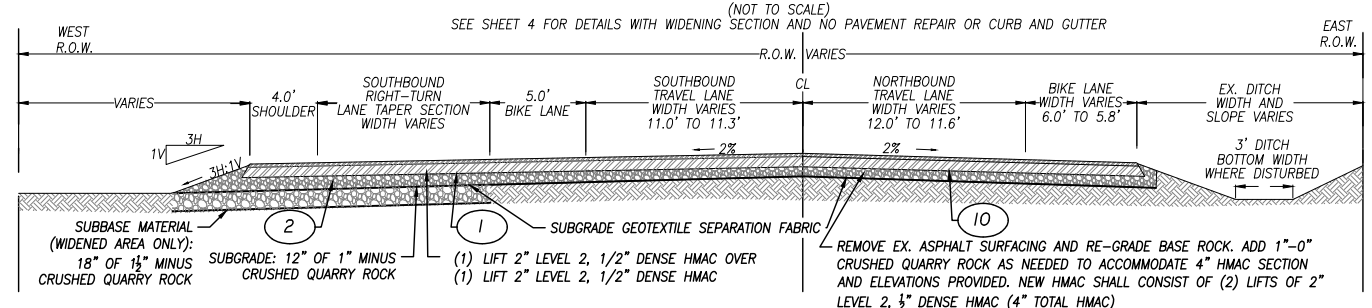
**SIGNAL IMPROVEMENTS**

**ROAD IMPROVEMENTS PLAN**

SHEET NO. **4 OF 14**  
PROJECT NO: ST-19-01  
FILE: 18-139 PLANS

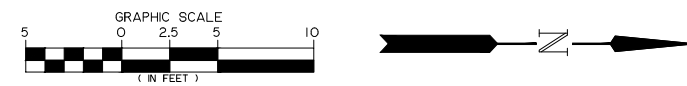
Z:\2018\18-139 Albany Crocker At Gibson Hill Signal\Drawings\Branch\18-139 PLANS.dwg CROCKER PLAN 2/24/2020 4:55 PM DNH

NW CROCKER LANE – WIDENED SECTION WITH PAVEMENT REPAIR, NO CURB AND GUTTER

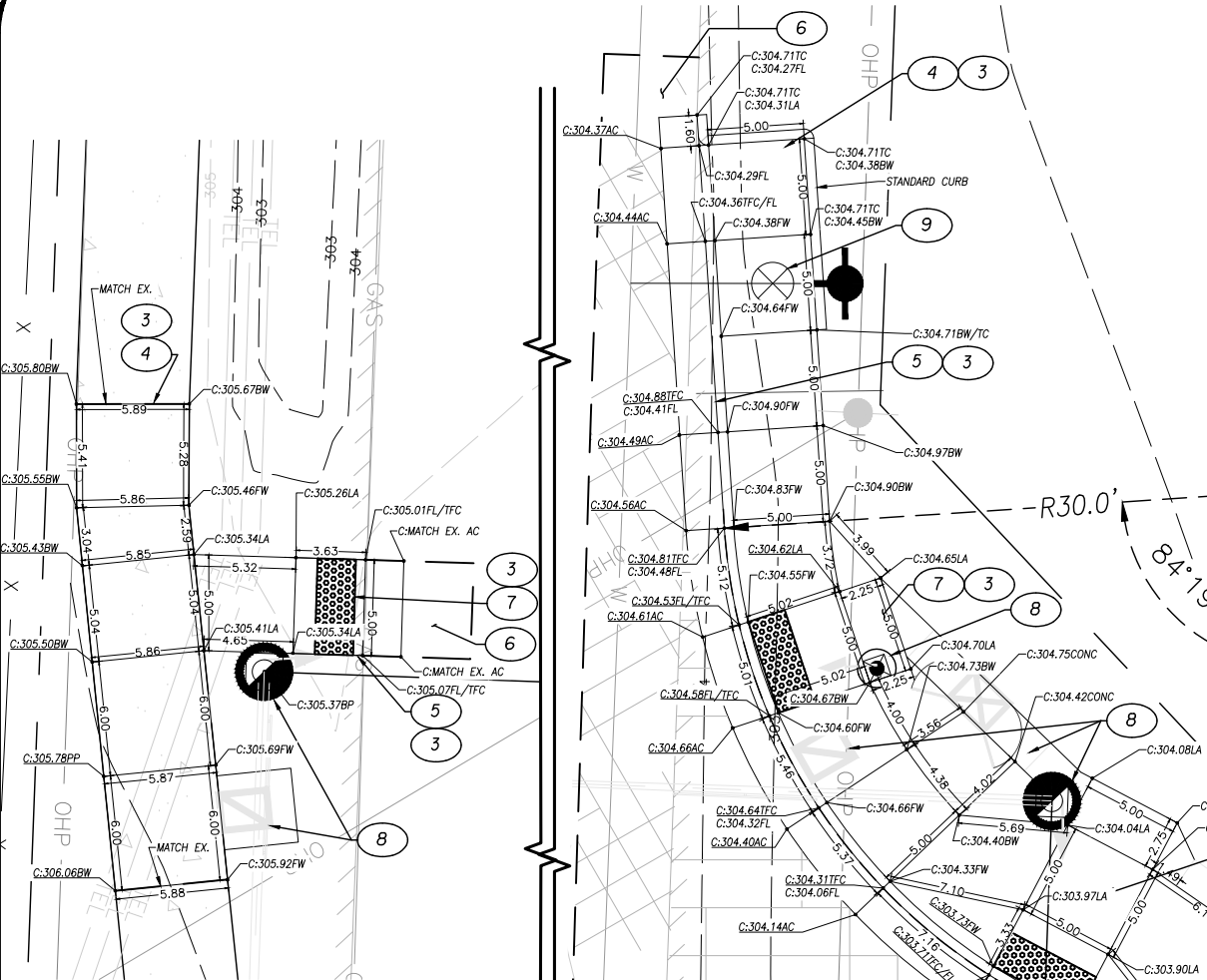


PAVING AND SIDEWALK NOTES

- 1 CONSTRUCT ASPHALT PAVEMENT SECTION PER DETAILS THIS SHEET. BASE COURSE FOR CURBED SECTION SHALL CONSIST OF: (1)-2" LIFT & (1)-3" LIFT OF LEVEL 2, 1/2" DENSE GRADED HMAC. BASE COURSE FOR UNCURBED SECTION SHALL CONSIST OF (1)-2" LIFT OF LEVEL 2, 1/2" DENSE GRADED HMAC. TOP COURSE SHALL BE (1)-2" LIFT OF LEVEL 2, 1/2" DENSE GRADED HMAC FOR CURBED AND UNCURBED SECTIONS. REFER TO ALBANY STANDARD DRAWING NO. 301
- 2 BASE ROCK SHALL BE 12" MIN. 1"-0" CRUSHED QUARRY ROCK AGGREGATE. AGGREGATE SHALL BE COMPACTED TO 93% OR GREATER THAN MAXIMUM DENSITY AS DETERMINED BY ASTM D 1557. COMPLY WITH CURRENT ALBANY STANDARD SPECIFICATIONS FOR CONSTRUCTION.
- 3 PORTLAND CEMENT CONCRETE SHALL ATTAIN A MINIMUM COMPRESSIVE STRENGTH OF 4000 PSI WITHIN 28 DAYS. COMPLY WITH CURRENT ALBANY STANDARD SPECIFICATIONS FOR CONSTRUCTION.
- 4 CONCRETE SIDEWALK TO BE 4" THICK PER ALBANY STANDARD DRAWING NO. 313 OVER 3" OF 1"-0" CRUSHED QUARRY ROCK.
- 5 CONCRETE CURB & GUTTER PER ALBANY STANDARD DRAWING NO. 304. 6" CURB EXPOSURE AND 4.35% GUTTER PAN SLOPE (TYPICAL), EXCEPT WHERE SHOWN OTHERWISE AT/NEAR ADA RAMP.
- 6 7" PAVEMENT REPAIR SECTION, REMOVE EXISTING ASPHALT SURFACING TO SAWCUT LINES SHOWN. REMOVE AND REPLACE EXISTING BASE ROCK PER NOTE 2 (ABOVE) TO ACCOMMODATE PAVEMENT SECTION DESCRIBED IN NOTE 1 (7" HMAC). REFER TO ALBANY STANDARD DRAWINGS NO. 301 AND 206A
- 7 CONSTRUCT ADA ACCESS RAMP(S) TO ELEVATION AND DIMENSION DETAILS SHOWN. INSTALL TRUNCATED DOME TEXTURING, PER CITY OF ALBANY STANDARD DRAWING NO. 315. CITY OF ALBANY SHALL APPROVE FORMS PRIOR TO POURING CONCRETE. ACCEPTANCE SHALL BE BASED ON FINISHED SURFACE
- 8 TRAFFIC SIGNAL APPURTENANCE, SEE TRAFFIC SIGNAL PLAN.
- 9 ADJUST VALVE BOX TO FINISHED GRADE PER CITY OF ALBANY STANDARD DRAWING NO. 502
- 10 CONSTRUCT 4" ASPHALT PAVEMENT SECTION PER DETAILS THIS SHEET. REGRADE EXISTING SUBGRADE ADD BASE ROCK AS NEEDED PER NOTE 2 ABOVE. ASPHALT BASE COURSE SHALL CONSIST OF (1)-2" LIFT OF LEVEL 2, 1/2" DENSE GRADED HMAC. TOP COURSE SHALL BE (1)-2" LIFT OF LEVEL 2, 1/2" DENSE GRADED HMAC. REFER TO ALBANY STANDARD DWG 301



DESIGNED: DNH	REVISIONS
DRAWN: DNH	NO:
CHECKED: DG	DATE:
DATE: 2/25/2020	BY:

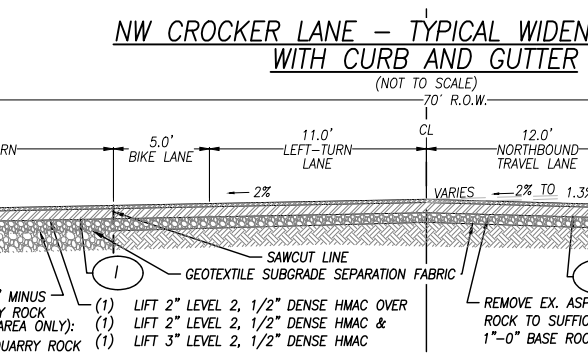


4 NW GIBSON HILL RD @ NW CROCKER LN

- SCALE: 1"=5'
- SW ADA RAMP
- ABBREVIATIONS:
- AC: ASPHALT CONCRETE PAVING
  - ADA: COMPLIES WITH CURRENT AMERICANS WITH DISABILITIES ACT STANDARDS
  - BW: BACK OF SIDEWALK
  - BC: BACK OF CURB
  - BP: BOTTOM OF BASE PLATE
  - CC: CONCRETE (NOT IN OF WALKING SURFACE)
  - EX: EXISTING
  - FG: FINISH GRADE
  - FL: FLOW LINE
  - FW: FRONT OF WALK
  - GL: GUTTER LINE
  - LA: ADA LANDING AREA
  - ML: MATCHLINE
  - PC: POINT OF CURVATURE
  - PL: PROPERTY LINE
  - PT: POINT OF TANGENCY
  - RA: ADA RAMP
  - SW: SIDEWALK
  - TFC: TOP FACE OF CURB
  - TC: TOP OF CURB
  - TD: TRUNCATED DOMES

X = SHEET #  
Y = NOTE #

4 NW GIBSON HILL RD @ NW CROCKER LN



**OREGON DEPARTMENT OF TRANSPORTATION**  
TRAFFIC-ROADWAY SECTION

**Branch ENGINEERING**  
civil • transportation  
structural • geotechnical  
SURVEYING

310 5th Street  
Springfield, OR 97477  
p: 541.746.0637  
www.BranchEngineering.com

**GIBSON HILL ROAD IMPROVEMENTS**  
TRAFFIC SIGNAL AT NW CROCKER LANE  
& NW GIBSON HILL ROAD  
BENTON COUNTY

DESIGNED BY: DAN HAGA, PE  
REVIEWED BY: DAMIEN GILBERT, PE  
DRAFTED BY: DNH

**ACCESS RAMP  
DETAILS PLAN**

TSSU No. 4CA161

ACCESS RAMP DETAILS PLAN WEST SIDE OF NW CROCKER LN
SHEET NO. 5 OF 14
PROJECT NO: ST-19-01
FILE: 18-139 PLANS



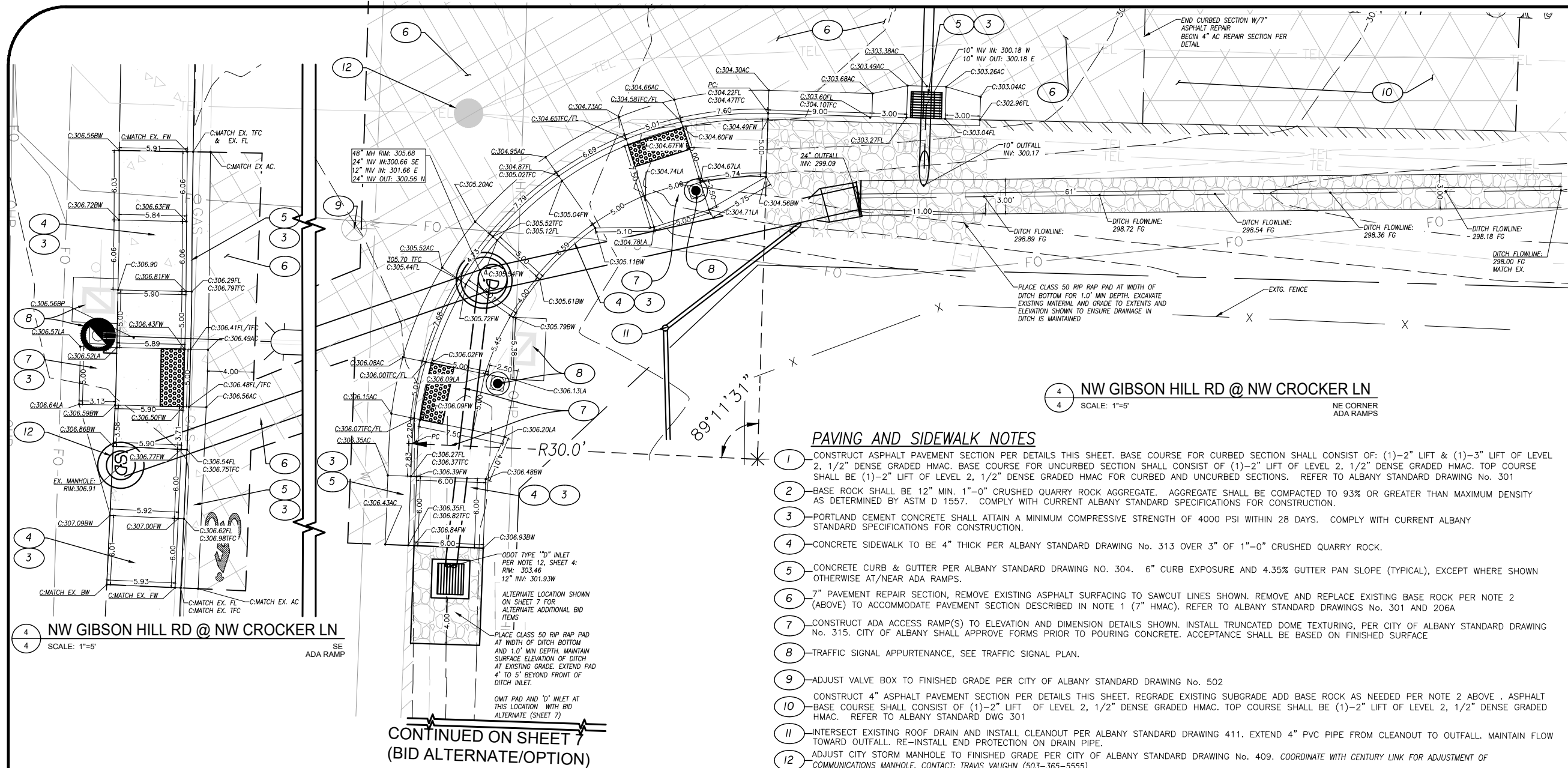
**Branch ENGINEERING**  
Since 1977

310 5th Street  
Springfield, OR 97477  
p: 541.746.0637  
www.BranchEngineering.com

PUBLIC WORKS DEPARTMENT  
ENGINEERING SERVICES

SIGNAL IMPROVEMENTS

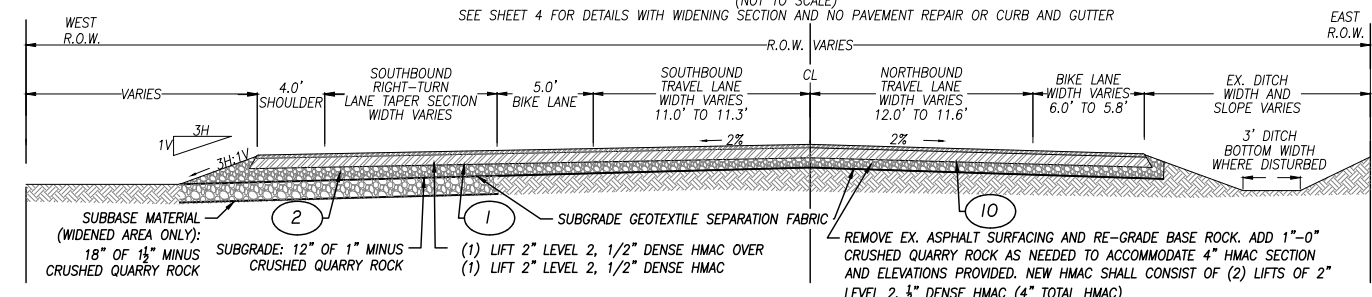
Z:\2018\18-139 Albany Crocker At Gibson Hill Signal\DWG\Branch\18-139 PLANS.dwg RD PLAN DET 2/24/2020 4:55 PM DNH



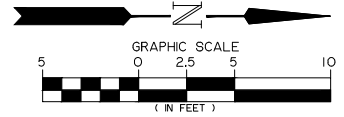
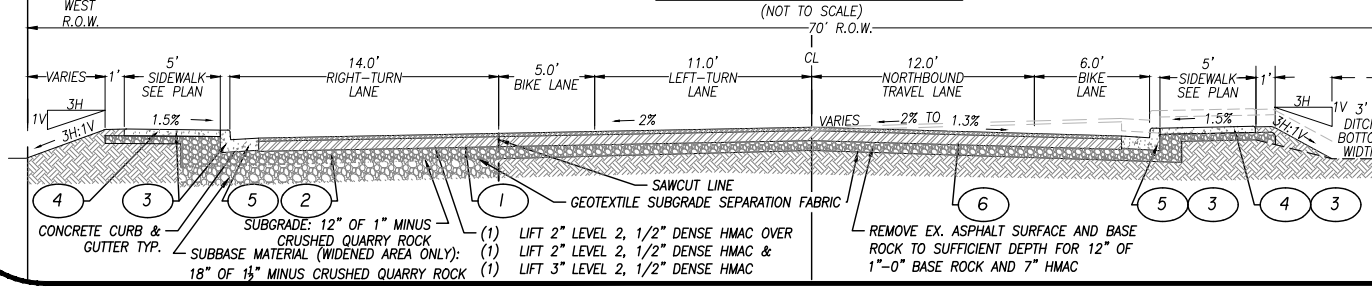
**PAVING AND SIDEWALK NOTES**

- 1 CONSTRUCT ASPHALT PAVEMENT SECTION PER DETAILS THIS SHEET. BASE COURSE FOR CURBED SECTION SHALL CONSIST OF: (1)-2" LIFT & (1)-3" LIFT OF LEVEL 2, 1/2" DENSE GRADED HMA. BASE COURSE FOR UNCURBED SECTION SHALL CONSIST OF (1)-2" LIFT OF LEVEL 2, 1/2" DENSE GRADED HMA. TOP COURSE SHALL BE (1)-2" LIFT OF LEVEL 2, 1/2" DENSE GRADED HMA FOR CURBED AND UNCURBED SECTIONS. REFER TO ALBANY STANDARD DRAWING No. 301
- 2 BASE ROCK SHALL BE 12" MIN. 1"-0" CRUSHED QUARRY ROCK AGGREGATE. AGGREGATE SHALL BE COMPACTED TO 93% OR GREATER THAN MAXIMUM DENSITY AS DETERMINED BY ASTM D 1557. COMPLY WITH CURRENT ALBANY STANDARD SPECIFICATIONS FOR CONSTRUCTION.
- 3 PORTLAND CEMENT CONCRETE SHALL ATTAIN A MINIMUM COMPRESSIVE STRENGTH OF 4000 PSI WITHIN 28 DAYS. COMPLY WITH CURRENT ALBANY STANDARD SPECIFICATIONS FOR CONSTRUCTION.
- 4 CONCRETE SIDEWALK TO BE 4" THICK PER ALBANY STANDARD DRAWING No. 313 OVER 3" OF 1"-0" CRUSHED QUARRY ROCK.
- 5 CONCRETE CURB & GUTTER PER ALBANY STANDARD DRAWING NO. 304. 6" CURB EXPOSURE AND 4.35% GUTTER PAN SLOPE (TYPICAL), EXCEPT WHERE SHOWN OTHERWISE AT/NEAR ADA RAMPS.
- 6 7" PAVEMENT REPAIR SECTION, REMOVE EXISTING ASPHALT SURFACING TO SAWCUT LINES SHOWN. REMOVE AND REPLACE EXISTING BASE ROCK PER NOTE 2 (ABOVE) TO ACCOMMODATE PAVEMENT SECTION DESCRIBED IN NOTE 1 (7" HMA). REFER TO ALBANY STANDARD DRAWINGS No. 301 AND 206A
- 7 CONSTRUCT ADA ACCESS RAMP(S) TO ELEVATION AND DIMENSION DETAILS SHOWN. INSTALL TRUNCATED DOME TEXTURING, PER CITY OF ALBANY STANDARD DRAWING No. 315. CITY OF ALBANY SHALL APPROVE FORMS PRIOR TO POURING CONCRETE. ACCEPTANCE SHALL BE BASED ON FINISHED SURFACE
- 8 TRAFFIC SIGNAL APPURTENANCE, SEE TRAFFIC SIGNAL PLAN.
- 9 ADJUST VALVE BOX TO FINISHED GRADE PER CITY OF ALBANY STANDARD DRAWING No. 502
- 10 CONSTRUCT 4" ASPHALT PAVEMENT SECTION PER DETAILS THIS SHEET. REGRADE EXISTING SUBGRADE ADD BASE ROCK AS NEEDED PER NOTE 2 ABOVE. ASPHALT BASE COURSE SHALL CONSIST OF (1)-2" LIFT OF LEVEL 2, 1/2" DENSE GRADED HMA. TOP COURSE SHALL BE (1)-2" LIFT OF LEVEL 2, 1/2" DENSE GRADED HMA. REFER TO ALBANY STANDARD DWG 301
- 11 INTERSECT EXISTING ROOF DRAIN AND INSTALL CLEANOUT PER ALBANY STANDARD DRAWING 411. EXTEND 4" PVC PIPE FROM CLEANOUT TO OUTFALL. MAINTAIN FLOW TOWARD OUTFALL. RE-INSTALL END PROTECTION ON DRAIN PIPE.
- 12 ADJUST CITY STORM MANHOLE TO FINISHED GRADE PER CITY OF ALBANY STANDARD DRAWING No. 409. COORDINATE WITH CENTURY LINK FOR ADJUSTMENT OF COMMUNICATIONS MANHOLE, CONTACT: TRAVIS VAUGHN (503-365-5555)

**NW CROCKER LANE – WIDENED SECTION WITH PAVEMENT REPAIR, NO CURB AND GUTTER**



**NW CROCKER LANE – TYPICAL WIDENED SECTION WITH CURB AND GUTTER**



X = SHEET #  
Y = NOTE #



**OREGON DEPARTMENT OF TRANSPORTATION**  
TRAFFIC-ROADWAY SECTION

**Branch ENGINEERING**  
civil • transportation  
structural • geotechnical  
surveying  
www.BranchEngineering.com  
Springfield, OR 97477  
p. 541.746.0637

**GIBSON HILL ROAD IMPROVEMENTS**  
TRAFFIC SIGNAL AT NW CROCKER LANE  
& NW GIBSON HILL ROAD  
BENTON COUNTY

DESIGNED BY: DAN HAGA, PE  
REVIEWED BY: DAMIEN GILBERT, PE  
DRAFTED BY: DNH

**ACCESS RAMP  
DETAILS PLAN**  
TSSU No. 4CA161

**PUBLIC WORKS DEPARTMENT  
ENGINEERING SERVICES**



**Branch ENGINEERING**  
Since 1977  
310 5th Street  
Springfield, OR 97477  
p. 541.746.0637  
www.BranchEngineering.com

**ACCESS RAMP  
DETAILS PLAN  
EAST SIDE  
OF NW CROCKER LN**

SHEET NO. 6 OF 14  
PROJECT NO: ST-19-01  
FILE: 18-139 PLANS

DESIGNED: DNH	REVISIONS
DRAWN: DNH	NO:
CHECKED: DG	DATE:
DATE: 2/25/2020	BY:

2: V2018A (18-139 Albany Crocker At Gibson Hill Signal) (V2018) (Branch) (18-139 PLANS) (sig) RD PLAN DET (2) 2/24/2020 4:55 PM DNH



**SIGNING NOTES:**

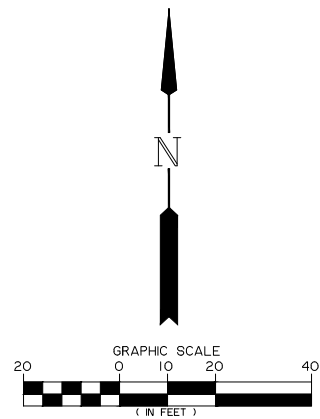
- EXN** MAINTAIN AND PROTECT EXISTING SIGN (N) AND SIGN SUPPORT
- N** INSTALL NEW SIGN (N) ON NEW (M) SIGN SUPPORT
- N** INSTALL NEW SIGN (N)
- RSN** REMOVE AND SAVE EXISTING SIGN (N). MAINTAIN AND PROTECT EXISTING SUPPORT. RETURN REMOVED SIGN TO CITY OF ALBANY.
- RSN** REMOVE AND SAVE EXISTING SIGN (N) AND (M) SIGN SUPPORT. RETURN TO CITY OF ALBANY.
- N** INSTALL NEW SIGN (N) ON EXISTING (M) SIGN SUPPORT

N = SIGN NUMBER  
M = POST MATERIAL  
MATERIAL OPTIONS ARE  
W = WOOD  
G = GALVANIZED STEEL POST  
ST=PERFORATED STAINLESS STEEL TUBE

ALL PERMANENT SIGNAGE SHALL BE INSTALLED PER CITY OF ALBANY STANDARD DRAWING NO. 208 AND/OR 209.

SEE SIGNAL PLAN SHEETS FOR OVERHEAD MOUNTED SIGNS

SIGN SPACING TO SIGNAL AHEAD AND/OR NEW TRAFFIC PATTERN AHEAD SIGNAGE IS 300 FEET STARTING AT STOP BAR ON NW CROCKER LN AND NW GIBSON HILL RD.



**STRIPING NOTES:**

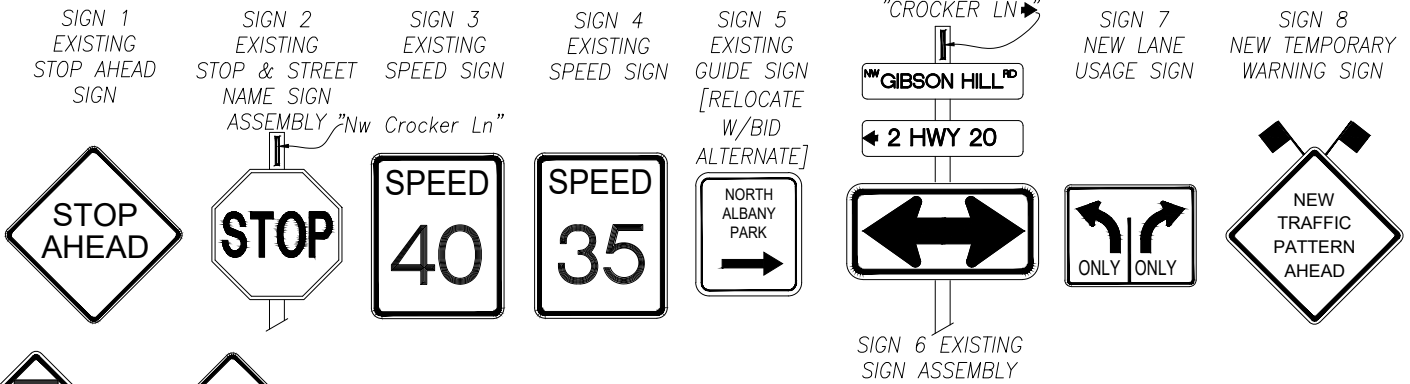
- EX T** MAINTAIN AND PROTECT EXISTING STRIPING; TYPE SHOWN
- RX T** REMOVE EXISTING PAVEMENT MARKINGS BY MICROGRINDING, TYPE SHOWN. CONFORM TO 2018 OREGON STANDARD SPECIFICATIONS FOR CONSTRUCTION SECTION 225
- W-2** INSTALL 8" WIDE WHITE LINE PER MANUFACTURER'S SPECIFICATIONS; REFER TO ODOT STANDARD DRAWINGS TM500 AND TM530 FOR DETAILS
- W** INSTALL 4" WIDE WHITE LINE PER MANUFACTURER'S SPECIFICATIONS; REFER TO ODOT STANDARD DRAWINGS TM500 AND TM530 FOR DETAILS
- ND** INSTALL NARROW DOUBLE YELLOW NO-PASS TWO 4" WIDE LINES PER MANUFACTURER'S SPECIFICATIONS; REFER TO ODOT STANDARD DRAWINGS TM500, TM530 AND TM560 FOR DETAILS
- WD-2** INSTALL 8" WIDE, WHITE DOTTED LINE PER MANUFACTURER'S SPECIFICATIONS; SEE STANDARD DRAWING TM500.
- LA** INSTALL LEFT TURN ARROW PER MANUFACTURER'S SPECIFICATIONS; SEE STANDARD DRAWING TM501
- RA** INSTALL RIGHT TURN ARROW PER MANUFACTURER'S SPECIFICATIONS; SEE STANDARD DRAWING TM501
- LSA** INSTALL LEFT TURN STRAIGHT ARROW PER MANUFACTURER'S SPECIFICATIONS; SEE STANDARD DRAWING TM501
- BS** INSTALL BIKE LANE STANDARD STENCIL; SEE STANDARD DRAWING TM503
- BL** INSTALL BIKE LEFT-TURN STENCIL; SEE STANDARD DRAWING TM503
- CW** INSTALL STANDARD CROSSWALK WITH TWO 1' WHITE BARS PER MANUFACTURER'S SPECIFICATIONS. SEE STANDARD DRAWINGS TM503 & TM530
- \*** TRANSITION STRIPING FROM END OF CURB AND GUTTER TO EXISTING STRIPING TO REMAIN AT MATCH POINT AS DIRECTED BY ENGINEER

ALL STRIPING MATERIALS SHALL COMPLY WITH DIVISION D 5.01 OF CITY OF ALBANY STREET AND ALLEY ENGINEERING STANDARDS 2015 EDITION.

EXISTING 4" YELLOW BROKEN LINES ARE SHOWN SCHEMATICALLY AND NOT MEANT TO REPRESENT ACTUAL BEGINNING OR ENDING OF BROKEN LINES.

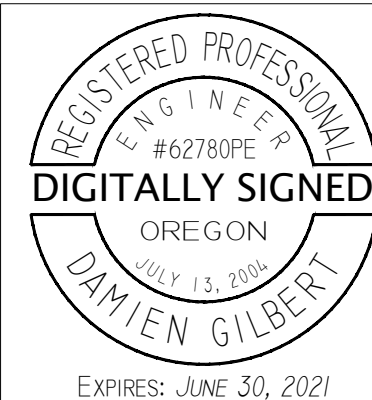
ALL LONGITUDINAL LANE MARKINGS SHALL BE PROFILED EXTRUDED THERMOPLASTIC EXCEPT LINES ADJACENT TO BIKE LANES, WHERE NON-PROFILED MARKINGS SHALL BE USED.

PERFORMED THERMOPLASTIC FILM SHALL BE USED FOR ALL CROSSWALK STRIPING AND LEGENDS.



**SIGN TABLE (NEW SIGNS)**

SIGN NO.	MUTCD	QTY	SUPPORT TYPE	BACKGROUND	LEGEND	SIZE	DESCRIPTION	TOTAL SF
7	R3-8LR	1	GALV.	ASTM TYPE IX WHITE RETROREFLECTIVE	NON REFLECTIVE BLACK	30"x36"	"LEFT AND RIGHT TURN ONLY" SIGN	7.5
8	W23-2	3	WOOD	ASTM TYPE IV YELLOW RETROREFLECTIVE	NON REFLECTIVE BLACK	36"x36"	"NEW TRAFFIC PATTERN AHEAD" SIGN	27
9	W3-3	3	GALV.	ASTM TYPE IV YELLOW RETROREFLECTIVE	NON REFLECTIVE BLACK	30"x30"	"SIGNAL AHEAD" SYMBOL SIGN	18.75
11	W16-8P	1	GALV.	ASTM TYPE IV YELLOW RETROREFLECTIVE	NON REFLECTIVE BLACK	8"x30"	Nw Crocker Ln, WARNING SIGN SUPPLEMENTAL PLAQUE	1.7



**OREGON DEPARTMENT OF TRANSPORTATION**  
TRAFFIC-ROADWAY SECTION

**Branch ENGINEERING**  
civil • transportation  
structural • geotechnical  
S U R V E Y I N G  
310 5th Street  
Springfield, OR 97477  
p: 541.746.0637  
www.BranchEngineering.com

**GIBSON HILL ROAD IMPROVEMENTS**  
TRAFFIC SIGNAL AT NW CROCKER LANE & NW GIBSON HILL ROAD BENTON COUNTY

DESIGNED BY: DAN HAGA, PE  
REVIEWED BY: DAMIEN GILBERT, PE  
DRAFTED BY: DNH

**SIGNING AND STRIPING PLAN**  
TSSU No. 4CA161

**SIGNING AND STRIPING PLAN**

SHEET NO. 8 OF 14

PROJECT NO: ST-19-01

FILE: 18-139 PLANS

**PUBLIC WORKS DEPARTMENT**  
**ENGINEERING SERVICES**



**Branch ENGINEERING**  
Since 1977  
310 5th Street  
Springfield, OR 97477  
p: 541.746.0637  
www.BranchEngineering.com

SIGNAL IMPROVEMENTS

Z:\2018\18-139 Albany Crocker At Gibson Hill Signal\WMS\Branch\18-139 PLANS\sig STRIPE PLAN 2/24/2020 4:55 PM DNH



# LEGEND

## CONTROLLERS

- 332S** INSTALL MODEL 332S CONTROLLER CABINET WITH 8" RISER FRAME PER STANDARD DRAWING TM482. ORIENT LOUVERED DOORS AS SHOWN
- C/ATC** INSTALL MODEL ATC CONTROLLER AND EQUIPMENT IN MODEL 332S CABINET.
- SDLC** INSTALL SYNCHRONOUS DATA LINK CONTROL (SDLC) CONNECTION.
- CID/656** INSTALL CLICK 656 CABINET INTERFACE DEVICE (CID) FOR RADAR DETECTION. SEE ODOT GREEN SHEETS FOR APPROVED PRODUCT.
- C** CONTROLLER, SEE TRAFFIC SIGNAL PLAN

## POLES

- EX/UP** MAINTAIN AND PROTECT EXISTING UTILITY POLE
- PP** INSTALL PEDESTRIAN SIGNAL PEDESTAL, SEE STANDARD DRAWING TM457
- MPL/N** INSTALL TYPE (N) TRAFFIC SIGNAL MAST ARM POLE WITH LUMINAIRE POLE ARM EXTENSION (25 FT MOUNTING HEIGHT), SEE CITY OF ALBANY STANDARD DRAWINGS TM631 AND TM632.
- MA/L** INSTALL (L) FT. TRAFFIC SIGNAL MAST ARM, SEE CITY OF ALBANY STANDARD DRAWINGS TM631 AND TM632.
- LA/L** INSTALL (L) FT. LUMINAIRE ARM, SEE ODOT STANDARD DRAWINGS TM629, TM650, & TM652 AND CITY OF ALBANY STANDARD DRAWINGS TM631 AND TM632.

## SIGNALS

- V/PH** INSTALL PHASE (PH) VEHICLE SIGNAL, SEE STANDARD DRAWINGS TM460 & TM462
- C/B/PH** INSTALL PHASE (PH=PHASE) PEDESTRIAN COUNTDOWN SIGNAL HEAD, SEE STANDARD DRAWINGS TM450 & TM457 AND TM467
- INSTALL PHASE (PH) AUDIBLE PEDESTRIAN PUSH BUTTON WITH VIBRO TACTILE ARROW AND INSTRUCTION SIGN, SEE STANDARD DRAWINGS TM450, TM467 AND DETAILS, SHEET 11. USE POLARA NAVIGATOR 4-WIRE SYSTEM OR APPROVED EQUAL.

## DETECTION

- R-N/T** INSTALL NEAR RANGE RADAR DETECTION UNIT (T= RADAR UNIT)
- R-F/T** INSTALL FAR RANGE RADAR DETECTION UNIT (T= RADAR UNIT)
- PHT/X** DEFINE PHASE (PH=PHASE) DETECTION ZONE ON RADAR (T=RADAR UNIT) WITH MAXTIME NUMBER (X=NUMBER)

## CABINETS

- BMCL** INSTALL BASE MOUNTED SERVICE CABINET 120/240 VOLT METERED FOR SIGNAL AND SIGNAL POLE MOUNTED ILLUMINATION SYSTEMS. SEE STANDARD DRAWINGS TM482 & TM485
- RTC** FURNISH AND INSTALL RECESSED TERMINAL CABINET, SEE DETAILS ON SHEET 13

# LEGEND (continued)

## CONDUITS

- (S)** INSTALL (S) INCH RIGID ELECTRICAL CONDUIT
- (S\*)** INSTALL (S) INCH RIGID ELECTRICAL CONDUIT SPARE FOR FUTURE USE
- (DC)** DETECTOR CONDUIT, SEE LOOP DETECTOR PLAN
- (EC)** TRAFFIC SIGNAL CONDUIT, SEE TRAFFIC SIGNAL PLAN
- (W)** INSTALL ELECTRICAL CONDUIT AND WIRING AS REQUIRED BY PACIFIC POWER FROM POWER SOURCE TO SERVICE CABINET. PROVIDE SERVICE WIRE SLACK ADEQUATE TO REACH POWER SOURCE COILED IN SERVICE CABINET.

## JUNCTION BOXES

- JB/T** INSTALL JUNCTION BOX (T=TYPE) PER STANDARD DRAWING TM472
- JB/SP** JUNCTION BOX, SEE TRAFFIC SIGNAL PLAN

## FIRE PREEMPTION

- FF/CH** INSTALL (CH) CHANNEL SHIELDED FIRE PREEMPTION DETECTOR CABLE, SEE STANDARD DRAWING TM465
- F-I/CH** INSTALL (CH) CHANNEL ONE-WAY FIRE PREEMPTION DETECTOR UNIT, SEE STANDARD DRAWING TM465

## SIGNS

- AL/SNS-1** FURNISH AND INSTALL ALUMINUM STREET NAME SIGN MARKED 'NW Gibson Hill Rd' PER STANDARD DRAWING TM223 AND DETAILS SHEET 11. INSTALL STREET NAME SIGN ON MAST ARM PER STANDARD DRAWING TM679 USING STAINLESS STEEL CLAMPS.
- AL/SNS-2** FURNISH AND INSTALL ALUMINUM STREET NAME SIGN MARKED 'NW Crocker Ln' PER STANDARD DRAWING TM223 AND DETAILS SHEET 11. INSTALL STREET NAME SIGN ON MAST ARM PER STANDARD DRAWING TM679 USING STAINLESS STEEL CLAMPS.
- AL/5R** FURNISH AND INSTALL ALUMINUM (30" X 36") RIGHT ARROW "ONLY" SIGN PER MUTCD R3-5R. INSTALL SIGN ON ADJUSTABLE BRACKET ASSEMBLY PER STANDARD DRAWING TM465. USE ASTM TYPE IX WHITE RETROREFLECTIVE BACKGROUND SHEETING AND BLACK NON-REFLECTIVE LEGEND
- AL/5L** FURNISH AND INSTALL ALUMINUM (30" X 36") LEFT ARROW "ONLY" SIGN PER MUTCD R3-5L. INSTALL SIGN ON ADJUSTABLE BRACKET ASSEMBLY PER STANDARD DRAWING TM465. USE ASTM TYPE IX WHITE RETROREFLECTIVE BACKGROUND SHEETING AND BLACK NON-REFLECTIVE LEGEND

## ILLUMINATION

- LED/W** INSTALL (W) WATT LED I.E.S. AMERICAN ELECTRIC 'AUTOBAHN' SERIES ATB2 60BLEDE70MVOLTR3 LUMINAIRE.
- PE/I** INSTALL PHOTO ELECTRONIC RELAY ON POLE PER STANDARD DRAWING TM465

# LEGEND (continued)

## WIRING

- RCC/T** FURNISH AND INSTALL RADAR DETECTION CONTROL CABLE (T=RADAR UNIT)
- X-N/G** INSTALL (X = NUMBER) OF CONTROL CABLE(S) WITH (N=NUMBER) OF (G = AWG WIRE SIZE) CONDUCTORS.
- N-12C** INSTALL (N) 12 AWG TYPE THWN WIRES (PEDESTRIAN SYSTEM COMMON).
- N/G** INSTALL (N) - (G) TYPE XHHW WIRES.

S-2 = SIDE MOUNT TWO WAY  
 G = AWG SIZE SHOWN  
 L = LENGTH SHOWN  
 N = NUMBER OF WIRES SHOWN

S = SIZE SHOWN  
 T = TYPE SHOWN  
 X = NUMBER OF CABLES SHOWN

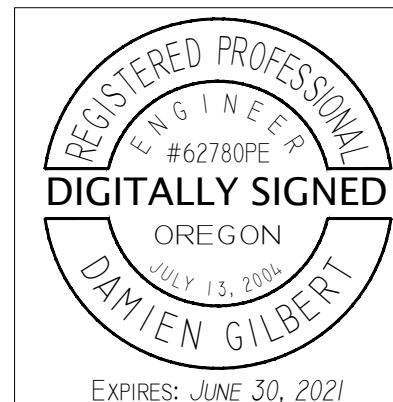
NOTES: LOCATIONS OF PROPOSED POLES, CONDUITS, JUNCTION BOXES AND DETECTION RADAR UNITS AS SHOWN ON THE PLANS ARE APPROXIMATE. ACTUAL LOCATIONS SHALL BE AS LOCATED IN THE FIELD BY THE ENGINEER.

ALL WORK SHALL CONFORM TO THE CURRENT ODOT STANDARD DRAWINGS AND STANDARD SPECIFICATIONS FOR HIGHWAY CONSTRUCTION, UNLESS REFERENCE IS MADE OTHERWISE IN THE CONSTRUCTION NOTE. ALL TRAFFIC SIGNAL ELECTRICAL PRODUCTS/MATERIALS SHALL BE PRE-APPROVED FROM THE QUALIFIED PRODUCTS LIST AND/OR FROM ODOT BLUE & GREEN SHEETS, WHERE APPLICABLE.

SIGN MOUNTING OPTIONS  
 B: ADJUSTABLE SIGN BRACKET ASSEMBLY PER PROJECT BLUE SHEETS

SIGNAL MOUNTING OPTIONS  
 B: ADJUSTABLE SIGNAL BRACKET ASSEMBLY PER PROJECT BLUE SHEETS

SIGNAL HEAD TYPES  
 2 = 12" R, 12" Y, 12" G



**OREGON DEPARTMENT OF TRANSPORTATION**  
 TRAFFIC-ROADWAY SECTION

**Branch ENGINEERING**  
 civil • transportation  
 structural • geotechnical  
 SURVEYING  
 310 5th Street  
 Springfield, OR 97477  
 p: 541.746.0637  
 www.BranchEngineering.com

**GIBSON HILL ROAD IMPROVEMENTS**  
 TRAFFIC SIGNAL AT NW CROCKER LANE  
 & NW GIBSON HILL ROAD  
 BENTON COUNTY

DESIGNED BY: DAN HAGA, PE  
 REVIEWED BY: DAMIEN GILBERT, PE  
 DRAFTED BY: DNH

**TRAFFIC SIGNAL LEGEND**  
 TSSU No. 4CA161

DESIGNED: DNH	REVISIONS
DRAWN: DNH	NO:
CHECKED: DG	BY:
DATE: 2/25/2020	

**PUBLIC WORKS DEPARTMENT**  
**ENGINEERING SERVICES**

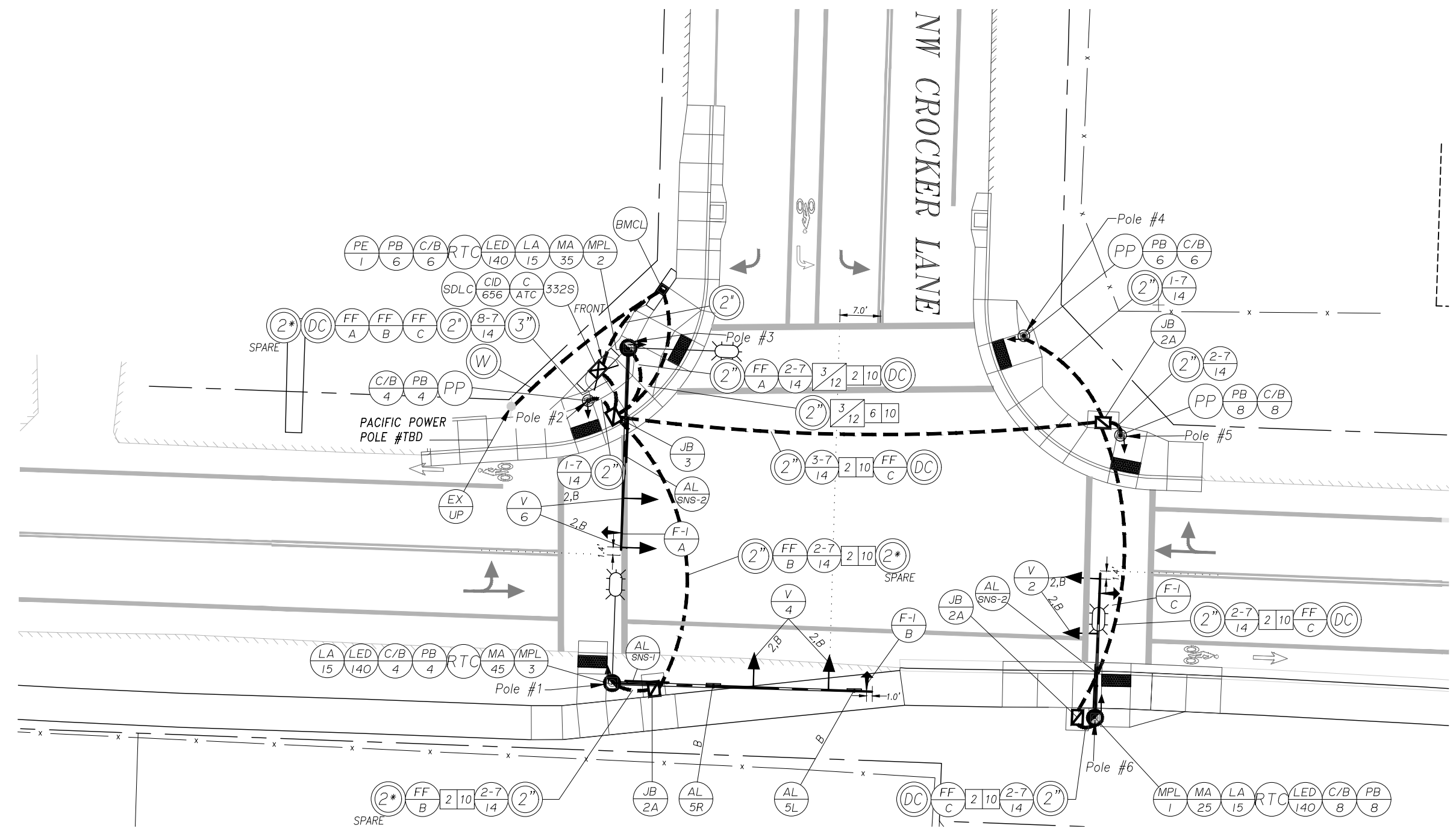
**Branch ENGINEERING**  
 Since 1977  
 310 5th Street  
 Springfield, OR 97477  
 p: 541.746.0637  
 www.BranchEngineering.com

**SIGNAL IMPROVEMENTS**

<b>TRAFFIC SIGNAL LEGEND</b>	
SHEET NO.	9 OF 14
PROJECT NO:	ST-19-01
FILE:	18-139 PLANS

Z:\2018\18-139 Albany Crocker At Gibson Hill Signal\WGS\Branch\18-139 PLANS.dwg SIGNAL LEGEND 2/24/2020 4:55 PM DNH

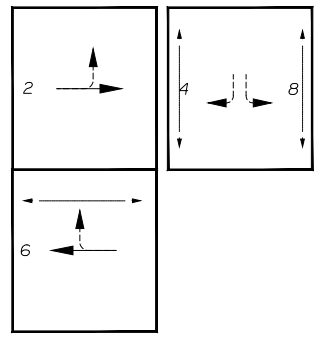
Z:\2018\18-139 Albany Crocker At Gibson Hill Signal\DWG\Branch\18-139 PLANS.dwg SIGNAL PLAN 2/24/2020 4:55 PM DNH



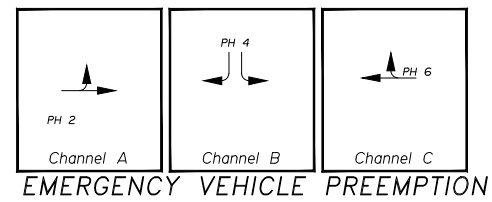
SEE SHEET 8 FOR LEGEND

NOTE: FIELD VERIFY MEASUREMENTS BEFORE CONSTRUCTION

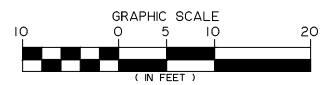
UTILITIES NOT SHOWN  
SEE EXISTING UTILITIES PLAN SHEET



NORMAL PHASE ROTATION



EMERGENCY VEHICLE PREEMPTION



**OREGON DEPARTMENT OF TRANSPORTATION**  
TRAFFIC-ROADWAY SECTION

**Branch ENGINEERING**  
civil • transportation  
structural • geotechnical  
SURVEYING INC.  
310 5th Street  
Springfield, OR 97477  
p: 541.746.0637  
www.BranchEngineering.com

**GIBSON HILL ROAD IMPROVEMENTS**  
TRAFFIC SIGNAL AT NW CROCKER LANE  
& NW GIBSON HILL ROAD  
BENTON COUNTY

DESIGNED BY: DAN HAGA, PE  
REVIEWED BY: DAMIEN GILBERT, PE  
DRAFTED BY: DNH

TRAFFIC SIGNAL PLAN

TSSU No. 4CA161

DESIGNED: DNH	REVISIONS
DRAWN: DNH	NO:
CHECKED: DG	DATE:
DATE: 2/25/2020	BY:

**PUBLIC WORKS DEPARTMENT**  
**ENGINEERING SERVICES**

**Branch ENGINEERING**  
Since 1977  
310 5th Street  
Springfield, OR 97477  
p: 541.746.0637  
www.BranchEngineering.com

**SIGNAL IMPROVEMENTS**

<b>TRAFFIC SIGNAL PLAN</b>	
SHEET NO.	10 OF 14
PROJECT NO:	ST-19-01
FILE:	18-139 PLANS



## POLE ENTRANCE CHART

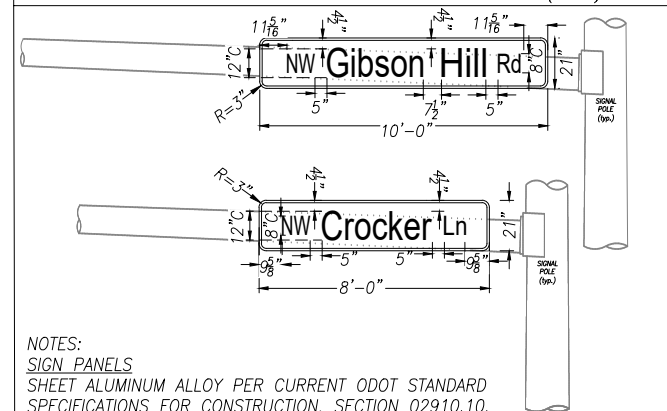
SEE CITY OF ALBANY STANDARD DRAWINGS TM631 AND TM632			EQUIPMENT ON POLE					EQUIPMENT ON MAST ARM (LENGTH IN FEET & EQUIPMENT TYPE)								FOUNDATION INFORMATION SEE CITY OF ALBANY STANDARD DRAWINGS TM631 AND TM632		LUMINAIRES							
POLE NO.	DWG. NO.	TYPE	PED. SIGNAL DEG.	TERM. CABINET DEG.	PED PUSH BUTTON DEG.	TRAFFIC SIGNAL DEG.	PHOTO ELECTRIC CELL	ARM LENGTH (FEET)	D1	D2	D3	D4	D5	D6	D7	D8	POLE TYPE	REQUIRED FOUNDATION DEPTH	ARM LENGTH	ARM DEG.	MOUNTING HEIGHT	TYPE	*RADAR DET. UNIT	TYPE	WATTAGE
1		MPL3	175	90	175	-	-	45	1.0	3.0	7.5	20.5	27.5	39.0			MPL3	9'-0"	15	270	30	LED	1.0	3	140
2		PP			270																				
3		MPL2	180	90	180	-	180	35	0.5	3.0	5.5	9.0	19.0				MPL2	8'-6"	15	270	30	LED	-	3	140
4		PP			180																				
5		PP			90																				
6		MPL1	90	180	90	-	-	25	1.0	3.5	5.5	10.5	19.5				MPL1	8'-0"	15	0	30	LED	-	3	140

V2 = TRAFFIC SIGNAL TYPE 2, ADJUSTABLE BRACKET MOUNT (SEE STANDARD DRAWING TM462)  
SA = SIGN, 30" x 36" ALUMINUM w/ ADJUSTABLE BRACKET MOUNT (SEE STANDARD DRAWING TM465)

F = FIRE PREEMPTION (SEE STANDARD DRAWING TM465)  
R = RADAR DETECTION UNIT (SEE SHEET 13)  
SNS = STREET NAME SIGN (SEE STANDARD DRAWING TM679)

\* = DISTANCE MEASURED IN FEET FROM END OF LUMINAIRE ARM

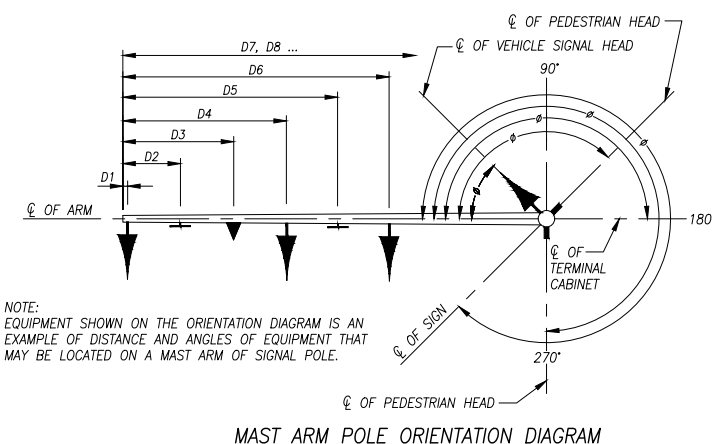
### STREET NAME SIGN DETAILS (nts)



NOTES:  
SIGN PANELS  
SHEET ALUMINUM ALLOY PER CURRENT ODOT STANDARD SPECIFICATIONS FOR CONSTRUCTION, SECTION 02910.10. DEBURR (SMOOTH) ALL CUT EDGES

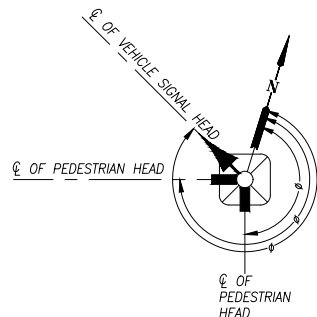
**STREET NAME SIGN DETAILS**  
STREET NAME SIGNS SHALL MEET THE REQUIREMENTS OF SECTION 02910 OF THE CURRENT ODOT STANDARD SPECIFICATIONS FOR CONSTRUCTION. STREET NAME SIGN BACKGROUND SHEETING SHALL BE RETROREFLECTIVE GREEN AND SHALL MEET THE REQUIREMENTS OF ASTM TYPE III OR IV MATERIAL. STREET NAME SIGN LEGENDS SHALL BE RETROREFLECTIVE SILVER-WHITE AND SHALL MEET THE REQUIREMENTS OF ASTM TYPE IX MATERIAL. USE PRODUCTS FROM THE CURRENT ODOT QUALIFIED PRODUCTS LIST

NOTES  
WHITE LETTERING, SEE DRAWING TM231  
1" WHITE BORDER AROUND SIGN  
MOUNT ON MAST ARM  
ATTACH WITH STANDARD MOUNTING BRACKETS, 2 EACH  
ALL NUTS, BOLTS, SCREWS, WASHERS AND OTHER FASTENERS SHALL BE STAINLESS STEEL PER DRAWING TM679



NOTE:  
EQUIPMENT SHOWN ON THE ORIENTATION DIAGRAM IS AN EXAMPLE OF DISTANCE AND ANGLES OF EQUIPMENT THAT MAY BE LOCATED ON A MAST ARM OF SIGNAL POLE.

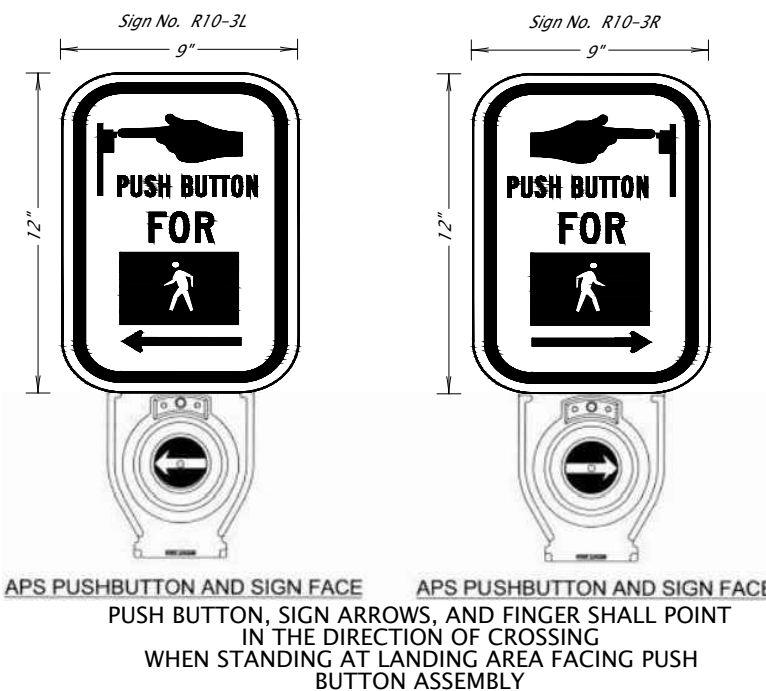
MAST ARM POLE ORIENTATION DIAGRAM



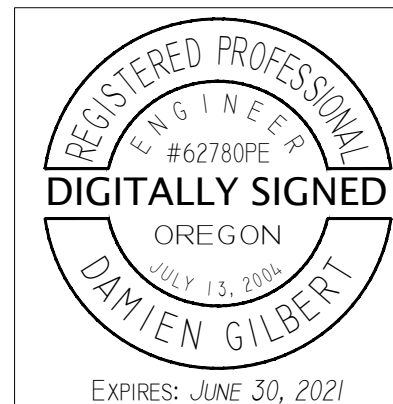
THE NORTH ARROW SHOWN RELATES TO ZERO DEGREES ON PEDESTRIAN AND VEHICLE SIGNAL POLES. DEGREES SHOWN IN THE POLE ENTRANCE CHART SHOW THE DEGREES CLOCKWISE FROM PLAN SHEET NORTH ARROW (ZERO) TO EQUIPMENT LOCATED ON THE POLE.

NOTE:  
EQUIPMENT SHOWN ON THE ORIENTATION DIAGRAM IS A CLARIFICATION OF ANGLES OF EQUIPMENT THAT MAY BE LOCATED ON A PEDESTRIAN PEDESTAL OR VEHICLE PEDESTAL.

PEDESTRIAN PEDESTAL / VEHICLE PEDESTAL ORIENTATION DIAGRAM



**APS PUSHBUTTON AND SIGN FACE**      **APS PUSHBUTTON AND SIGN FACE**  
PUSH BUTTON, SIGN ARROWS, AND FINGER SHALL POINT IN THE DIRECTION OF CROSSING WHEN STANDING AT LANDING AREA FACING PUSH BUTTON ASSEMBLY



**OREGON DEPARTMENT OF TRANSPORTATION**  
TRAFFIC-ROADWAY SECTION

**Branch ENGINEERING**  
civil • transportation  
structural • geotechnical  
SURVEYING  
310 5th Street  
Springfield, OR 97477  
p: 541.746.0637  
www.BranchEngineering.com

**GIBSON HILL ROAD IMPROVEMENTS**  
TRAFFIC SIGNAL AT NW CROCKER LANE  
& NW GIBSON HILL ROAD  
BENTON COUNTY

DESIGNED BY: DAN HAGA, PE  
REVIEWED BY: DAMIEN GILBERT, PE  
DRAFTED BY: DNH

**TRAFFIC SIGNAL  
DETAILS**

TSSU No. **4CA161**

**TRAFFIC SIGNAL  
DETAILS  
POLE ENTRANCE  
CHART**

SHEET NO. 12 OF 14

PROJECT NO: ST-19-01

FILE: 18-139 PLANS

**PUBLIC WORKS DEPARTMENT  
ENGINEERING SERVICES**



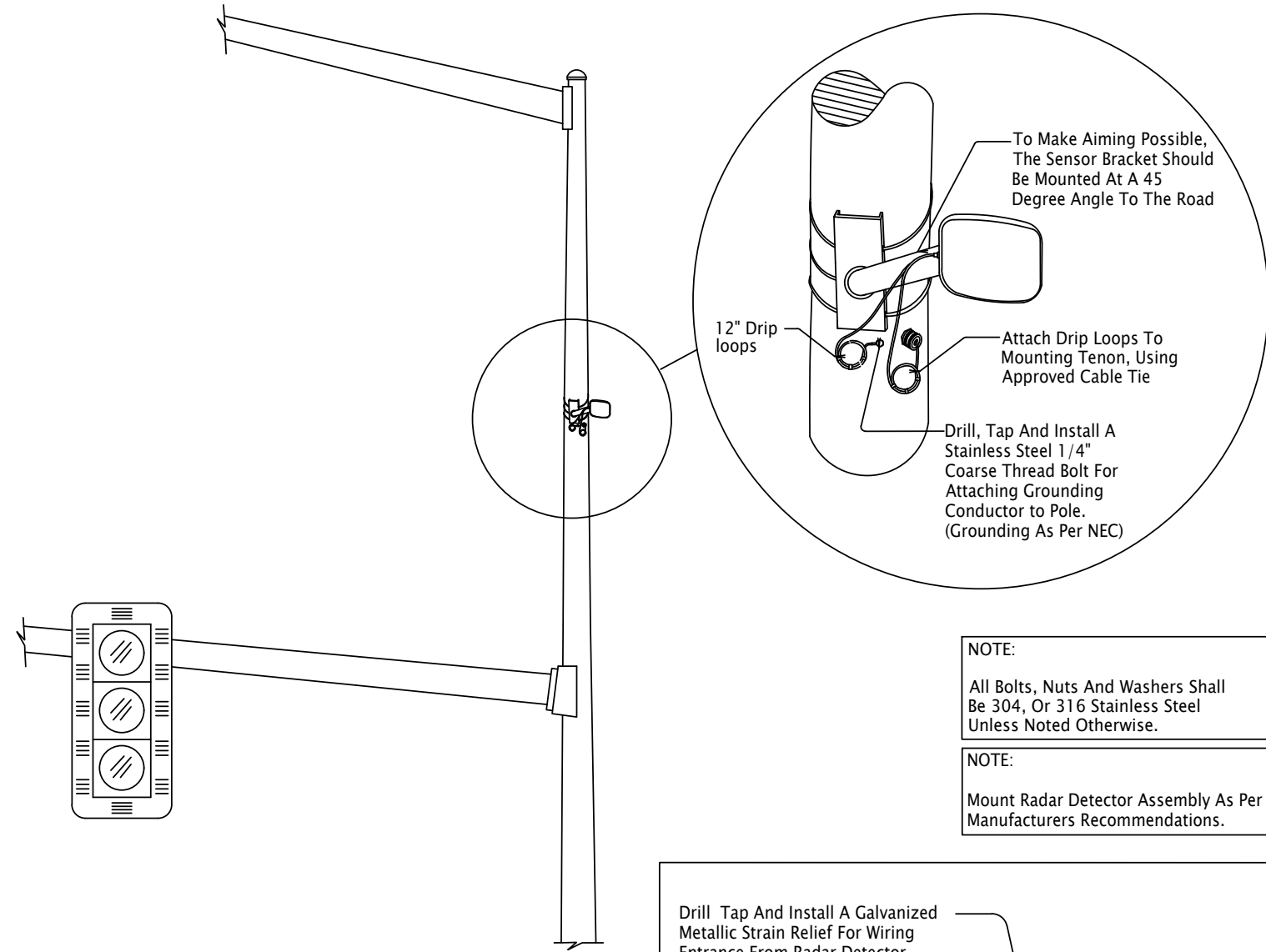
**Branch ENGINEERING**  
Since 1977  
310 5th Street  
Springfield, OR 97477  
p: 541.746.0637  
www.BranchEngineering.com

SIGNAL IMPROVEMENTS

DESIGNED: DNH  
DRAWN: DNH  
CHECKED: DG  
DATE: 2/25/2020  
REVISIONS  
NO: BY:

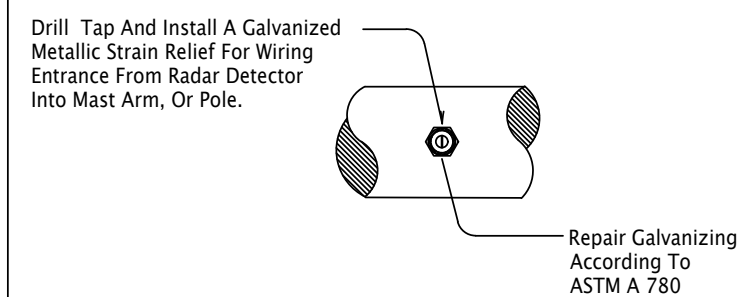


# VERTICAL SIGNAL POLE MOUNT



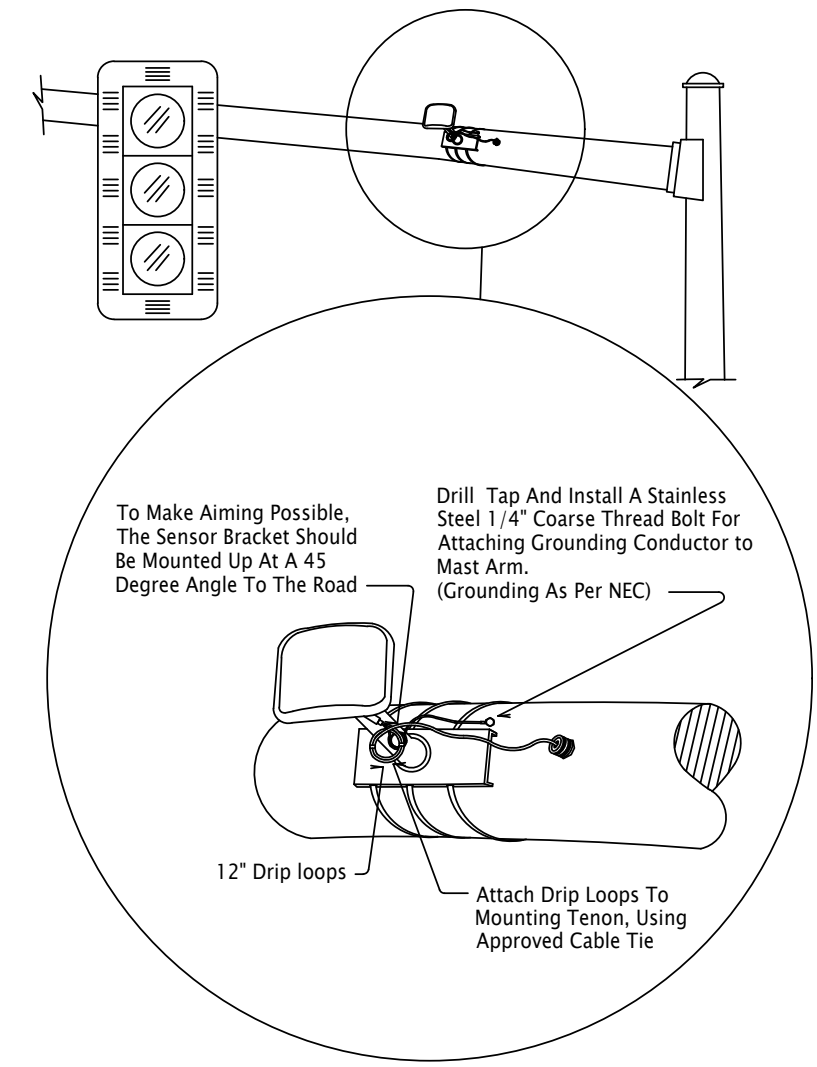
**NOTE:**  
All Bolts, Nuts And Washers Shall Be 304, Or 316 Stainless Steel Unless Noted Otherwise.

**NOTE:**  
Mount Radar Detector Assembly As Per Manufacturers Recommendations.



# CABLE GRIP

# HORIZONTAL MAST ARM MOUNT



*CONTACT ODOT REGION 2 SIGNAL OPERATIONS ENGINEER TWO WEEKS PRIOR TO RADAR UNIT INSTALLATION TO COORDINATE FIELD VISIT TO DETERMINE MOUNTING LOCATION, HEIGHT AND AIMING.*



**OREGON DEPARTMENT OF TRANSPORTATION**  
TRAFFIC-ROADWAY SECTION

**Branch ENGINEERING**  
civil • transportation  
structural • geotechnical  
SURVEYING INC.  
310 5th Street  
Springfield, OR 97477  
p: 541.746.0637  
www.BranchEngineering.com  
Springfield, OR | Salem, OR

**GIBSON HILL ROAD IMPROVEMENTS**  
TRAFFIC SIGNAL AT NW CROCKER LANE  
& NW GIBSON HILL ROAD  
BENTON COUNTY

DESIGNED BY: DAN HAGA, PE  
REVIEWED BY: DAMIEN GILBERT, PE  
DRAFTED BY: DNH

**TRAFFIC SIGNAL**  
FOUNDATION DETAILS

TSSU No. **4C1161**

DESIGNED: DNH	REVISIONS
DRAWN: DNH	NO:
CHECKED: DG	BY:
DATE: 2/25/2020	

**PUBLIC WORKS DEPARTMENT**  
**ENGINEERING SERVICES**

**Branch ENGINEERING** Since 1977  
310 5th Street  
Springfield, OR 97477  
p: 541.746.0637  
www.BranchEngineering.com

SIGNAL IMPROVEMENTS

TRAFFIC SIGNAL  
DETAILS  
RADAR DETECTOR  
MOUNTING

SHEET NO. **14 OF 14**

PROJECT NO: ST-19-01

FILE: 18-139 PLANS

2: \2018\18-139 Albany Crocker At Gibson Hill Signal\WKS\Branch\18-139 PLANS.dwg SIGNAL DET DWG (2) 2/24/2020 4:55 PM DNH