

CITY OF ALBANY

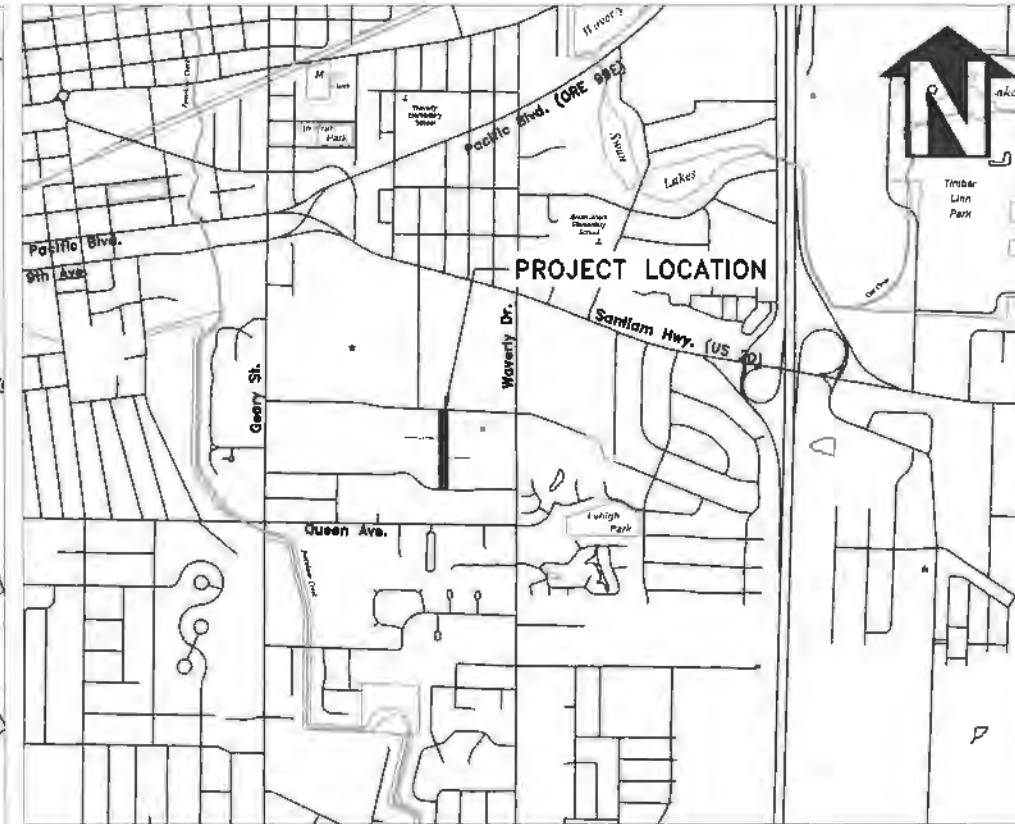
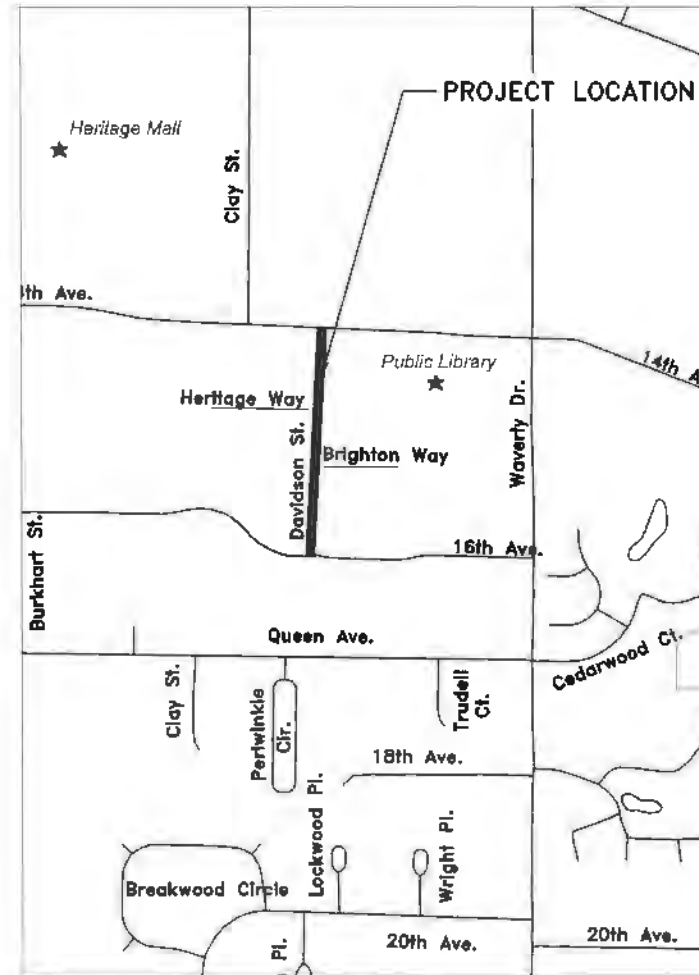
ST-21-02, DAVIDSON STREET REHABILITATION: 14TH TO 16TH AVE

SHEET INDEX

SHEET NO. 1,	COVER & GENERAL NOTES
SHEET NO. 2,	TYPICAL STREET CROSS SECTION
SHEETS NO. 3-4,	STREET CONSTRUCTION
SHEETS NO. 5-7,	WATER LINE CONSTRUCTION
SHEETS NO. 8,	PAVEMENT MARKINGS AND SIGNAGE
SHEETS NO. 9,	TEMPORARY TRAFFIC CONTROL PLAN
SHEET NO. 10,	EROSION PREVENTION AND SEDIMENT CONTROL PLAN

LEGEND

	EXISTING WATER SERVICE		EXISTING POWER POLE
	RECONNECT EXISTING METER		EXISTING STORM MANHOLE
	INSTALL NEW SERVICE WITH NO METER		NEW CURB INLET
	REPLACE EXISTING METER WITH NEW METER		NEW CATCH BASIN
	AIR RELEASE VALVE		NEW CURB INLET
	EXISTING WATER VALVE		NEW CATCH BASIN
	NEW WATER VALVE		EXISTING STREET LIGHT
	EXISTING WATER LINE		EXISTING TRAFFIC SIGN
	EXISTING GAS LINE		NEW TRAFFIC SIGN
	EXISTING STORM LINE		EXISTING HYDRANT
	EXISTING SANITARY SEWER LINE		NEW HYDRANT
	EXISTING FIBER OPTIC DUCT		REDUCER
	EXISTING POWER LINES		
	NEW WATER LINE		
	NEW STORM LINE		
	NEW STORM DRAIN MAINLINE CLEANOUT		
	NEW STORM DRAIN MANHOLE		



Vicinity Map
Not to Scale

GENERAL NOTES

- ALL CONSTRUCTION SHALL CONFORM TO THE CITY OF ALBANY STANDARD CONSTRUCTION SPECIFICATIONS AND ASSOCIATED STANDARD DRAWINGS. THE CURRENT VERSION OF THE CITY OF ALBANY STANDARD CONSTRUCTION SPECIFICATIONS CAN BE FOUND ON THE CITY'S WEBSITE AT WWW.CITYOFALBANY.NET.
- UTILITIES SHOWN ARE FOR REFERENCE ONLY. FOR A FIELD LOCATE, CALL THE UTILITIES NOTIFICATIONS CENTER AT 1-800-332-2344.
- OPERATING ACCESS FOR CITY MAINTENANCE PERSONNEL TO EXISTING AND NEW WATER VALVES AND MANHOLES SHALL BE CONTINUOUSLY MAINTAINED BY THE CONTRACTOR DURING ALL CONSTRUCTION ACTIVITIES.
- CONTRACTOR SHALL VERIFY ALL EXISTING PIPE ELEVATIONS, PIPE DIAMETERS, AND PIPE MATERIALS AT CONNECTION AND ABANDONMENT LOCATIONS PRIOR TO CONSTRUCTION. ANY DISCREPANCIES SHALL BE REPORTED TO ENGINEER PRIOR TO BEGINNING WORK.
- ATTENTION: OREGON LAW REQUIRES YOU TO FOLLOW RULES ADOPTED BY THE OREGON UTILITY NOTIFICATION CENTER. THOSE RULES ARE SET FORTH IN OAR 952-001-0010 THROUGH OAR 952-001-0090. YOU MAY OBTAIN COPIES OF THE RULES BY CALLING THE CENTER. (NOTE: THE TELEPHONE NUMBER FOR THE OREGON UTILITY NOTIFICATION CENTER IS (503) 232-1987).
- CONTRACTOR SHALL BE RESPONSIBLE FOR PROPER INSTALLATION AND MAINTENANCE OF ALL EROSION PREVENTION SEDIMENT CONTROL (EPSC) MEASURES IN ACCORDANCE WITH LOCAL, STATE, AND FEDERAL REGULATIONS UNTIL ALL CONSTRUCTION IS COMPLETED AND APPROVED BY THE CITY OF ALBANY, AND VEGETATION/LANDSCAPING IS ESTABLISHED. FOR GUIDANCE, REFER TO THE CITY OF ALBANY EPSC MANUAL WHICH CAN BE FOUND AT www.cityofalbany.net.

DESIGNED: L. SCHUMACHER	REVISIONS
DRAWN: A. MONACO	NO: --
CHECKED: L. SCHUMACHER	BY: --
DATE: 3/17/2021	DATE: --

PUBLIC WORKS DEPARTMENT
ENGINEERING SERVICES

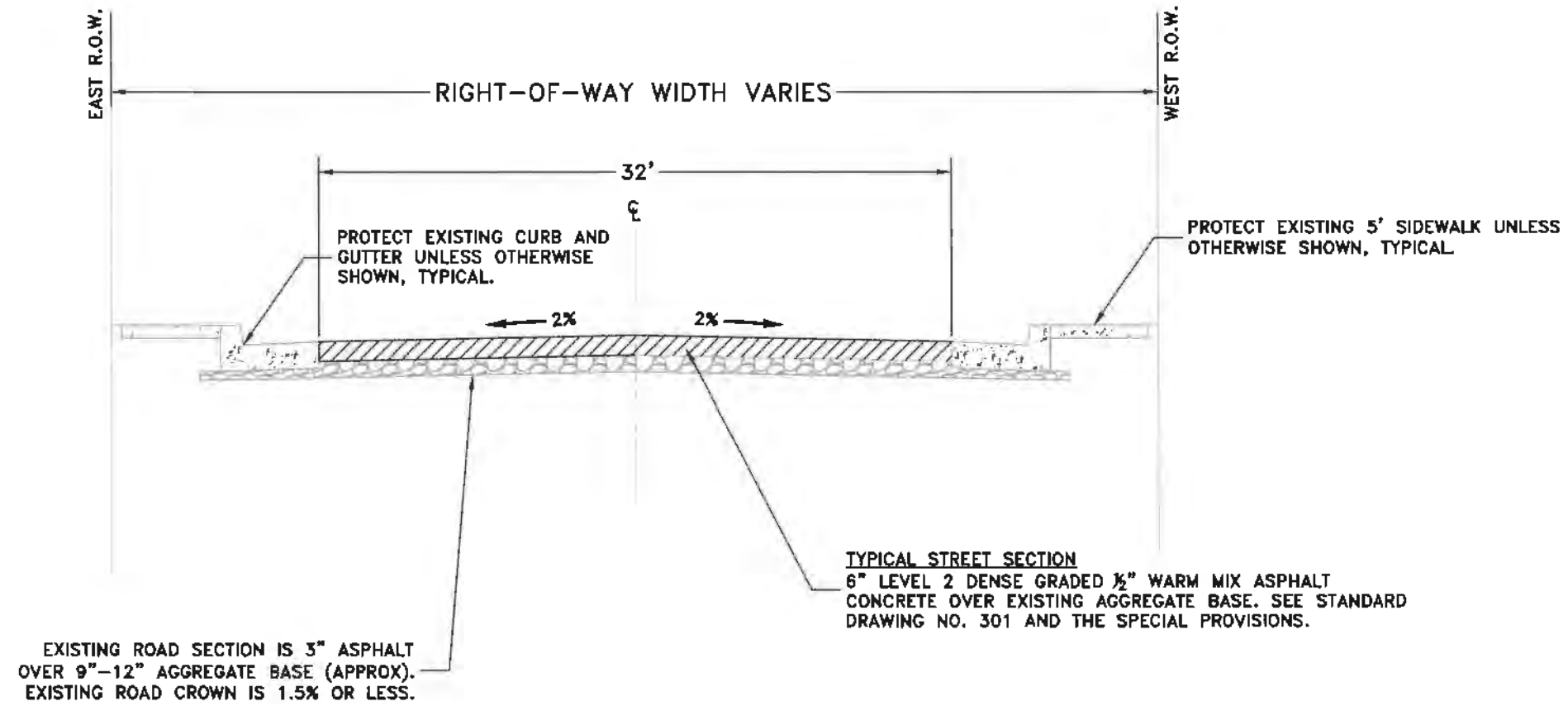


EXPIRES: 06/30/2022

SHEET NO. 1 OF 10
PROJECT NO: ST-21-02
FILE: FILENAME.DWG

ST-21-02, DAVIDSON STREET REHABILITATION: 14TH TO 16TH AVE


DAVIDSON STREET TYPICAL STREET CROSS SECTION
 STA 0+48 TO 8+66
 (NOT TO SCALE)



DESIGNED: L. SCHUMACHER
 DRAWN: A. MONACO
 CHECKED: L. SCHUMACHER
 DATE: 3/17/2021

REVISIONS	
NO.	BY:

PUBLIC WORKS DEPARTMENT
ENGINEERING SERVICES



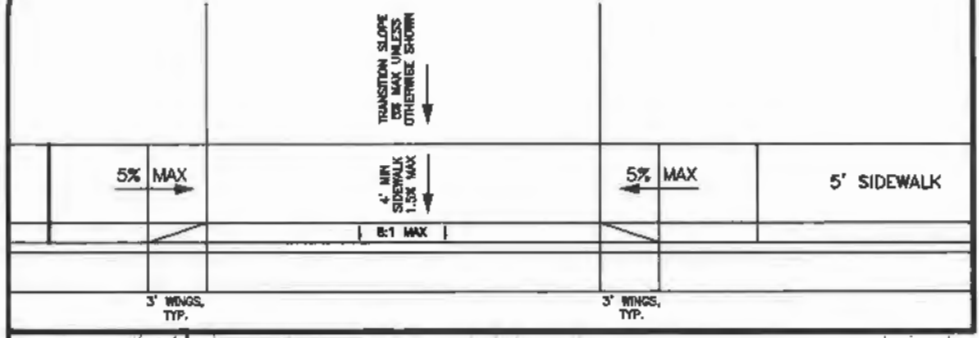
ST-21-02, DAVIDSON STREET REHABILITATION: 14TH TO 16TH AVE
TYPICAL STREET CROSS SECTION



EXPIRES: 06/30/2022
 SHEET NO. 2 OF 10
 PROJECT NO: ST-21-02
 FILE: BASE.DWG

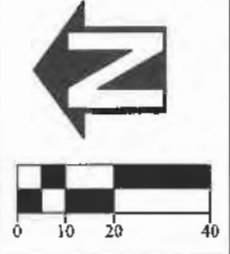
DETAIL A: DEPRESSED SIDEWALK AT DRIVEWAY APPROACH

NOT TO SCALE

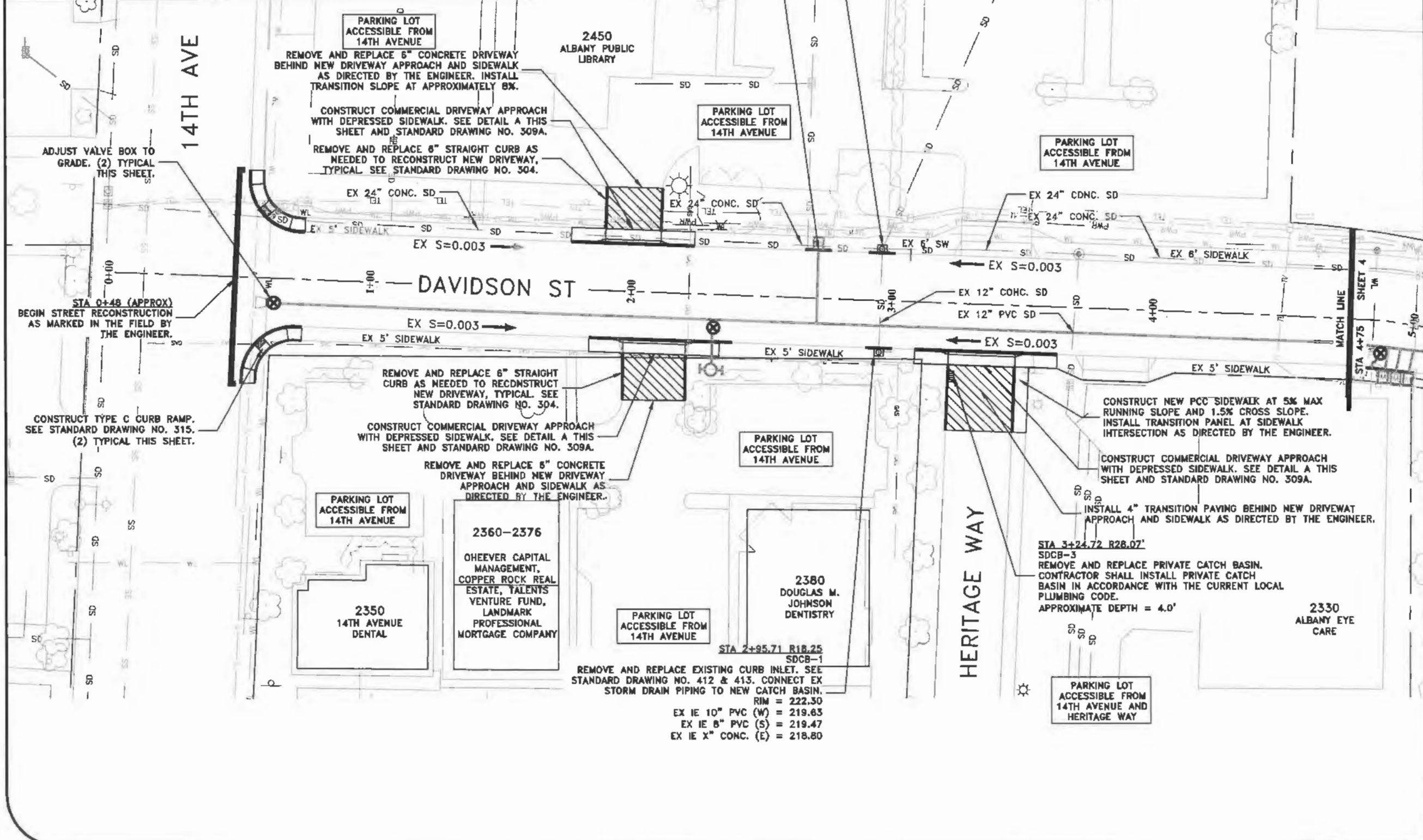


STA 2+95.72 R18.27
SDCB-2
REMOVE AND REPLACE EXISTING CURB INLET. SEE STANDARD DRAWING NO. 412 & 413. CONNECT EX STORM DRAIN PIPING TO NEW CATCH BASIN.
RIM = 222.32
EX IE 12" RCP (W) = 218.22
EX IE 24" RCP (S) = 217.37
EX IE 24" RCP (N) = 217.37

REMOVE AND REPLACE CURB AND GUTTER WHERE SHOWN AND AS DIRECTED BY THE ENGINEER. SEE STANDARD DRAWING NO. 304. TYPICAL



DESIGNED: L. SCHUMACHER	REVISIONS
DRAWN: A. MONACO	NO: --
CHECKED: L. SCHUMACHER	BY: --
DATE: 3/17/2021	DATE: --



**PUBLIC WORKS DEPARTMENT
ENGINEERING SERVICES**



**ST-21-02, DAVIDSON STREET REHABILITATION: 14TH TO 16TH AVE
STREET CONSTRUCTION**



EXPIRES: 06/30/2022
SHEET NO. 3 OF 10
PROJECT NO: ST-21-02
FILE: BASE.DWG

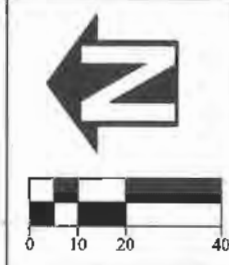
BRIGHTON WAY BUSINESSES INCLUDE:
 2411A - EDWARD JONES INVESTMENTS
 2411B - RISE
 2443 - SECURITY ALARM CORPORATION

PARKING LOT AND GARBAGE
 PICK-UP/DELIVERY AREA ONLY
 ACCESSIBLE FROM DAVIDSON ST

REMOVE AND REPLACE CURB AND GUTTER WHERE
 SHOWN AND AS DIRECTED BY THE ENGINEER. SEE
 STANDARD DRAWING NO. 304. TYPICAL

BRIGHTON WAY
 (DEAD END)

STA 6+49.66 R18.21
 SDCB-5
 REMOVE AND REPLACE EXISTING CURB INLET. SEE
 STANDARD DRAWING NO. 412 & 413. CONNECT EX
 STORM DRAIN PIPING TO NEW CATCH BASIN.
 RIM = 223.37
 EX IE 12" RCP (W) = 218.95
 EX IE 24" RCP (E) = 218.92
 EX IE 12" RCP (S) = 218.64
 EX IE 24" RCP (N) = 218.62



DESIGNED: L. SCHUMACHER	REVISIONS
DRAWN: A. MONACO	NO: BY:
CHECKED: L. SCHUMACHER	DATE: 3/17/2021
DATE:	

EX 24" CONC. SD

ADJUST VALVE TO
 BOX TO GRADE. (9)
 TYPICAL THIS SHEET.

VACANT LOT

1521

1523

2433

16TH AVE

REMOVE AND REPLACE CURB RAMP
 LANDING AND 6" CURB BEHIND
 LANDING AS NEEDED TO ABANDON
 WATER VALVE BOXES AFTER
 ACCEPTANCE OF NEW WATER LINE.
 PROTECT EXISTING CURB RAMP
 WINGS AND CURB AND GUTTER.
 SEE STANDARD DRAWING NO. 315.

STA 8+66 (APPROX)
 END STREET RECONSTRUCTION
 AS MARKED IN THE FIELD BY
 THE ENGINEER.

EX 6' SIDEWALK

EX 24" CONC. SD

EX 6' SIDEWALK

EX S=0.003

EX 12" CONC. SD

EX S=0.003

MATCH LINE

STA 4+75

EX 5' SIDEWALK

EX S=0.003

EX 12" CONC. SD

7+00

DAVIDSON ST

EX S=0.003

EX 5' SIDEWALK

EX S=0.003

ADJUST MANHOLE TO FINISHED GRADE.
 REMOVE AND REPLACE FRAME AND COVER.
 SEE STANDARD DRAWING NO. 407 AND 409.

CONSTRUCT TYPE C CURB RAMP.
 SEE STANDARD DRAWING NO. 315.

PARKING LOT AND GARBAGE
 PICK-UP/DELIVERY AREA ONLY
 ACCESSIBLE FROM DAVIDSON ST

STA 6+47.29 R18.02
 SDCB-4
 REMOVE AND REPLACE EXISTING CURB INLET. SEE
 STANDARD DRAWING NO. 412 & 413. CONNECT EX
 STORM DRAIN PIPING TO NEW CATCH BASIN.
 RIM = 223.44
 EX IE 4" PVC (W) = 219.74 (APPROX)
 EX IE 12" RCP (E) = 219.84

MEDICAL
 TRANSPORT ACCESS
 OFF OF DAVIDSON
 STREET

PARKING LOT
 ACCESSIBLE FROM
 16TH AVENUE

1560
 BROOKDALE HERITAGE PLAZA
 SENIOR LIVING

PUBLIC WORKS DEPARTMENT
 ENGINEERING SERVICES



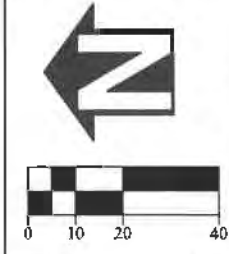
ST-21-02, DAVIDSON STREET REHABILITATION: 14TH TO 16TH AVE
 STREET CONSTRUCTION



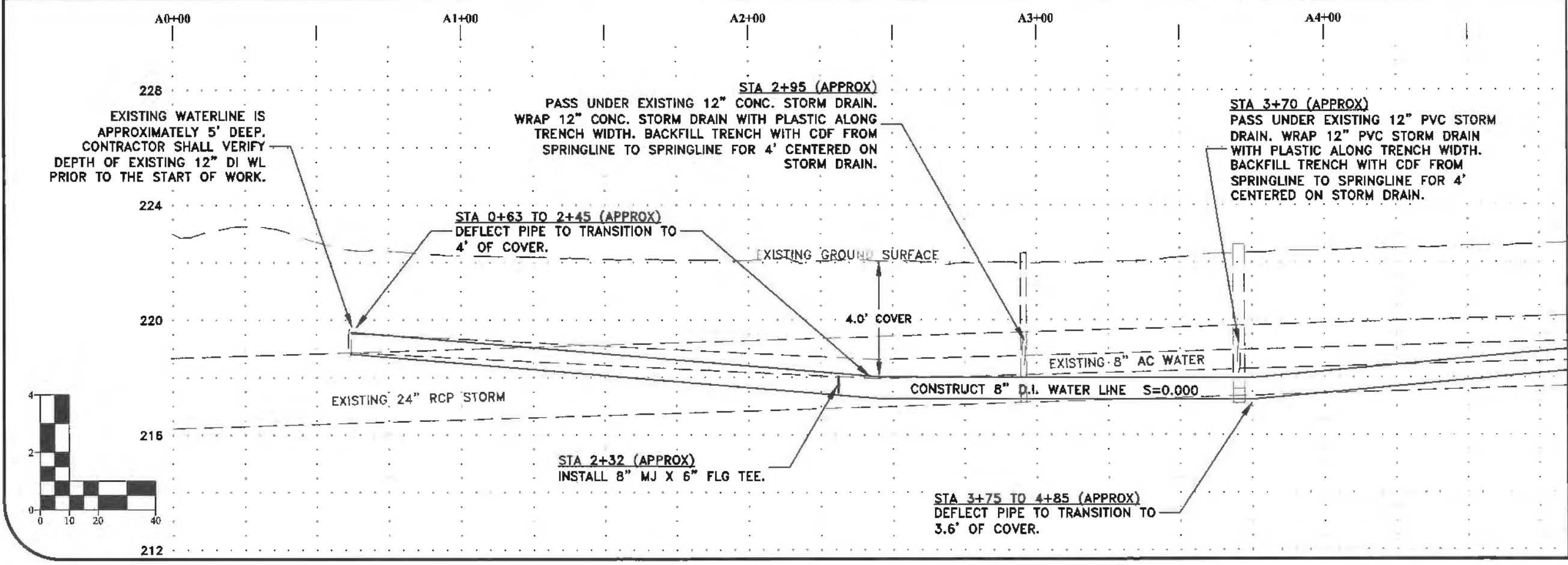
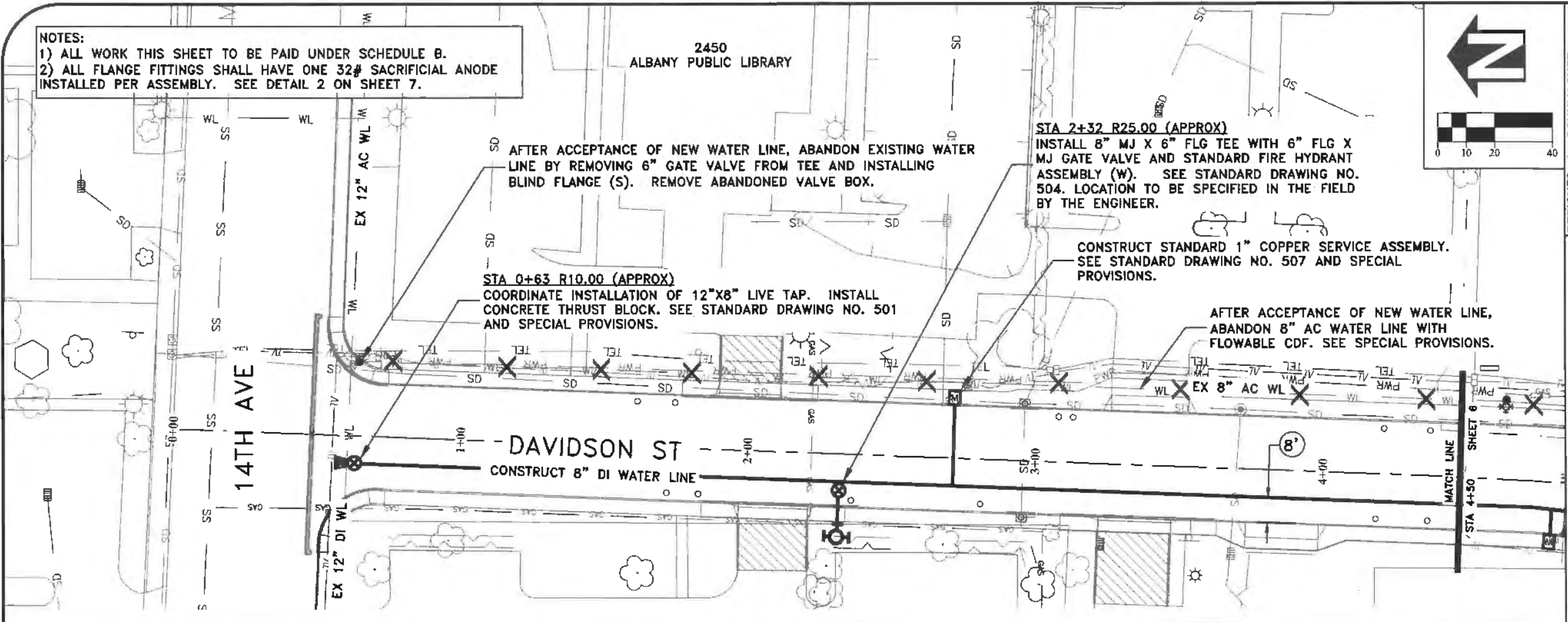
EXPIRES: 06/30/2022
SHEET NO. 4 OF 10
PROJECT NO: ST-21-02
FILE: BASE.DWG

NOTES:
 1) ALL WORK THIS SHEET TO BE PAID UNDER SCHEDULE B.
 2) ALL FLANGE FITTINGS SHALL HAVE ONE 32# SACRIFICIAL ANODE INSTALLED PER ASSEMBLY. SEE DETAIL 2 ON SHEET 7.

2450
 ALBANY PUBLIC LIBRARY



DESIGNED: L. SCHUMACHER	REVISIONS
DRAWN: A. MONACO	NO: ---
CHECKED: L. SCHUMACHER	BY: ---
DATE: 3/17/2021	DATE: ---

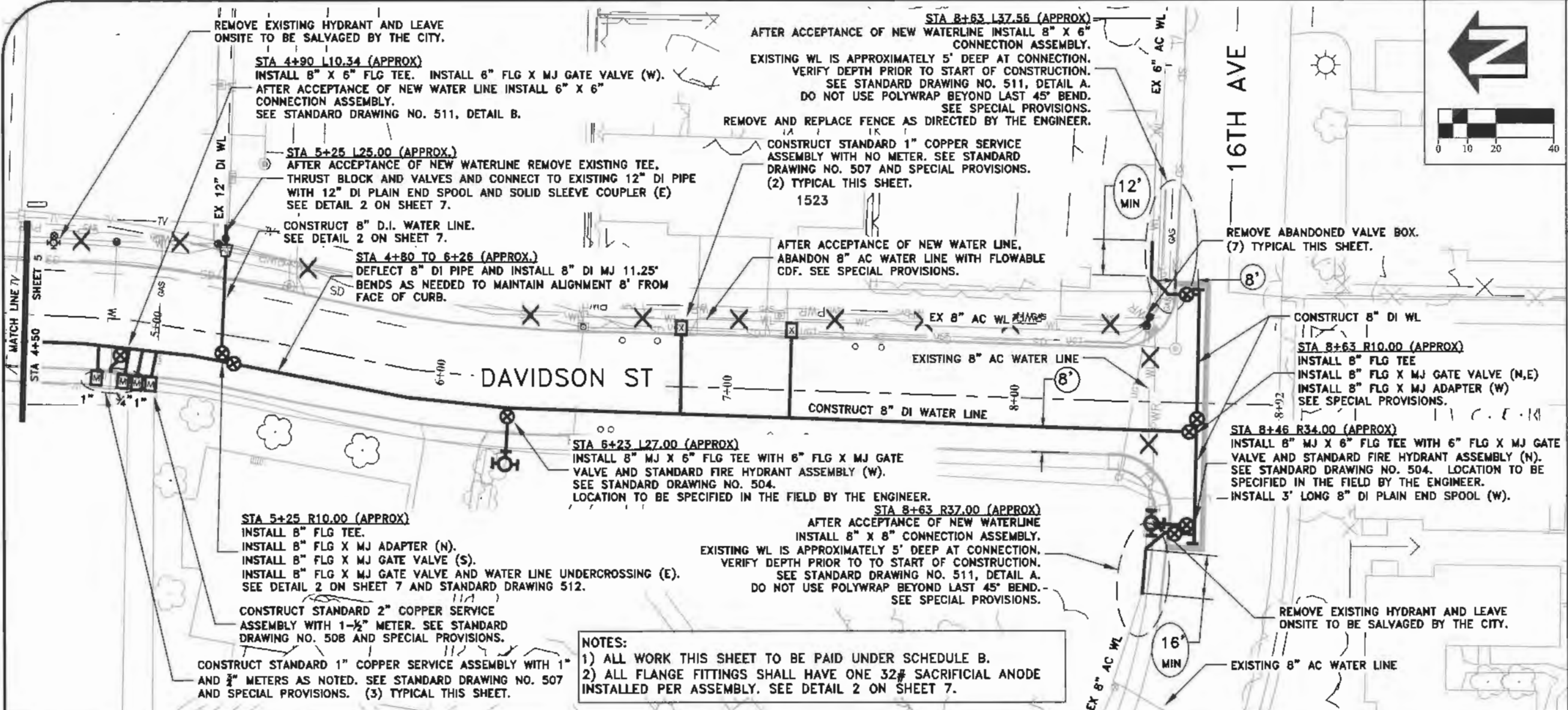


PUBLIC WORKS DEPARTMENT
 ENGINEERING SERVICES

ST-21-02, DAVIDSON STREET REHABILITATION: 14TH TO 16TH AVE
 WATER LINE CONSTRUCTION



EXPIRES: 06/30/2022
 SHEET NO. 5 OF 10
 PROJECT NO: ST-21-02
 FILE: BASE.DWG



REMOVE EXISTING HYDRANT AND LEAVE ONSITE TO BE SALVAGED BY THE CITY.

STA 4+90 110.34 (APPROX)
 INSTALL 8" X 6" FLG TEE. INSTALL 6" FLG X MJ GATE VALVE (W).
 AFTER ACCEPTANCE OF NEW WATER LINE INSTALL 6" X 6" CONNECTION ASSEMBLY.
 SEE STANDARD DRAWING NO. 511, DETAIL B.

STA 5+25 125.00 (APPROX)
 AFTER ACCEPTANCE OF NEW WATERLINE REMOVE EXISTING TEE. THRUST BLOCK AND VALVES AND CONNECT TO EXISTING 12" DI PIPE WITH 12" DI PLAIN END SPOOL AND SOLID SLEEVE COUPLER (E) SEE DETAIL 2 ON SHEET 7.

CONSTRUCT 8" D.I. WATER LINE. SEE DETAIL 2 ON SHEET 7.

STA 4+80 TO 6+26 (APPROX)
 DEFLECT 8" DI PIPE AND INSTALL 8" DI MJ 11.25" BENDS AS NEEDED TO MAINTAIN ALIGNMENT 8' FROM FACE OF CURB.

STA 8+63 137.56 (APPROX)
 AFTER ACCEPTANCE OF NEW WATERLINE INSTALL 8" X 6" CONNECTION ASSEMBLY.
 EXISTING WL IS APPROXIMATELY 5' DEEP AT CONNECTION. VERIFY DEPTH PRIOR TO START OF CONSTRUCTION. SEE STANDARD DRAWING NO. 511, DETAIL A. DO NOT USE POLYWRAP BEYOND LAST 45° BEND. SEE SPECIAL PROVISIONS.

REMOVE AND REPLACE FENCE AS DIRECTED BY THE ENGINEER.

CONSTRUCT STANDARD 1" COPPER SERVICE ASSEMBLY WITH NO METER. SEE STANDARD DRAWING NO. 507 AND SPECIAL PROVISIONS. (2) TYPICAL THIS SHEET. 1523

AFTER ACCEPTANCE OF NEW WATER LINE, ABANDON 8" AC WATER LINE WITH FLOWABLE CDF. SEE SPECIAL PROVISIONS.

REMOVE ABANDONED VALVE BOX. (7) TYPICAL THIS SHEET.

STA 8+63 R10.00 (APPROX)
 INSTALL 8" FLG TEE
 INSTALL 8" FLG X MJ GATE VALVE (N,E)
 INSTALL 8" FLG X MJ ADAPTER (W)
 SEE SPECIAL PROVISIONS.

STA 8+46 R34.00 (APPROX)
 INSTALL 8" MJ X 6" FLG TEE WITH 6" FLG X MJ GATE VALVE AND STANDARD FIRE HYDRANT ASSEMBLY (N). SEE STANDARD DRAWING NO. 504. LOCATION TO BE SPECIFIED IN THE FIELD BY THE ENGINEER.
 -INSTALL 3' LONG 8" DI PLAIN END SPOOL (W).

STA 5+25 R10.00 (APPROX)
 INSTALL 8" FLG TEE.
 INSTALL 8" FLG X MJ ADAPTER (N).
 INSTALL 8" FLG X MJ GATE VALVE (S).
 INSTALL 8" FLG X MJ GATE VALVE AND WATER LINE UNDERCROSSING (E).
 SEE DETAIL 2 ON SHEET 7 AND STANDARD DRAWING 512.

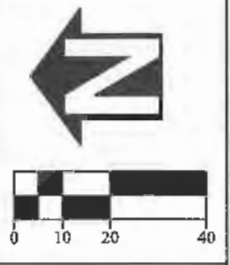
CONSTRUCT STANDARD 2" COPPER SERVICE ASSEMBLY WITH 1-1/2" METER. SEE STANDARD DRAWING NO. 508 AND SPECIAL PROVISIONS.

CONSTRUCT STANDARD 1" COPPER SERVICE ASSEMBLY WITH 1" AND 3/4" METERS AS NOTED. SEE STANDARD DRAWING NO. 507 AND SPECIAL PROVISIONS. (3) TYPICAL THIS SHEET.

STA 6+23 127.00 (APPROX)
 INSTALL 8" MJ X 6" FLG TEE WITH 6" FLG X MJ GATE VALVE AND STANDARD FIRE HYDRANT ASSEMBLY (W).
 SEE STANDARD DRAWING NO. 504.
 LOCATION TO BE SPECIFIED IN THE FIELD BY THE ENGINEER.

STA 8+63 R37.00 (APPROX)
 AFTER ACCEPTANCE OF NEW WATERLINE INSTALL 8" X 8" CONNECTION ASSEMBLY.
 EXISTING WL IS APPROXIMATELY 5' DEEP AT CONNECTION. VERIFY DEPTH PRIOR TO START OF CONSTRUCTION. SEE STANDARD DRAWING NO. 511, DETAIL A. DO NOT USE POLYWRAP BEYOND LAST 45° BEND. SEE SPECIAL PROVISIONS.

NOTES:
 1) ALL WORK THIS SHEET TO BE PAID UNDER SCHEDULE B.
 2) ALL FLANGE FITTINGS SHALL HAVE ONE 32# SACRIFICIAL ANODE INSTALLED PER ASSEMBLY. SEE DETAIL 2 ON SHEET 7.

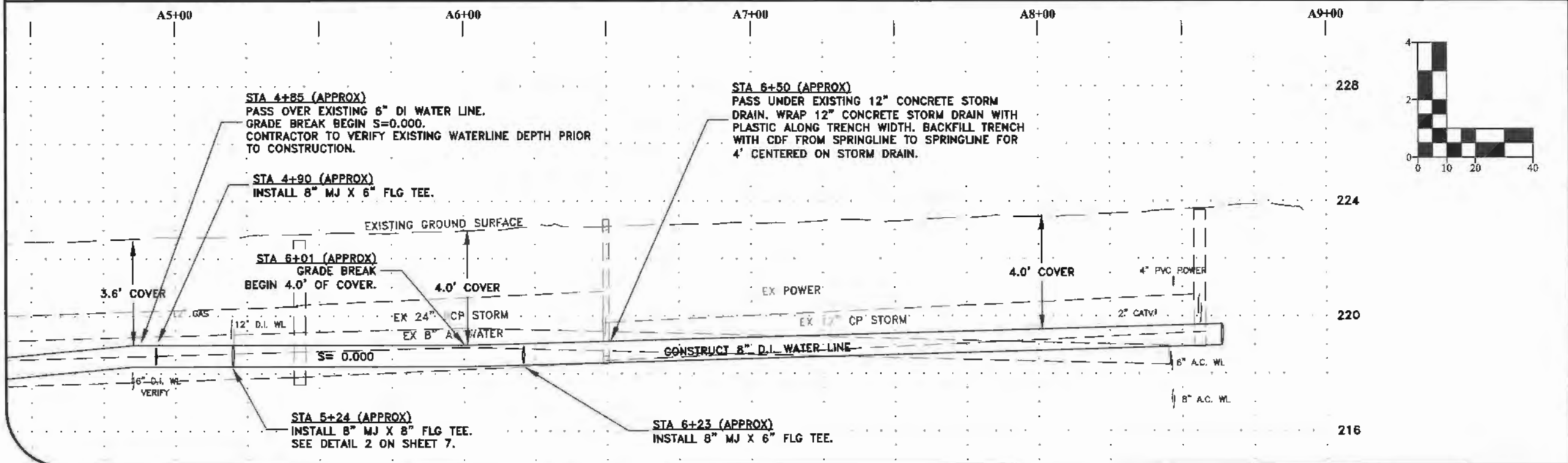


DESIGNED: L. SCHUMACHER	REVISIONS:
DRAWN: A. MONACO	NO: ---
CHECKED: L. SCHUMACHER	BY: ---
DATE: 3/17/2021	DATE: ---

PUBLIC WORKS DEPARTMENT
 ENGINEERING SERVICES



ST-21-02, DAVIDSON STREET REHABILITATION: 14TH TO 16TH AVE
 WATER LINE CONSTRUCTION



STA 4+85 (APPROX)
 PASS OVER EXISTING 6" DI WATER LINE.
 GRADE BREAK BEGIN S=0.000.
 CONTRACTOR TO VERIFY EXISTING WATERLINE DEPTH PRIOR TO CONSTRUCTION.

STA 4+90 (APPROX)
 INSTALL 8" MJ X 6" FLG TEE.

STA 6+01 (APPROX)
 GRADE BREAK BEGIN 4.0' OF COVER.

STA 6+50 (APPROX)
 PASS UNDER EXISTING 12" CONCRETE STORM DRAIN. WRAP 12" CONCRETE STORM DRAIN WITH PLASTIC ALONG TRENCH WIDTH. BACKFILL TRENCH WITH CDF FROM SPRINGLINE TO SPRINGLINE FOR 4' CENTERED ON STORM DRAIN.

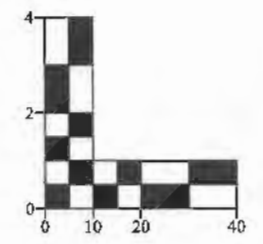
3.6' COVER

4.0' COVER

4.0' COVER

STA 5+24 (APPROX)
 INSTALL 8" MJ X 8" FLG TEE.
 SEE DETAIL 2 ON SHEET 7.

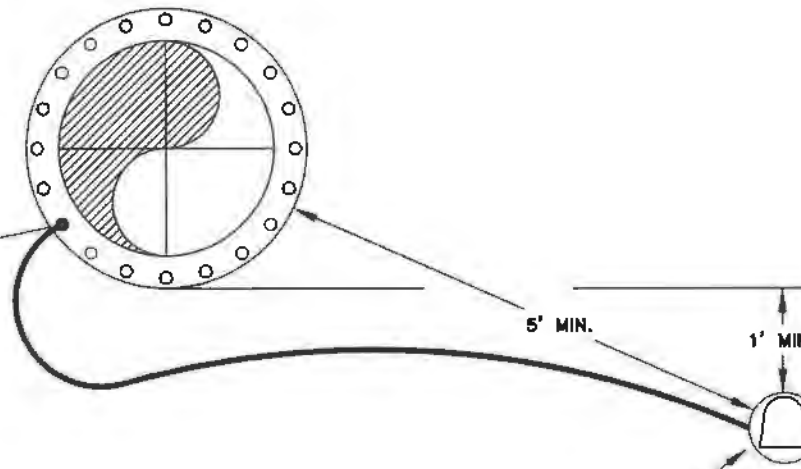
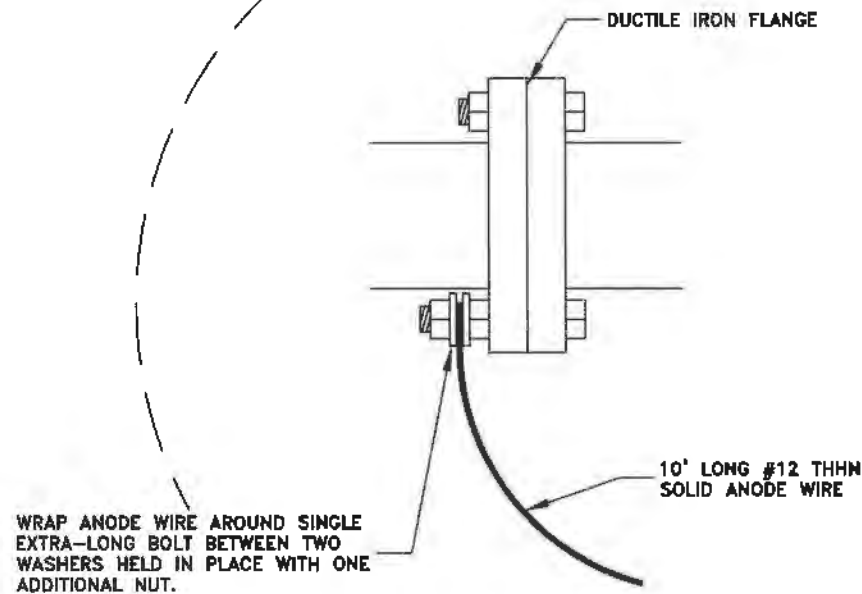
STA 6+23 (APPROX)
 INSTALL 8" MJ X 6" FLG TEE.



EXPIRES: 06/30/2022
 SHEET NO. 6 OF 10
 PROJECT NO: ST-21-02
 FILE: BASE.DWG

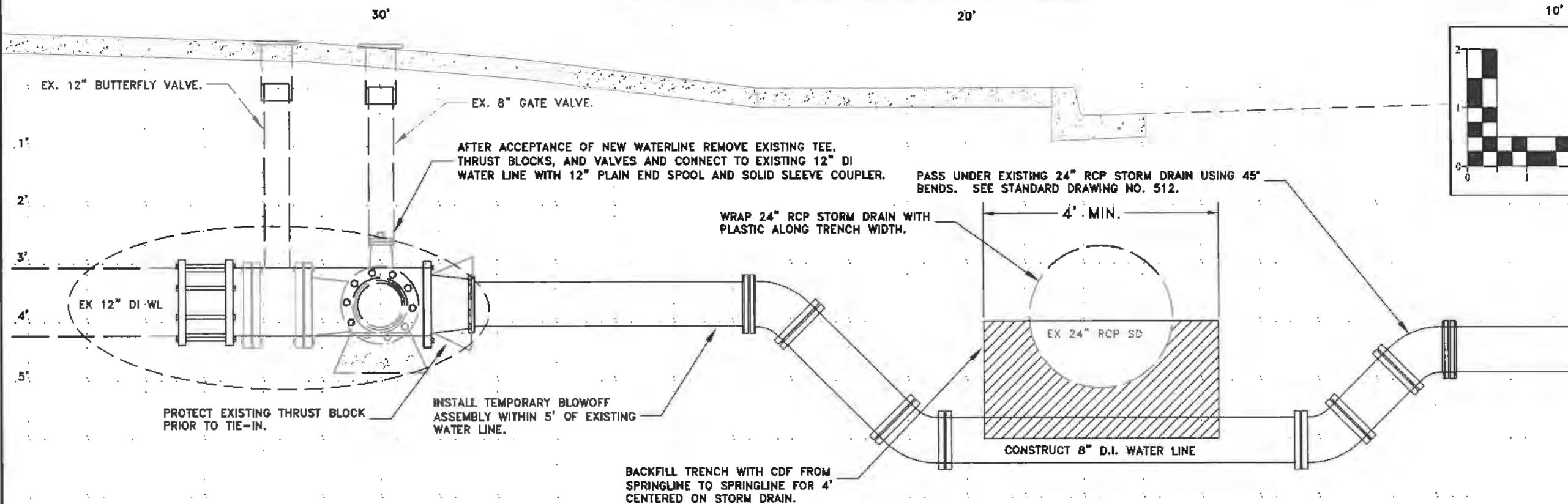
**DETAIL 1
DUCTILE IRON FLANGED FITTING
ANODE CONNECTION DETAIL**
NOT TO SCALE

ANODE WIRE CONNECTION DETAIL
NOT TO SCALE



- NOTES:**
1. LOCATE SACRIFICIAL ANODES A MINIMUM OF 5 FEET FROM PIPE AND OTHER ANODES
 2. PLACE ANODE IN CLEAN NATIVE BACKFILL AND COMPACT TO ONE FOOT ABOVE ANODE. FILL REMAINDER OF EXCAVATION WITH SELECT BACKFILL.

**DETAIL 2
STA 5+21 CONNECTION TO EXISTING 12" DI WATER LINE**

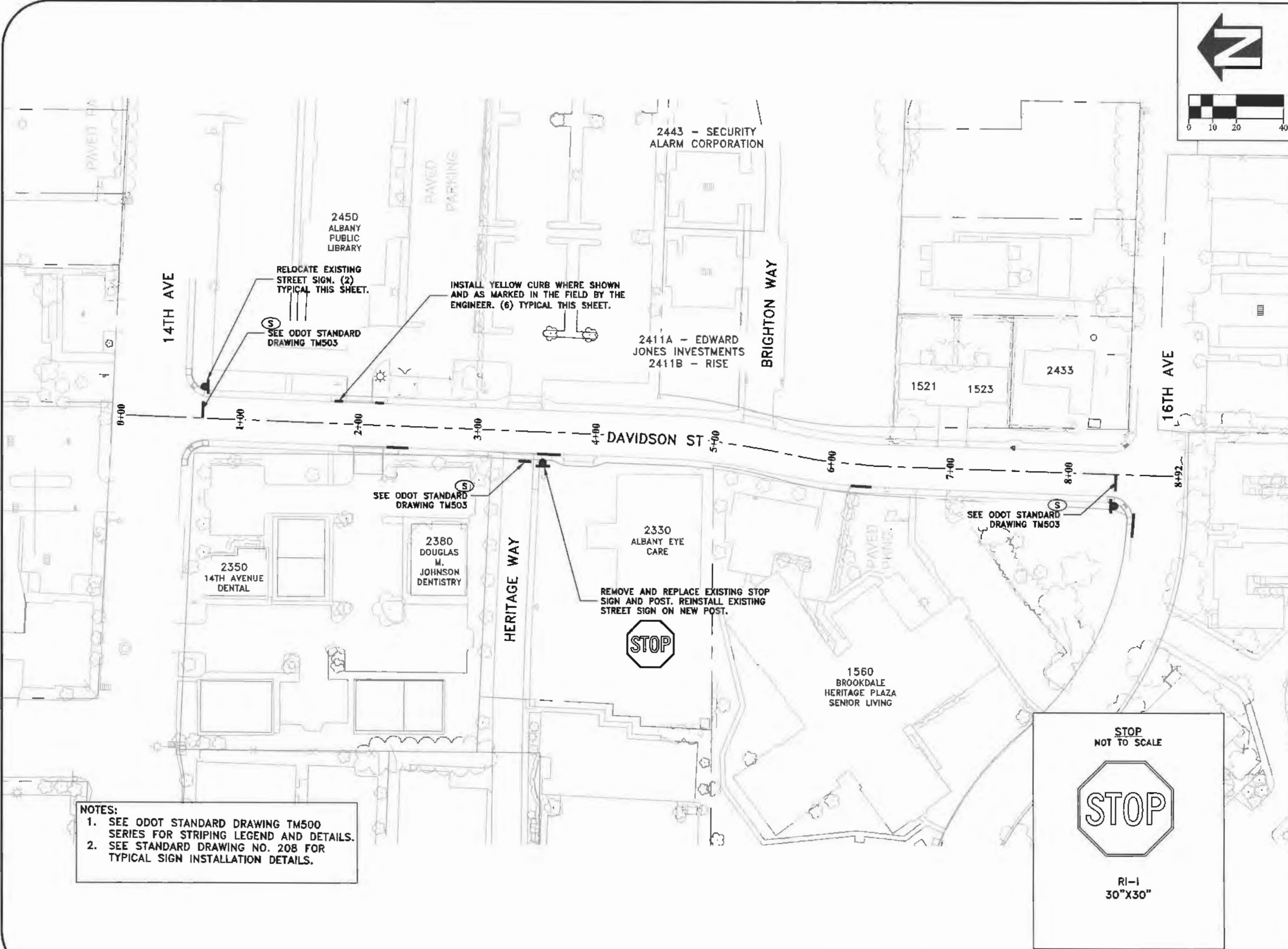


DESIGNED: L. SCHUMACHER	REVISIONS	NO:	BY:
DRAWN: A. MONACO			
CHECKED: L. SCHUMACHER			
DATE: 3/17/2021			

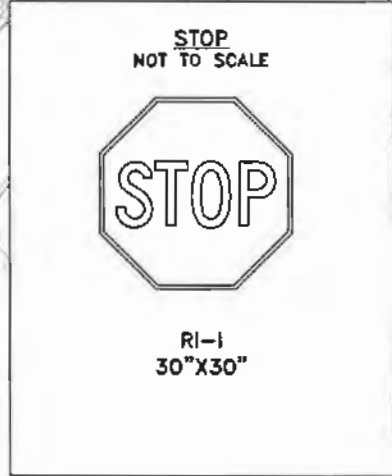
**PUBLIC WORKS DEPARTMENT
ENGINEERING SERVICES**

**ST-21-02, DAVIDSON STREET REHABILITATION; 14TH TO 16TH AVE
WATER LINE CONSTRUCTION DETAILS**





NOTES:
 1. SEE ODOT STANDARD DRAWING TM500 SERIES FOR STRIPING LEGEND AND DETAILS.
 2. SEE STANDARD DRAWING NO. 208 FOR TYPICAL SIGN INSTALLATION DETAILS.



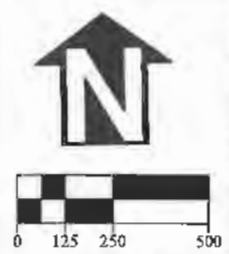
DESIGNED: L. SCHUMACHER	REVISIONS
DRAWN: A. MONACO	NO: --
CHECKED: L. SCHUMACHER	BY: --
DATE: 3/17/2021	DATE: --

**PUBLIC WORKS DEPARTMENT
ENGINEERING SERVICES**

**ST-21-02, DAVIDSON STREET REHABILITATION: 14TH TO 16TH AVE
PAVEMENT MARKINGS AND SIGNAGE**



SHEET NO. 8 OF 10
 PROJECT NO: ST-21-02
 FILE: BASE.DWG



DESIGNED: L. SCHUMACHER	REVISIONS
DRAWN: A. MONACO	NO: ---
CHECKED: L. SCHUMACHER	BY: ---
DATE: 3/17/2021	DATE: ---

DAVIDSON ST. CLOSED
14TH TO 16TH AVE
USE ALTERNATE ROUTE

BUSINESSES OPEN

A ROAD WORK AHEAD
W20-1
36"X36"

C ROAD CLOSED AHEAD
W20-3
36"X36"

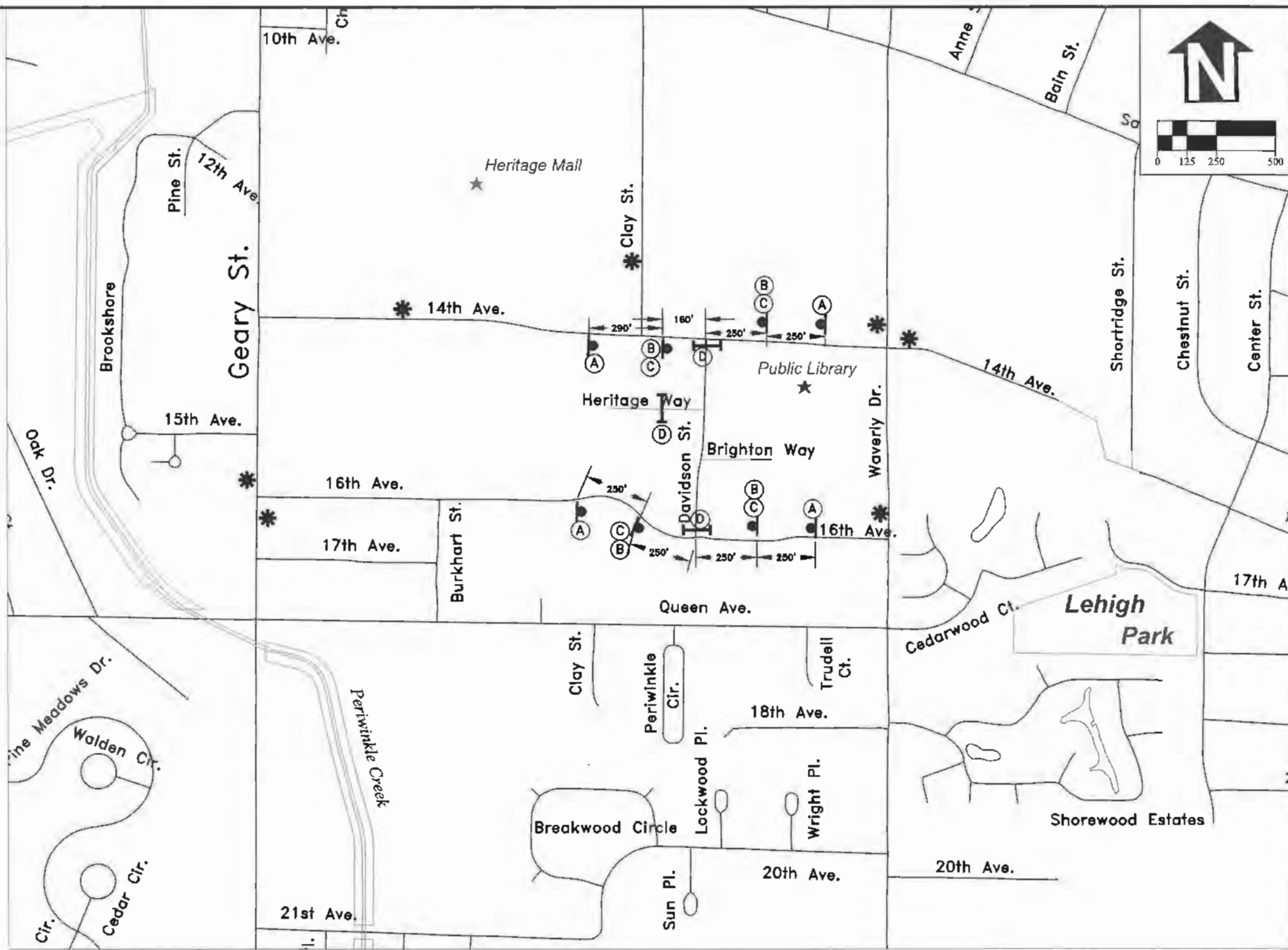
B Davidson St.
D3-1
48"X8"
BLACK LEGEND
ORANGE BACKGROUND
TYPE C OR D LETTERS

D ROAD CLOSED TO THRU TRAFFIC
R11-6
60"X30"

BUSINESSES OPEN

SIGN MOUNTED ON TEMPORARY POST

SIGN MOUNTED ON TYPE III BARRICADE



- NOTES:**
1. ALL SIGNS SHALL BE IN GOOD CONDITION AND SHALL HAVE REFLECTIVE SHEETING.
 2. ALL TYPE III BARRICADES SHALL BE FITTED WITH AT LEAST ONE FLASHING LIGHT.
 3. ALL SIGN POST LOCATIONS SHALL BE MARKED IN THE FIELD BY THE ENGINEER.
 4. CONTRACTOR SHALL MAINTAIN ACCESS TO DAVIDSON STREET AND BRIGHTON WAY BUSINESSES AND RESIDENTS DURING CONSTRUCTION.

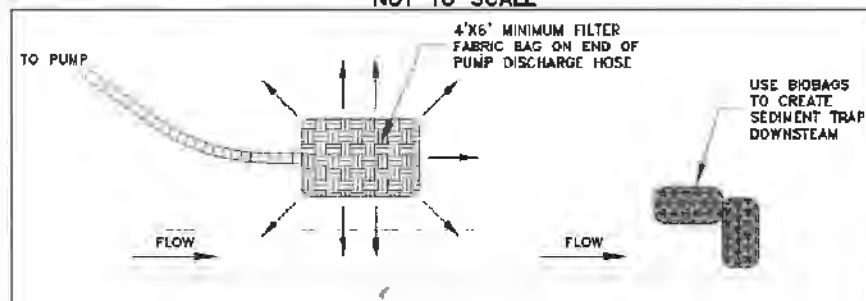
PUBLIC WORKS DEPARTMENT
ENGINEERING SERVICES

ST-21-02, DAVIDSON STREET REHABILITATION: 14TH TO 16TH AVE
TEMPORARY TRAFFIC CONTROL PLAN



DETAIL A: SAMPLE TRENCH DEWATERING METHOD

NOT TO SCALE



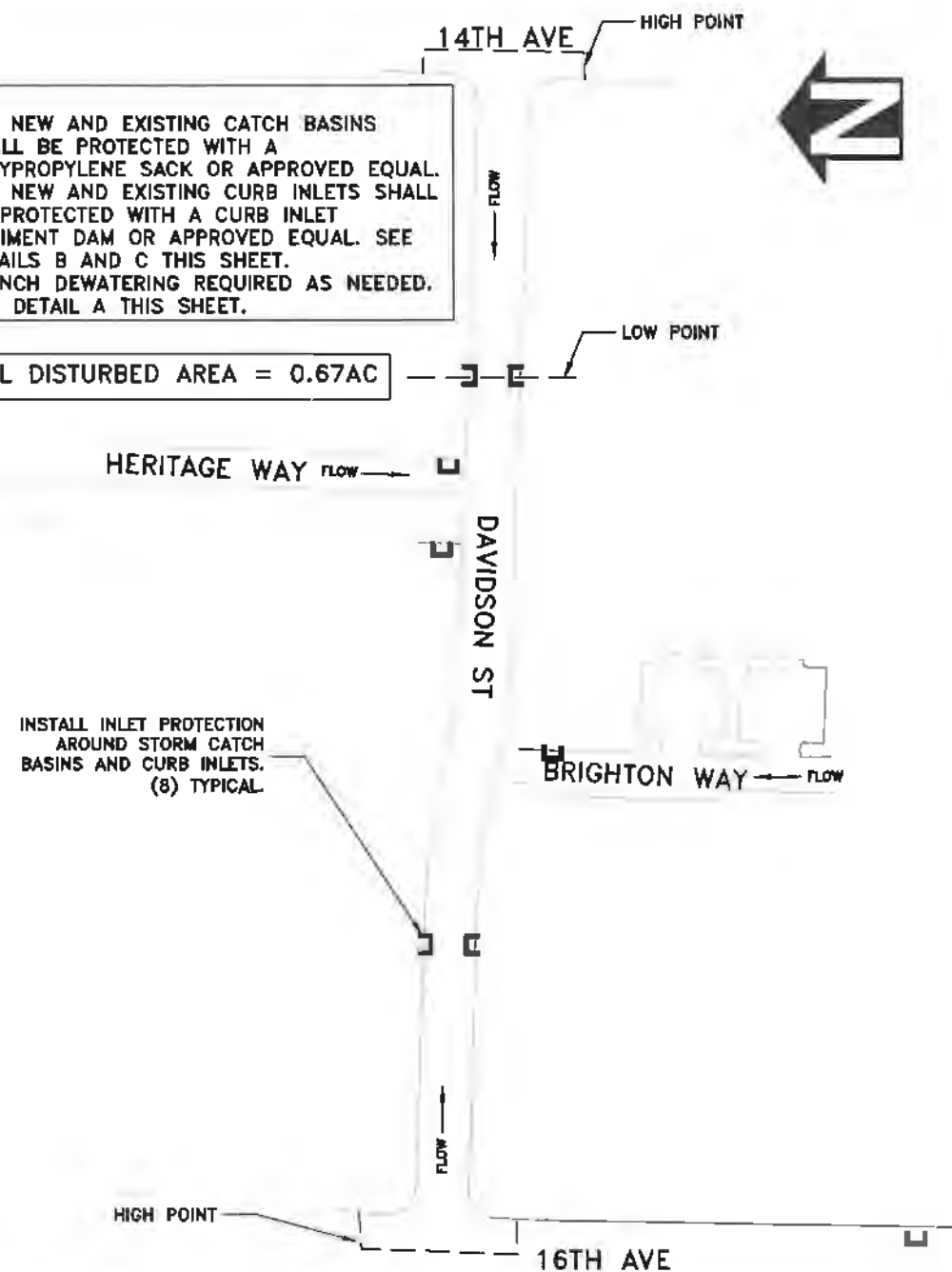
NOTES:

1. NON-COMPLIANCE MAY RESULT IN A STOP WORK ORDER AND/OR MONETARY PENALTIES. SEE SPECIAL PROVISIONS.
2. THIS DETAIL IS SHOWN AS A SAMPLE TRENCH DEWATERING METHOD. CONTRACTOR MAY PROPOSE ALTERNATIVE METHODS TO THE ENGINEER FOR APPROVAL.
3. FILTER FABRIC BAGS SHALL BE PROPERLY SIZED FOR DISCHARGE RATE AND SHALL BE REPLACED ONCE FULL OR PLUGGED.

NOTES:

1. ALL NEW AND EXISTING CATCH BASINS SHALL BE PROTECTED WITH A POLYPROPYLENE SACK OR APPROVED EQUAL.
2. ALL NEW AND EXISTING CURB INLETS SHALL BE PROTECTED WITH A CURB INLET SEDIMENT DAM OR APPROVED EQUAL. SEE DETAILS B AND C THIS SHEET.
3. TRENCH DEWATERING REQUIRED AS NEEDED. SEE DETAIL A THIS SHEET.

TOTAL DISTURBED AREA = 0.67AC

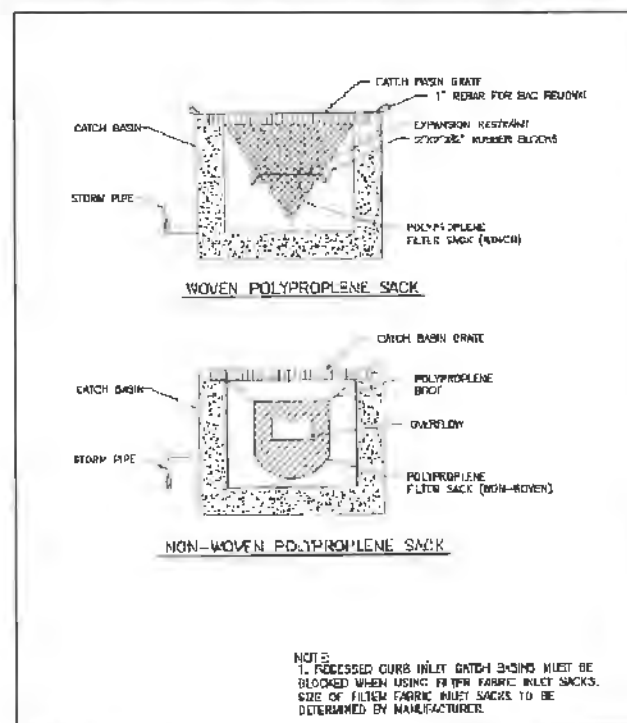


INSTALL INLET PROTECTION AROUND STORM CATCH BASINS AND CURB INLETS. (8) TYPICAL

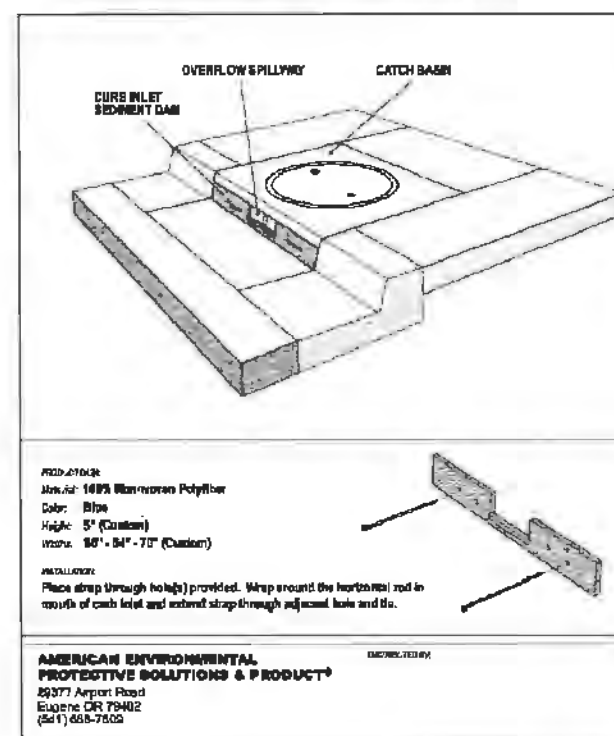
GENERAL EROSION & SEDIMENT CONTROL NOTES:

1. ALL CONSTRUCTION SHALL CONFORM TO THE CITY OF ALBANY EPSC MANUAL. THE CURRENT VERSION OF THE CITY OF ALBANY EPSC MANUAL CAN BE FOUND ON THE CITY'S WEBSITE AT WWW.CITYOFALBANY.NET.
2. EROSION AND SEDIMENT CONTROL MEASURES INCLUDING PERIMETER SEDIMENT CONTROL SHALL BE IN PLACE BEFORE EXISTING GROUND SURFACE IS DISTURBED AND SHALL REMAIN IN PLACE AND BE MAINTAINED, REPAIRED, AND PROMPTLY IMPLEMENTED FOLLOWING PROCEDURES ESTABLISHED FOR THE DURATION OF CONSTRUCTION, INCLUDING PROTECTION FOR ACTIVE STORM DRAIN INLETS AND CATCH BASINS AND APPROPRIATE NON-STORMWATER POLLUTION CONTROLS.
3. SWEEP ALL CONCRETE GUTTERS AND VACUUM SWEEP UNDISTURBED PAVEMENT WITHIN PROJECT LIMITS AND ALL SIDE STREETS WITH CONSTRUCTION TRAFFIC AT THE END OF EACH WORKING DAY WHEN GROUND DISTURBING ACTIVITIES ARE TAKING PLACE AND AS DIRECTED BY THE ENGINEER.
4. THE CONTRACTOR SHALL PROPERLY MANAGE HAZARDOUS WASTES, USED OILS, CONTAMINATED SOILS, CONCRETE WASTE, SANITARY WASTE, LIQUID WASTE, OR OTHER TOXIC SUBSTANCES DISCOVERED OR GENERATED DURING CONSTRUCTION AND MEET ALL STATE AND FEDERAL REGULATIONS AND APPROVALS.
5. THE EPSC MEASURES SHOWN ON THIS PLAN ARE MINIMUM REQUIREMENTS FOR ANTICIPATED SITE CONDITIONS. DURING THE CONSTRUCTION PERIOD, THESE MEASURES MUST BE UPGRADED AS NEEDED TO COMPLY WITH ALL APPLICABLE LOCAL, STATE, AND FEDERAL EROSION AND SEDIMENT CONTROL REGULATIONS. CHANGES TO THE EPSC MUST ALSO BE SUBMITTED TO THE ENGINEER FOR APPROVAL.
6. SAWCUT SLURRY SHALL BE VACUUMED AND CLEANED FROM THE STREET SURFACE AT THE TIME SAWCUTTING IS PERFORMED.
7. SEDIMENT MUST BE REMOVED FROM IN FRONT OF SEDIMENT DAMS AND OTHER BARRIERS WHEN IT HAS REACHED A HEIGHT 2-INCHES AND BEFORE BMP REMOVAL.
8. VACUUMING OR DRY SWEEPING SHALL BE USED TO CLEAN UP RELEASED SEDIMENT.
9. SEDIMENTS AND OTHER POLLUTANTS ARE PROHIBITED FROM ENTERING THE STORM DRAIN SYSTEM.
10. A MINIMUM OF ONE CONCRETE WASHOUT STATION SHALL BE REQUIRED WHEN CONCRETE WORK IS TAKING PLACE. CONTRACTOR SHALL SUBMIT CONCRETE WASHOUT STATION PLAN TO ENGINEER FOR REVIEW AND APPROVAL PRIOR TO STARTING WORK.
11. CONTRACTOR SHALL WATER SITE AS NEEDED AND AS DIRECTED BY THE ENGINEER TO CONTROL DUST CREATED BY CONSTRUCTION ACTIVITIES.

DETAIL B: CATCH BASIN POLYPROPYLENE SACK



DETAIL C: CURB INLET SEDIMENT DAM



DESIGNED: L. SCHUMACHER
 DRAWN: A. MONACO
 CHECKED: L. SCHUMACHER
 DATE: 3/17/2021

REVISIONS
 NO: BY: DATE:

PUBLIC WORKS DEPARTMENT
 ENGINEERING SERVICES



ST-21-02, DAVIDSON STREET REHABILITATION; 14TH TO 16TH AVE
 EROSION PREVENTION AND SEDIMENT CONTROL



EXPIRES: 06/30/2022
 SHEET NO. 10 OF 10
 PROJECT NO: ST-21-D2
 FILE: BASE.DWG