

CITY OF ALBANY

WL-18-02, PINE MEADOWS WATER LINE REPLACEMENT

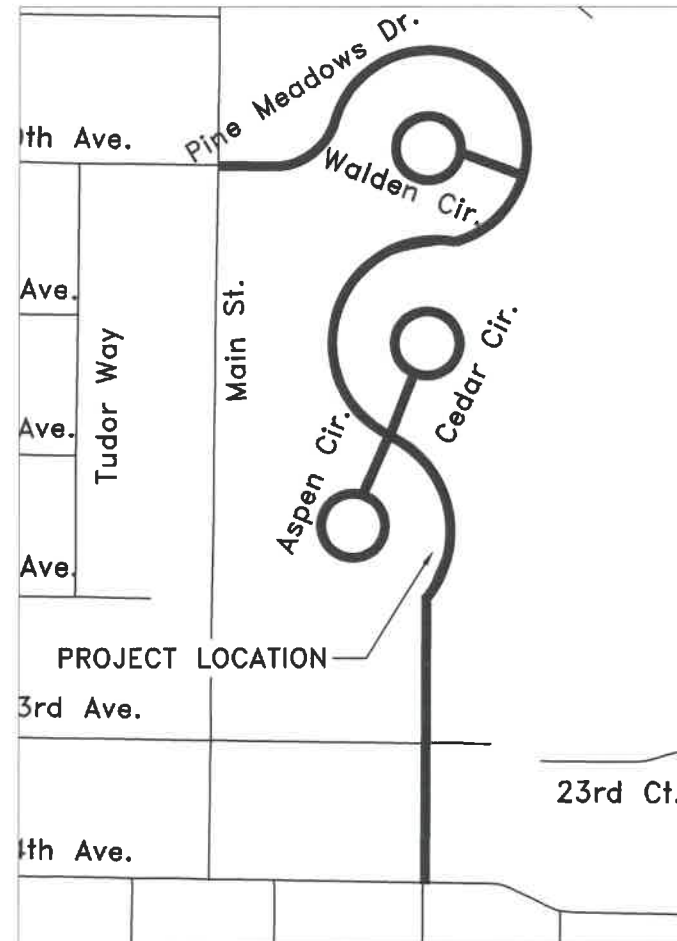
SHEET INDEX	
SHEET NUMBER	SHEET TITLE
1	COVER
2	PINE MEADOW DR STA 0+00 TO 4+50
3	PINE MEADOW DR STA 4+50 TO 10+00
4	PINE MEADOW DR STA 10+00 TO 15+50
5	PINE MEADOW DR STA 15+50 TO 20+25 AND CEDAR CIRCLE
6	PINE MEADOW DR STA 20+25 TO 24+25 AND ASPEN CIRCLE
7	PINE MEADOW DR STA 24+25 TO END
8	WATER CONNECTION DETAILS
9	DRIVEWAY REPAIR DETAIL
10	PAVING STA 0+00 TO 16+80
11	PAVING STA 16+80 TO END

LEGEND:

- NEW HDPE WATER LINE

- RECONNECT EXISTING WATER METER
- REPLACE EXISTING WATER METER WITH NEW METER
- RECONNECT EXISTING CLUSTER OF 4 WATER METERS. EACH METER SHALL BE CONSTRUCTED WITH INDIVIDUAL SERVICE LINE. SEE DRIVEWAY REPAIR DETAIL ON SHEET 9

- ADDRESSES WITH A 'M' NEXT TO THEM SHALL HAVE THE METER REPLACED WITH A CITY PROVIDED METER



Vicinity Map
Not to Scale

DESIGNED: N. NELSON	REVISIONS
DRAWN: N. NELSON	NO: BY:
CHECKED: S. BELCASTRO	DATE:
DATE: 6/29/2018	

PUBLIC WORKS DEPARTMENT
ENGINEERING SERVICES



WL-18-02, PINE MEADOWS WATER LINE REPLACEMENT

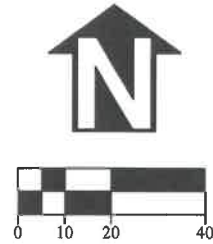
GENERAL NOTES

1. ALL CONSTRUCTION SHALL CONFORM TO THE CITY OF ALBANY STANDARD CONSTRUCTION SPECIFICATIONS AND ASSOCIATED STANDARD DRAWINGS. THE CURRENT VERSION OF THE CITY OF ALBANY STANDARD CONSTRUCTION SPECIFICATIONS CAN BE FOUND ON THE CITY'S WEBSITE AT WWW.CITYOFALBANY.NET.
2. UTILITIES SHOWN ARE FOR REFERENCE ONLY. FOR A FIELD LOCATE, CALL THE UTILITIES NOTIFICATIONS CENTER AT 1-800-332-2344.
3. OPERATING ACCESS FOR CITY MAINTENANCE PERSONNEL TO EXISTING AND NEW WATER VALVES AND MANHOLES SHALL BE CONTINUOUSLY MAINTAINED BY THE CONTRACTOR DURING ALL CONSTRUCTION ACTIVITIES.
4. CONTRACTOR SHALL VERIFY ALL EXISTING PIPE ELEVATIONS, PIPE DIAMETERS, AND PIPE MATERIALS AT CONNECTION AND ABANDONMENT LOCATIONS PRIOR TO CONSTRUCTION. ANY DISCREPANCIES SHALL BE REPORTED TO ENGINEER PRIOR TO BEGINNING WORK.
5. ATTENTION: OREGON LAW REQUIRES YOU TO FOLLOW RULES ADOPTED BY THE OREGON UTILITY NOTIFICATION CENTER. THOSE RULES ARE SET FORTH IN OAR 952-001-0010 THROUGH OAR 952-001-0090. YOU MAY OBTAIN COPIES OF THE RULES BY CALLING THE CENTER. (NOTE: THE TELEPHONE NUMBER FOR THE OREGON UTILITY NOTIFICATION CENTER IS 1-800-332-2344).
6. CONTRACTOR SHALL BE RESPONSIBLE FOR PROPER INSTALLATION AND MAINTENANCE OF ALL EROSION PREVENTION SEDIMENT CONTROL (EPSC) MEASURES IN ACCORDANCE WITH LOCAL, STATE, AND FEDERAL REGULATIONS UNTIL ALL CONSTRUCTION IS COMPLETED AND APPROVED BY THE CITY OF ALBANY, AND VEGETATION/LANDSCAPING IS ESTABLISHED. FOR GUIDANCE, REFER TO THE CITY OF ALBANY EPSC MANUAL WHICH CAN BE FOUND AT www.cityofalbany.net.



EXPIRATION DATE: 12/31/2018

SHEET NO. 1 OF 11
PROJECT NO: WL-18-02
FILE: FILENAME.DWG



CONSTRUCT STANDARD 2" SERVICE ASSEMBLY. SEE STANDARD DRAWING NO. 507 LOCATION TO BE SPECIFIED IN THE FIELD BY THE ENGINEER

CONSTRUCT STANDARD 2" SERVICE ASSEMBLY. SEE STANDARD DRAWING NO. 507 LOCATION TO BE SPECIFIED IN THE FIELD BY THE ENGINEER

STA. 4+35
 INSTALL 8"x6" HDPE TEE
 INSTALL 6" MJ GATE VALVE WITH MJ ADAPTERS (W)
 INSTALL FIRE HYDRANT ASSEMBLY SEE STANDARD DRAWING NO. 504
 INSTAL 8" MJ GATE VALVE WITH MJ ADAPTERS (NE)


CONSTRUCT STANDARD 1" SERVICE ASSEMBLY. SEE STANDARD DRAWING NO. 507 LOCATION TO BE SPECIFIED IN THE FIELD BY THE ENGINEER (17) TYPICAL THIS SHEET

STA 0+00 CONNECTION SEE DETAIL 1 ON SHEET 8
 PINE MEADOW DRIVE
 MAIN STREET
 STA 0+00 BEGIN OVERLAY

Replaced by Addendum No. 1

DESIGNED: N. NELSON	REVISIONS
DRAWN: N. NELSON	NO: -- BY: --
CHECKED: S. BELCASTRO	DATE: -- --
DATE: 6/29/2018	

PUBLIC WORKS DEPARTMENT
ENGINEERING SERVICES

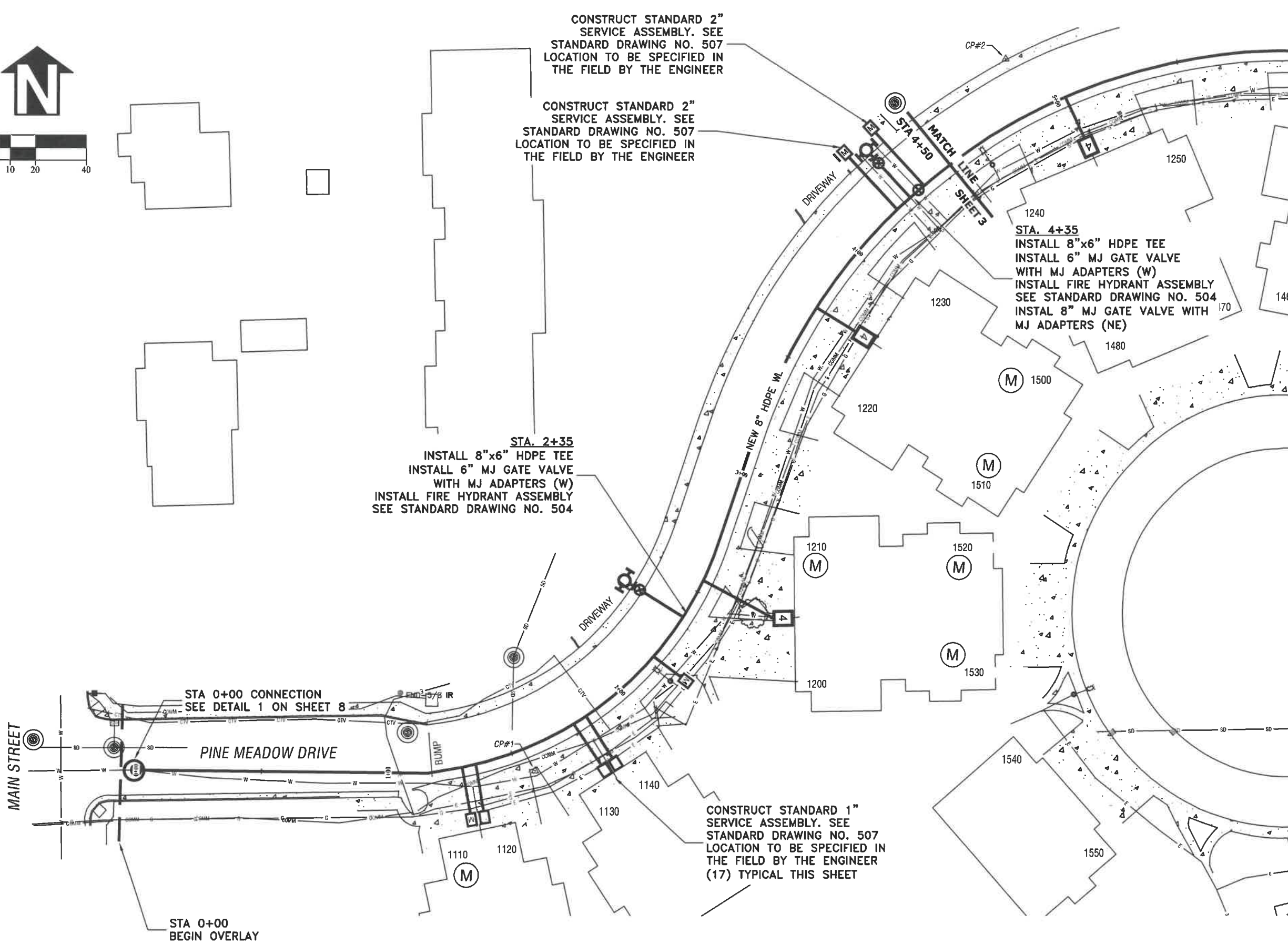
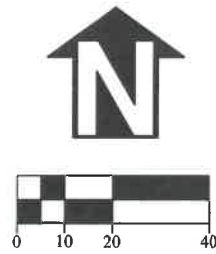


WL-18-02, PINE MEADOWS WATER LINE REPLACEMENT
 PINE MEADOW DR STA 0+00 TO 4+50

REGISTERED PROFESSIONAL
 ENGINEER
 82577PE
Nolan J. Nelson
 OREGON
 JUNE 29, 2009
 NOLAN J. NELSON

EXPIRATION DATE: 12/31/2018

SHEET NO. 2 OF 11
 PROJECT NO: WL-18-02
 FILE: BASE.DWG



CONSTRUCT STANDARD 2"
SERVICE ASSEMBLY. SEE
STANDARD DRAWING NO. 507
LOCATION TO BE SPECIFIED IN
THE FIELD BY THE ENGINEER

CONSTRUCT STANDARD 2"
SERVICE ASSEMBLY. SEE
STANDARD DRAWING NO. 507
LOCATION TO BE SPECIFIED IN
THE FIELD BY THE ENGINEER

STA. 2+35
INSTALL 8"x6" HDPE TEE
INSTALL 6" MJ GATE VALVE
WITH MJ ADAPTERS (W)
INSTALL FIRE HYDRANT ASSEMBLY
SEE STANDARD DRAWING NO. 504

STA. 4+35
INSTALL 8"x6" HDPE TEE
INSTALL 6" MJ GATE VALVE
WITH MJ ADAPTERS (W)
INSTALL FIRE HYDRANT ASSEMBLY
SEE STANDARD DRAWING NO. 504
INSTALL 8" MJ GATE VALVE WITH
MJ ADAPTERS (NE)

CONSTRUCT STANDARD 1"
SERVICE ASSEMBLY. SEE
STANDARD DRAWING NO. 507
LOCATION TO BE SPECIFIED IN
THE FIELD BY THE ENGINEER
(17) TYPICAL THIS SHEET

STA 0+00 CONNECTION
SEE DETAIL 1 ON SHEET 8

STA 0+00
BEGIN OVERLAY

DESIGNED: N. NELSON	REVISIONS
DRAWN: N. NELSON	NO: 1
CHECKED: S. BELCASTRO	DATE: 7/13/18
DATE: 6/29/2018	BY: N/N

PUBLIC WORKS DEPARTMENT
ENGINEERING SERVICES

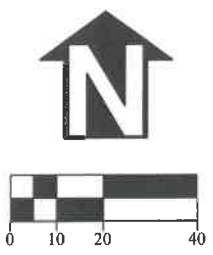
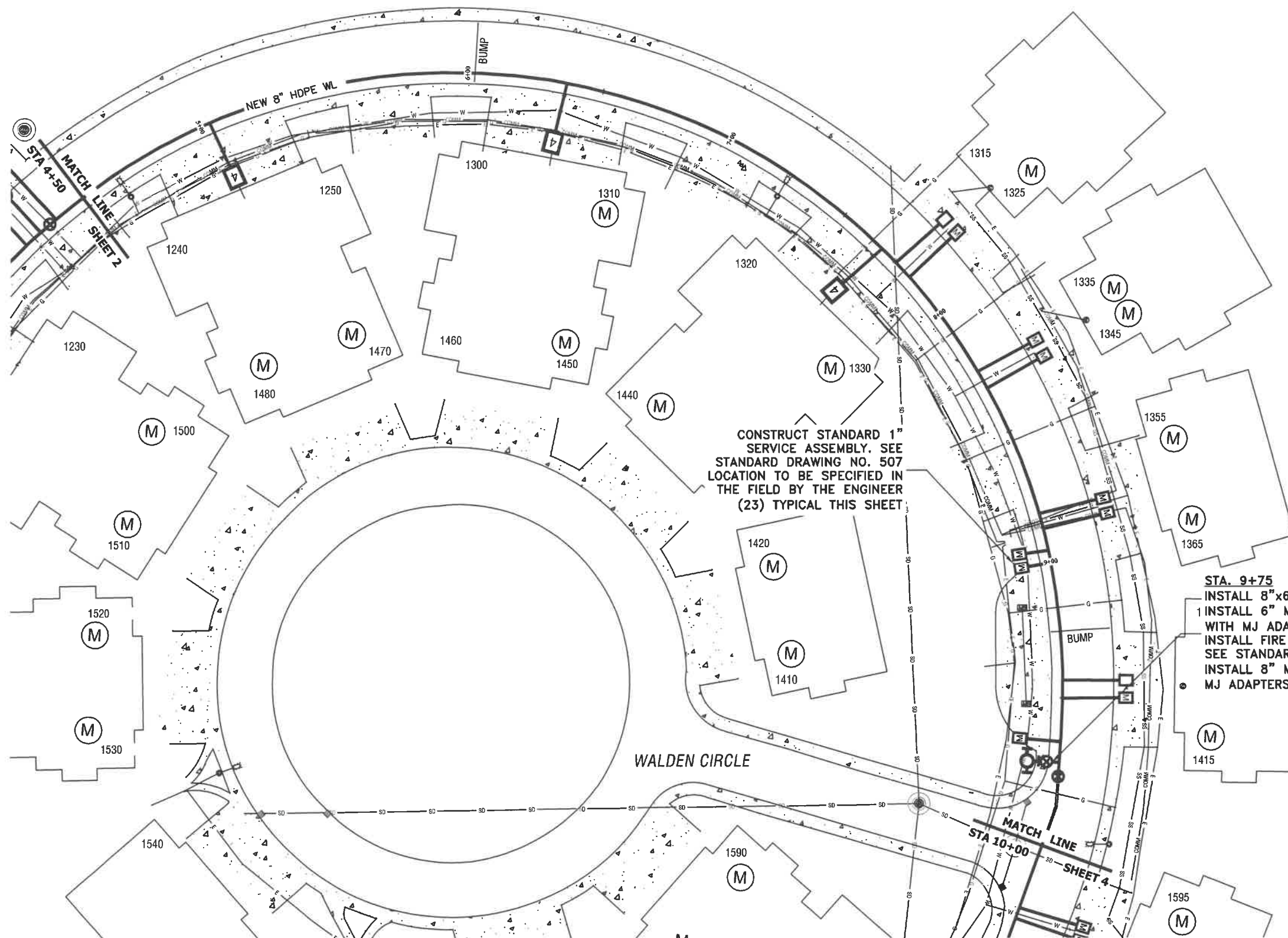


WL-18-02, PINE MEADOWS WATER LINE REPLACEMENT
PINE MEADOW DR STA 0+00 TO 4+50



EXPIRATION DATE: 12/31/2018

SHEET NO.	2 OF 11
PROJECT NO:	WL-18-02
FILE:	BASE.DWG



CONSTRUCT STANDARD 1" SERVICE ASSEMBLY. SEE STANDARD DRAWING NO. 507 LOCATION TO BE SPECIFIED IN THE FIELD BY THE ENGINEER (23) TYPICAL THIS SHEET

STA. 9+75
 INSTALL 8"x6" HDPE TEE
 1 INSTALL 6" MJ GATE VALVE WITH MJ ADAPTERS (W)
 INSTALL FIRE HYDRANT ASSEMBLY SEE STANDARD DRAWING NO. 504
 INSTALL 8" MJ GATE VALVE WITH MJ ADAPTERS (S)

DESIGNED: N. NELSON	REVISIONS
DRAWN: N. NELSON	NO: ---
CHECKED: S. BELCASTRO	BY: ---
DATE: 6/29/2018	DATE: ---

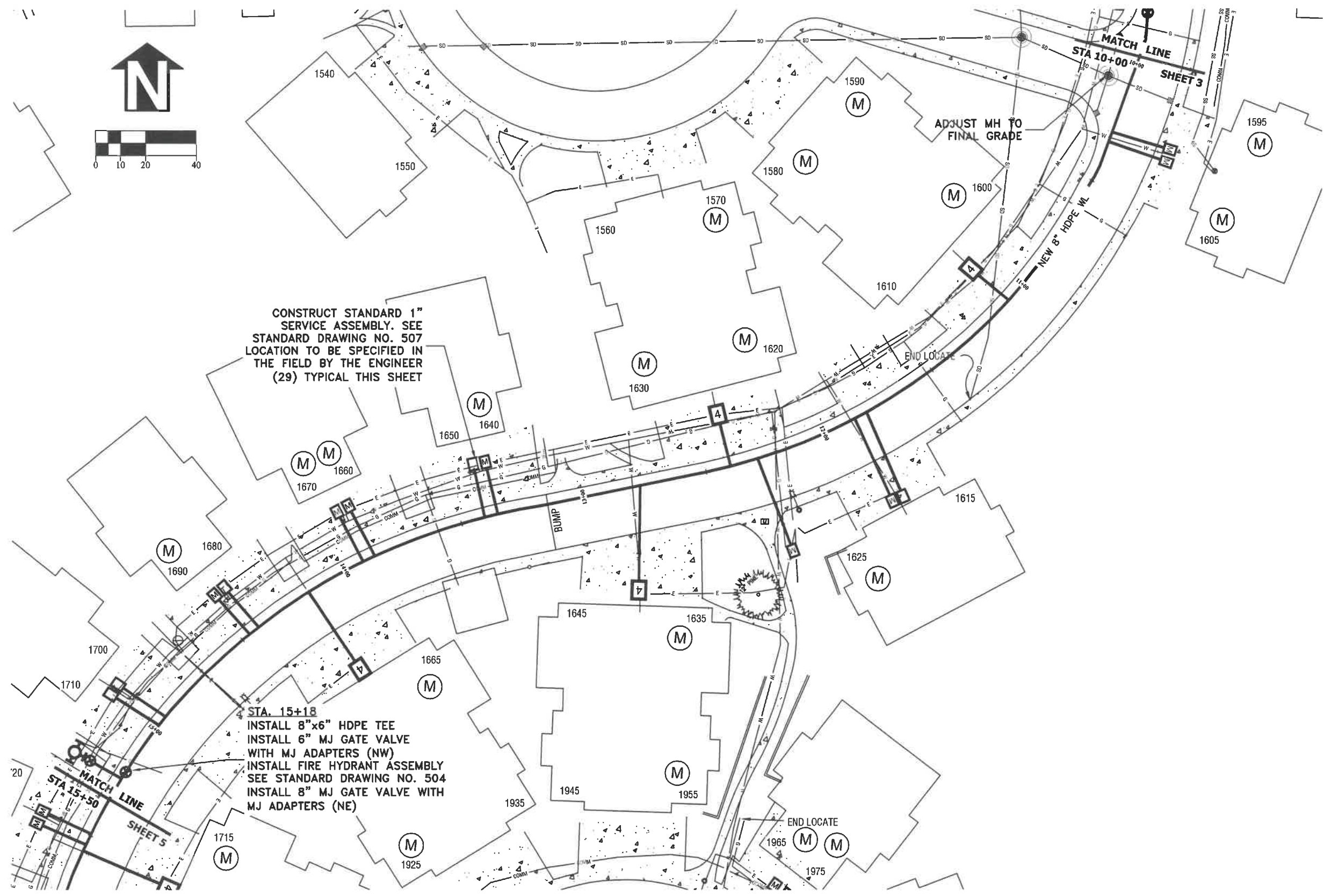
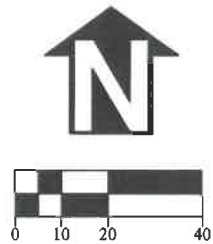
PUBLIC WORKS DEPARTMENT
ENGINEERING SERVICES

WL-18-02, PINE MEADOWS WATER LINE REPLACEMENT
 PINE MEADOW DR STA 4+50 TO 10+00



EXPIRATION DATE: 12/31/2018

SHEET NO. 3 OF 11
 PROJECT NO: WL-18-02
 FILE: BASE.DWG



CONSTRUCT STANDARD 1" SERVICE ASSEMBLY. SEE STANDARD DRAWING NO. 507 LOCATION TO BE SPECIFIED IN THE FIELD BY THE ENGINEER (29) TYPICAL THIS SHEET

STA. 15+18
 INSTALL 8"x6" HDPE TEE
 INSTALL 6" MJ GATE VALVE WITH MJ ADAPTERS (NW)
 INSTALL FIRE HYDRANT ASSEMBLY SEE STANDARD DRAWING NO. 504
 INSTALL 8" MJ GATE VALVE WITH MJ ADAPTERS (NE)

ADJUST MH TO FINAL GRADE

NEW 8" HDPE WL

END LOCATE

END LOCATE

MATCH LINE

SHEET 3

MATCH LINE

SHEET 5

DESIGNED: N. NELSON	REVISIONS
DRAWN: N. NELSON	NO: ---
CHECKED: S. BELCASTRO	BY: ---
DATE: 6/29/2018	DATE: ---

PUBLIC WORKS DEPARTMENT
ENGINEERING SERVICES

WL-18-02, PINE MEADOWS WATER LINE REPLACEMENT
 PINE MEADOW DR STA 10+00 TO 15+50

REGISTERED PROFESSIONAL
 ENGINEER
 82577PE
Nolan J. Nelson
 OREGON
 JUNE 29, 2009
 NOLAN J. NELSON

EXPIRATION DATE: 12/31/2018

SHEET NO. 4 OF 11

PROJECT NO: WL-18-02

FILE: BASE.DWG

DESIGNED: N. NELSON	REVISIONS
DRAWN: N. NELSON	NO: --
CHECKED: S. BELCASTRO	BY: --
DATE: 6/29/2018	DATE: --

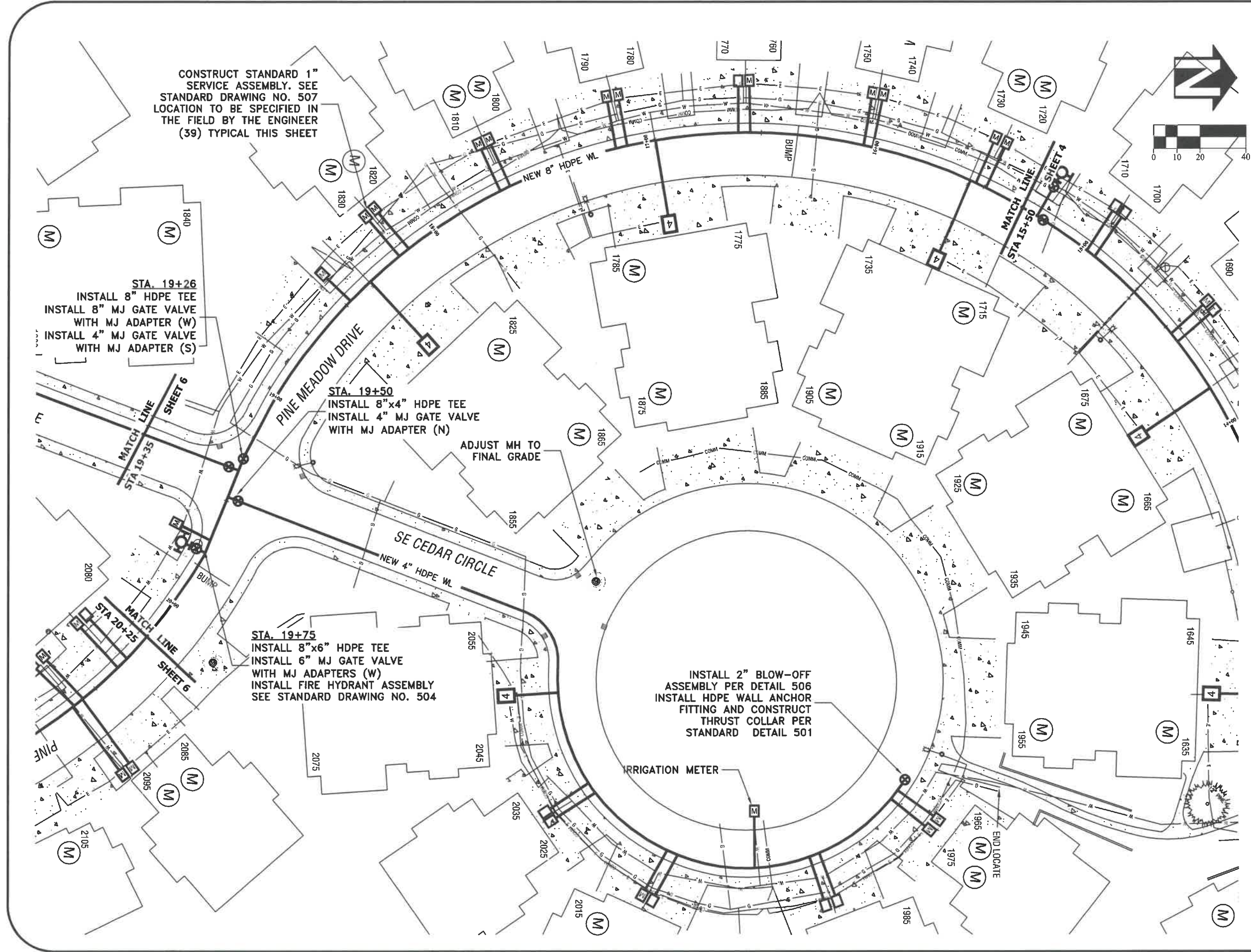
PUBLIC WORKS DEPARTMENT
ENGINEERING SERVICES

WL-18-02, PINE MEADOWS WATER LINE REPLACEMENT
PINE MEADOW DR STA 15+50 TO 20+25 AND CEDAR CIRCLE



EXPIRATION DATE: 12/31/2018

SHEET NO. 5 OF 11
PROJECT NO: WL-18-02
FILE: BASE.DWG



CONSTRUCT STANDARD 1" SERVICE ASSEMBLY. SEE STANDARD DRAWING NO. 507 LOCATION TO BE SPECIFIED IN THE FIELD BY THE ENGINEER (39) TYPICAL THIS SHEET

STA. 19+26
INSTALL 8" HDPE TEE
INSTALL 8" MJ GATE VALVE WITH MJ ADAPTER (W)
INSTALL 4" MJ GATE VALVE WITH MJ ADAPTER (S)

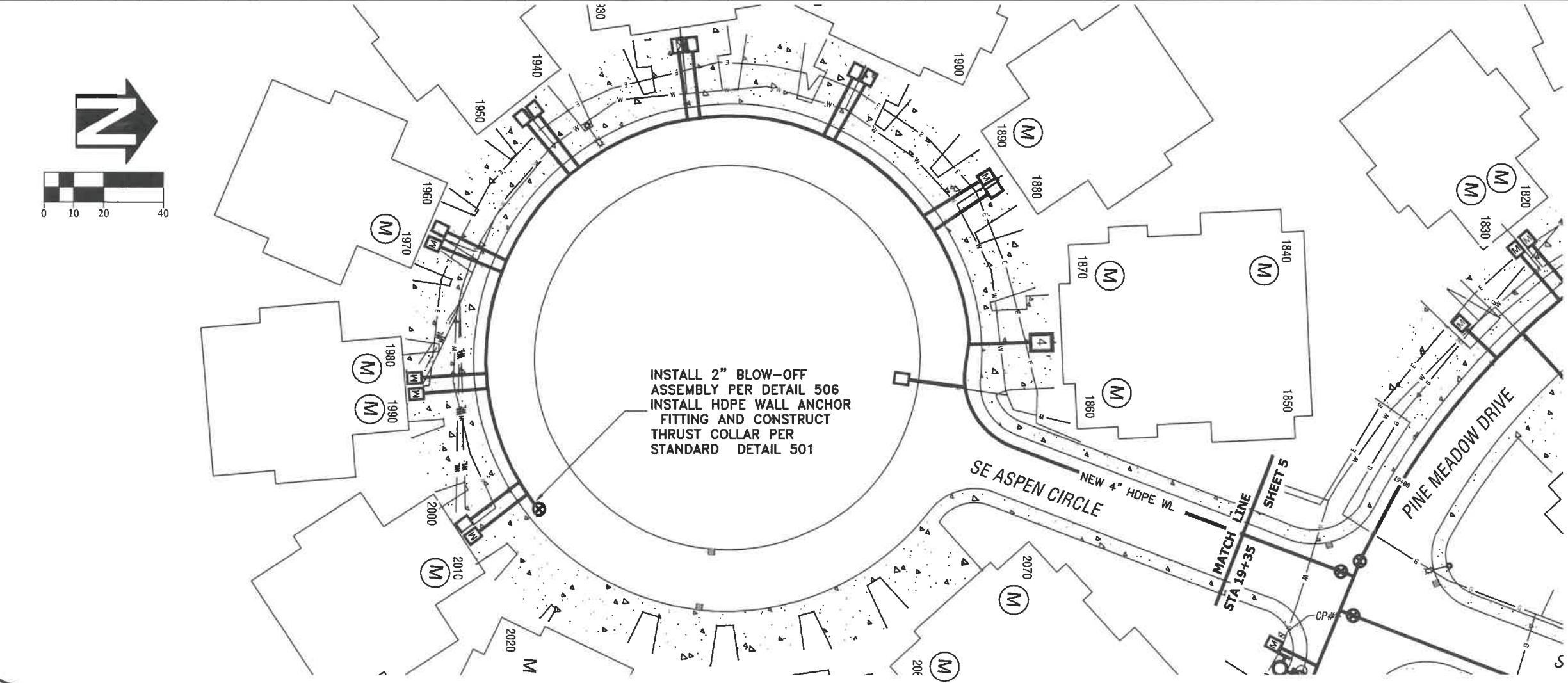
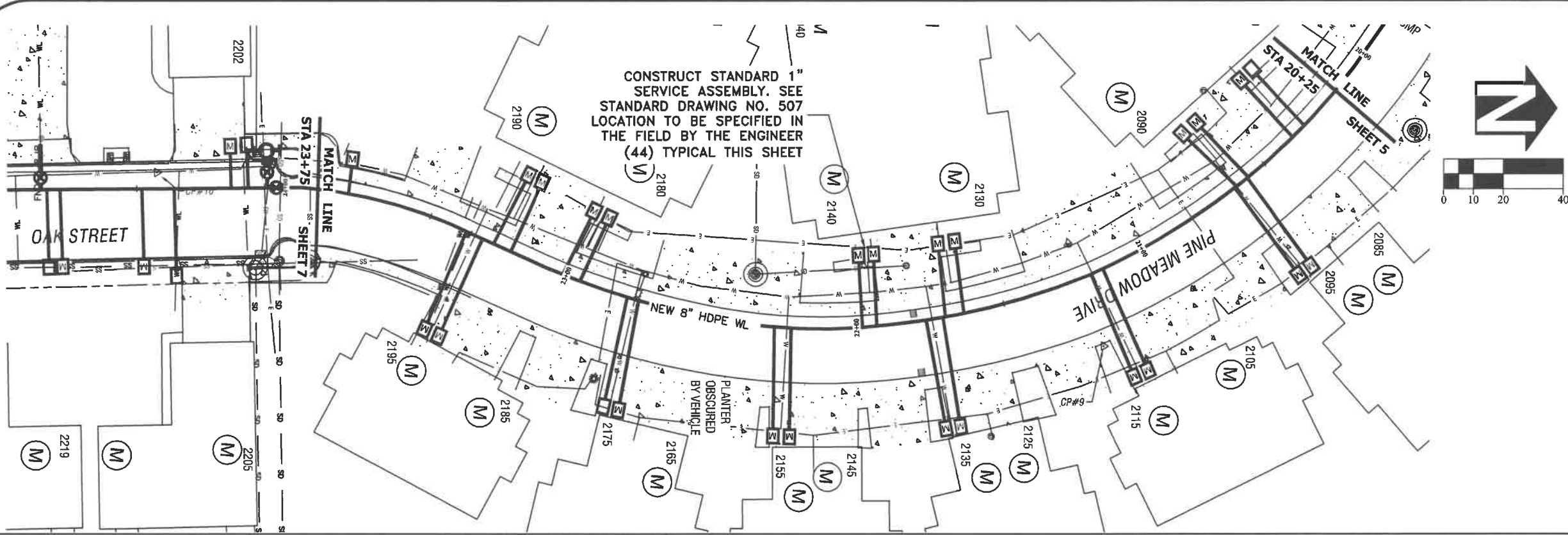
STA. 19+50
INSTALL 8"x4" HDPE TEE
INSTALL 4" MJ GATE VALVE WITH MJ ADAPTER (N)

STA. 19+75
INSTALL 8"x6" HDPE TEE
INSTALL 6" MJ GATE VALVE WITH MJ ADAPTERS (W)
INSTALL FIRE HYDRANT ASSEMBLY SEE STANDARD DRAWING NO. 504

INSTALL 2" BLOW-OFF ASSEMBLY PER DETAIL 506
INSTALL HDPE WALL ANCHOR FITTING AND CONSTRUCT THRUST COLLAR PER STANDARD DETAIL 501

ADJUST MH TO FINAL GRADE

END LOCATE



DESIGNED: N. NELSON
 DRAWN: N. NELSON
 CHECKED: S. BELCASTRO
 DATE: 6/29/2018

REVISIONS	
NO.	BY:

PUBLIC WORKS DEPARTMENT
ENGINEERING SERVICES

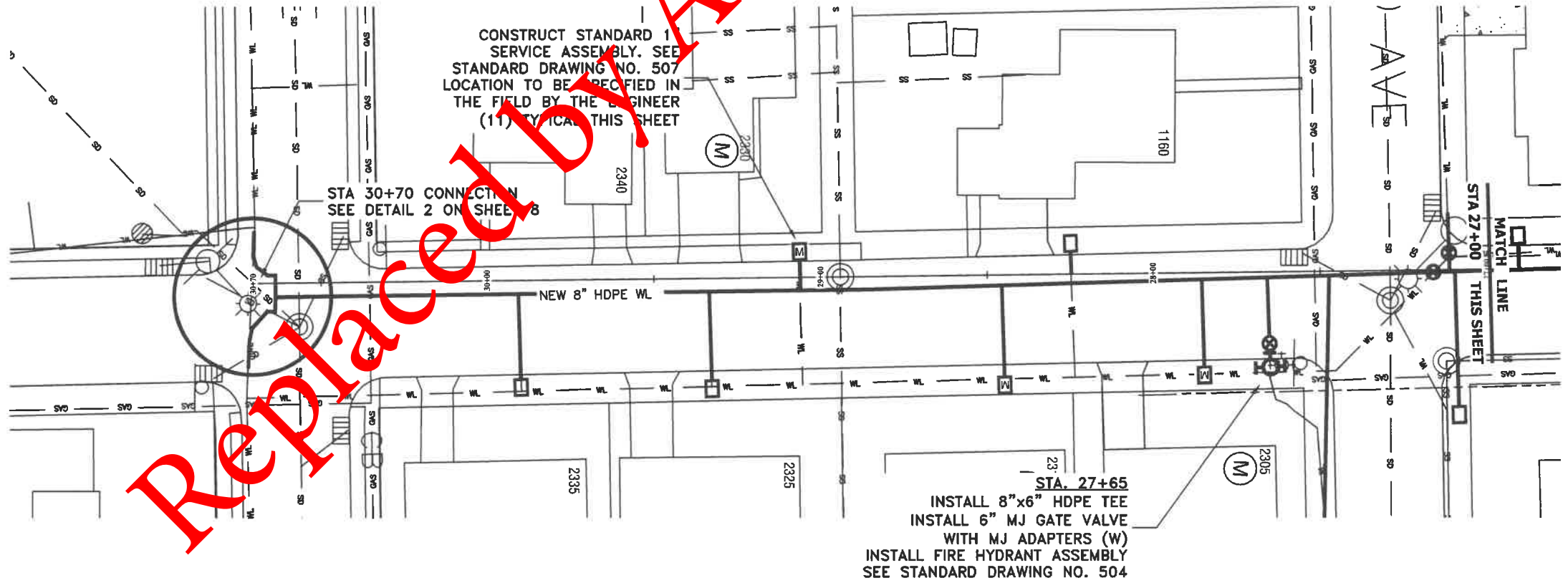
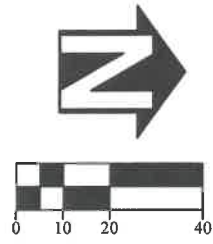
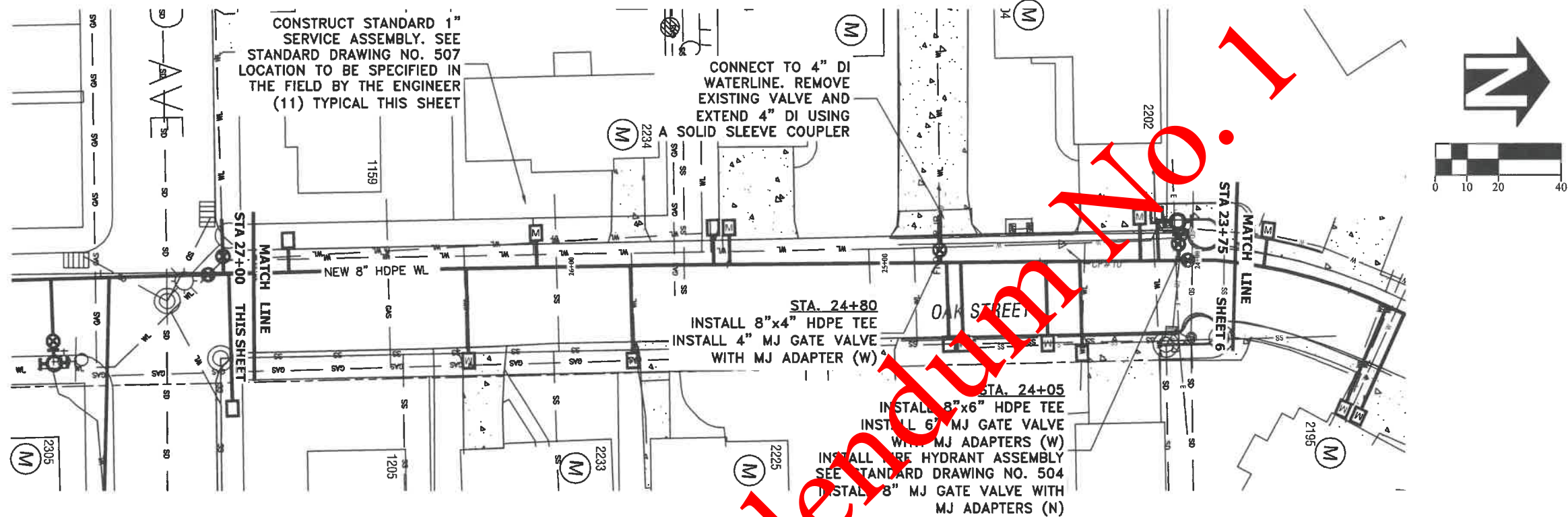
Albany

WL-18-02, PINE MEADOWS WATER LINE REPLACEMENT
 PINE MEADOW DR STA 20+25 TO 24+25 AND ASPEN CIRCLE



EXPIRATION DATE: 12/31/2018

SHEET NO. 6 OF 11
 PROJECT NO: WL-18-02
 FILE: BASE.DWG



Replaced by Addendum No. 1

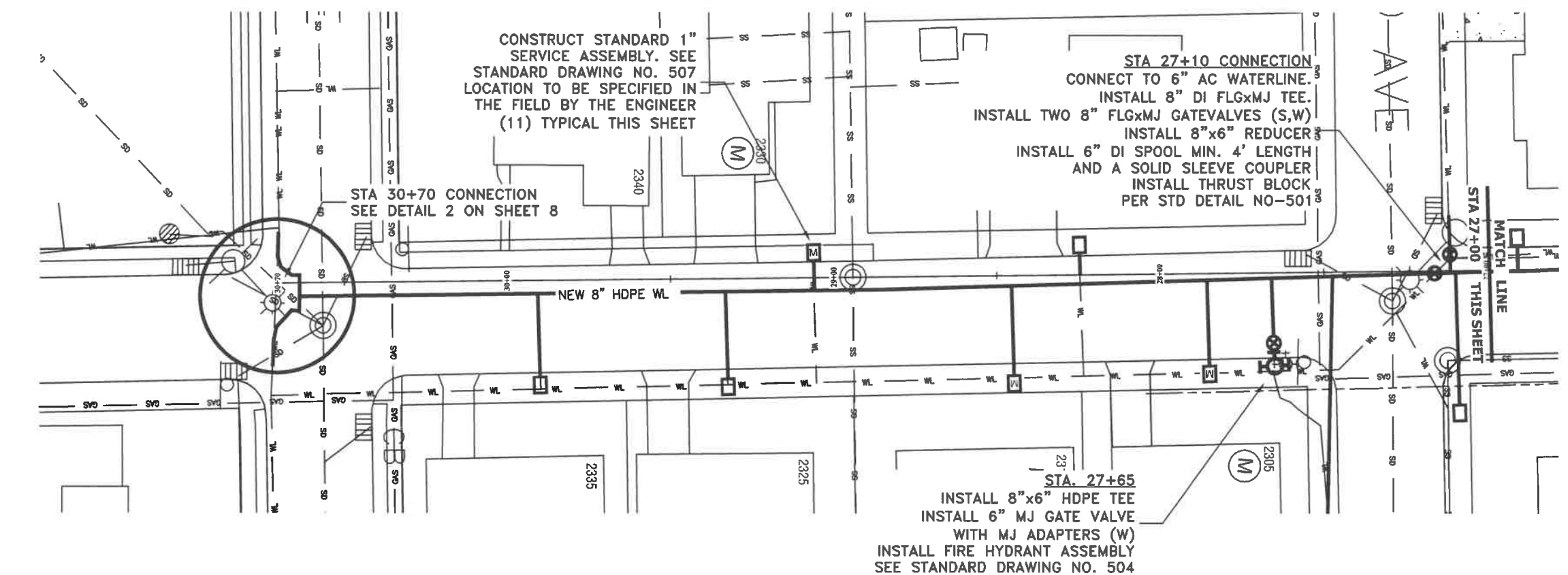
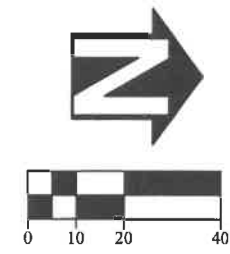
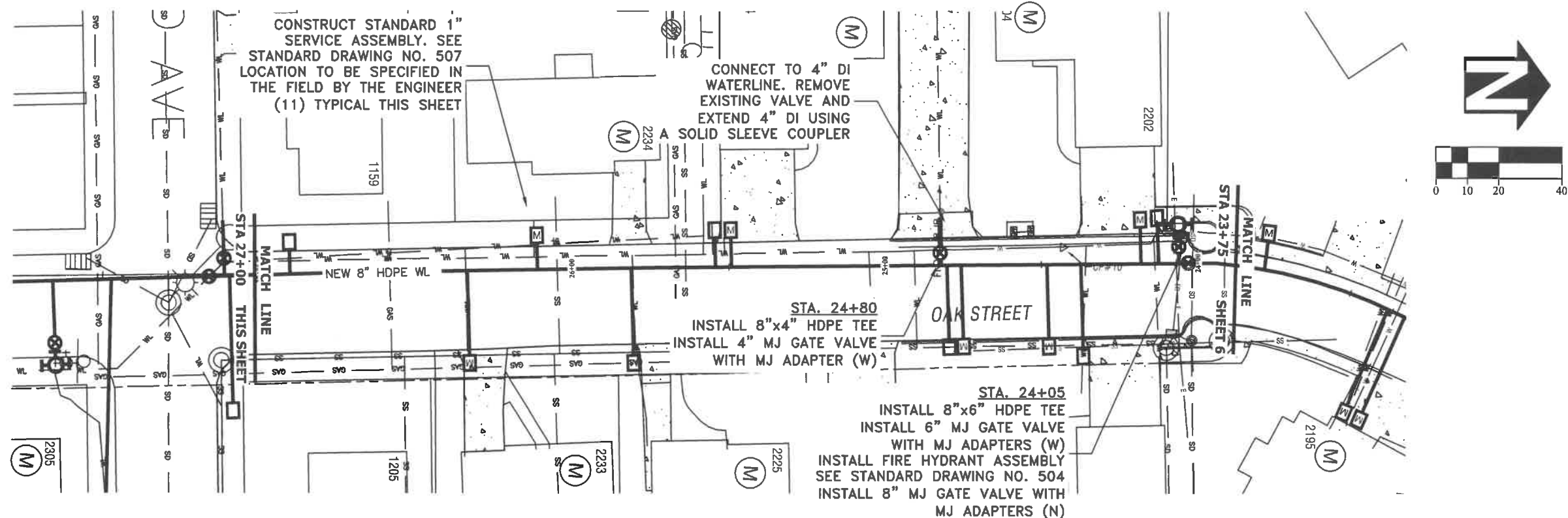
DESIGNED:	N. NELSON
DRAWN:	N. NELSON
CHECKED:	S. BELCASTRO
DATE:	6/29/2018
REVISIONS	
DATE:	BY:
NO:	

PUBLIC WORKS DEPARTMENT
ENGINEERING SERVICES

WL-18-02, PINE MEADOWS WATER LINE REPLACEMENT
PINE MEADOW DR STA 24+25 TO END

REGISTERED PROFESSIONAL
ENGINEER
82577PE
Nolan J. Nelson
OREGON
JUNE 29, 2009
NOLAN J. NELSON


EXPIRATION DATE: 12/31/2018
SHEET NO. 7 OF 11
PROJECT NO: WL-18-02
FILE: BASE.DWG



DESIGNED: N. NELSON
 DRAWN: N. NELSON
 CHECKED: S. BELCASTRO
 DATE: 6/29/2018

REVISIONS	NO.	BY	DATE
	1	NIN	7/13/18

PUBLIC WORKS DEPARTMENT
ENGINEERING SERVICES



WL-18-02, PINE MEADOWS WATER LINE REPLACEMENT
 PINE MEADOW DR STA 24+25 TO END

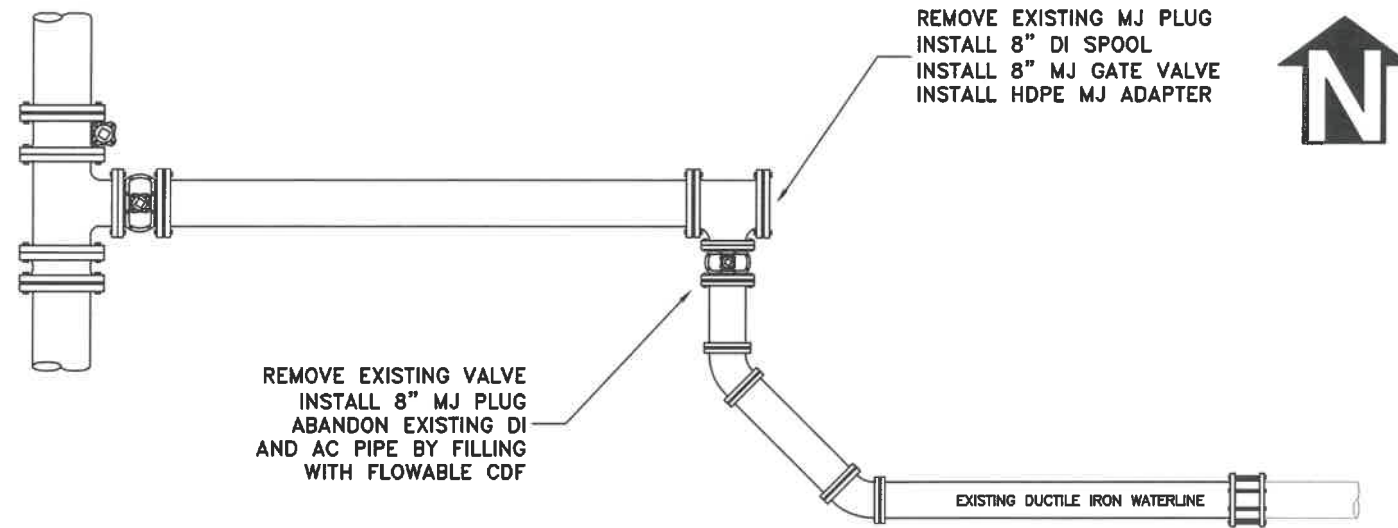
REGISTERED PROFESSIONAL
 ENGINEER
 82577PE

OREGON
 JUNE 29, 2009
 NOLAN J. NELSON

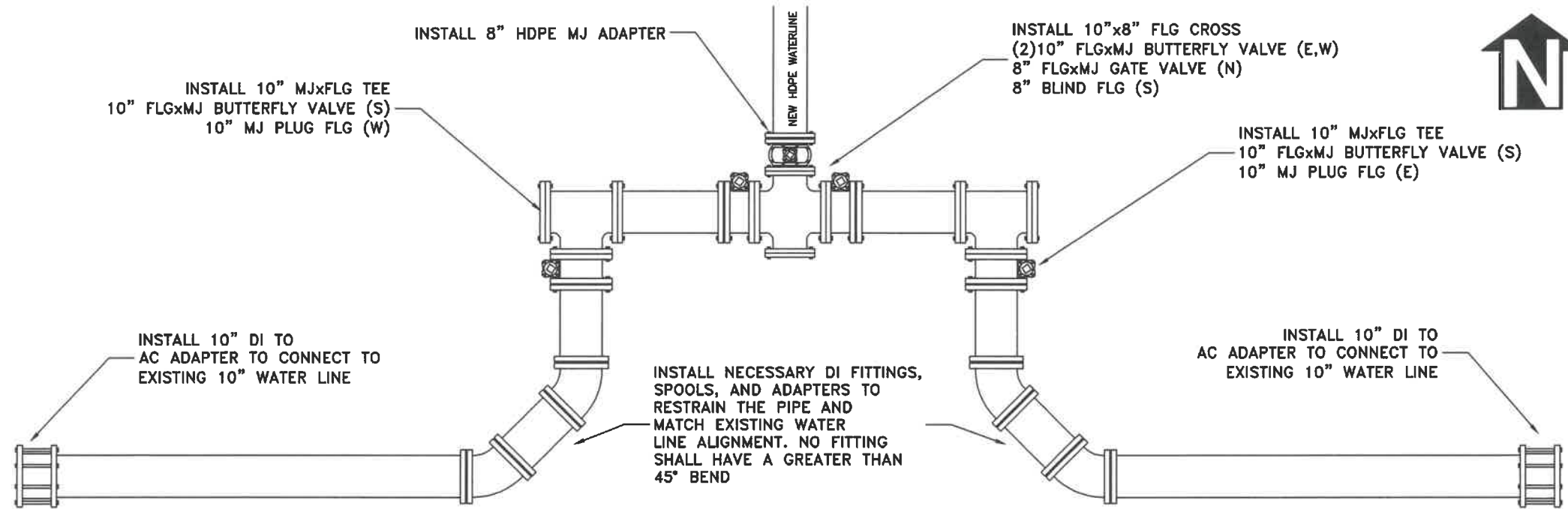
EXPIRATION DATE: 12/31/2018

SHEET NO.	7 OF 11
PROJECT NO.	WL-18-02
FILE:	BASE.DWG

DETAIL 1
STATION 0+00 CONNECTION (N.T.S.)



DETAIL 2
STATION 30+70 CONNECTION (N.T.S.)



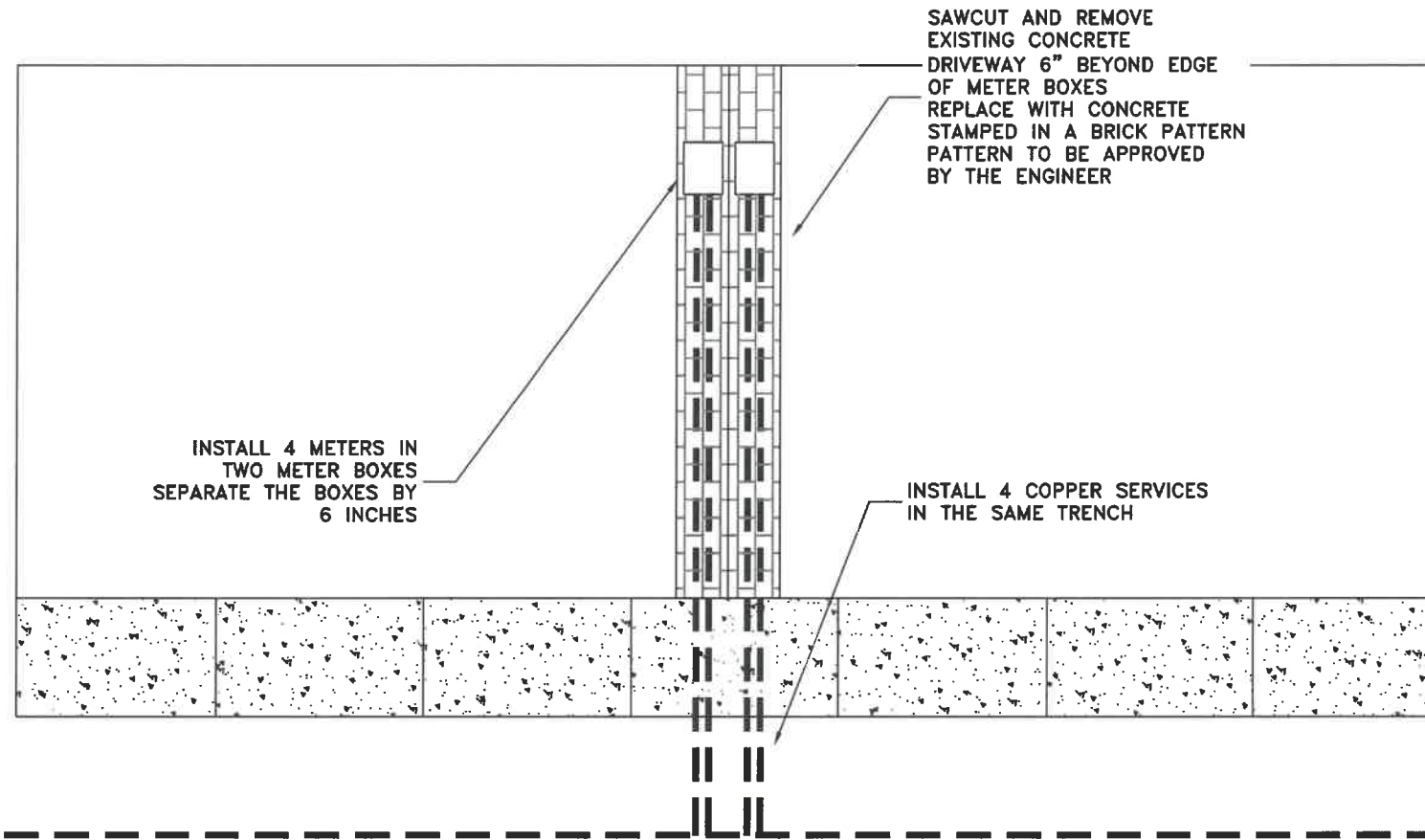
DESIGNED: N. NELSON	REVISIONS
DRAWN: N. NELSON	NO: --
CHECKED: S. BELCASTRO	BY: --
DATE: 6/29/2018	DATE: --

PUBLIC WORKS DEPARTMENT
ENGINEERING SERVICES

WL-18-02, PINE MEADOWS WATER LINE REPLACEMENT
WATER CONNECTION DETAILS



DETAIL 3
DRIVEWAY REPAIR DETAIL (N.T.S.)



DESIGNED: N. NELSON	REVISIONS
DRAWN: N. NELSON	NO: -- BY: --
CHECKED: S. BELCASTRO	NO: -- BY: --
DATE: 6/29/2018	NO: -- BY: --

PUBLIC WORKS DEPARTMENT
ENGINEERING SERVICES

WL-18-02, PINE MEADOWS WATER LINE REPLACEMENT
DRIVEWAY REPAIR DETAIL

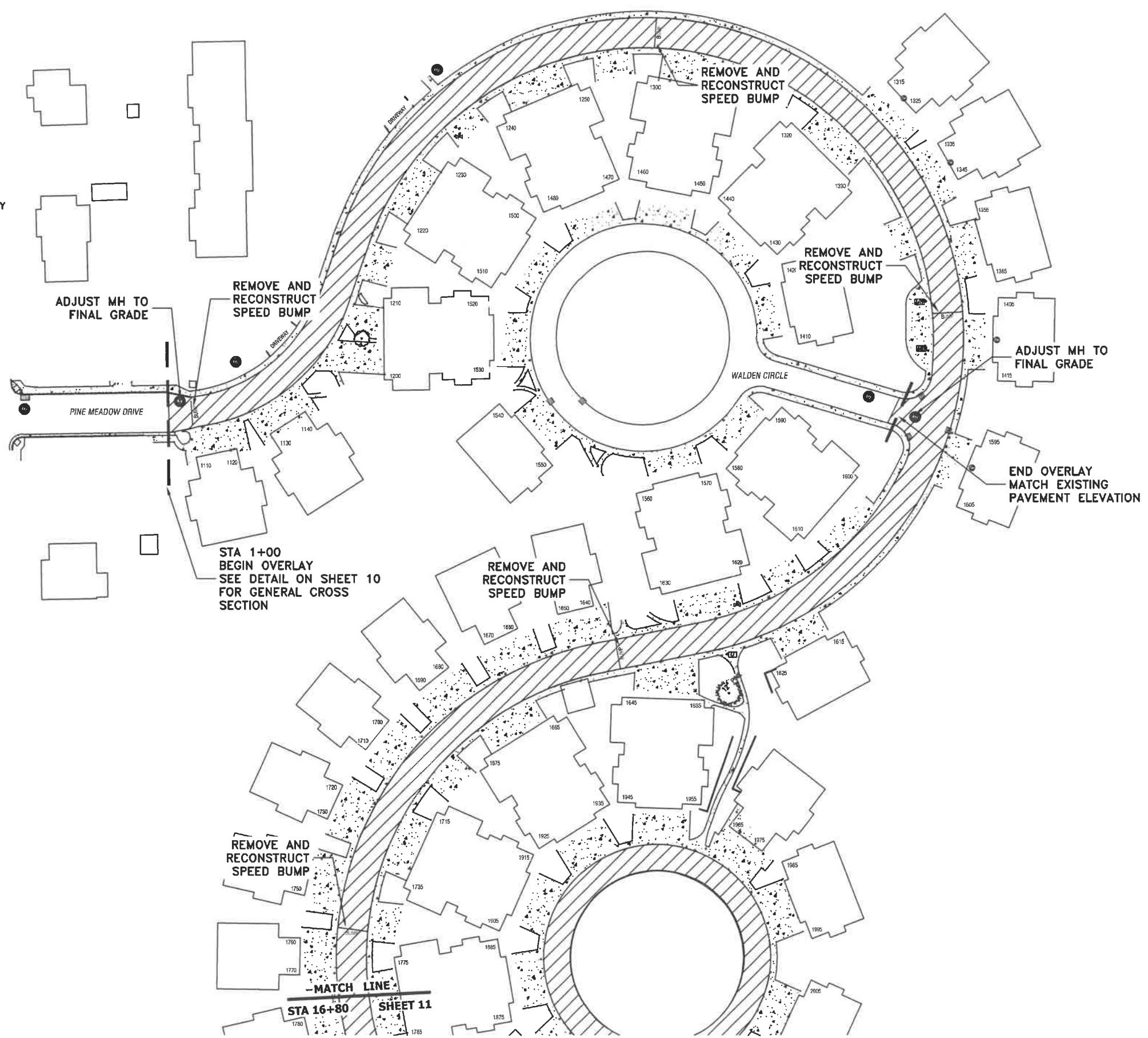
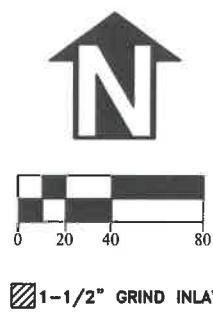


EXPIRATION DATE: 12/31/2018

SHEET NO. 9 OF 11


PROJECT NO: WL-18-02

FILE: BASE.DWG



DESIGNED: N. NELSON	REVISIONS
DRAWN: N. NELSON	NO: ---
CHECKED: S. BELCASTRO	BY: ---
DATE: 6/29/2018	DATE: ---

**PUBLIC WORKS DEPARTMENT
ENGINEERING SERVICES**

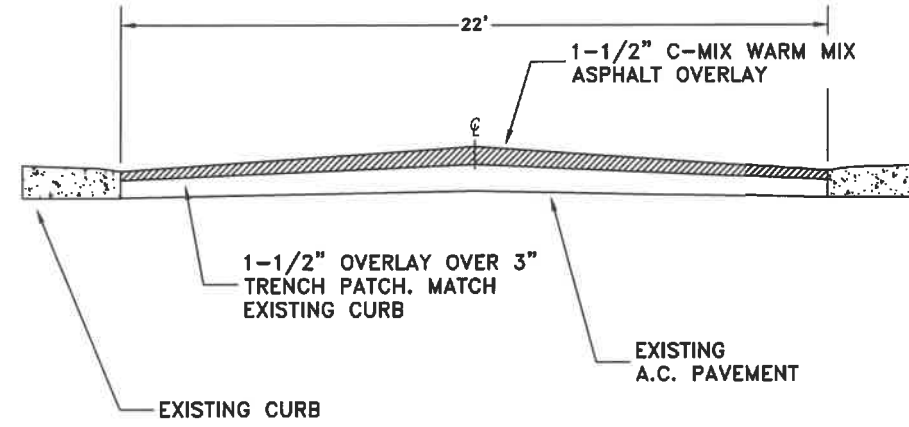
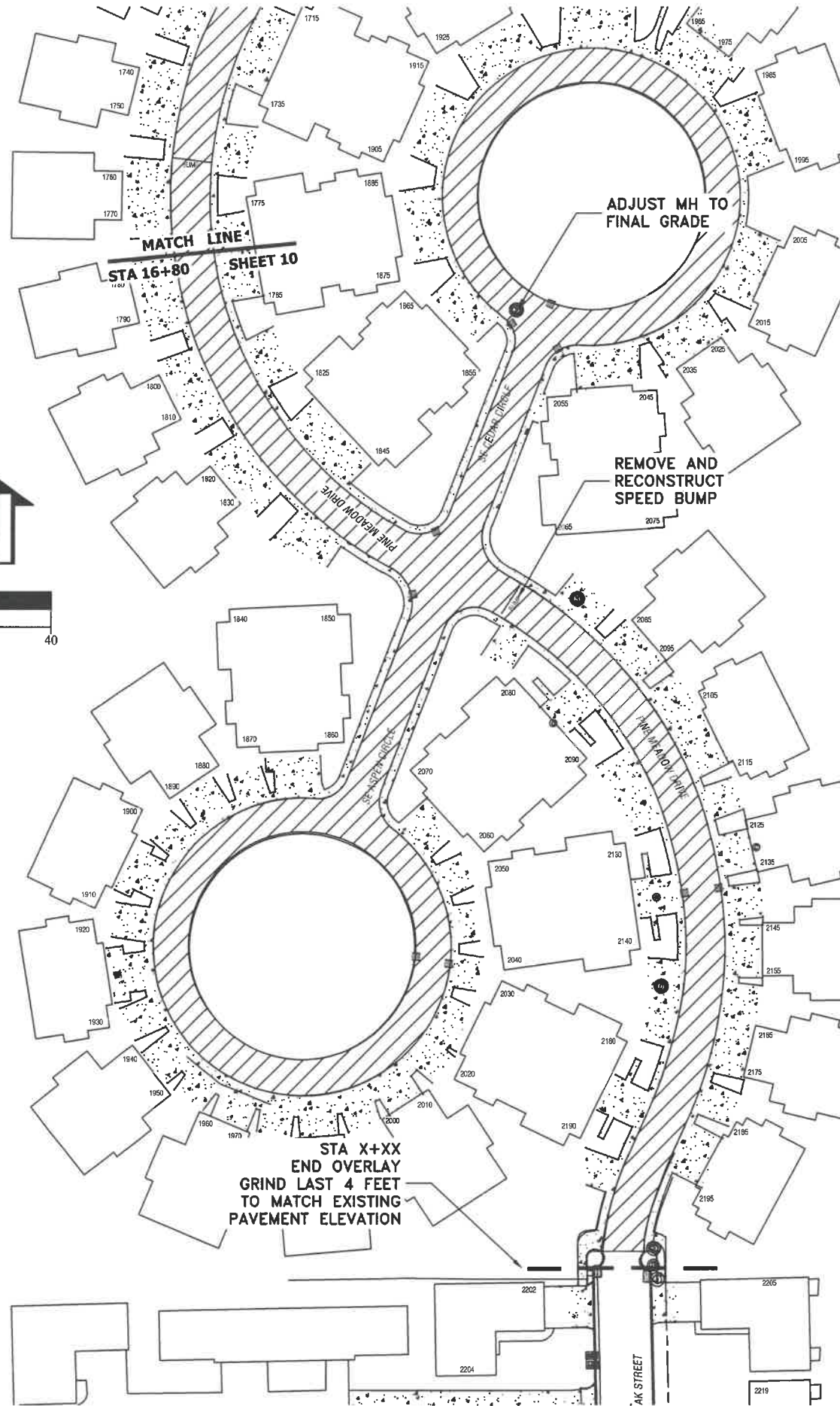
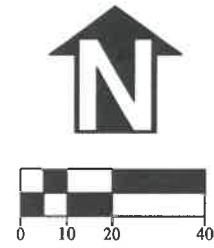


**WL-18-02, PINE MEADOWS WATER LINE REPLACEMENT
PAVING STA 0+00 TO 16+80**

REGISTERED PROFESSIONAL
ENGINEER
82577PE
Nolan J. Nelson
OREGON
JUNE 29, 2009
NOLAN J. NELSON


EXPIRATION DATE: 12/31/2018

SHEET NO. 10 OF 11
PROJECT NO: WL-18-02
FILE: BASE.DWG



DESIGNED: N. NELSON	REVISIONS
DRAWN: N. NELSON	NO: ---
CHECKED: S. BELCASTRO	BY: ---
DATE: 6/29/2018	DATE: ---

PUBLIC WORKS DEPARTMENT
ENGINEERING SERVICES



WL-18-02, PINE MEADOWS WATER LINE REPLACEMENT
PAVING STA 16+80 TO END



EXPIRATION DATE: 12/31/2018
 SHEET NO. 11 OF 11
 PROJECT NO: WL-18-02
 FILE: BASE.DWG