

CITY OF ALBANY

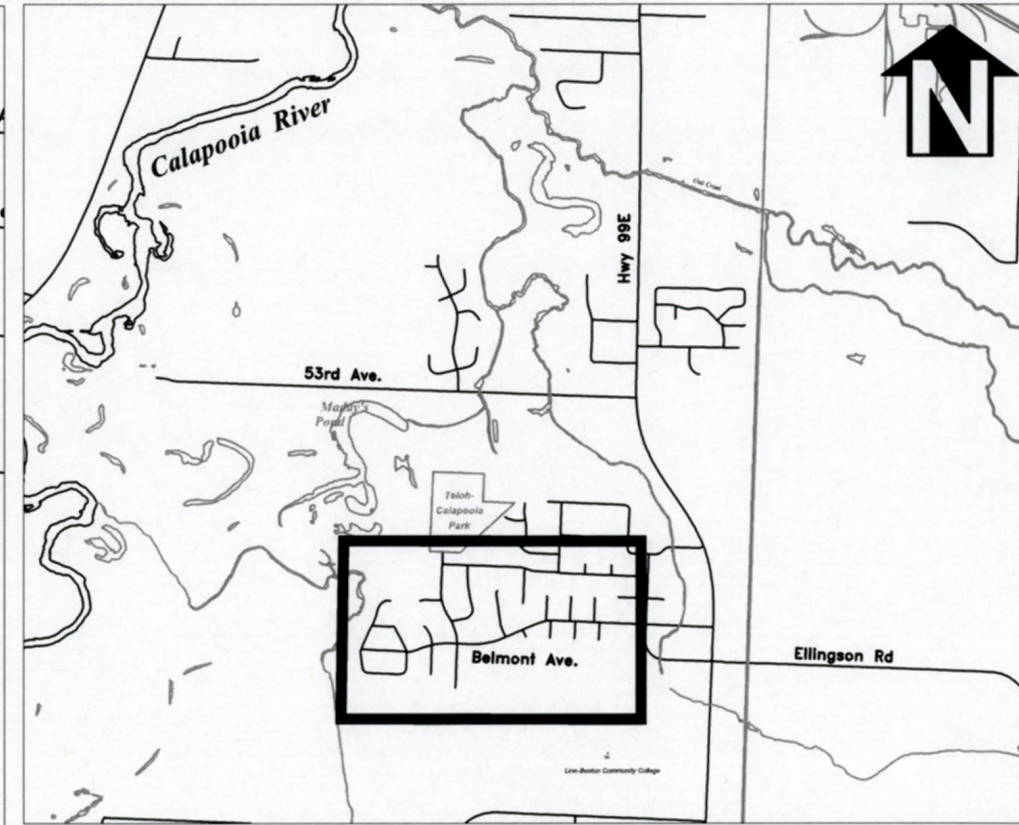
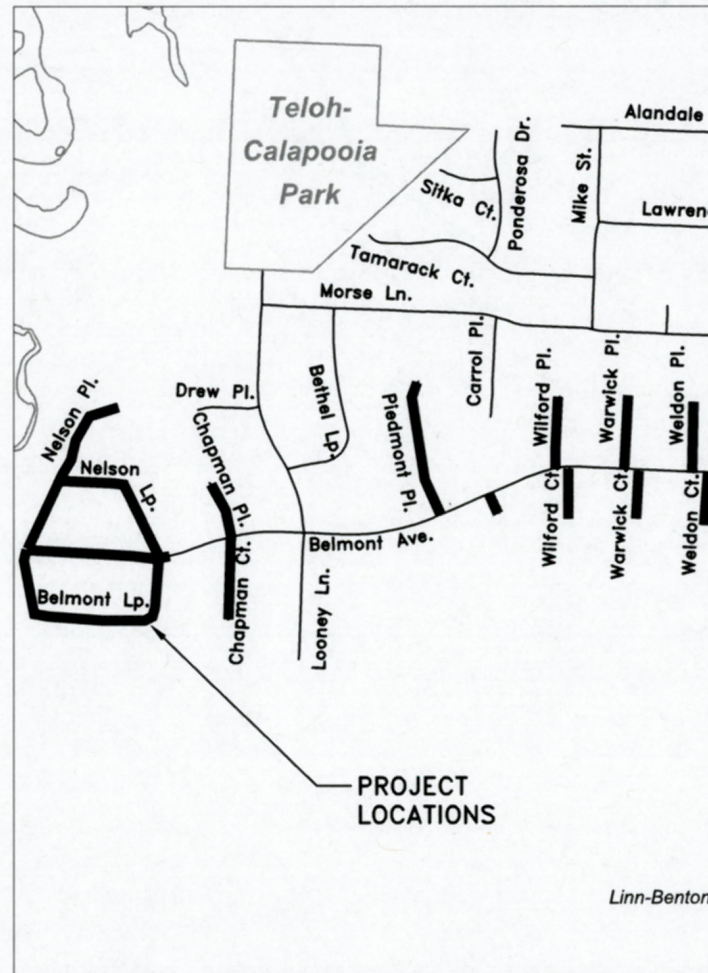
WL-19-01, BELMONT AVENUE AREA WATER LINE REPLACEMENTS

SHEET INDEX

SHEET NO. 1,	COVER & GENERAL NOTES
SHEET NO. 2,	BELMONT LOOP STA. 0+00-6+00
SHEET NO. 3,	BELMONT LOOP STA. 6+00-9+11
SHEET NO. 4,	BELMONT AVE STA. 0+00-4+75
SHEET NO. 5,	BELMONT AVE STA. 4+75-5+44
SHEET NO. 6,	NELSON PL STA. 0+00-4+00
SHEET NO. 7,	NELSON PL STA. 4+00-6+98
SHEET NO. 8,	NELSON LOOP
SHEET NO. 9,	CHAPMAN PLACE
SHEET NO. 10,	CHAPMAN COURT
SHEET NO. 11,	PIEDMONT PLACE
SHEET NO. 12,	BELMONT
SHEET NO. 13,	WILFORD PLACE & COURT
SHEET NO. 14,	WARWICK PLACE & COURT
SHEET NO. 15,	WELDON PLACE & COURT

LEGEND

	EXISTING WATER SERVICE		EXISTING POWER POLE
	RECONNECT EXISTING METER		EXISTING STORM MANHOLE
	REPLACE EXISTING METER USING A COPPER SERVICE		NEW CURB INLET
	INSTALL NEW SERVICE WITH NO METER		NEW CATCH BASIN
	AIR RELEASE VALVE		EXISTING CURB INLET
	EXISTING WATER VALVE		EXISTING CATCH BASIN
	NEW WATER VALVE		EXISTING STREET LIGHT
	EXISTING WATER LINE		EXISTING TRAFFIC SIGN
	EXISTING GAS LINE		NEW TRAFFIC SIGN
	EXISTING STORM LINE		EXISTING HYDRANT
	EXISTING SANITARY SEWER LINE		NEW HYDRANT
	EXISTING QLN DUCT		REDUCER
	EXISTING POWER LINES		
	NEW WATER LINE		
	NEW STORM LINE		
	NEW STORM DRAIN MAINLINE CLEANOUT		
	NEW STORM DRAIN MANHOLE		



GENERAL NOTES

- ALL CONSTRUCTION SHALL CONFORM TO THE CITY OF ALBANY STANDARD CONSTRUCTION SPECIFICATIONS AND ASSOCIATED STANDARD DRAWINGS. THE CURRENT VERSION OF THE CITY OF ALBANY STANDARD CONSTRUCTION SPECIFICATIONS CAN BE FOUND ON THE CITY'S WEBSITE AT WWW.CITYOFALBANY.NET.
- UTILITIES SHOWN ARE FOR REFERENCE ONLY. FOR A FIELD LOCATE, CALL THE UTILITIES NOTIFICATIONS CENTER AT 1-800-332-2344.
- OPERATING ACCESS FOR CITY MAINTENANCE PERSONNEL TO EXISTING AND NEW WATER VALVES AND MANHOLES SHALL BE CONTINUOUSLY MAINTAINED BY THE CONTRACTOR DURING ALL CONSTRUCTION ACTIVITIES.
- CONTRACTOR SHALL VERIFY ALL EXISTING PIPE ELEVATIONS, PIPE DIAMETERS, AND PIPE MATERIALS AT CONNECTION AND ABANDONMENT LOCATIONS PRIOR TO CONSTRUCTION. ANY DISCREPANCIES SHALL BE REPORTED TO ENGINEER PRIOR TO BEGINNING WORK.
- ATTENTION: OREGON LAW REQUIRES YOU TO FOLLOW RULES ADOPTED BY THE OREGON UTILITY NOTIFICATION CENTER. THOSE RULES ARE SET FORTH IN OAR 952-001-0010 THROUGH OAR 952-001-0090. YOU MAY OBTAIN COPIES OF THE RULES BY CALLING THE CENTER. (NOTE: THE TELEPHONE NUMBER FOR THE OREGON UTILITY NOTIFICATION CENTER IS (503) 232-1987).
- CONTRACTOR SHALL BE RESPONSIBLE FOR PROPER INSTALLATION AND MAINTENANCE OF ALL EROSION PREVENTION SEDIMENT CONTROL (EPSC) MEASURES IN ACCORDANCE WITH LOCAL, STATE, AND FEDERAL REGULATIONS UNTIL ALL CONSTRUCTION IS COMPLETED AND APPROVED BY THE CITY OF ALBANY, AND VEGETATION/LANDSCAPING IS ESTABLISHED. FOR GUIDANCE, REFER TO THE CITY OF ALBANY EPSC MANUAL WHICH CAN BE FOUND AT www.cityofalbany.net.

DESIGNED: A. MONACO	REVISIONS
DRAWN: A. MONACO	NO: ---
CHECKED: C. CERKLEWSKI	BY: ---
DATE: 6/12/2019	DATE: ---

PUBLIC WORKS DEPARTMENT
ENGINEERING SERVICES

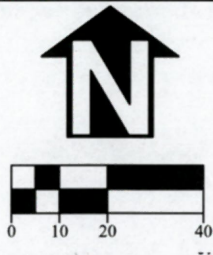
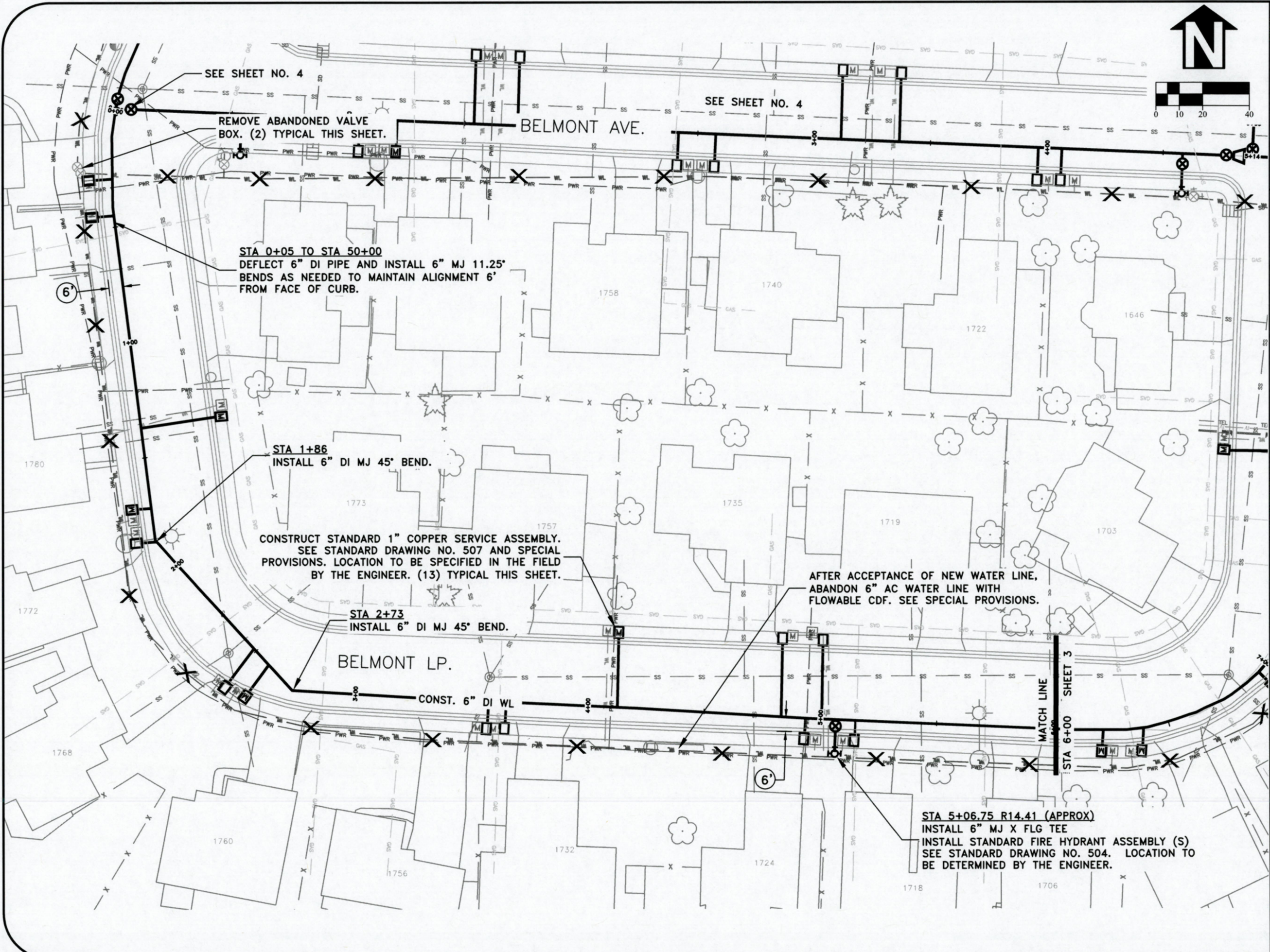
WL-19-01, BELMONT AVENUE AREA WATER LINE REPLACEMENTS

REGISTERED PROFESSIONAL
ENGINEER
56,471PE

Christopher L. Cerkowski
CHRISTOPHER L. CERKLEWSKI
OREGON
JULY 9, 2002

EXPIRATION DATE: 12/31/2019

SHEET NO. 1 OF 15
PROJECT NO: WL-19-01
FILE: FILENAME.DWG



DESIGNED: A. MONACO
 DRAWN: A. MONACO
 CHECKED: C. CERKLEWSKI
 DATE: 6/12/2019

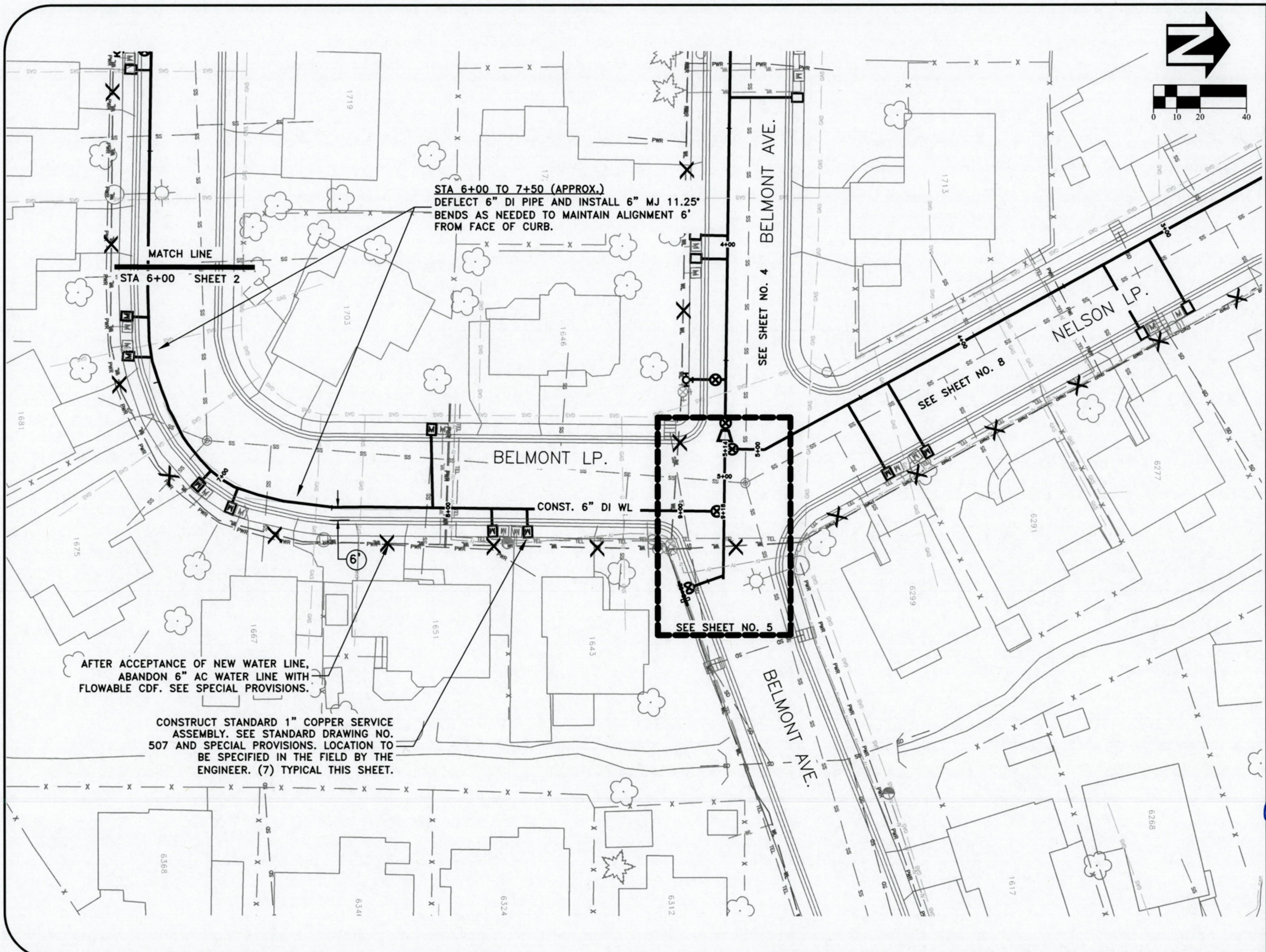
REVISIONS	
NO.	BY:

PUBLIC WORKS DEPARTMENT
ENGINEERING SERVICES

WL-19-01, BELMONT AREA WATER LINE REPLACEMENTS
BELMONT LOOP



EXPIRATION DATE: 12/31/2019
 SHEET NO. 2 OF 15
 PROJECT NO: WL-19-01
 FILE: BELMONT.DWG



STA 6+00 TO 7+50 (APPROX.)
 DEFLECT 6" DI PIPE AND INSTALL 6" MJ 11.25'
 BENDS AS NEEDED TO MAINTAIN ALIGNMENT 6'
 FROM FACE OF CURB.

AFTER ACCEPTANCE OF NEW WATER LINE,
 ABANDON 6" AC WATER LINE WITH
 FLOWABLE CDF. SEE SPECIAL PROVISIONS.

CONSTRUCT STANDARD 1" COPPER SERVICE
 ASSEMBLY. SEE STANDARD DRAWING NO.
 507 AND SPECIAL PROVISIONS. LOCATION TO
 BE SPECIFIED IN THE FIELD BY THE
 ENGINEER. (7) TYPICAL THIS SHEET.

DESIGNED: A. MONACO	REVISIONS
DRAWN: A. MONACO	NO: ---
CHECKED: C. CERKLEWSKI	BY: ---
DATE: 6/12/2019	DATE: ---

PUBLIC WORKS DEPARTMENT
ENGINEERING SERVICES

WL-19-01, BELMONT AREA WATER LINE REPLACEMENTS
BELMONT LOOP

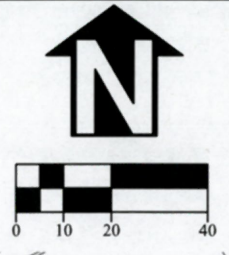
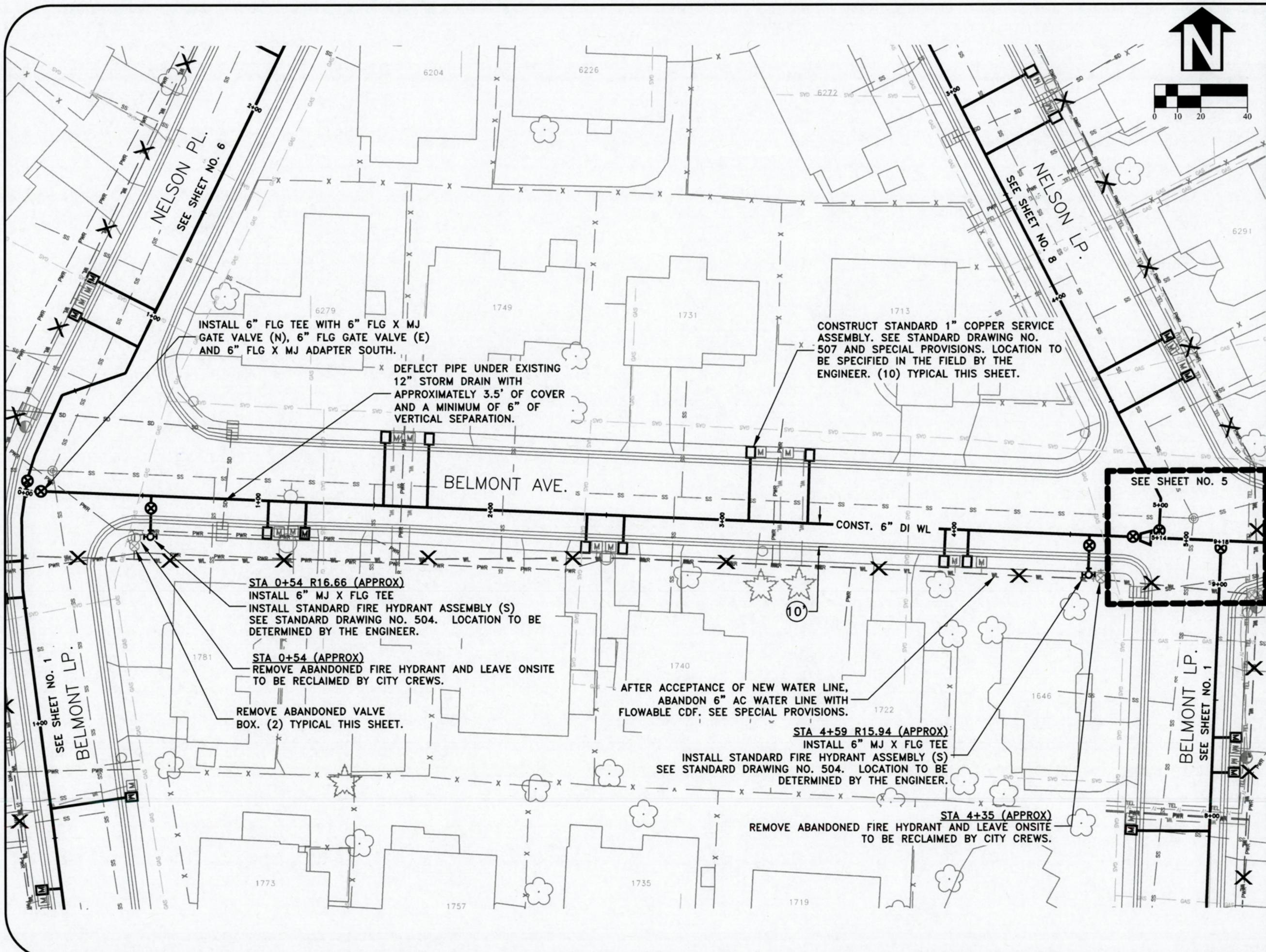


EXPIRATION DATE: 12/31/2019

SHEET NO. 3 OF 15

PROJECT NO: WL-19-01

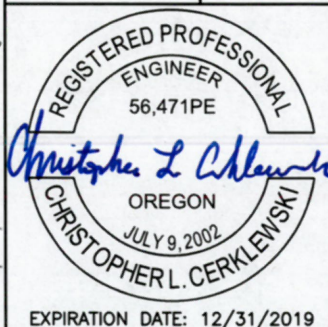
FILE: BELMONT.DWG



DESIGNED: A. MONACO	REVISIONS
DRAWN: A. MONACO	NO: ---
CHECKED: C. CERKLEWSKI	BY: ---
DATE: 6/12/2019	DATE: ---

PUBLIC WORKS DEPARTMENT
ENGINEERING SERVICES

WL-19-01, BELMONT AREA WATER LINE REPLACEMENTS
BELMONT AVENUE

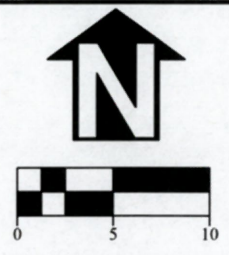
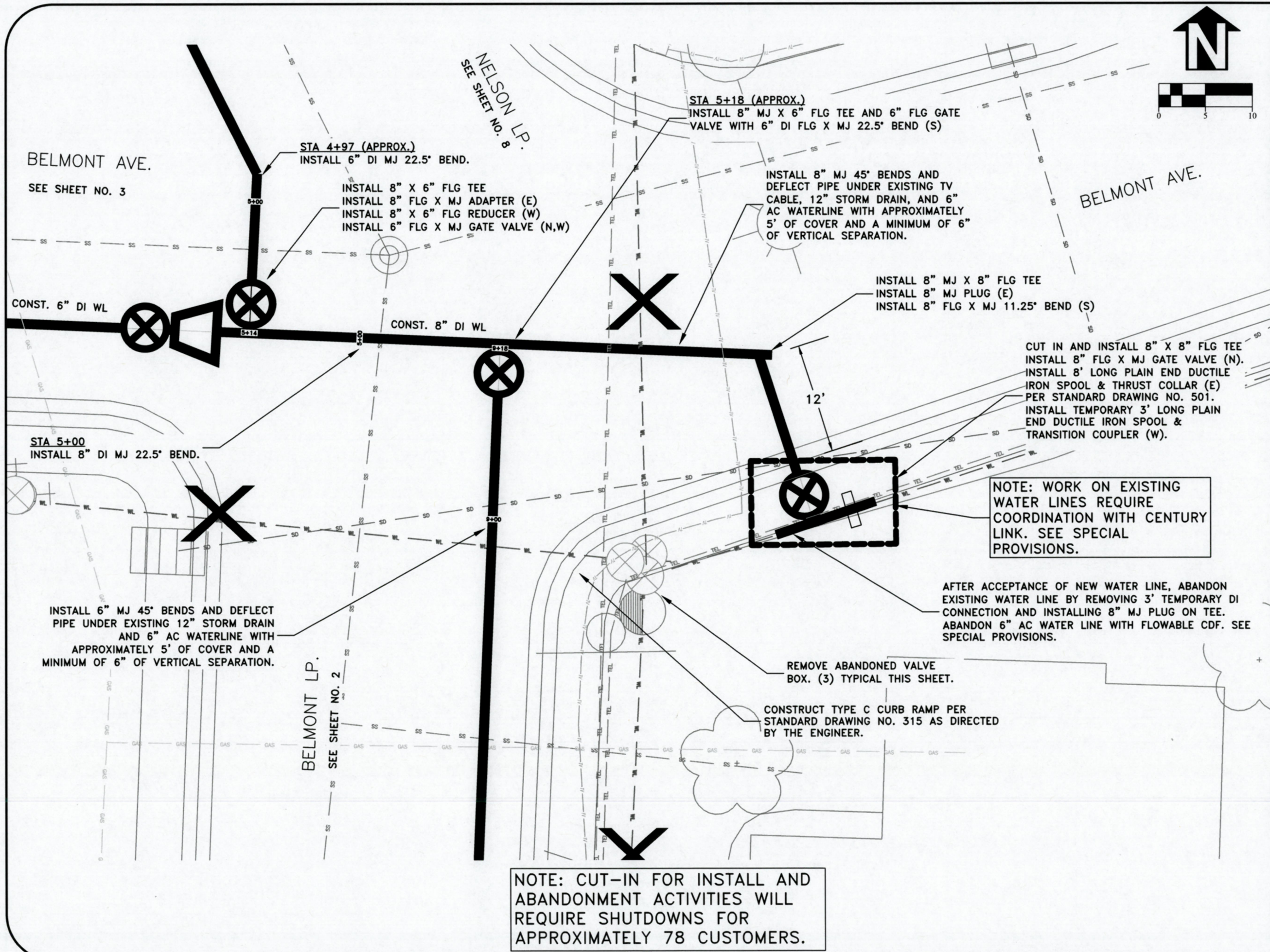


EXPIRATION DATE: 12/31/2019

SHEET NO. 4 OF 15

PROJECT NO: WL-19-01

FILE: BELMONT.DWG



DESIGNED: A. MONACO	REVISIONS
DRAWN: A. MONACO	NO: ---
CHECKED: C. CERKLEWSKI	BY: ---
DATE: 6/12/2019	DATE: ---

PUBLIC WORKS DEPARTMENT
ENGINEERING SERVICES

WL-19-01, BELMONT AREA WATER LINE REPLACEMENTS
BELMONT AVENUE



EXPIRATION DATE: 12/31/2019

SHEET NO. 5 OF 15

PROJECT NO: WL-19-01

FILE: BELMONT.DWG

NOTE: CUT-IN FOR INSTALL AND ABANDONMENT ACTIVITIES WILL REQUIRE SHUTDOWNS FOR APPROXIMATELY 78 CUSTOMERS.

NOTE: WORK ON EXISTING WATER LINES REQUIRE COORDINATION WITH CENTURY LINK. SEE SPECIAL PROVISIONS.

AFTER ACCEPTANCE OF NEW WATER LINE, ABANDON EXISTING WATER LINE BY REMOVING 3' TEMPORARY DI CONNECTION AND INSTALLING 8" MJ PLUG ON TEE. ABANDON 6" AC WATER LINE WITH FLOWABLE CDF. SEE SPECIAL PROVISIONS.

REMOVE ABANDONED VALVE BOX. (3) TYPICAL THIS SHEET.

CONSTRUCT TYPE C CURB RAMP PER STANDARD DRAWING NO. 315 AS DIRECTED BY THE ENGINEER.

BELMONT LP.
SEE SHEET NO. 2

BELMONT AVE.
SEE SHEET NO. 3

NELSON LP.
SEE SHEET NO. 8

STA 4+97 (APPROX.)
INSTALL 6" DI MJ 22.5° BEND.

INSTALL 8" X 6" FLG TEE
INSTALL 8" FLG X MJ ADAPTER (E)
INSTALL 8" X 6" FLG REDUCER (W)
INSTALL 6" FLG X MJ GATE VALVE (N,W)

STA 5+18 (APPROX.)
INSTALL 8" MJ X 6" FLG TEE AND 6" FLG GATE VALVE WITH 6" DI FLG X MJ 22.5° BEND (S)

INSTALL 8" MJ 45° BENDS AND DEFLECT PIPE UNDER EXISTING TV CABLE, 12" STORM DRAIN, AND 6" AC WATERLINE WITH APPROXIMATELY 5' OF COVER AND A MINIMUM OF 6" OF VERTICAL SEPARATION.

INSTALL 8" MJ X 8" FLG TEE
INSTALL 8" MJ PLUG (E)
INSTALL 8" FLG X MJ 11.25° BEND (S)

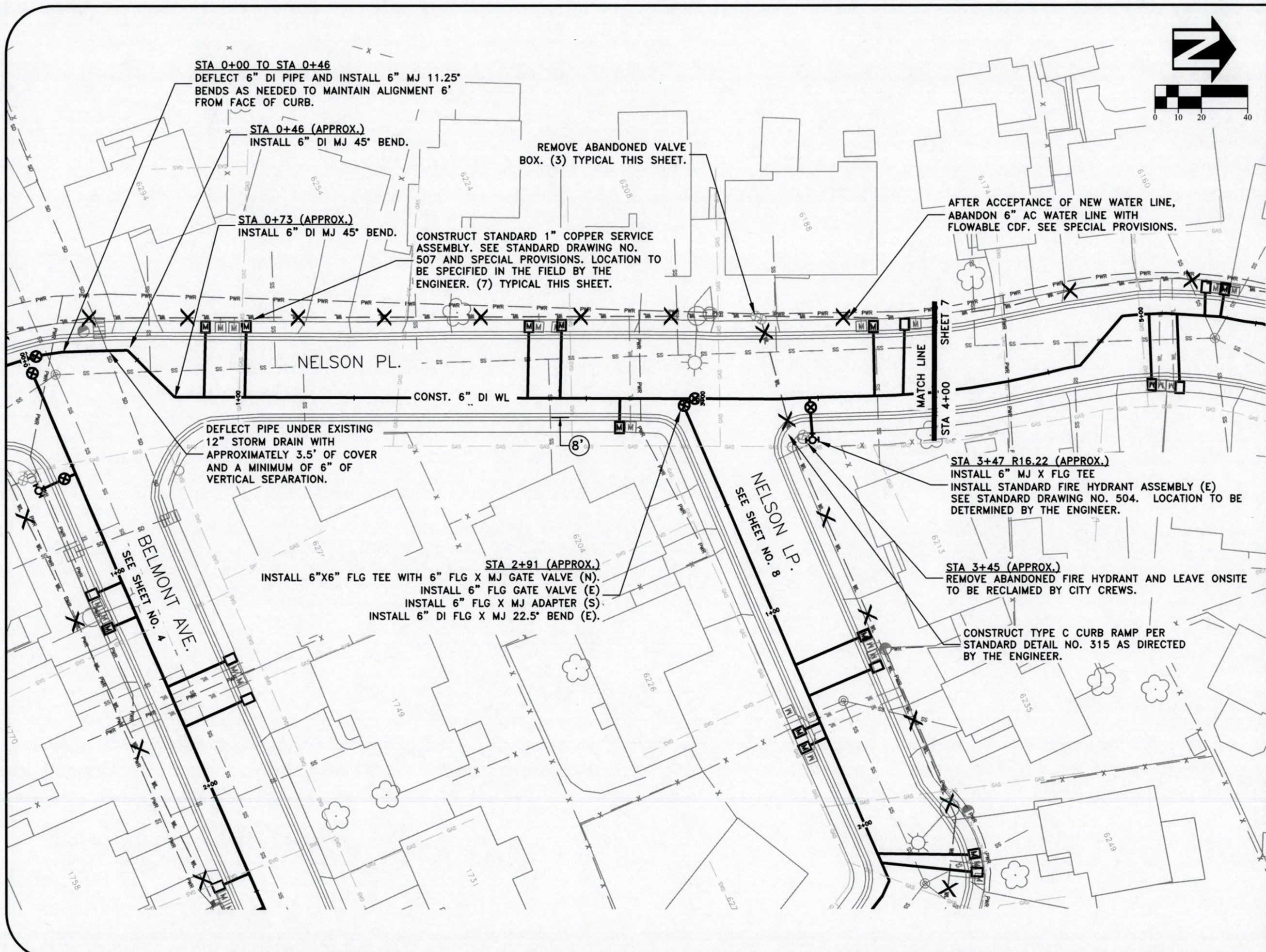
CUT IN AND INSTALL 8" X 8" FLG TEE
INSTALL 8" FLG X MJ GATE VALVE (N).
INSTALL 8' LONG PLAIN END DUCTILE IRON SPOOL & THRUST COLLAR (E) PER STANDARD DRAWING NO. 501.
INSTALL TEMPORARY 3' LONG PLAIN END DUCTILE IRON SPOOL & TRANSITION COUPLER (W).

STA 5+00
INSTALL 8" DI MJ 22.5° BEND.

INSTALL 6" MJ 45° BENDS AND DEFLECT PIPE UNDER EXISTING 12" STORM DRAIN AND 6" AC WATERLINE WITH APPROXIMATELY 5' OF COVER AND A MINIMUM OF 6" OF VERTICAL SEPARATION.

CONST. 6" DI WL

CONST. 8" DI WL



STA 0+00 TO STA 0+46
 DEFLECT 6" DI PIPE AND INSTALL 6" MJ 11.25°
 BENDS AS NEEDED TO MAINTAIN ALIGNMENT 6'
 FROM FACE OF CURB.

STA 0+46 (APPROX.)
 INSTALL 6" DI MJ 45° BEND.

REMOVE ABANDONED VALVE
 BOX. (3) TYPICAL THIS SHEET.

STA 0+73 (APPROX.)
 INSTALL 6" DI MJ 45° BEND.

CONSTRUCT STANDARD 1" COPPER SERVICE
 ASSEMBLY. SEE STANDARD DRAWING NO.
 507 AND SPECIAL PROVISIONS. LOCATION TO
 BE SPECIFIED IN THE FIELD BY THE
 ENGINEER. (7) TYPICAL THIS SHEET.

AFTER ACCEPTANCE OF NEW WATER LINE,
 ABANDON 6" AC WATER LINE WITH
 FLOWABLE CDF. SEE SPECIAL PROVISIONS.

DEFLECT PIPE UNDER EXISTING
 12" STORM DRAIN WITH
 APPROXIMATELY 3.5' OF COVER
 AND A MINIMUM OF 6" OF
 VERTICAL SEPARATION.

CONST. 6" DI WL

STA 3+47 R16.22 (APPROX.)
 INSTALL 6" MJ X FLG TEE
 INSTALL STANDARD FIRE HYDRANT ASSEMBLY (E)
 SEE STANDARD DRAWING NO. 504. LOCATION TO BE
 DETERMINED BY THE ENGINEER.

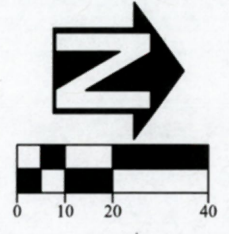
BELMONT AVE.
 SEE SHEET NO. 4

STA 2+91 (APPROX.)
 INSTALL 6"X6" FLG TEE WITH 6" FLG X MJ GATE VALVE (N).
 INSTALL 6" FLG GATE VALVE (E)
 INSTALL 6" FLG X MJ ADAPTER (S)
 INSTALL 6" DI FLG X MJ 22.5° BEND (E).

NELSON LP.
 SEE SHEET NO. 8

STA 3+45 (APPROX.)
 REMOVE ABANDONED FIRE HYDRANT AND LEAVE ONSITE
 TO BE RECLAIMED BY CITY CREWS.

CONSTRUCT TYPE C CURB RAMP PER
 STANDARD DETAIL NO. 315 AS DIRECTED
 BY THE ENGINEER.



DESIGNED: A. MONACO	REVISIONS
DRAWN: A. MONACO	NO: ---
CHECKED: C. CERKLEWSKI	BY: ---
DATE: 6/12/2019	DATE: ---

PUBLIC WORKS DEPARTMENT
ENGINEERING SERVICES

WL-19-01, BELMONT AREA WATER LINE REPLACEMENTS
NELSON PLACE



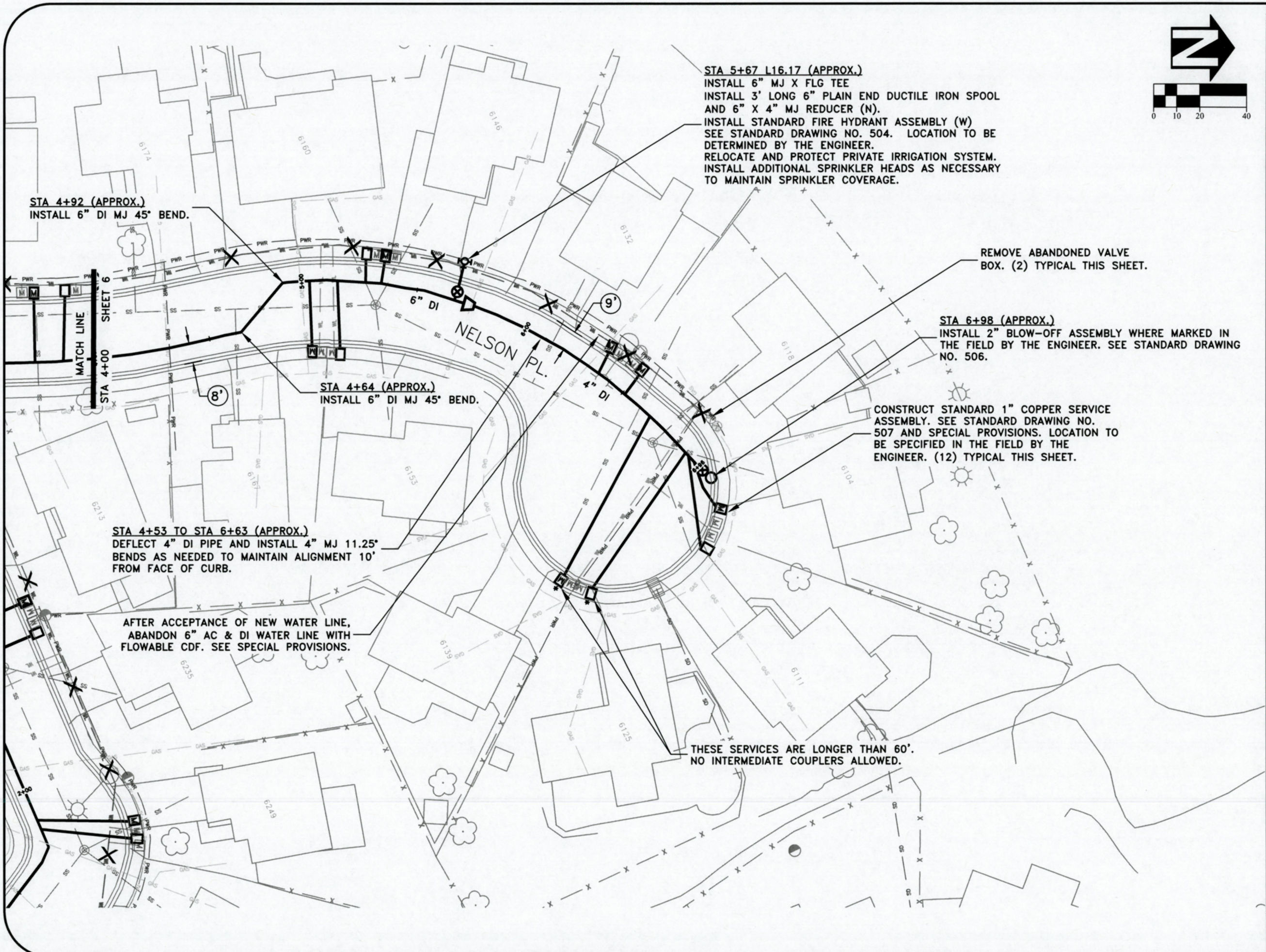
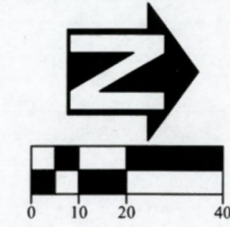
REGISTERED PROFESSIONAL
 ENGINEER
 56,471PE
Christopher L. Cerklewski
 OREGON
 JULY 9, 2002
 CHRISTOPHER L. CERKLEWSKI

EXPIRATION DATE: 12/31/2019

SHEET NO. 6 OF 15

PROJECT NO: WL-19-01

FILE: BELMONT.DWG



STA 5+67 L16.17 (APPROX.)
 INSTALL 6" MJ X FLG TEE
 INSTALL 3' LONG 6" PLAIN END DUCTILE IRON SPOOL
 AND 6" X 4" MJ REDUCER (N).
 INSTALL STANDARD FIRE HYDRANT ASSEMBLY (W)
 SEE STANDARD DRAWING NO. 504. LOCATION TO BE
 DETERMINED BY THE ENGINEER.
 RELOCATE AND PROTECT PRIVATE IRRIGATION SYSTEM.
 INSTALL ADDITIONAL SPRINKLER HEADS AS NECESSARY
 TO MAINTAIN SPRINKLER COVERAGE.

STA 4+92 (APPROX.)
 INSTALL 6" DI MJ 45° BEND.

REMOVE ABANDONED VALVE
 BOX. (2) TYPICAL THIS SHEET.

STA 6+98 (APPROX.)
 INSTALL 2" BLOW-OFF ASSEMBLY WHERE MARKED IN
 THE FIELD BY THE ENGINEER. SEE STANDARD DRAWING
 NO. 506.

STA 4+64 (APPROX.)
 INSTALL 6" DI MJ 45° BEND.

CONSTRUCT STANDARD 1" COPPER SERVICE
 ASSEMBLY. SEE STANDARD DRAWING NO.
 507 AND SPECIAL PROVISIONS. LOCATION TO
 BE SPECIFIED IN THE FIELD BY THE
 ENGINEER. (12) TYPICAL THIS SHEET.

STA 4+53 TO STA 6+63 (APPROX.)
 DEFLECT 4" DI PIPE AND INSTALL 4" MJ 11.25°
 BENDS AS NEEDED TO MAINTAIN ALIGNMENT 10'
 FROM FACE OF CURB.

AFTER ACCEPTANCE OF NEW WATER LINE,
 ABANDON 6" AC & DI WATER LINE WITH
 FLOWABLE CDF. SEE SPECIAL PROVISIONS.

THESE SERVICES ARE LONGER THAN 60'.
 NO INTERMEDIATE COUPLERS ALLOWED.

DESIGNED: A. MONACO
 DRAWN: A. MONACO
 CHECKED: C. CERKLEWSKI
 DATE: 6/12/2019

REVISIONS	NO.	BY:

PUBLIC WORKS DEPARTMENT
ENGINEERING SERVICES

WL-19-01, BELMONT AREA WATER LINE REPLACEMENTS
NELSON PLACE

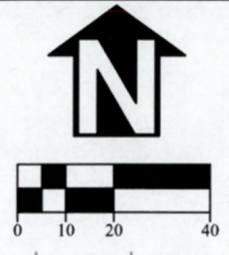
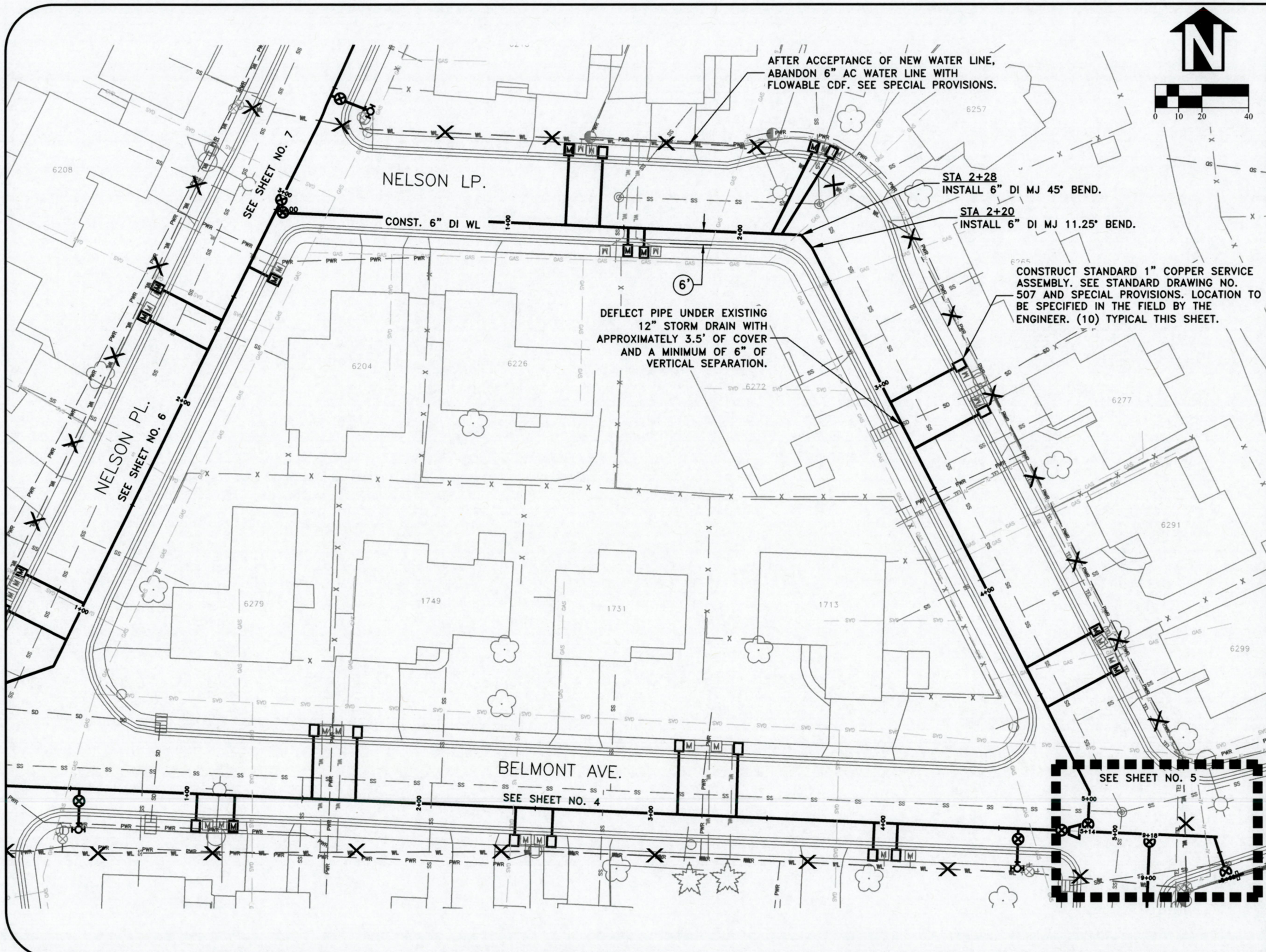


EXPIRATION DATE: 12/31/2019

SHEET NO. 7 OF 15

PROJECT NO: WL-19-01

FILE: BELMONT.DWG



AFTER ACCEPTANCE OF NEW WATER LINE,
 ABANDON 6" AC WATER LINE WITH
 FLOWABLE CDF. SEE SPECIAL PROVISIONS.

STA 2+28
 INSTALL 6" DI MJ 45° BEND.

STA 2+20
 INSTALL 6" DI MJ 11.25° BEND.

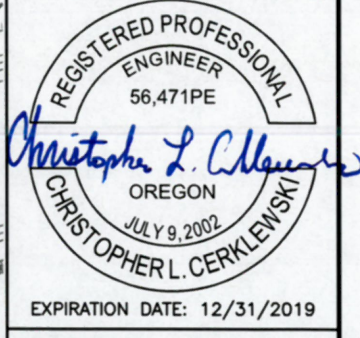
DEFLECT PIPE UNDER EXISTING
 12" STORM DRAIN WITH
 APPROXIMATELY 3.5' OF COVER
 AND A MINIMUM OF 6" OF
 VERTICAL SEPARATION.

CONSTRUCT STANDARD 1" COPPER SERVICE
 ASSEMBLY. SEE STANDARD DRAWING NO.
 507 AND SPECIAL PROVISIONS. LOCATION TO
 BE SPECIFIED IN THE FIELD BY THE
 ENGINEER. (10) TYPICAL THIS SHEET.

DESIGNED: A. MONACO	REVISIONS
DRAWN: A. MONACO	NO: ---
CHECKED: C. CERKLEWSKI	BY: ---
DATE: 6/12/2019	DATE: ---

PUBLIC WORKS DEPARTMENT
ENGINEERING SERVICES

WL-19-01, BELMONT AREA WATER LINE REPLACEMENTS
NELSON LOOP

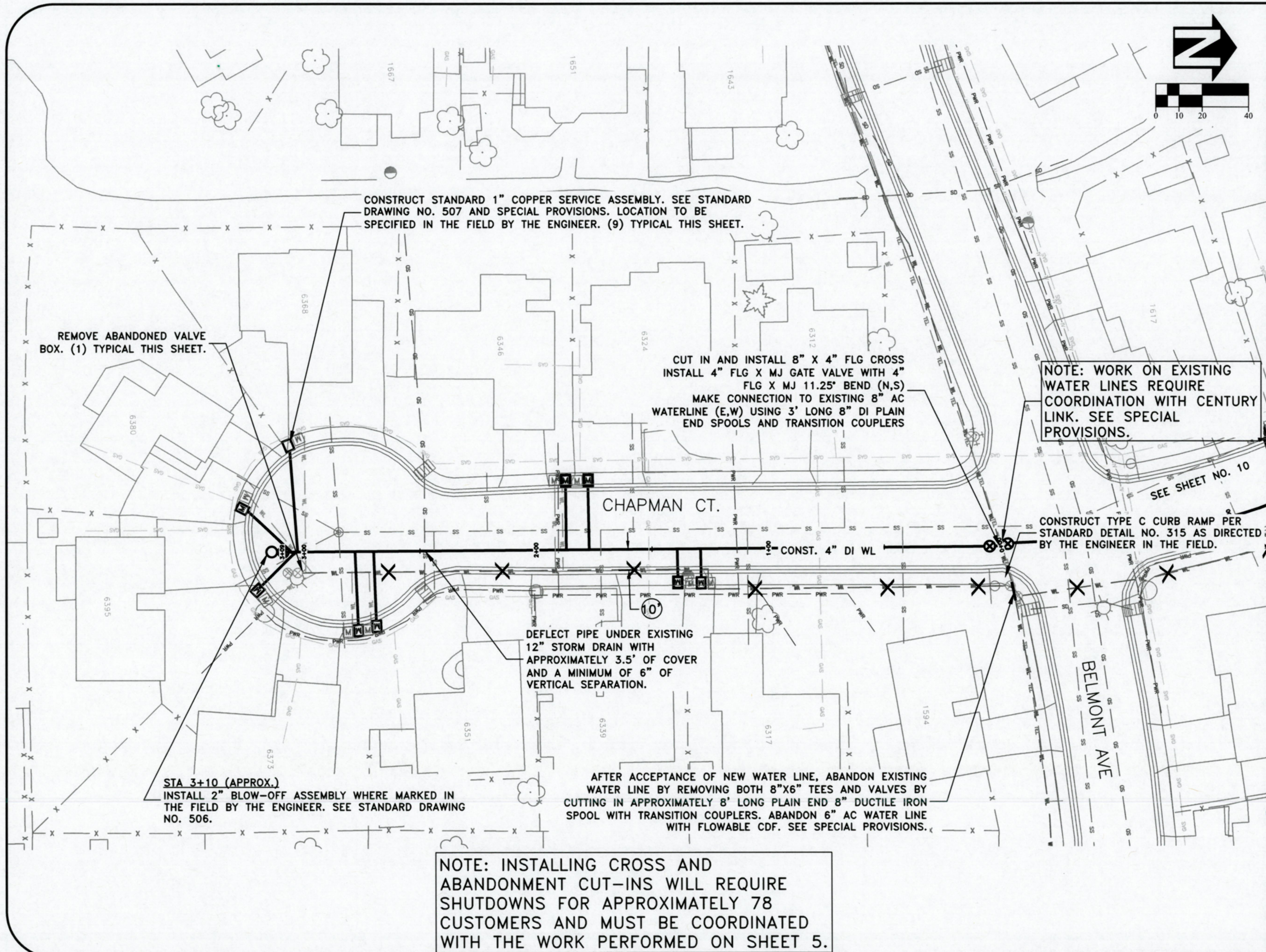


EXPIRATION DATE: 12/31/2019

SHEET NO. 8 OF 15

PROJECT NO: WL-19-01

FILE: BELMONT.DWG



CONSTRUCT STANDARD 1" COPPER SERVICE ASSEMBLY. SEE STANDARD DRAWING NO. 507 AND SPECIAL PROVISIONS. LOCATION TO BE SPECIFIED IN THE FIELD BY THE ENGINEER. (9) TYPICAL THIS SHEET.

REMOVE ABANDONED VALVE BOX. (1) TYPICAL THIS SHEET.

CUT IN AND INSTALL 8" X 4" FLG CROSS
 INSTALL 4" FLG X MJ GATE VALVE WITH 4" FLG X MJ 11.25" BEND (N,S)
 MAKE CONNECTION TO EXISTING 8" AC WATERLINE (E,W) USING 3' LONG 8" DI PLAIN END SPOOLS AND TRANSITION COUPLERS

NOTE: WORK ON EXISTING WATER LINES REQUIRE COORDINATION WITH CENTURY LINK. SEE SPECIAL PROVISIONS.

CONSTRUCT TYPE C CURB RAMP PER STANDARD DETAIL NO. 315 AS DIRECTED BY THE ENGINEER IN THE FIELD.

DEFLECT PIPE UNDER EXISTING 12" STORM DRAIN WITH APPROXIMATELY 3.5' OF COVER AND A MINIMUM OF 6" OF VERTICAL SEPARATION.

STA 3+10 (APPROX.)
 INSTALL 2" BLOW-OFF ASSEMBLY WHERE MARKED IN THE FIELD BY THE ENGINEER. SEE STANDARD DRAWING NO. 506.

AFTER ACCEPTANCE OF NEW WATER LINE, ABANDON EXISTING WATER LINE BY REMOVING BOTH 8"X6" TEES AND VALVES BY CUTTING IN APPROXIMATELY 8' LONG PLAIN END 8" DUCTILE IRON SPOOL WITH TRANSITION COUPLERS. ABANDON 6" AC WATER LINE WITH FLOWABLE CDF. SEE SPECIAL PROVISIONS.

NOTE: INSTALLING CROSS AND ABANDONMENT CUT-INS WILL REQUIRE SHUTDOWNS FOR APPROXIMATELY 78 CUSTOMERS AND MUST BE COORDINATED WITH THE WORK PERFORMED ON SHEET 5.

DESIGNED: A. MONACO	REVISIONS
DRAWN: A. MONACO	NO: ---
CHECKED: C. CERKLEWSKI	BY: ---
DATE: 6/12/2019	DATE: ---

PUBLIC WORKS DEPARTMENT
ENGINEERING SERVICES

WL-19-01, BELMONT AREA WATER LINE REPLACEMENTS
CHAPMAN COURT

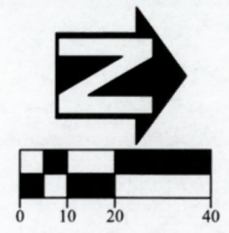
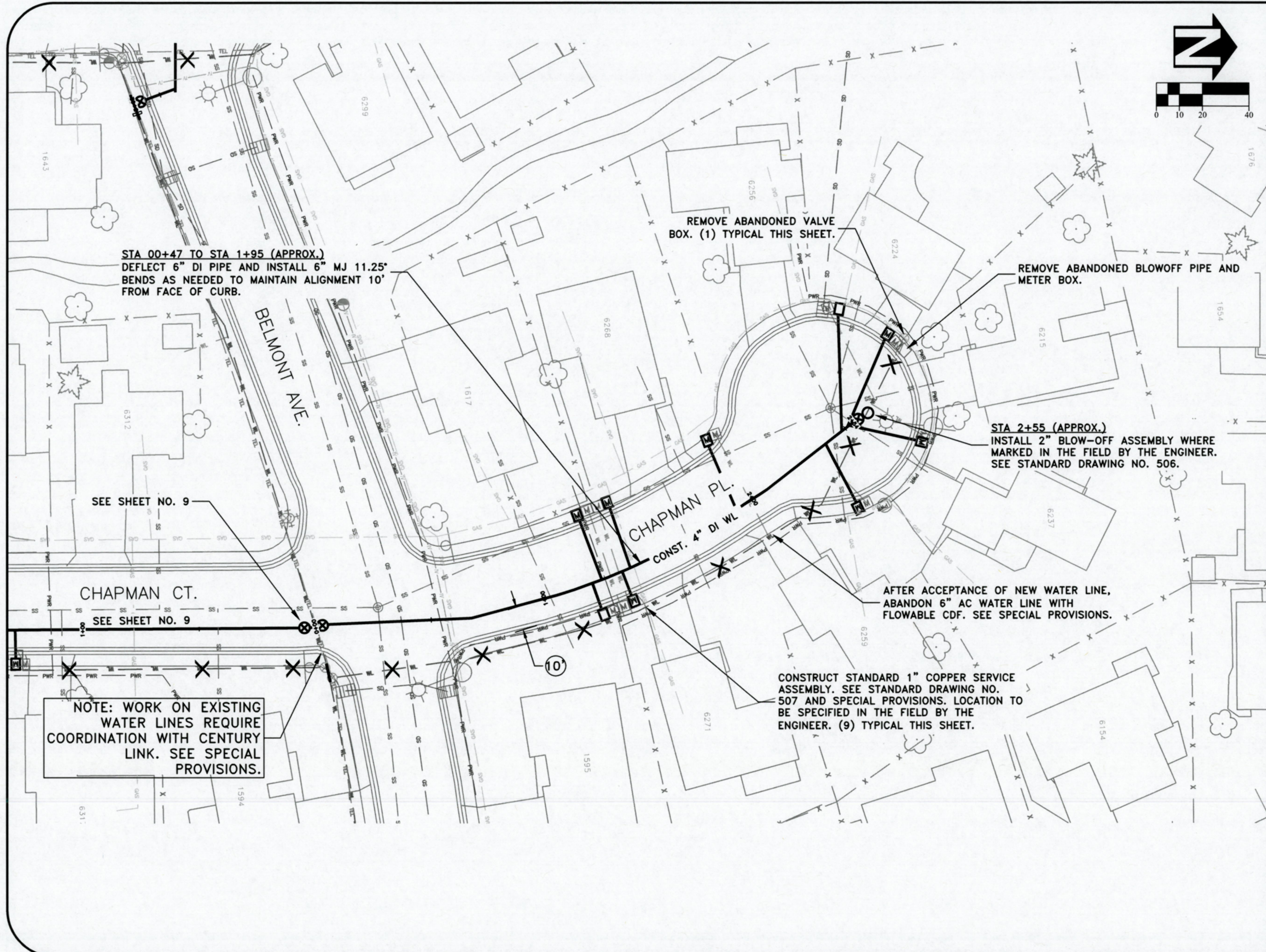


EXPIRATION DATE: 12/31/2019

SHEET NO. 9 OF 15

PROJECT NO: WL-19-01

FILE: BELMONT.DWG



STA 00+47 TO STA 1+95 (APPROX.)
 DEFLECT 6" DI PIPE AND INSTALL 6" MJ 11.25'
 BENDS AS NEEDED TO MAINTAIN ALIGNMENT 10'
 FROM FACE OF CURB.

REMOVE ABANDONED VALVE
 BOX. (1) TYPICAL THIS SHEET.

REMOVE ABANDONED BLOWOFF PIPE AND
 METER BOX.

STA 2+55 (APPROX.)
 INSTALL 2" BLOW-OFF ASSEMBLY WHERE
 MARKED IN THE FIELD BY THE ENGINEER.
 SEE STANDARD DRAWING NO. 506.

SEE SHEET NO. 9

CHAPMAN CT.
 SEE SHEET NO. 9

CHAPMAN PL.
 CONST. 4" DI WL


AFTER ACCEPTANCE OF NEW WATER LINE,
 ABANDON 6" AC WATER LINE WITH
 FLOWABLE CDF. SEE SPECIAL PROVISIONS.

NOTE: WORK ON EXISTING
 WATER LINES REQUIRE
 COORDINATION WITH CENTURY
 LINK. SEE SPECIAL
 PROVISIONS.


CONSTRUCT STANDARD 1" COPPER SERVICE
 ASSEMBLY. SEE STANDARD DRAWING NO.
 507 AND SPECIAL PROVISIONS. LOCATION TO
 BE SPECIFIED IN THE FIELD BY THE
 ENGINEER. (9) TYPICAL THIS SHEET.

DESIGNED: A. MONACO	REVISIONS
DRAWN: A. MONACO	NO: ---
CHECKED: C. CERKLEWSKI	BY: ---
DATE: 6/12/2019	DATE: ---

PUBLIC WORKS DEPARTMENT
ENGINEERING SERVICES



WL-19-01, BELMONT AREA WATER LINE REPLACEMENTS
CHAPMAN PLACE

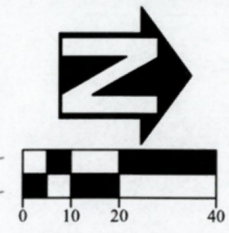


EXPIRATION DATE: 12/31/2019

SHEET NO. 10 OF 15

PROJECT NO: WL-19-01

FILE: BELMONT.DWG



DESIGNED: A. MONACO
 DRAWN: A. MONACO
 CHECKED: C. CERKLEWSKI
 DATE: 6/12/2019

REVISIONS	
NO.	BY:

**PUBLIC WORKS DEPARTMENT
 ENGINEERING SERVICES**



**WL-19-01, BELMONT AREA WATER LINE REPLACEMENTS
 PIEDMONT PLACE**

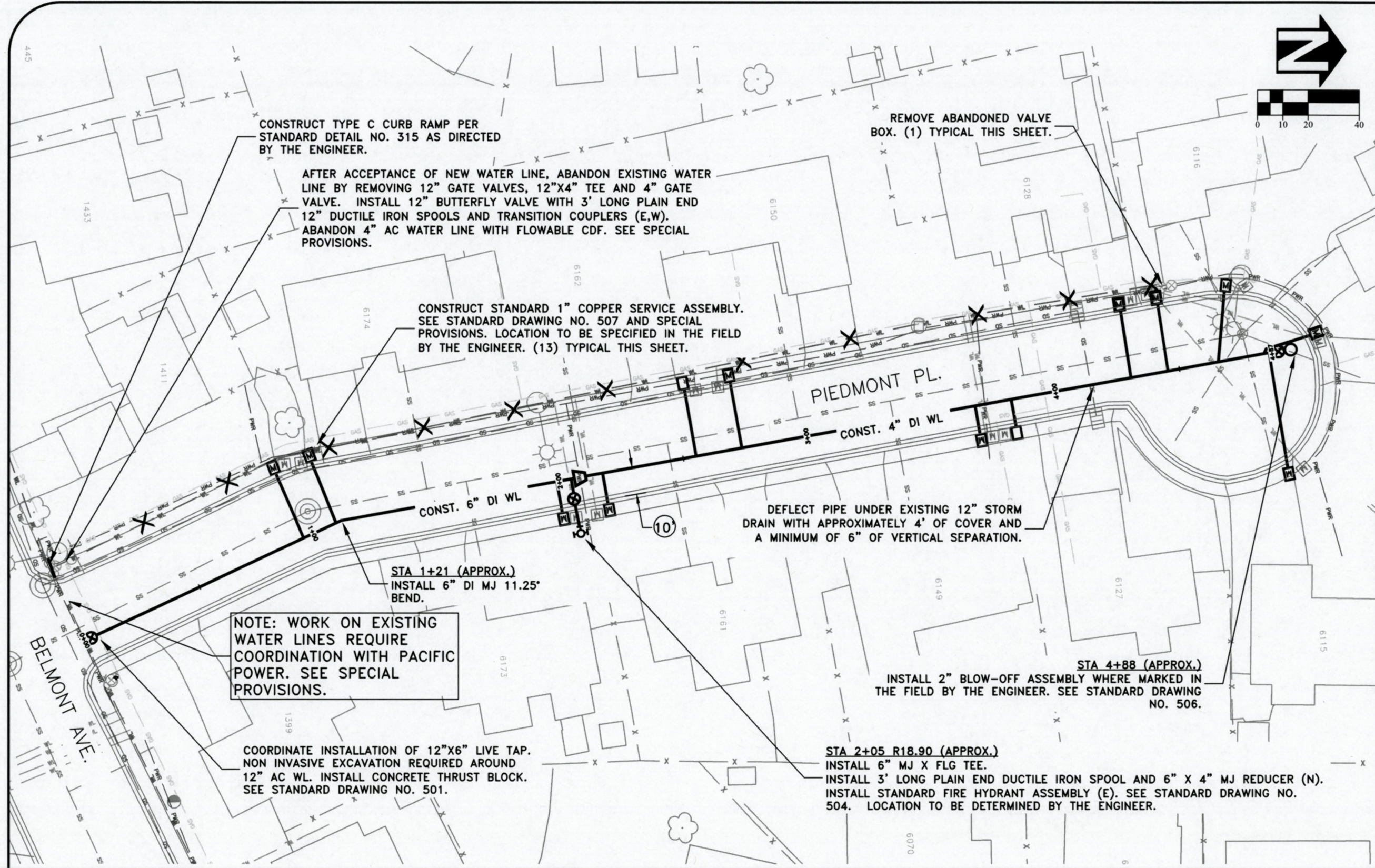


EXPIRATION DATE: 12/31/2019

SHEET NO. 11 OF 15

PROJECT NO: WL-19-01

FILE: BELMONT.DWG



CONSTRUCT TYPE C CURB RAMP PER STANDARD DETAIL NO. 315 AS DIRECTED BY THE ENGINEER.

AFTER ACCEPTANCE OF NEW WATER LINE, ABANDON EXISTING WATER LINE BY REMOVING 12" GATE VALVES, 12"x4" TEE AND 4" GATE VALVE. INSTALL 12" BUTTERFLY VALVE WITH 3' LONG PLAIN END 12" DUCTILE IRON SPOOLS AND TRANSITION COUPLERS (E,W). ABANDON 4" AC WATER LINE WITH FLOWABLE CDF. SEE SPECIAL PROVISIONS.

REMOVE ABANDONED VALVE BOX. (1) TYPICAL THIS SHEET.

CONSTRUCT STANDARD 1" COPPER SERVICE ASSEMBLY. SEE STANDARD DRAWING NO. 507 AND SPECIAL PROVISIONS. LOCATION TO BE SPECIFIED IN THE FIELD BY THE ENGINEER. (13) TYPICAL THIS SHEET.

DEFLECT PIPE UNDER EXISTING 12" STORM DRAIN WITH APPROXIMATELY 4' OF COVER AND A MINIMUM OF 6" OF VERTICAL SEPARATION.

STA 1+21 (APPROX.)
 INSTALL 6" DI MJ 11.25' BEND.

NOTE: WORK ON EXISTING WATER LINES REQUIRE COORDINATION WITH PACIFIC POWER. SEE SPECIAL PROVISIONS.

STA 4+88 (APPROX.)
 INSTALL 2" BLOW-OFF ASSEMBLY WHERE MARKED IN THE FIELD BY THE ENGINEER. SEE STANDARD DRAWING NO. 506.

COORDINATE INSTALLATION OF 12"x6" LIVE TAP. NON INVASIVE EXCAVATION REQUIRED AROUND 12" AC WL. INSTALL CONCRETE THRUST BLOCK. SEE STANDARD DRAWING NO. 501.

STA 2+05 R18.90 (APPROX.)
 INSTALL 6" MJ X FLG TEE.
 INSTALL 3' LONG PLAIN END DUCTILE IRON SPOOL AND 6" X 4" MJ REDUCER (N).
 INSTALL STANDARD FIRE HYDRANT ASSEMBLY (E). SEE STANDARD DRAWING NO. 504. LOCATION TO BE DETERMINED BY THE ENGINEER.

NOTE: ABANDONMENT CUT-INS WILL REQUIRE SHUTDOWNS FOR APPROXIMATELY 88 CUSTOMERS.

AFTER ACCEPTANCE OF NEW WATER LINE, ABANDON EXISTING WATER LINE BY REMOVING 12"x4" TEE AND VALVE BY CUTTING IN APPROXIMATELY 4' LONG PLAIN END 8" DUCTILE IRON SPOOL WITH TRANSITION COUPLERS. ABANDON 4" AC WATER LINE WITH FLOWABLE CDF. SEE SPECIAL PROVISIONS.

COORDINATE INSTALLATION OF 12"x4" LIVE TAP. NON INVASIVE EXCAVATION REQUIRED AROUND 12" AC WL. INSTALL CONCRETE THRUST BLOCK. SEE STANDARD DRAWING NO. 501.

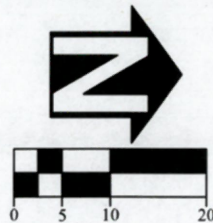
NOTE: WORK ON EXISTING WATER LINES REQUIRE COORDINATION WITH PACIFIC POWER. SEE SPECIAL PROVISIONS.

CONSTRUCT STANDARD 1" COPPER SERVICE ASSEMBLY. SEE STANDARD DRAWING NO. 507 AND SPECIAL PROVISIONS. LOCATION TO BE SPECIFIED IN THE FIELD BY THE ENGINEER. (10) TYPICAL THIS SHEET.

REMOVE ABANDONED METER BOX, VALVE BOX, AND BLOW-OFF PIPE. (1) TYPICAL THIS SHEET.

STA 1+32 (APPROX)
INSTALL 2" BLOW-OFF ASSEMBLY WHERE MARKED IN THE FIELD BY THE ENGINEER. SEE STANDARD DRAWING NO. 506.

NOTE: ABANDONMENT CUT-INS WILL REQUIRE SHUTDOWNS FOR APPROXIMATELY 83 CUSTOMERS.



DESIGNED: A. MONACO	REVISIONS
DRAWN: A. MONACO	NO: ---
CHECKED: C. CERKLEWSKI	BY: ---
DATE: 6/12/2019	DATE: ---

PUBLIC WORKS DEPARTMENT
ENGINEERING SERVICES

WL-19-01, BELMONT AREA WATER LINE REPLACEMENTS
BELMONT AVENUE



EXPIRATION DATE: 12/31/2019

SHEET NO. 12 OF 15

PROJECT NO: WL-19-01

FILE: BELMONT.DWG

CONSTRUCT TYPE C CURB RAMP PER STANDARD DETAIL NO. 315 AS DIRECTED BY THE ENGINEER.

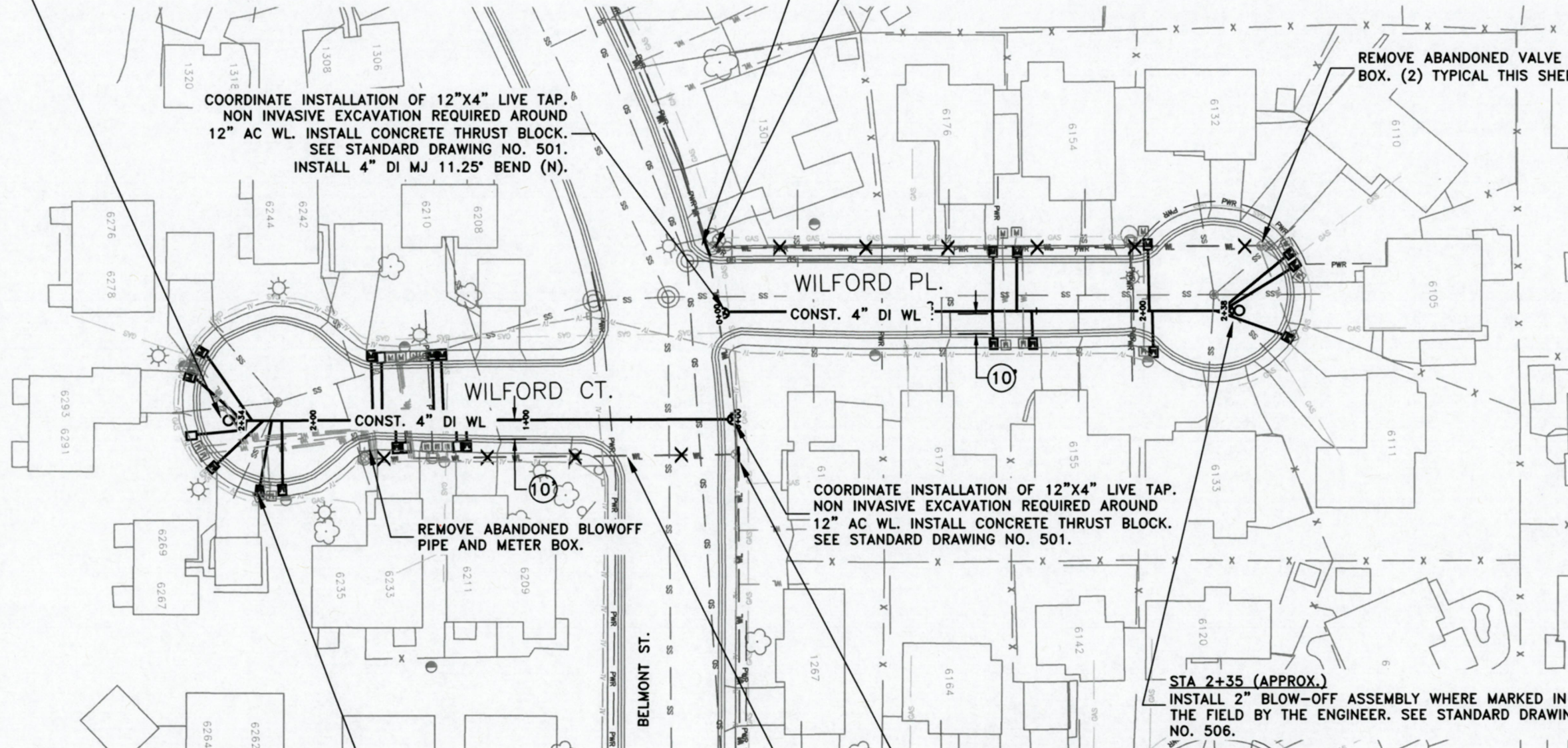
AFTER ACCEPTANCE OF NEW WATER LINE, ABANDON EXISTING WATER LINE BY REMOVING 12"x4" TEE AND VALVE BY CUTTING IN APPROXIMATELY 4' LONG PLAIN END 12" DUCTILE IRON SPOOL WITH TRANSITION COUPLERS. ABANDON 4" AC WATER LINE WITH FLOWABLE CDF. SEE SPECIAL PROVISIONS.



STA 3+39 (APPROX.)
INSTALL 2" BLOW-OFF ASSEMBLY WHERE MARKED IN THE FIELD BY THE ENGINEER. SEE STANDARD DRAWING NO. 506.

COORDINATE INSTALLATION OF 12"x4" LIVE TAP. NON INVASIVE EXCAVATION REQUIRED AROUND 12" AC WL. INSTALL CONCRETE THRUST BLOCK. SEE STANDARD DRAWING NO. 501. INSTALL 4" DI MJ 11.25' BEND (N).

REMOVE ABANDONED VALVE BOX. (2) TYPICAL THIS SHEET.



COORDINATE INSTALLATION OF 12"x4" LIVE TAP. NON INVASIVE EXCAVATION REQUIRED AROUND 12" AC WL. INSTALL CONCRETE THRUST BLOCK. SEE STANDARD DRAWING NO. 501.

STA 2+35 (APPROX.)
INSTALL 2" BLOW-OFF ASSEMBLY WHERE MARKED IN THE FIELD BY THE ENGINEER. SEE STANDARD DRAWING NO. 506.

AFTER ACCEPTANCE OF NEW WATER LINE, ABANDON EXISTING WATER LINE BY REMOVING 12"x6" TEE AND VALVE BY CUTTING IN APPROXIMATELY 4' LONG PLAIN END 12" DUCTILE IRON SPOOL WITH TRANSITION COUPLERS. ABANDON 4" AC WATER LINE WITH FLOWABLE CDF. SEE SPECIAL PROVISIONS.


AFTER ACCEPTANCE OF NEW WATER LINE, ABANDON 6" DI WATER LINE WITH FLOWABLE CDF. SEE SPECIAL PROVISIONS.

CONSTRUCT STANDARD 1" COPPER SERVICE ASSEMBLY. SEE STANDARD DRAWING NO. 507 AND SPECIAL PROVISIONS. LOCATION TO BE SPECIFIED IN THE FIELD BY THE ENGINEER. (25) TYPICAL THIS SHEET.

NOTE: ABANDONMENT CUT-INS WILL REQUIRE SHUTDOWNS FOR APPROXIMATELY 83 CUSTOMERS.

DESIGNED: A. MONACO	REVISIONS
DRAWN: A. MONACO	NO: ---
CHECKED: C. CERKLEWSKI	BY: ---
DATE: 6/12/2019	---

PUBLIC WORKS DEPARTMENT
ENGINEERING SERVICES

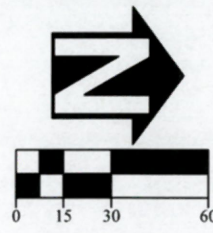


WL-19-01, BELMONT AREA WATER LINE REPLACEMENTS
WILFORD PLACE & WILFORD COURT

REGISTERED PROFESSIONAL
ENGINEER
56,471PE
Christopher L. Cerklewski
OREGON
JULY 9, 2002
CHRISTOPHER L. CERKLEWSKI

EXPIRATION DATE: 12/31/2019

SHEET NO. 13 OF 15
PROJECT NO: WL-19-01
FILE: BELMONT.DWG



DESIGNED: A. MONACO	REVISIONS
DRAWN: A. MONACO	NO: ---
CHECKED: C. CERKLEWSKI	BY: ---
DATE: 6/12/2019	DATE: ---

**PUBLIC WORKS DEPARTMENT
ENGINEERING SERVICES**

**WL-19-01, BELMONT AREA WATER LINE REPLACEMENTS
WARWICK PLACE & WARWICK COURT**



EXPIRATION DATE: 12/31/2019

SHEET NO. 14 OF 15

PROJECT NO: WL-19-01

FILE: BELMONT.DWG

CONSTRUCT TYPE C CURB RAMP PER STANDARD DETAIL NO. 315 AS DIRECTED BY THE ENGINEER.

AFTER ACCEPTANCE OF NEW WATER LINE, ABANDON EXISTING WATER LINE BY REMOVING 12"x4" TEE AND VALVE BY CUTTING IN APPROXIMATELY 4' LONG PLAIN END 12" DUCTILE IRON SPOOL WITH TRANSITION COUPLERS. ABANDON 4" AC WATER LINE WITH FLOWABLE CDF. SEE SPECIAL PROVISIONS.

CONSTRUCT STANDARD 1" COPPER SERVICE ASSEMBLY. SEE STANDARD DRAWING NO. 507 AND SPECIAL PROVISIONS. LOCATION TO BE SPECIFIED IN THE FIELD BY THE ENGINEER. (25) TYPICAL THIS SHEET.

AFTER ACCEPTANCE OF NEW WATER LINE, ABANDON 4" DI WATER LINE WITH FLOWABLE CDF. SEE SPECIAL PROVISIONS.

COORDINATE INSTALLATION OF 12"x4" LIVE TAP. NON INVASIVE EXCAVATION REQUIRED AROUND 12" AC WL. INSTALL CONCRETE THRUST BLOCK. SEE STANDARD DRAWING NO. 501.

STA 2+28 (APPROX.)
INSTALL 2" BLOW-OFF ASSEMBLY WHERE MARKED IN THE FIELD BY THE ENGINEER. SEE STANDARD DRAWING NO. 506.

AFTER ACCEPTANCE OF NEW WATER LINE, ABANDON EXISTING WATER LINE BY REMOVING 12"x6" TEE AND VALVE BY CUTTING IN APPROXIMATELY 4' LONG PLAIN END 12" DUCTILE IRON SPOOL WITH TRANSITION COUPLERS. ABANDON 4" AC WATER LINE WITH FLOWABLE CDF. SEE SPECIAL PROVISIONS.

STA 2+28 (APPROX.)
INSTALL 2" BLOW-OFF ASSEMBLY WHERE MARKED IN THE FIELD BY THE ENGINEER. SEE STANDARD DRAWING NO. 506.

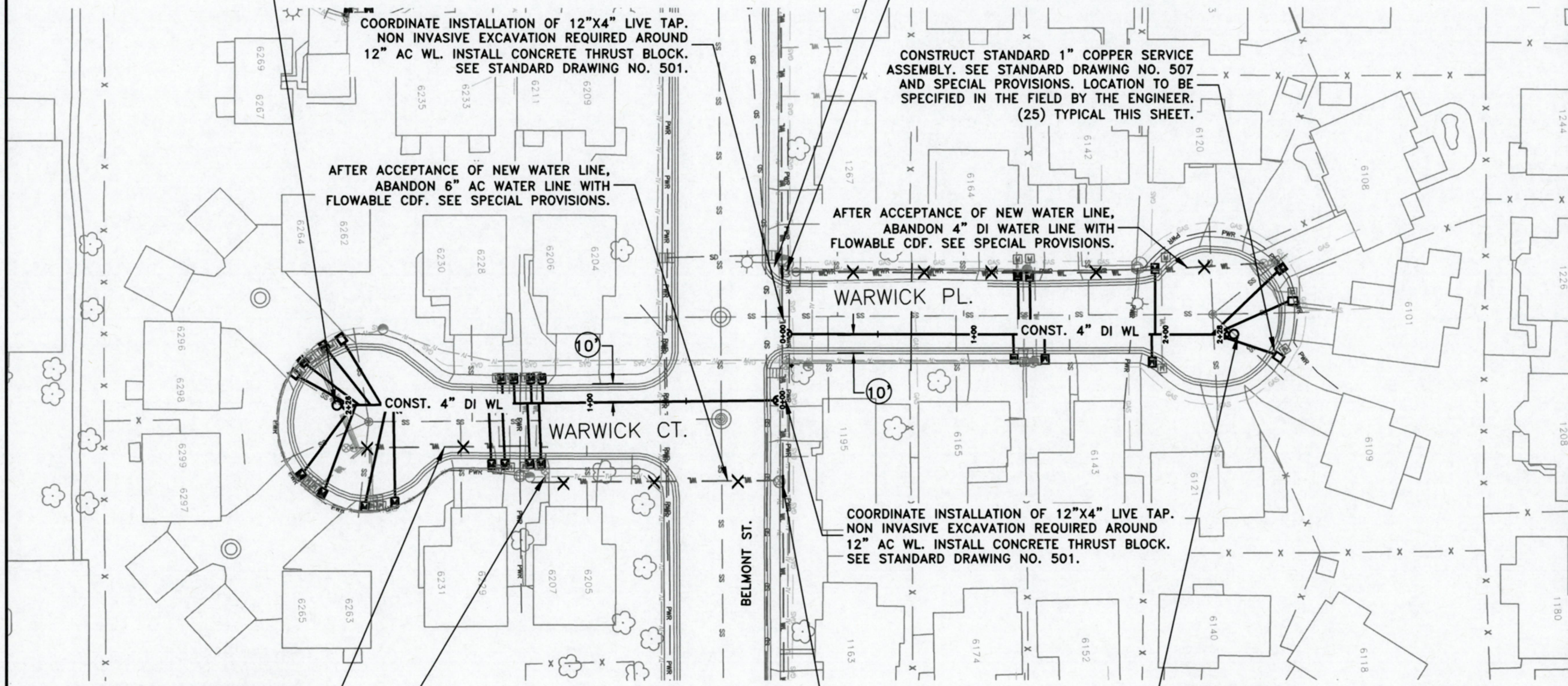
COORDINATE INSTALLATION OF 12"x4" LIVE TAP. NON INVASIVE EXCAVATION REQUIRED AROUND 12" AC WL. INSTALL CONCRETE THRUST BLOCK. SEE STANDARD DRAWING NO. 501.

AFTER ACCEPTANCE OF NEW WATER LINE, ABANDON 6" AC WATER LINE WITH FLOWABLE CDF. SEE SPECIAL PROVISIONS.

AFTER ACCEPTANCE OF NEW WATER LINE, ABANDON 6" DI WATER LINE WITH FLOWABLE CDF. SEE SPECIAL PROVISIONS.

REMOVE ABANDONED VALVE BOX. (3) TYPICAL THIS SHEET.

NOTE: ABANDONMENT CUT-INS WILL REQUIRE SHUTDOWNS FOR APPROXIMATELY 83 CUSTOMERS.



CONSTRUCT STANDARD 1" COPPER SERVICE ASSEMBLY. SEE STANDARD DRAWING NO. 507 AND SPECIAL PROVISIONS. LOCATION TO BE SPECIFIED IN THE FIELD BY THE ENGINEER. (26) TYPICAL THIS SHEET.

STA 2+25 (APPROX.)
INSTALL 2" BLOW-OFF ASSEMBLY WHERE MARKED IN THE FIELD BY THE ENGINEER. SEE STANDARD DRAWING NO. 506.

COORDINATE INSTALLATION OF 12"x4" LIVE TAP. NON INVASIVE EXCAVATION REQUIRED AROUND 12" AC WL. INSTALL CONCRETE THRUST BLOCK. SEE STANDARD DRAWING NO. 501.

AFTER ACCEPTANCE OF NEW WATER LINE, ABANDON 4" AC & 8" DI WATER LINE WITH FLOWABLE CDF. SEE SPECIAL PROVISIONS.

STA 0+67 R15.73 (APPROX.)
INSTALL 6" MJ X FLG TEE. INSTALL STANDARD FIRE HYDRANT ASSEMBLY (W). SEE STANDARD DRAWING NO. 504. LOCATION TO BE DETERMINED BY THE ENGINEER.

CONST. 4" DI WL
WELDON CT.

AFTER ACCEPTANCE OF NEW WATER LINE, ABANDON 4" AC WATER LINE WITH FLOWABLE CDF. SEE SPECIAL PROVISIONS.

STA 0+67 (APPROX.)
INSTALL 3' LONG PLAIN END DUCTILE IRON SPOOL AND 6" X 4" MJ REDUCER (S).

REMOVE ABANDONED FIRE HYDRANT AND LEAVE ONSITE TO BE RECLAIMED BY CITY CREWS.

CONST. 6" DI WL

CONSTRUCT ADA COMPLIANT TYPE C CURB RAMP PER STANDARD DETAIL NO. 315 AS APPROVED BY ENGINEER IN THE FIELD.

AFTER ACCEPTANCE OF NEW WATER LINE, ABANDON EXISTING WATER LINE BY REMOVING 12"x4" TEE AND VALVE BY CUTTING IN APPROXIMATELY 4' LONG PLAIN END 12" DUCTILE IRON SPOOL WITH TRANSITION COUPLERS. ABANDON 4" AC WATER LINE WITH FLOWABLE CDF. SEE SPECIAL PROVISIONS.

AFTER ACCEPTANCE OF NEW WATER LINE, ABANDON 4" AC WATER LINE WITH FLOWABLE CDF. SEE SPECIAL PROVISIONS.

REMOVE ABANDONED VALVE BOX. (4) TYPICAL THIS SHEET.

WELDON PL.

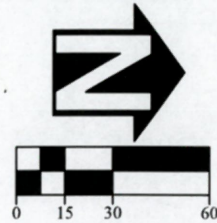
CONST. 4" DI WL

COORDINATE INSTALLATION OF 12"x6" LIVE TAP. NON INVASIVE EXCAVATION REQUIRED AROUND 12" AC WL. INSTALL CONCRETE THRUST BLOCK. SEE STANDARD DRAWING NO. 501.

STA 2+44 (APPROX.)
INSTALL 2" BLOW-OFF ASSEMBLY WHERE MARKED IN THE FIELD BY THE ENGINEER. SEE STANDARD DRAWING NO. 506.


AFTER ACCEPTANCE OF NEW WATER LINE, ABANDON EXISTING WATER LINE BY REMOVING 12"x8" TEE AND 12"x4" TEE AND VALVES BY CUTTING IN APPROXIMATELY 8' LONG PLAIN END 12" DUCTILE IRON SPOOL WITH TRANSITION COUPLERS. ABANDON 6" DI WATER LINE AND 4" AC WATER LINE WITH FLOWABLE CDF. SEE SPECIAL PROVISIONS.

NOTE: ABANDONMENT CUT-INS WILL REQUIRE SHUTDOWNS FOR APPROXIMATELY 162 CUSTOMERS.



DESIGNED: A. MONACO	REVISIONS
DRAWN: A. MONACO	NO: ---
CHECKED: C. CERKLEWSKI	BY: ---
DATE: 6/12/2019	NO: ---
DATE: ---	BY: ---
DATE: ---	NO: ---
DATE: ---	BY: ---

PUBLIC WORKS DEPARTMENT
ENGINEERING SERVICES



WL-19-01, BELMONT AREA WATER LINE REPLACEMENTS
WELDON PLACE & WELDON COURT

REGISTERED PROFESSIONAL
ENGINEER
56,471PE
Christopher L. Chlenko
OREGON
JULY 9, 2002
CHRISTOPHER L. CERKLEWSKI

EXPIRATION DATE: 12/31/2019
SHEET NO. 15 OF 15
PROJECT NO: WL-19-01
FILE: BELMONT.DWG