

# CITY OF ALBANY

## WL-20-03, GIBSON HILL ROAD AND PARK TERRACE WATER LINE

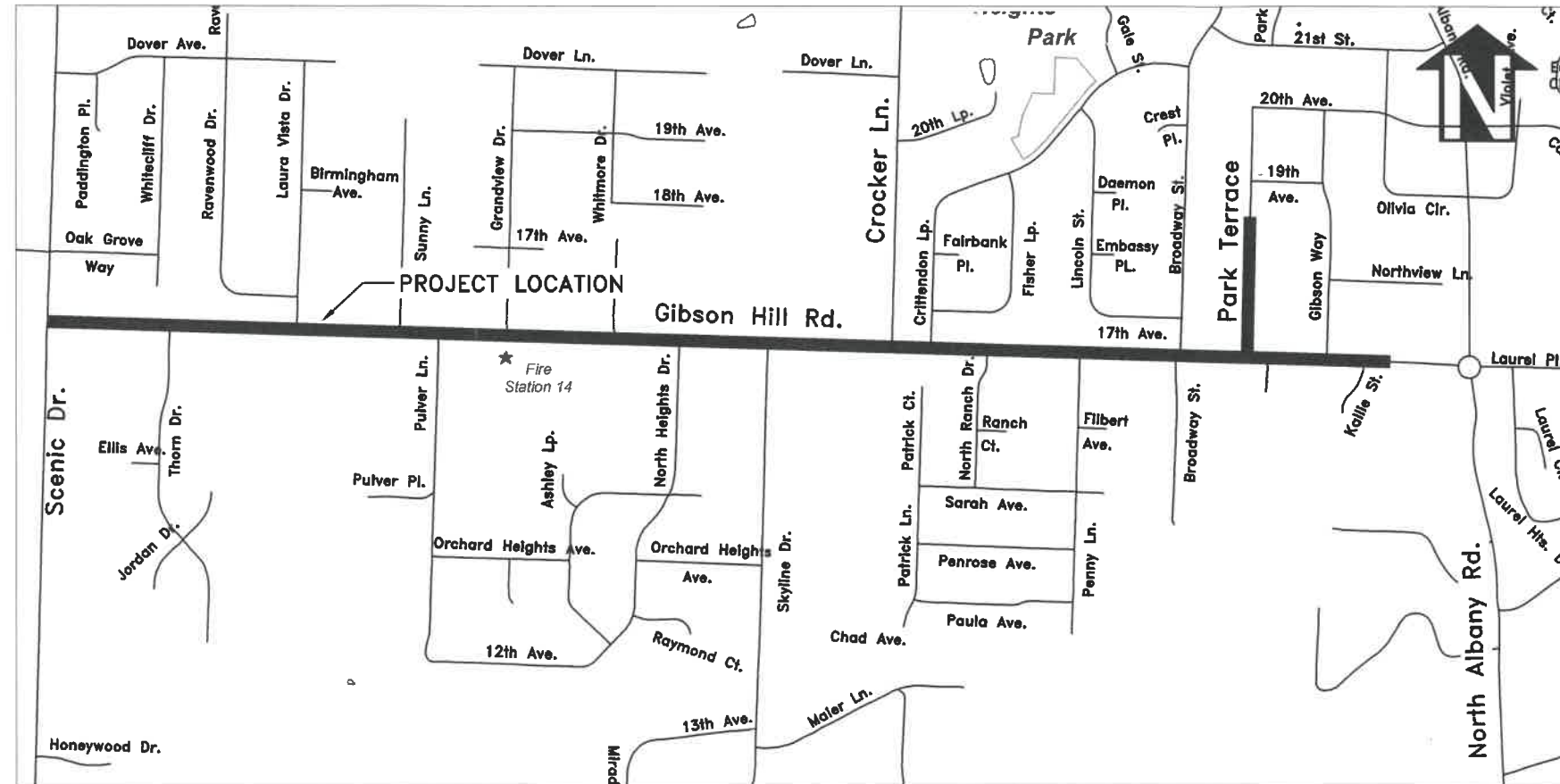
### SHEET INDEX

SHEET NO. 1	COVER & GENERAL NOTES
SHEET NO. 2 TO 8	GIBSON HILL ROAD CORROSION REPAIRS
SHEET NO. 9 & 10	PARK TERRACE WATER LINE

NOTE: NEW BOLTS SHALL BE OF DOMESTIC MANUFACTURE. SEE SPECIAL PROVISIONS.

### LEGEND

	EXISTING WATER SERVICE		EXISTING POWER POLE
	RECONNECT EXISTING METER		EXISTING STORM MANHOLE
	INSTALL NEW SERVICE WITH NO METER		NEW CURB INLET
	REPLACE EXISTING METER WITH NEW METER		NEW CATCH BASIN
	AIR RELEASE VALVE		NEW CURB INLET
	EXISTING WATER VALVE		NEW CATCH BASIN
	NEW WATER VALVE		EXISTING STREET LIGHT
	EXISTING WATER LINE		EXISTING TRAFFIC SIGN
	EXISTING GAS LINE		NEW TRAFFIC SIGN
	EXISTING STORM LINE		EXISTING HYDRANT
	EXISTING SANITARY SEWER LINE		NEW HYDRANT
	EXISTING QLN DUCT		REDUCER
	EXISTING POWER LINES		
	NEW WATER LINE		
	NEW STORM LINE		
	NEW STORM DRAIN MAINLINE CLEANOUT		
	NEW STORM DRAIN MANHOLE		



Vicinity Map  
Not to Scale

### GENERAL NOTES

- ALL CONSTRUCTION SHALL CONFORM TO THE CITY OF ALBANY STANDARD CONSTRUCTION SPECIFICATIONS AND ASSOCIATED STANDARD DRAWINGS. THE CURRENT VERSION OF THE CITY OF ALBANY STANDARD CONSTRUCTION SPECIFICATIONS CAN BE FOUND ON THE CITY'S WEBSITE AT [WWW.CITYOFALBANY.NET](http://WWW.CITYOFALBANY.NET).
- UTILITIES SHOWN ARE FOR REFERENCE ONLY. FOR A FIELD LOCATE, CALL THE UTILITIES NOTIFICATIONS CENTER AT 1-800-332-2344.
- OPERATING ACCESS FOR CITY MAINTENANCE PERSONNEL TO EXISTING AND NEW WATER VALVES AND MANHOLES SHALL BE CONTINUOUSLY MAINTAINED BY THE CONTRACTOR DURING ALL CONSTRUCTION ACTIVITIES.
- CONTRACTOR SHALL VERIFY ALL EXISTING PIPE ELEVATIONS, PIPE DIAMETERS, AND PIPE MATERIALS AT CONNECTION AND ABANDONMENT LOCATIONS PRIOR TO CONSTRUCTION. ANY DISCREPANCIES SHALL BE REPORTED TO ENGINEER PRIOR TO BEGINNING WORK.
- ATTENTION: OREGON LAW REQUIRES YOU TO FOLLOW RULES ADOPTED BY THE OREGON UTILITY NOTIFICATION CENTER. THOSE RULES ARE SET FORTH IN OAR 952-001-0010 THROUGH OAR 952-001-0090. YOU MAY OBTAIN COPIES OF THE RULES BY CALLING THE CENTER. (NOTE: THE TELEPHONE NUMBER FOR THE OREGON UTILITY NOTIFICATION CENTER IS (503) 232-1987).
- CONTRACTOR SHALL BE RESPONSIBLE FOR PROPER INSTALLATION AND MAINTENANCE OF ALL EROSION PREVENTION SEDIMENT CONTROL (EPSC) MEASURES IN ACCORDANCE WITH LOCAL, STATE, AND FEDERAL REGULATIONS UNTIL ALL CONSTRUCTION IS COMPLETED AND APPROVED BY THE CITY OF ALBANY, AND VEGETATION/LANDSCAPING IS ESTABLISHED. FOR GUIDANCE, REFER TO THE CITY OF ALBANY EPSC MANUAL WHICH CAN BE FOUND AT [www.cityofalbany.net](http://www.cityofalbany.net).
- THE CONTRACTOR SHALL EXPECT A HIGH WATER TABLE WITHIN THE PROJECT AREA DUE TO THE PRESENCE OF ROADSIDE DITCHES AND UNDERGROUND SPRINGS. NO ADDITIONAL COMPENSATION WILL BE MADE FOR MEASURES REQUIRED TO ACCOMMODATE GROUNDWATER.

DESIGNED: C. CERKLEWSKI  
DRAWN: C. CERKLEWSKI  
CHECKED: S. BELCASTRO  
DATE: 1/9/2020

REVISIONS	
NO.	BY:

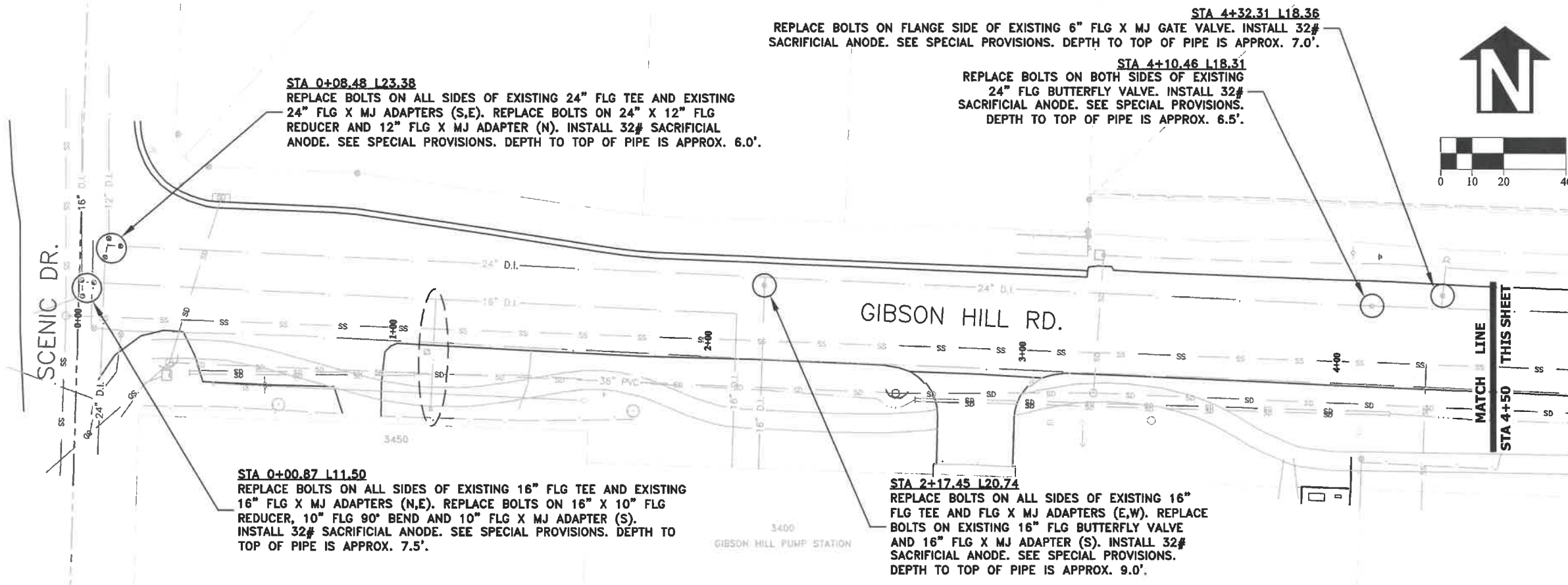
PUBLIC WORKS DEPARTMENT  
ENGINEERING SERVICES



EXPIRATION DATE: 12/31/2021

SHEET NO. 1 OF 10  
PROJECT NO: WL-20-03  
FILE: COVER.DWG

WL-20-03, GIBSON HILL ROAD AND PARK TERRACE WATER LINE



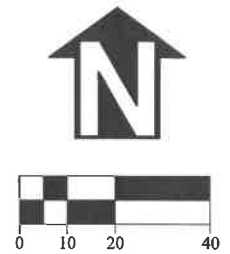
**STA 0+08.48 L23.38**  
 REPLACE BOLTS ON ALL SIDES OF EXISTING 24" FLG TEE AND EXISTING 24" FLG X MJ ADAPTERS (S,E). REPLACE BOLTS ON 24" X 12" FLG REDUCER AND 12" FLG X MJ ADAPTER (N). INSTALL 32# SACRIFICIAL ANODE. SEE SPECIAL PROVISIONS. DEPTH TO TOP OF PIPE IS APPROX. 6.0'.

**STA 4+32.31 L18.36**  
 REPLACE BOLTS ON FLANGE SIDE OF EXISTING 6" FLG X MJ GATE VALVE. INSTALL 32# SACRIFICIAL ANODE. SEE SPECIAL PROVISIONS. DEPTH TO TOP OF PIPE IS APPROX. 7.0'.

**STA 4+10.46 L18.31**  
 REPLACE BOLTS ON BOTH SIDES OF EXISTING 24" FLG BUTTERFLY VALVE. INSTALL 32# SACRIFICIAL ANODE. SEE SPECIAL PROVISIONS. DEPTH TO TOP OF PIPE IS APPROX. 6.5'.

**STA 0+00.87 L11.50**  
 REPLACE BOLTS ON ALL SIDES OF EXISTING 16" FLG TEE AND EXISTING 16" FLG X MJ ADAPTERS (N,E). REPLACE BOLTS ON 16" X 10" FLG REDUCER, 10" FLG 90° BEND AND 10" FLG X MJ ADAPTER (S). INSTALL 32# SACRIFICIAL ANODE. SEE SPECIAL PROVISIONS. DEPTH TO TOP OF PIPE IS APPROX. 7.5'.

**STA 2+17.45 L20.74**  
 REPLACE BOLTS ON ALL SIDES OF EXISTING 16" FLG TEE AND FLG X MJ ADAPTERS (E,W). REPLACE BOLTS ON EXISTING 16" FLG BUTTERFLY VALVE AND 16" FLG X MJ ADAPTER (S). INSTALL 32# SACRIFICIAL ANODE. SEE SPECIAL PROVISIONS. DEPTH TO TOP OF PIPE IS APPROX. 9.0'.



**STA 5+85.85 L18.72**  
 REPLACE BOLTS ON ALL SIDES OF EXISTING 24" X 8" FLG TEE. REPLACE BOLTS ON FLANGE SIDE OF 24" FLG X MJ ADAPTER ON WEST SIDE OF 24" FLG BUTTERFLY VALVE. INSTALL 32# SACRIFICIAL ANODE. SEE SPECIAL PROVISIONS. DEPTH TO TOP OF PIPE IS APPROX. 8.5'.

NOTE: NEW BOLTS SHALL BE OF DOMESTIC MANUFACTURE. SEE SPECIAL PROVISIONS.

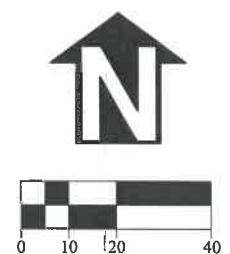
**STA 9+31.90 L19.53**  
 REPLACE BOLTS ON FLANGE SIDE OF EXISTING 6" FLG X MJ GATE VALVE. INSTALL 32# SACRIFICIAL ANODE. SEE SPECIAL PROVISIONS. DEPTH TO TOP OF PIPE IS APPROX. 9.3'.

**STA 9+36.62 R1.13**  
 CORE DRILL EXISTING MANHOLE (S) FOR NEW 8" PVC SEWER  
 EX. RIM=289.94  
 NEW IE 8" PVC (S)=279.24  
 EX. IE 8" PVC (W)=279.04

INSTALL 32# SACRIFICIAL ANODE ON EXISTING WATER SERVICE. SEE SPECIAL PROVISIONS. (4) TYPICAL THIS SHEET.


**STA 9+36.62 R25.76**  
 CONSTRUCT STANDARD PRECAST SEWER MANHOLE. SEE STANDARD DRAWING NO. 401.  
 RIM=289.80±  
 IE 8" PVC (N)=279.49

NOTE: ALL SEWER WORK IS PART OF SCHEDULE C. SEE SPECIAL PROVISIONS.



DESIGNED: C. CERKLEWSKI	REVISIONS	BY:
DRAWN: C. CERKLEWSKI	NO:	---
CHECKED: S. BELCASTRO	DATE:	---
DATE: 1/9/2020		

**PUBLIC WORKS DEPARTMENT**  
**ENGINEERING SERVICES**

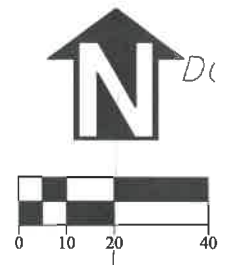


**WL-20-03, GIBSON HILL ROAD AND PARK TERRACE WATER LINE**  
**GIBSON HILL RD. CORROSION REPAIRS**

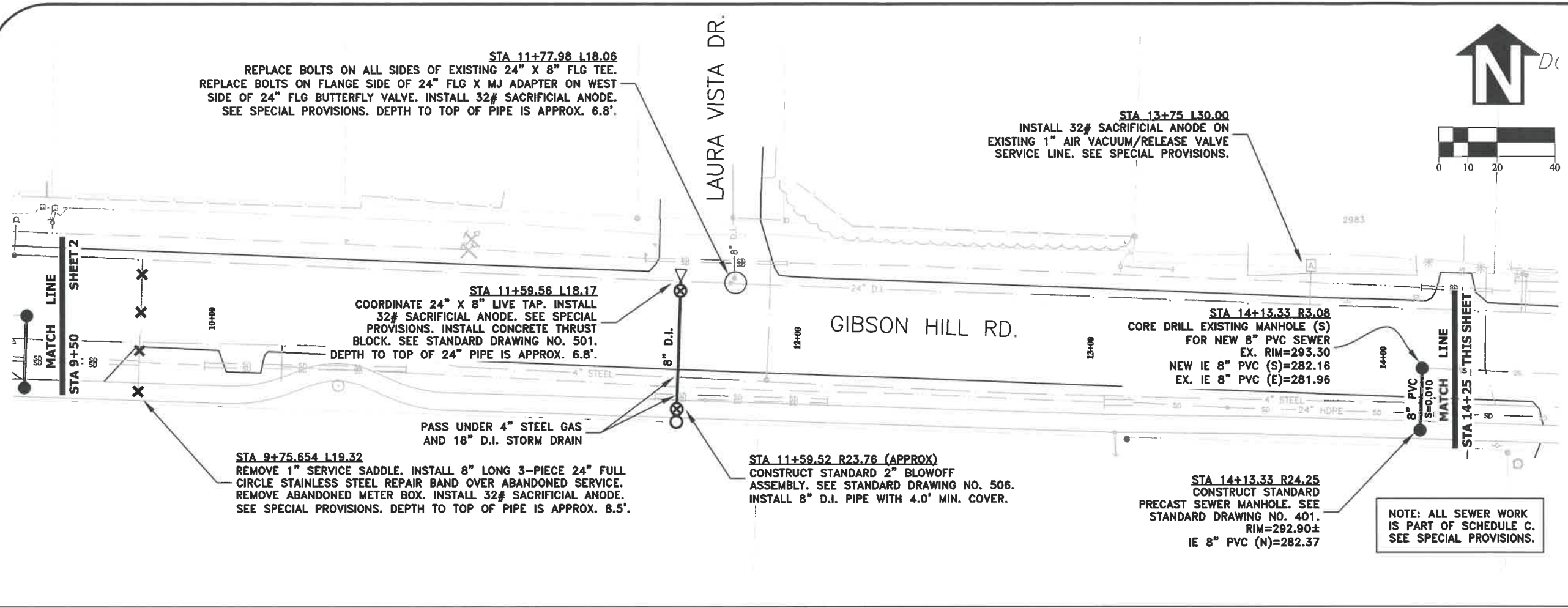
**REGISTERED PROFESSIONAL ENGINEER**  
 56,471PE  
*Christopher L. Chlench*  
 OREGON  
 JULY 9, 2002  
**CHRISTOPHER L. CERKLEWSKI**

EXPIRATION DATE: 12/31/2021

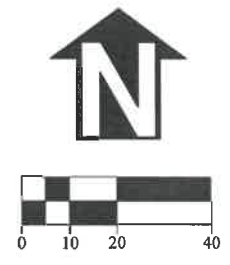
SHEET NO. 2 OF 10  
 PROJECT NO: WL-20-03  
 FILE: BASE.DWG




DESIGNED: C. CERKLEWSKI	REVISIONS	BY:
DRAWN: C. CERKLEWSKI	NO:	
CHECKED: S. BELCASTRO	DATE:	
DATE: 1/9/2020		



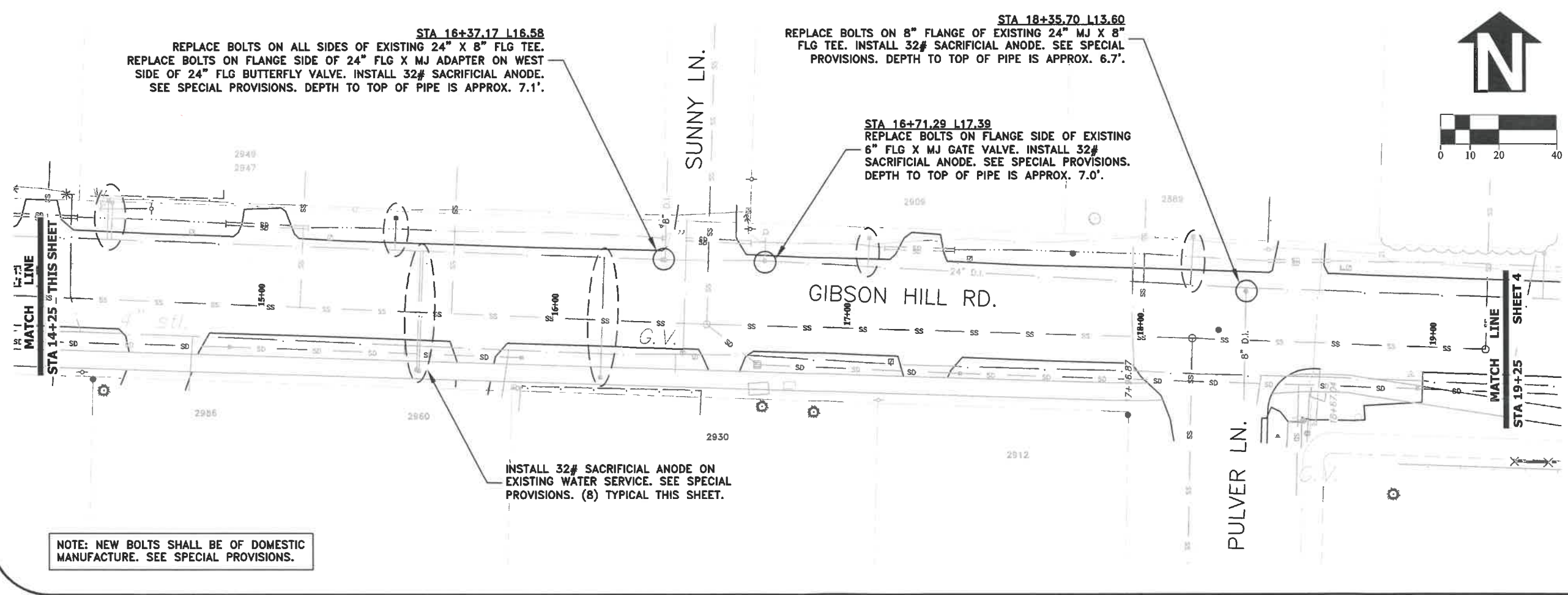
NOTE: ALL SEWER WORK IS PART OF SCHEDULE C. SEE SPECIAL PROVISIONS.



**PUBLIC WORKS DEPARTMENT**  
**ENGINEERING SERVICES**



**WL-20-03, GIBSON HILL ROAD AND PARK TERRACE WATER LINE**  
**GIBSON HILL RD. CORROSION REPAIRS**



NOTE: NEW BOLTS SHALL BE OF DOMESTIC MANUFACTURE. SEE SPECIAL PROVISIONS.

**REGISTERED PROFESSIONAL ENGINEER**  
56,471PE  
*Christopher L. Cerkowski*  
OREGON  
JULY 9, 2002  
**CHRISTOPHER L. CERKLEWSKI**

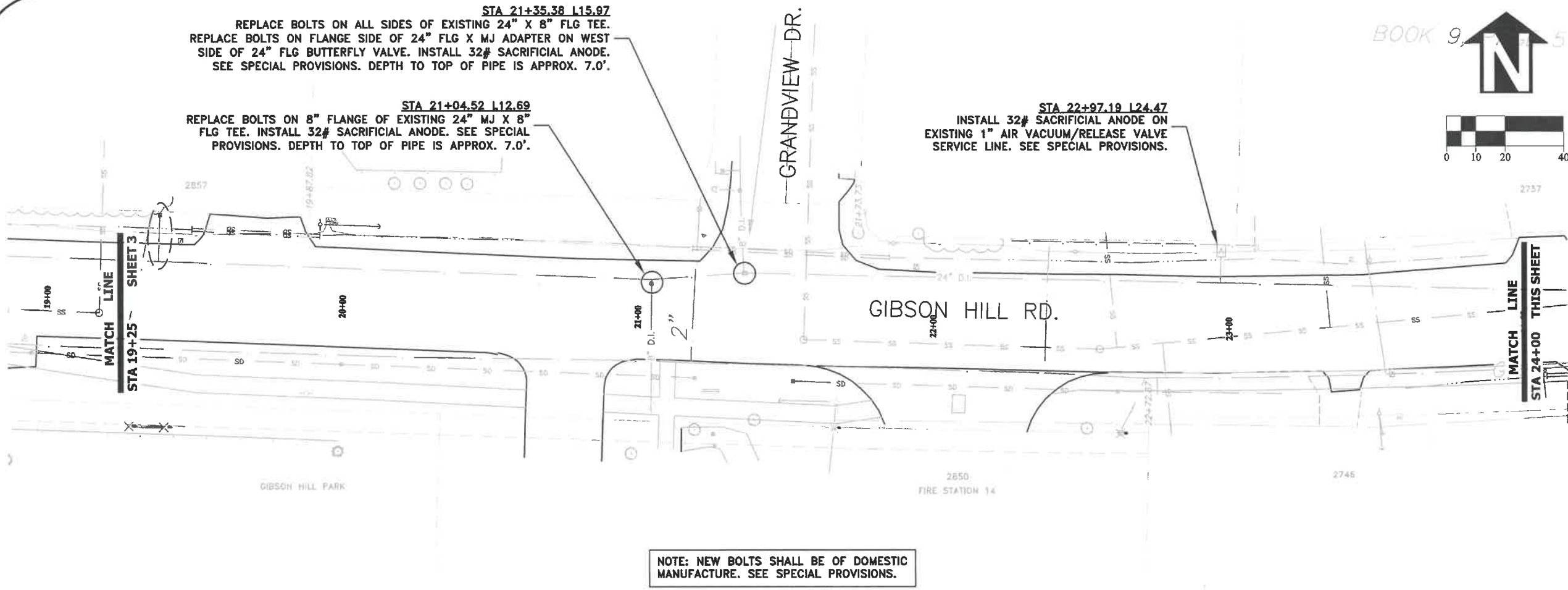
EXPIRATION DATE: 12/31/2021

SHEET NO. 3 OF 10  
PROJECT NO: WL-20-03  
FILE: BASE.DWG

**STA 21+35.38 L15.97**  
 REPLACE BOLTS ON ALL SIDES OF EXISTING 24" X 8" FLG TEE.  
 REPLACE BOLTS ON FLANGE SIDE OF 24" FLG X MJ ADAPTER ON WEST  
 SIDE OF 24" FLG BUTTERFLY VALVE. INSTALL 32# SACRIFICIAL ANODE.  
 SEE SPECIAL PROVISIONS. DEPTH TO TOP OF PIPE IS APPROX. 7.0'.

**STA 21+04.52 L12.69**  
 REPLACE BOLTS ON 8" FLANGE OF EXISTING 24" MJ X 8"  
 FLG TEE. INSTALL 32# SACRIFICIAL ANODE. SEE SPECIAL  
 PROVISIONS. DEPTH TO TOP OF PIPE IS APPROX. 7.0'.

**STA 22+97.19 L24.47**  
 INSTALL 32# SACRIFICIAL ANODE ON  
 EXISTING 1" AIR VACUUM/RELEASE VALVE  
 SERVICE LINE. SEE SPECIAL PROVISIONS.



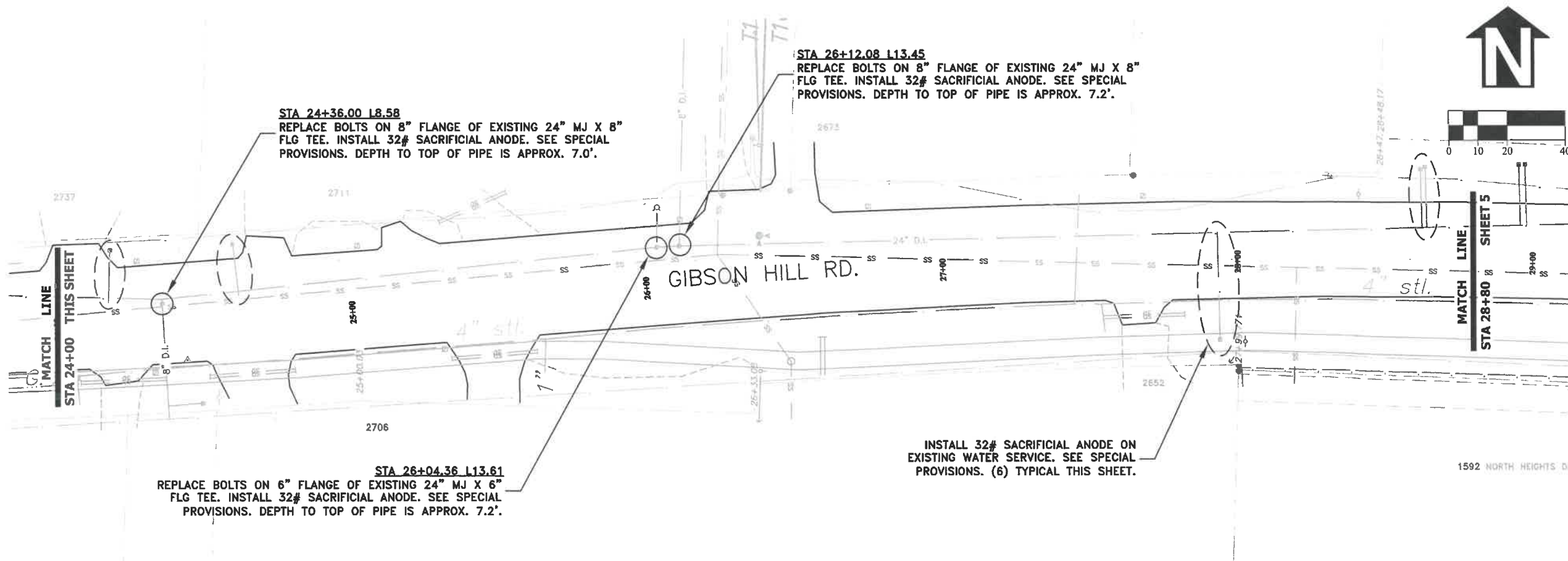
NOTE: NEW BOLTS SHALL BE OF DOMESTIC  
 MANUFACTURE. SEE SPECIAL PROVISIONS.

**STA 24+36.00 L8.58**  
 REPLACE BOLTS ON 8" FLANGE OF EXISTING 24" MJ X 8"  
 FLG TEE. INSTALL 32# SACRIFICIAL ANODE. SEE SPECIAL  
 PROVISIONS. DEPTH TO TOP OF PIPE IS APPROX. 7.0'.

**STA 26+12.08 L13.45**  
 REPLACE BOLTS ON 8" FLANGE OF EXISTING 24" MJ X 8"  
 FLG TEE. INSTALL 32# SACRIFICIAL ANODE. SEE SPECIAL  
 PROVISIONS. DEPTH TO TOP OF PIPE IS APPROX. 7.2'.

**STA 26+04.36 L13.61**  
 REPLACE BOLTS ON 6" FLANGE OF EXISTING 24" MJ X 6"  
 FLG TEE. INSTALL 32# SACRIFICIAL ANODE. SEE SPECIAL  
 PROVISIONS. DEPTH TO TOP OF PIPE IS APPROX. 7.2'.

INSTALL 32# SACRIFICIAL ANODE ON  
 EXISTING WATER SERVICE. SEE SPECIAL  
 PROVISIONS. (6) TYPICAL THIS SHEET.

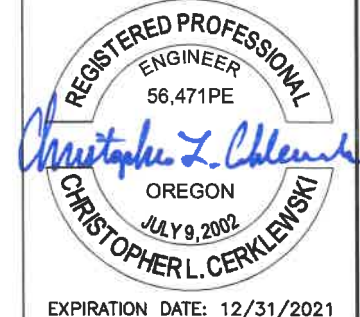


DESIGNED: C. CERKLEWSKI  
 DRAWN: C. CERKLEWSKI  
 CHECKED: S. BELCASTRO  
 DATE: 1/9/2020

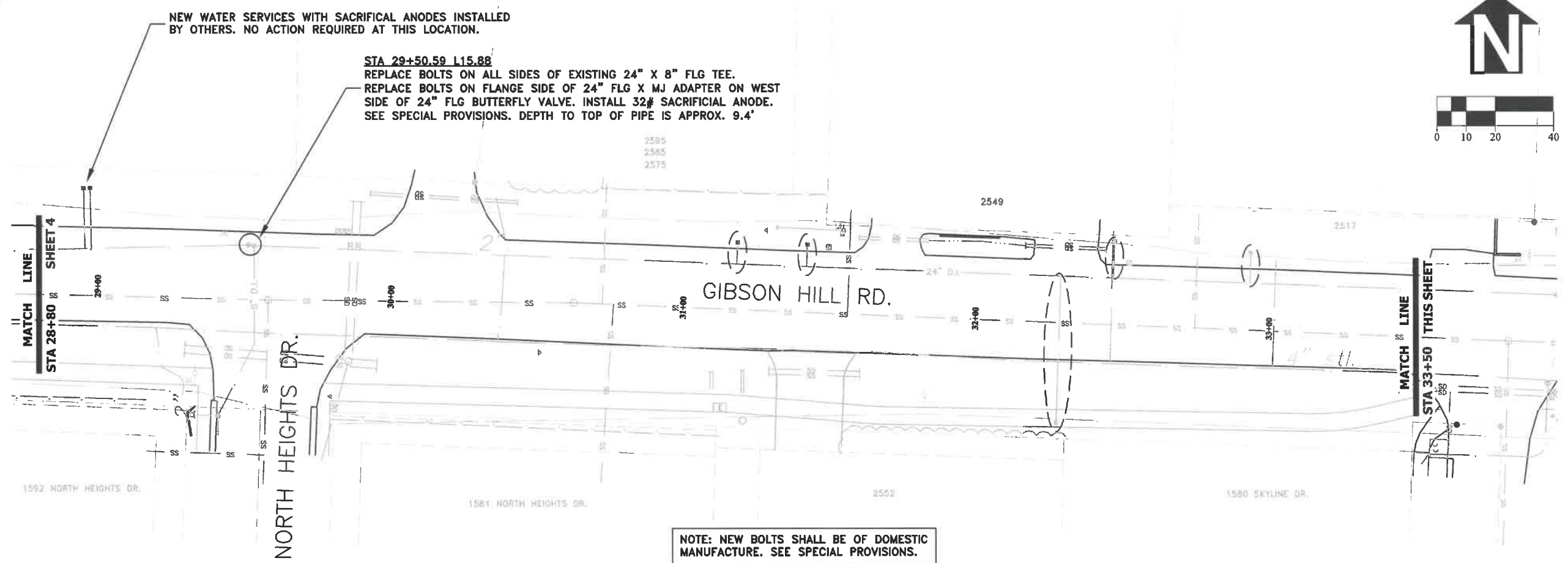
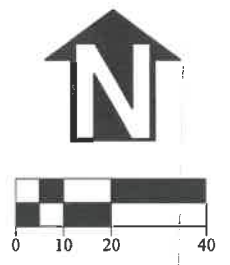
REVISIONS	
NO.	BY:

**PUBLIC WORKS DEPARTMENT**  
**ENGINEERING SERVICES**

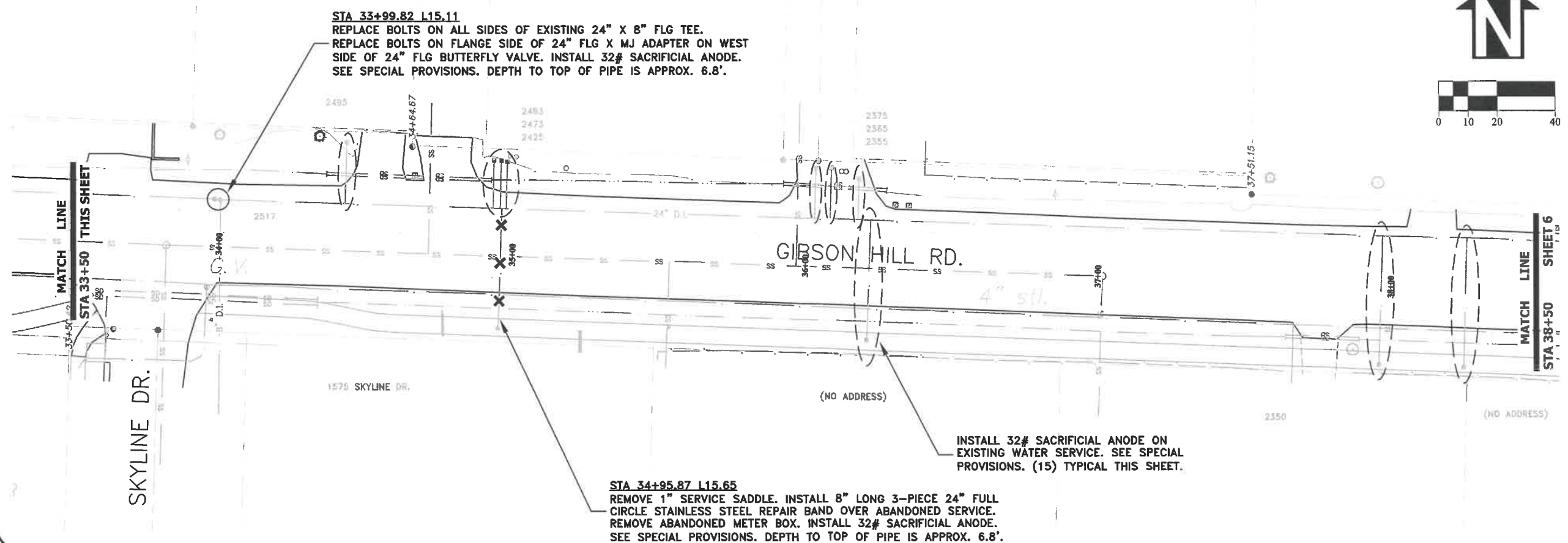
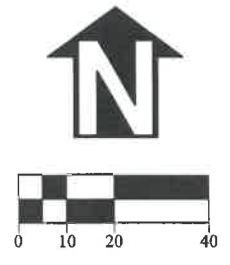
**WL-20-03, GIBSON HILL ROAD AND PARK TERRACE WATER LINE**  
**GIBSON HILL RD. CORROSION REPAIRS**



EXPIRATION DATE: 12/31/2021  
 SHEET NO. 4 OF 10  
 PROJECT NO: WL-20-03  
 FILE: BASE.DWG



NOTE: NEW BOLTS SHALL BE OF DOMESTIC MANUFACTURE. SEE SPECIAL PROVISIONS.



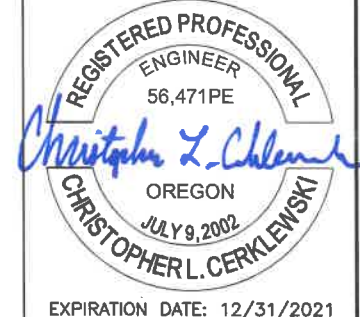
STA 34+95.87 L15.65  
 REMOVE 1" SERVICE SADDLE. INSTALL 8" LONG 3-PIECE 24" FULL CIRCLE STAINLESS STEEL REPAIR BAND OVER ABANDONED SERVICE. REMOVE ABANDONED METER BOX. INSTALL 32# SACRIFICIAL ANODE. SEE SPECIAL PROVISIONS. DEPTH TO TOP OF PIPE IS APPROX. 6.8'.

INSTALL 32# SACRIFICIAL ANODE ON EXISTING WATER SERVICE. SEE SPECIAL PROVISIONS. (15) TYPICAL THIS SHEET.

DESIGNED: C. CERKLEWSKI	REVISIONS
DRAWN: C. CERKLEWSKI	NO: --
CHECKED: S. BELCASTRO	BY: --
DATE: 1/9/2020	DATE: --

**PUBLIC WORKS DEPARTMENT**  
**ENGINEERING SERVICES**

**WL-20-03, GIBSON HILL ROAD AND PARK TERRACE WATER LINE**  
**GIBSON HILL RD. CORROSION REPAIRS**



EXPIRATION DATE: 12/31/2021

SHEET NO. 5 OF 10

PROJECT NO: WL-20-03

FILE: BASE.DWG

**STA 39+43.13 L17.75**  
 REPLACE BOLTS ON 8" FLANGE OF EXISTING 24" MJ X 8" FLG TEE. INSTALL 32# SACRIFICIAL ANODE. SEE SPECIAL PROVISIONS. DEPTH TO TOP OF PIPE IS APPROX. 7.0'.

**STA 38+75.49 L17.79 (APPROX)**  
 COORDINATE 24" X 1" LIVE TAP AND INSTALL STANDARD 1" SERVICE ASSEMBLY. INSTALL 32# SACRIFICIAL ANODE. SEE STANDARD DRAWING NO. 507. LOCATE AS MARKED IN THE FIELD BY THE ENGINEER.

**STA 38+83.10 L17.83**  
 COORDINATE 24" X 6" LIVE TAP AND INSTALL 32# SACRIFICIAL ANODE. SEE SPECIAL PROVISIONS. INSTALL STANDARD FIRE HYDRANT ASSEMBLY (N). SEE STANDARD DRAWING NO. 504 AND THE SPECIAL PROVISIONS. INSTALL CONCRETE THRUST BLOCK. SEE STANDARD DRAWING NO. 501.

**STA 39+83.54 L14.83**  
 REPLACE BOLTS ON ALL SIDES OF EXISTING 24" X 8" FLG TEE. REPLACE BOLTS ON FLANGE SIDE OF 24" FLG X MJ ADAPTER ON WEST SIDE OF 24" FLG BUTTERFLY VALVE. INSTALL 32# SACRIFICIAL ANODE. SEE SPECIAL PROVISIONS. DEPTH TO TOP OF PIPE IS APPROX. 6.9'.

**STA 41+28.77 L17.13**  
 REPLACE BOLTS ON 8" FLANGE OF EXISTING 24" MJ X 8" FLG TEE. INSTALL 32# SACRIFICIAL ANODE. SEE SPECIAL PROVISIONS. DEPTH TO TOP OF PIPE IS APPROX. 7.3'.

**STA 39+18.10 L18.03**  
 REMOVE EXISTING 6" FLG X MJ GATE VALVE FROM EXISTING 24" MJ X 6" FLG TEE AND INSTALL 6" BLIND FLANGE. INSTALL 32# SACRIFICIAL ANODE. SEE SPECIAL PROVISIONS. REMOVE EXISTING FIRE HYDRANT AND PROVIDE TO CITY FOR SALVAGE. DEPTH TO TOP OF PIPE IS APPROX. 7.0'

**STA 39+12.30 L17.99**  
 REMOVE 1" SERVICE SADDLE. INSTALL 8" LONG 3-PIECE 24" FULL CIRCLE STAINLESS STEEL REPAIR BAND OVER ABANDONED SERVICE. REMOVE ABANDONED METER BOX. INSTALL 32# SACRIFICIAL ANODE. SEE SPECIAL PROVISIONS. DEPTH TO TOP OF PIPE IS APPROX. 7.0'.

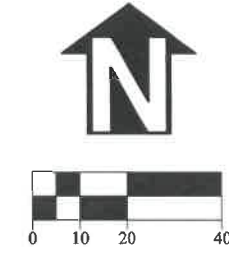
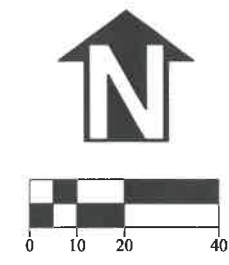
**STA 40+99.52 L16.14**  
 REPLACE BOLTS ON 8" FLANGE OF EXISTING 24" X 8" TAPPING SLEEVE. USE STAINLESS STEEL BOLTS AT THIS LOCATION. INSTALL 32# SACRIFICIAL ANODE. SEE SPECIAL PROVISIONS. DEPTH TO TOP OF PIPE IS APPROX. 7.3'.

NOTE: ALL WORK BETWEEN STA 38+50 AND STA 41+50 SHALL BE COMPLETED NO LATER THAN JUNE 12, 2020

NOTE: NEW BOLTS SHALL BE OF DOMESTIC MANUFACTURE. SEE SPECIAL PROVISIONS.

**STA 43+96.44 L15.85**  
 REPLACE BOLTS ON ALL SIDES OF EXISTING 24" X 8" FLG TEE. REPLACE BOLTS ON FLANGE SIDE OF 24" FLG X MJ ADAPTER ON WEST SIDE OF 24" FLG BUTTERFLY VALVE. INSTALL 32# SACRIFICIAL ANODE. SEE SPECIAL PROVISIONS. DEPTH TO TOP OF PIPE IS APPROX. 6.5'.

INSTALL 32# SACRIFICIAL ANODE ON EXISTING WATER SERVICE. SEE SPECIAL PROVISIONS. (3) TYPICAL THIS SHEET.



DESIGNED: C. CERKLEWSKI	REVISIONS
DRAWN: C. CERKLEWSKI	NO: BY:
CHECKED: S. BELCASTRO	DATE: 1/9/2020
DATE: 1/9/2020	

**PUBLIC WORKS DEPARTMENT**  
**ENGINEERING SERVICES**

**WL-20-03, GIBSON HILL ROAD AND PARK TERRACE WATER LINE**  
**GIBSON HILL RD. CORROSION REPAIRS**

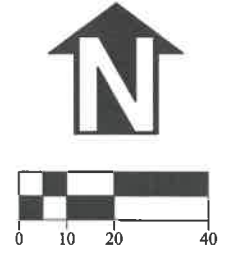
REGISTERED PROFESSIONAL ENGINEER  
 56,471PE  
 OREGON  
 JULY 9, 2002  
 CHRISTOPHER L. CERKLEWSKI

EXPIRATION DATE: 12/31/2021

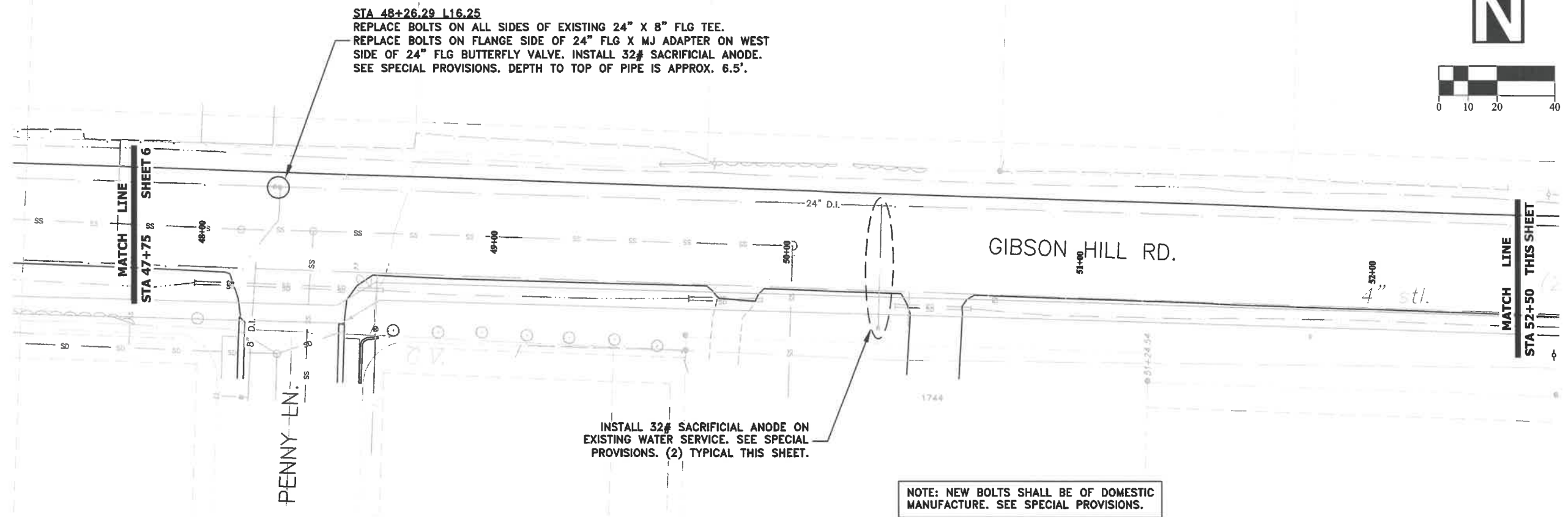
SHEET NO. 6 OF 10

PROJECT NO: WL-20-03


FILE: BASE.DWG



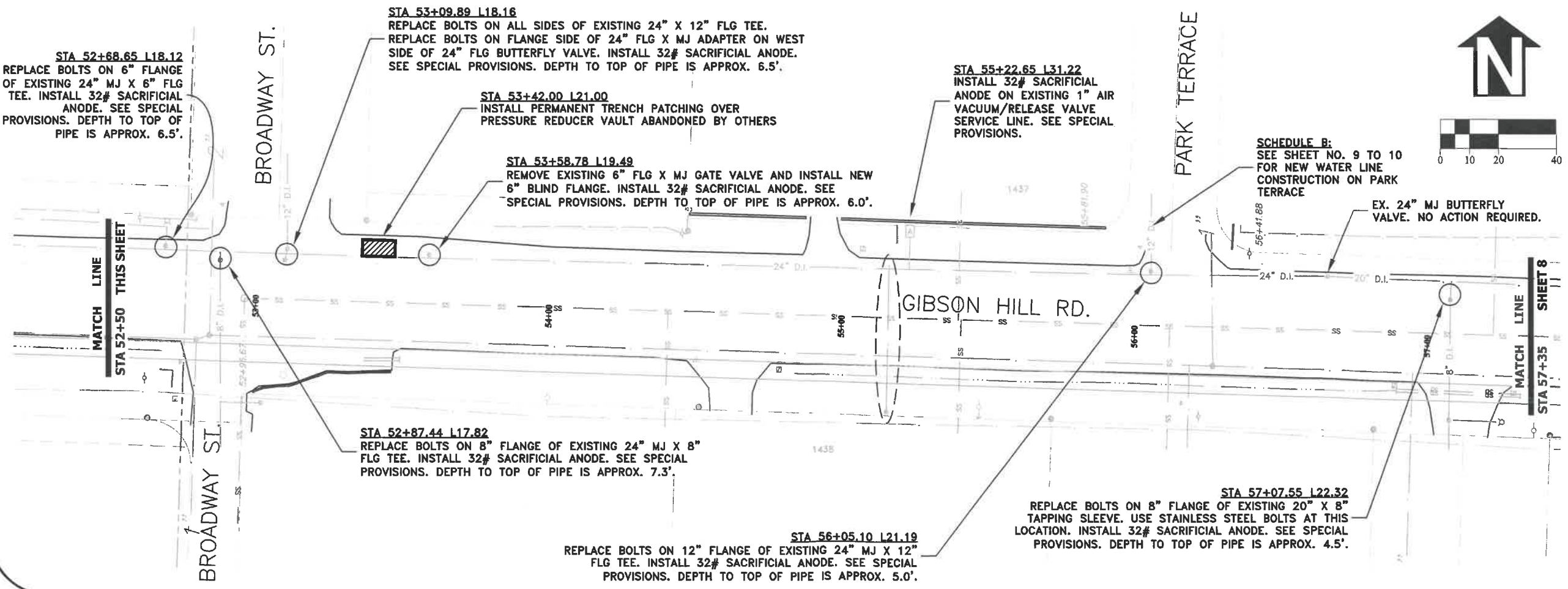
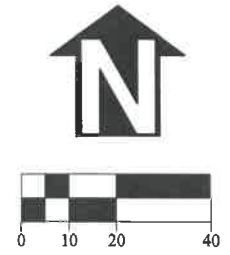
DESIGNED: C. CERKLEWSKI	REVISIONS
DRAWN: C. CERKLEWSKI	NO: ---
CHECKED: S. BELCASTRO	BY: ---
DATE: 1/9/2020	DATE: ---



**PUBLIC WORKS DEPARTMENT  
ENGINEERING SERVICES**



**WL-20-03, GIBSON HILL ROAD AND PARK TERRACE WATER LINE  
GIBSON HILL RD. CORROSION REPAIRS**



**REGISTERED PROFESSIONAL  
ENGINEER  
56,471PE**

*Christopher L. Cerkowski*  
**CHRISTOPHER L. CERKLEWSKI**  
 OREGON  
 JULY 9, 2002

EXPIRATION DATE: 12/31/2021

SHEET NO. 7 OF 10  
 PROJECT NO: WL-20-03  
 FILE: BASE.DWG

NOTE: NEW BOLTS SHALL BE OF DOMESTIC MANUFACTURE. SEE SPECIAL PROVISIONS.

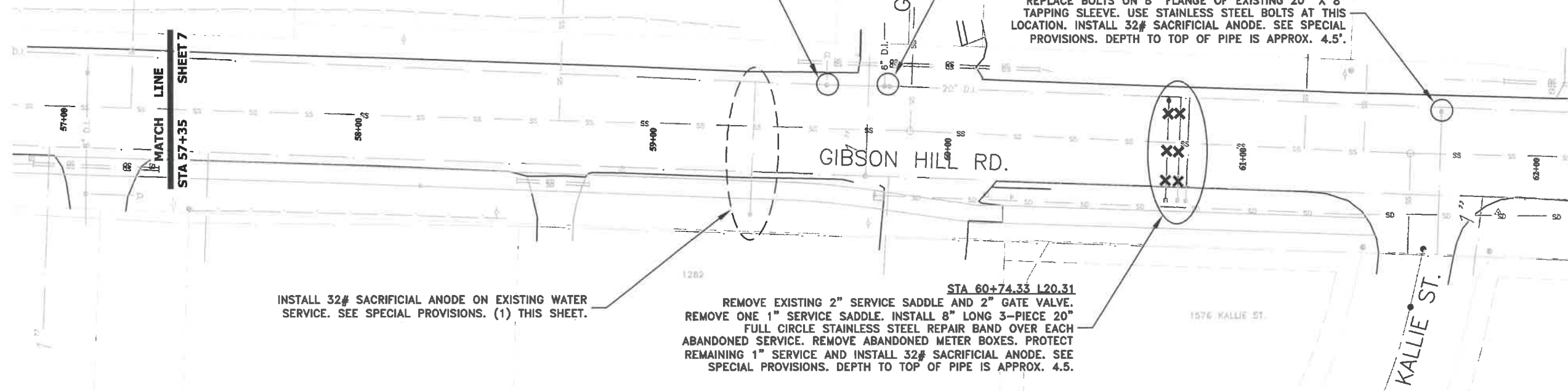
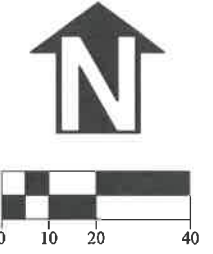
**STA 59+58.09 L20.54**  
 REPLACE BOLTS ON 6" FLANGE OF EXISTING 20" MJ X 6" FLG TEE. INSTALL 32# SACRIFICIAL ANODE. SEE SPECIAL PROVISIONS. DEPTH TO TOP OF PIPE IS APPROX. 5.5'.

**STA 59+77.84 L20.76**  
 REPLACE BOLTS ON ALL SIDES OF EXISTING 20" X 6" FLG TEE. REPLACE BOLTS ON FLANGE SIDE OF 20" FLG X MJ ADAPTER ON EAST SIDE OF 20" FLG BUTTERFLY VALVE. INSTALL 32# SACRIFICIAL ANODE. SEE SPECIAL PROVISIONS. DEPTH TO TOP OF PIPE IS APPROX. 5.0'.

**STA 61+66.72 L19.91**  
 REPLACE BOLTS ON 8" FLANGE OF EXISTING 20" X 8" TAPPING SLEEVE. USE STAINLESS STEEL BOLTS AT THIS LOCATION. INSTALL 32# SACRIFICIAL ANODE. SEE SPECIAL PROVISIONS. DEPTH TO TOP OF PIPE IS APPROX. 4.5'.

INSTALL 32# SACRIFICIAL ANODE ON EXISTING WATER SERVICE. SEE SPECIAL PROVISIONS. (1) THIS SHEET.

**STA 60+74.33 L20.31**  
 REMOVE EXISTING 2" SERVICE SADDLE AND 2" GATE VALVE. REMOVE ONE 1" SERVICE SADDLE. INSTALL 8" LONG 3-PIECE 20" FULL CIRCLE STAINLESS STEEL REPAIR BAND OVER EACH ABANDONED SERVICE. REMOVE ABANDONED METER BOXES. PROTECT REMAINING 1" SERVICE AND INSTALL 32# SACRIFICIAL ANODE. SEE SPECIAL PROVISIONS. DEPTH TO TOP OF PIPE IS APPROX. 4.5'.



DESIGNED: C. CERKLEWSKI	REVISIONS
DRAWN: C. CERKLEWSKI	NO: ---
CHECKED: S. BELCASTRO	BY: ---
DATE: 1/9/2020	DATE: ---

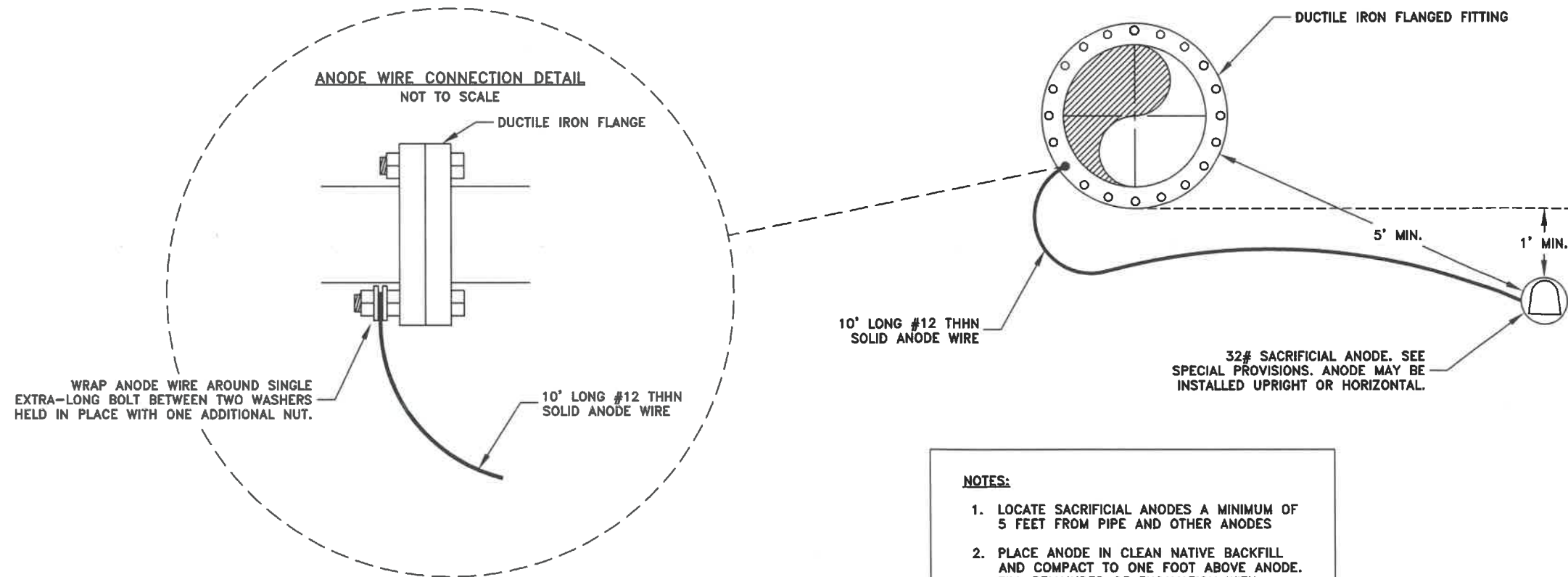
**PUBLIC WORKS DEPARTMENT**  
**ENGINEERING SERVICES**

**WL-20-03, GIBSON HILL ROAD AND PARK TERRACE WATER LINE**  
**GIBSON HILL RD. CORROSION REPAIRS**



**DUCTILE IRON FLANGED FITTING ANODE CONNECTION DETAIL**

NOT TO SCALE



32# SACRIFICIAL ANODE. SEE SPECIAL PROVISIONS. ANODE MAY BE INSTALLED UPRIGHT OR HORIZONTAL.

**NOTES:**

1. LOCATE SACRIFICIAL ANODES A MINIMUM OF 5 FEET FROM PIPE AND OTHER ANODES
2. PLACE ANODE IN CLEAN NATIVE BACKFILL AND COMPACT TO ONE FOOT ABOVE ANODE. FILL REMAINDER OF EXCAVATION WITH SELECT BACKFILL.



EXPIRATION DATE: 12/31/2021

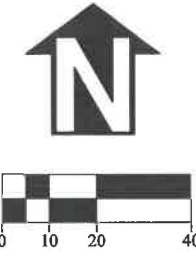
SHEET NO. 8 OF 10

PROJECT NO: WL-20-03

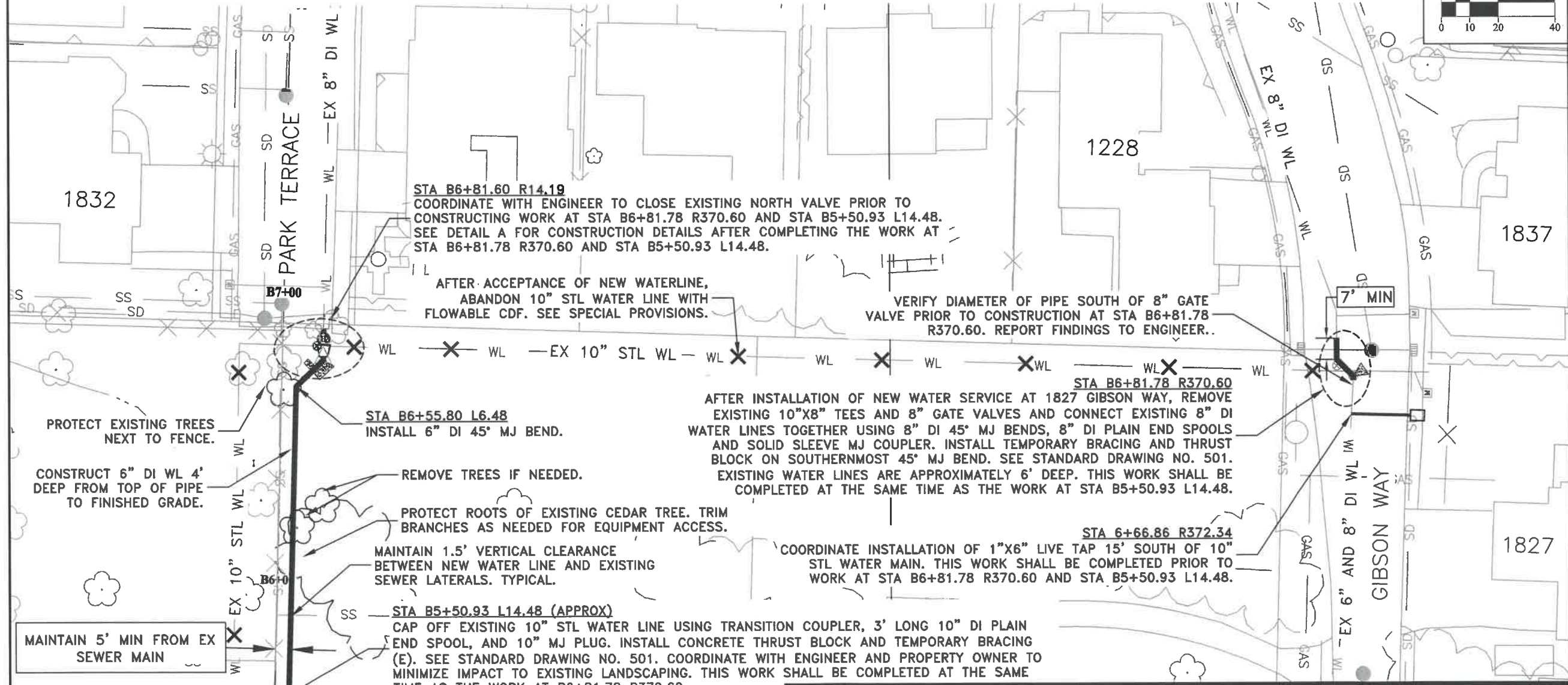
FILE: BASE.DWG



THIS WORK SHALL BE PAID FOR UNDER SCHEDULE B.



DESIGNED: C. CERKLEWSKI	REVISIONS
DRAWN: C. CERKLEWSKI	NO: ---
CHECKED: S. BELCASTRO	BY: ---
DATE: 1/9/2020	DATE: ---



**STA B6+81.60 R14.19**  
 COORDINATE WITH ENGINEER TO CLOSE EXISTING NORTH VALVE PRIOR TO CONSTRUCTING WORK AT STA B6+81.78 R370.60 AND STA B5+50.93 L14.48. SEE DETAIL A FOR CONSTRUCTION DETAILS AFTER COMPLETING THE WORK AT STA B6+81.78 R370.60 AND STA B5+50.93 L14.48.

AFTER ACCEPTANCE OF NEW WATERLINE, ABANDON 10" STL WATER LINE WITH FLOWABLE CDF. SEE SPECIAL PROVISIONS.

VERIFY DIAMETER OF PIPE SOUTH OF 8" GATE VALVE PRIOR TO CONSTRUCTION AT STA B6+81.78 R370.60. REPORT FINDINGS TO ENGINEER.

AFTER INSTALLATION OF NEW WATER SERVICE AT 1827 GIBSON WAY, REMOVE EXISTING 10"x8" TEES AND 8" GATE VALVES AND CONNECT EXISTING 8" DI WATER LINES TOGETHER USING 8" DI 45° MJ BENDS, 8" DI PLAIN END SPOOLS AND SOLID SLEEVE MJ COUPLER. INSTALL TEMPORARY BRACING AND THRUST BLOCK ON SOUTHERNMOST 45° MJ BEND. SEE STANDARD DRAWING NO. 501. EXISTING WATER LINES ARE APPROXIMATELY 6' DEEP. THIS WORK SHALL BE COMPLETED AT THE SAME TIME AS THE WORK AT STA B5+50.93 L14.48.

COORDINATE INSTALLATION OF 1"x6" LIVE TAP 15' SOUTH OF 10" STL WATER MAIN. THIS WORK SHALL BE COMPLETED PRIOR TO WORK AT STA B6+81.78 R370.60 AND STA B5+50.93 L14.48.

**STA B6+55.80 L6.48**  
 INSTALL 6" DI 45° MJ BEND.

REMOVE TREES IF NEEDED.  
 PROTECT ROOTS OF EXISTING CEDAR TREE. TRIM BRANCHES AS NEEDED FOR EQUIPMENT ACCESS.  
 MAINTAIN 1.5' VERTICAL CLEARANCE BETWEEN NEW WATER LINE AND EXISTING SEWER LATERALS. TYPICAL.

**STA B5+50.93 L14.48 (APPROX)**  
 CAP OFF EXISTING 10" STL WATER LINE USING TRANSITION COUPLER, 3' LONG 10" DI PLAIN END SPOOL, AND 10" MJ PLUG. INSTALL CONCRETE THRUST BLOCK AND TEMPORARY BRACING (E). SEE STANDARD DRAWING NO. 501. COORDINATE WITH ENGINEER AND PROPERTY OWNER TO MINIMIZE IMPACT TO EXISTING LANDSCAPING. THIS WORK SHALL BE COMPLETED AT THE SAME TIME AS THE WORK AT B6+81.78 R370.60.

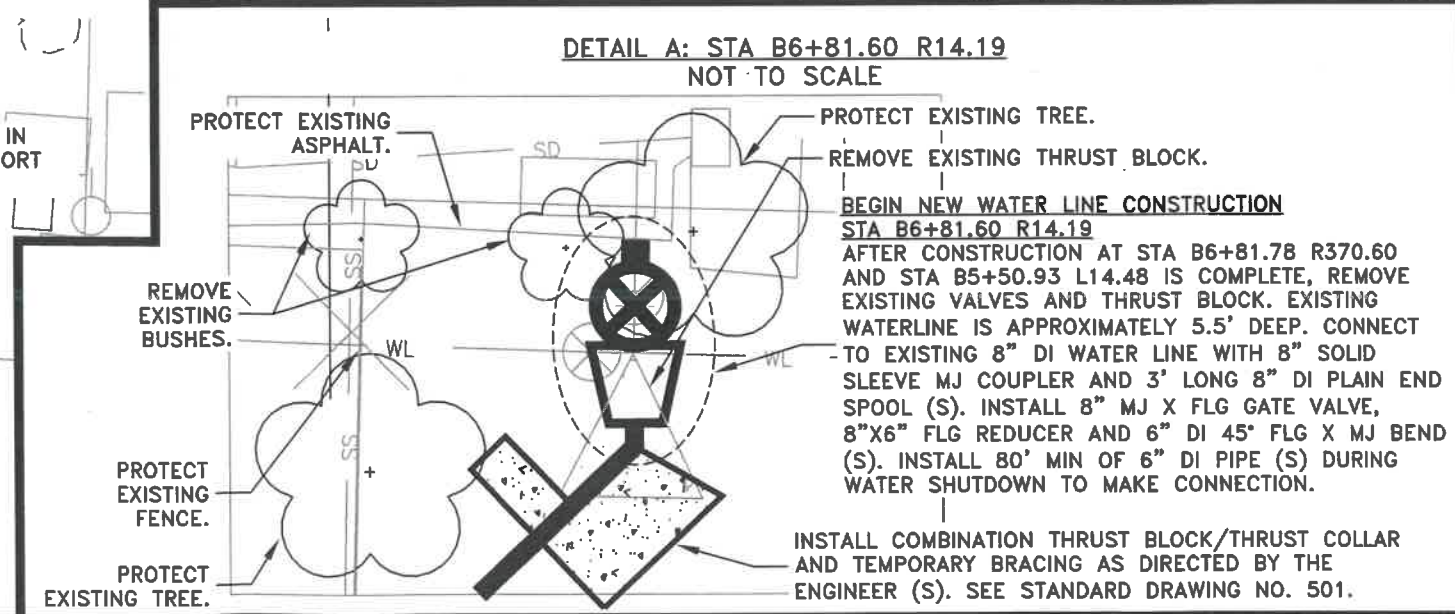
PROTECT EXISTING TREES NEXT TO FENCE.  
 CONSTRUCT 6" DI WL 4' DEEP FROM TOP OF PIPE TO FINISHED GRADE.

MAINTAIN 5' MIN FROM EX SEWER MAIN

**STA 5+22.99 R4.88 AND STA 5+12.45 L5.63**  
 INSTALL 6" DI 45° MJ BENDS.

INVESTIGATE WATER LINE PLUMBING IN YARD OF 1803 PARK TERRACE. REPORT FINDINGS TO ENGINEER.

CONSTRUCT STANDARD 1" COPPER SERVICE ASSEMBLY. SEE STANDARD DRAWING NO. 507 AND SPECIAL PROVISIONS. LOCATION TO BE SPECIFIED IN THE FIELD BY THE ENGINEER. INSTALL 17# SACRIFICIAL ANODE. (2) TYPICAL THIS SHEET.



**DETAIL A: STA B6+81.60 R14.19**  
 NOT TO SCALE

PROTECT EXISTING ASPHALT.  
 PROTECT EXISTING TREE.  
 REMOVE EXISTING THRUST BLOCK.

**BEGIN NEW WATER LINE CONSTRUCTION STA B6+81.60 R14.19**  
 AFTER CONSTRUCTION AT STA B6+81.78 R370.60 AND STA B5+50.93 L14.48 IS COMPLETE, REMOVE EXISTING VALVES AND THRUST BLOCK. EXISTING WATERLINE IS APPROXIMATELY 5.5' DEEP. CONNECT TO EXISTING 8" DI WATER LINE WITH 8" SOLID SLEEVE MJ COUPLER AND 3' LONG 8" DI PLAIN END SPOOL (S). INSTALL 8" MJ X FLG GATE VALVE, 8"x6" FLG REDUCER AND 6" DI 45° FLG X MJ BEND (S). INSTALL 80' MIN OF 6" DI PIPE (S) DURING WATER SHUTDOWN TO MAKE CONNECTION.

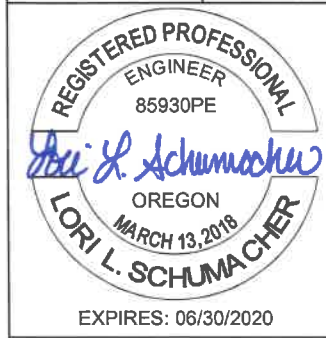
REMOVE EXISTING BUSHES.  
 PROTECT EXISTING FENCE.  
 PROTECT EXISTING TREE.

INSTALL COMBINATION THRUST BLOCK/THRUST COLLAR AND TEMPORARY BRACING AS DIRECTED BY THE ENGINEER (S). SEE STANDARD DRAWING NO. 501.

PUBLIC WORKS DEPARTMENT  
 ENGINEERING SERVICES

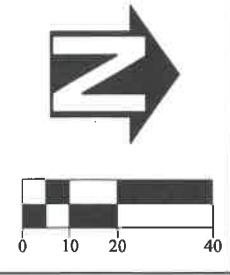


WL-20-03, GIBSON HILL ROAD AND PARK TERRACE WATER LINE  
 PARK TERRACE WATER LINE



EXPIRES: 06/30/2020  
 SHEET NO. 9 OF 10  
 PROJECT NO: WL-20-03  
 FILE: BASE.DWG

THIS WORK SHALL BE PAID FOR UNDER SCHEDULE B.



STA B0+68.86 L3.61 (APPROX)

INSTALL TEMPORARY 2" BLOW-OFF ASSEMBLY WITHIN 10' OF EXISTING 12" DI WATER LINE CONNECTION TO BE USED DURING TESTING AND CHLORINATION PROCEDURES.

AFTER ACCEPTANCE OF NEW WATER LINE, REMOVE TEMPORARY 2" BLOW-OFF ASSEMBLY AND EXISTING 12" DI BENDS. CONNECT TO EXISTING 12" DI WATER LINE BY INSTALLING 6" X 12" MJ REDUCER, APPROXIMATELY 9' FOOT LONG 6" DI PLAIN END SPOOL, AND 6" DI SOLID SLEEVE MJ COUPLER.

AFTER ACCEPTANCE OF NEW WATERLINE, ABANDON 10" STL WATER LINE WITH FLOWABLE CDF. SEE SPECIAL PROVISIONS.

CONSTRUCT 6" DI WL 4' DEEP FROM TOP OF PIPE TO FINISHED GRADE.

STA B3+87.78 L5.00 (APPROX)

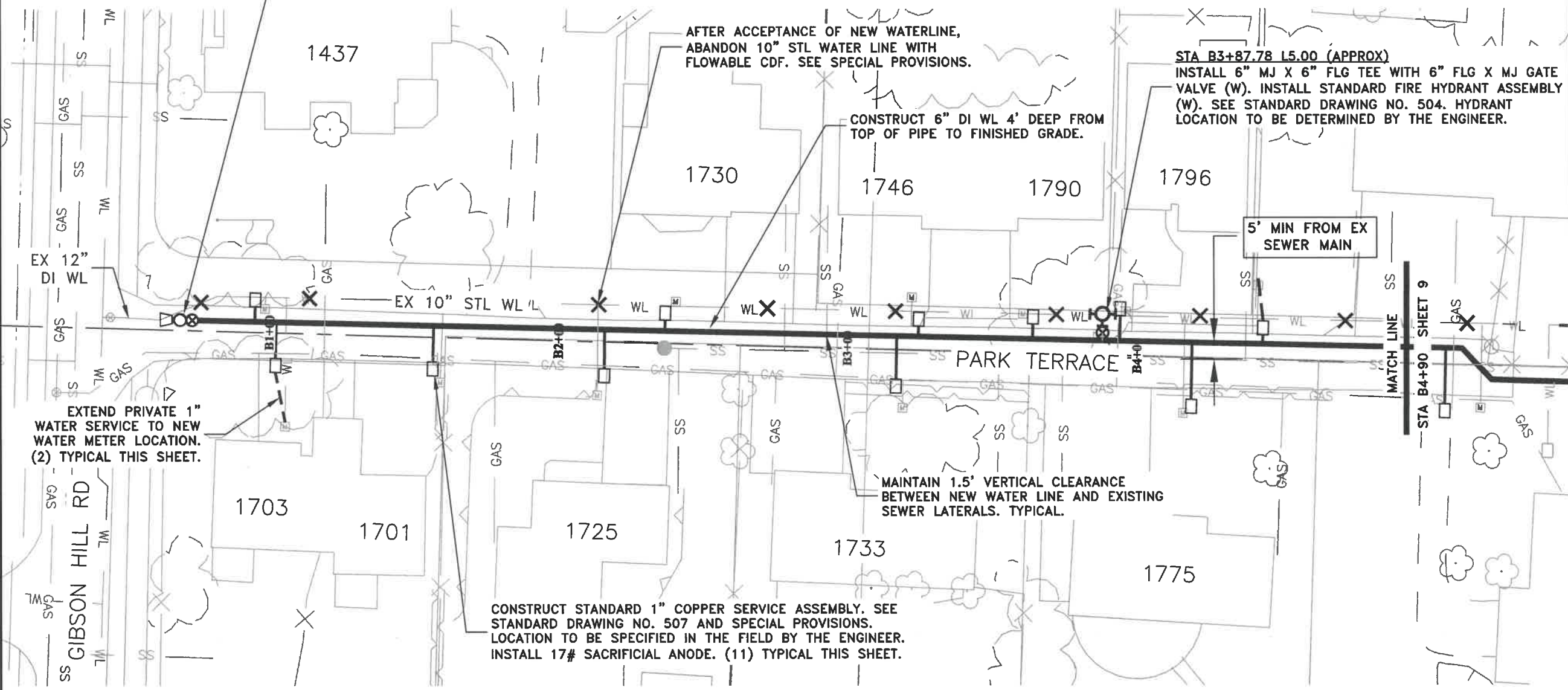
INSTALL 6" MJ X 6" FLG TEE WITH 6" FLG X MJ GATE VALVE (W). INSTALL STANDARD FIRE HYDRANT ASSEMBLY (W). SEE STANDARD DRAWING NO. 504. HYDRANT LOCATION TO BE DETERMINED BY THE ENGINEER.

5' MIN FROM EX SEWER MAIN

MAINTAIN 1.5' VERTICAL CLEARANCE BETWEEN NEW WATER LINE AND EXISTING SEWER LATERALS. TYPICAL.


CONSTRUCT STANDARD 1" COPPER SERVICE ASSEMBLY. SEE STANDARD DRAWING NO. 507 AND SPECIAL PROVISIONS. LOCATION TO BE SPECIFIED IN THE FIELD BY THE ENGINEER. INSTALL 17# SACRIFICIAL ANODE. (11) TYPICAL THIS SHEET.

EXTEND PRIVATE 1" WATER SERVICE TO NEW WATER METER LOCATION. (2) TYPICAL THIS SHEET.



DESIGNED: C. CERKLEWSKI	REVISIONS
DRAWN: C. CERKLEWSKI	NO: ---
CHECKED: S. BELCASTRO	BY: ---
DATE: 1/9/2020	DATE: ---

**PUBLIC WORKS DEPARTMENT**  
**ENGINEERING SERVICES**



**WL-20-03, GIBSON HILL ROAD AND PARK TERRACE WATER LINE**  
**PARK TERRACE WATER LINE**

REGISTERED PROFESSIONAL  
ENGINEER  
85930PE  
*Lori L. Schumacher*  
OREGON  
MARCH 13, 2018  
LORI L. SCHUMACHER

EXPIRES: 06/30/2020

SHEET NO.	10 OF 10
PROJECT NO:	WL-20-03
FILE:	BASE.DWG