

CITY OF ALBANY

WL-21-04, AIRPORT ROAD WATER LINE

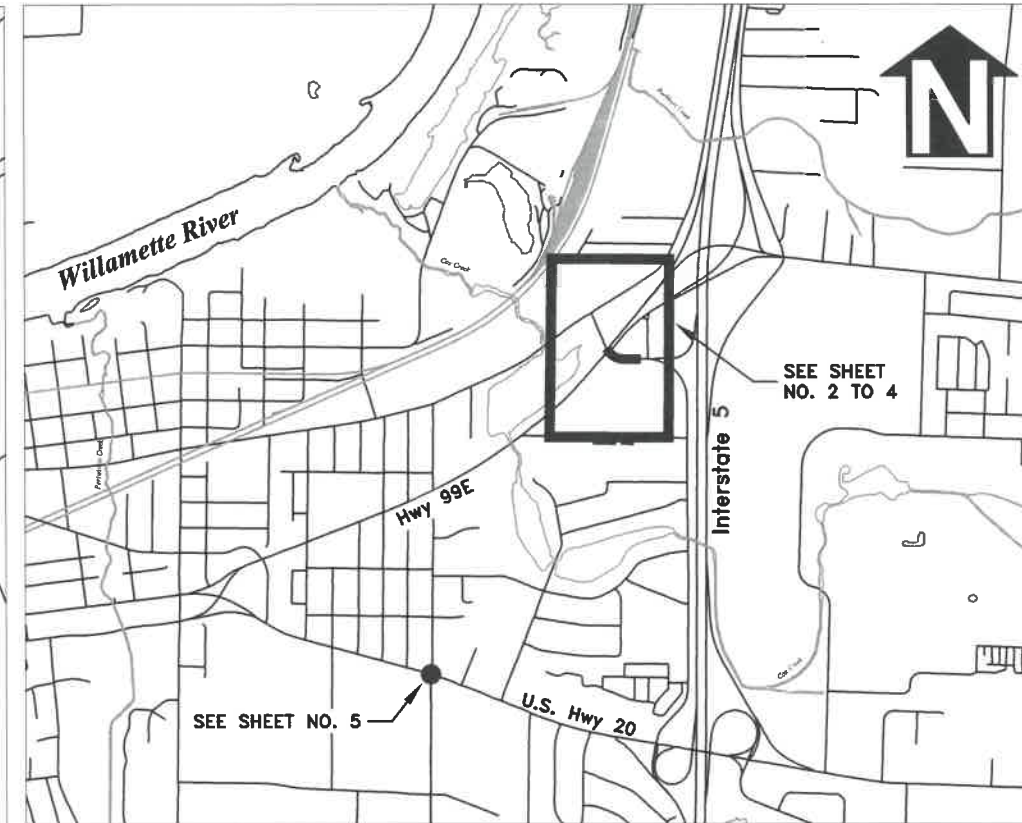
SHEET INDEX

SHEET NO. 1	COVER & GENERAL NOTES
SHEET NO. 2	AIRPORT ROAD WATER LINE CONSTRUCTION
SHEET NO. 3	AIRPORT ROAD WATER LINE ABANDONMENT PLAN
SHEET NO. 4	DUCTILE IRON FLANGED FITTING ANODE CONNECTION DETAIL
SHEET NO. 5	SANTIAM HWY WATER LINE CONSTRUCTION

LEGEND

	EXISTING WATER SERVICE		EXISTING POWER POLE
	RECONNECT EXISTING METER		EXISTING STORM MANHOLE
	INSTALL NEW SERVICE WITH NO METER		NEW CURB INLET
	REPLACE EXISTING METER WITH NEW METER		NEW CATCH BASIN
	AIR RELEASE VALVE		NEW CURB INLET
	EXISTING WATER VALVE		NEW CATCH BASIN
	NEW WATER VALVE		EXISTING STREET LIGHT
	EXISTING WATER LINE		EXISTING TRAFFIC SIGN
	EXISTING GAS LINE		NEW TRAFFIC SIGN
	EXISTING STORM LINE		EXISTING HYDRANT
	EXISTING SANITARY SEWER LINE		NEW HYDRANT
	EXISTING QLN DUCT		REDUCER
	EXISTING POWER LINES		
	NEW WATER LINE		
	NEW STORM LINE		
	NEW STORM DRAIN MAINLINE CLEANOUT		
	NEW STORM DRAIN MANHOLE		

NOTE: ALL ELEVATIONS ARE BASED ON NGVD29



Vicinity Map
Not to Scale

GENERAL NOTES

- ALL CONSTRUCTION SHALL CONFORM TO THE CITY OF ALBANY STANDARD CONSTRUCTION SPECIFICATIONS AND ASSOCIATED STANDARD DRAWINGS. THE CURRENT VERSION OF THE CITY OF ALBANY STANDARD CONSTRUCTION SPECIFICATIONS CAN BE FOUND ON THE CITY'S WEBSITE AT WWW.CITYOFALBANY.NET.
- UTILITIES SHOWN ARE FOR REFERENCE ONLY. FOR A FIELD LOCATE, CALL THE UTILITIES NOTIFICATIONS CENTER AT 1-800-332-2344.
- OPERATING ACCESS FOR CITY MAINTENANCE PERSONNEL TO EXISTING AND NEW WATER VALVES AND MANHOLES SHALL BE CONTINUOUSLY MAINTAINED BY THE CONTRACTOR DURING ALL CONSTRUCTION ACTIVITIES.
- CONTRACTOR SHALL VERIFY ALL EXISTING PIPE ELEVATIONS, PIPE DIAMETERS, AND PIPE MATERIALS AT CONNECTION AND ABANDONMENT LOCATIONS PRIOR TO CONSTRUCTION. ANY DISCREPANCIES SHALL BE REPORTED TO ENGINEER PRIOR TO BEGINNING WORK.
- ATTENTION: OREGON LAW REQUIRES YOU TO FOLLOW RULES ADOPTED BY THE OREGON UTILITY NOTIFICATION CENTER. THOSE RULES ARE SET FORTH IN OAR 952-001-0010 THROUGH OAR 952-001-0090. YOU MAY OBTAIN COPIES OF THE RULES BY CALLING THE CENTER. (NOTE: THE TELEPHONE NUMBER FOR THE OREGON UTILITY NOTIFICATION CENTER IS (503) 232-1987).
- CONTRACTOR SHALL BE RESPONSIBLE FOR PROPER INSTALLATION AND MAINTENANCE OF ALL EROSION PREVENTION SEDIMENT CONTROL (EPSC) MEASURES IN ACCORDANCE WITH LOCAL, STATE, AND FEDERAL REGULATIONS UNTIL ALL CONSTRUCTION IS COMPLETED AND APPROVED BY THE CITY OF ALBANY, AND VEGETATION/LANDSCAPING IS ESTABLISHED. FOR GUIDANCE, REFER TO THE CITY OF ALBANY EPSC MANUAL WHICH CAN BE FOUND AT www.cityofalbany.net.
- ALL PERMANENT TRENCH PATCHING SHALL HAVE A MINIMUM THICKNESS OF 8" OR MATCH EXISTING THICKNESS, WHICHEVER IS GREATER. TEMPORARY HOT-MIX ASPHALT TRENCH PATCH WILL BE REQUIRED AT THE END OF EACH WORKING DAY. SEE SPECIAL PROVISIONS.

DESIGNED: C. CERKLEWSKI
DRAWN: C. CERKLEWSKI
CHECKED: S. BELCASTRO
DATE: 6/7/2021

REVISIONS	
NO.	BY:

PUBLIC WORKS DEPARTMENT
ENGINEERING SERVICES

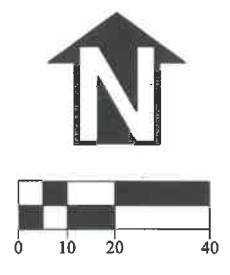
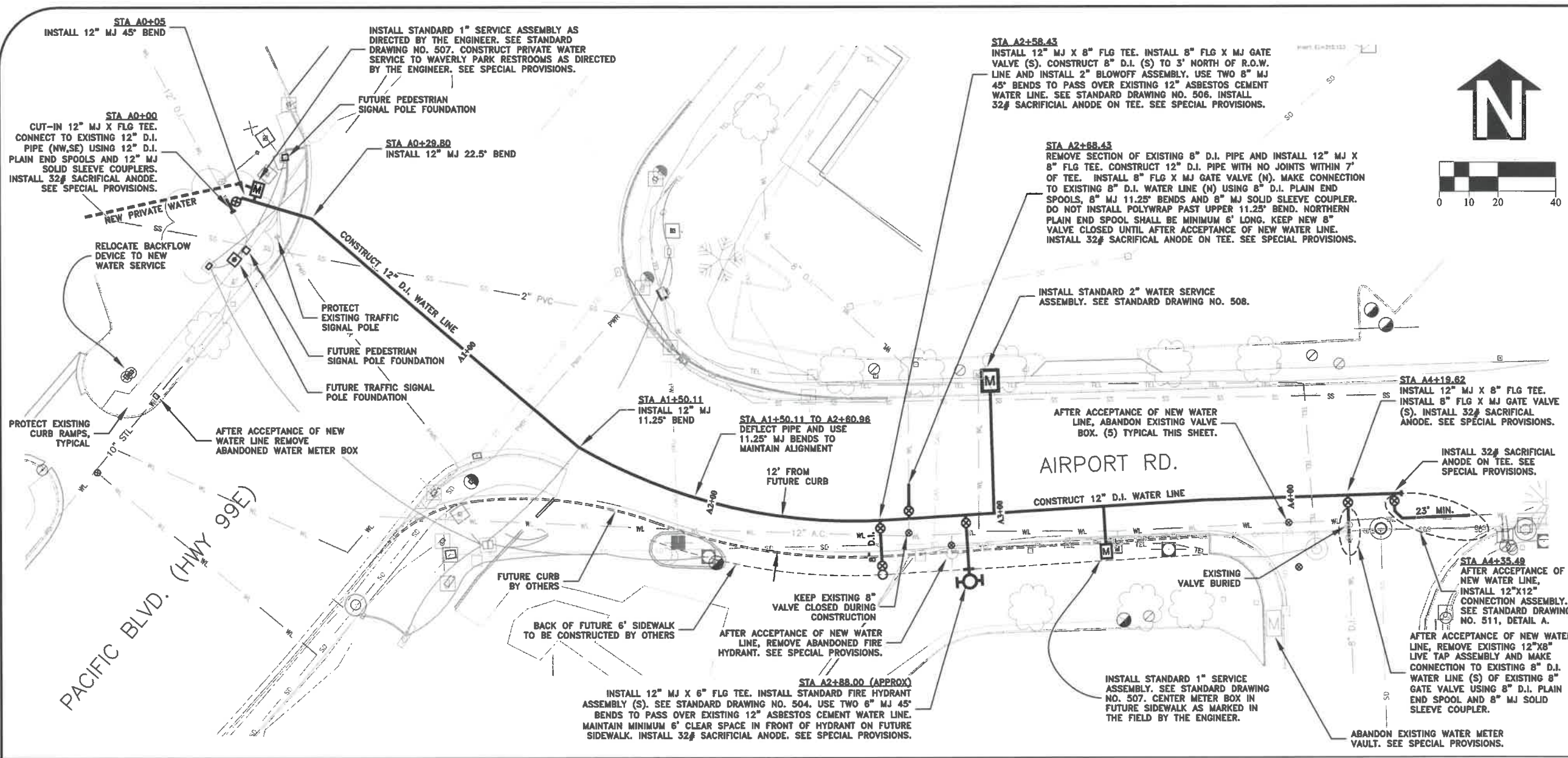


WL-21-04, AIRPORT ROAD WATER LINE



EXPIRATION DATE: 12/31/2021

SHEET NO. 1 OF 5
PROJECT NO: WL-21-04
FILE: COVER.DWG

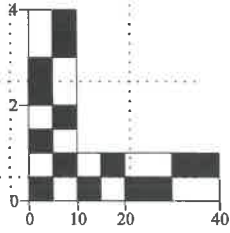
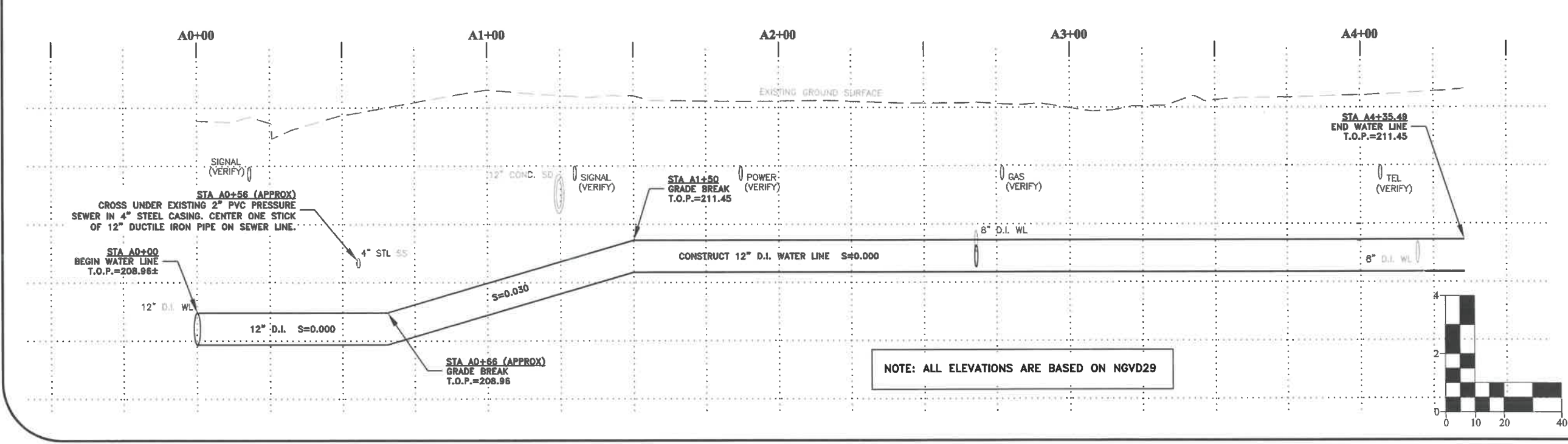


DESIGNED: C. CERKLEWSKI	REVISIONS
DRAWN: C. CERKLEWSKI	NO: ---
CHECKED: S. BELCASTRO	BY: ---
DATE: 6/7/2021	DATE: ---

**PUBLIC WORKS DEPARTMENT
ENGINEERING SERVICES**



**WL-21-04, AIRPORT ROAD WATER LINE
AIRPORT ROAD WATER LINE CONSTRUCTION**



REGISTERED PROFESSIONAL ENGINEER
56,471PE
Christopher L. Cerkowski
OREGON
JULY 9, 2002

EXPIRATION DATE: 12/31/2021

SHEET NO. 2 OF 5

PROJECT NO: WL-21-04

FILE: BASE.DWG

WATER LINE ABANDONMENT NOTES:

1. INSTALLATION OF INJECTION PORTS AND ACCESS HOLES SHALL BE INCLUDED IN THIS WORK.
2. ALL WATER TIE-INS BETWEEN NEW AND EXISTING WATER LINES SHALL BE COMPLETED PRIOR TO START OF ABANDONMENT WORK.

AFTER ACCEPTANCE OF NEW WATER LINE, REMOVE SEGMENT OF EXISTING 10" STEEL WATER LINE (NE) OF EXISTING 10" TEE. INSTALL SHORT 10" D.I. PLAIN END SPOOL WITH 10" MJ CAP (NE). CONNECT TO EXISTING 10" STEEL WATER LINE (SW) USING TRANSITION COUPLER. INSTALL TEMPORARY BRACING AND CONSTRUCT CONCRETE THRUST BLOCK (NE). SEE STANDARD DRAWING NO. 501.

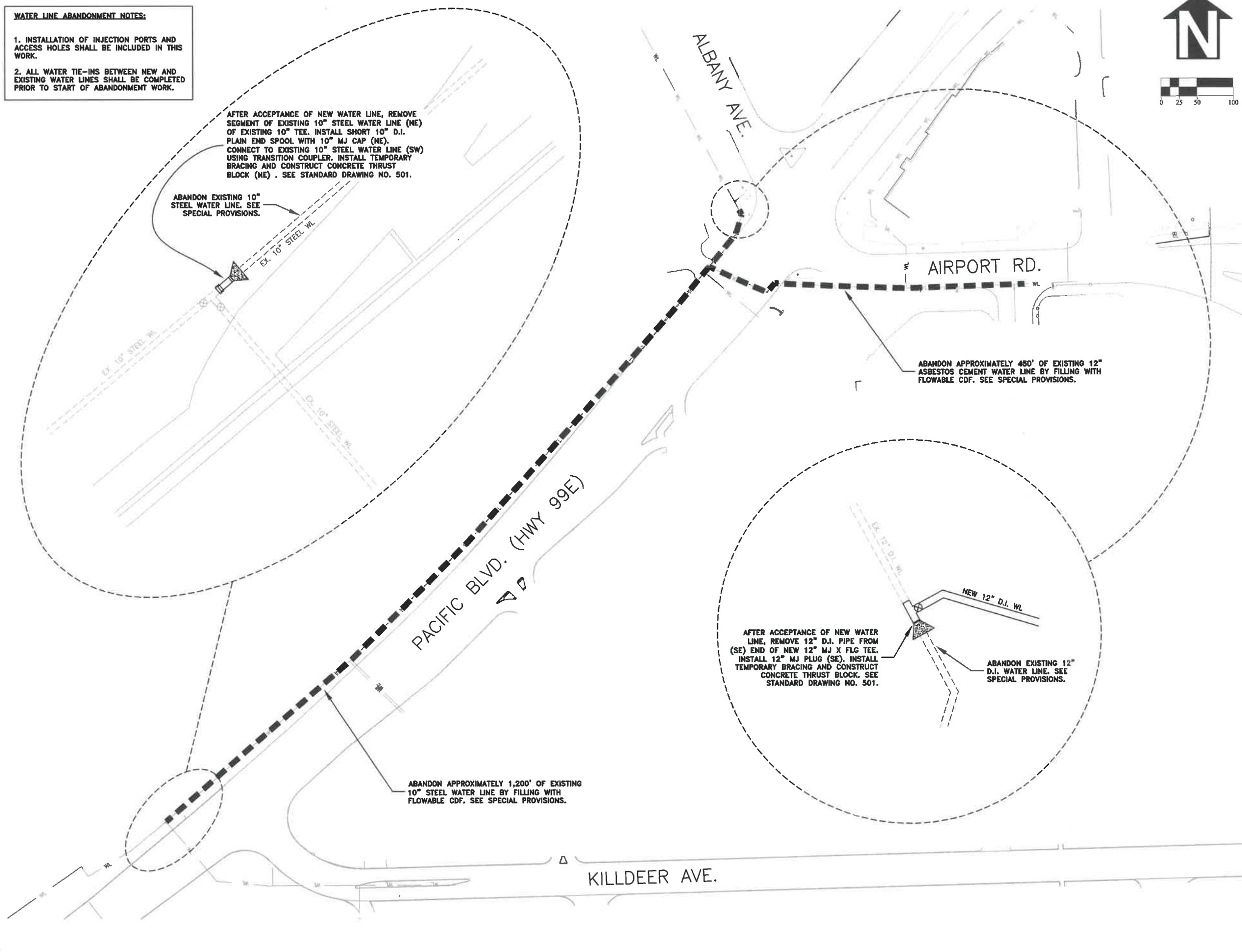
ABANDON EXISTING 10" STEEL WATER LINE. SEE SPECIAL PROVISIONS.

ABANDON APPROXIMATELY 450' OF EXISTING 12" ASBESTOS CEMENT WATER LINE BY FILLING WITH FLOWABLE CDF. SEE SPECIAL PROVISIONS.

AFTER ACCEPTANCE OF NEW WATER LINE, REMOVE 12" D.I. PIPE FROM (SE) END OF NEW 12" MJ X FLG TEE. INSTALL 12" MJ PLUG (SE). INSTALL TEMPORARY BRACING AND CONSTRUCT CONCRETE THRUST BLOCK. SEE STANDARD DRAWING NO. 501.

ABANDON EXISTING 12" D.I. WATER LINE. SEE SPECIAL PROVISIONS.

ABANDON APPROXIMATELY 1,200' OF EXISTING 10" STEEL WATER LINE BY FILLING WITH FLOWABLE CDF. SEE SPECIAL PROVISIONS.



DESIGNED: C. CERKLEWSKI
 DRAWN: C. CERKLEWSKI
 CHECKED: S. BELCASTRO
 DATE: 6/7/2021

REVISIONS	NO.	BY:	DATE:

PUBLIC WORKS DEPARTMENT
ENGINEERING SERVICES



WL-21-04, AIRPORT ROAD WATER LINE
AIRPORT ROAD WATER LINE ABANDONMENT PLAN



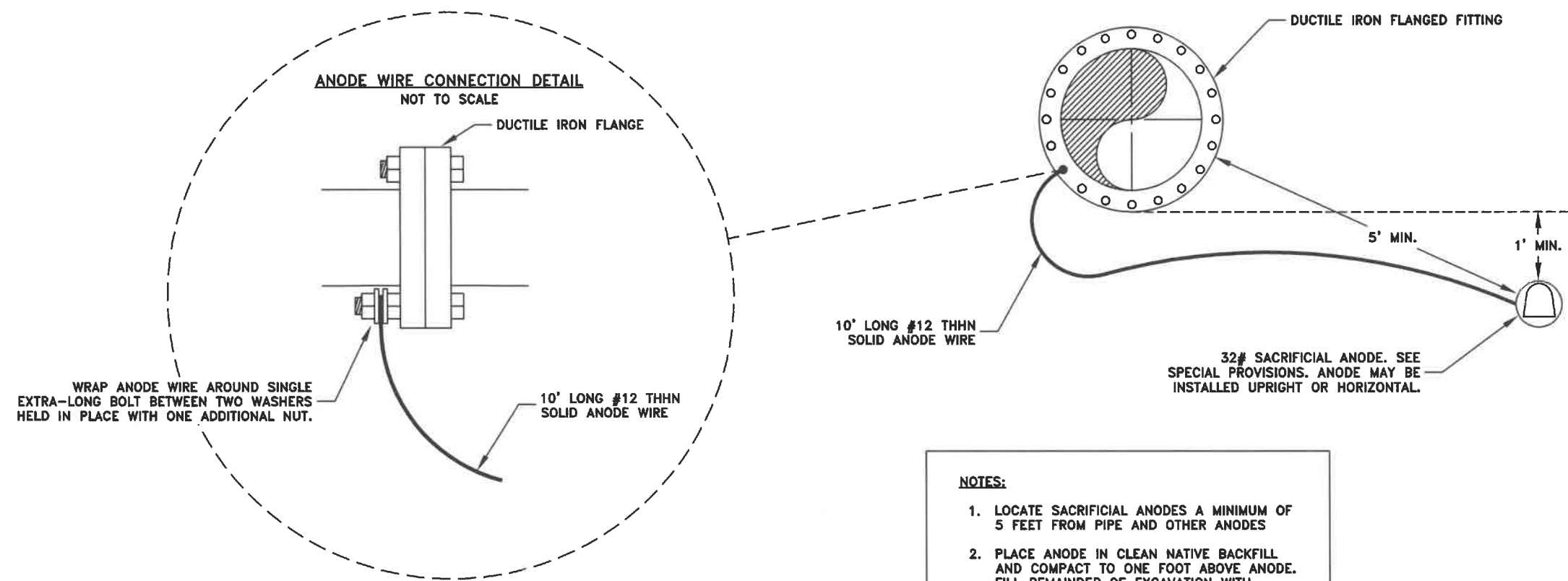
EXPIRATION DATE: 12/31/2021

SHEET NO. 3 OF 5

PROJECT NO: WL-21-04

FILE: BASE.DWG

DUCTILE IRON FLANGED FITTING ANODE CONNECTION DETAIL
NOT TO SCALE



- NOTES:**
1. LOCATE SACRIFICIAL ANODES A MINIMUM OF 5 FEET FROM PIPE AND OTHER ANODES
 2. PLACE ANODE IN CLEAN NATIVE BACKFILL AND COMPACT TO ONE FOOT ABOVE ANODE. FILL REMAINDER OF EXCAVATION WITH SELECT BACKFILL.

DESIGNED: C. CERKLEWSKI	REVISIONS
DRAWN: C. CERKLEWSKI	NO: --
CHECKED: S. BELCASTRO	BY: --
DATE: 6/7/2021	NO: --
	DATE: --
	NO: --
	DATE: --
	NO: --
	DATE: --
	NO: --

PUBLIC WORKS DEPARTMENT
ENGINEERING SERVICES



WL-21-04, AIRPORT ROAD WATER LINE
DUCTILE IRON FLANGED FITTING ANODE CONNECTION DETAIL



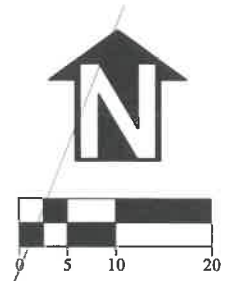
EXPIRATION DATE: 12/31/2021

SHEET NO. 4 OF 5

PROJECT NO: WL-21-04

FILE: BASE.DWG

SANTIAM HWY (U.S. HWY 20)



AFTER WATER SERVICE HAS BEEN SWITCHED TO NEW WATER METER, REMOVE ENTIRE COVER OF EXISTING METER BOX, FILL WITH SELECT BACKFILL AND PLACE 4" PCC TO FINISH GRADE.

AFTER WATER SERVICE HAS BEEN SWITCHED TO NEW SERVICE LINE, REMOVE EXISTING SERVICE SADDLE FROM EXISTING 12" ASBESTOS CEMENT WATER LINE AND INSTALL FULL CIRCLE STAINLESS STEEL REPAIR BAND. RESTORE ASPHALT SURFACE WITH 8" THICK ASPHALT TRENCH PATCH. SEE SPECIAL PROVISIONS.

VERIFY LOCATION, SIZE AND MATERIAL OF EXISTING PRIVATE WATER SERVICE LINE PRIOR TO START OF WORK.

CONSTRUCT 2" PRIVATE WATER SERVICE BETWEEN NEW WATER SERVICE AND EXISTING PRIVATE WATER SERVICE LINE AS DIRECTED BY THE ENGINEER AND PER LOCAL PLUMBING CODE. SEE SPECIAL PROVISIONS.

2650 SANTIAM HWY
U.S. BANK

COORDINATE 2" LIVE TAP ON EXISTING 12" A.C. WATER LINE. INSTALL STANDARD 2" WATER LINE SERVICE ASSEMBLY. SEE STANDARD DRAWING NO. 508.

EXISTING
MEDIAN ISLAND
10'
WAVERLY DR.

DESIGNED: C. CERKLEWSKI
DRAWN: C. CERKLEWSKI
CHECKED: S. BELCASTRO
DATE: 6/7/2021

REVISIONS	
NO.	BY:

PUBLIC WORKS DEPARTMENT
ENGINEERING SERVICES



WL-21-04, AIRPORT ROAD WATER LINE
SANTIAM HWY WATER LINE CONSTRUCTION



EXPIRATION DATE: 12/31/2021

SHEET NO. 5 OF 5

PROJECT NO: WL-21-04

FILE: BASE.DWG