


NOZZLE SCHEDULE & ACCESSORIES					INNER TANK		OUTER TANK	
SERVICE	MK	STOCK NO	SIZE	FITTING	DEG	ELEV	DEG	ELEV
CAP	A	4558	17"	CAP 17" BUTTRESS THREAD BLK PE	0°	DOME	--	--
		6767		GSKT 17" THREAD CAP 1/2" PE				
FILL LINE	B	3162	2"	DROP PIPE 2" INT PVC	250°	DOME	--	--
		7117		BHF ASMLY 2" SXT H'WARD PVC/EPDM				
LEVEL	C	2785	2"	UBD FTG 2" BHF STYLE PVC/EPDM	311°	DOME		
OUTLET	D	8695	2"	BLTD FLG FTG 2" SCKT PVC/TITAN/EPDM	70°	1'-0"	--	--
		2064		SIPHON LEG 2" FLG PVC				
		9753		TRNS FTG 2" BELLOW STYLE II PVC/EPDM/TITAN W/EXP JNT PTFE	--	--	70°	1'-0"
OVERFLOW	E	7117	2"	BHF ASMLY 2" SXT H'WARD PVC/EPDM	240°	5'-10 1/2"	--	--
VENT	F	2865	4"	UBD FTG 4" FLG STYLE PVC/TITAN/EPDM	CTR	DOME	--	--
LEVEL GAUGE	G	4089	--	LEVEL GAGE SML FLT TYPE PVC	230°	DOME	--	--
		7117		BHF ASMLY 2" SXT H'WARD PVC/EPDM				
		3204		(2) SUPPORT VERT EXT PIPE TITANIUM				
		3209		(2) GSKT 1/2" STUD BOLT 1/4" EPDM				
		10346		PIPE SUPPORT 4" INTERNAL PVC/PE				
LEAK MONITORING	H	7107	1"	BHF ASMLY 1" SXT H'WARD PVC/EPDM	--	--	30°	4"
INDOOR CLIPS ONLY	R	11520		RC A6-6 SS 316 6" X 4" X 3/8" X 6" HR ANGLE	--	--	0°	SDWL
		10620		(2) ANCHOR ROD 5/8" X 7 5/8" 316SS			90°	180°
							270°	

**NOTES:**

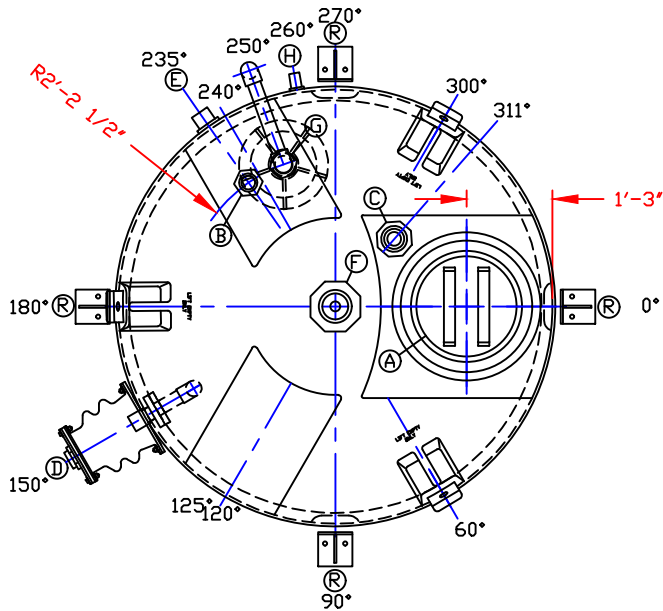
1. THIS IS A COMPUTER GENERATED DWG. DO NOT REVISE BY HAND.
2. DIMENSIONS WILL VARY ±3% DUE TO VARIATIONS IN MULTIPLE MOLDS & CONDITIONS PREVALENT DURING MANUFACTURE & USAGE.
3. TANKS DESIGNED FOR 1.9 SpG MAT'L @ 100°F/ATMOS PRESSURE

**NOTE:**  
MUST USE FLEXIBLE CONNECTIONS ALL LOWER SIDEWALL FITTINGS

CALCULATED CAPACITIES/ VOLUME IN U.S. GALLONS			
TANK	DESIGN CAP	DOME VOL	TOTAL VOL
INNER	1016	187	1203
OUTER	1215	N/A	1215

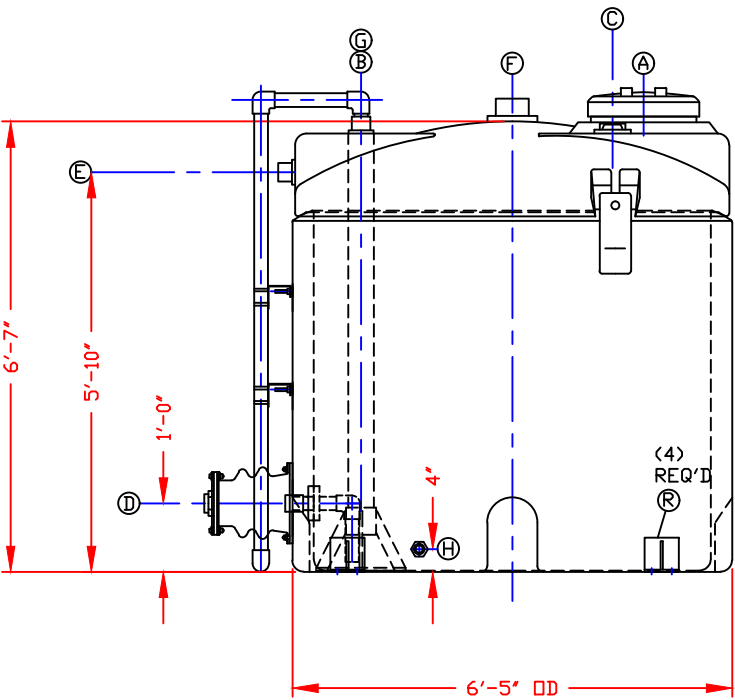
DWG TITLE		1015 GALLON SAFE-TANK ASSEMBLY #3	
		1.9 SpG/XLPE/NATURAL STOCK NO. 12001015410 1.9 SpG/XLPE/NATURAL STOCK NO. 12101200410	
SERVICE: ALUMINUM CHLOROHYDRATE			
SCALE:	1/2"=1'-0"	 Western Region P.O. Box 80 3053 South Ash Street French Camp, CA 95231 (209) 962-4964 FAX (209) 962-4455	DR: C. ROBERSON
DATE:	11/25/20		SHEET
WHITNEY EQUIPMENT CO PD #44086 FOR: VINE ST. WTP CITY OF ALBANY		1 OF 1	WEC44086C B





NOZZLE SCHEDULE & ACCESSORIES

SERVICE	MK	STOCK NO	SIZE	FITTING	INNER TANK		OUTER TANK	
					DEG	ELEV	DEG	ELEV
CAP	A	4558	17"	CAP 17" BUTTRESS THREAD BLK PE	0°	DOME	--	--
		6767		GSKT 17" THREAD CAP 1/2" PE				
FILL LINE	B	3162	2"	DROP PIPE 2" INT PVC	235°	DOME	--	--
		7117	2"	BHF ASMLY 2" SXT H'WARD PVC/EPDM				
LEVEL	C	2785	2"	UBD FTG 2" BHF STYLE PVC/EPDM	311°	DOME		
OUTLET	D	9740	2"	B.O.S.S. FITTING 2" ASMLY PE/PVC/TITAN/EPDM	150°	1'-0"	--	--
		3127		SIPHON LEG 2" FN BHF PVC				
		9753		TRNS FTG 2" BELLOW STYLE II PVC/EPDM/TITAN W/EXP JNT PTFE	--	--	150°	1'-0"
OVERFLOW	E	7117	2"	BHF ASMLY 2" SXT H'WARD PVC/EPDM	235°	5'-10"	--	--
VENT	F	7127	4"	BHF ASMLY 4" SXT H'WARD PVC/EPDM	CTR	DOME	--	--
LEVEL GAUGE	G	4089	--	LEVEL GAGE SML FLT TYPE PVC	250°	DOME	--	--
		7117	2"	BHF ASMLY 2" SXT H'WARD PVC/EPDM				
		3204		(2) SUPPORT VERT EXT PIPE TITANIUM				
		3209		(2) GSKT 1/2" STUD BOLT 1/4" EPDM				
		10346		PIPE SUPPORT 4" INTERNAL PVC/PE				
				GAL. TAPE				
LEAK MONITORING	H	7107	1"	BHF ASMLY 1" SXT H'WARD PVC/EPDM	--	--	260°	4"
INDOOR CLIPS ONLY	R	11520		RC A6-6 SS 316 6" X 4" X 3/8" X 6" HR ANGLE	--	--	0°	SDWL
		10620		(2) ANCHOR ROD 5/8" X 7 5/8" 316SS			90°	
							180°	
							270°	




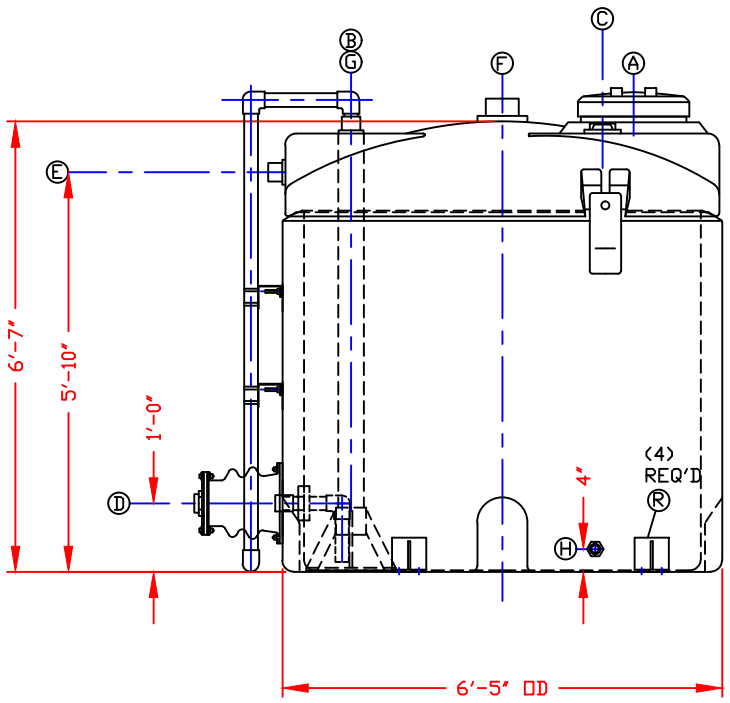
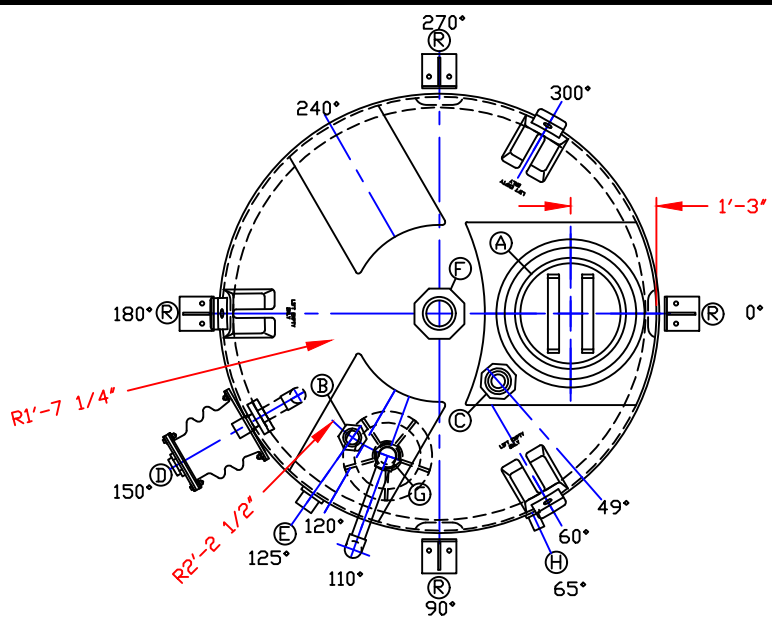
NOTES:

1. THIS IS A COMPUTER GENERATED DWG. DO NOT REVISE BY HAND.
2. DIMENSIONS WILL VARY ±3% DUE TO VARIATIONS IN MULTIPLE MOLDS & CONDITIONS PREVALENT DURING MANUFACTURE & USAGE.
3. TANKS DESIGNED FOR 1.9 SpG MAT'L @ 100°F/ATMOS PRESSURE

NOTE:  
MUST USE FLEXIBLE CONNECTIONS ALL LOWER SIDEWALL FITTINGS

CALCULATED CAPACITIES/ VOLUME IN U.S. GALLONS			
TANK	DESIGN CAP	DOME VOL	TOTAL VOL
INNER	1016	187	1203
OUTER	1215	N/A	1215

DWG TITLE		1015 GALLON SAFE-TANK ASSEMBLY #2	
		1.9 SpG/XLPE/NATURAL/w DR1000	
		STOCK NO. 12001015440	
		1.9 SpG/XLPE/NATURAL	
		STOCK NO. 12101200410	
SERVICE: SODIUM HYPOCHLORITE			
SCALE:	1/2"=1'-0"	 Western Region P.O. Box 80 3053 South Ash Street French Camp, CA 95231 (209) 962-4964 FAX (209) 962-4455	DR: C. ROBERSON
DATE:	11/25/20		SHEET
WHITNEY EQUIPMENT CO PD #44086		1 OF 1	WEC44086B A
FOR: VINE ST. WTP CITY OF ALBANY			




NOZZLE SCHEDULE & ACCESSORIES						INNER TANK		OUTER TANK	
SERVICE	MK	STOCK NO	SIZE	FITTING	DEG	ELEV	DEG	ELEV	
CAP	A	4558	17"	CAP 17" BUTTRESS THREAD BLK PE	0°	DOME	--	--	
		6767		GSKT 17" THREAD CAP 1/2" PE					
FILL LINE	B	3162	2"	DROP PIPE 2" INT PVC	125°	DOME	--	--	
		7117	2"	BHF ASMLY 2" SXT H'WARD PVC/EPDM					
LEVEL	C	2785	2"	UBD FTG 2" BHF STYLE PVC/EPDM	60°	DOME			
OUTLET	D	9740	2"	B.O.S.S. FITTING 2" ASMLY PE/PVC/TITAN/EPDM	150°	1'-0"	--	--	
		3127		SIPHON LEG 2" FN BHF PVC					
		9753		TRNS FTG 2" BELLOW STYLE II PVC/EPDM/TITAN W/EXP JNT PTFE	--	--	150°	1'-0"	
OVERFLOW	E	7117	2"	BHF ASMLY 2" SXT H'WARD PVC/EPDM	125°	5'-10"	--	--	
VENT	F	7127	4"	BHF ASMLY 4" SXT H'WARD PVC/EPDM	CTR	DOME	--	--	
LEVEL GAUGE	G	4089	--	LEVEL GAGE SML FLT TYPE PVC	110°	DOME	--	--	
		7117	2"	BHF ASMLY 2" SXT H'WARD PVC/EPDM					
		3204		(2) SUPPORT VERT EXT PIPE TITANIUM					
		3209		(2) GSKT 1/2" STUD BOLT 1/4" EPDM					
		10346		PIPE SUPPORT 4" INTERNAL PVC/PE					
LEAK MONITORING	H	7107	1"	BHF ASMLY 1" SXT H'WARD PVC/EPDM	--	--	65°	4"	
		11520		RC A6-6 SS 316 6" X 4" X 3/8" X 6" HR ANGLE	--	--	0°	SDWL	
CLIPS ONLY	R						90°		
		10620		(2) ANCHOR ROD 5/8" X 7 5/8" 316SS			180°		
							270°		

**NOTES:**  
 1. THIS IS A COMPUTER GENERATED DWG. DO NOT REVISE BY HAND.  
 2. DIMENSIONS WILL VARY ±3% DUE TO VARIATIONS IN MULTIPLE MOLDS & CONDITIONS PREVALENT DURING MANUFACTURE & USAGE.  
 3. TANKS DESIGNED FOR 1.9 SpG MAT'L @ 100°F/ATMOS PRESSURE

**NOTE:**  
 MUST USE FLEXIBLE CONNECTIONS ALL LOWER SIDEWALL FITTINGS

CALCULATED CAPACITIES/ VOLUME IN U.S. GALLONS			
TANK	DESIGN CAP	DOME VOL	TOTAL VOL
INNER	1016	187	1203
OUTER	1215	N/A	1215

DWG TITLE		1015 GALLON SAFE-TANK ASSEMBLY #1	
		1.9 SpG/XLPE/NATURAL/w DR1000	
		STOCK NO. 12001015440	
		1.9 SpG/XLPE/NATURAL	
		STOCK NO. 12101200410	
SERVICE: SODIUM HYPOCHLORITE			
SCALE:	1/2"=1'-0"	 Western Region P.O. Box 80 8053 South Ash Street French Camp, CA 95231 (209) 962-4964 FAX (209) 962-4455	DR: C. ROBERSON
DATE:	11/25/20		SHEET
WHITNEY EQUIPMENT CO PD #44086		1 OF 1	WEC44086A A
FOR: VINE ST. WTP CITY OF ALBANY			