



Strategic Energy Management

Year One Accomplishments & Results

City of Albany
Jorge Salinas, IT Director
2014 Energy Trust SEM Cohort

October 9, 2014

Our Energy Management Activities

Energy
Accounting &
Benchmarking

Bldg Opportunity
Assessments

Energy Analysis
& Audits

Performance
Tracking &
Reporting

Technical

- Developed an Energy management policy, and gained organizational approval.
- Conducted building specific **opportunity assessments**
 - WWTP, Police, Library, Senior Center, Swim Center & City Hall.
- Created building specific **opportunity registers** and followed through on many of the high priority items
 - Identified some of the actions/projects undertaken or planned
- Established **energy baselines** including monitoring, tracking & reporting (MT&R) models for selected buildings
 - Tracking building performance and taking corrective action
- Reporting dashboards (facility & executive management)

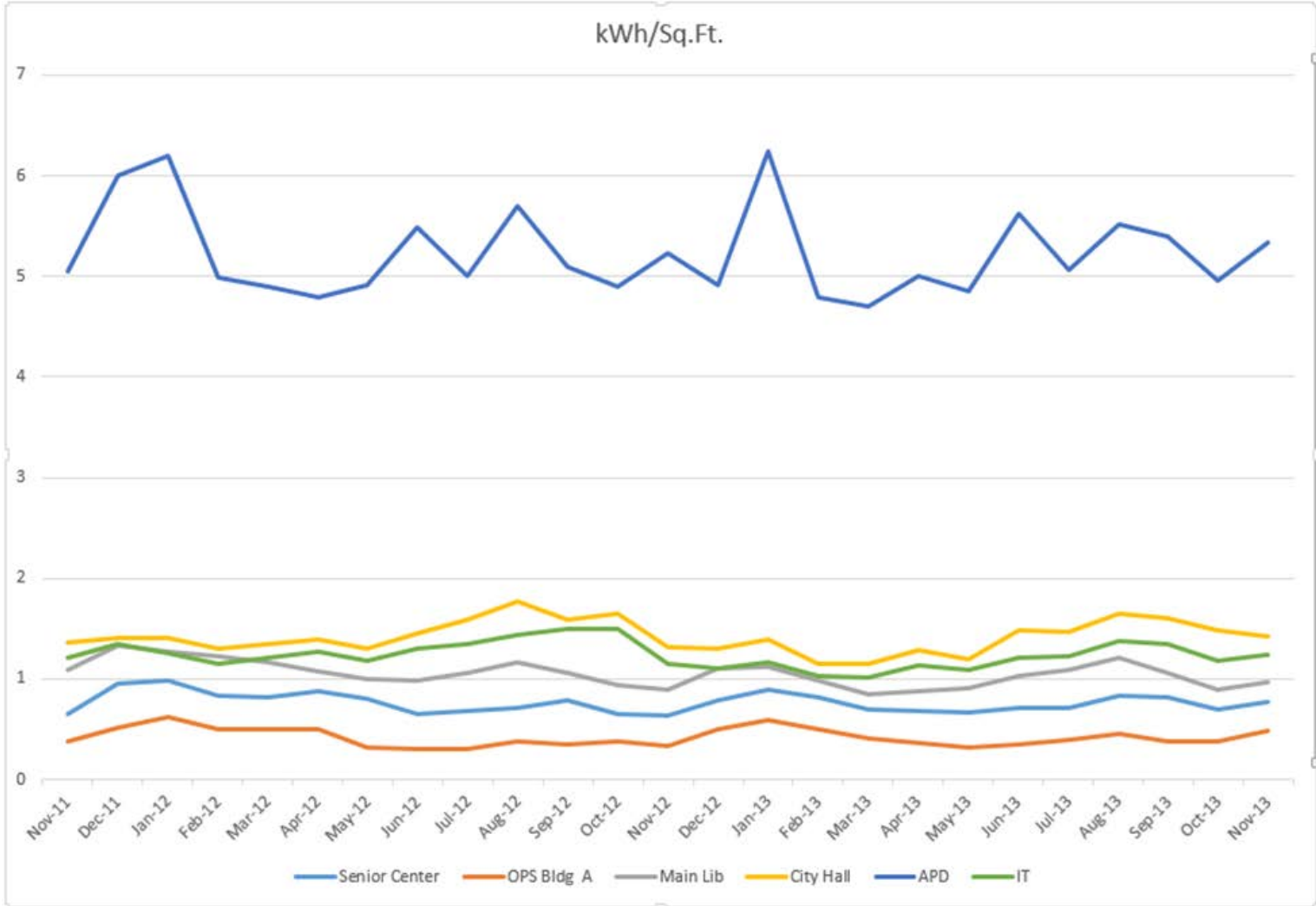
Energy Management Policy

City of Albany

- City of Albany Goal(s):
 - Our initial goal was to reduce our overall electrical and natural gas energy consumption by ***5% every year for the next three-year period***, beginning in July 2014. This will result in a ***\$31K - \$77K on overall electrical and natural gas operating cost savings***.
 - Establish an energy fund for future energy related projects that will enable the City to continue supporting the program.

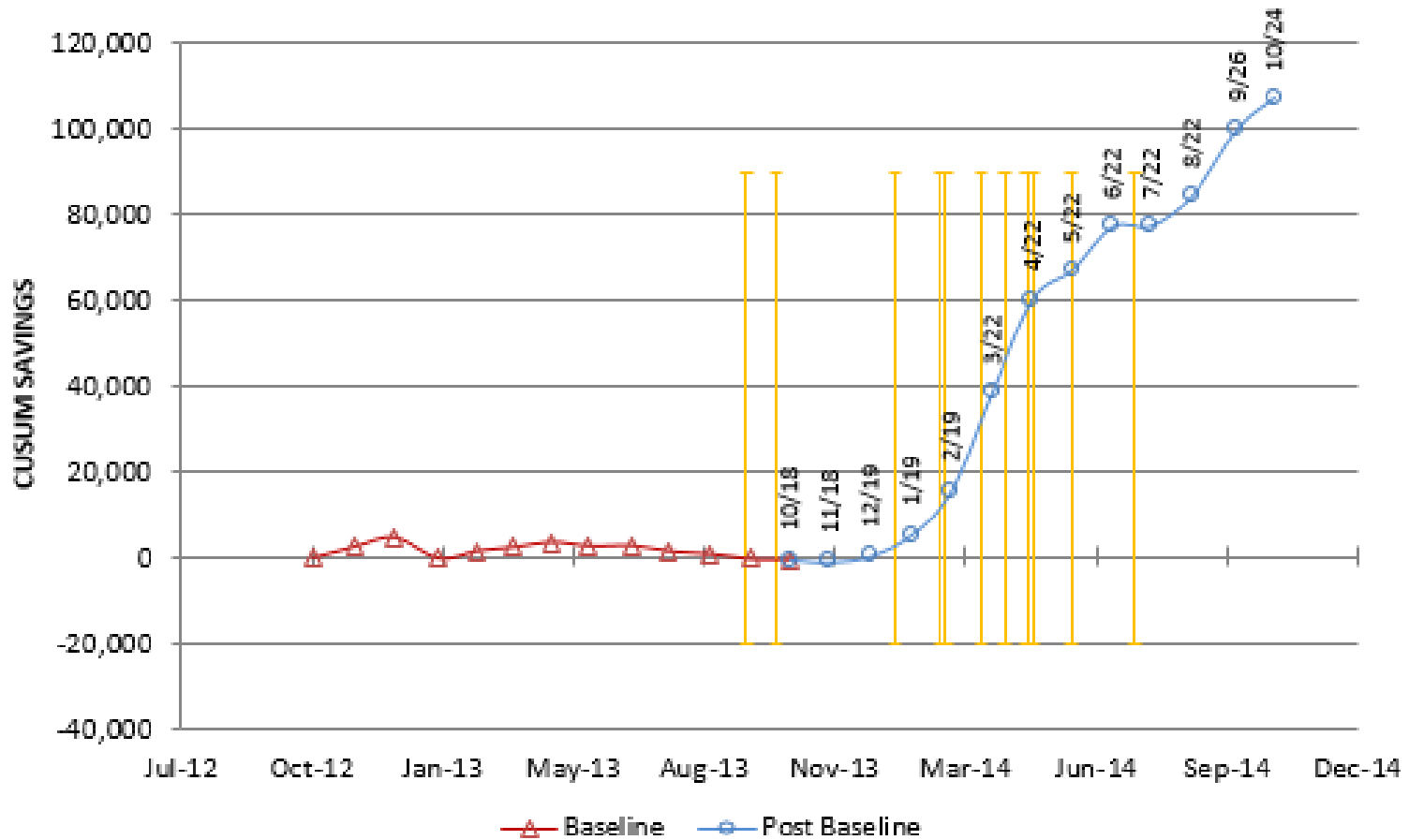


Energy Baseline Example



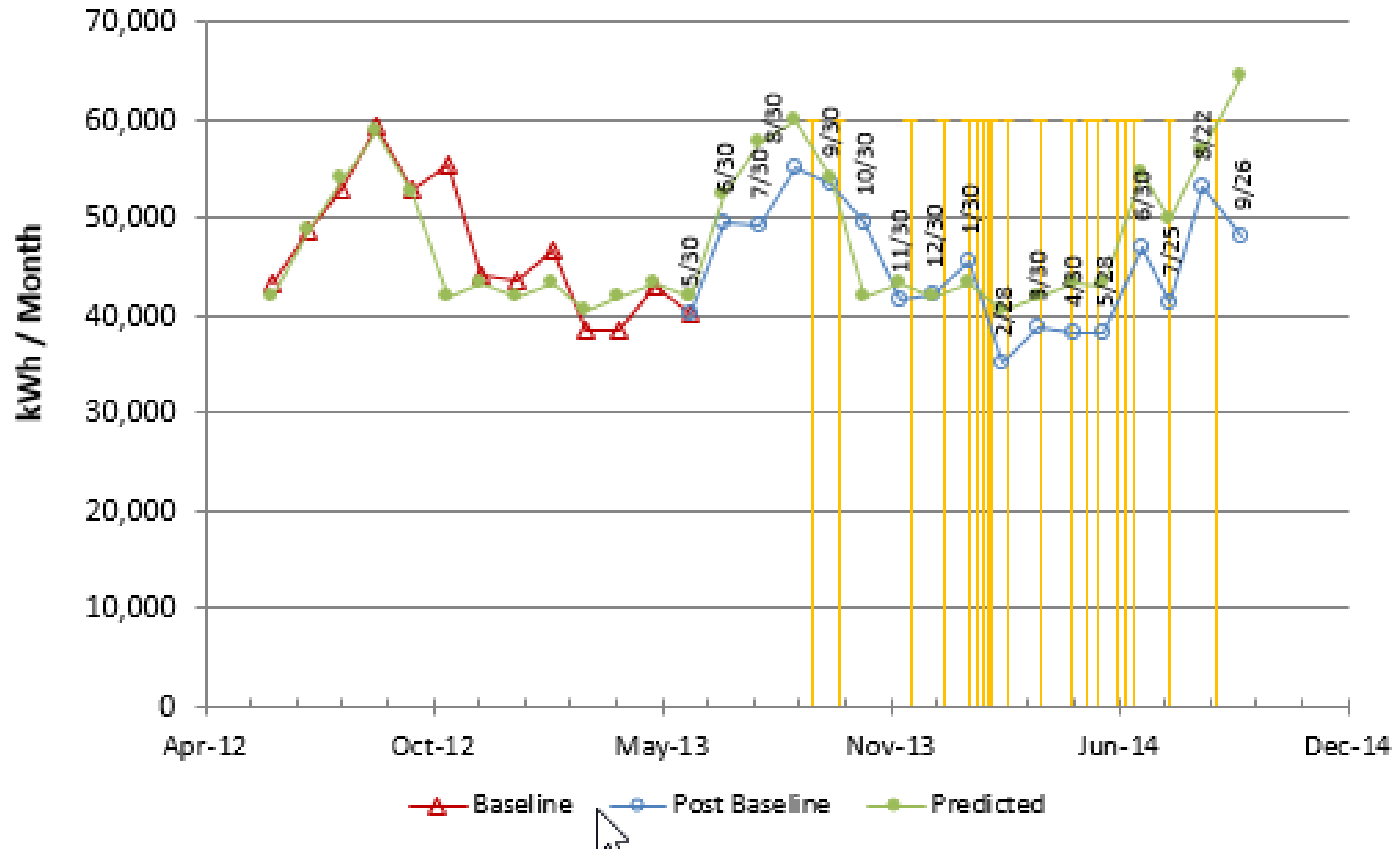
APD

kWh CUSUM SAVINGS



City Hall

Predicted & Actual kWh Time Series



Accomplishments - Our Projected Savings

For 2+4 Buildings

Electricity

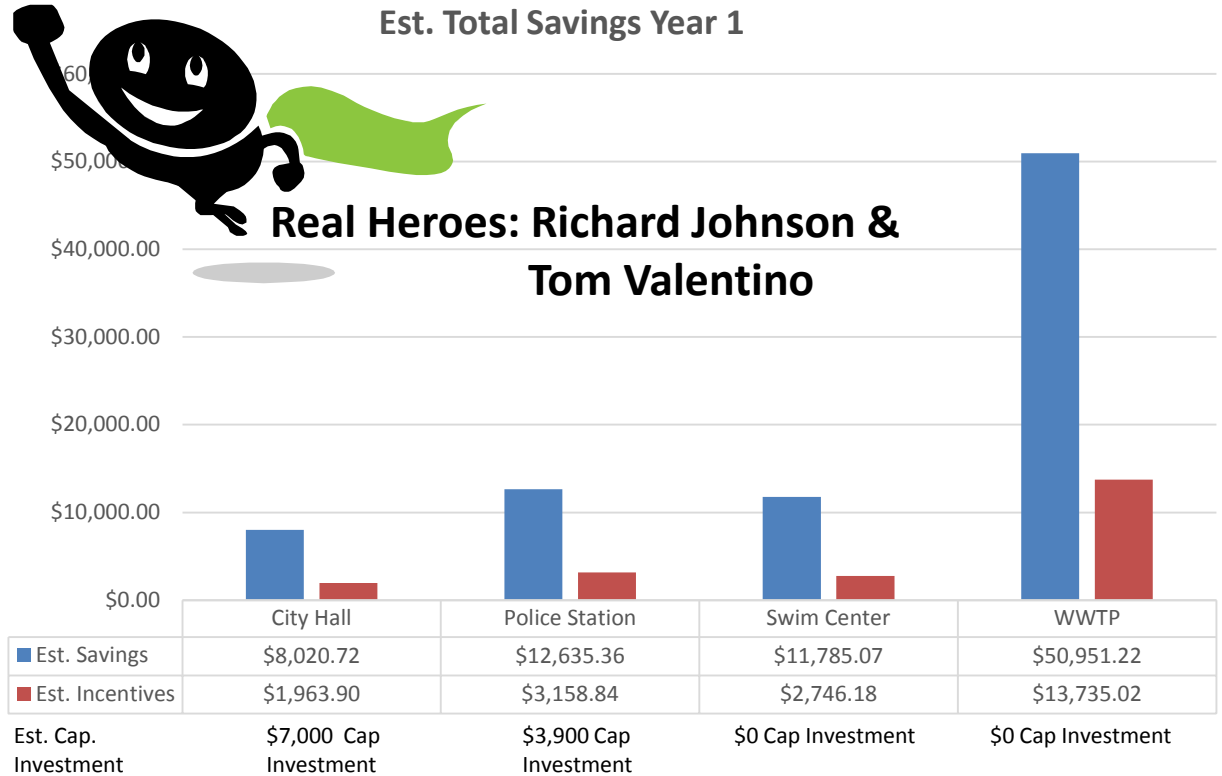
- 822,721 kWh
- 10.71% of usage
- \$61,646 Saved

Natural Gas

- 27,162 Therms
- 47.47% of usage
- \$22,932 Saved

Per Building Savings

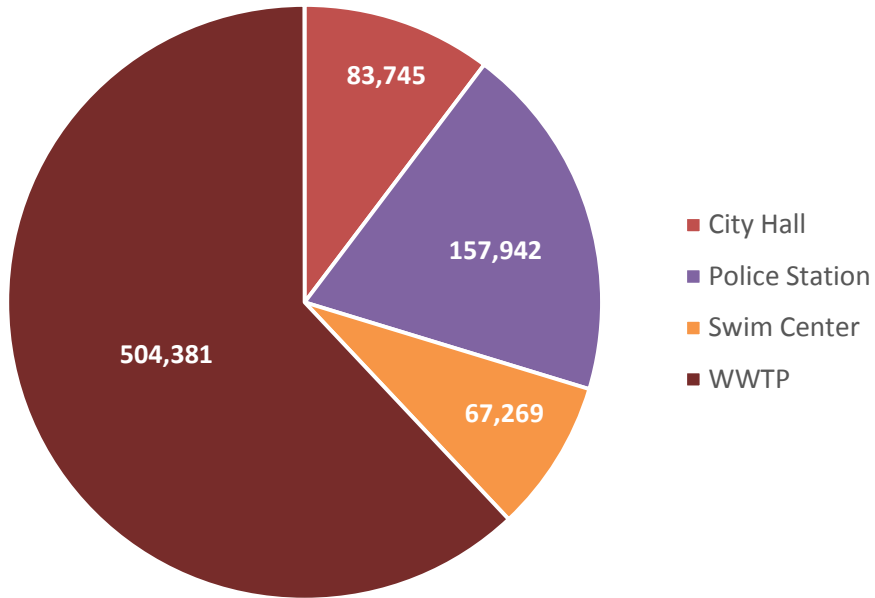
Range from under 0% to over 10% of kwh and 47% Therms



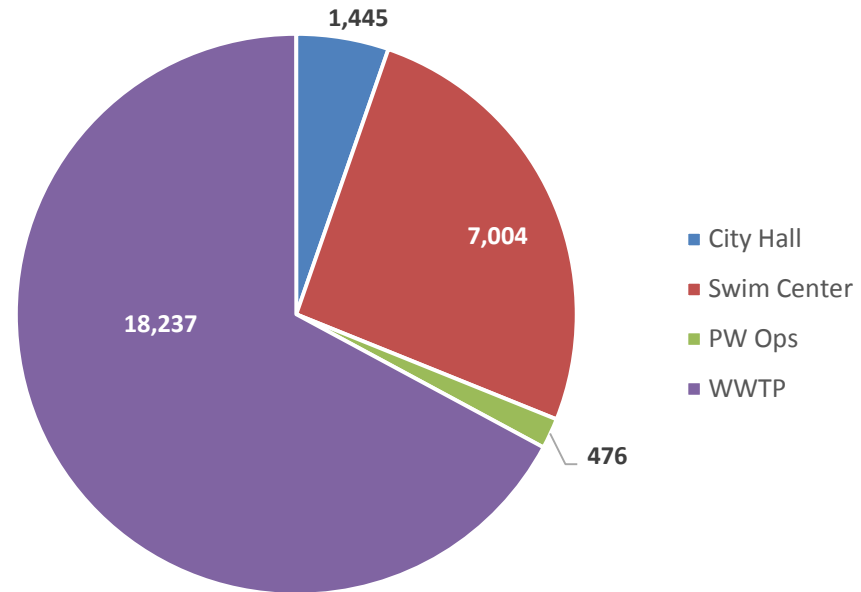
Projected Savings of \$106,465 =
 \$84,578 in energy bill savings
 + \$21,886 in incentive payments

KWh and Therms Saved

KWh Saved



Therms Saved



Questions

